

SUBHAM APARTMENT

Subham is a luxurious apartment. These flats are located in a prime residential area surrounded by first-class amenities. There are 20 flats altogether in this apartment, 14 of which have already been sold, leaving just 6 flats with a configuration of 2 and 3 BHK that are still available for purchase. Here you can find well planned, structures that have a unit size of 755 - 1510 Sq.Ft. Developed in a site area of 2.6 Grounds this is an amazing property that houses several amenities to give you a pleasant lifestyle

Features

- Covered / open parking for all flats
- CCTV with security cameras
- Solar power for common areas
- Generator power backup
- Video door phone for each flats
- Spacious lobby
- Lift and wide Stairway
- Servants/ drivers toilet
- Durable & designer pavers for building all-around
- Rain water harvesting
- Solar roof cool tiles
- Lightning arrester
- Durable & designer tiles for parking
- Stringent adherence to CMDA approval
- Metro water / Bore water inside the flats
- Enhanced ventilation for all flats



STRUCTURE

- RCC Framed Structure with seismic design

WALL

- Aerated blocks (AAC Blocks) in cement mortar

FLOORING

- Double Charged Marbonite Flooring
- Anti-skid ceramic tile flooring in balconies and bathrooms

CARPENTRY

- Main door – Teak wood frame and teak wood door shutter with melamine polish
- Bedroom door - Teak wood frame and flush door shutter
- Bath room door – WPC frame and WPC door shutter
- Window – UPVC frame with glass shutter

WALL FINISHES

- External and Internal walls with cement plastering
- Exterior grade weather shield emulsion paint for outer walls
- Putty finish and quality emulsion paint for interior walls
- Enamel paint for MS grills and shutters

LOCKS

- Main door - Godrej locks
- Bed room door - Godrej locks

KITCHEN

- Jet black polished granite top
- Ceramic wall tile 2'6" from granite top
- Stainless steel sink and Provision for aqua guard point
- Metro and bore water inside the kitchen

TOILET

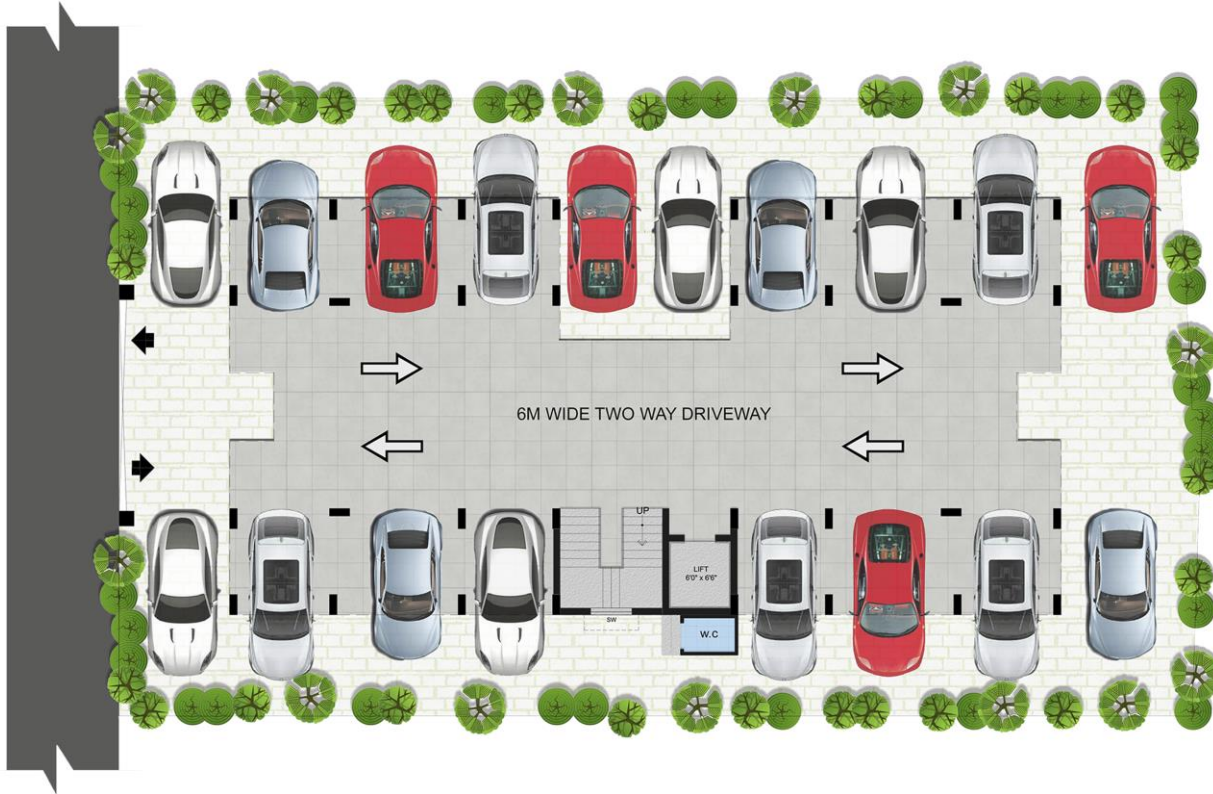
- Western closet, wash basin, concealed diverter – Make : Jaguar
- Provision for Geyser point
- Wall tile up to roof level

ELECTRICAL

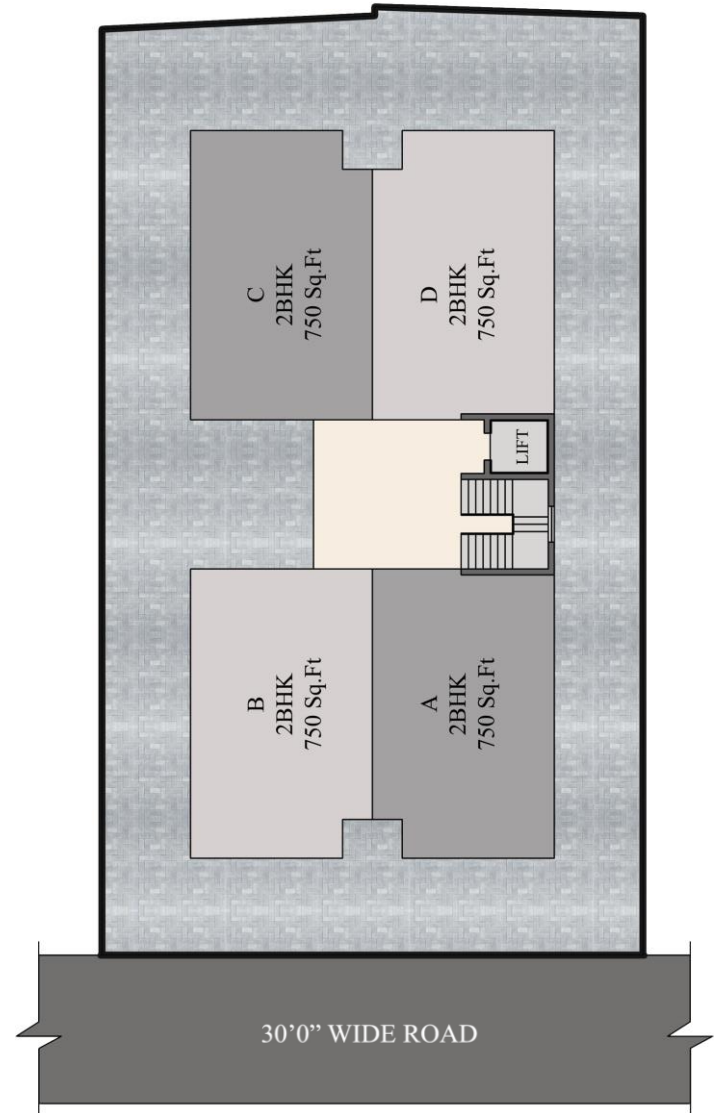
- 3 phase power supply with concealed FRLS copper wiring
- Automotive change over switch with circuit breakers
- Modular switches, AC Points for living and all bedrooms

PLUMBING

- Concealed water supply with CPVC flow guard materials
- Water supply main line in UPVC



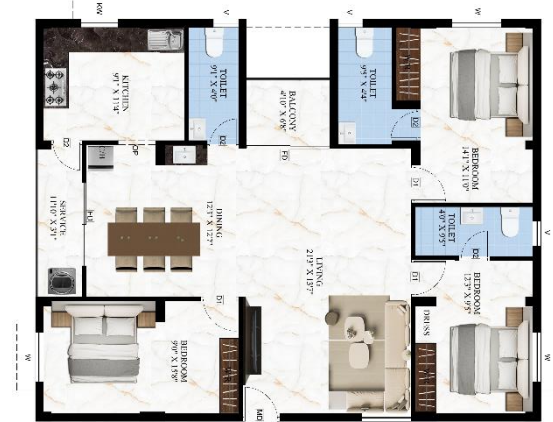
SITE / STILT FLOOR PLAN



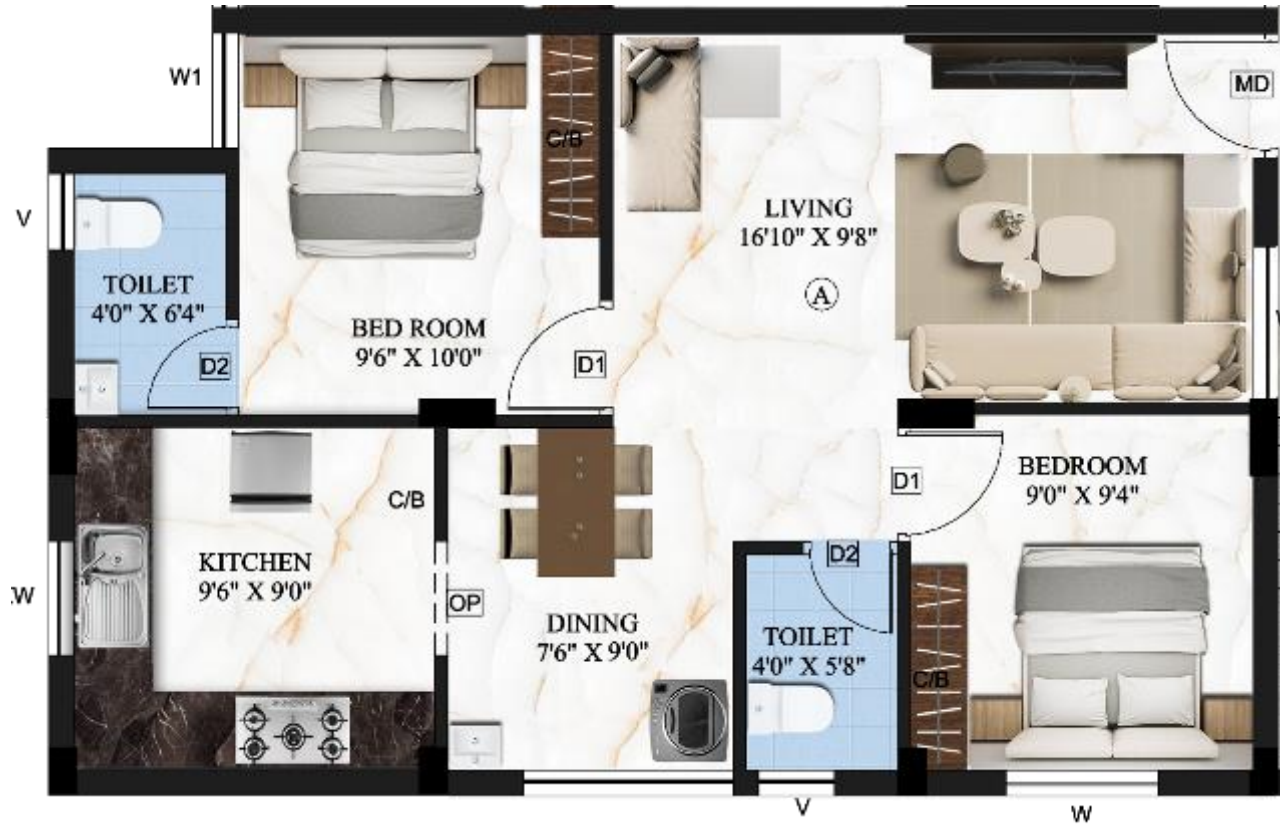
UNIT CONFIGURATION



3 – BHK – 1510 SQ.FT



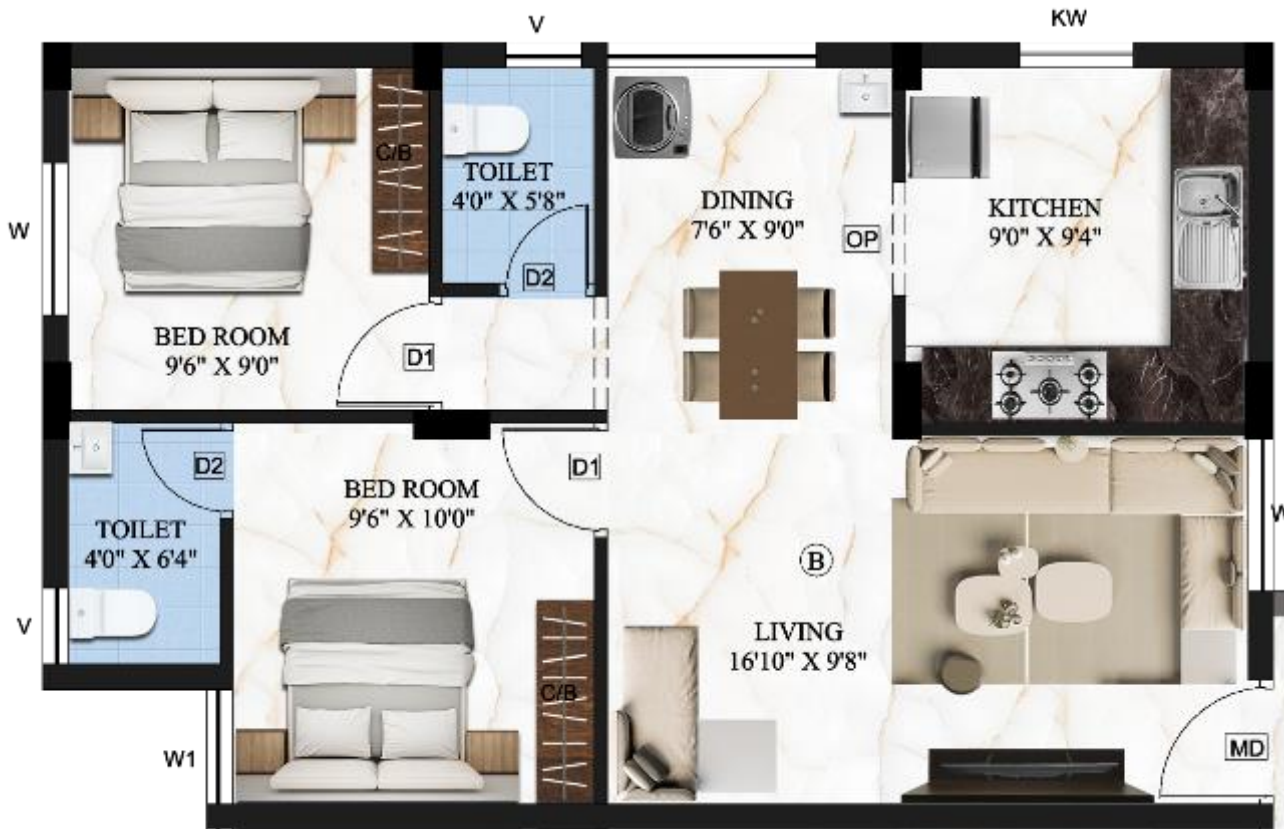
KEY PLAN



2 – BHK – 755 SQ.FT



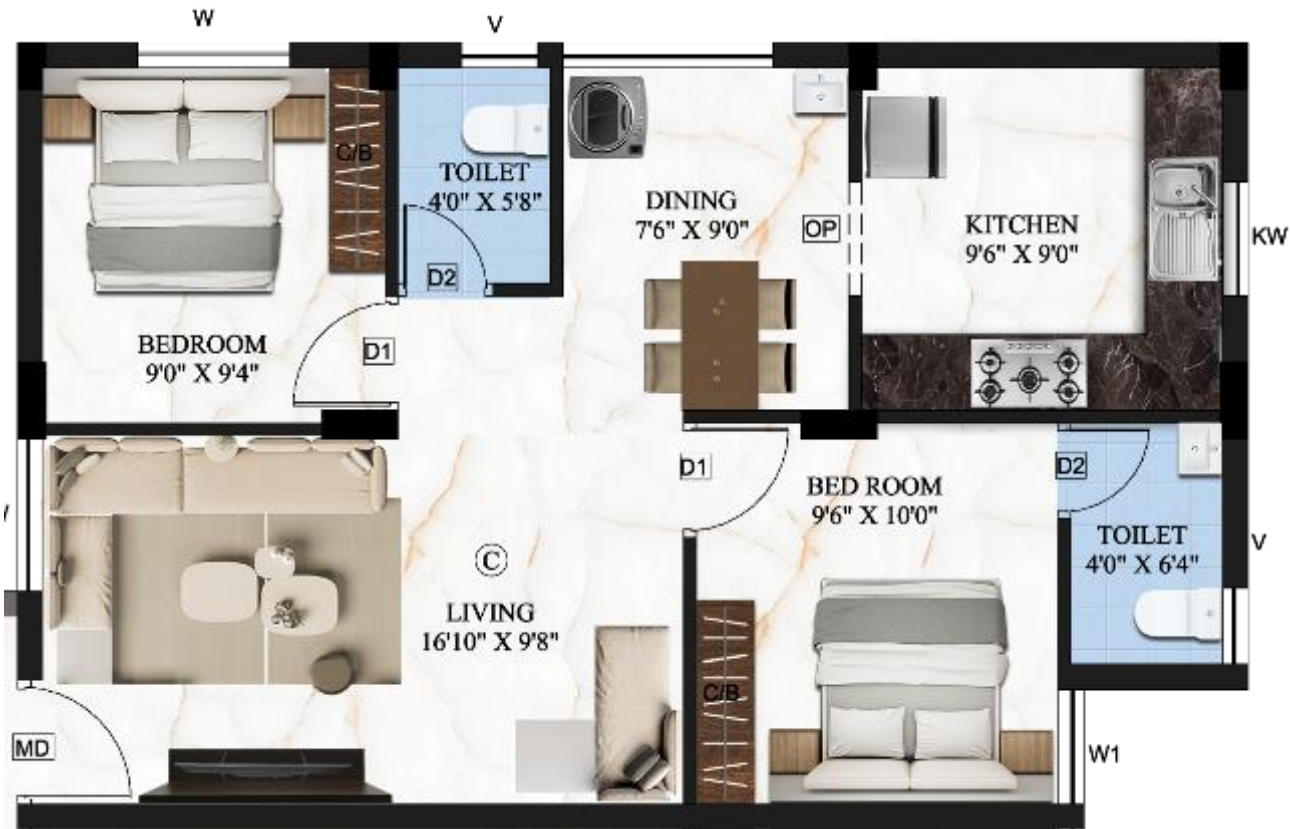
KEY PLAN



2 – BHK – 755 SQ.FT



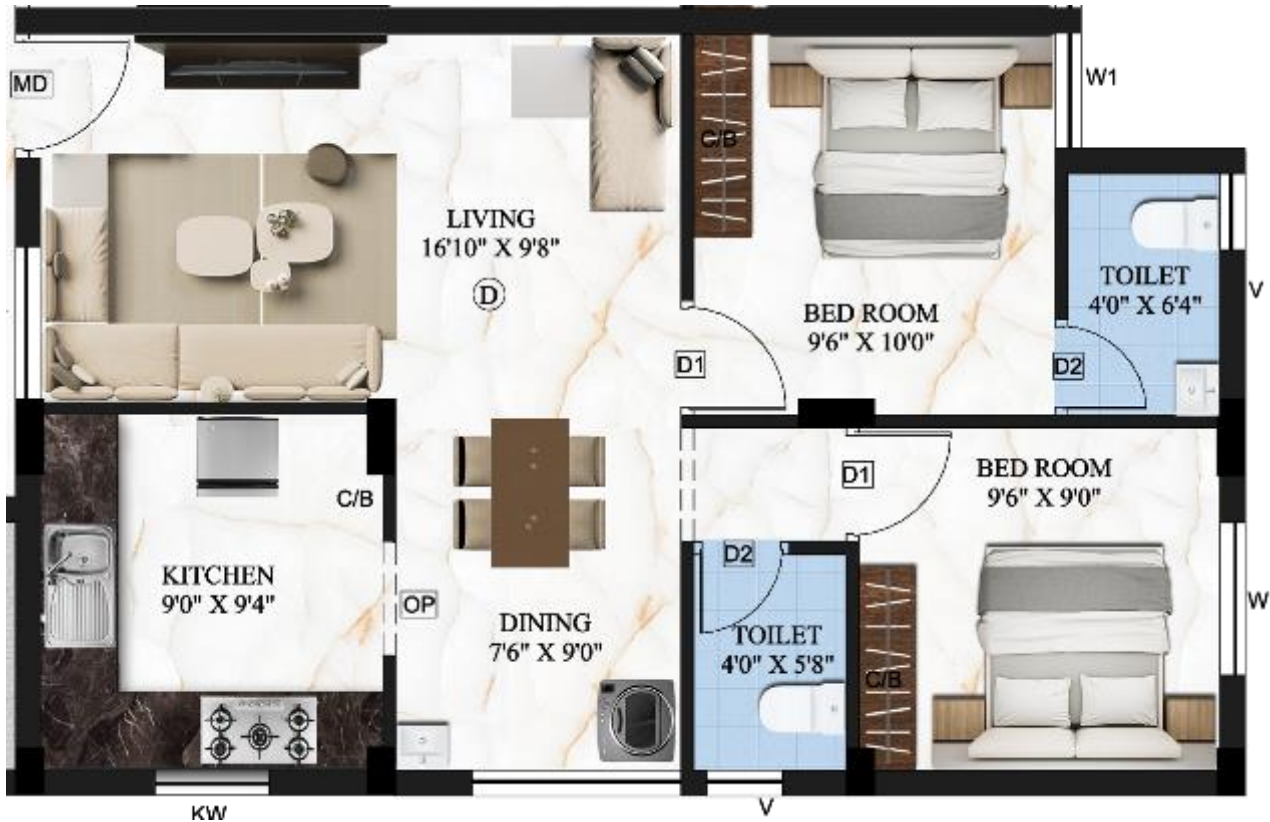
KEY PLAN



2 – BHK – 755 SQ.FT



KEY PLAN



2 – BHK – 755 SQ.FT



KEY PLAN