



Tilottama  
Natural City

7, Old Jessore Road  
Ganganagar, Kolkata - 700132





*Tilottama*  
Natural City

7, Old Jessore Road  
Ganganagar, Kolkata - 700132



*Tilottama*  
Natural City

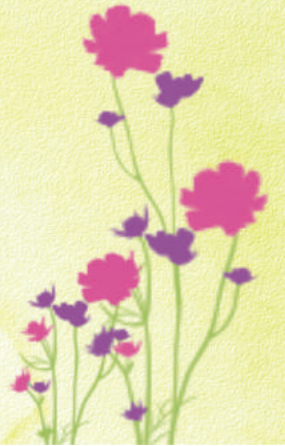
7, Old Jessore Road  
Ganganagar, Kolkata - 700132





*Tilottama*  
Natural City

7, Old Jessore Road  
Ganganagar, Kolkata - 700132





*Tilottama*  
Natural City

7, Old Jessore Road  
Ganganagar, Kolkata - 700132



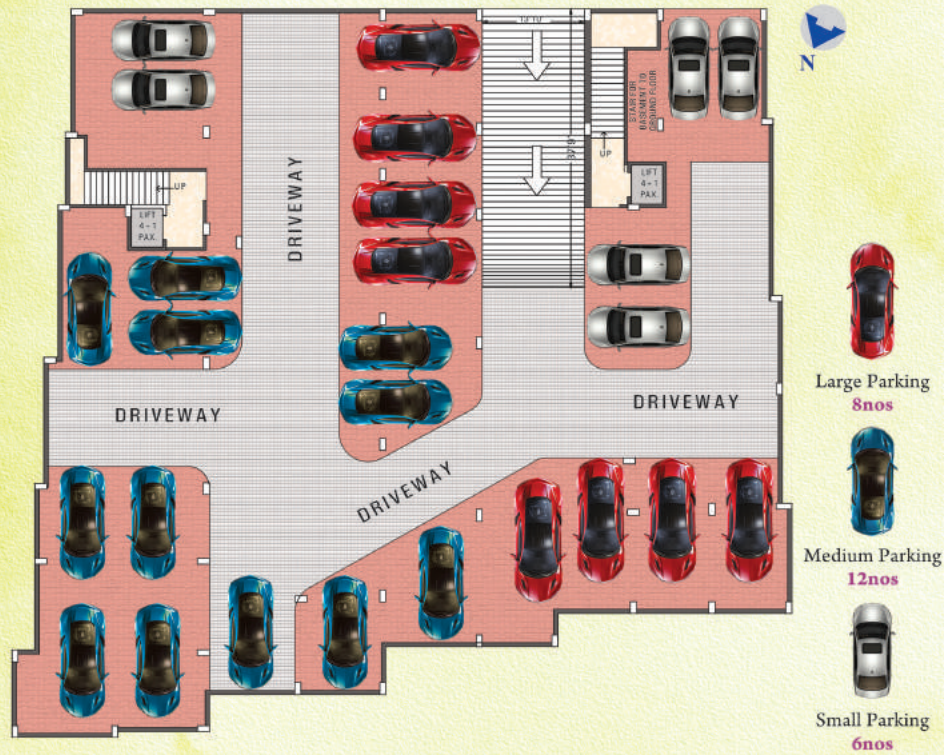


- 10min. walking distance from Doltala More
- 7 min. walking distance from B.T. College More
- Near by Airport Zone
- Approx 2km. distance from New Barrackpur & Madhyamgram Station
- 5 min. walking distance from Julian Day School
- 1min. walking distance form Ganganagar Hat & Market
- 7 min. walking distance from Up coming metro Station

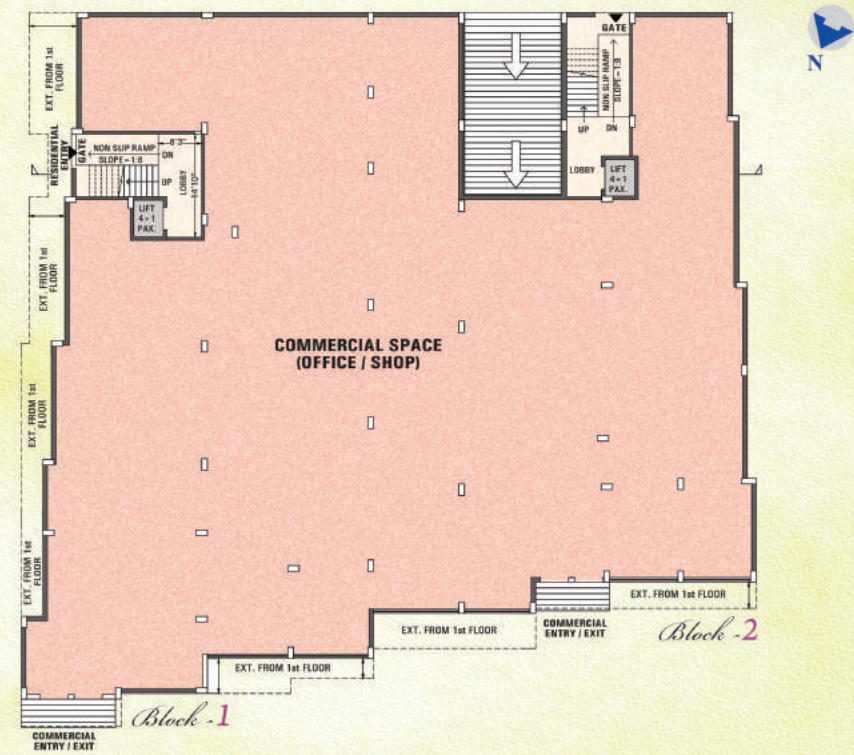
Master Floor Plan



Block -1 & 2 Basement Plan



Block -1 & 2 Ground Floor Plan







# Block - 1 Furniture Layout



Flat-C, 2BHK  
Saleable Area- 915 sft.



Flat-E, 3BHK  
Saleable Area-1313 sft.



Flat-D, 3BHK  
Saleable Area-1225 sft.



Flat-F, 2BHK  
Saleable Area- 924 sft.

## Block -2 Furniture Layout



Flat-A, 2BHK  
Saleable Area- 960 sft.



Flat-C, 3BHK  
Saleable Area- 1331 sft.



Flat-B, 2BHK  
Saleable Area- 904 sft.



Flat-D, 3BHK  
Saleable Area-1269 sft.

## Block -3 Ground Floor Plan



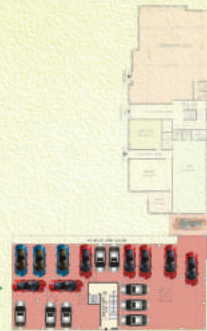
Large Parking  
8nos



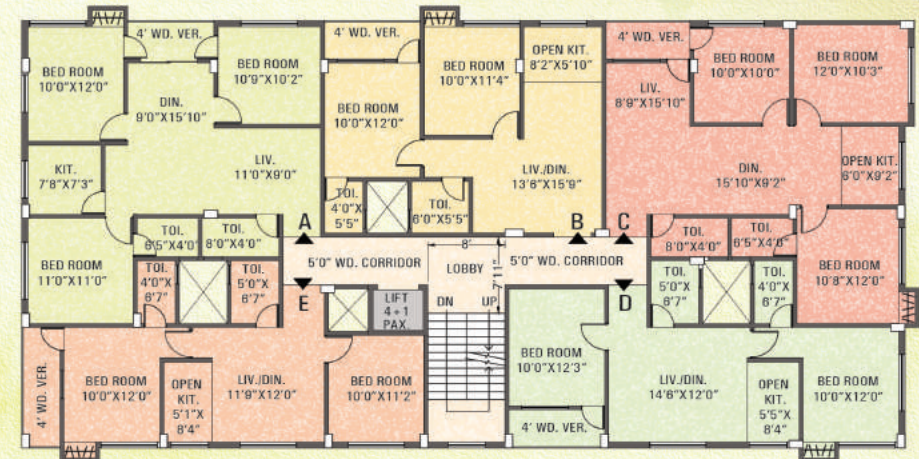
Medium Parking  
3nos



Small Parking  
8nos



## Block -3, 1st & 2nd Floor Plan



### Block-3 Area Statement

Flat-A, 3BHK, Saleable Area- **1185 sft.**

Flat-B, 2BHK, Saleable Area- **889 sft.**

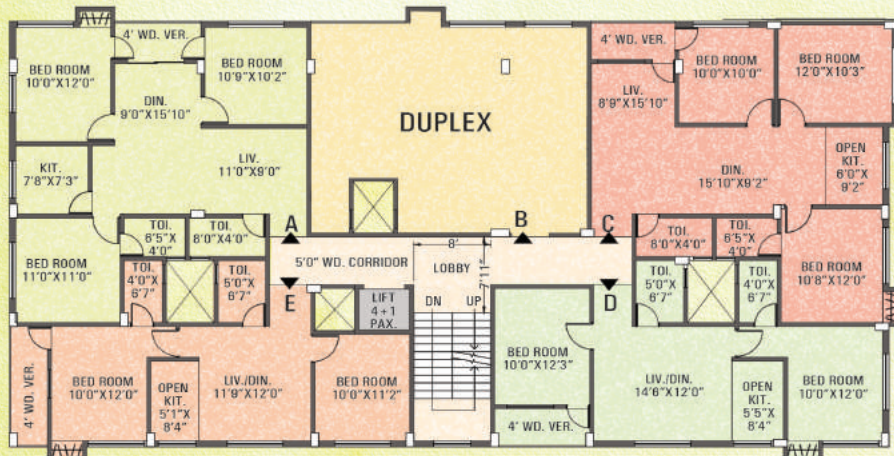
Flat-C, 3BHK, Saleable Area- **1195 sft.**

Flat-D, 2BHK, Saleable Area- **932 sft.**

Flat-E, 2BHK, Saleable Area- **877 sft.**



## Block - 3, 3rd Floor Plan



### Block-3 Area Statement

Flat-A, 3BHK, Saleable Area- **1185 sq.ft.**

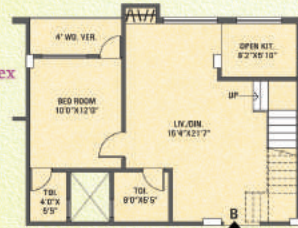
Flat-B, **DUPLEX**

Flat-C, 3BHK, Saleable Area- **1195 sq.ft.**

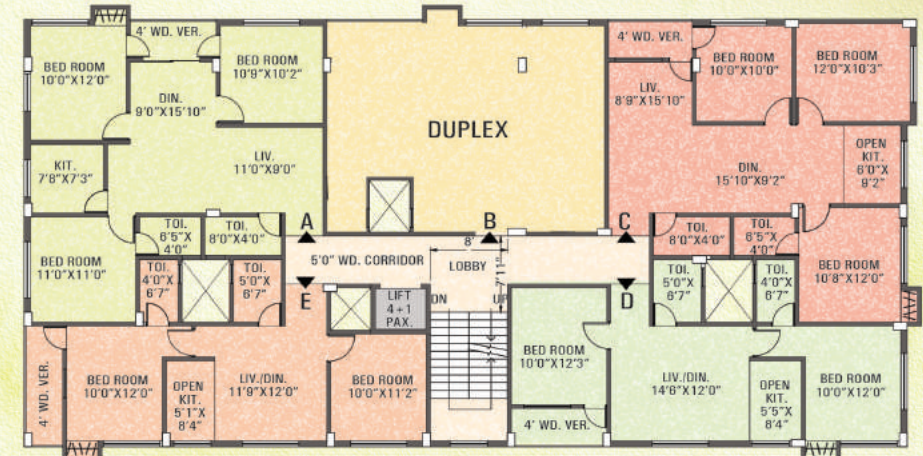
Flat-D, 2BHK, Saleable Area- **932 sq.ft.**

Flat-E, 2BHK, Saleable Area- **877 sq.ft.**

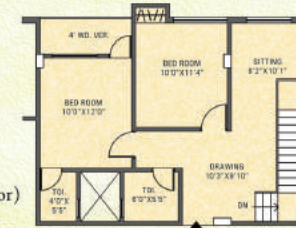
### Block-3 Lower Level Duplex



## Block - 3, 4th Floor Plan



### Block-3 Upper Level Duplex



Flat-B, DUPLEX (3rd & 4th Floor)  
Saleable Area- **1778 sq.ft.**

### Block-3 Area Statement

Flat-A, 3BHK, Saleable Area- **1185 sq.ft.**

Flat-B, **DUPLEX**

Flat-C, 3BHK, Saleable Area- **1195 sq.ft.**

Flat-D, 2BHK, Saleable Area- **932 sq.ft.**

Flat-E, 2BHK, Saleable Area- **877 sq.ft.**

# Block -3 Furniture Layout



**Flat-A, 3BHK**  
Saleable Area- **1185 sft.**



**Flat-B, 2BHK**  
Saleable Area- **889 sft.**



**Flat-C, 3BHK**  
Saleable Area- **1195 sft.**



**Flat-D, 2BHK**  
Saleable Area- **932 sft.**

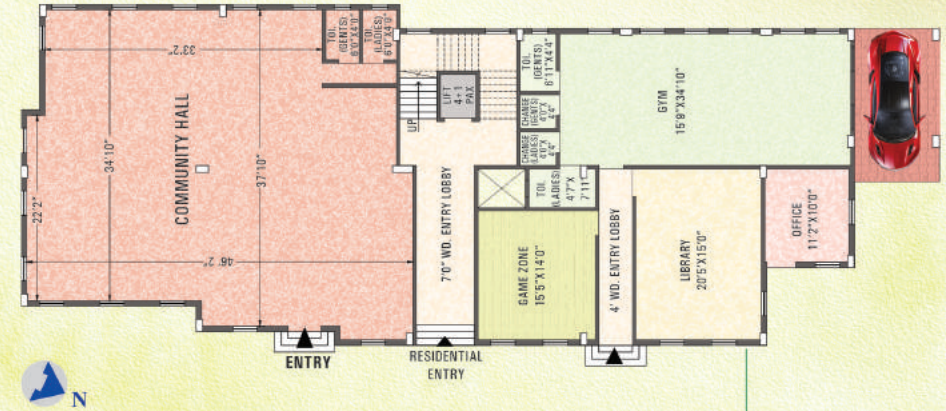
## Block -3 Furniture Layout



**Flat-E, 2BHK**  
Saleable Area- **877 sft.**



## Block -4 Ground Floor Plan



Community Hall Area-**1753 sft.**

Game Room Area-**539 sft.**

Library Area-**339 sft.**

GYM Zone Area-**243 sft.**

Car Parking Area (19 Nos)-**4018 sft.**  
Block-3-18 Nos., Block-4-1 No.



## Block -4, Typical Floor Plan (1st to 4th)



### Block-4 Area Statement

- Flat-A, 3BHK, Saleable Area- **1365 sft.**
- Flat-B, 3BHK, Saleable Area- **1272 sft.**
- Flat-C, 2BHK, Saleable Area- **871 sft.**
- Flat-D, 3BHK, Saleable Area- **1240 sft.**



## Block -4 Furniture Layout



Flat-A, 3BHK  
Saleable Area- **1365 sft.**



Flat-B, 3BHK  
Saleable Area- **1272 sft.**



## Block -4 Furniture Layout

Flat-C, 2BHK  
Saleable Area- 817 sft.



Flat-D, 3BHK  
Saleable Area-1240 sft.

## Specification

### STRUCTURE :

- Safe & Sound-quality controlled R.C.C. frame structure with best material components. earthquake resistant design with Soil test.

### FLOORING :

- Vitrified tiles flooring having greater strength in living, dining and bedrooms.
- Decorative glossy finish dado upto lintel with modern concept tiles in toilet.
- Bathroom :  
Vitrified antiskid tiles flooring

### WALLS :

- Wall putty finish (inside)  
Weather coat finish (outside)

### DOORS :

- Main door- flash door & safety locks.
- Internal door - flash door.
- Bathrooms - PVC door.

### WINDOWS :

- Water resistant & easy to maintain aluminium sliding glass window with grill.

### KITCHEN :

- Vitrified antiskid tiles flooring & black stone top and stainless steel sink; glaze tiles upto window height above gas table.

### ELECTRIFICATION :

- Concealed and fire resistant copper wiring along with modular switches of standard make.
- MCB for total safety & protection for separate unit.

### SANITARY

- Concealed pipeline (inside) with standard fittings plumbing by supreme PVC pipe (outside)





### *Amenities & Facilities*

- 24 hours Water Supply • Community Hall
- Library • Podium • GYM • Game Room
- Decorative Water Body • Surveillance Camera
- Generator Facility • Lift Service • Children Park
- Landscaped Garden • Car Parking
- Sky Walk • Shopping Plaza • Senior Citizen Park

