

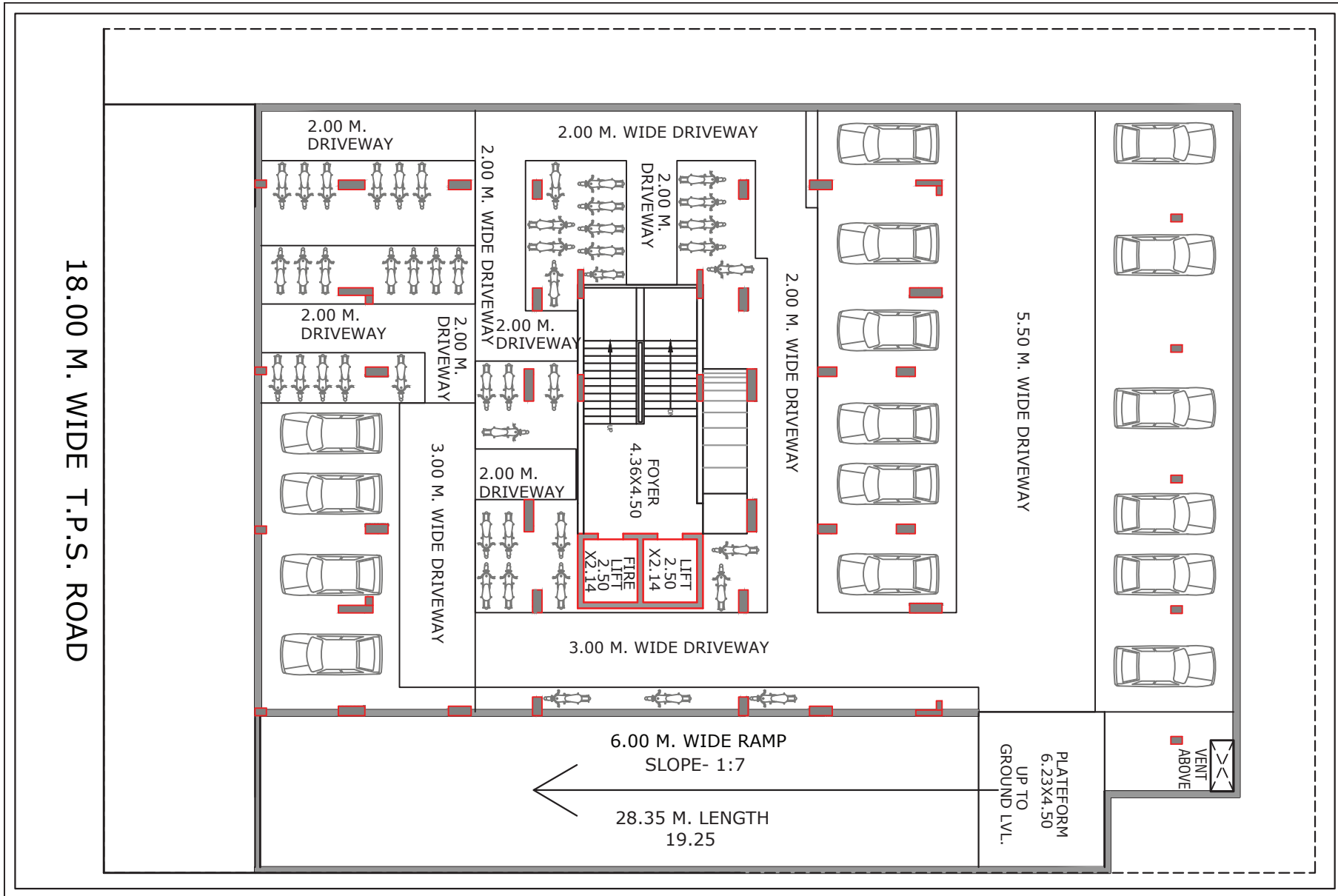


# 3 BHK

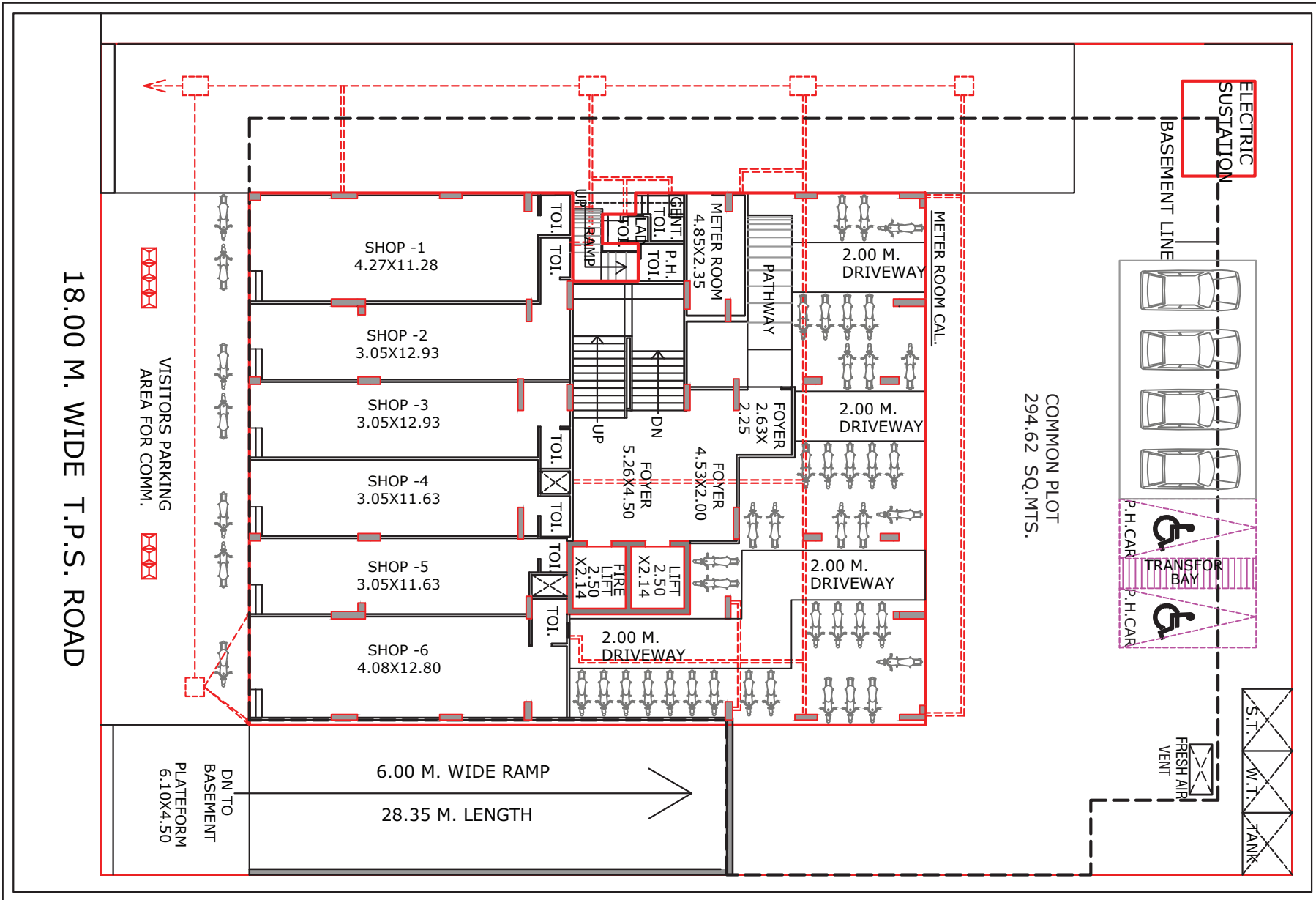
Apartments



BASEMENT FLOOR LAYOUT PLAN

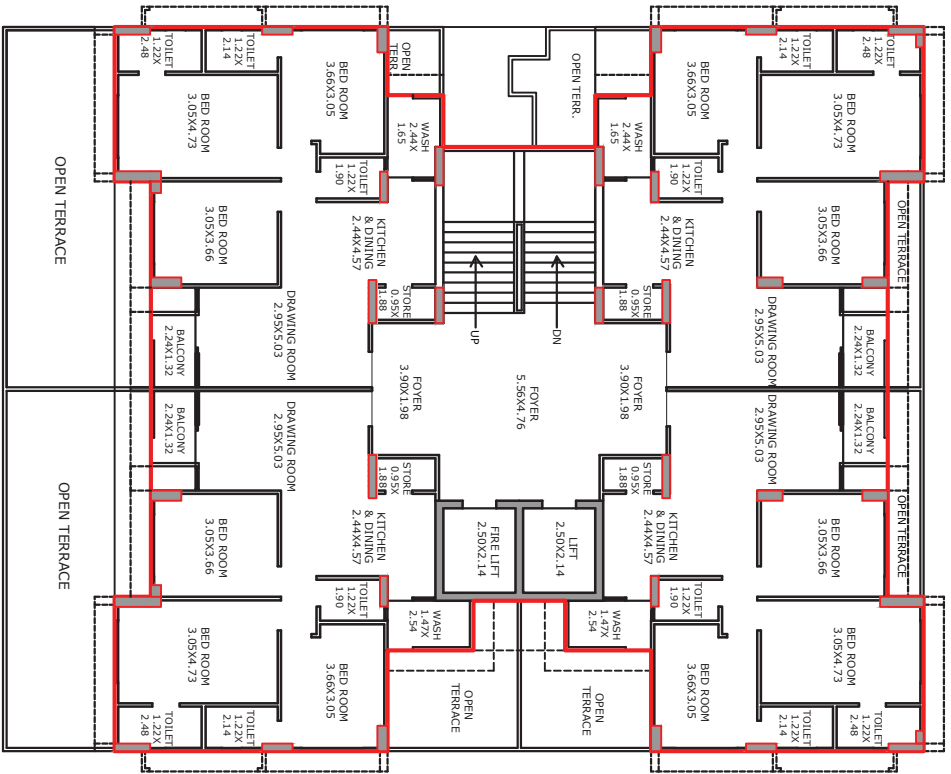


GROUND FLOOR PLAN

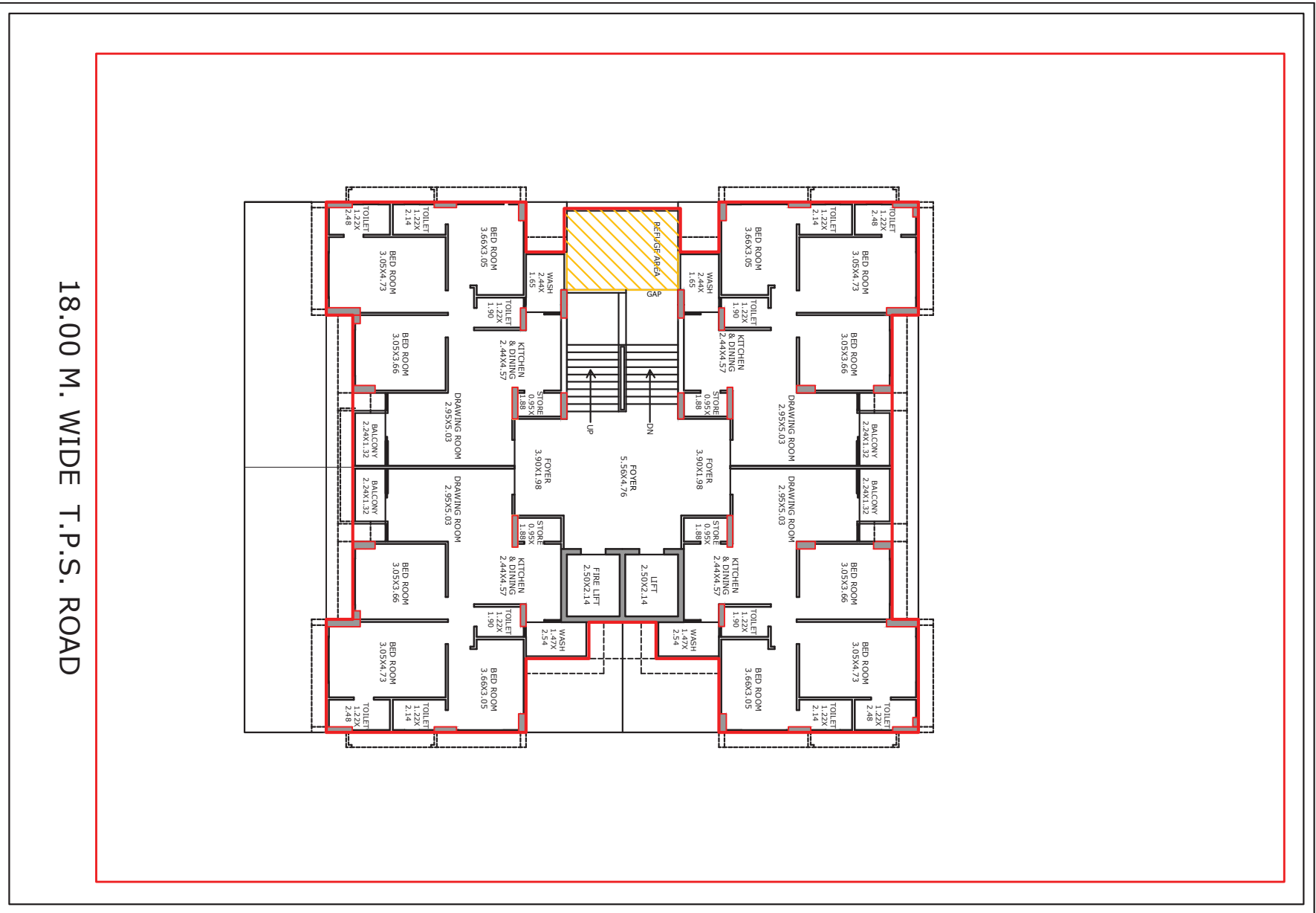


FIRST FLOOR PLAN

18.00 M. WIDE T.P.S. ROAD

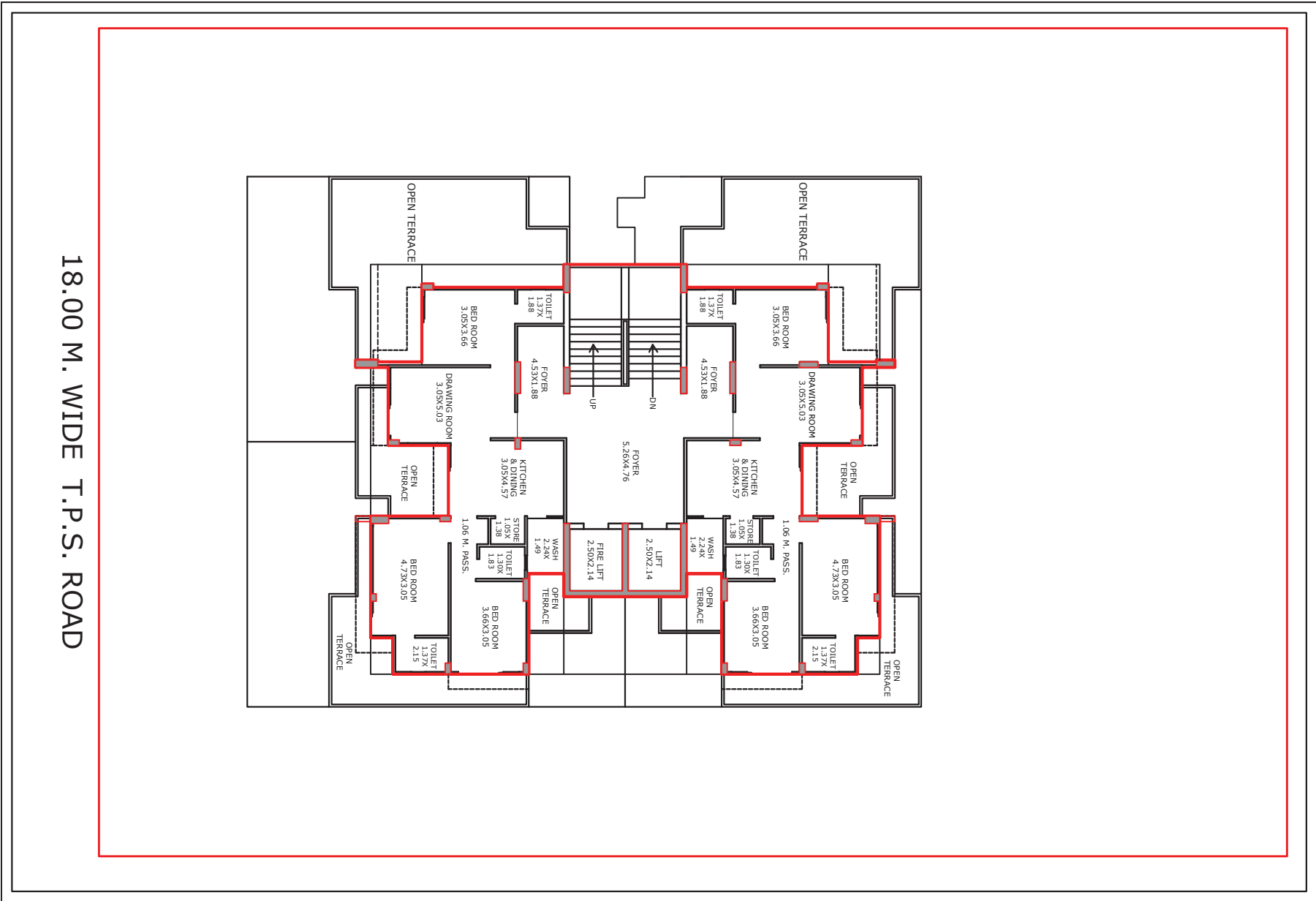


TYPICAL FLOOR PLAN



18.00 M. WIDE T.P.S. ROAD

12TH FLOOR FLOOR PLAN



# SPECIFICATIONS



## Flooring

- Premium vitrified tiles flooring



## Door

- Main Door: Flush door with wooden frame and flush door with wooden granite/ frame
- Internal Door: Flush Door with both side Laminated Sheet with Granite Frame



## Window

- International quality powder coating aluminium with 5 mm glass



## Wash Area

- Floor: Kota or Rustic vitrified tiles
- Dado: Premium ceramic or vitrified tiles



## Paints

- Inside: Putty finish
- Outside: Acrylic paint/Texture



## Kitchen & Store

- Flooring: Vitrified tiles
- Platform: Natural granite
- Dado: Premium ceramic tiles
- Store shelf: DP Kota/Granite shelf



## Security

- Video door phone security system to be linked with reception and access control in the lobby
- Entire campus covered under CCTV surveillance



## Electrification

- 3 phase power connection
- Conceal ISI copper wiring with modular switches
- MCB distribution panel



## Toilets

- Premium ceramic tiles upto lintel level
- Granite/counter basin
- EWC-wall hung type-Jaquar, Kohler/equivalent
- CP Brass fitting - Jaquar, Kohler/equivalent



## Balcony

- Rustic tiles/Granite

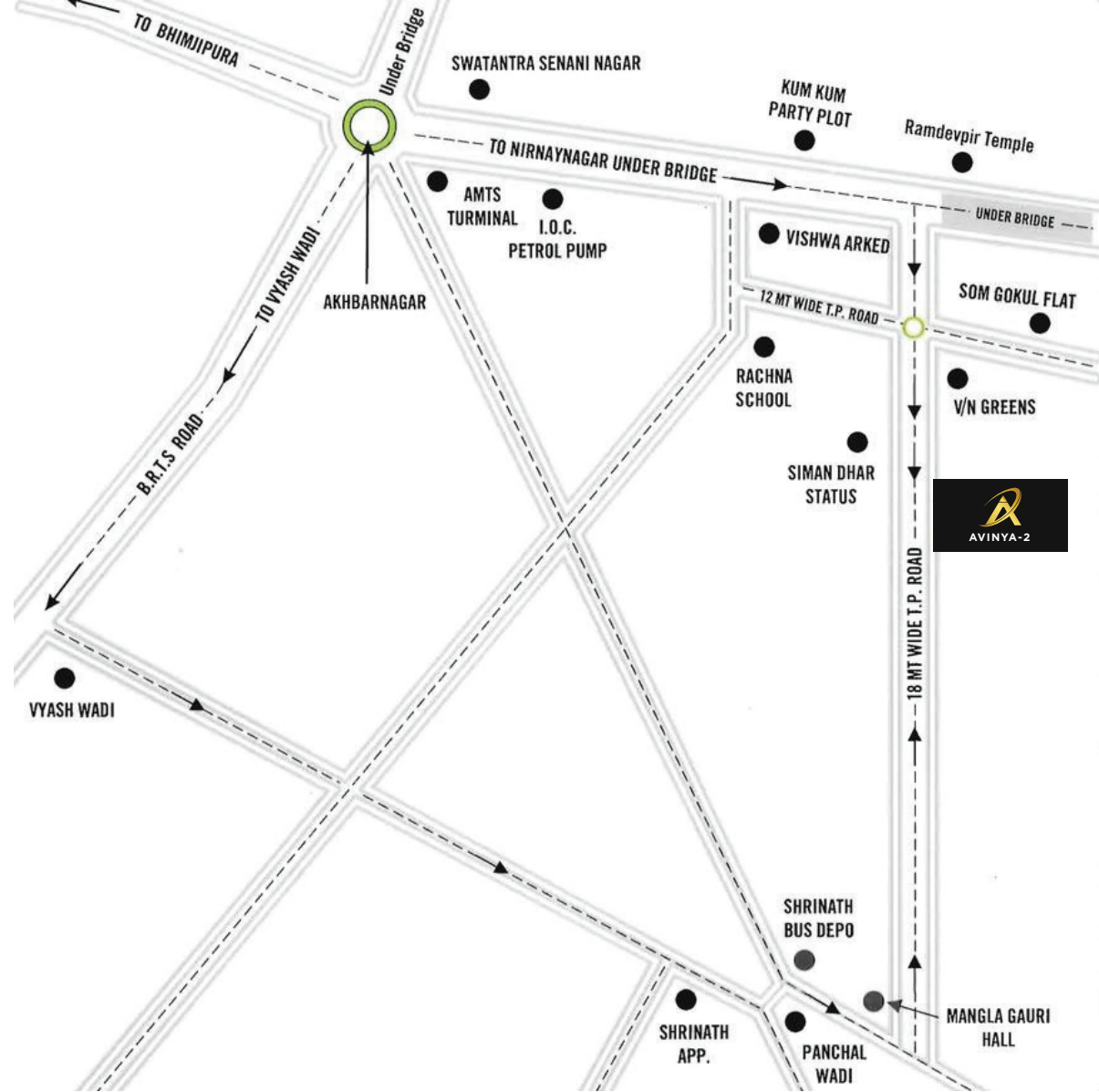


## Railings

- MS/Toughened glass railing



# WAY MAP



☎ 9898270020

✉ Avinyaone23@gmail.com

📍 **Site Address:** Avinya-2, Beside Aditya Icon, Nr. Nirnaynagar Underbridge, Akhbarnagar, Nava Wadaj

## DEVELOPER

Shree  
Uma Infracon

## STRUCTURE ENGINEER:

JAYESHBHAI PATEL

## ARCHITECT

