



KALHAR WING

4 BHK
MODERN LIVING

The Great Eastern Road, Nr. Kesar Hill,
Nikol, Ahmedabad, Gujarat 382421

M.: 98985 10853

DEVELOPERS :

OM
Corporation

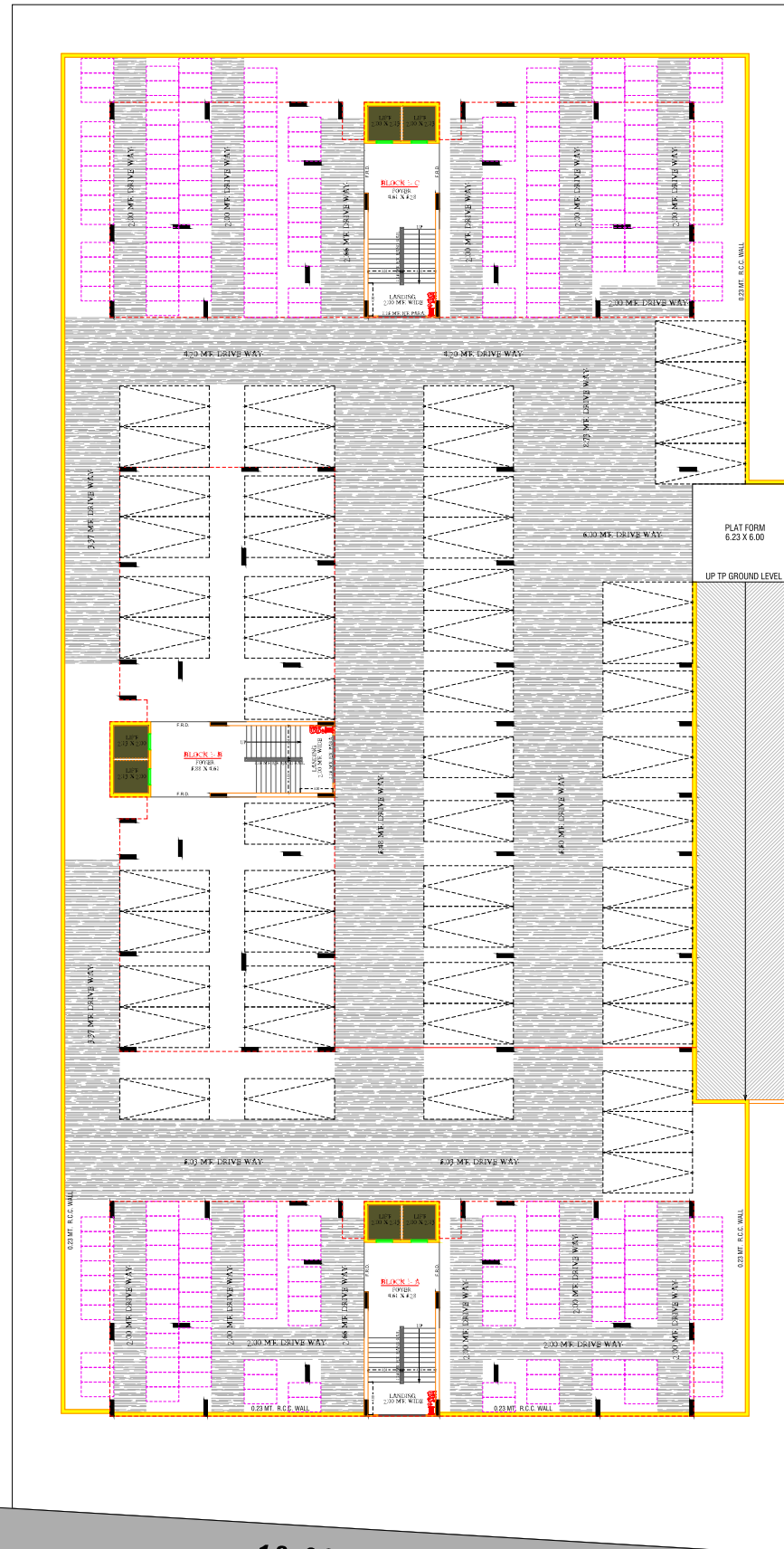
ARCHITECT



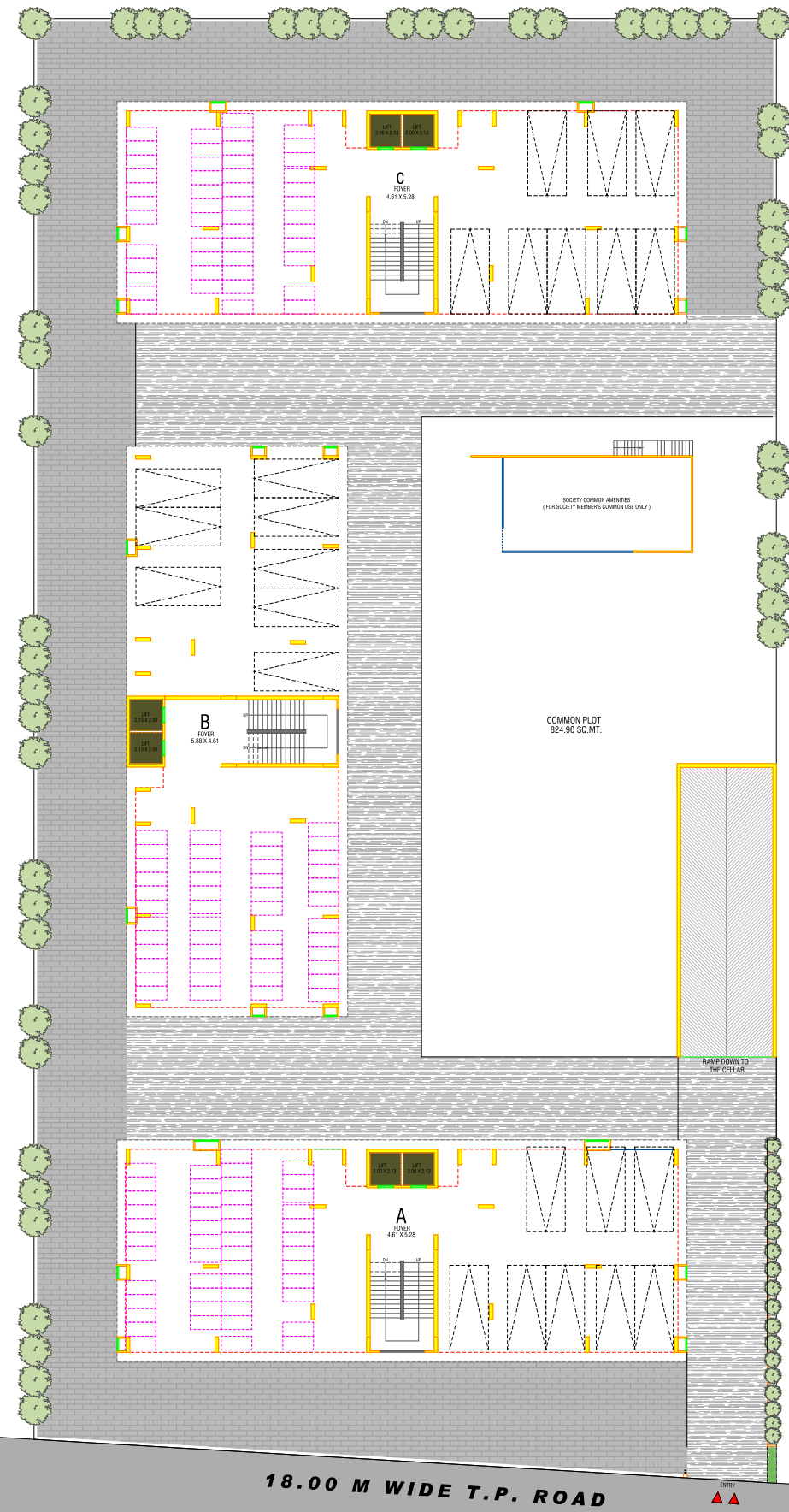
RERA NO. : _____
WEBSITE : www.gujrera.gujarat.gov.in



BASEMENT FLOOR



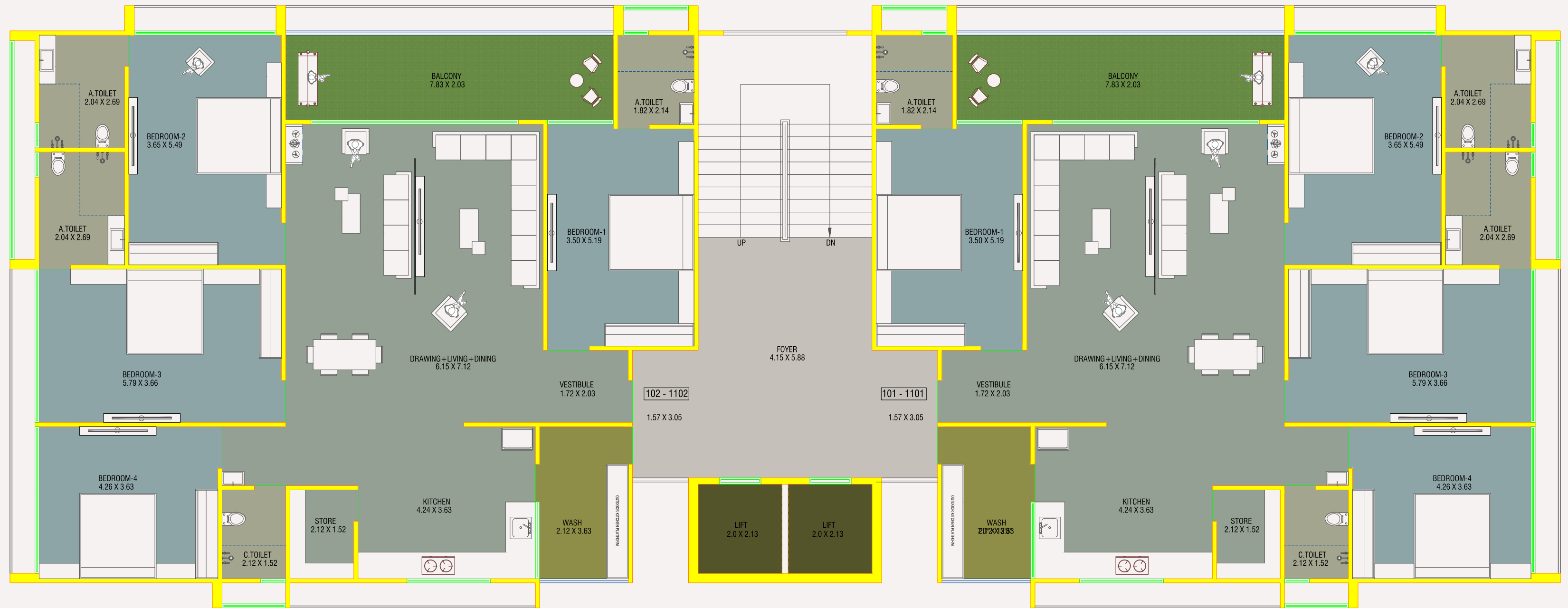
GROUND FLOOR

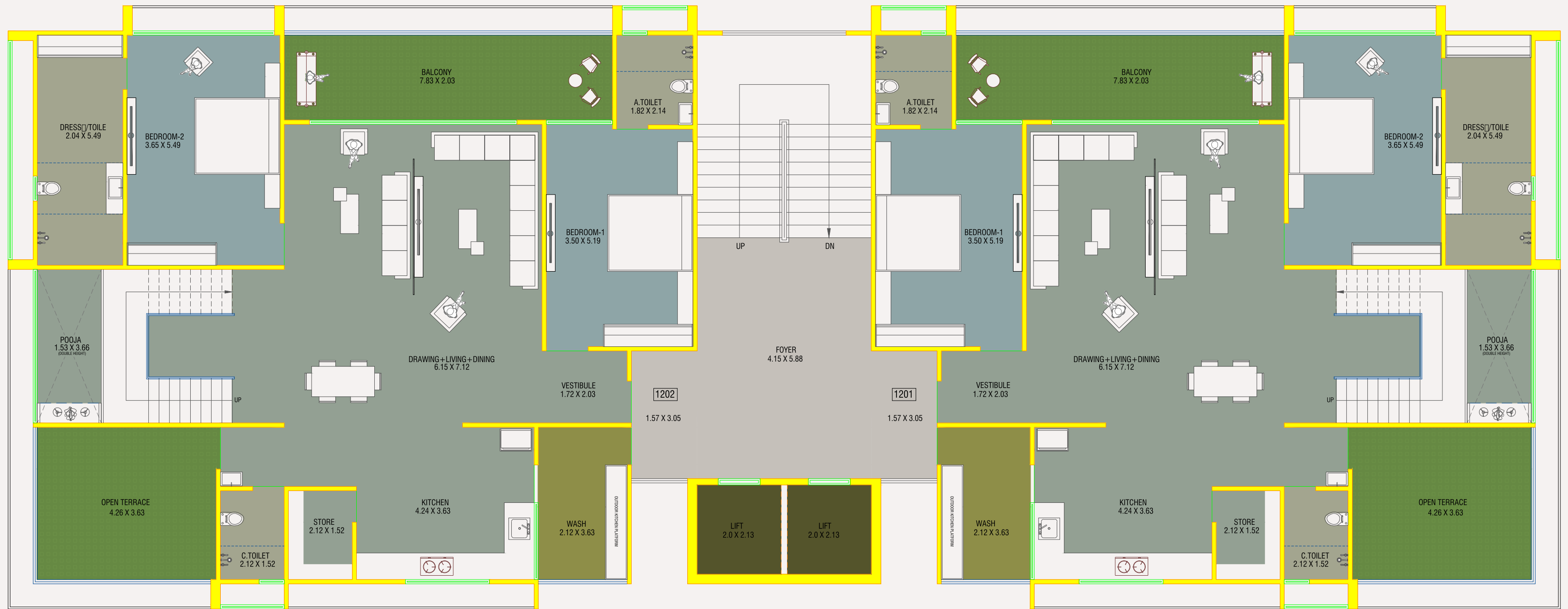


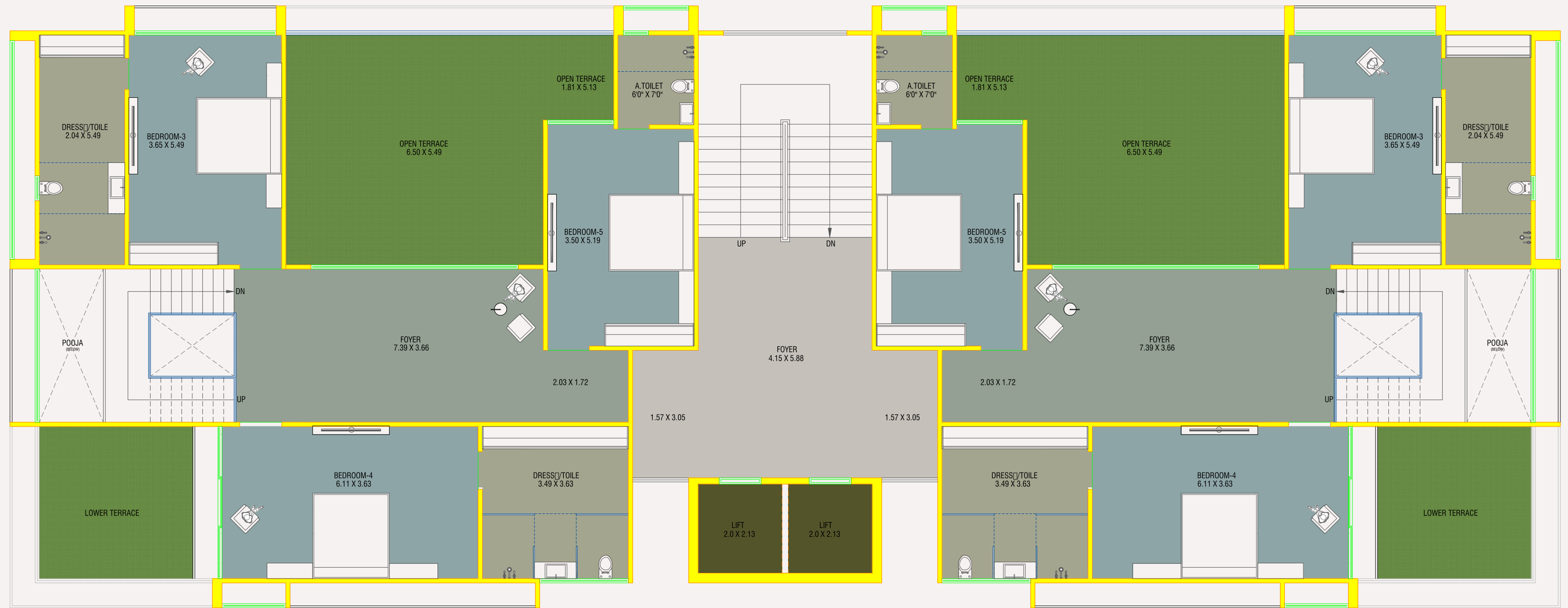
TYPICAL FLOOR



TYPICAL FLOOR_BLOCK_A & C



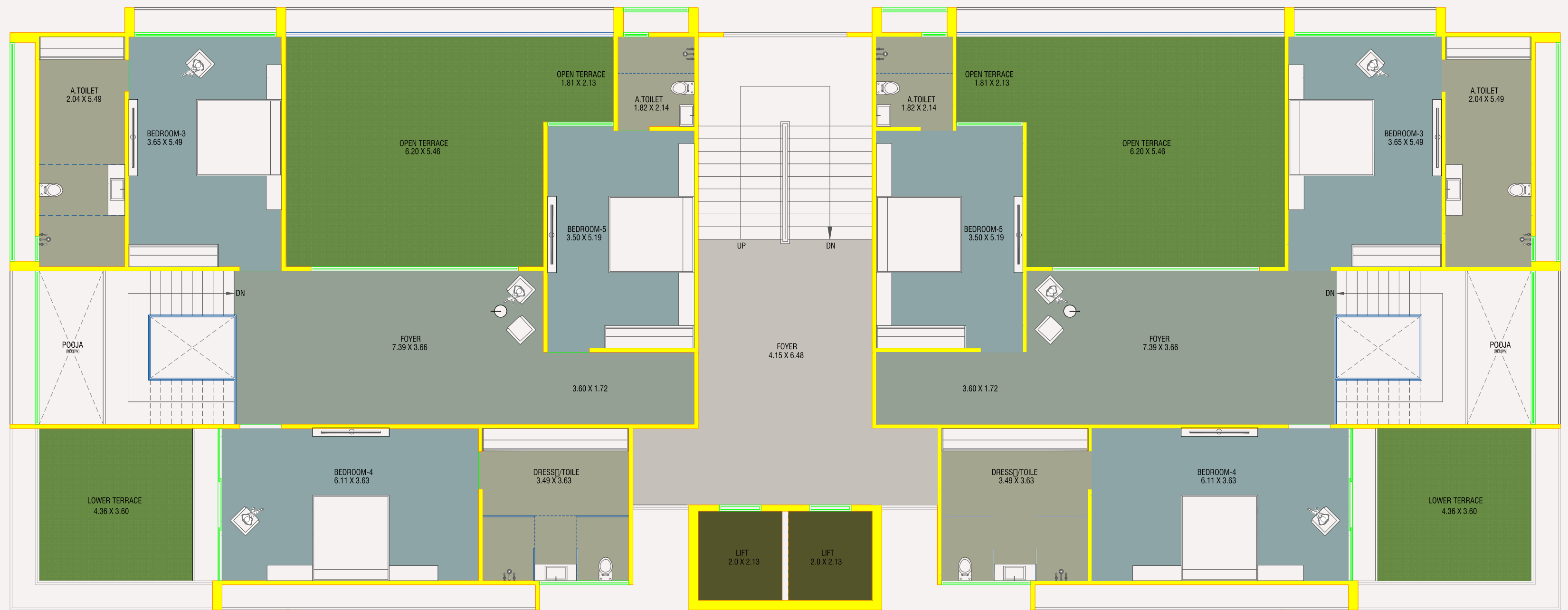




TYPICAL FLOOR_BLOCK_B







Specification

STRUCTURE

Earth quake resistant R.C.C. frame structure as per new laws.

FLOORING

2.5" X 5" Premium Quality Vitrified tiles for entire flooring in all apartments.

WALL FINISH / ELEVATION

Internal mala plaster with finish putty. attractive external elevation with double coat sand faced plaster texture.

DOORS & WINDOWS

Decorative main door & other flush doors. All windows in Domel Section with granite frame, standard quality window glass.

KITCHEN

Mirror polished granite platform with S.S. sink, Designer glaze tiles up to lintel level.

ELECTRIFICATION

Branded ISI modular switches with concealed copper wiring and the adequate number of points & ELCB/MCB distribution panel.

PLUMBING

ISI CPVC/UPVC pipes for water supply, PVC & SWR pipes for solid waster and drainage systems. percolation recharge wells as per the norms branded CP Fittings

TOILET

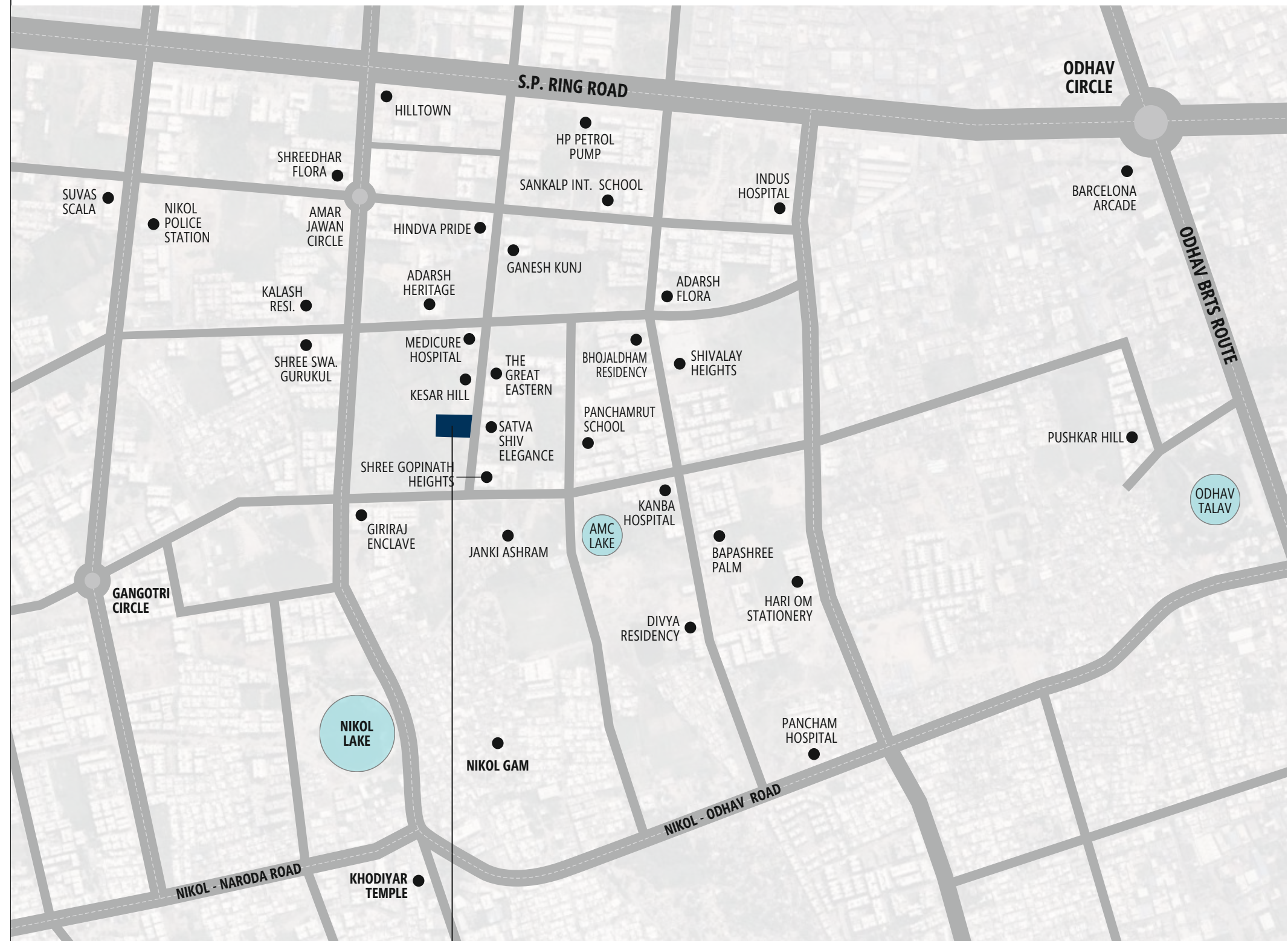
Designer tiles on floor and walls up to lintel level.
Branded sanitary & bath fittings. (Jaguar, Cera, Hindware & Others Premium Quality)

TERRACE

Brick-bat concrete with china mosaic for heat reflection and Thermal insulation with water proofing.

The Great Eastern Road, Nr. Kesar Hill,
Nikol, Ahmedabad, Gujarat 382421

M.: 98985 10853





**KALHAR
WING**

DEVELOPERS :

OM
Corporation

ARCHITECT


INNOVATIQ
ARCHITECTS