



GP HOMES PRIVATE LIMITED

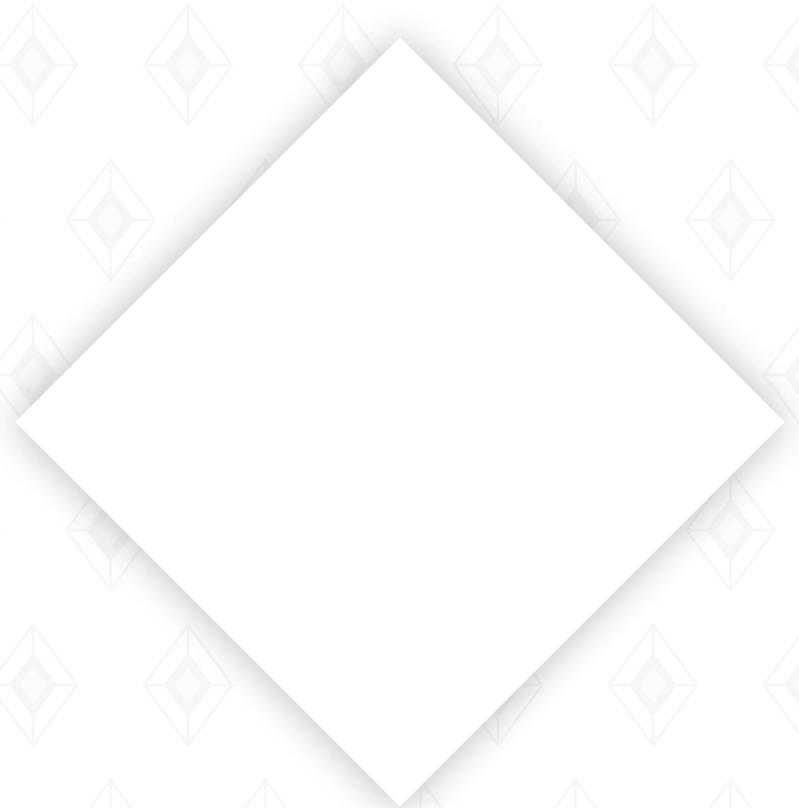
No. W-740, 4th Avenue Syndicate Bank Colony, Anna Nagar (West),  
Chennai - 600 101. Email: sales@gphomes.co.in | www.gphomes.co.in



FOR DETAILS  
**93444 81444**



Disclaimer: The information contained herein subject to change as may be required by the authorities and can't form an offer or contract.  
While every reasonable care has been taken in providing the information. GP homes or their agents can't be held responsible for any inaccuracies.  
GP Homes reserves the right to make alternations and amendments as may be necessitated from the time to time without prior notice.



PRECIOUSLY  
YOURS



A symbol of love and commitment, RUBY in Sanskrit means "Ratnaraj" or the "King of Precious Stones. Bringing this precious love of infinite value into your life with unwavering commitment is GP Homes. RUBY, a gem of a community in fine living, is a home to 35 lifestyle apartments near Velammal CBSE School at **Ayanambakkam**, a flourishing neighbourhood to Mugapair and Ambattur in Chennai.

We invite you to discover this unrivalled and unmatched precious lifestyle at RUBY. Truly, RUBY is a world of infinite happiness with abundant comfort and a forever symbol of love.



GPHOMES  
*Valencia*  
RUBY  
Ayanambakkam

Stilt +  
5 Floors

**35**  
Units

**2**  
Wings with  
2 & 3 BHK

**1**  
Covered  
Car Parking





2 BHK 912 - 930 Sq.Ft.

3 BHK 1192 - 1283 Sq.ft.



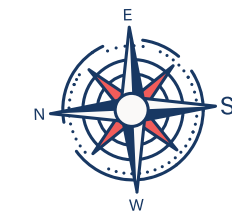
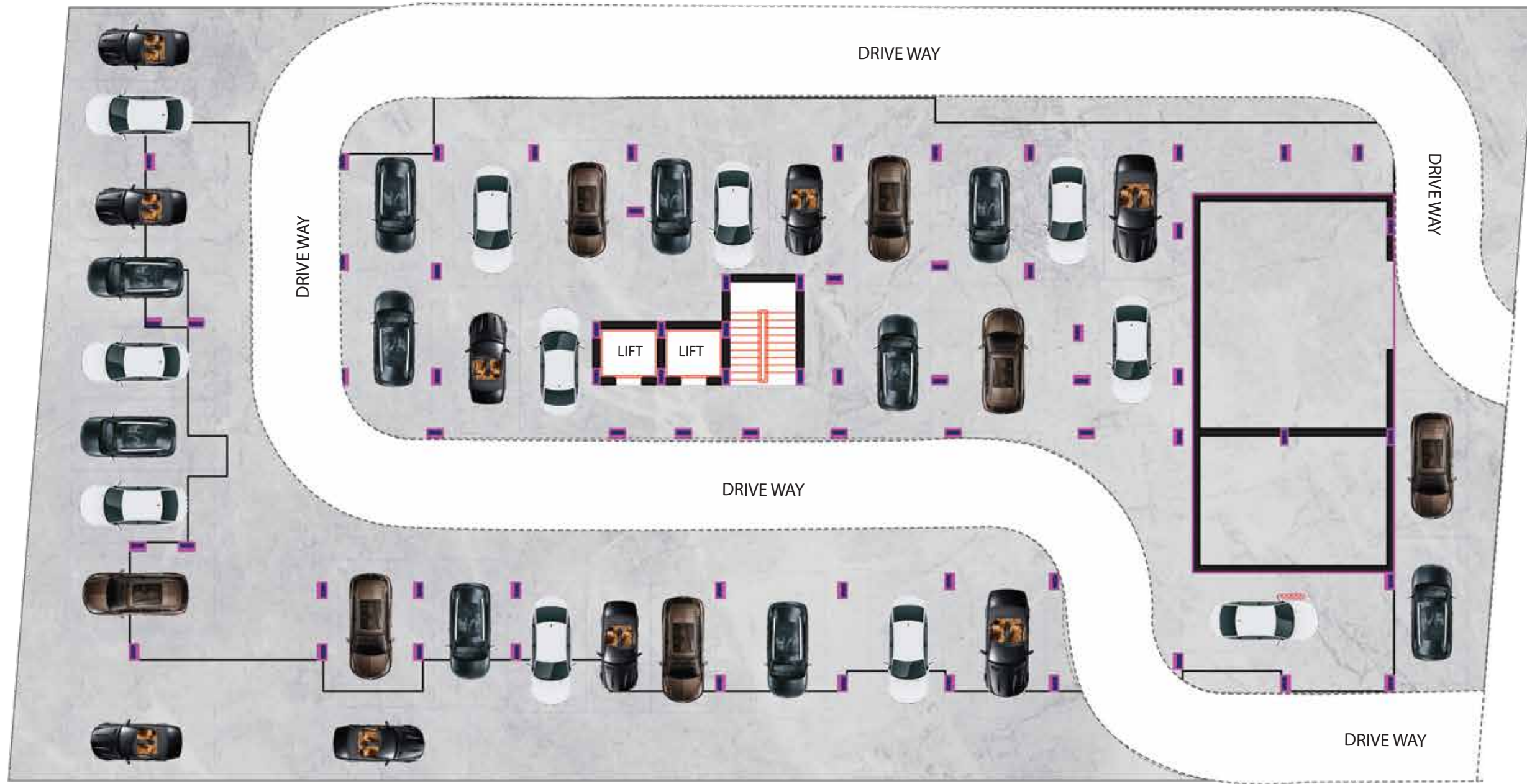
## *Preciously Exclusive*

RUBY is a precious gift of life for you and family. An enchanting home to 32 upscale apartments, RUBY homes are exclusive in architecture, exceptional in detailing and excellent in space efficiency. The homes are truly adaptive to your personal space and comes loaded with sophisticated fittings and fixtures that are simply unrivalled in quality and finish.

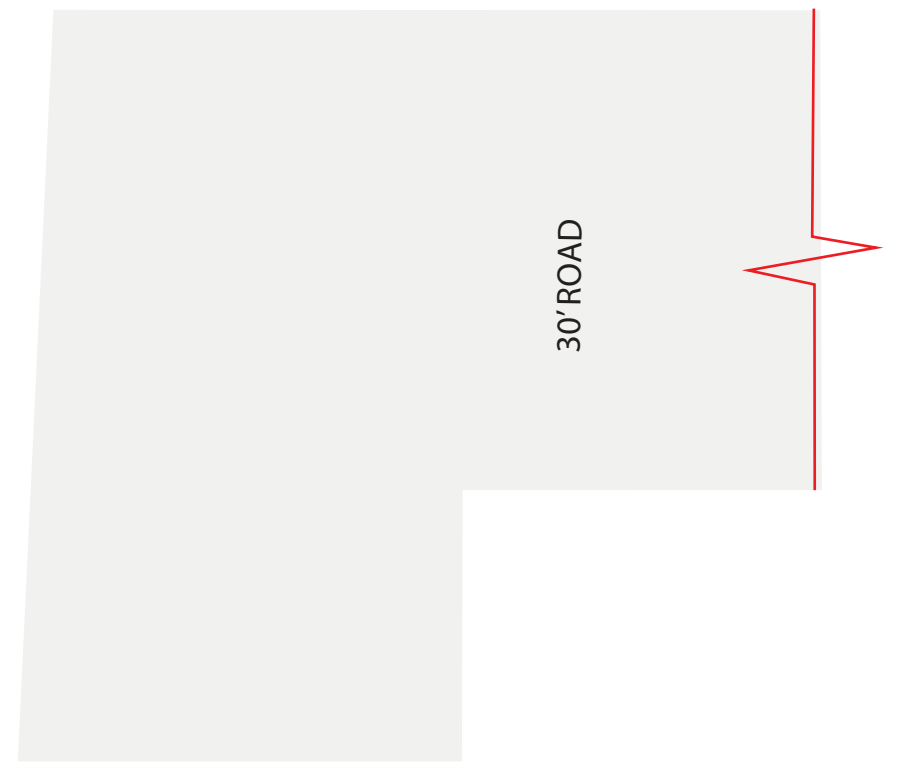
RUBY, a refined collection of living spaces, bring together comfort and convenience of living a contemporary lifestyle. The spacious 2 BHK and 3 BHK homes with large living room to amply ventilated kitchen space, entertaining dining to spacious bathrooms, every space is designed to celebrate fine living in style.

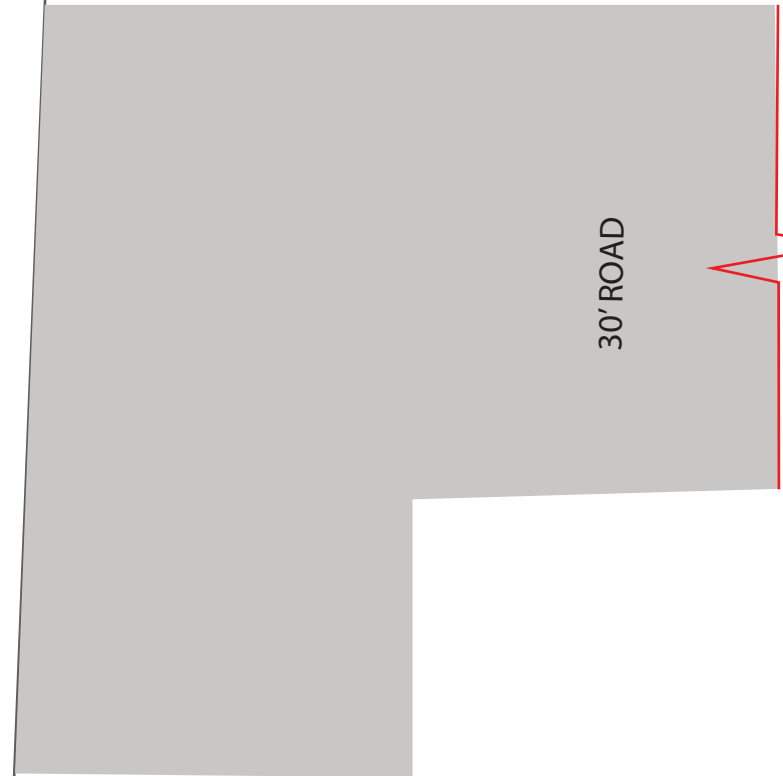
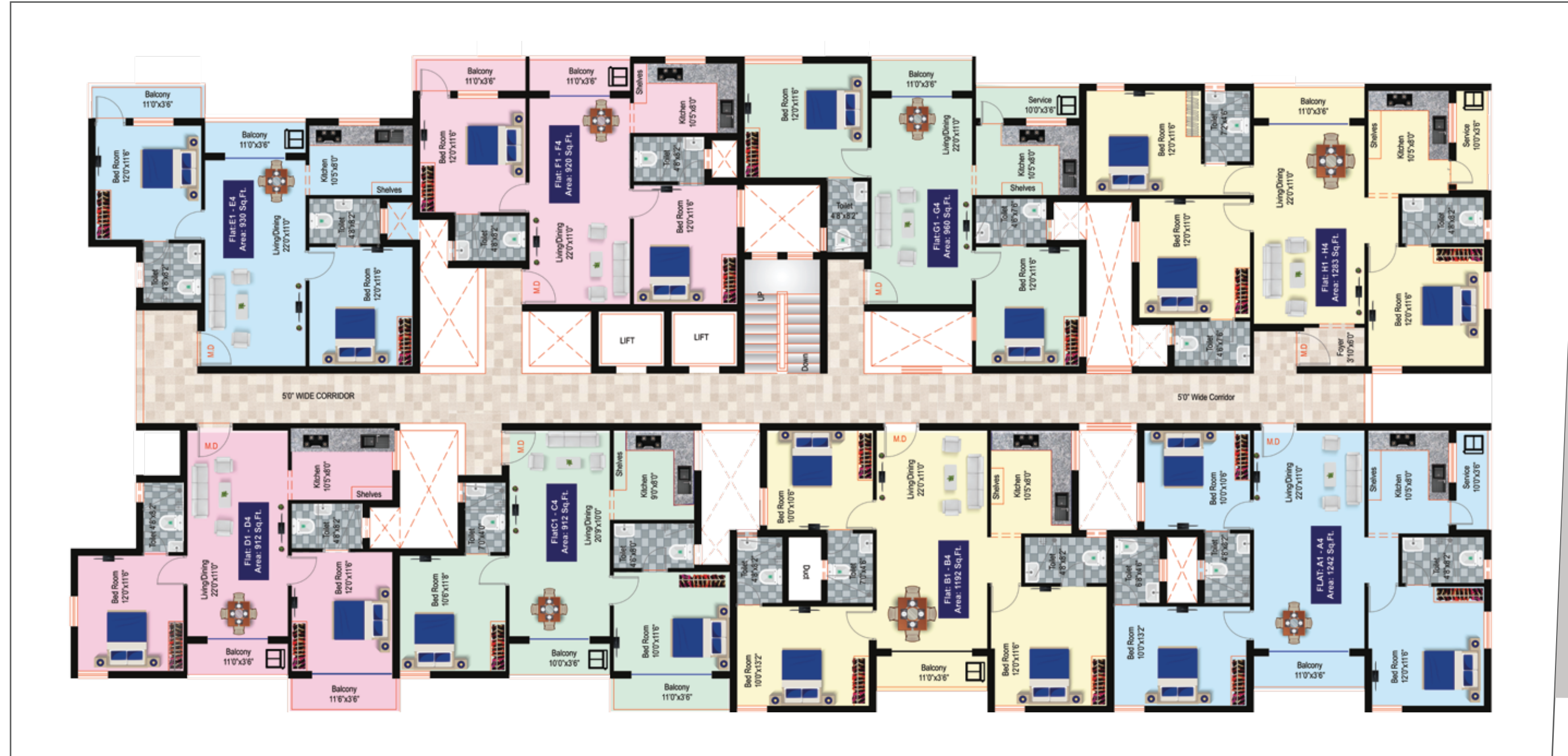
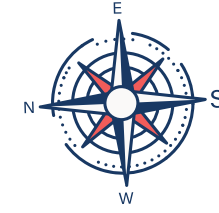
Come, live your precious life at RUBY.



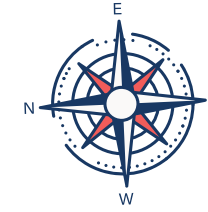


GPHOMES  
*Valencia*  
 Ruby  
 Car Parking

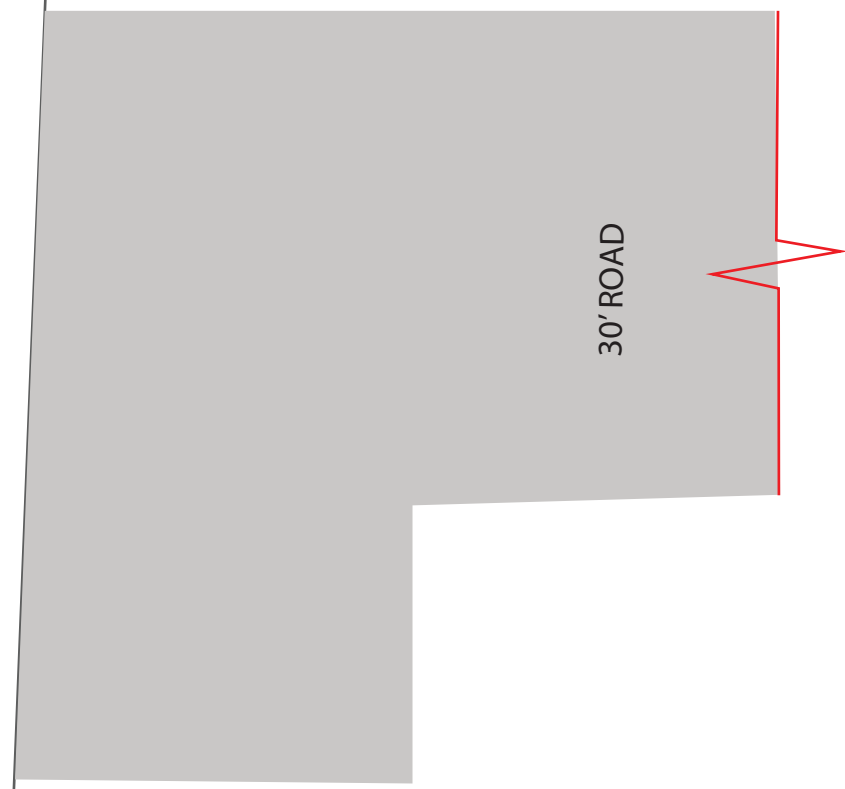




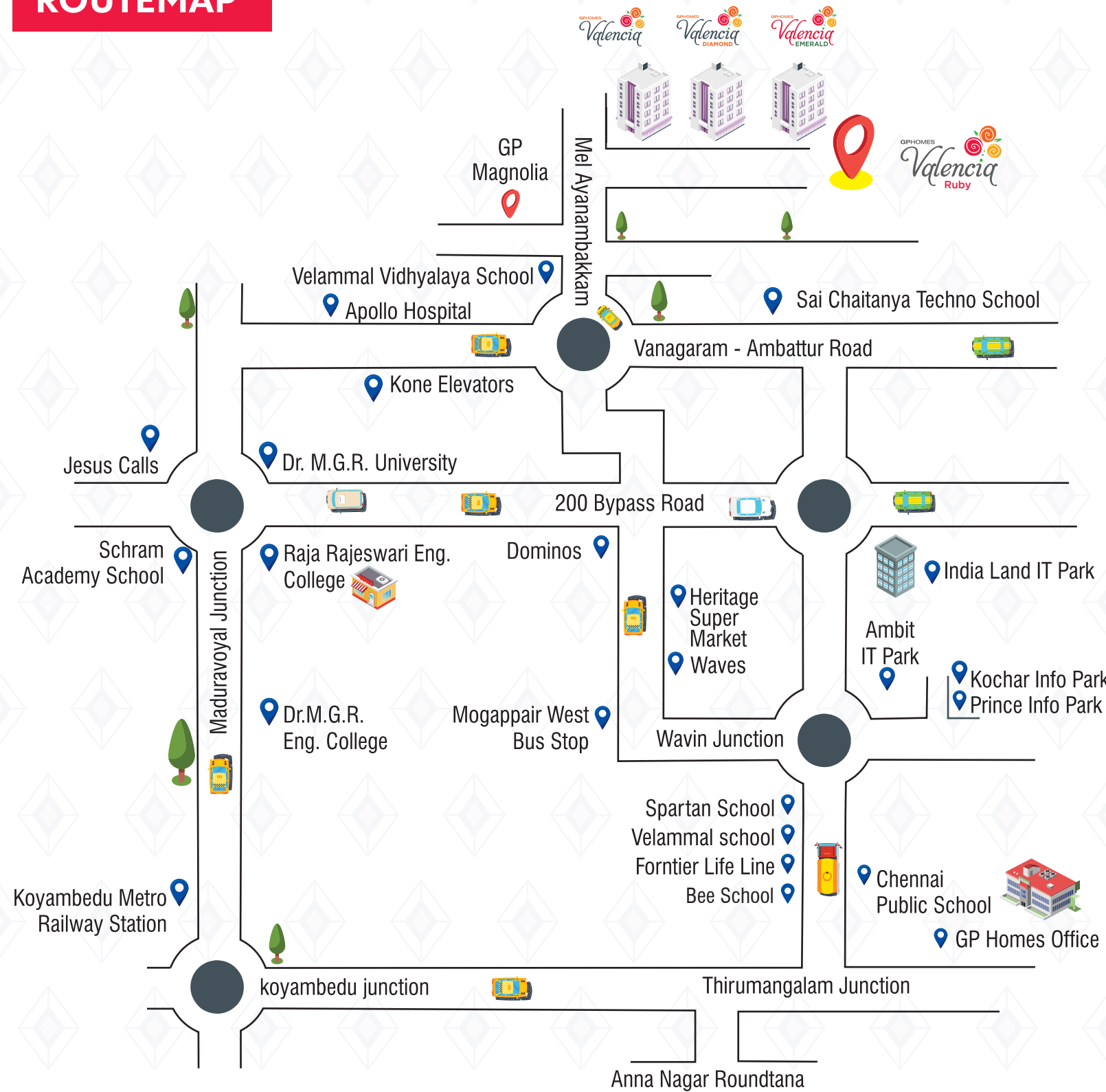




TYPICAL FLOOR PLAN  
 (5th Floor)



# ROUTEMAP



## *The Road to Precious Lifestyle*

Ayanambakkam is one of the prime residential suburb located in the northern parts of Chennai city. It is a flourishing neighbourhood to employment hubs of Ambattur Industrial Estate and Oragadam. Blessed with its strategic location and excellent connectivity, travelling to and fro from different parts of the city to Ayanambakkam is easier, faster and hassle free. The best is, Ayanambakkam is surrounded by reputed schools, colleges, hospitals and residential townships and communities. It is here RUBY by GP Homes arises to offer you the best in fine living.



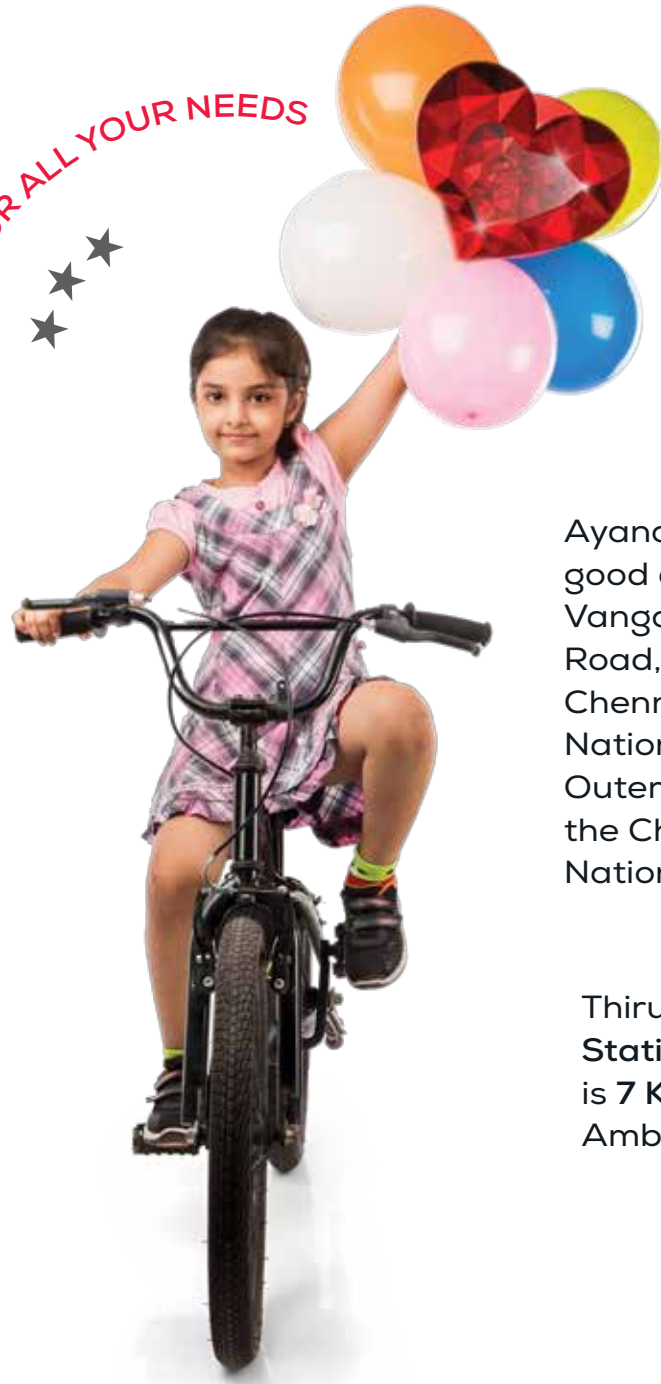


## *Luxury In Every Detail*

RUBY is more than a home. It is your peaceful sanctuary. The meticulous planned design with premium specifications, high-end fittings and lush finishes enrich your upscale lifestyle. As a proud owner of RUBY, you'll combine a home life of elegant luxury and casual relaxation in living spaces that are abundantly yours. Detailed planning that goes into the making of every room in your home open the door to a sophisticated lifestyle.

Come, cherish the high value living at RUBY.

EASY ACCESS FOR ALL YOUR NEEDS



Ayanambakkam offers an easy approach to **Ambattur Railway Station 3 Kms** which can be accessed via Ayanambakkam Road and Ambattur Road.

Through SH 55 & NH 45, one can reach **Chennai International Airport**, which is **21Km** away from Ayanambakkam

Ayanambakkam enjoys good connectivity to Vangagram-Ambattur Road, NH 48 Chennai-Bengaluru National Highway, Elevated Outer Ring Road connecting the Chennai-Kolkata National Highway.

Thirumangalam **Metro Station** on the Green Line is **7 Kms** through Ambattur Estate Road.

#### NEAR BY EDUCATIONAL INSTITUTIONS

- Velammal Vidhyalaya School
- Sai Chaitanya Techno School
- Schram Academy School
- Dr. MGR University
- Raja Rajeswari Eng. College
- Spartan Matriculation School
- DAV Matriculation School
- Aachi Global School

#### NEAR BY HOSPITAL

- Apollo Hospital
- Sundaram Medical Foundation
- Lifeline Hospitals
- Aravind Eye Hospital
- Saveetha Dental College & Hospitals
- Ramachandra Hospital
- Apollo Speciality Hospitals
- New Life Hospitals
- ACS Medical College and Hospital
- Chennai Hospital
- Divya Hospital

#### NEARBY ENTERTAINMENT HUBS

- VR Mall
- Rakki Cinema
- AGS Cinemas
- Decathlon Sports Chandra Metro Mall

#### NEARBY EMPLOYMENT HUBS

- Ambattur Industrial Estate 2 Kms
- Kosmo One 4 Kms
- Oragadam 8 Kms
- Commer Zone 9 Kms
- Tamarai Tech Park 14 Kms
- Olympia Technology Park 14 Kms
- Guindy Industrial Estate 15 Kms





## UPSCALE SPECIFICATIONS

STRUCTURE	: RCC framed structure with quality Aerocon blocks Masonry made structure designed stilt +5.
WALLS	: Outer walls will be 9" masonry Aerocon blocks work and inner partition walls be of 4" Aerocon blocks.
JOINERIES	
Main Door	: First quality Teak wood frame with teak panel door fully polished.
Bed Room Door	: Teak wood frame with imported doors.
Toilet Door	: Water proof coated doors.
Balcony	
Service Area	: French & Flim Coated Doors.
Window	: UPVC window.
PLASTERING	: Ceilings and Outer walls are rough finished with sponges were as the inner walls are smooth finished.
ELECTRICAL	: Three phase electrical circuit. Quality wires, fixtures And switches as per standard in concealed PVC Conduits. AC and Geyser provisions in all bedrooms and toilets respectively.
PLUMBING	: Standard PVC and CPVC for all Inner pipes lines . ISI Pipes for Outer open waterline.
WATER SUPPLY	: Deep bore provided for ground water with underground sump.
PAINTING	: One coat of primer over two coats of putty. Finalized with two coats of standard premium emulsion.
TILES	: Branded Vitrified tiles.
CARPET AREA	: 24" X 24" Vitrified tiles.
BALCONY	: 12" X 12" Anti-skid tiles.
KITCHEN	: 2' wide black polished Granite platform with 24" X 18" stainless steel sink for the counter. 4'0" height wall tiles above the kitchen.
TOILET	: 7'0" height glossy wall tile with Anti-skid tiles for the flooring.
LOFT	: Offered in kitchen and all bedroom.
PARKING	: Cement Grano Flooring.
SETBACK AREA	: Paving Blocks.
GENERAL	: Granite for passage & staircase with SS Handrail. Rain water harvesting. Common overhead tank. Compound wall with appropriate gates and Common lightes wherever required.
LIFT	: 2 Numbers of Branded Passengers Lifts.
TERRACE	: Temperature Controlling Cooling Tiles.



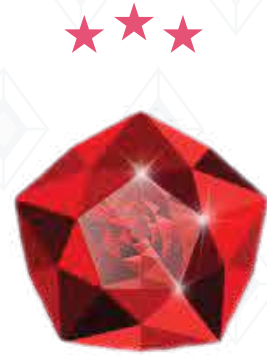
High Profile  
Educational  
Institutions

HiFi  
Residential Cum  
Commercial Area

Natural &  
Cross  
Ventilation

As per Vasthu  
24x7  
Security





## *Building values. Delivering excellences.*

GP Homes. We are a trusted builder of repute with 18 years of experience in the world of construction and property development. We have build a legacy of trust by developing value appreciating assets that stand tall as a testimonial to our quality and timely delivery.

Pursuing our commitment and passion to deliver the best to customer's satisfaction has made us what we are today, one of the most trusted builders to seek for excellence in quality construction.

In our cherished endeavour to change the skylines of Chennai and cement quality living, we have delivered over 200 plus lifestyle homes and nurtured the trust of over 1500 plus happy and satisfied customers.

And the count is still on with more projects in the pipeline.

18 Years / 200+ Prestigious Projects / 1500+ Happy & Satisfied Customers

## PRESTIGIOUS ONGOING PROJECTS



GP HOMES BLAZING STAR  
PORUR



GP HOMES ELANZA  
MADHANANDHAPURAM



GP HOMES BREEZE WAY  
AMBATTUR



GP HOMES PEACE RHYTHM  
KORATTUR



GP HOMES PLOTS AISHWARYA GARDEN  
PAKKAM



GP HOMES PLOTS PEARL HERITAGE  
AYANAMBAKKAM

ONGOING PROJECTS