

TRICITY  
**AURA**  
ROADPALI



1 & 2 BED EXCLUSIVE RESIDENCES



## APEX DISCOVERY

*A vibe of The Palm Beach Road*

### DISCOVER THE EPITOME OF REFINED LIVING

Welcome to Tricity Aura, an exquisite retreat where luxury living harmonizes with the tranquil beauty. Strategically nestled in Roadpali, our residences offer an unparalleled blend of contemporary elegance and natural tranquility, mirroring the iconic ambiance of Palm Beach Road.

Just like its renowned counterpart, driving along the scenic causeway offers a sense of escape and relaxation, similarly, Tricity Aura presents residents with stunning shoreline vistas and a serene environment conducive to relaxation and rejuvenation.

Residents can escape the hustle and bustle of the city and immerse themselves in the captivating essence of shoreline living. Immerse yourself in the allure of shoreline living and embark on a journey where every moment is a reflection of luxury and tranquility.







UNFLAWED ELEGANCE  
IN EVERY FACET

## APEX PROMINENCE

*Exposure To Elevated Lifestyle.*

### STUNNING ARCHITECTURE

With its meticulous attention to detail and captivating architectural elements, setting the standard for modern luxury and timeless sophistication.

### GRANDOISE LIFESTYLE

Step into the realm of lavish living, where each day unfolds like a masterpiece, adorned with elegance, extravagance, and the sweetest indulgences.

### MAGNIFICENT OUTDOORS

Discover endless adventure and relaxation with our awesome outdoor amenities & bask in the beauty of nature and engage in exhilarating activities.

### PROMINENT LOCATION

The perfect blend of accessibility and serenity with our prime location, strategically positioned to provide seamless connectivity to the city life.



STOCK IMAGE



## APEX LUXURY

*Indulgence To Elevated Existence.*

At Aura, elevate your lifestyle with a plethora of modern amenities catering to your every need.

Stay fit and healthy at our state-of-the-art fitness centre, or find your inner peace in our dedicated Yoga & Zumba room. Enjoy peace of mind with our convenient day care facility and watch your little ones thrive in the kids play area and indoor play area. Take a leisurely stroll along the walking trail, unwind in the serene ambiance of the gazebo, or host memorable gatherings at our barbecue area. Indulge in fun and games at our gaming zone, while our senior citizen area offers a tranquil space for relaxation. Boost productivity in our shared workspace and conference room, or escape into a world of literature in the reading room.

WHATEVER YOUR LIFESTYLE DESIRES,  
FIND IT ALL AT AURA.

# EXPERIENCE LEISURE

# REDEFINED

STOCK IMAGE

## AMENITIES DESIGNED

*TO ENHANCE EVERY MOMENT*

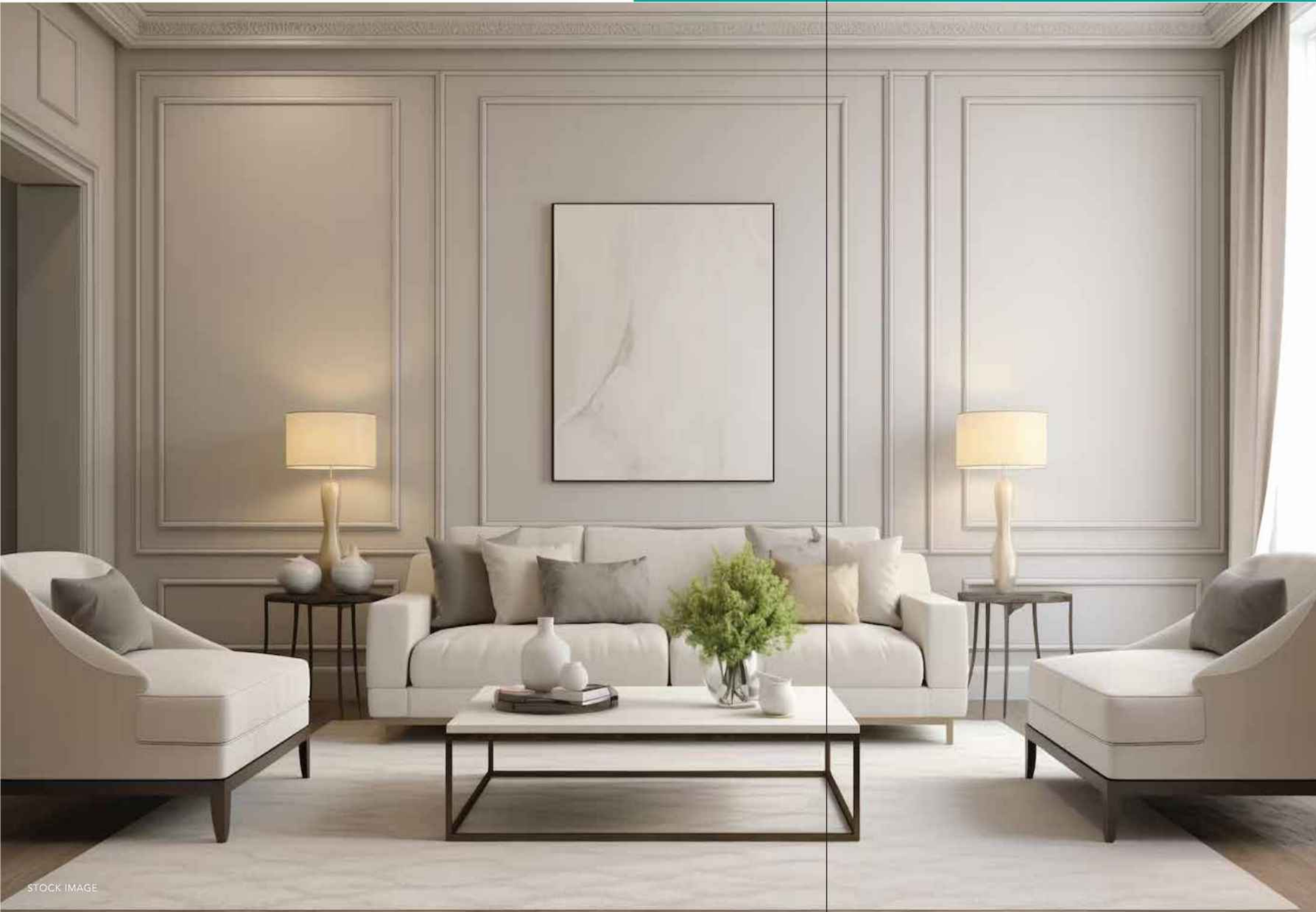


All the images are for presentational purpose only. Actual offering may vary.





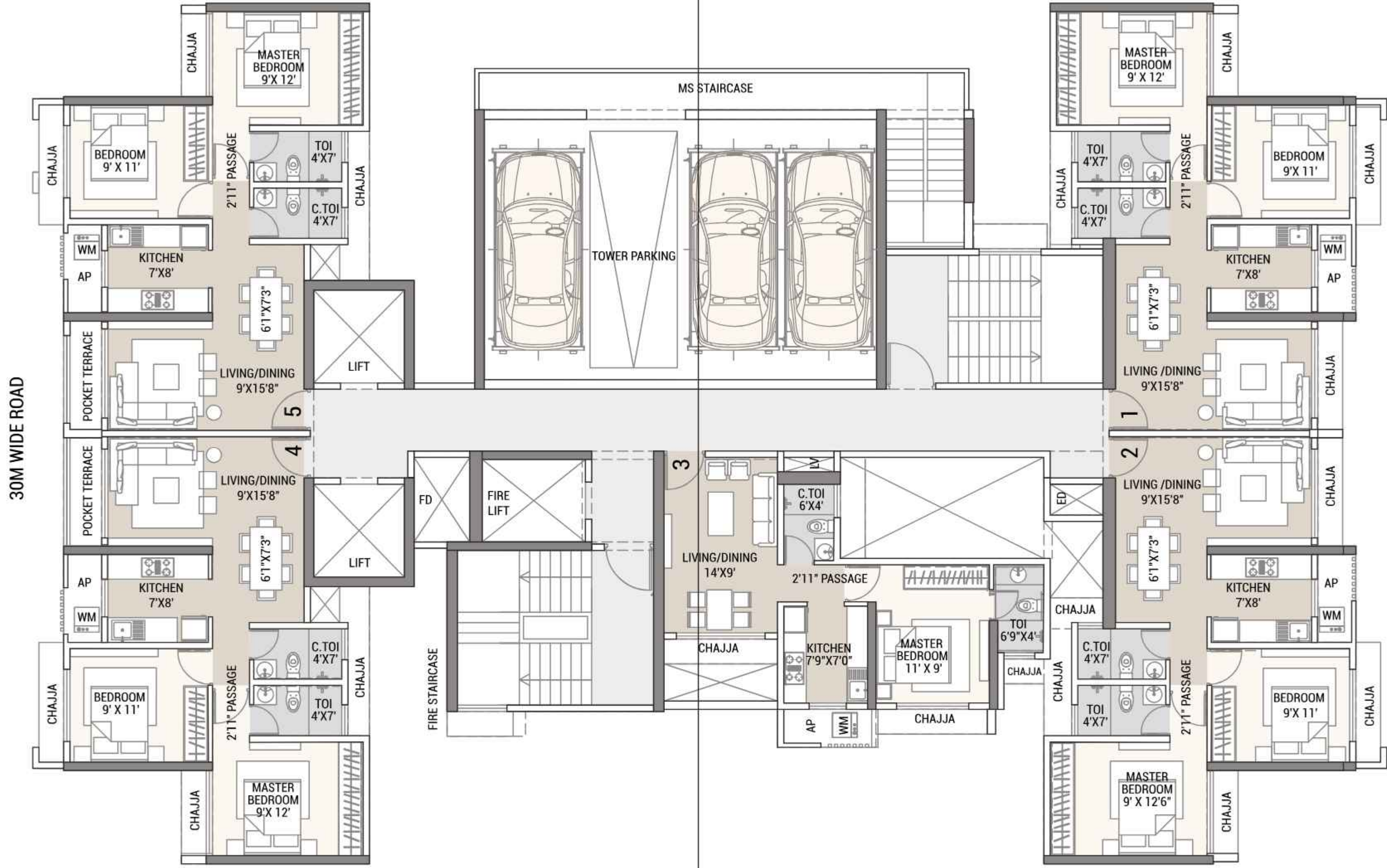
## EXPERIENCE THE CALM IN YOUR TRANQUIL HAVEN



DISCOVER YOUR PERFECT SANCTUARY AT AURA, WHERE EVERY ABODE IS METICULOUSLY CRAFTED FOR COMFORT AND STYLE. FROM COZY TO SPACIOUS APARTMENTS, EACH RESIDENCE OFFERS A SEAMLESS BLEND OF MODERN DESIGN AND FUNCTIONALITY. EXPERIENCE THE EPITOME OF URBAN LIVING AT AURA.







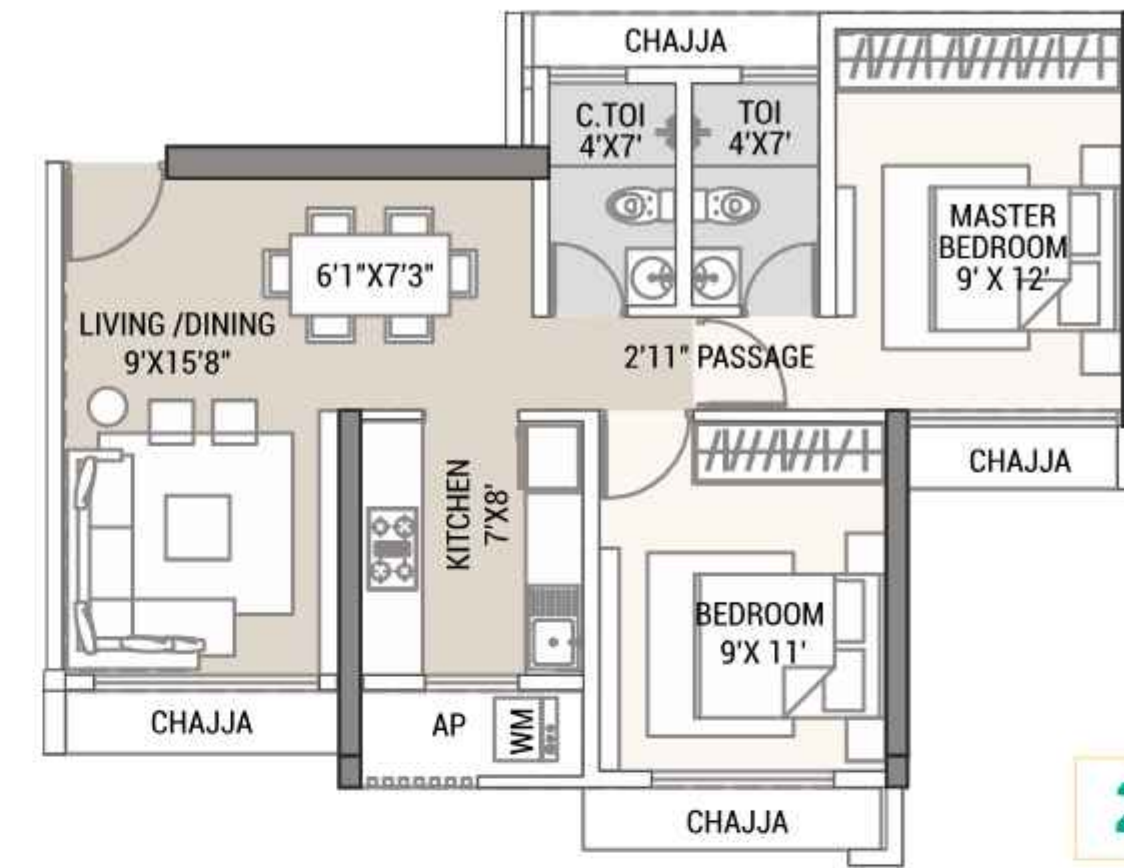
Some dimensions have been rounded up to 2 Inches

# TYPICAL FLOOR PLAN

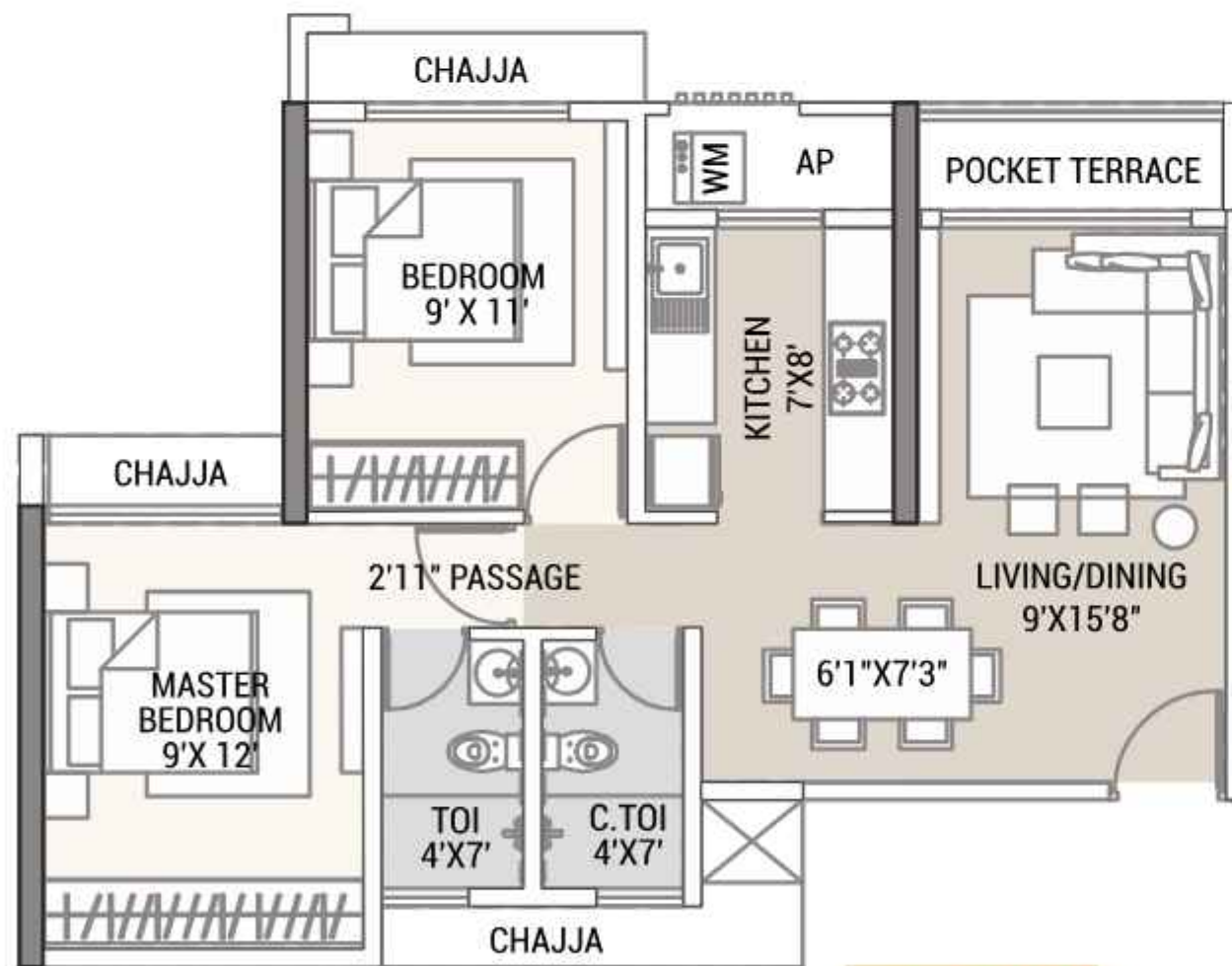




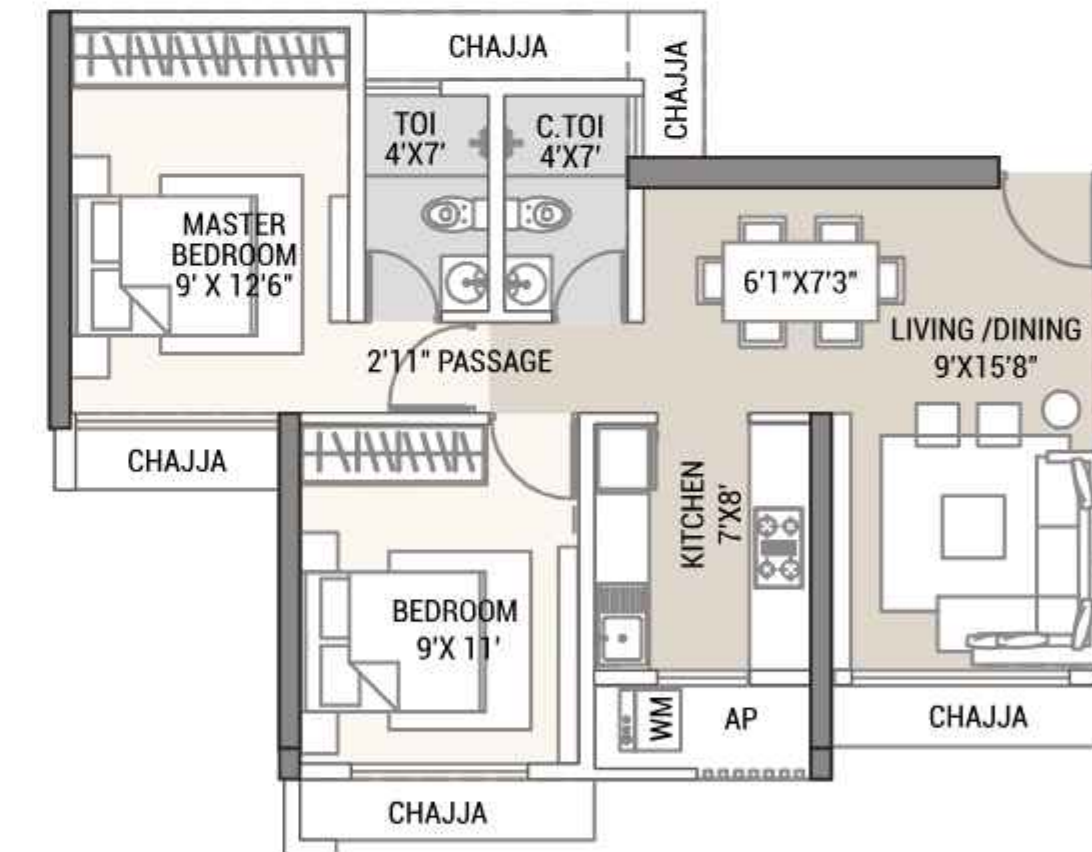
**1 BHK**  
Series 03



**2 BHK**  
Series 01



**2 BHK**  
Series 04 & 05



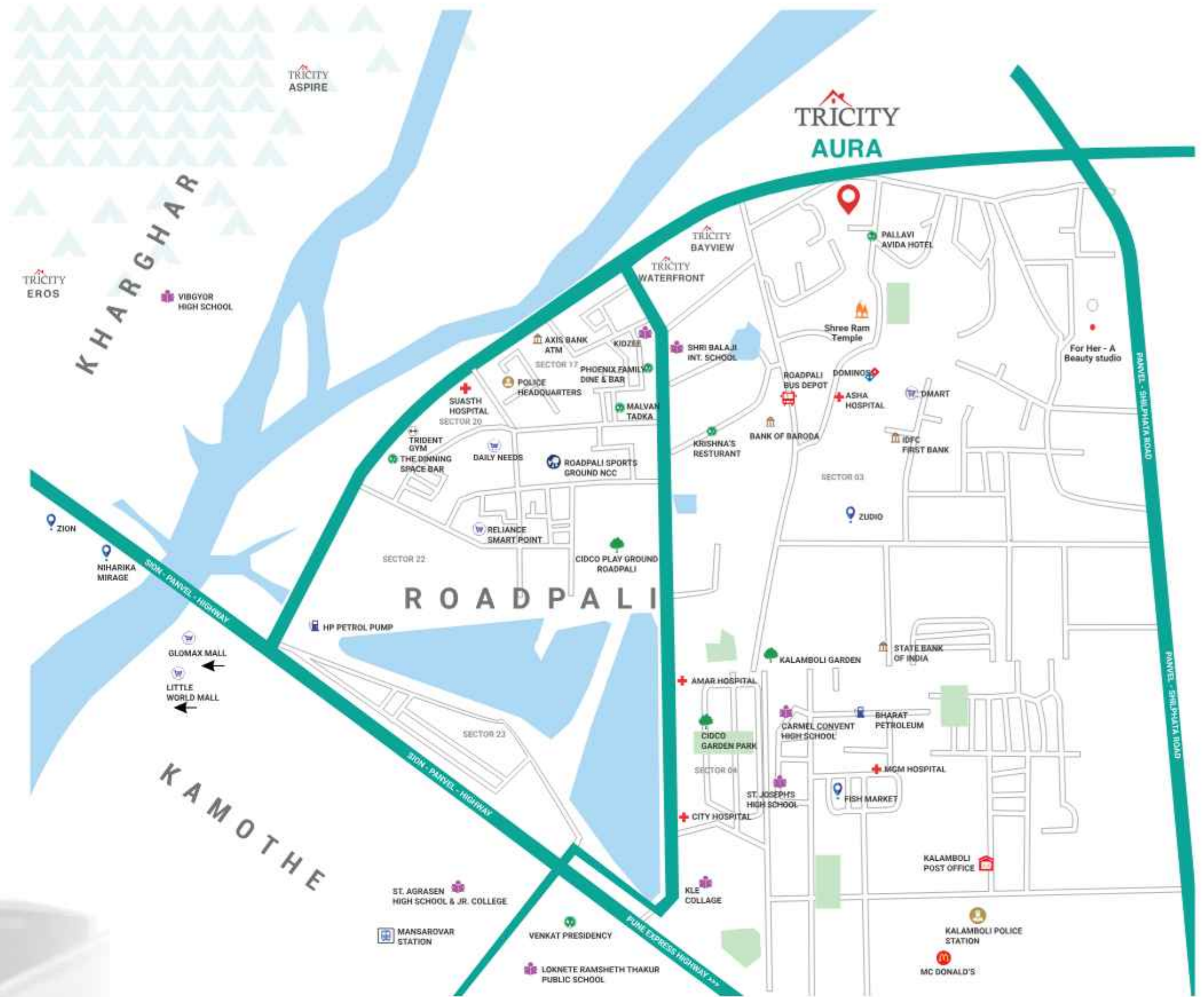
**2 BHK**  
Series 02

Some dimensions have been rounded up to 2 inches.



## CONNECTIVITY: *Bridging Distances, Uniting Cities.*

At Tricity Aura, connectivity is not just a promise but a reality. Situated close to the bustling Sion-Panvel highway and within a brief proximity to Mansarovar Railway Station, our residents have privilege to an unparalleled access to the region's key transportation hubs. With the seamless connectivity to major thoroughfares and public transit options, including the Metro Station just minutes away and futuristic extension of metro line 1, commuting becomes like a breeze. Experience the urban living redefined at Tricity Aura, where every journey is an exhilarating experience.



### Recreation

Mata Ramai Udyaan - 700 m  
Roadpali Sports Ground - 1.2 km  
CIDCO Public Park - 1.7 km  
Kalamboli Garden - 1.7 km

### Hospitals

Medicare Multispeciality Hospital - 1 km  
Suasth Hospital - 1.1 km  
Shri Samarth Childrens Hospital - 1.3 km  
Zen Multi Specialty Hospital - 2.0 km

### Schools

Shri Balaji International School - 750 m  
Podar Jumbo Kids - 1.1 km  
Iqra International school - 1.3 km  
Vibgyor High School, Kharghar - 5.1 km

### Restaurants

Domino's Pizza- 950 m  
Malvan Tadka - 1 km  
Phoenix Family Dine & Bar - 1.1 km  
Mc Donald's - 3 km

### Entertainment

Oracle Fun Square - 4.9 km  
Carnival Cinemas - 5.2 km  
BMX Cinemas - 5.3 km  
PVR Cinemas - 6.7 km

### Colleges

P.J Mhatre College - 1.7 km  
Samal Mohan Patil Jr. College - 1.8 km  
KLE College - 2.3 km  
St. Agrasen Jr. College - 3.8 km

### Corporate Houses

Zion - 3.9 km  
Niharika Mirage Kharghar - 4 km  
Millenium Empire - 4.4 km  
Sawan Highness - 5.9 km

### Connectivity

Roadpali Bus Depot (Upcoming) - 1 km  
Sion Panvel Highway - 2 km  
Pune Express Highway - 4.2 km  
Mansarovar station - 4.5 Km

### Market

Reliance Smart Point - 400 m  
D Mart - 850 m  
Paras Super Market - 1 km  
Daily Needs - 1.3 km





**2 DECADES** IN REAL ESTATE

**OVER 6.1 MILLION** SQ. FT. OF DEVELOPMENT

#### SITE ADDRESS

Tricity Aura, Plot No.10D, Sector 16E, Roadpali, Navi Mumbai, Maharashtra 410218

#### CORPORATE ADDRESS

Tricity Realty LLP, 1001/02, Bhumi Raj Costarica Plot No.1 & 2, Off, Palm Beach Rd, Sector 18, Sanpada, Navi Mumbai, Maharashtra 400705

Call : 8088 120 120, 022 6676 6676 | Email : [sales@tricityltd.com](mailto:sales@tricityltd.com) | Website : [www.tricityltd.com](http://www.tricityltd.com)

Disclaimer. The information contained in this communication is intended, solely to provide general information for discussion purposes to the prospective buyer and will not constitute or form part of any agreement or form the basis of any contract. This does not constitute to any offer / invitation to offer or sale. No warranty, neither representation not covenant is given or implied as to the accuracy of the whole or any part of this information. All renderings, floor plans, pictures, maps, drawings, amenities, facilities etc. are the artists conceptions and not actual depictions of the building, its walls, roadways or landscaping. Some dimensions in floor layouts have been rounded up to 2 inches. The design, specification and proposed development specified in the brochure are subject to the approval of the respective authorities and would be changed, if necessary. The discretion remains with the developer. This brochure is for guidance and not a legal document. This brochure should also not be reproduced, copied or made available to others in any form of transmission other than intended by the developer. Visit <https://www.maharera.mahaonline.gov.in> | MahaRERA: P52000055973

