

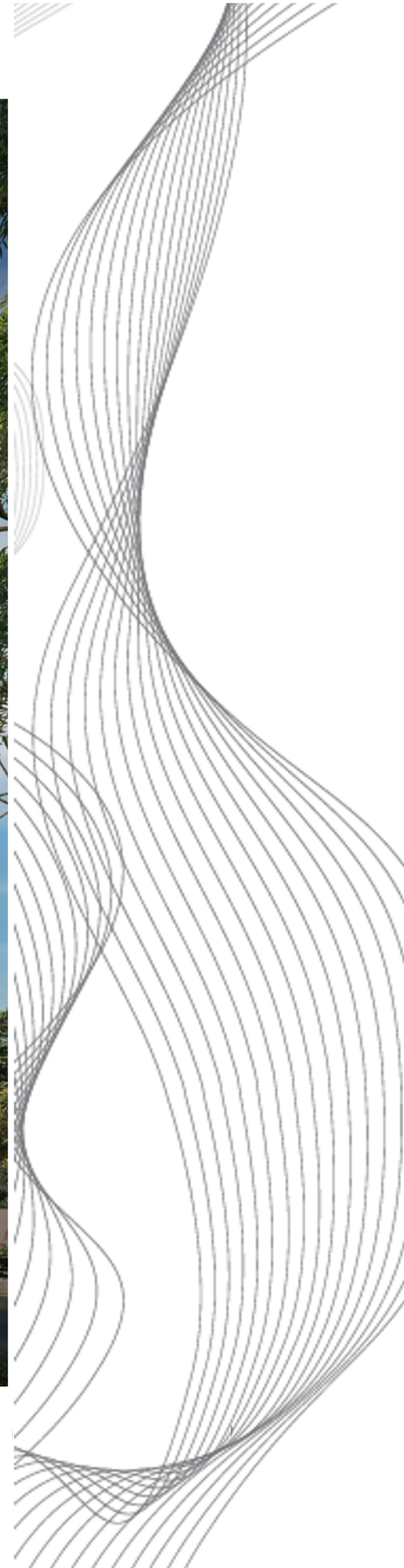
**lycka<sup>®</sup> life**

**lycka<sup>®</sup> | PROPERTIES**

**3 BHK Quality Apartments**



**LYCKA PROPERTIES PRIVATE LIMITED**



# INSPIRING FUTURE.

lycka® | PROPERTIES

Lycka Properties is a privately held real estate development company with interests in developing life-changing residential properties, creative commercial assets and happening mixed-use spaces for the better future.



## OUR MISSION

We see our mission in this world, as to transcend the pace for better built-environments.

Our projects inspire innovation, are diverse, provide well built spaces for new beginnings and achievements. We create built-environments for forward-thinking individuals and companies to shape culture, energise their self-being, and accelerate their growth.

# BASEMENT PLAN

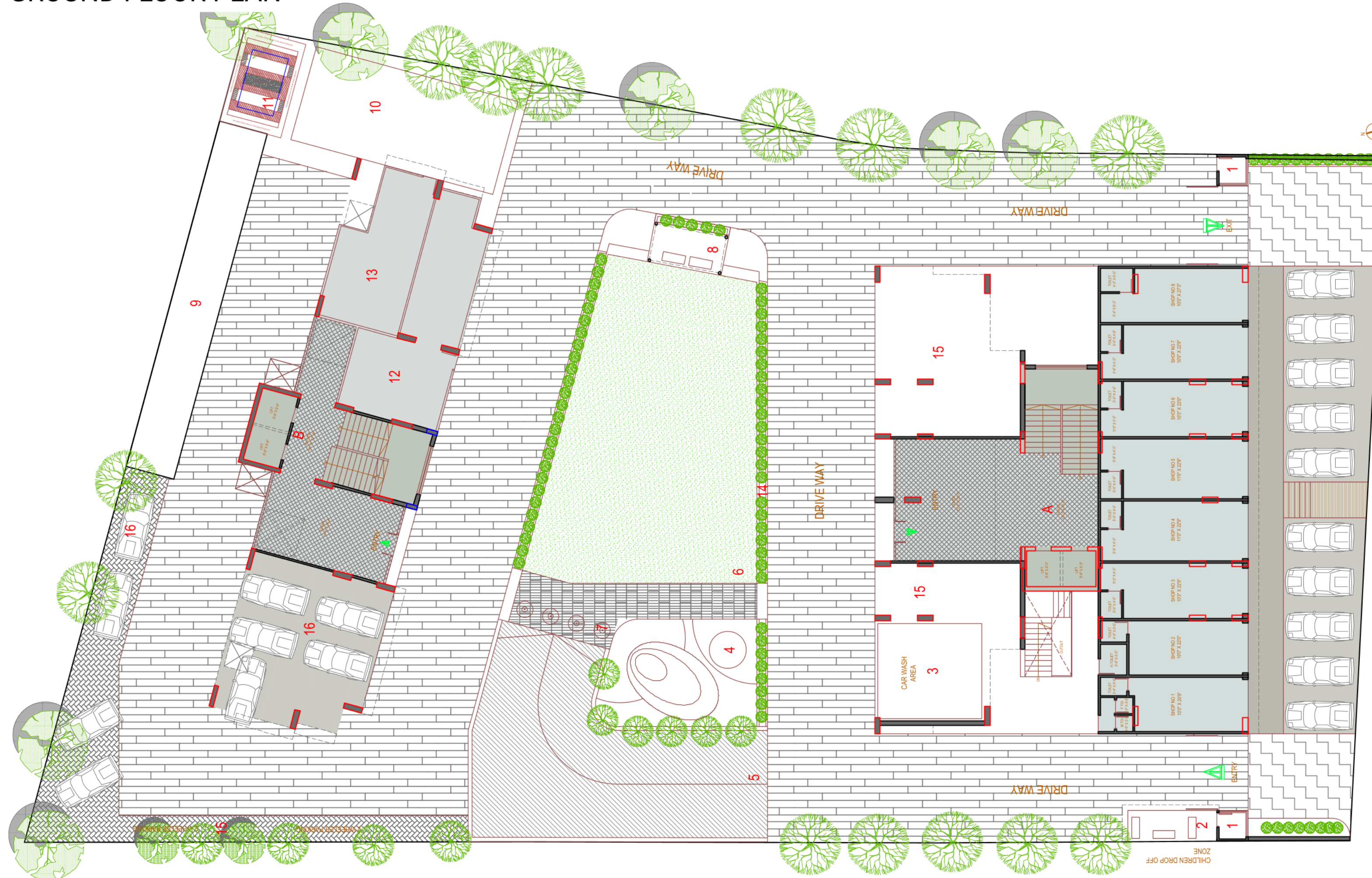


BASEMENT -1 PLAN



BASEMENT -2 PLAN

# GROUND FLOOR PLAN



## Amenities

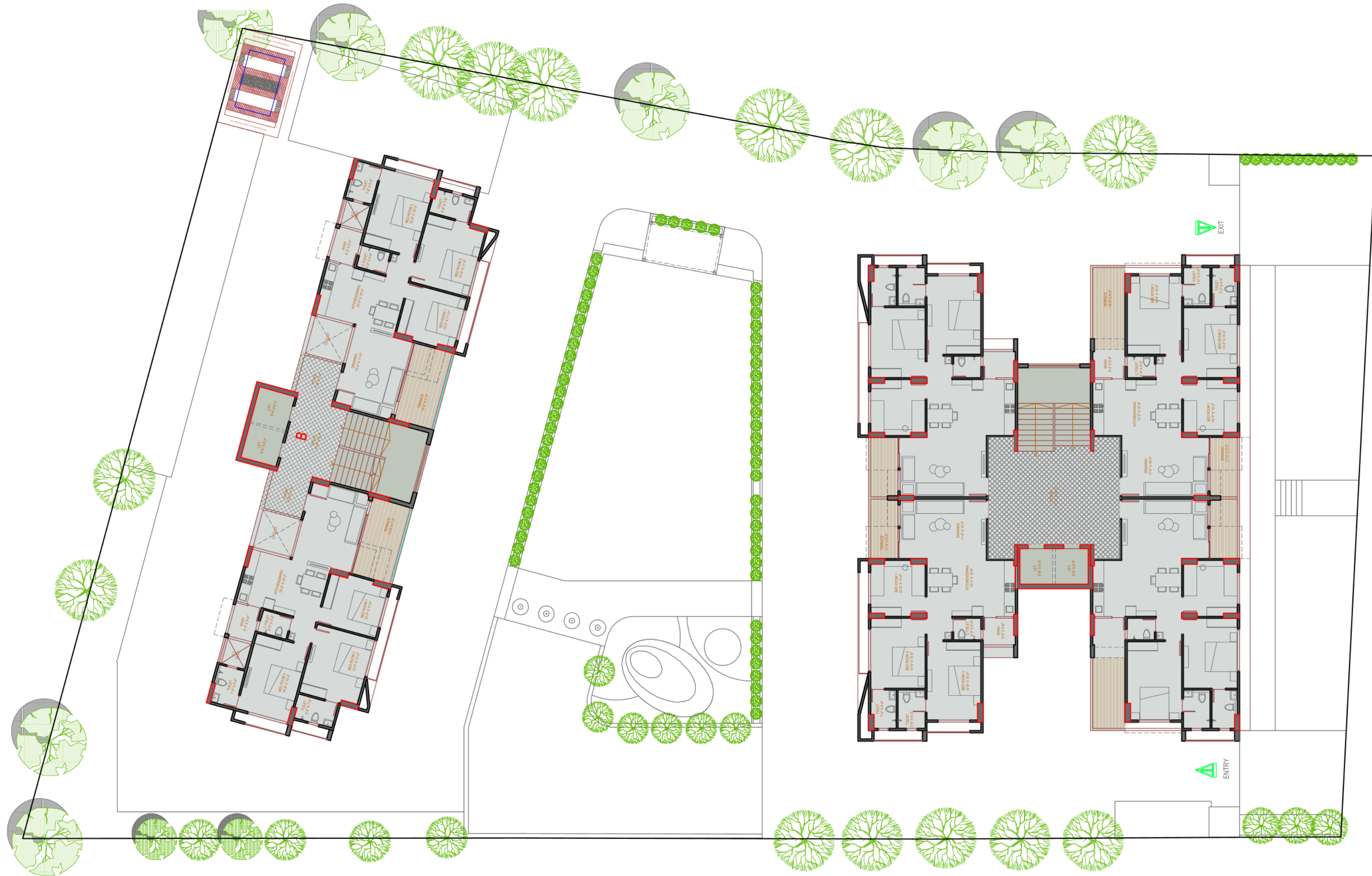
- 1. Security Cabin
- 2. School Drop-Off
- 3. Car Wash Area
- 4. Ramp
- 5. Children Play Area
- 6. Lawn Area
- 7. Surface Fountains
- 8. Senior Citizen Seating
- 9. Box Cricket
- 10. Multipurpose Court
- 11. Sub-Station
- 12. Gym
- 13. Indoor Games
- 14. Planters
- 15. Two wheeler Parking
- 16. Car Parking

SHOPS - Area Table

SHOP 1	
Room Type	Dimensions (ft. & inches)
SHOP AREA	10' 0" x 20' 9"
TOILET	3' 4" x 5' 0"
SHOP 2	
Room Type	Dimensions (ft. & inches)
SHOP AREA	10' 0" x 22' 0"
TOILET	4' 0" x 5' 0"
SHOP 3	
Room Type	Dimensions (ft. & inches)
SHOP AREA	10' 3" x 22' 9" + 5' 0" x 4' 3"
TOILET	5' 0" x 4' 0"
SHOP 4	
Room Type	Dimensions (ft. & inches)
SHOP AREA	11' 0" x 22' 9" + 5' 9" x 4' 3"
TOILET	5' 0" x 4' 0"

SHOP 5	
Room Type	Dimensions (ft. & inches)
SHOP AREA	11' 0" x 22' 9" + 5' 9" x 4' 3"
TOILET	5' 0" x 4' 0"
SHOP 6	
Room Type	Dimensions (ft. & inches)
SHOP AREA	10' 3" x 22' 0" + 5' 0" x 4' 3"
TOILET	5' 0" x 4' 0"
SHOP 7	
Room Type	Dimensions (ft. & inches)
SHOP AREA	10' 0" x 22' 9" + 4' 9" x 4' 3"
TOILET	5' 0" x 4' 0"
SHOP 8	
Room Type	Dimensions (ft. & inches)
SHOP AREA	10' 0" x 27' 3" + 5' 4" x 6' 3"
TOILET	4' 3" x 6' 0"

FIRST FLOOR PLAN



***SPACIOUS.  
AIRY.  
PRIVATE.  
OPEN.  
LUXURIOUS.***

# L1 TYPICAL FLOOR PLAN

## BLOCK A ROAD FACING

### UNIT A101 & A102



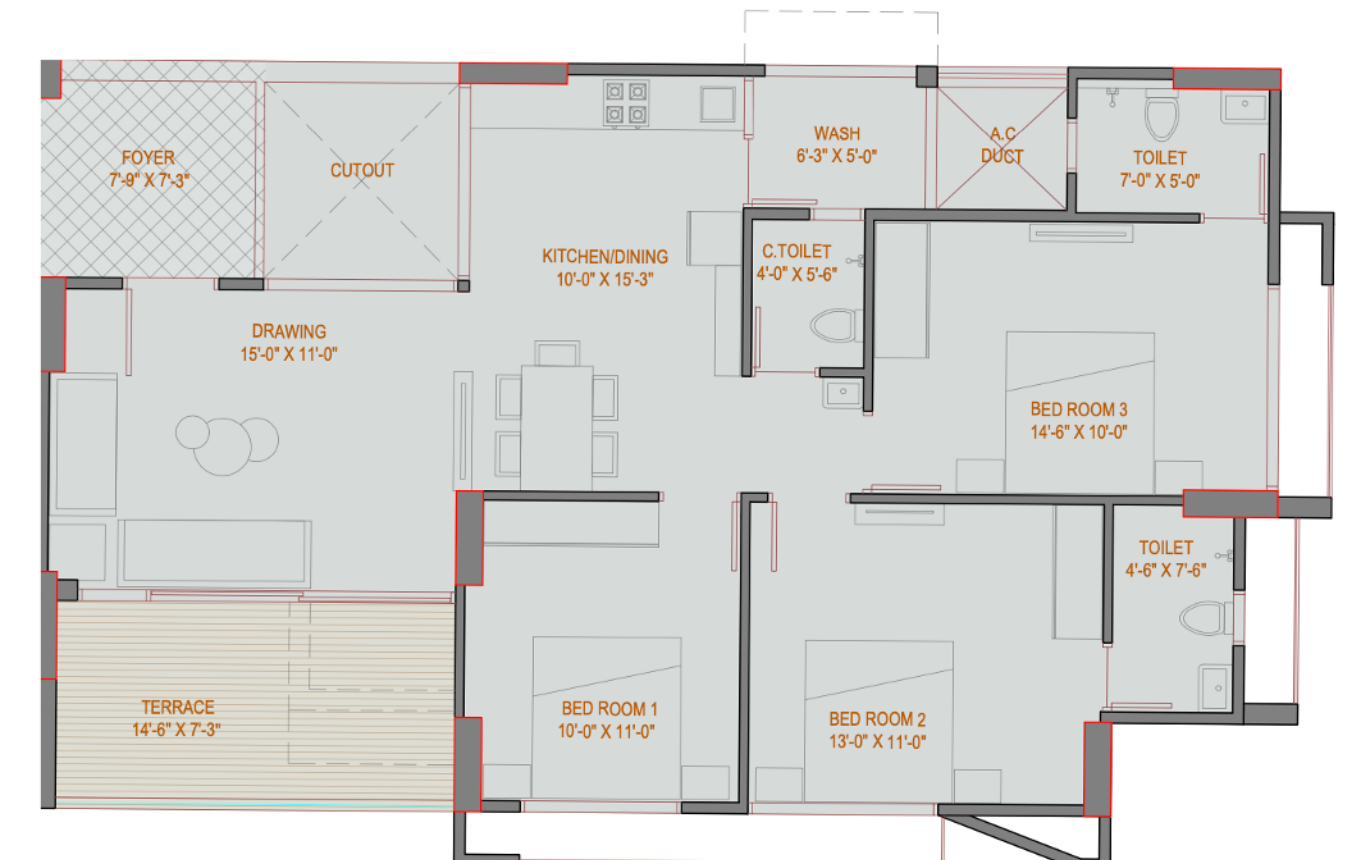
## BLOCK A GARDEN FACING

### UNIT A103 & A104

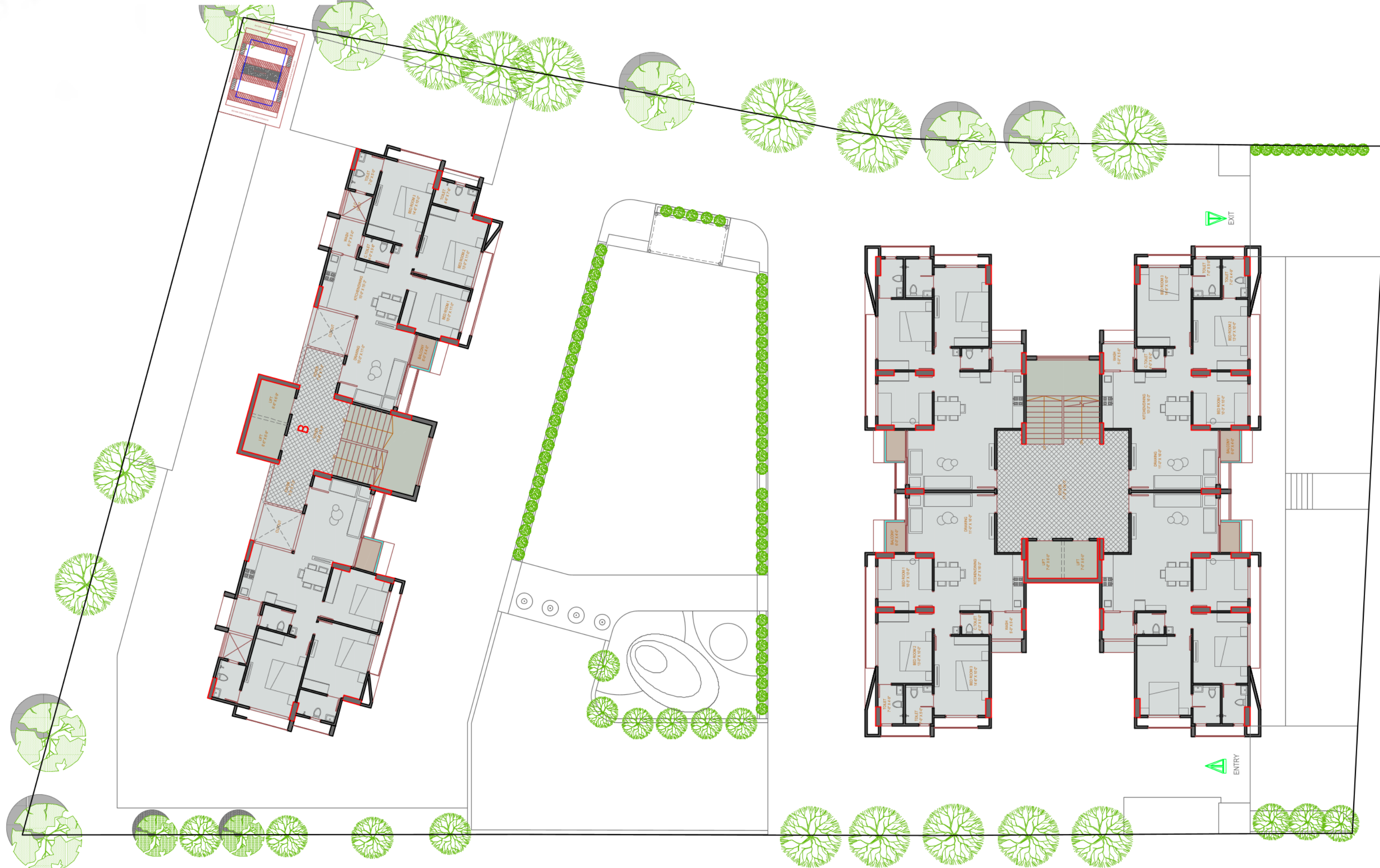


## BLOCK B GARDEN FACING

### UNIT B101 & B102



TYPICAL FLOOR PLAN L2-L14



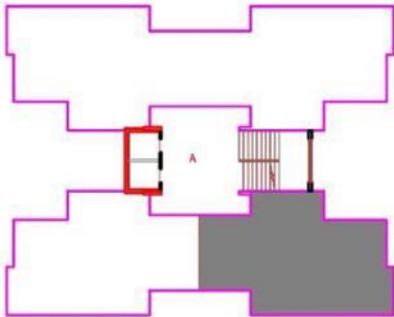
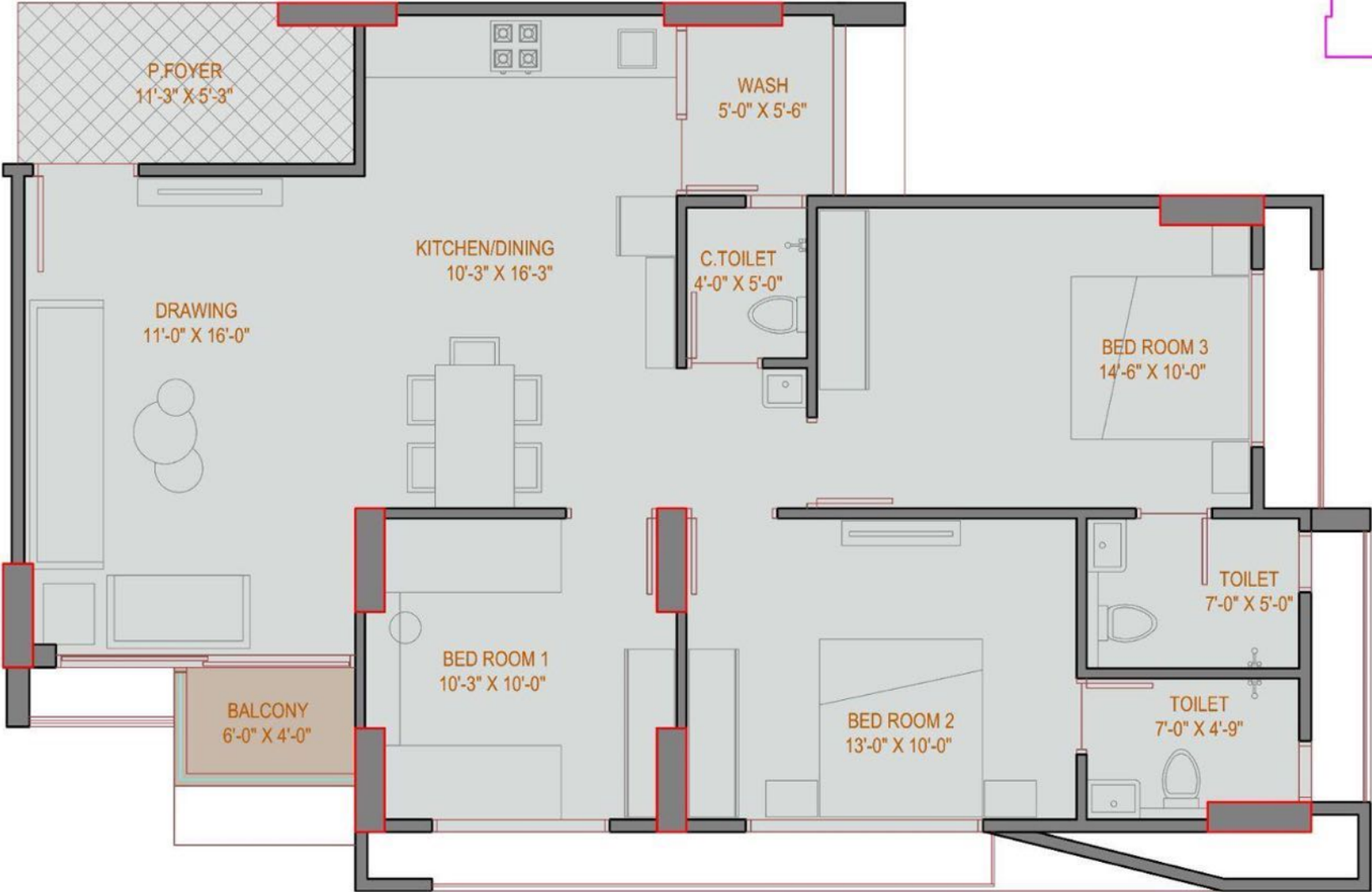
***Thoughtfully  
designed.***

***Modern  
apartments.***

that you can call your next,

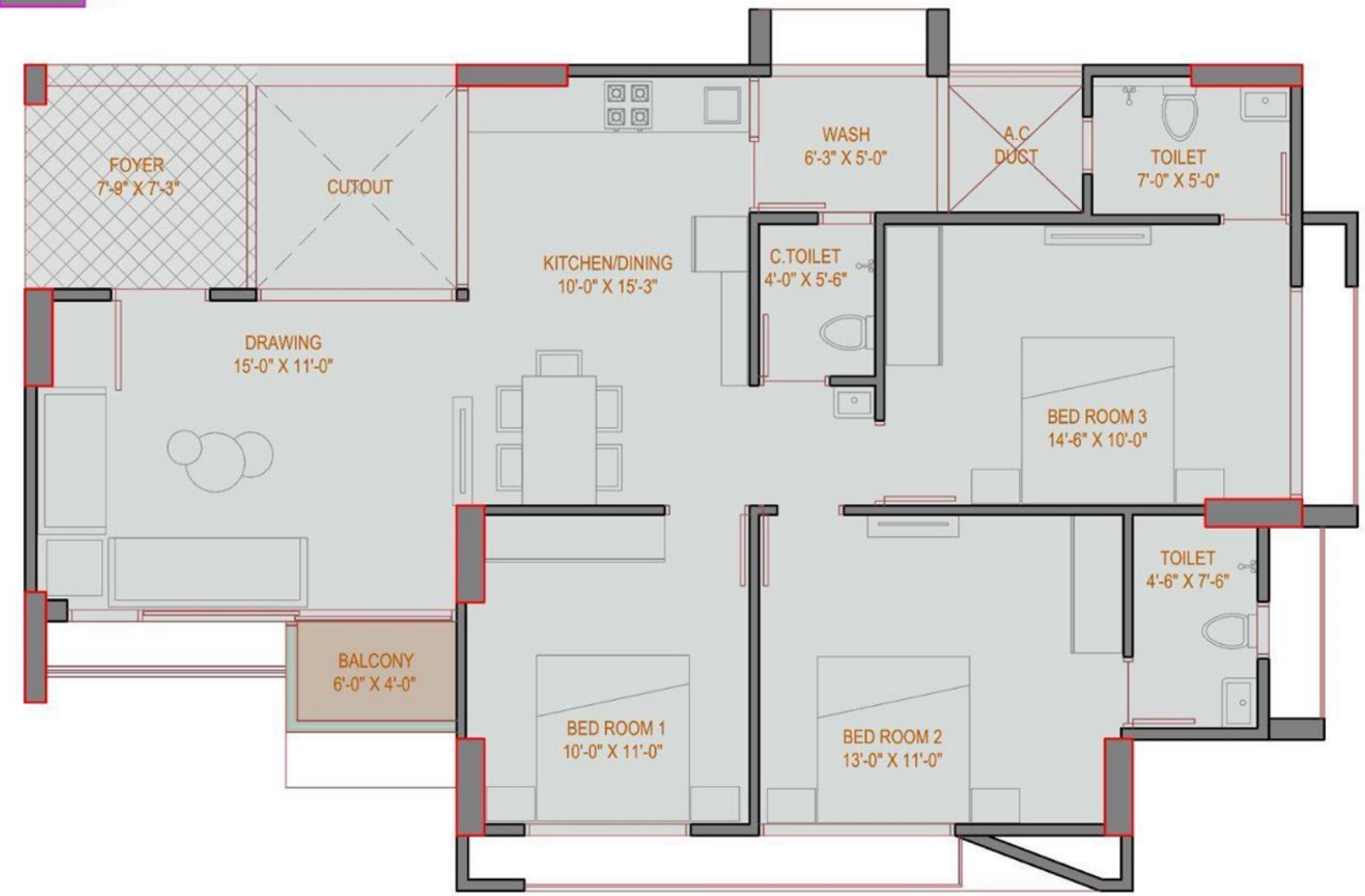
***HOME.***

# BLOCK A FLOOR PLAN L2-L14





# BLOCK B FLOOR PLAN L2-L14



## GENERAL DEVELOPMENT IMAGES



Your new **SUPERHOME!**

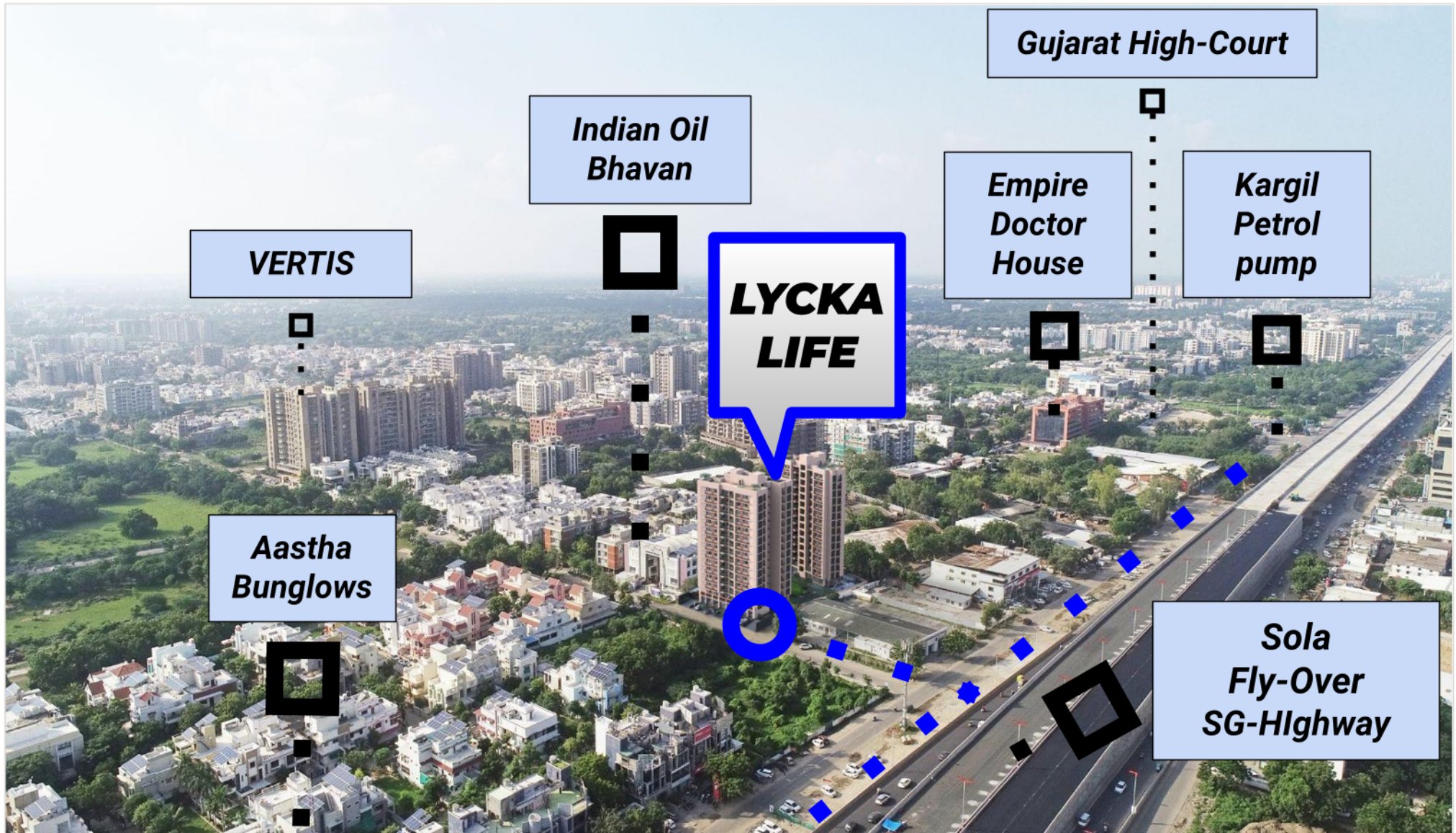
## SPECIFICATIONS

Flooring	:Vitrified Tiles in Bedrooms, Drawing & Dining Room
Window	:Sliding Aluminium Section Window
Door	:Main Door - Wooden Flush Door with One Side Polished Veneer
Internal-Doors	:Flush Doors with Oil Paint
Kitchen	:Granite Platform with dado of ceramic tiles, Stainless Steel Sink, Vitrified Tiles in Floor, Anti-skid Tiles in Wash Yard
Interior-Plaster	:Single Coat Mala
Exterior-Plaster	:Double Coat Mala
Inside-Finish	:Putty Finish
Outside-Finish	:Acrylic Paint
Elevator	:Automatic Elevators
Sanitary-Ware	:Ceramic Water Closet, Ceramic Basin
Toilet-Fittings	:Chrome Plated Fittings
Toilet-Flooring-Dado	:Designer Tiles on Walls, Anti-skid Tiles in Floor
Plumbing	:ISI Make Piping
Electrical-Switches	:ISI Modular Switches
Electric Wires	:ISI Wires
MCB-ELCB	:ISI Make

Developer

**lycka.** | PROPERTIES

# KEY PLAN - DRONE VIEW - A LOCATION LIKE NO OTHER.



## DISCLAIMER:

- The brochure is for the easy presentation of the Project. It should not be considered as a part of the legal documents. For further information regarding the Project, the Member / customer is requested to check the details on RERA website or at the Developer's office before going ahead with the booking.
- The furniture and fixtures, electrical appliances and other loose items shown in the brochure are only for illustrative purposes and do not form a part of the standard product on sale. The furniture layout shown in the brochure is only suggestive and subject to change as per site conditions and as per the instructions of the Project Architect.
- Developer reserves the right to make any changes in design, plans, specifications, amenities, elevation etc. without any prior notice. Such changes would be binding on all the buyers / members.
- Color and design / pattern of tiles and fixtures may change subject to availability.
- The Promoter / Developer reserves the right to make minor on-site changes during the course of construction and such changes shall be binding on all the members / customers of the Project.
- The dimensions shown in the brochure are approximate and calculated from unfinished surfaces and are rounded off to nearest whole number. The carpet area mentioned is calculated as per the provisions of the RERA Act with the help of Autocad software.
- The images (interior and exterior views) in the brochure are computer simulated graphics for representational purpose and are subject to errors and omissions. The images used may be stock images or images based on the architectural plans of the Project. They shall not be construed as actual depictions of the Project.
- The north direction shown in the brochure is approximate and can be erroneous. The Member / Customer is expected to verify the same personally before going ahead with the booking.
- The Key Plan in the Brochure is not to scale and does not depict the exact location of the Project or the connecting road network or other abutting structures or landmarks. It is only for representation purpose and gives a rough idea about the approximate location of the Project. The Member / Customer is requested to visit the Project site and check the physical location of the Project and its surroundings before going ahead with the booking.

**LYCKA LIFE, SG Road, Near Sola Flyover, Besides  
Indian Oil Bhavan, Sola, Ahmedabad, 380060**

RERA Reg. No.: PR/GJ/AHMEDABAD/AHMEDABAD CITY/AUDA/MAA09961/230322  
[www.gujrera.gujarat.gov.in](http://www.gujrera.gujarat.gov.in)

