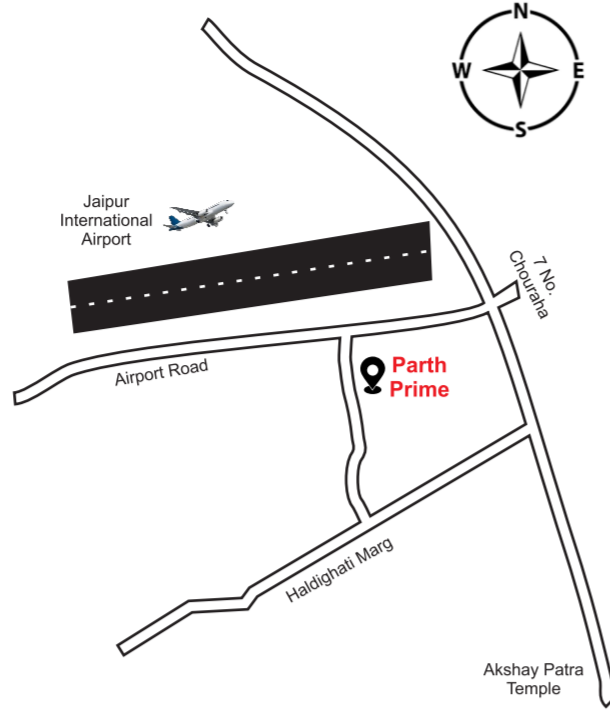


AMENITIES

- RERA & JDA Approved Property
- 90% Loanable with all Banks
- Premium Bathroom and Kitchen Fittings
- 24x7 Power Backup for Common Area
- Automatic Lift
- 24x7 Water Supply
- Big Size Balcony
- Modular Kitchen
- Branded Electrical Accessories & Switches
- Big Parking Space
- POP Coated Painted Walls with Wallpapers
- Wooden Wardrobes
- A/C Fitting Point in every Room and Hall
- 3 Side Road (60ft, 40ft, 30ft)
- EV Charging Point



Main Attractions of the Project



Society Temple



Theater Room



3 Tier Security



Yoga Deck



Gym



Indoor Games



Rooftop Garden



Society Office

Parth Prime, Panchwati Colony,
Near Airport, Jagatpura, Jaipur-302017

Developed By : PARTH SARTHI GROUP



RERA NO. RAJ/P/2023/2650
RAJ/P/2023/2730



Parth Prime

2, 3 & 4 BHK LUXURY APARTMENTS

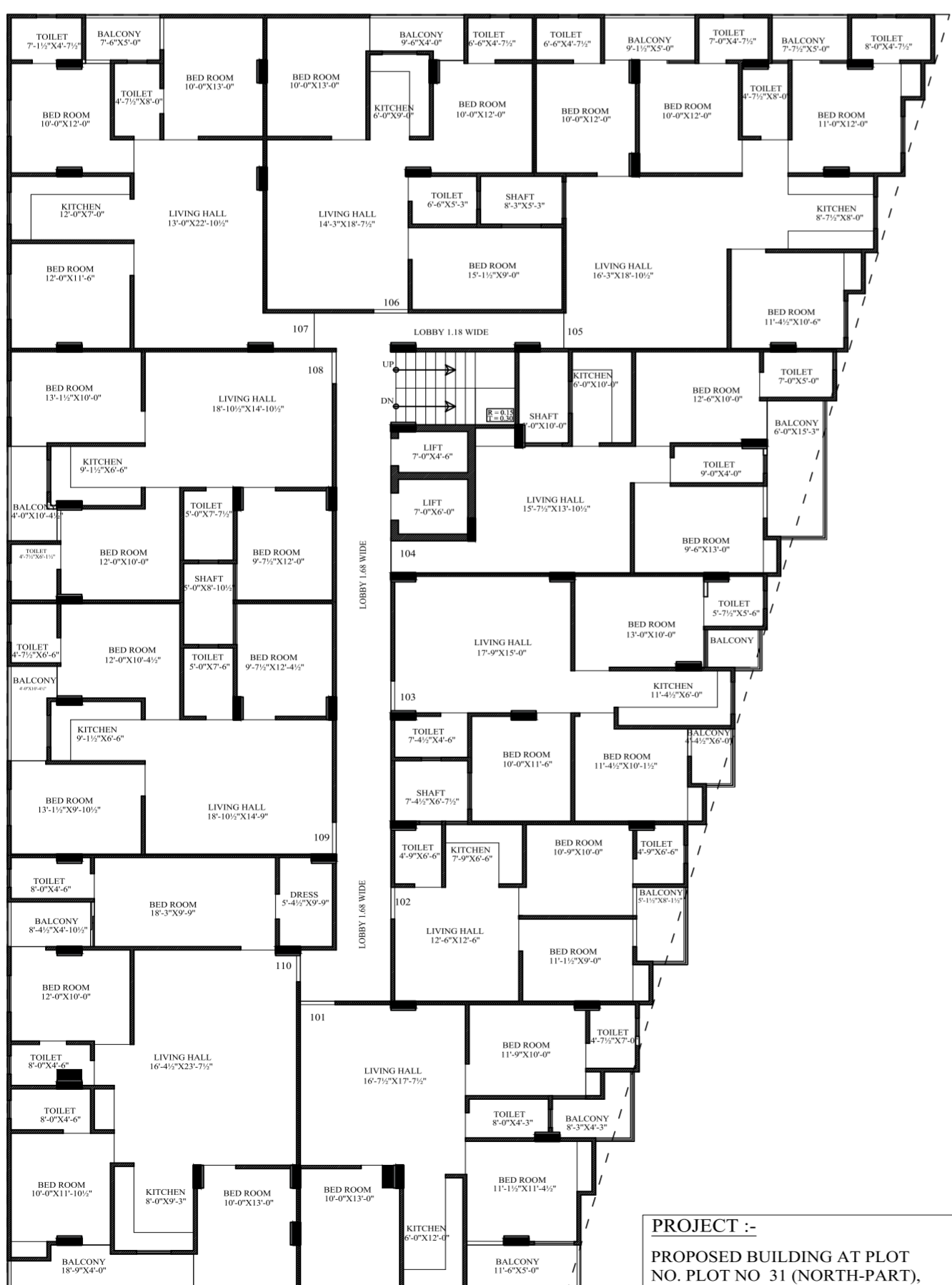


Airport View
Unmatched Luxury



Parth Prime, Panchwati Colony,
Near Airport, Jagatpura, Jaipur-302017

A-BLOCK

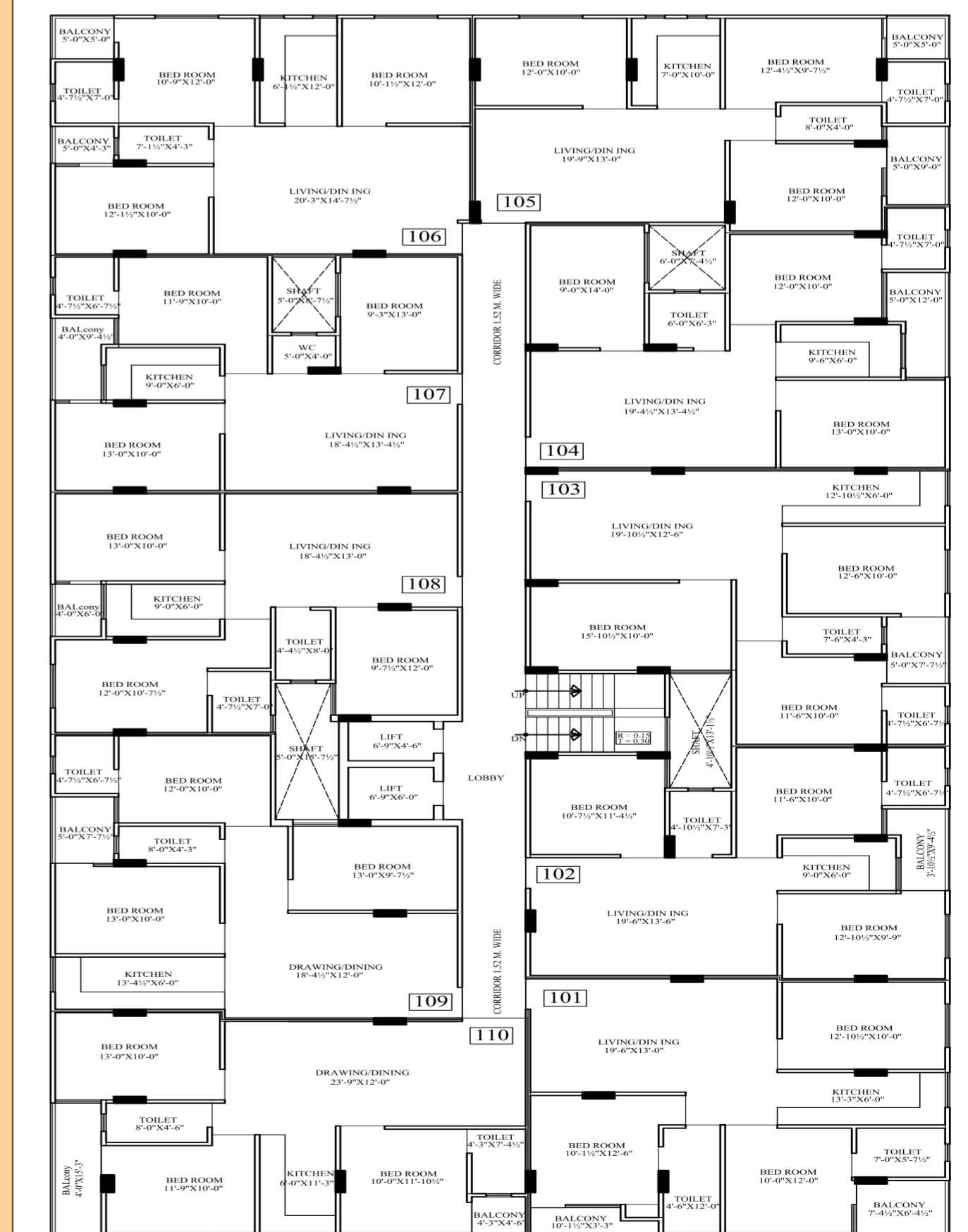


PROJECT :-
PROPOSED BUILDING AT PLOT NO. 31 (NORTH-PART),
32, 33, 34 & 35 (NORTH-PART),
PANCHVATI COLONY, JAIPUR

GROUND FLOOR AREA PLAN

AREA IN SQ.FT	FLAT NO.	101 3BHK	102 2BHK	103 3BHK	104 2BHK	105 4BHK	106 3BHK	107 3BHK	108 3BHK	109 3BHK	110 4BHK
SALE AREA	=	1388.74	= 807.95	= 1277.90	= 1124.78	= 1769.93	= 1243.78	= 1365.60	= 1253.42	= 1255.11	= 2016.60
BUILTUP AREA	=	991.96	= 577.11	= 912.79	= 803.42	= 1264.24	= 888.42	= 975.43	= 895.30	= 896.51	= 1440.43
CARPET AREA	=	849.71	= 504.81	= 821.88	= 681.64	= 1138.49	= 809.84	= 900.43	= 808.94	= 816.53	= 1276.59
BALCONY AREA	=	103.18	= 42.95	= 50.96	= 91.24	= 83.74	= 41.23	= 37.50	= 45.00	= 45.00	= 118.53

B-BLOCK



PROJECT :-

PROPOSED BUILDING AT PLOT NO. 29,
30, 31 (South-Part), 35 (South-Part) 36 & 37,
PANCHVATI COLONY, JAIPUR

GROUND FLOOR AREA PLAN

AREA IN SQ.FT	FLAT NO.	101 3BHK	102 3BHK	103 3BHK	104 3BHK	105 3BHK	106 3BHK	107 3BHK	108 3BHK	109 3BHK	110 3BHK
SALE AREA	=	1379.30	= 1205.24	= 1300.65	= 1251.27	= 1268.00	= 1280.13	= 1173.24	= 1204.14	= 1267.81	= 1329.63
BUILTUP AREA	=	985.22	= 860.89	= 925.04	= 893.77	= 905.72	= 914.38	= 838.03	= 860.10	= 905.58	= 949.74
CARPET AREA	=	875.57	= 782.29	= 851.48	= 800.46	= 799.16	= 832.72	= 754.62	= 793.44	= 822.08	= 835.94
BALCONY AREA	=	75.4	= 39.70	= 38.12	= 50.43	= 70.00	= 46.25	= 40.50	= 24.00	= 38.12	= 80.12