



3BHK EXCLUSIVE RESIDENCY



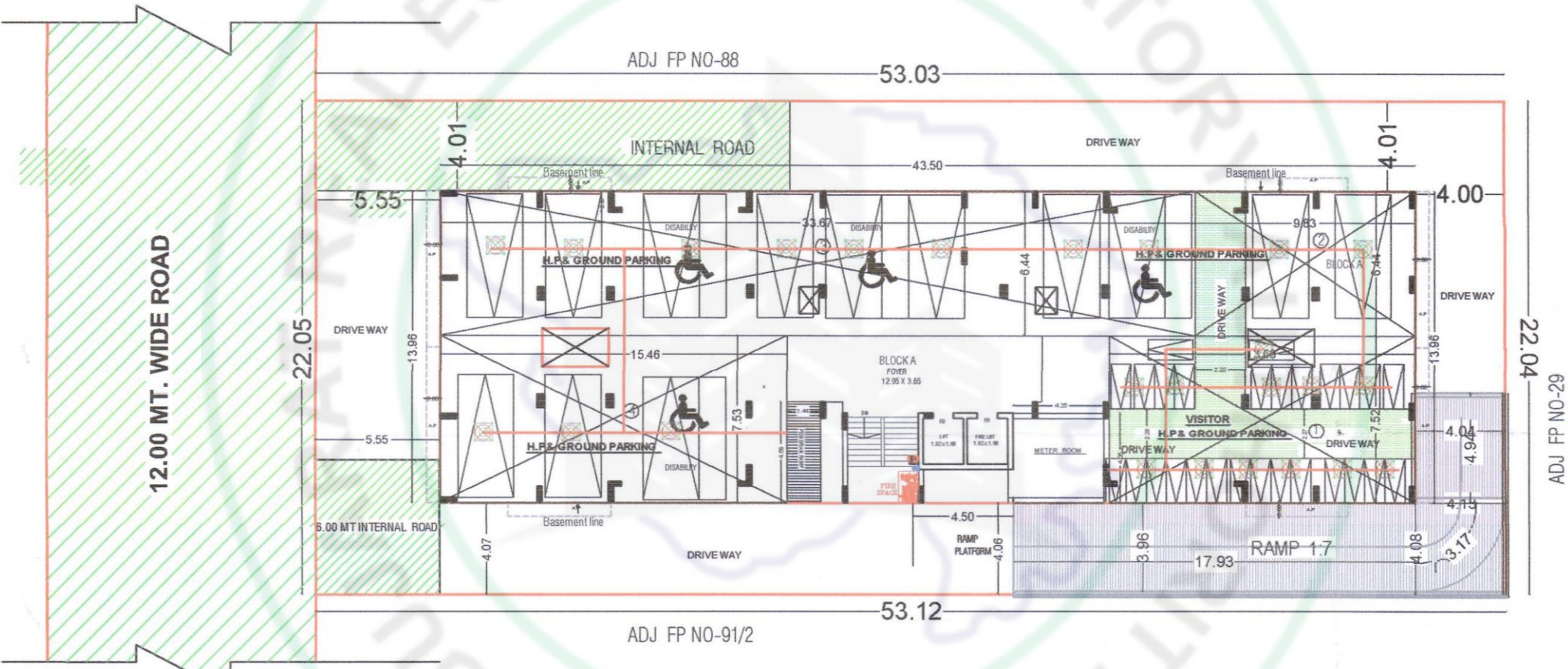
Mango Oasis is a place where everyone feels at peace and on the path of progress. It simply add to your prestige on the society and yes, all your worries and stress are gone



Exclusive / Amenities

- Attractive entrance gate with security cabin.
- 24 hours water supply with pressure system from bore well and GMC.
- Two Standard lift
- well planed allotted ground & basement parking
- RCC Roads with street lights
- Earthquake resistant structure design
- Near by two metro station PDPU & RAYSAN
- Situated Education zone

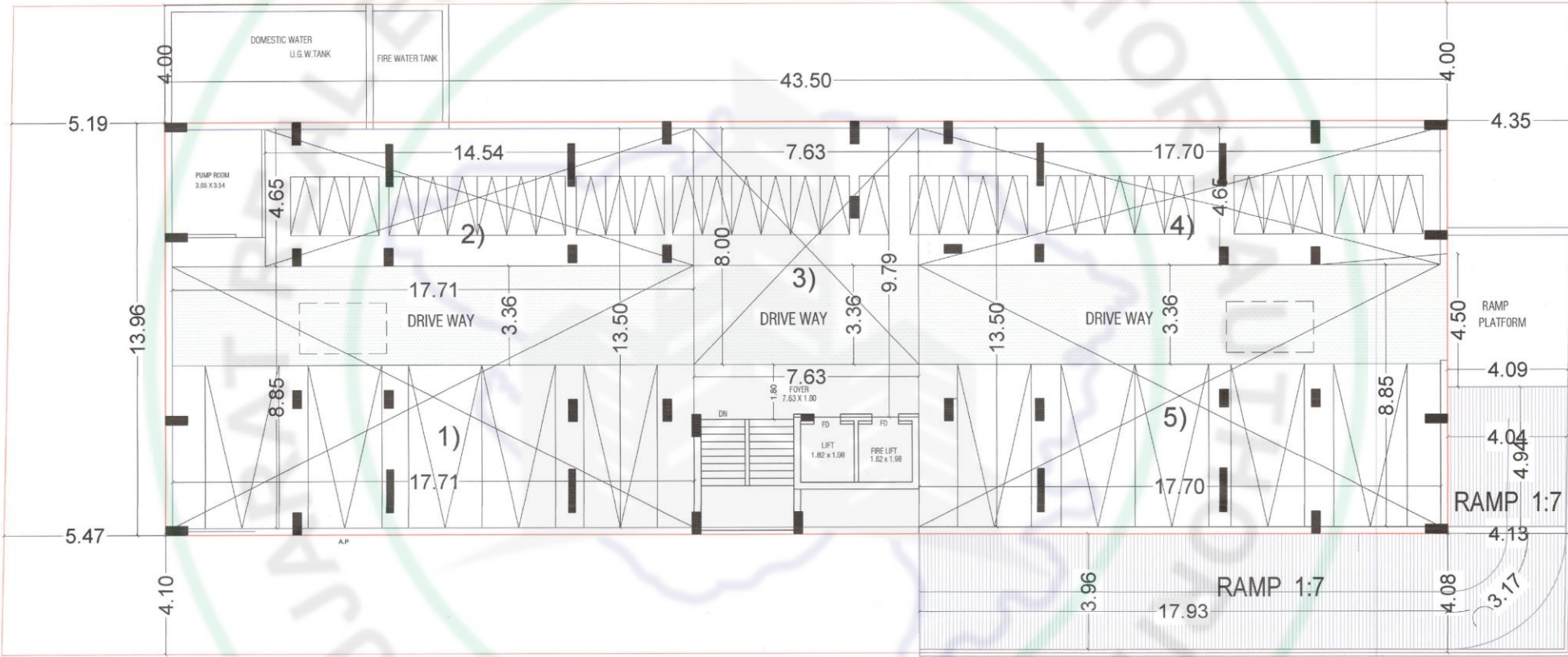




GROUND FLOOR

ESTATE REGULATORY AUTHORITY GUJ RERA

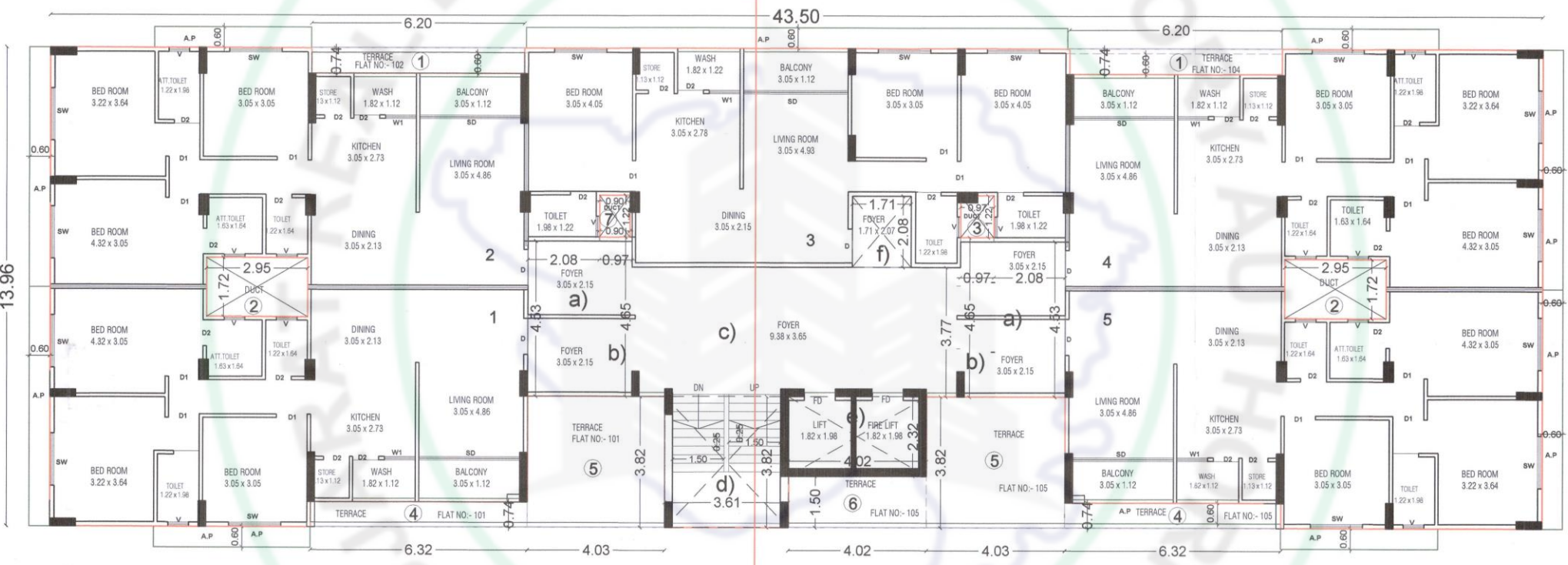
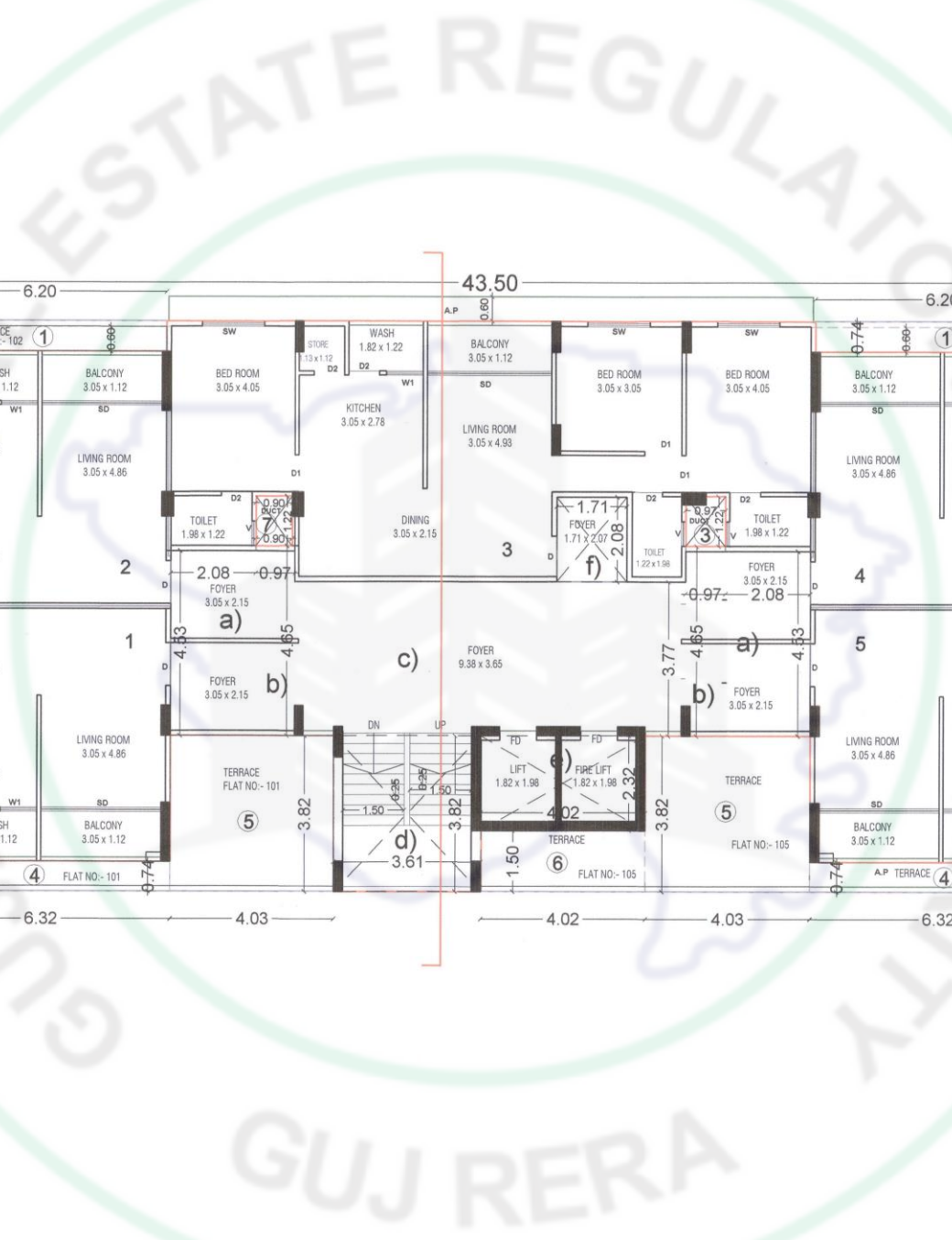
12.00 MT. WIDE ROAD



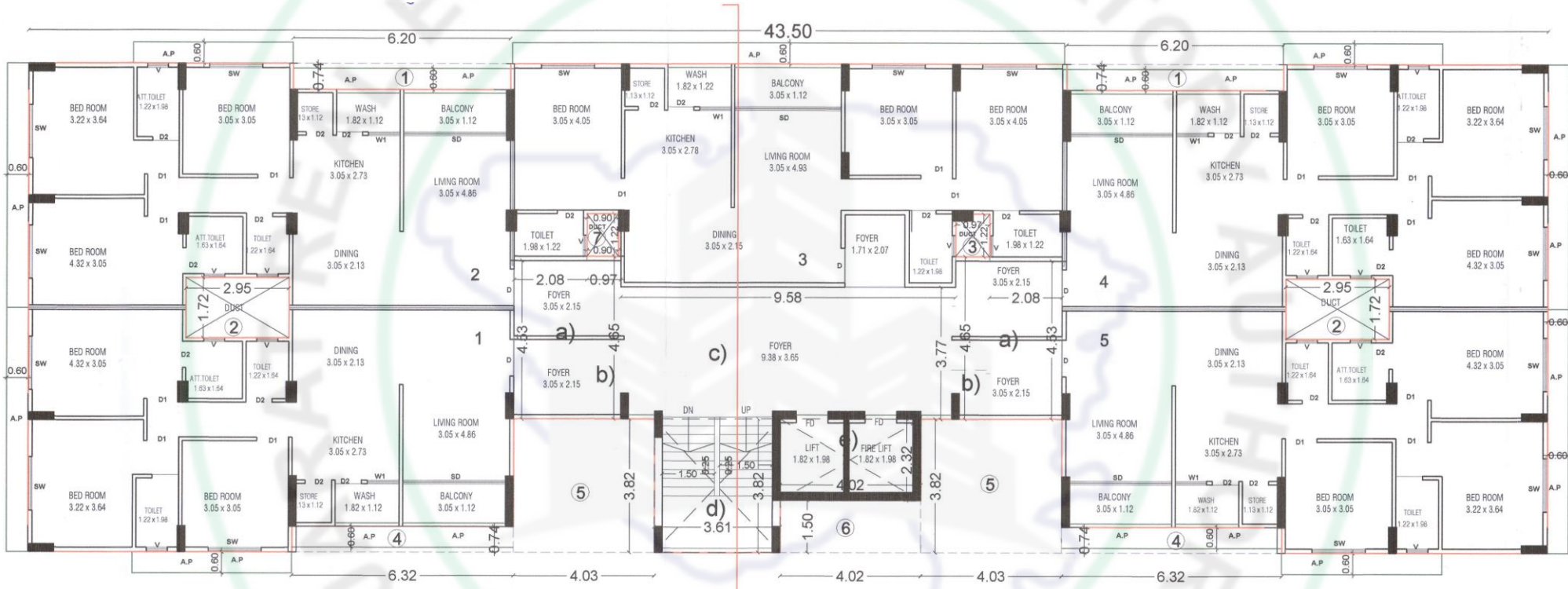
BASEMENT PLAN

GUJ RERA

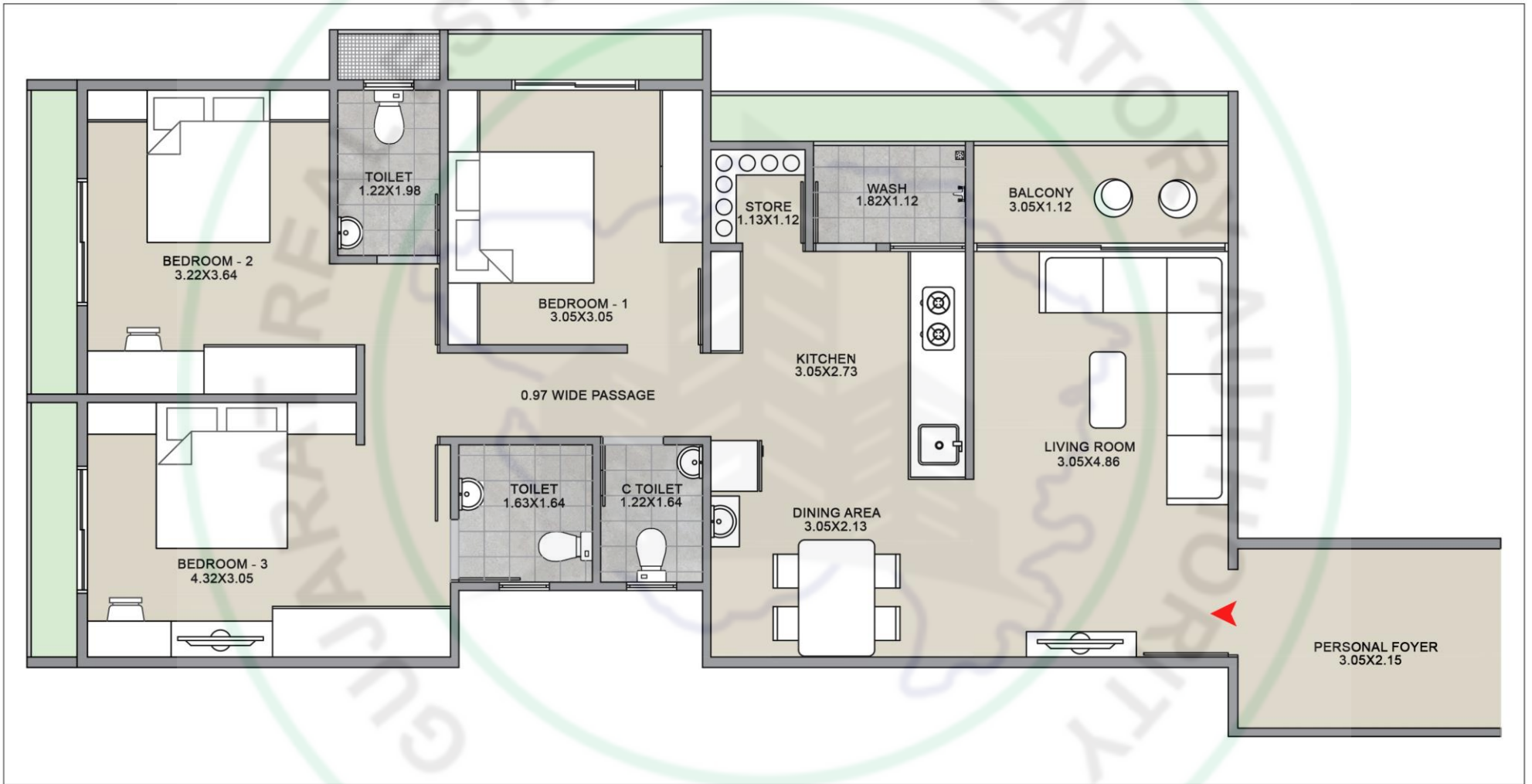




FIRST FLOOR PLAN

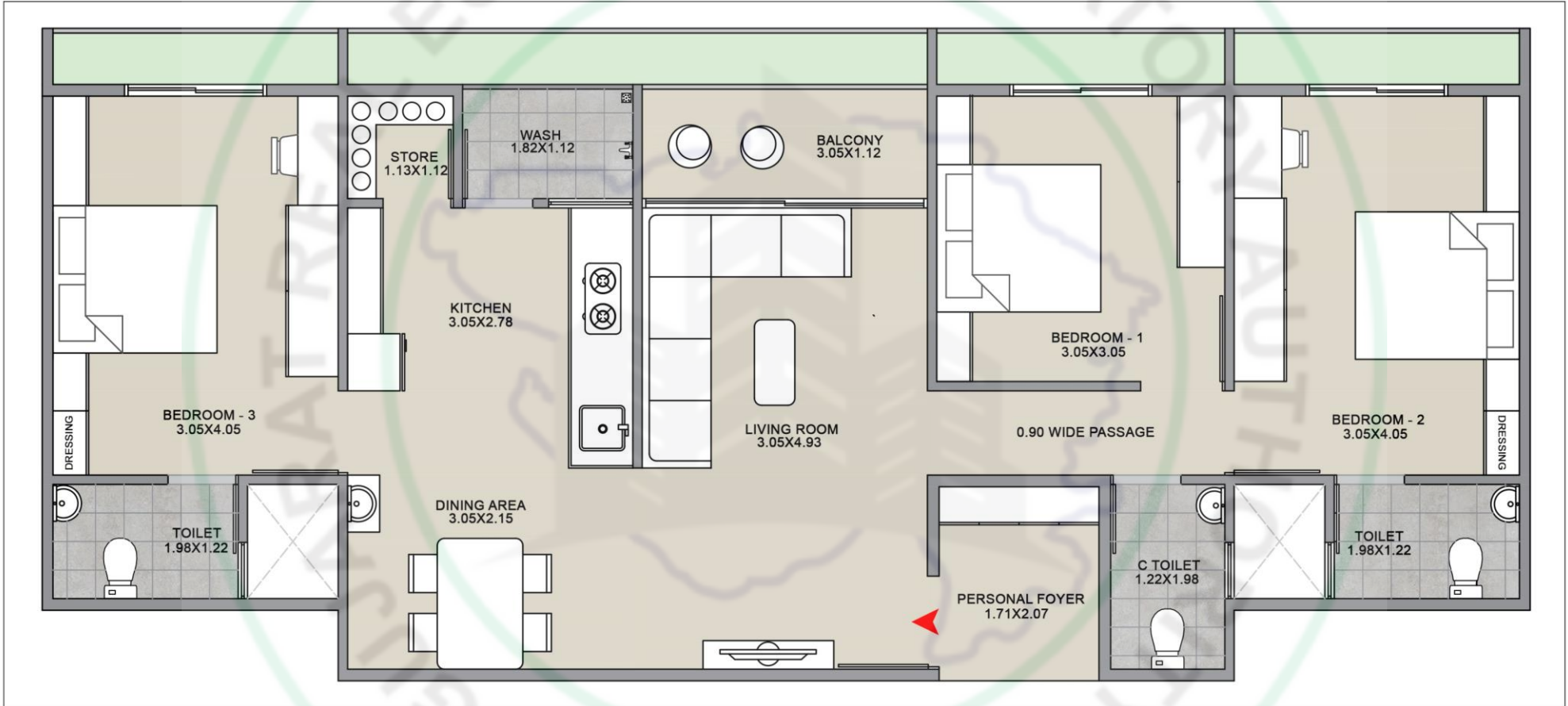


TYPICAL FLOOR PLAN
(2ND FL,3RD FL,4TH FL,5TH FL,6TH FL,7TH



3BHK TYPE - A





3BHK TYPE - B



Specification

Earthquake resistance RCC Frame structure as per IS code

Wall Finish

Internal single coat mala plaster with putty finish. External double coat sand face plaster with good quality acrylic paint

FLOORING

Premium quality vitrified tiles in all rooms

KITCHEN

Granite platform with s.s. sink colored glazed tiles dedo up to lintel level

TOILET & PLUMBING

Colored glazed tiles up to lintel level. plumbing with good quality pipe, ISI fitting & branded sanitary ware.

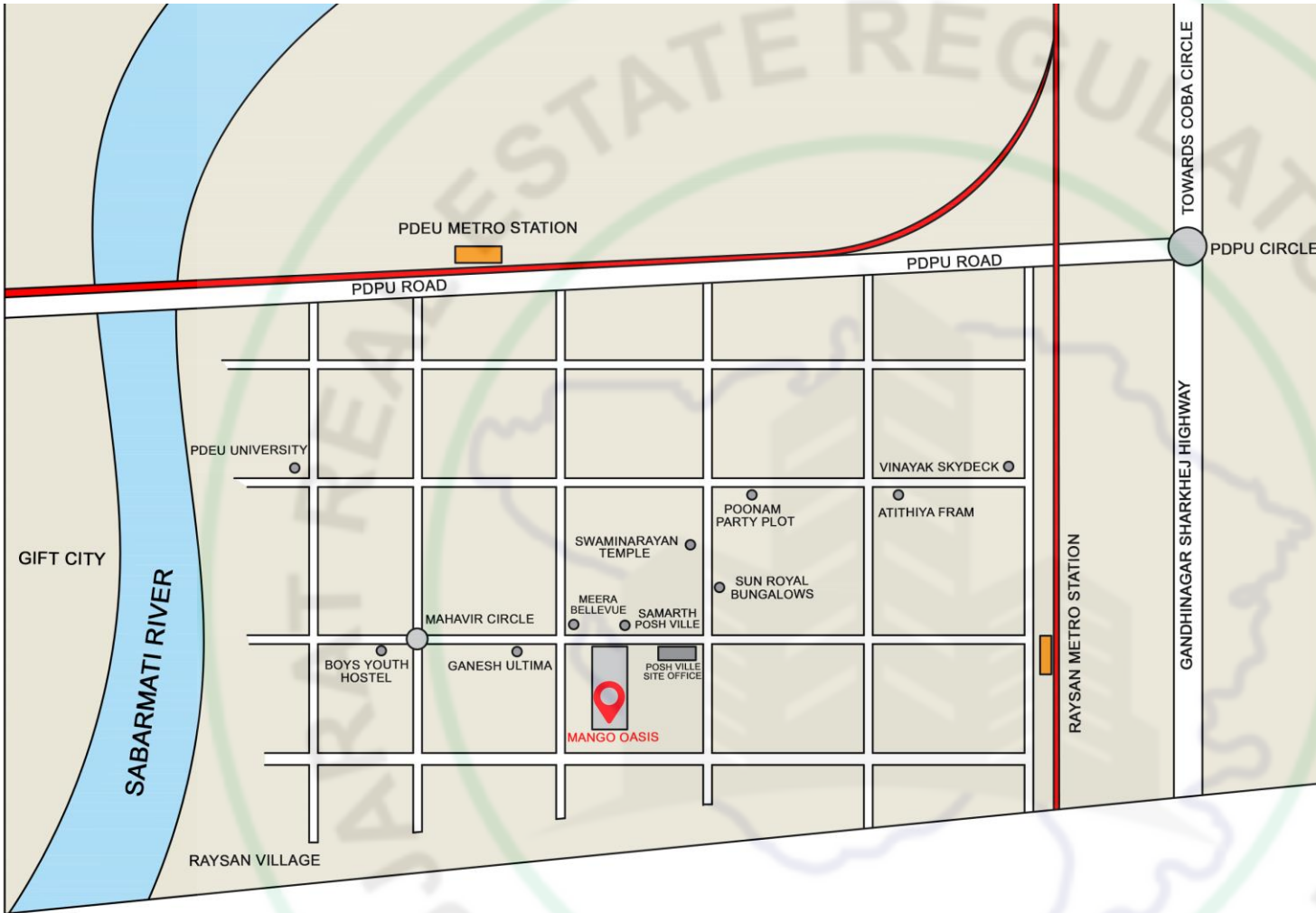
DOORS & WINDOWS

Decorative main door with wooden/marble frame. all other doors are flush door with good quality fitting, powder coated aluminum sliding window with marble stone seal. all doors with marble frame

ELECTRIFICATION

3 phase power concealed copper wiring with modular switches with sufficient number of point.





Structure engineer
Parvati techno consultant

OPP. Samarth Posh Ville bungalow's, PDPU
Road Raysan Gandhinagar