

bakeri.com



**bakeri**  
since 1959

Environment™  
is our Attitude

# SHAUNAK @ bakeri city

1-2 BHK APARTMENTS

Close to Prahladnagar



Artist's Image



## Amenities:

- Multi Purpose Hall / Indoor Games
- Gymnasium
- Children's Play Area
- Senior Citizen's Sit Outs
- School Bus Pick up & Drop Area
- Green Spaces
- 24x7 Security
- Wheel Chair Friendly Access
- Common Parking Spaces at Basement and at Ground Level
- Adani PNG Connection
- Common Terrace
- Automatic Elevators
- Stone/Paved Roads
- Society Office
- 24x7 Water Supply

## Specifications:

### FLOORING

- Vitrified Tiles in living room

### TOILETS

- Dado up to lintel level
- Good quality sanitary and C.P fittings

### KITCHEN

- Granite platform with S.S. Sink and dado of glazed tiles up to lintel level

### WALL FINISHES

- Exterior walls having double coated plaster with acrylic paint
- Interior walls having putty finish in all rooms

### DOORS-WINDOWS

- Main door with wooden frame and decorative shutter
- All other doors with stone frames and flush doors
- Powder coated aluminium windows with full glass

### ELECTRIFICATION

- Single phase concealed copper wiring with necessary points

### OTHERS

- Extra brick- bat concrete in addition to usual thickness of slab, totalling 7" thick for better thermal insulation of top floor apartments to reduce the heat of summer months
- China mosaic flooring and water proofing on terraces



**bakeri**  
since 1959

Environment™  
is our Attitude



**SHAUNAK**

1-2 BHK APARTMENTS



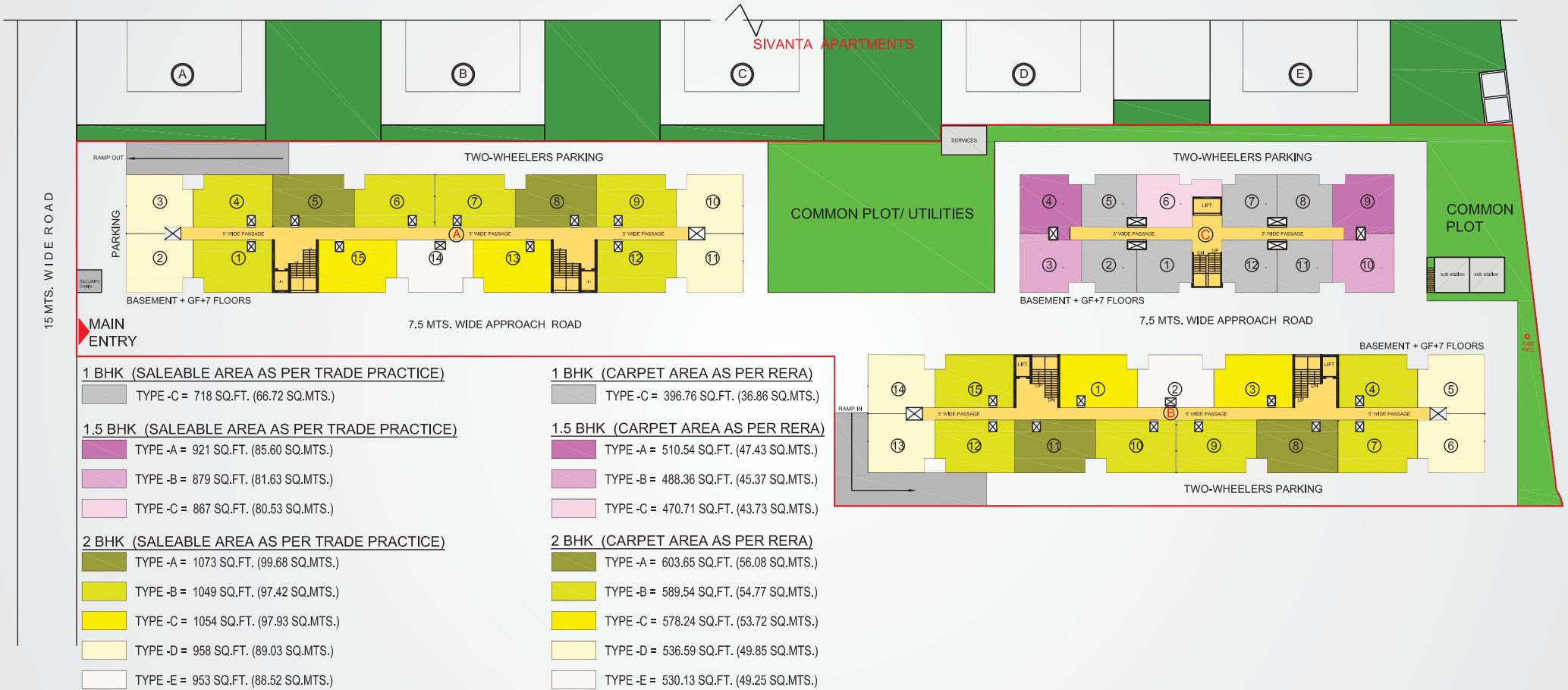
**SITE GROUND FLOOR PLAN**

All Plans / Areas / Dimensions are Approximate, Average and Unfinished.



**bakery**  
since 1959

Environment™  
is our Attitude







**bakeri**  
since 1959

Environment™  
is our Attitude

**2 BHK - TYPE - A:**  
S.A. = 1073 SQ. FT. (99.68 SQ. MTS.)  
C.A. = 603.65 SQ. FT. (56.08 SQ. MTS.)



**2 BHK - TYPE - D:**  
S.A. = 958 SQ. FT. (89.03 SQ. MTS.)  
C.A. = 536.59 SQ. FT. (49.85 SQ. MTS.)

**2 BHK - TYPE - B:**  
S.A. = 1049 SQ. FT. (97.42 SQ. MTS.)  
C.A. = 589.54 SQ. FT. (54.77 SQ. MTS.)

**2 BHK - TYPE - C:**  
S.A. = 1054 SQ. FT. (97.93 SQ. MTS.)  
C.A. = 578.24 SQ. FT. (53.72 SQ. MTS.)

**2 BHK - TYPE - E:**  
S.A. = 953 SQ. FT. (88.52 SQ. MTS.)  
C.A. = 530.13 SQ. FT. (49.25 SQ. MTS.)

**SHAUNAK**  
1-2 BHK APARTMENTS

S.A. = SALEABLE AREA AS PER TRADE PRACTICE  
C.A. = CARPET AREA AS PER RERA



**BLOCK A - TYPICAL FLOOR PLAN**

All Plans / Areas / Dimensions are Approximate, Average and Unfinished.

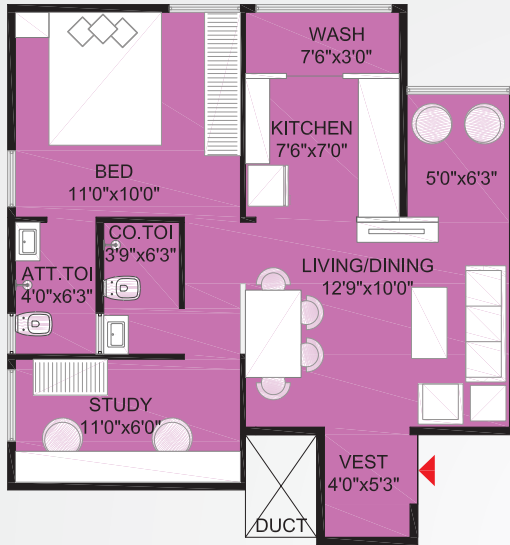


**bakeri**  
since 1959

Environment™  
is our Attitude

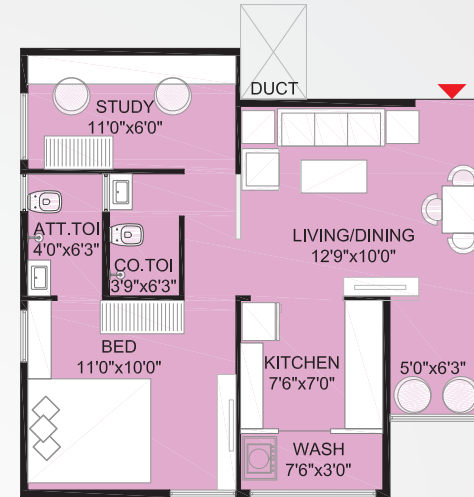
### TYPE A 1.5 BHK

S.A. = 921 SQ.FT. (85.60 SQ.MTS.)  
C.A. = 510.54 SQ.FT. (47.43 SQ.MTS.)



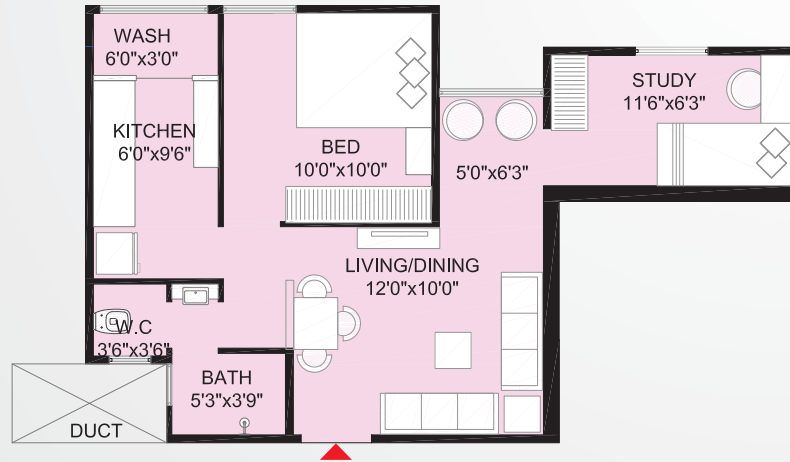
### TYPE B 1.5 BHK

S.A. = 879 SQ.FT. (81.63 SQ.MTS.)  
C.A. = 488.36 SQ.FT. (45.37 SQ.MTS.)



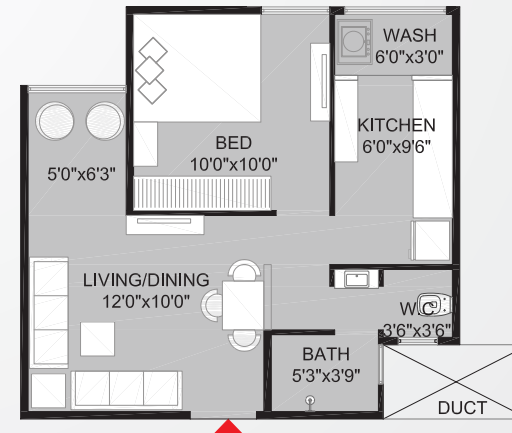
### TYPE C 1.5 BHK

S.A. = 867 SQ.FT. (80.53 SQ.MTS.)  
C.A. = 470.71 SQ.FT. (43.73 SQ.MTS.)



### TYPE C 1 BHK

S.A. = 718 SQ.FT. (66.72 SQ.MTS.)  
C.A. = 396.76 SQ.FT. (36.86 SQ.MTS.)





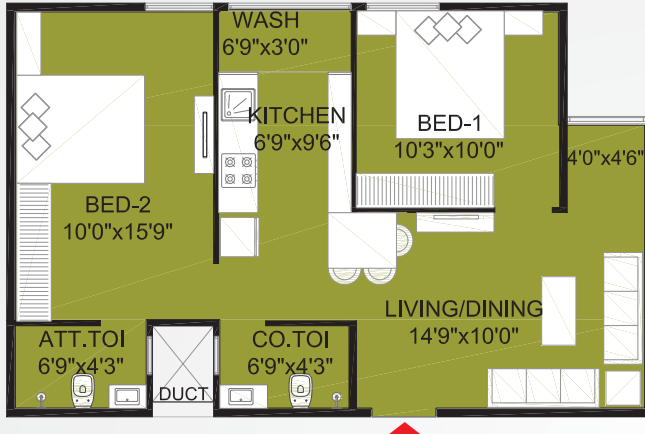


**bakeri**  
since 1959

Environment™  
is our Attitude

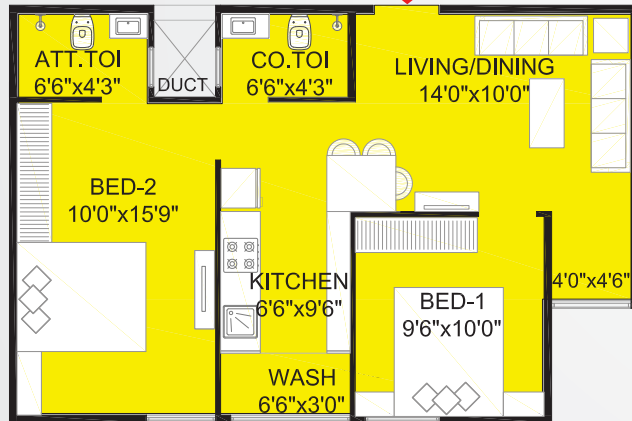
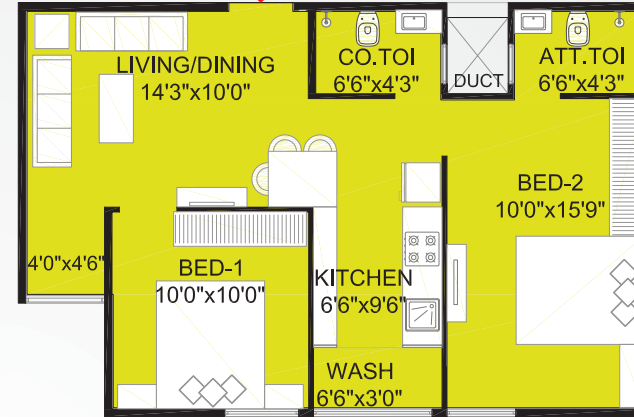
**TYPE A 2 BHK**

S.A. = 1073 SQ.FT. (99.68 SQ.MTS.)  
C.A. = 603.65 SQ.FT. (56.08 SQ.MTS.)



**TYPE B 2 BHK**

S.A. = 1049 SQ.FT. (97.42 SQ.MTS.)  
C.A. = 589.54 SQ.FT. (54.77 SQ.MTS.)



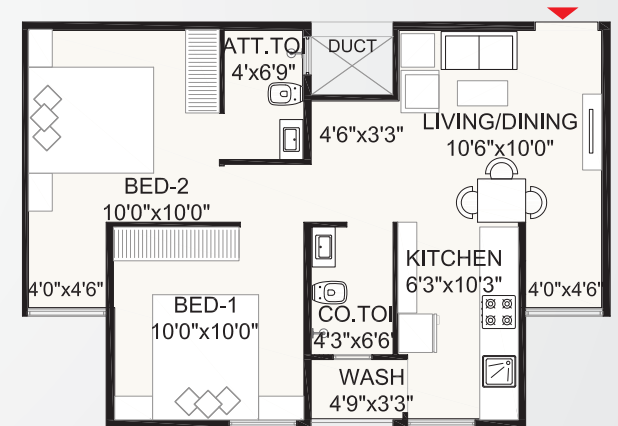
**TYPE C 2 BHK**

S.A. = 1054 SQ.FT. (97.93 SQ.MTS.)  
C.A. = 578.24 SQ.FT. (53.72 SQ.MTS.)



**TYPE D 2 BHK**

S.A. = 958 SQ.FT. (89.03 SQ.MTS.)  
C.A. = 536.59 SQ.FT. (49.85 SQ.MTS.)



**TYPE E 2 BHK**

S.A. = 953 SQ.FT. (88.52 SQ.MTS.)  
C.A. = 530.13 SQ.FT. (49.25 SQ.MTS.)

**SHAUNAK**

1-2 BHK APARTMENTS

S.A. = SALEABLE AREA AS PER TRADE PRACTICE  
C.A. = CARPET AREA AS PER RERA

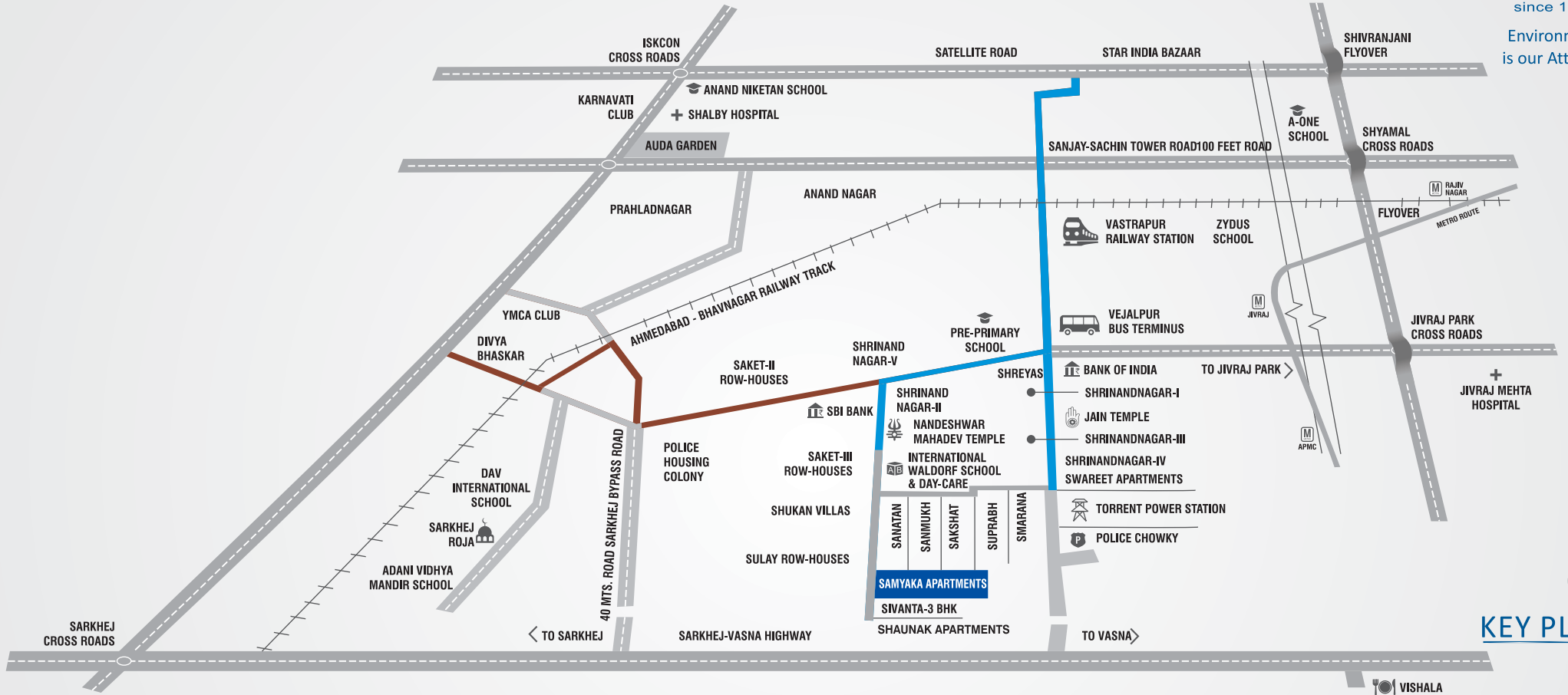
**UNIT PLAN 2 BHK**

All Plans / Areas / Dimensions are Approximate, Average and Unfinished.



**bakeri**  
since 1959

Environment™  
is our Attitude



N  
↑  
**KEY PLAN**

ROUTE 1    ROUTE 2    PROPOSED METRO STATIONS

# SHAUNAK

1-2 BHK APARTMENTS

**bakeri**  
city  
Close to Prahladnagar

**Site:** Beside Sivanta Apartments, Bakeri City, Close to Prahladnagar, Vejalpur, Ahmedabad  
**Corporate Office:** Bakeri Group, 'Sanskrut', Near Old High Court, Off. Ashram Road, Ahmedabad.  
T: +91 79 4000 1300 | Call : +91 98795 06513 | sales@bakeri.com | facebook bakerigroup

**RERA REGISTRATION NO. : PR/GJ/AHMEDABAD/AHMEDABAD CITY/AUDA/RAA00019/A1R/261218 | www.gujrera.gujarat.gov.in**

Disclaimer: Plans, models, specifications, elevations, images, etc. and other details are only indicative and Developer / Owner / Project Consultant reserves the right to change any or all of these in the interest of the development. This material does not constitute an offer and / or contract / or promise / commitment of any type between the Developer / Owner / Project Consultant and the recipient or any other person. Any purchaser / lessee of any unit shall be governed by the terms and conditions of the Agreement to Sell and / or any other documents, etc. entered into between the parties, and no details mentioned in this material shall in any way govern such transactions. Variation in unit areas on account of design and construction variances is possible.