

silver<sup>®</sup>  
**RADIANCE**  
GROW 360°  
2

@ SCIENCE CITY, SOLA

**BUSINESS • GROWTH • SUCCESS**

**EVERYTHING HERE  
HAS A 360° APPROACH.**



silver  
**RADIANCE**  
GROW 360°  
2



12 MT WIDE ROAD



36 MT WIDE ROAD

**GROUND FLOOR**





12 MT WIDE ROAD

APPROACH ROAD



36 MT WIDE ROAD

1st FLOOR





12 MT WIDE ROAD



36 MT WIDE ROAD

**2nd FLOOR**







12 MT WIDE ROAD



36 MT WIDE ROAD

**3rd FLOOR**





silver  
**RADIANCE**  
GROW 360°  
TWO

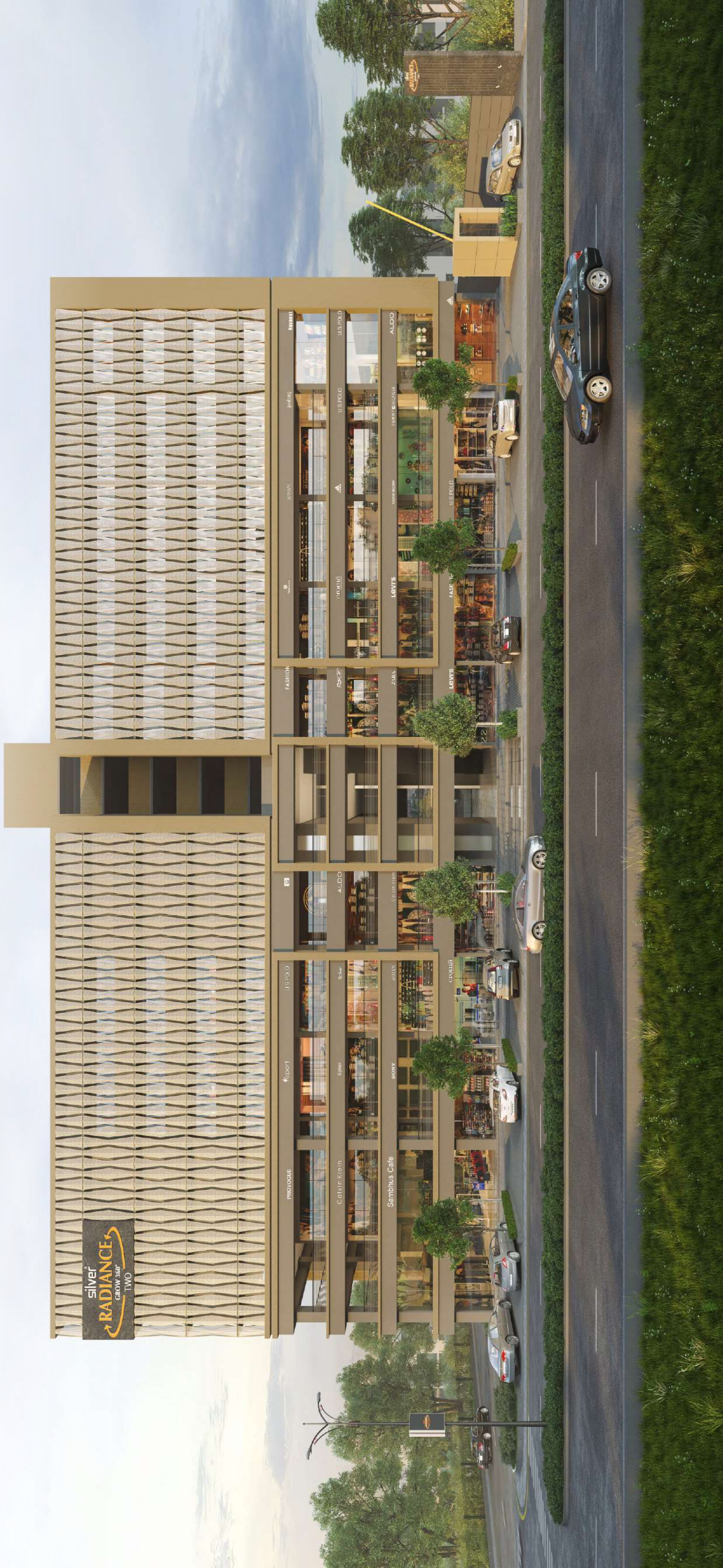
12 MT WIDE ROAD



36 MT WIDE ROAD

**4th FLOOR**





12 MT WIDE ROAD



36 MT WIDE ROAD

**5th FLOOR**





12 MT WIDE ROAD



36 MT WIDE ROAD

**6th FLOOR**







12 MT WIDE ROAD



36 MT WIDE ROAD

**7th FLOOR**





## PROJECT SPECIFICATIONS

- Round the clock security surveillance system.
- Professionally property management system.
- Optical fiber network building.
- 7 High-Speed Elevator system of MNC Brand.
- Triple basement with mechanized car parking system.
- Convenient provision for outdoor AC units.
- Vitrified tiles in flooring. Glazed tiles in toilets.
- RCC frame structure with Seismic Zone ||| Compliance.

ARCHITECT

placekinesis associates **pka**

## DISCLAIMER

- ₹. 500/- Per Sq. Ft.(Super Built-Up) For AMC, Torrent & Legal
- ₹. 5.00 Per Sq. Ft.(Super Built-Up) per month for up to 60 months (₹. 5.00 X 60 = ₹. 300 Per Sq. Ft.)
- Maintenance Charges to be borne by member for maintenance of building; to be maintained by Avirat Group.
- ₹.100/- Per Sq. Ft.(Super Built-Up) for maintenance deposit.
- Stamp Duty, Registration, Legal Documentation, Service Tax Charges shall be borne by the purchaser.
- Any additional charges or duties levied by the Government / Local authorities during or after the completion of the scheme will be borne by the purchaser.
- Commencement and timely execution of the project is subject to all necessary approvals from relevant Government authorities, occurrence of natural calamities or any other external factors beyond the developer's control.
- Possession Period is 36 months approximately from the date of start of construction.
- The dimension shown are approximates.
- The Developer/Architects reserves the rights to change, revise or make any modification, additions, omission or alteration in the scheme as a whole part thereof at their sole discretion.
- The Brochure is only for illustration purpose and is not a legal document or a binding one.
- Subject to Ahmedabad Jurisdiction.

RERA REGISTRATION NO.

PR/GJ/AHMEDABAD/AHMEDABAD CITY/AUDA/CAA03400/120918

<https://gujrera.gujarat.gov.in/>

 **AVIRAT**  
G R O U P