

## SPECIFICATION

### Structure:

R.C.C Framed Structure, brick structure for exterior and interior

### Flooring:

24"X24" Vitrified tiles for all rooms, Anti-Skid Ceramic Tiles in bathroom, Anti-Stain Tiles in Kitchen

### Wall Tiles:

Ceramic Tiles Upto 7'0" Ht in toilets, 4ft Ht dado ceramic tiles above granite platform in kitchen.

### Kitchen :

Granite top kitchen platform with stainless steel sink

### Joineries :

#### Main Door :

Teak wood frame and door with varnish finish

#### Bedroom Door:

Country wood Frame & Designer finished ready made door with enamel paint finish

#### Toilet Door:

ISI PVC door & frame

### Windows :

Teak Wood Window & MS Flat Grills

### Electrical :

Anchor/Equivalent modulator switches, ISI wire.

### Santitation:

Parryware / equivalent EWC and wash basin in white color with wall mixer, health faucet provided

### Painting:

Interior walls : Finished with emulsion paint on putty

Exterior walls : Finished with emulsion paint

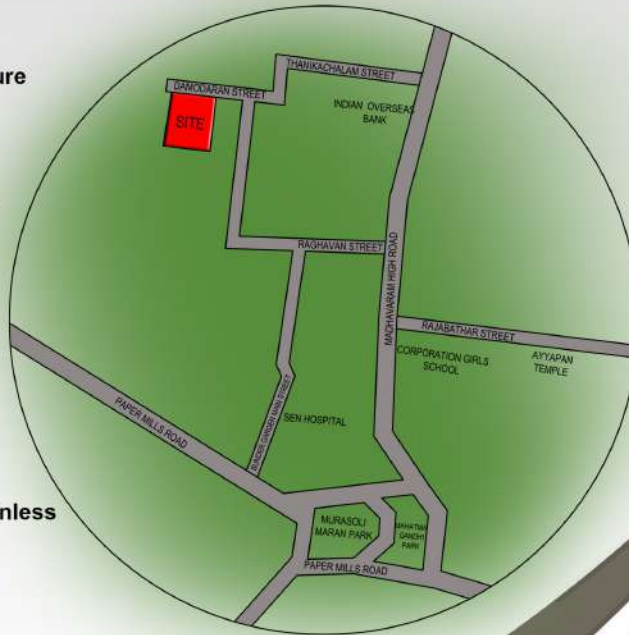
Water supply : Borewell water in at tap points

Power supply : 3 phase power supply with ACCL

## SITE ADDRESS:

New No - 31 , Old no - 11, Damodaran Street , Perambur, Chennai - 600 011. PH No - 78710 69991.

## KEY PLAN



# ADARSH NEST

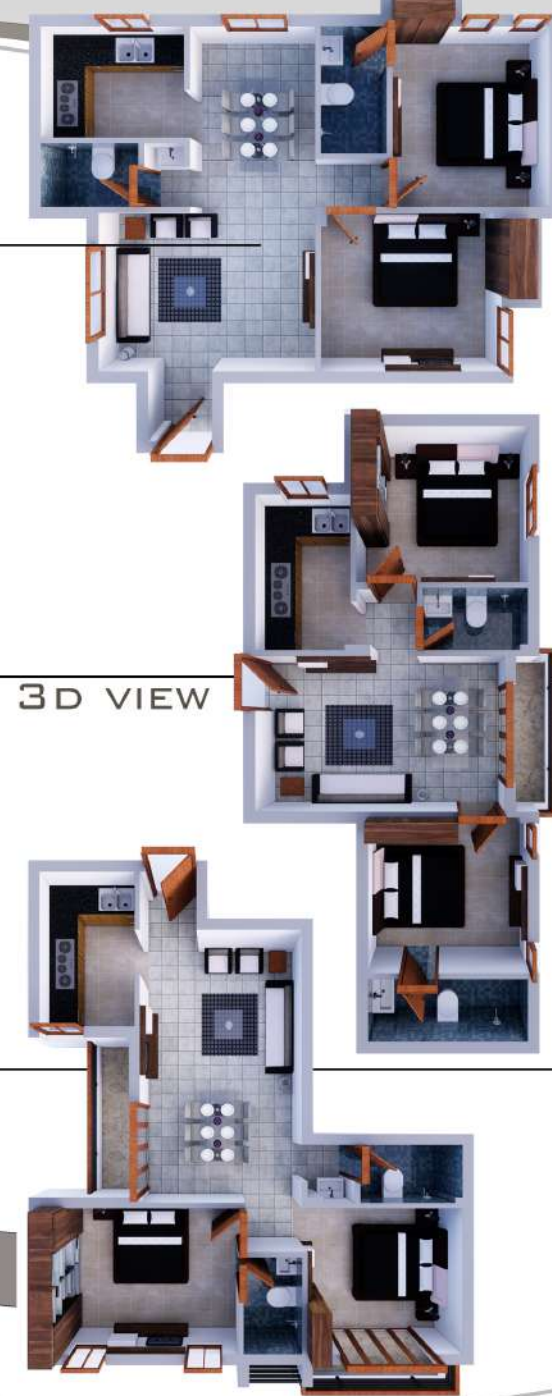
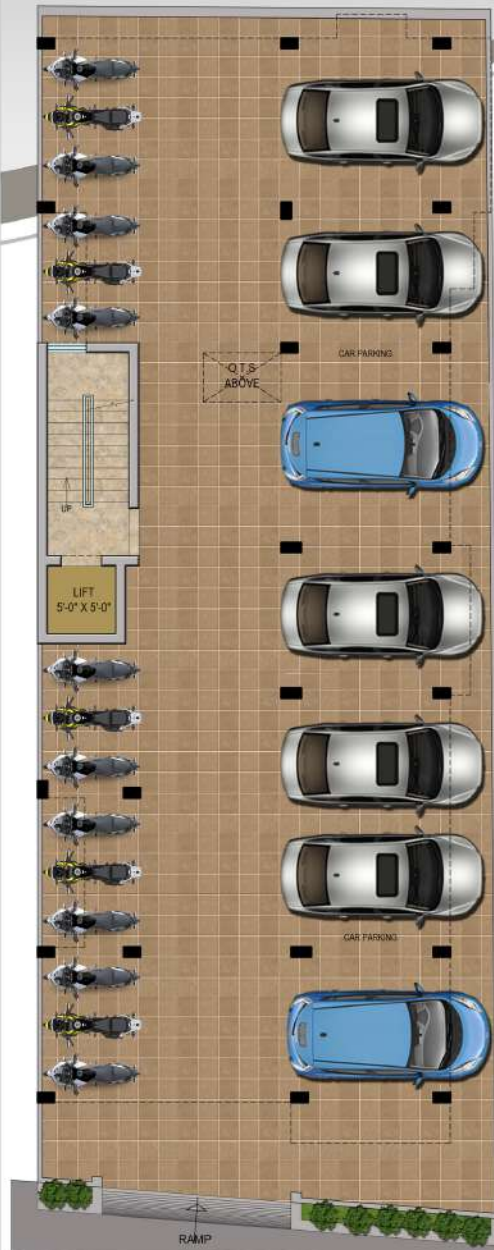


## SWARNA HOMES

NO- 7/7 , S.S.V KOIL STREET. RAMANA NAGAR, CHENNAI - 600 011. PH NO: 78710 69996 / 78710 69992.







STILT FLOOR PLAN

FIRST & SECOND FLOOR PLAN

THIRD FLOOR PLAN