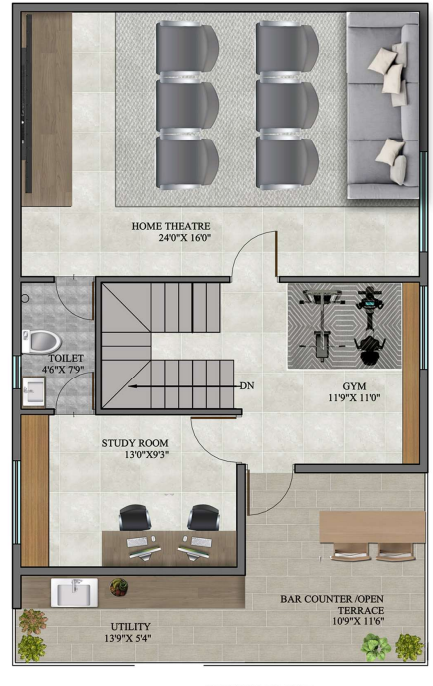




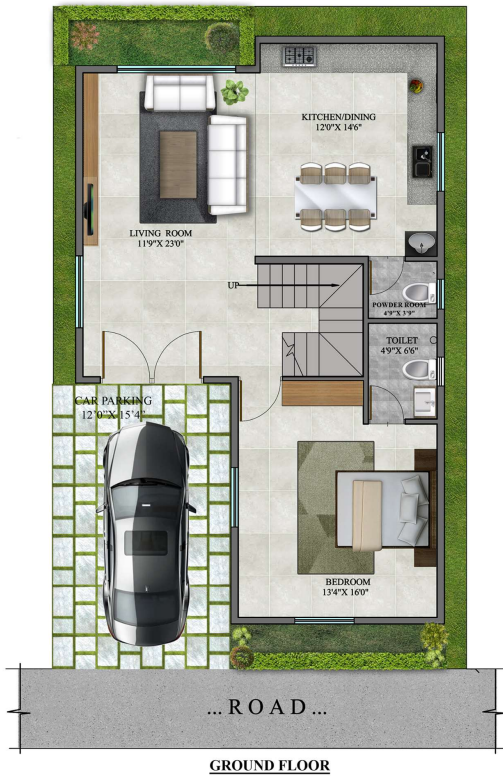
SALIENT FEATURES

- ZERO ELECTRICITY BILL FOR NEXT 25 YEARS
- 9*4 FEET SIZE MAIN DOOR (TEAK WOOD)
- GROUND FLOOR (ITALIAN MARBLE)
- FIRST FLOOR (WOODERN FLOORING)
- SECOND FLOOR (VITRIFIED FLOORING)
- 4 BEDROOM+1 MULIPURPOSE HALL
- 6000 SQ.FT OF CLUB HOUSE
- COMPLETE UNDERGROUND CABLES FOR ELECTRIC AND PIPELINES STP &WTP
- PAVED DRIVEWAYS
- TEMPERATURE CONTROLLED SWIMMING POOL.

EAST FACING



WEST FACING



CLUB HOUSE



TERRACE VIEW



CLUB HOUSE



GLASS ON ALL THREE SIDE



SPECIFICATIONS

SUB STRUCTURE

EARTHQUAKE RESISTENT RCC FRAMED STRUCTURE ON FOOTING OVER HARD STRATA WITH PINTH BEAMS FOR EXTRA SAFETY BY USING STEEL AND CEMENT OF REPUTED MAKE.

SUPER STRUCTURE

RCC FRAMED STRUCTURE / BLOCK MASONARYWALLS AS PER STRUCTURAL DESIGN.

PLASTERING

ALL INTERNAL WALLS ARE FINISHED WITH CEMENT PLASTER WITH SMOOTH FINISH.

ALL EXTERNAL WALLS ARE CEMENT PLASTER WITH SAND FINISH.

ELEVATION

FRONT BALCONY : TOUGHENED GLASS (SAINT-GOBAIN OR EQUIVALENT BRAND)

WITH STAINLESS STEEL RAILING (BRANDED COMPANY)

CLADDING MATERIAL : AS PER ELEVATION.

KITCHEN

AN OPEN, WELL-VENTILATED KITCHEN

COUNTER TOP : GRANITE PLATFORM (BLACK GRANITE)

SINK: CARYSIL (IMPORTANT BRAND) OR EQUIVALENT BRAND.

WALL TILES : 2 FEET HEIGHT GLAZED TILES.

PROVISION FOR EXHAUST FAN

PROVISION FOR PLUMBING POINT IN UTILITY AREA FOR WASHING MACHINE

UTILITY SINK : SS SINK WITH DRAIN BOARD.

DOORS & WINDOWS

MAIN DOOR :SOLID TEAK WOOD FRAME WITH TEAK DOORS.

INTERNAL DOORS : SOLID WOODEN FRAME WITH WELL –DESIGNED FLUSH DOORS.

TOILETS AND TERRACE DOOR : WATER PROOF FLUSH DOOR.

FRENCH WINDOW AND FRENCH DOOR : UPVC WITH SAINT-GOBAIN GLASS EQUIVALENT BRAND.

THREE TRACK WINDOW : THREE TRACK UPVC WINDOWS WITH MOSQUITO MESH.

LOCK SYSTEM

MAIN DOOR LOCK : SMART LOCK

BED ROOM LOCKS : BRANDED LOCK

STAIRCASE RAILING

TOUGHENED GLASS (SAINT-GOBAIN EQUIVALENT BRAND) WITH STAINLESS STEEL RAILING (BRANDED COMPANY) WITH BRANDED FITTINGS.

PAINT

INTERNAL WALLS : 2 COATS OF WALL PUTTY (BIRLA BRAND). ONE COAT OF PRIMER, TWO COATS OF PAINTING (PEMMIUM EMULSION-ASIAN PAINTS)

EXTERNAL WALLS : TWO COATS OF WHITE CEMENT (BIRLA) AND TWO COATS OF EXTERIOR EMULSION (ASIAN PAINTS).

BATHROOM

TILES : GLAZED TILES WITH HIGHLITER (BRANDED COMPANY).

WALL MOUNTED SYSTEM : FOR MASTER BEDROOM TOILET AND TWO BEDROOM TOILETS (HINDWARE OR EQUIVALENT BRAND)

CUBICAL PARTITIONING : FOR MASTER BEDROOM.

WATER SUPPLY

HOT AND COLD WATER SUPPLY : CPVC PIPES ASHIRVAD BRAND OR EQUIVALENT BRAND.

SANITARY & FITTINGS

COMMUNES : HINDWARE COMPANY (COLOUR-WHITE) ITALIAN OR ANY OTHER GOOD COLLECTION.

WASH BASINS : FOR ALL TOILETS AND DINING (HINDWARE BRAND)

TAPS : JAQUAR BRAND OR EQUIVALENT BRAND (FOR ALL TOILETS).

PROVISION FOR GEYSER : IN ALL TOILETS
PROVISION FOR SOLAR HOT WATER : FOR THREE TOILETS AND KITCHEN
(ASHIRVAD BRAND OR EQUIVALENT BRAND)

ELECTRICAL

CABLE : HAVELLS OR EQUIVALENT BRAND, WIRING THROUGH PVC
CONDUITS CONCEALED IN WALLS AND CEILINGS.
MODULAR SWITCHES : HAVELLS OR EQUIVALENT BRAND.
TV POINT : LIVING & MASTER BEDROOM
SPLIT A/C POINT : LIVING AND ALL BEDROOMS.
SOLAR : PROVISION FOR SOLAR PANELS.

PARKING

CAR PARKING : WELL PLANNED SUFFICIENT CAR PARKING WITH WELL
DESIGNED.

WATER SUPPLY

AUTOMATED 24/7 WATER SUPPLY FOR EACH VILLA.

VAASTU

100% VAASTU FOR THE CONSTRUCTION OF ENTIRE VILLA.

AMENITIES



• Barbeque



• Cricket pitch



• Table Tennis



• Banquet Hall



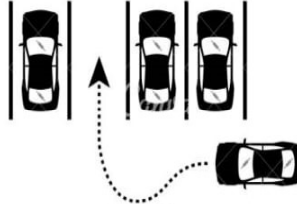
• Medicinal trees



• Badminton



• Basket Ball



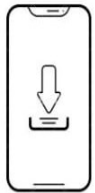
• Parking



• Gym



• Working Space



• My Gate
(app)



• Indoor Games



• Jogging Track



• Yoga



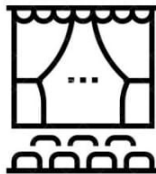
• CCTV(360)



• Kids Play Area



• Park



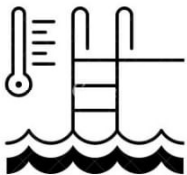
• Theatre



• Creche



• Billiards



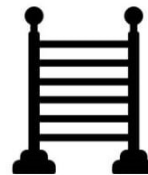
• Swimming Pool



• Wi-Fi



• Suite Rooms



• Trellis Seating



• Water Curtains



• Club House



• Party Hall



• Virtual Games



• Skating Ring



• Toddler's Pool

CONTACT US :