

Project by



VIVAAN



VIVAAN
ELEMENTOS



VIVAAN
ELEMENTOS 

THRIVE WITH THE LIFESTYLE

A Lifestyle that expands on your mind and body freshness, imagination, work and play. Vivaan Elementos inducts you into the ease of living with tight security arrangements, recreational facilities with age focused zones and amenities that are more than what you can expect. A 3BHK life at Vivaan Elementos combines the elements of energy, calmness, flexibility and airy lifestyle. When a home has all the elements into consideration in the living perimeter itself - what more can you ask for?



VIVAAN
ELEMENTS





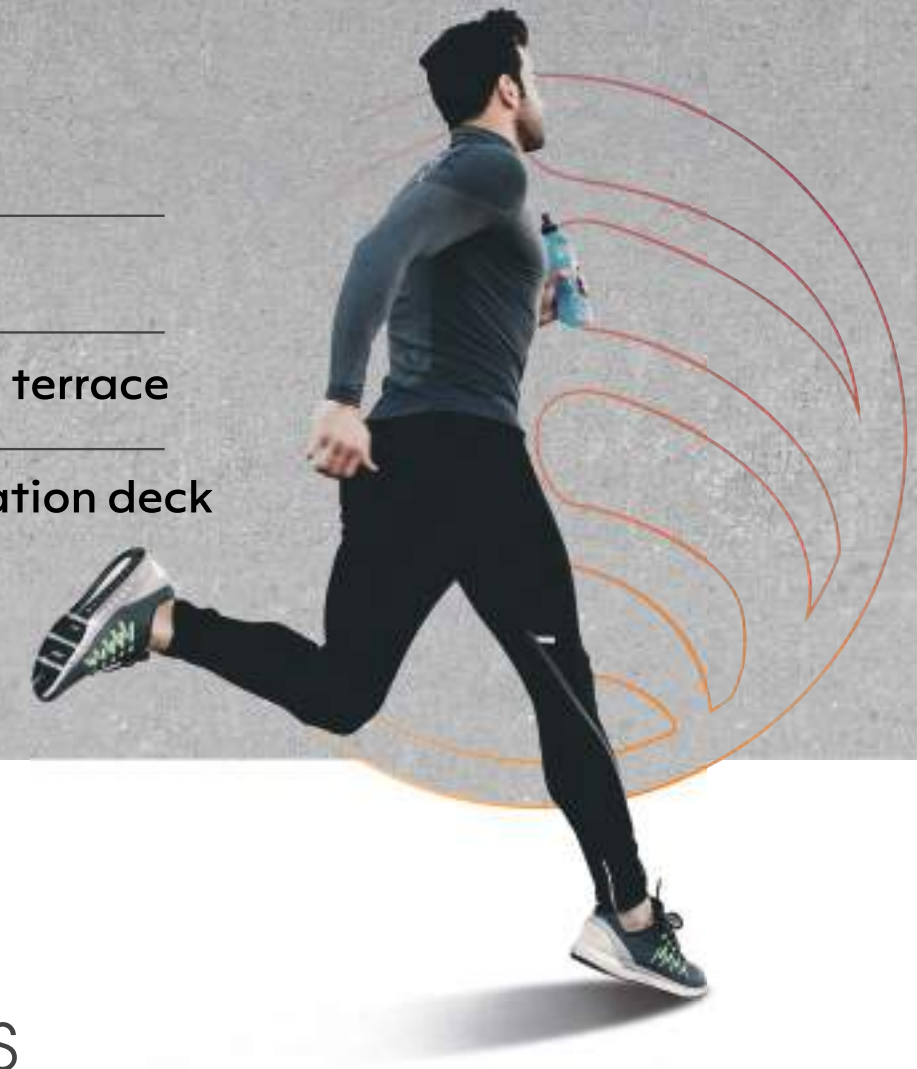
EMBRACE THE FRESHNESS

Terrace Garden

Gazebo

Jogging track on terrace

Yoga cum meditation deck



VIVAAN
ELEMENTOS

VIVAAN
ELEMENTS





IMPROVED HEALTH & KNOWLEDGE

Gymnasium

Indoor Games

Library



VIVAAN
ELEMENTOS



PLAY, CHAT OR JUST RECLINE

Landscaped garden

Senior citizen sittings

Toddler play area

Children play area



VIVAAN
ELEMENTOS

VIVAAN
ELEMENTOS





BRILLIANCE RIGHT FROM THE ENTRANCE



Multi-purpose sports court

(volleyball / box cricket practice area)

No vehicle zone

3 level parking



VIVAAN
ELEMENTOS

VIVAAN
ELEMENTOS



GROUND FLOOR



FIRST FLOOR



TYPICAL FLOOR



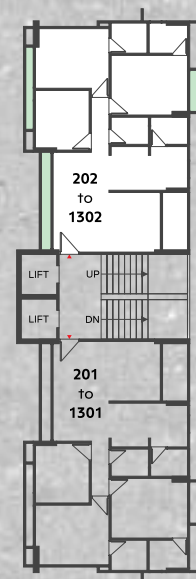
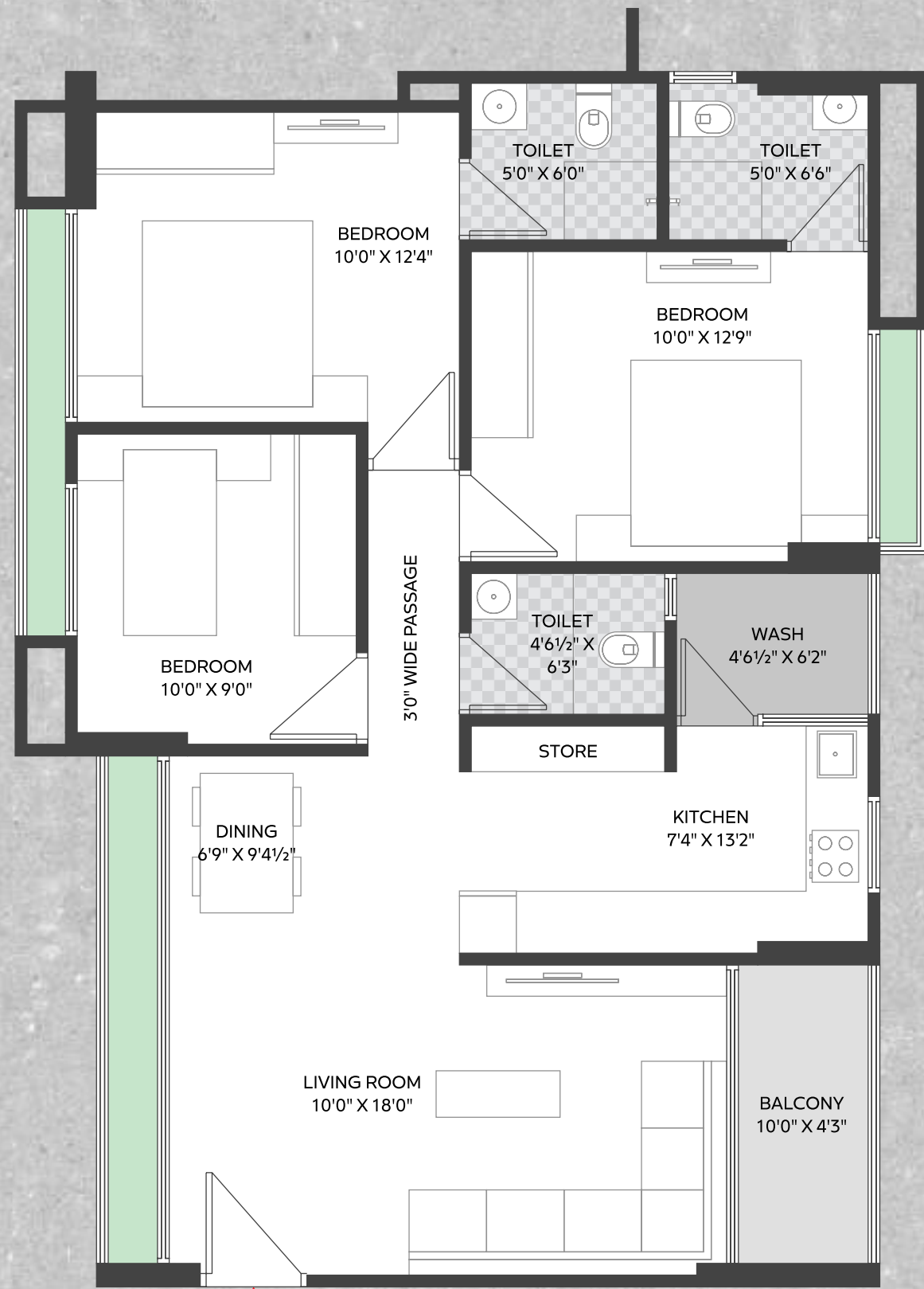
TERRACE LAYOUT



TYPE - 1 (3 BHK) | BLOCK - A & C



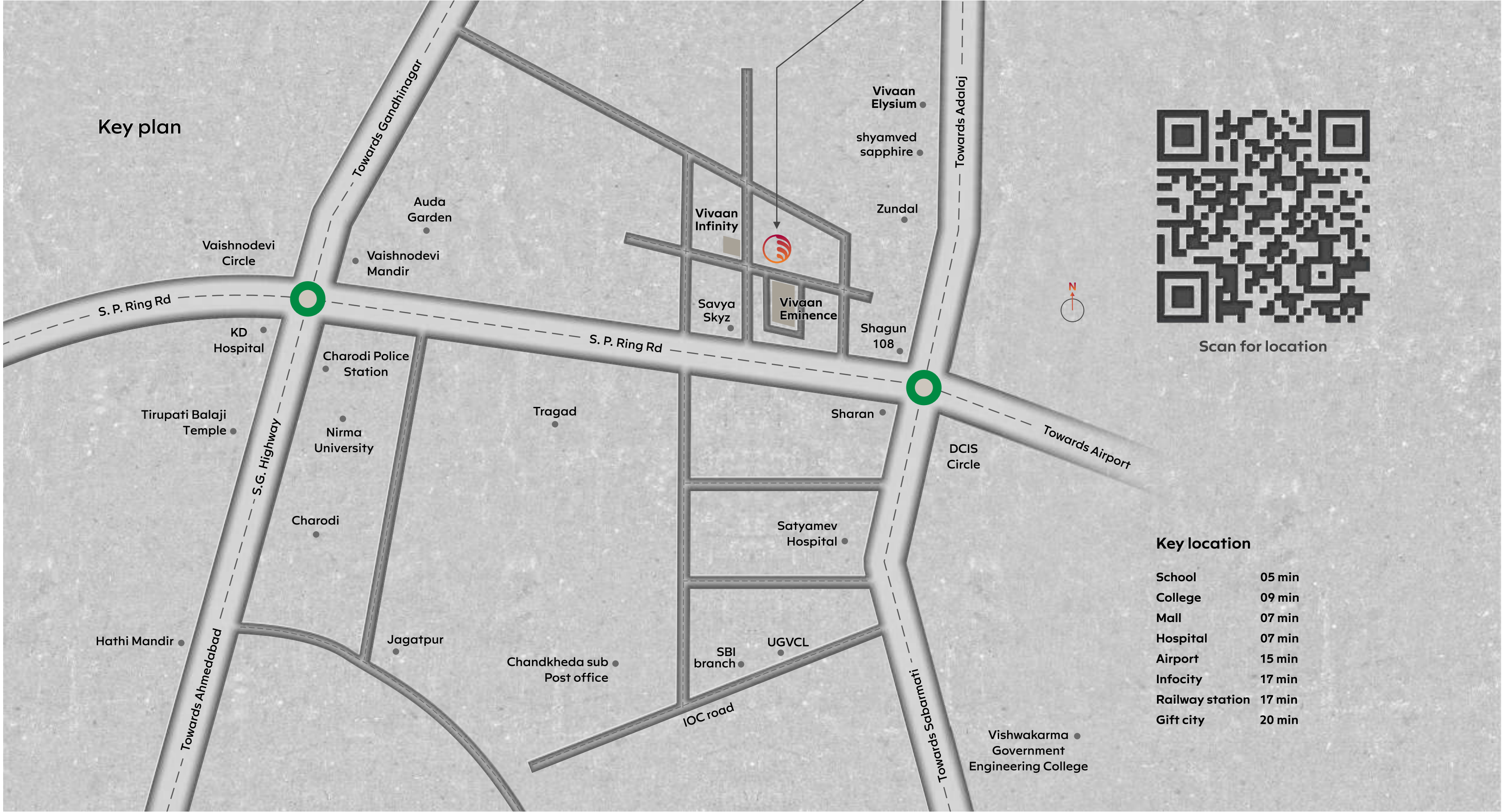
TYPE - 2 (3 BHK) | BLOCK - B



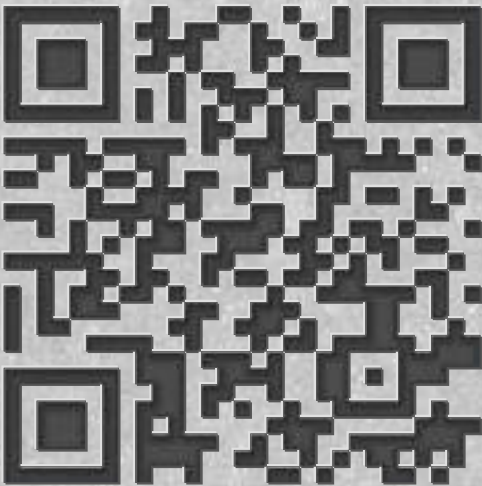
VIVAAN ELEMENTS

Opp. Vivaan Eminence, B/h. Savya Skyz, Between Divine Circle and Vaishnodevi Circle, S. P. Ring Road, Zundal, Ahmedabad-382421

Contact : 82 82 82 22 24 | info@vivaanrealty.com | www.vivaanrealty.com
 f/Vivaan-106711324294191/ @/vivaanahmedabad/



Key plan



Scan for location

Key location

School	05 min
College	09 min
Mall	07 min
Hospital	07 min
Airport	15 min
Infocity	17 min
Railway station	17 min
Gift city	20 min



Specifications

Structure

Earthquake Resistant RCC frame structure.

Flooring

Good quality vitrified tiles flooring in all area. Paver / stone flooring in ground floor area.

Toilet / plumbing

Glazed tiles dado in all toilets with exclusive design up to lintel level. Concealed plumbing with good quality cp fitting. Plumbing provision for A/C.

Electrification

With AC, TV, Phone, PC and other required unit points in all the rooms. With modular / standard quality switches. ELCB / MCB in each apartment.

Kitchen

Granite top kitchen platform with S.S. Sink & wall tile dado up to lintel level.

Door

Decorative main entrance door & wooden or stone frame with flush door for internal rooms and S.S. / brass C.P. Hardware fitting or equivalent. PF grade wooden doors for toilets.

Window

Aluminum powder coated / anodised window with stone gems around.

Plaster & paint

External double coat plaster with acrylic paint and internal mala plaster with wall care putty. Interior paint in all common areas.

Elevators

Lift of standard quality with elegant interior, electronic digital system with sufficient capacity & high speed.

Salient features

- RCC earthquake resistance structure with excellent quality construction.
- Entrance gate - security cabin and compound wall fitted with attractive luminaries.
- Elegant and spacious entrance foyer.
- Special water proofing & heat resistance on terrace with china mosaic tiles.
- Loanable clear titles.
- Over head & underground water tank of Sufficient capacity.
- 24 hours water supply by hydraulic pump & bore well.
- Piped gas supply in each apartment through gas bank/gspc png supply.
- Landscape common plot with children's play area and senior citizen area.



Attractive
entrance foyer



Sitting lounge



Society office



2 standard
lifts



DTH
Connection



PNG line
provision



CCTV
camera



Security
cabin



Power
back up



Fire
safety

RERA No.

PR/GJ/GANDHINAGAR/GANDHINAGAR/AUDA/MAA07598/A1M/010721 | www.gujrera.gujarat.gov.in

Developers

INFINITY
INFRA

Architect

9TH STREET
ARCHITECT

MEP Consultant



Structure



Landscape
Consultant

ZENITH

Scan for
360° Virtual Tour



NOTES: Changes in elevation shall not be allowed to be done by members of society. All the government & semi government changes like stamp duty, service tax/GST, Vat and any tax by state or central government shall be borne by members. Legal documentation charges, UGVCL, PNG gas connection charges, AUDA, Narmada water charges, Advance maintenance shall be borne by the members separately. All the rights are reserved by developer to make any changes in Layout plan, Exterior elevation, Dimension and other details there in to comply with statutory regulation shall be binding to all the members. Any additional liabilities due to change in the bye laws, shall be borne by members. This brochure is not as legal pan of document but only for easy presentation to members. Subject to Ahmedabad jurisdiction.