



VINCITORE
RIVERA

3 BHK APARTMENT

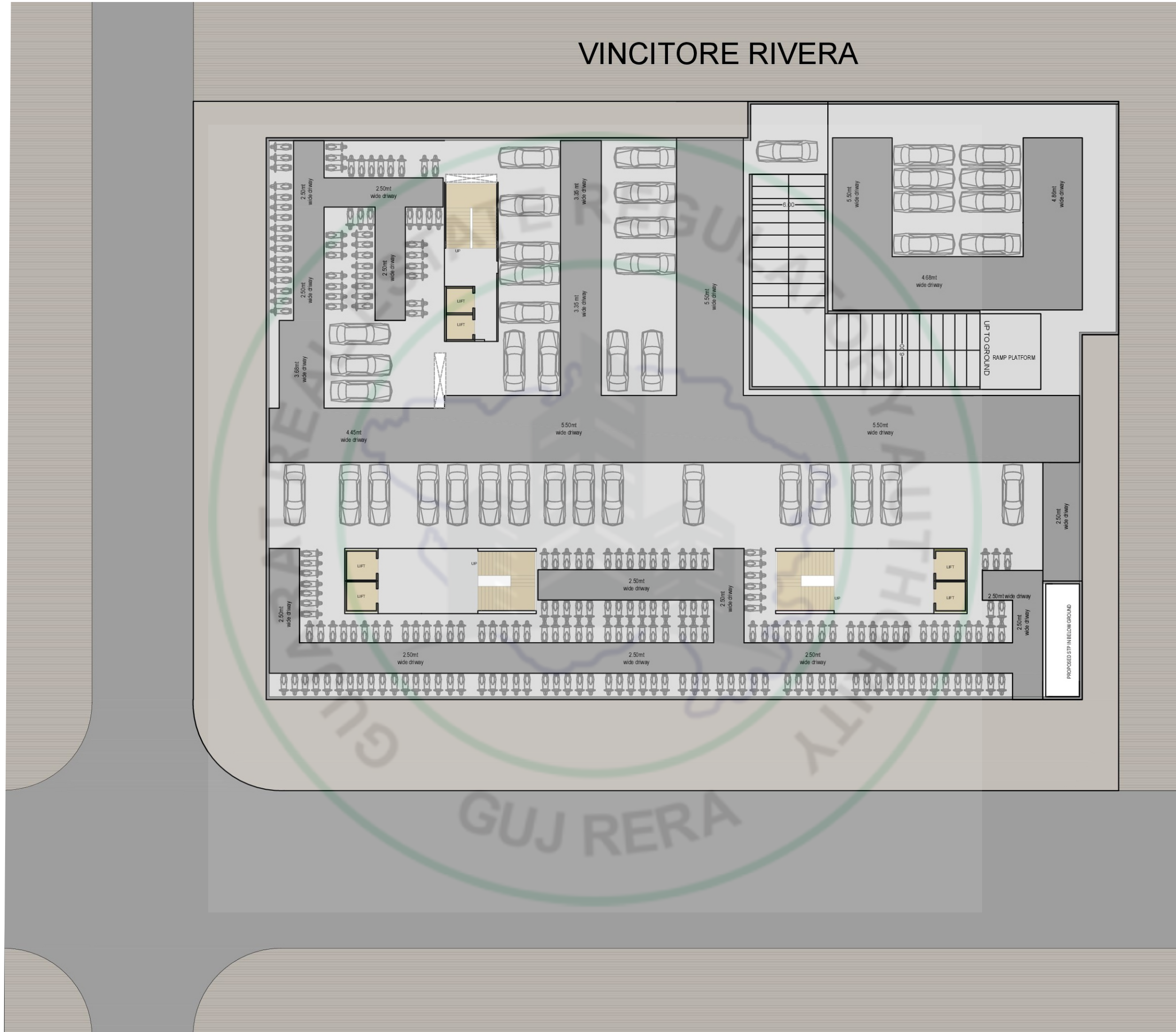






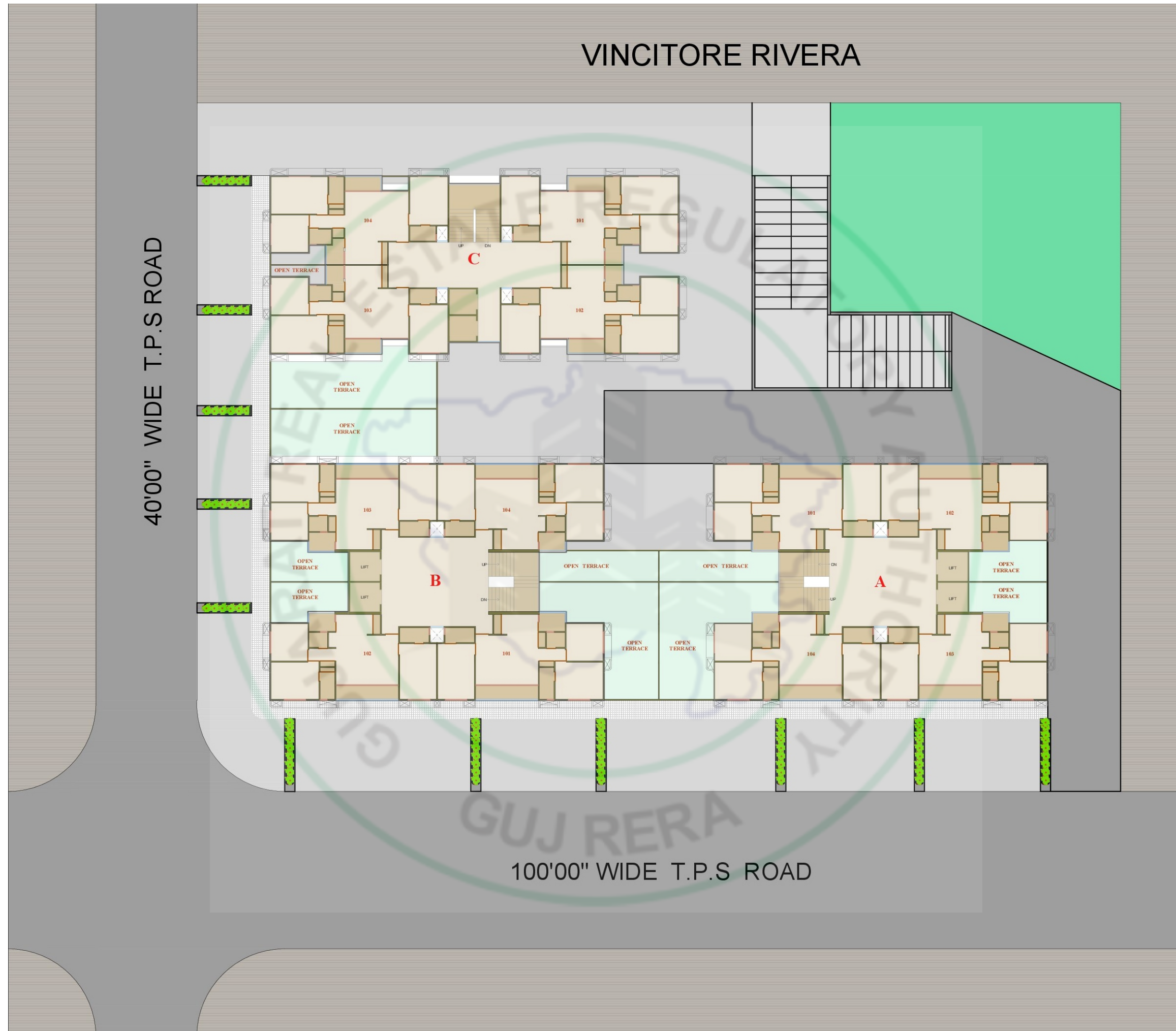


VINCITORE RIVERA



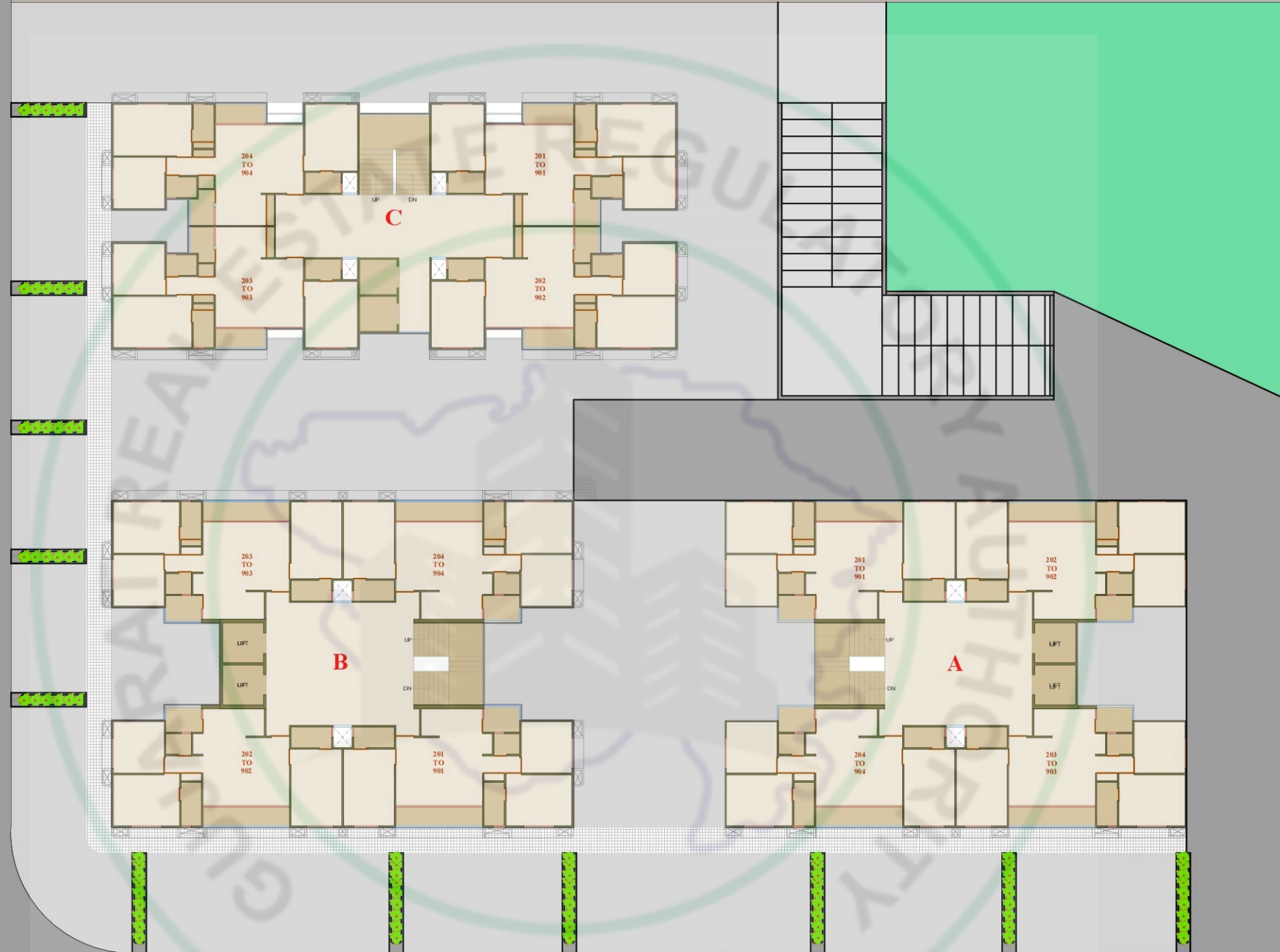
VINCITORE RIVERA



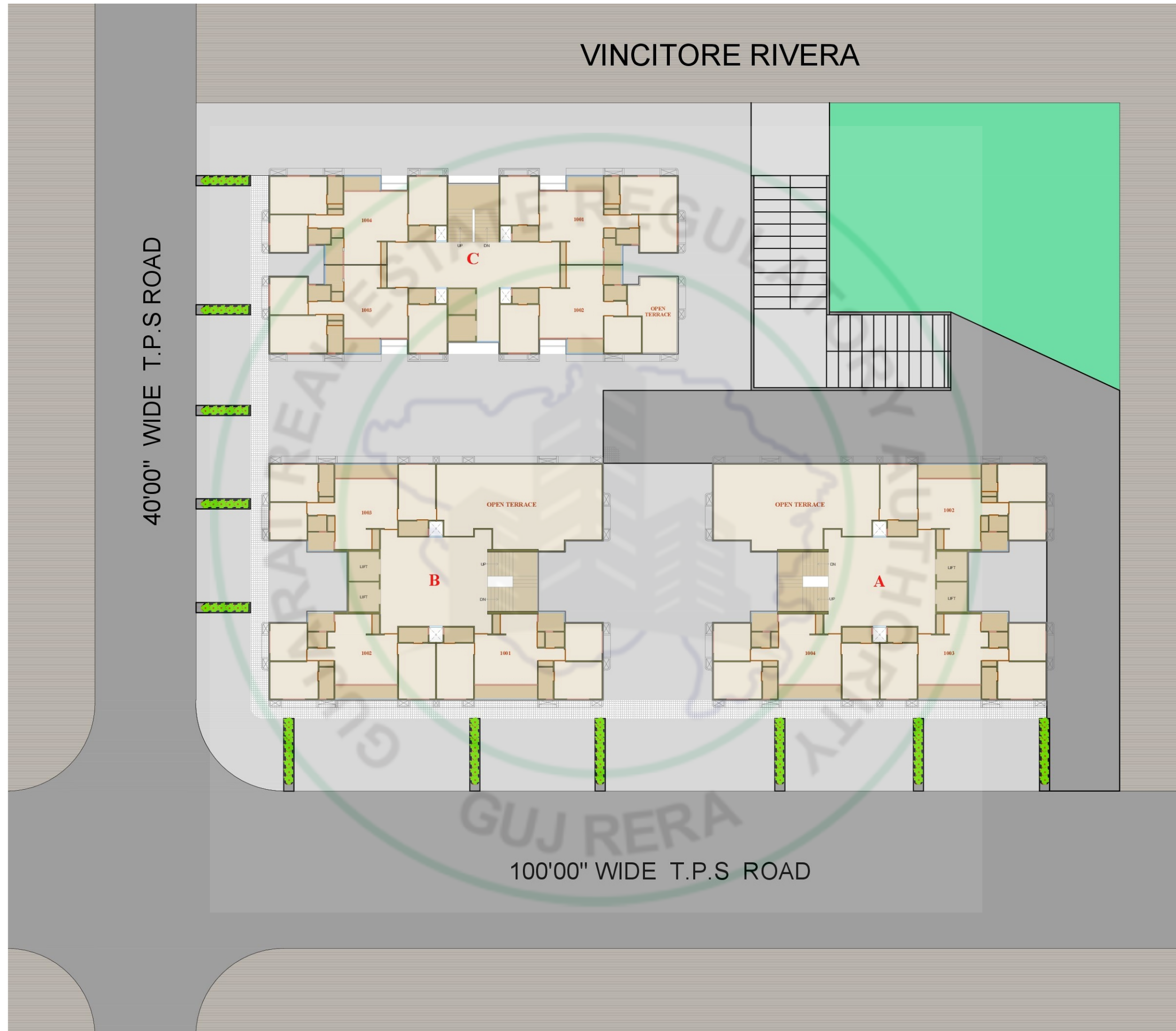


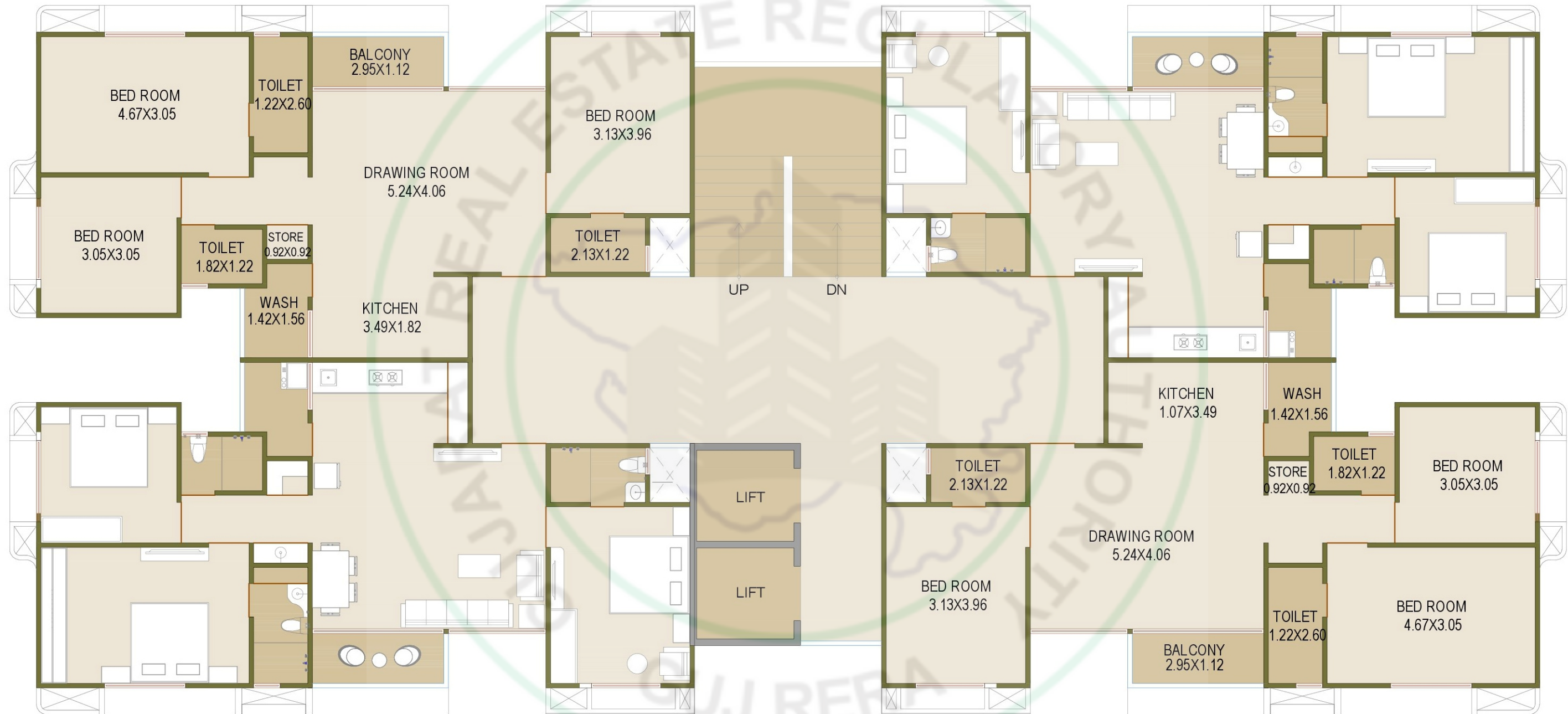
VINCITORE RIVERA

40'00" WIDE T.P.S ROAD



100'00" WIDE T.P.S ROAD





SPECIFICATION

Structure	Earthquake resistant R.C.C. frame structure as per by laws.
Flooring	Vitrified tiles flooring in all apartments.
Wall Finish / Elevation	Internal mala plaster with white finish putty. Attractive external elevation with double coat plaster. with acrylic paint.
Doors & Windows	Main door & other flush doors with frame. All windows in aluminum section with granite frame.
Kitchen	Polished granite platform with S.S. sink, glazed tiles up to lintel level.
Electrification	Branded ISI modular switches with concealed copper wiring and adequate number of points. MCB distribution panel.
Plumbing	ISI CPVC and UPVC pipes for water supply, PVC & Swr pipes for solid waste and drainage systems.
Toilet	Designer tiles on floor and walls up to lintel level. Branded sanitary & bath fittings.
Terrace	Waterproofing chine mosaic for heat reflection
Fire Safety	Fire Safety System Facilities



VINCITORE RIVERA

A PROJECT BY:



SITE ADDRESS:

Vincitore Rivera, 100 Ft Road, Nr. Dwarkesh Farm,
Madhav Farm Road, Vastral, Ahmedabad - 382 418.

+91 89802 82282, +91 94262 81284

RERA

www.gujrera.gujarat.gov.in

ARCHITECT:



STRUCTURAL:

