



Welcomes you for

# THE EXCULSIVE BUSINESS MEET





## About Developer

Established in 2008, Platinum Buildcon is renowned for integrity, competence, and professionalism. We are a brand hailed for our trustworthy expertise and experience in the real estate industry. Platinum Buildcon is particularly driven about providing an extraordinary experience to homeowners looking for an exceptional lifestyle.

Situated in a mix of professional and communal culture, our organisation prides itself in providing singular attention to the customer. We nurture relationships, respect deadlines, and above all value the faith shown by the customer. We truly believe that the way to success is by providing solutions, emphasising innovation, and the zeal to value each client, each transaction.

**11+**

Years in the  
Industry

**600+**

Happy  
Customers

**8+**

Projects  
Delivered

**4L+**

Sq.Ft. Under  
Construction



**Manoj Yeole**  
Director

## TOP MANAGEMENT

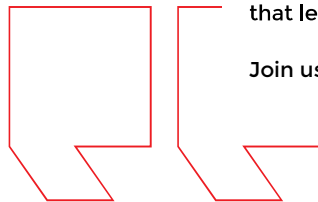
---

Welcome to Platinum Marvelle, an epitome of opulence and innovation meticulously crafted by Platinum Buildcon for Indian lifestyles.

Driven by the aspiration to redefine Balewadi's skyline, Platinum Marvelle stands as an architectural marvel designed to surpass expectations. Here, you not only get to go higher by reaching new heights in the elevation, but you also get the opportunity to elevate your standard of living. The vibrant and lively homes beckon you to an unparalleled experience where every detail exudes elegance and comfort.

Once you step into Platinum Marvelle, we promise you a sanctuary so captivating that leaving will be the last thing on your mind.

Join us in embracing a lifestyle that transcends the ordinary.





**Hafeez Contractor**  
Architect

---

## A TIMELESS MASTERPIECE

---

As an avid advocate for high-rise architecture, I believe that its allure lies not just in its majestic grandeur but also in its inherent ability to address the pressing needs of our time.

---

# WHY BALEWADI?

—



# A LANDMARK LOCATION

---

## A MARVEL IN THE MAKING

### Shopping Centres



---

» Gravity	5 mins
» Balewadi High Street	5 mins
» D Mart	5 mins
» Phoenix Mall of the Millennium	9 mins
» Commercial Wall Wakad	10 mins
» Xion Mall	14 mins

### Education Centres



---

» MITCON International School	3 mins
» PICT Model School	7 mins
» Indira College of Architecture & Design	12 mins
» D.Y. Patil Institute	5 mins

### Hospitals



---

» Surya Super Speciality Hospital	7 mins
» Lifeline Multispeciality Hospital	9 mins
» Jupiter Hospital	10 mins
» Prime Multispeciality Hospital	12 mins
» Ruby Hall Clinic	17 mins

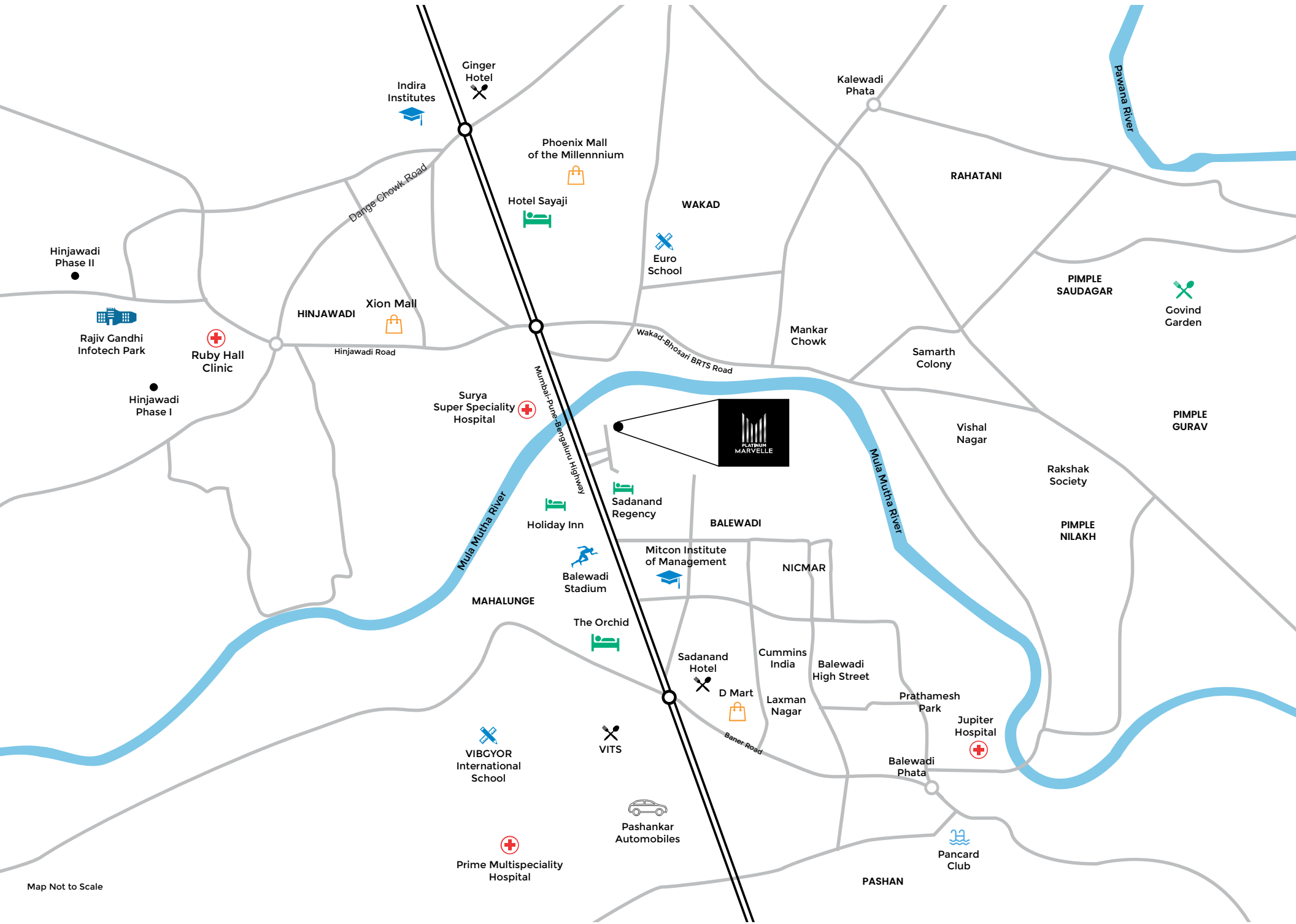
### Connectivity



---

» Hinjawadi Flyover	2 mins
» Pune-Mumbai Expressway	15 mins





Map Not to Scale

PASHAN



# PROJECT OVERVIEW

—





**3B+G+**  
**34 Storeys**  
of Marvellous  
Architecture

**11<sup>th</sup> Floor**  
Recreational Pad  
for Rejuvenation

**3 Levels**  
of Parking

**3 Levels**  
of Amenities

# PROJECT HIGHLIGHTS



4, 3 & 2 BHK  
**Bed Residences**



3B+G+34 Storeys  
**Landmark Design**



Residences with  
**Sprawling Carpet Areas**



A Landmark Location with  
**Unparalleled Connectivity**



One of a kind  
**Duplexes & Penthouses**



Premium Abodes with  
**Mesmerising River Views**



Alluring Amenities  
**Over 3 Levels**



Unique Recreational  
**Pad on 11<sup>th</sup> Floor**



# USPS OF THE PROJECT

---

1. Tallest tower of Balewadi (34+3)
2. International class elevation with 70% glass facade externally
3. Designed by Padmashree hafeez Contractor
4. Most prime location with highway and upcoming metro station within 700 mts
5. Unique recreational floor on 11th floor with wifi gaming zone and music space
6. Temperature controlled swimming pool
7. Solar water system in all bathrooms
8. Sprawling carpet areas
9. Zero wastage layouts
10. Top notch internal specifications





# REDEFINING THE SKYLINE OF BALEWADI

A TOWERING STRUCTURE  
WITH UNMATCHED DESIGN





Every home is a testament to precision and innovation, with well-planned amenities catering to your every need.

## LAYOUT PLAN

---

1. Entrance Gate
2. Entrance Lobby
3. Cafe
4. Changing Room
5. Swimming Pool
6. Children's Play Area
7. Multipurpose Court
8. Deck with Sitting Area



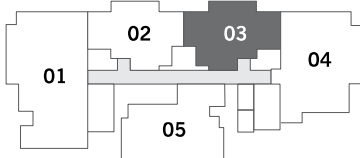
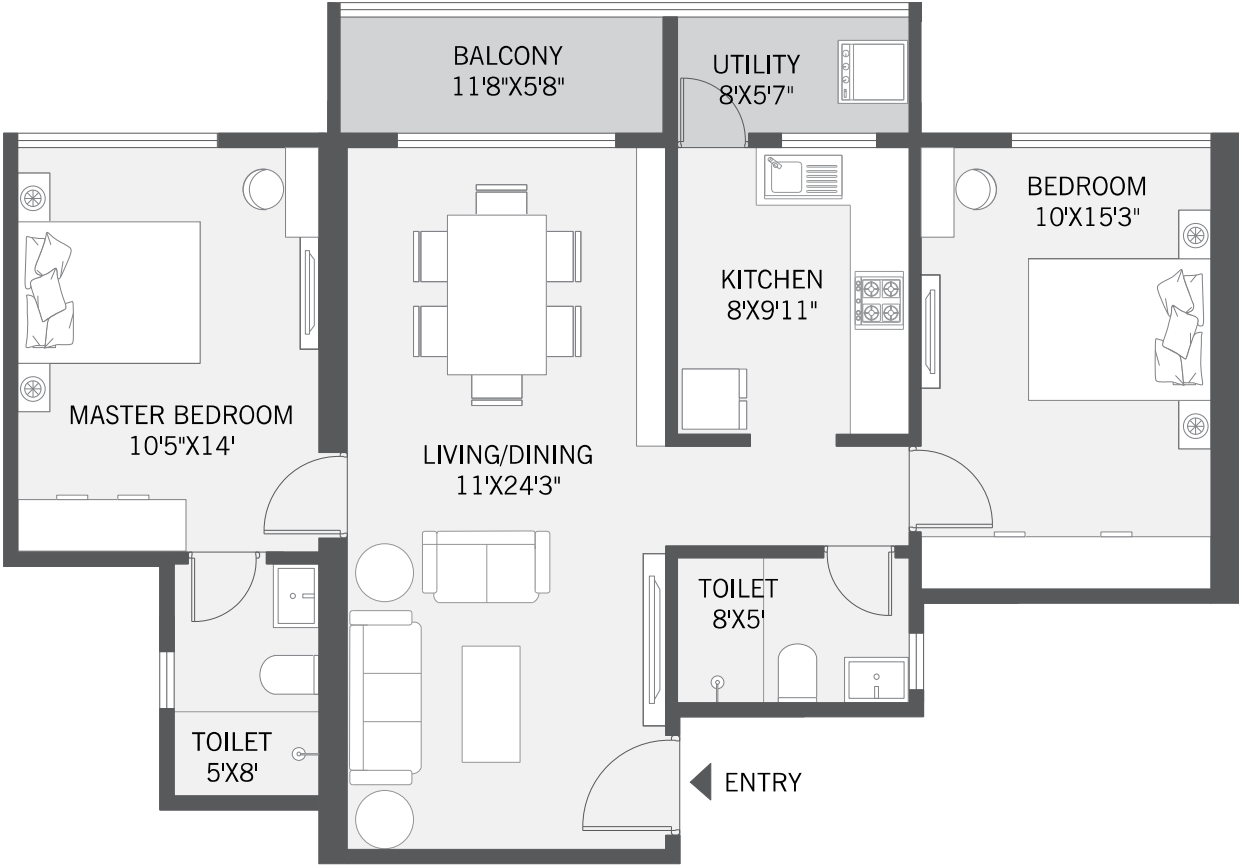


**TYPICAL  
FLOOR PLAN**



# 2 BHK (TYPE 1)

Carpet Area:  
894 Sq.Ft.



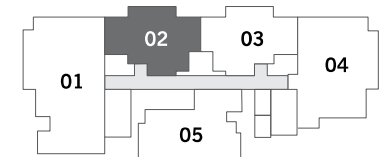
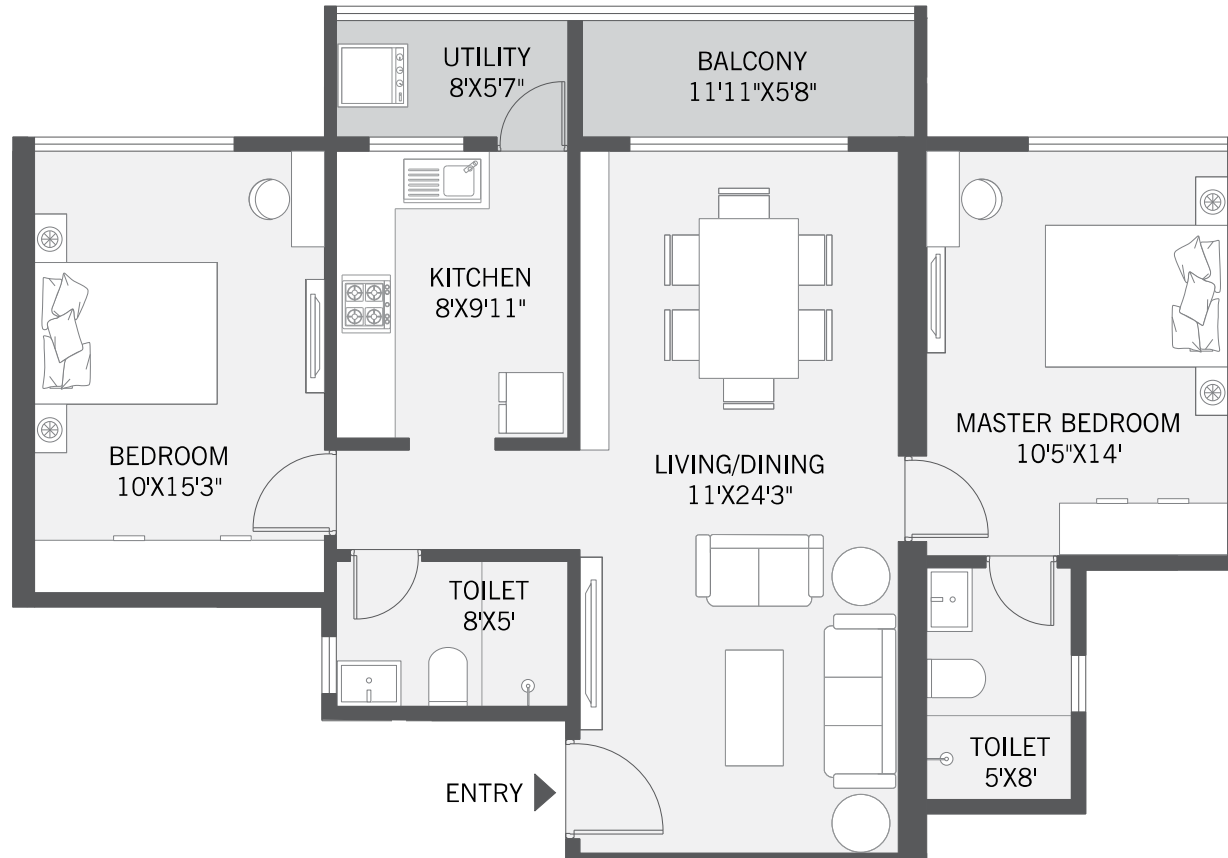
KEY PLAN





# 2 BHK (TYPE 2)

Carpet Area:  
894 Sq.Ft.

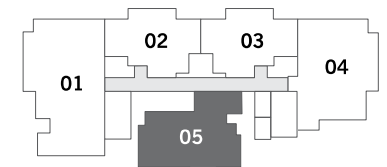
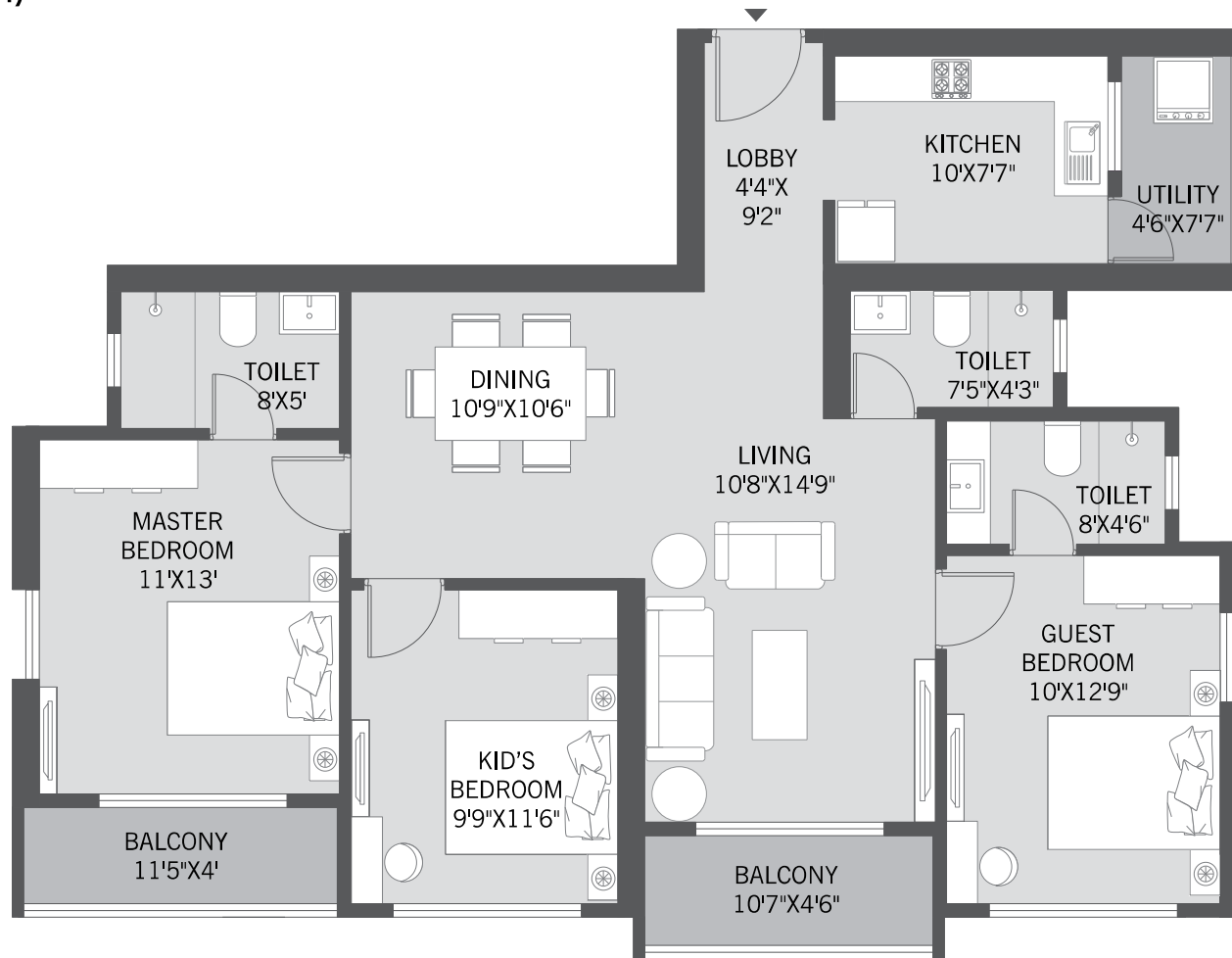


KEY PLAN



# 3 BHK (TYPE 1)

Carpet Area:  
1084 Sq.Ft.

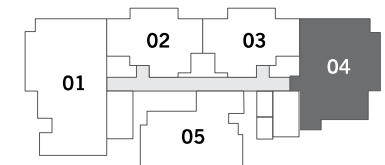
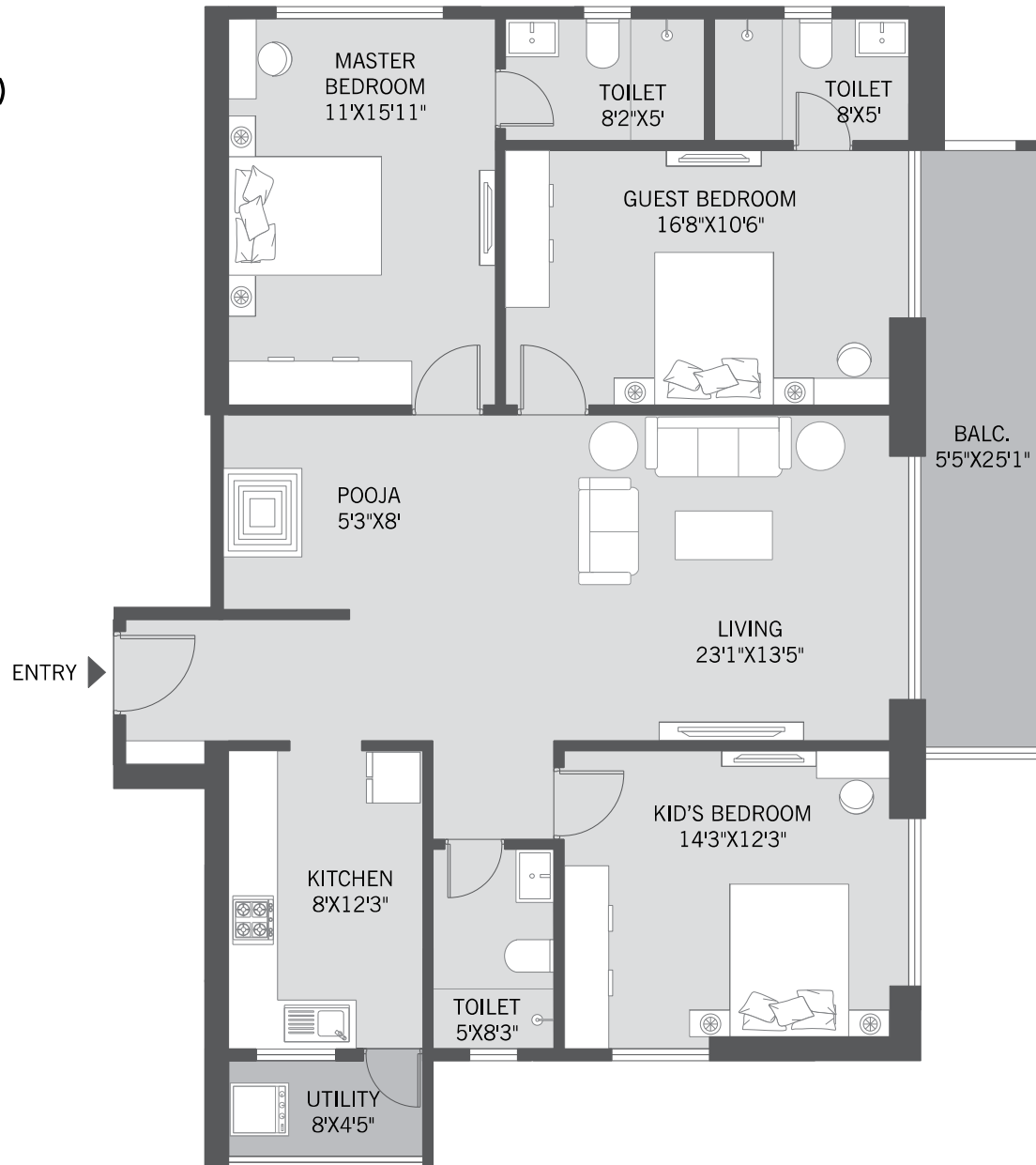


KEY PLAN



# 3 BHK (TYPE 2)

Carpet Area:  
1390 Sq.Ft.

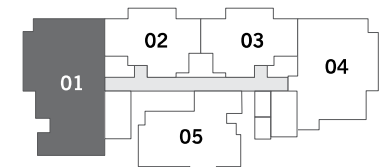
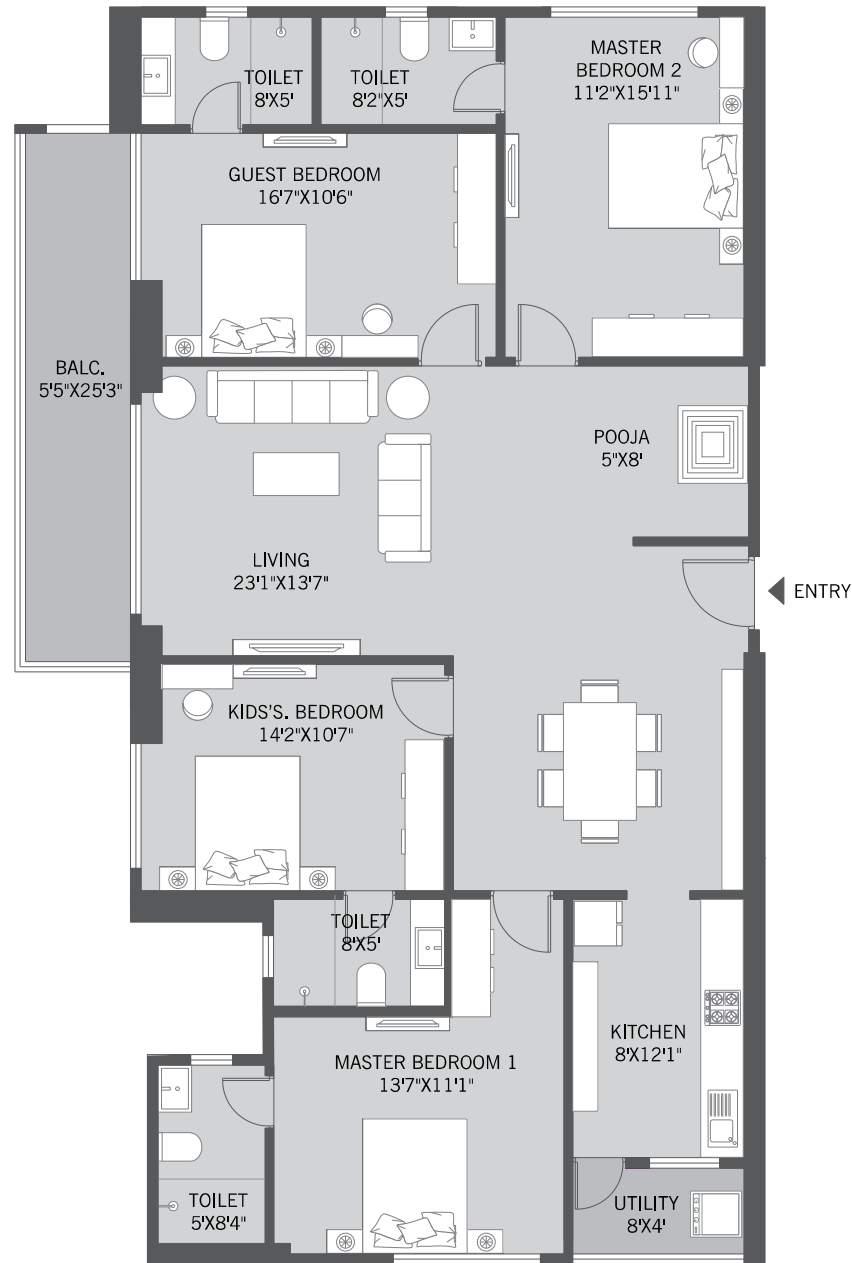


KEY PLAN



# 4 BHK (TYPE 1)

Carpet Area:  
1725 Sq.Ft.



KEY PLAN





---

## RECREATIONAL FLOOR

- 1. Amphitheatre
- 2. Library
- 3. Changing Rooms
- 4. Gaming Lounge

- 5. Music Room
- 6. Indoor Game Hall
- 7. Gymnasium



# A MARVELLOUS ARRAY OF FACILITIES



Artistic Impression



---

Alu-form  
Technology



---

AC Gymnasium



---

Piped Gas  
Provision



---

Double-height  
Entrance Lobby



---

LED Lights in  
Common Areas



---

Designer  
Entrance Lobby



---

Concierge Desk  
in Lobby



---

AC Recreation  
Zone



---

Energy Efficient  
Fittings



---

Restrooms for  
Drivers & Servants



---

AC  
Cafeteria



---

Fire Staircase &  
Refuge Area



---

Landscaped  
Greens



---

Accessible  
Facilities for  
Specially Abled



---

Multipurpose  
Active Zone



---

AC Music  
Room



---

AC Conference  
Room & Library



---

AC Gaming  
Zone







Artistic Impression



**A GRAND ENTRANCE TO  
LUXURIOUS LIFESTYLES**





Artistic Impression



**DOUBLE-HEIGHT  
DESIGNER ENTRANCE LOBBY**





Artistic Impression



**TEMPERATURE CONTROLLED  
SWIMMING POOL**





Artistic Impression



# SPACIOUS MULTIPURPOSE HALL





Artistic Impression



**SERENE  
SEATING AREA**





Artistic Impression



**EXCELLENT  
BASKETBALL COURT**





Artistic Impression



**IMMERSIVE  
GAMING ZONE**



Artistic Impression



**ENERGETIC  
ACTIVITY AREA**





**STATE-OF-THE-ART  
GYMNASIUM**





Artistic Impression

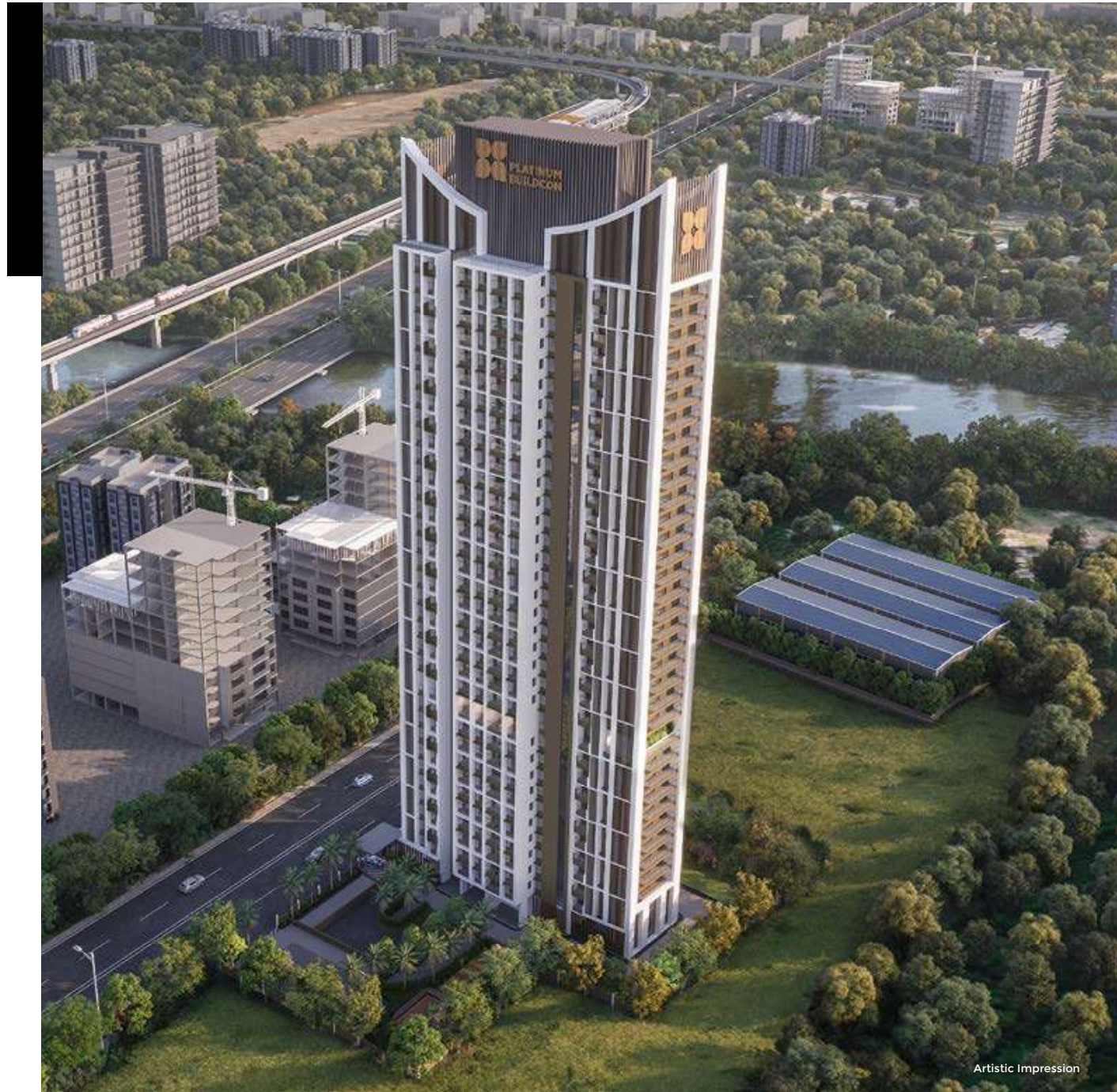


**ENLIGHTENING  
LIBRARY SPACE**





AN OASIS IN THE  
SKY



Artistic Impression