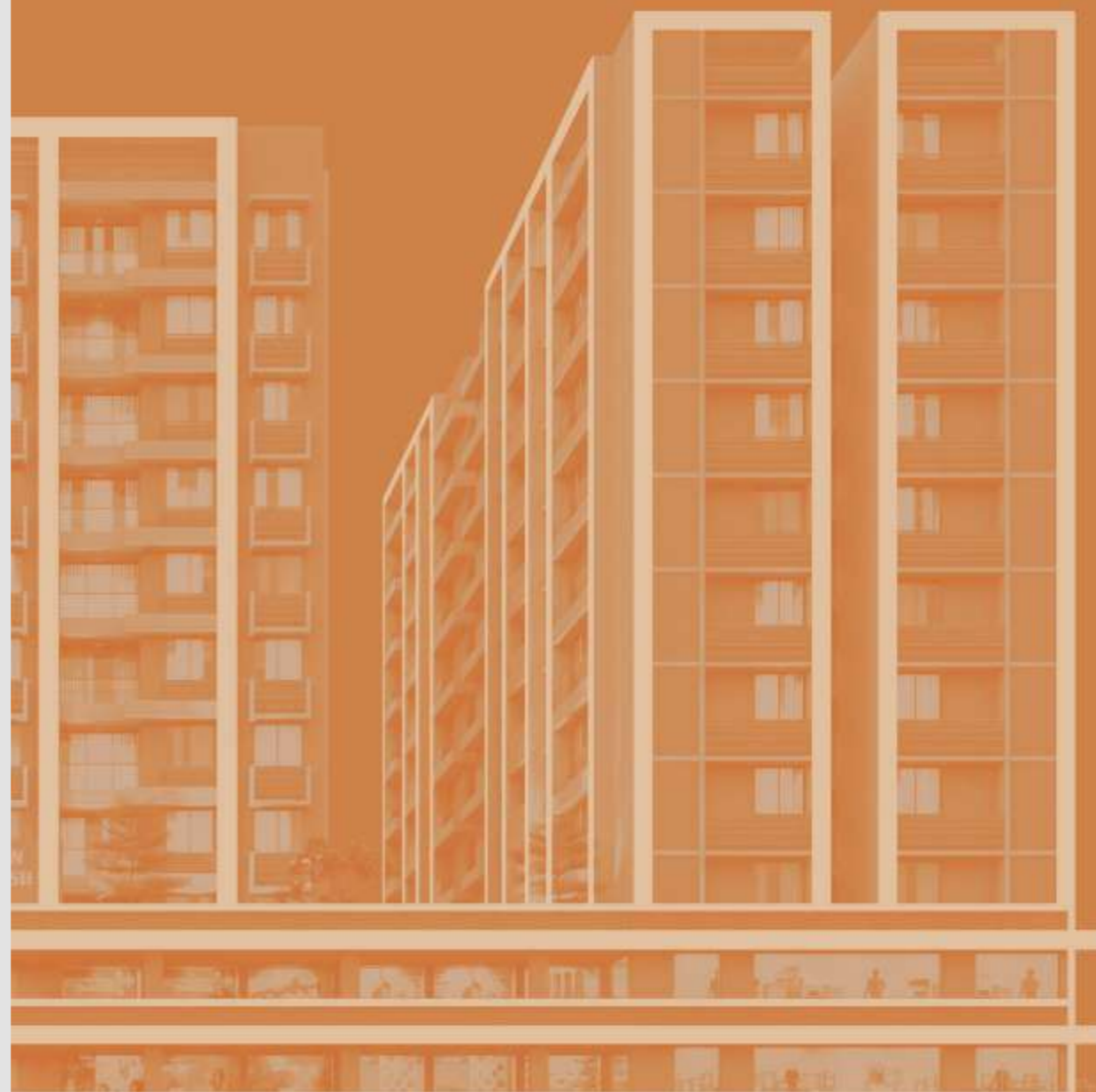


an  
*address*  
where you can feel  
proud to be owned

**3 & 2 BHK**  
**ELITE LIVING & RETAILS**



THE LIFESTYLE YOU  
**DESIRE.** NOW  
**WITHIN**  
YOUR REACH

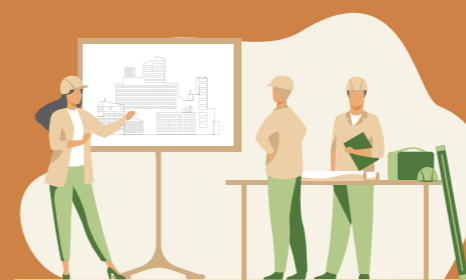


ARYAMAN  
KALPVUKSH



### BOOMING BUSINESS

The whole campus is most prominently covered with prime commercial space with a blend of brands for maximum shopping options.



### AESTHETIC ARCHITECTURE

Finally, a project that beautifully incorporates the elements of elegance and practicality to create a project that emerges as a stunning piece of architecture.

### THE PERFECT ADDRESS

Aryaman Kalpvruksh is a perfect address for those who love to be at the helm of everything with quick connectivity.



### REJUVENATION & RECREATION

Fill the moments with fun, frolic and fitness. With Aryaman Kalpvruksh you will find ample ways to seek happiness.





## A HOME THAT ELEVATES YOUR QUALITY OF LIFE

Just one look at this glorious architecture and you will be persuaded to live here. It's a modern-day utopia where all your dreams come true.

THE FUTURISTIC  
**BUSINESS HUB**  
AWAITS YOU...



Corporates



Bank



Dealer





## COME, EMBRACE THE PRECIOUS JOYS OF LIFE

Life is nothing but a collage of happy memories and this fabulous lifestyle privileges present you with unlimited opportunities to rejoice life.



Security Cabin at Entrance Gate



School Pickup & Drop off Zone



Kid's Play Zone



Pleasant Sit-Out Zone



Bird Feeder



Building Entrance Foyer





## BECAUSE YOUR WISHES ARE OUR COMMAND

Enjoy the indoor games, get refreshed in the multipurpose room, workout at the gym or stroll through lush garden. at Aryaman Kalpvruksh, you feel energized, elated & enthralled every day.



Multipurpose Hall @ G.F



Gymnasium @ F.F



Walking Way



Indoor Games @ G.F



Water Body



Society Estate Office





## LIFE IS A SYMPHONY OF HAPPINESS HERE

Bask in the joy of coming home to brilliantly planned architecture where each and every element has been perfectly created to present you with a dream like majestic living.



BECAUSE EVEN  
**PERFECT  
BUSINESS**  
REQUIRE  
**PERFECT  
PLANNING**



Banquet Hall



Restaurants



Ice Cream  
Parlor



## BEAUTY OF OUTDOORS IS BROUGHT TO YOUR DOORSTEPS

We have taken special consideration of your needs and provided you with the best of amenities and specifications that make your lifestyle more comfortable.



Lush Green Plantation



Mother's Shaded Pavillion



Tree Plantation in Surrounding Area



Exclusively Designed Landscape Garden



Event Lawn



Common Toilet





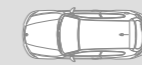
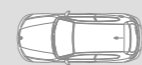
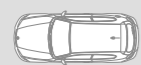
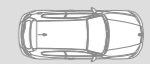
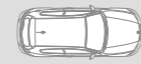
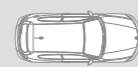
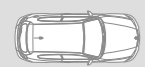




# GROUND FLOOR PLAN

## AMENITIES

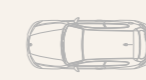
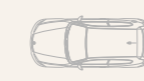
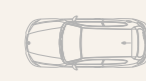
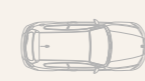
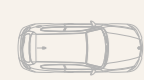
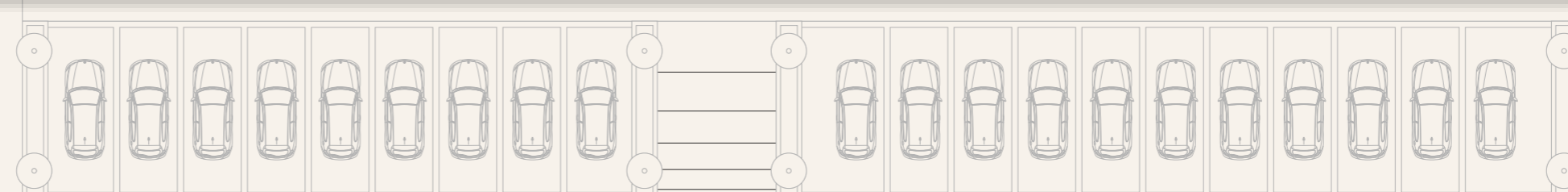
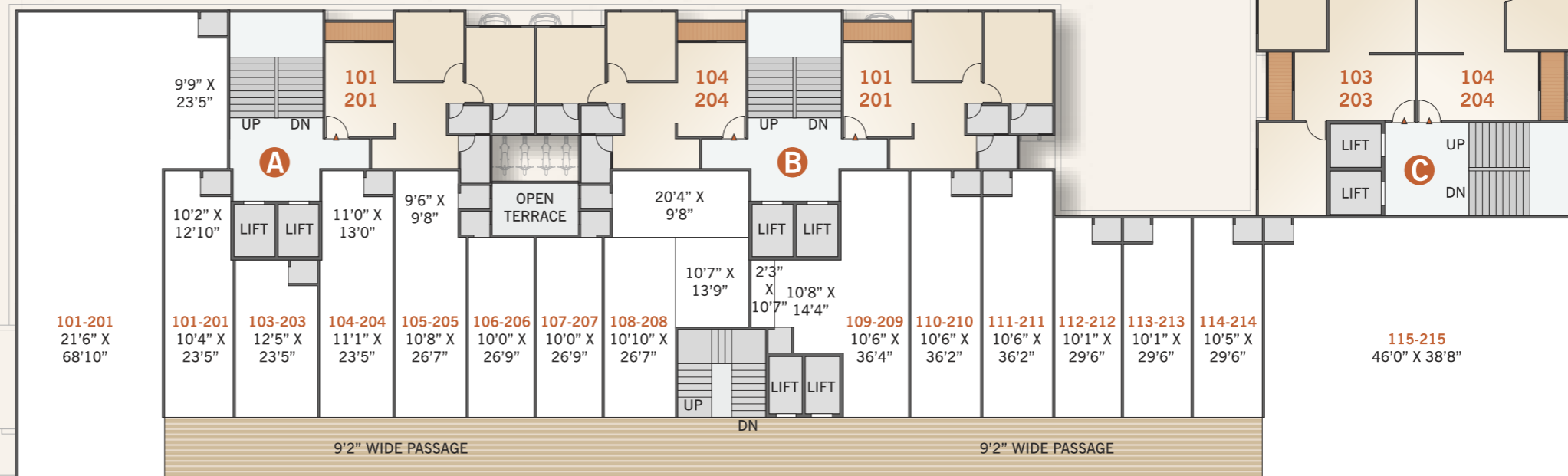
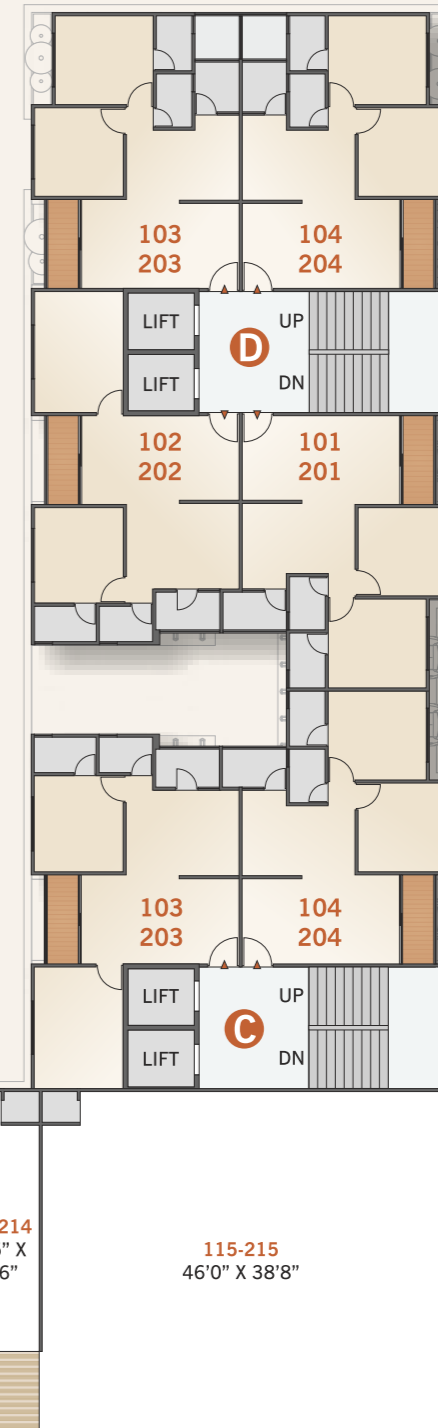
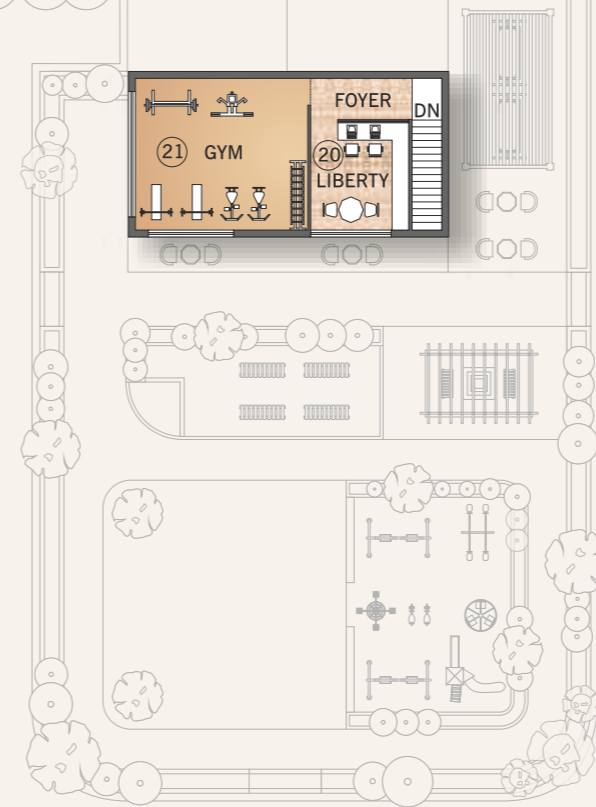
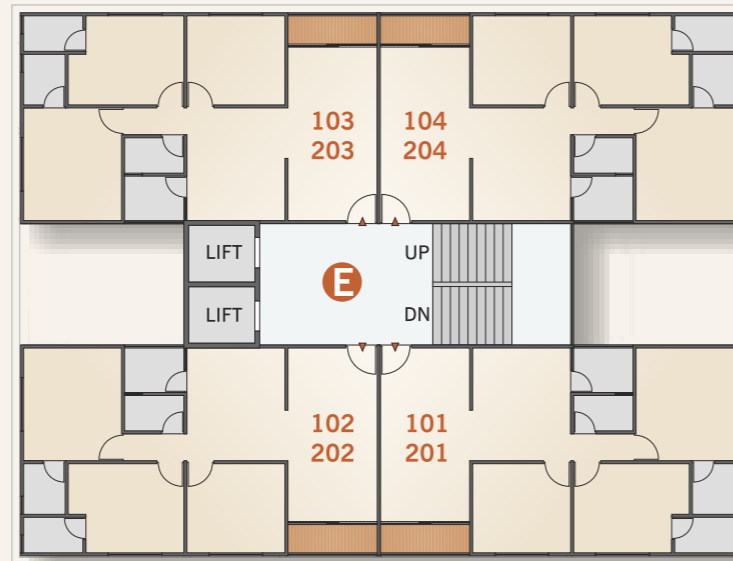
- 01 Residential Epedestrian Entry Gate
- 02 Residential Exit Gate
- 03 Security Cabin
- 04 School Bus Pick up Drop Off Zone
- 05 Common Toilet Block
- 06 Handicap Toilet & Ramp
- 07 Block Entrance Foyer
- 08 Banquet Hall
- 09 Banquet Hall Toilet
- 10 Society Office
- 11 Walkway / Jogging Track
- 12 Garden with Lawn
- 13 Rubburizee Children Play Area
- 14 Senior Citizensitting Area
- 15 Gazebo with Sitting
- 16 Swing Area
- 17 Verandah Area
- 18 Indoor Games
- 19 Toddler Room
- 20 F.F - Library / Work From Home
- 21 F.F - Indoor Gym
- 22 Water Body
- 23 Bird Attracting & Shade Giving Trees On Boundry
- 24 Evergreen Flowering Plants with Decorative Light



## RING ROAD

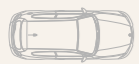
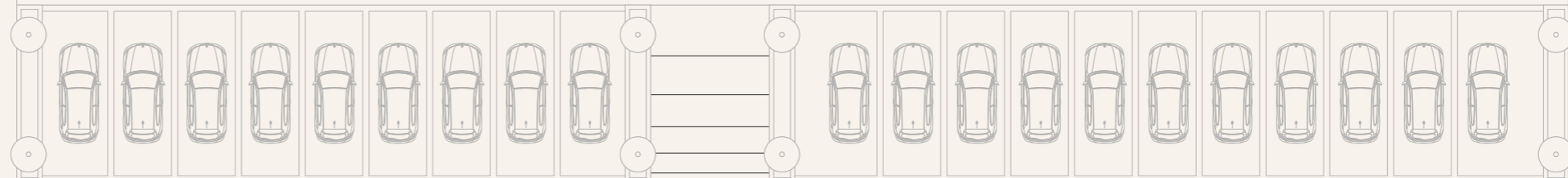
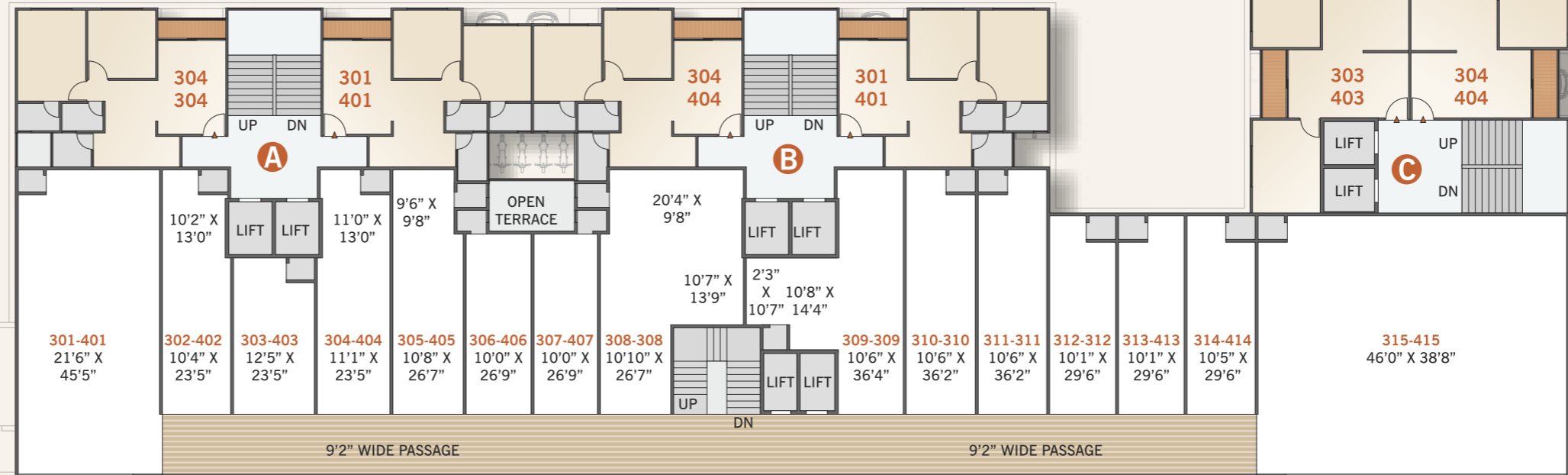
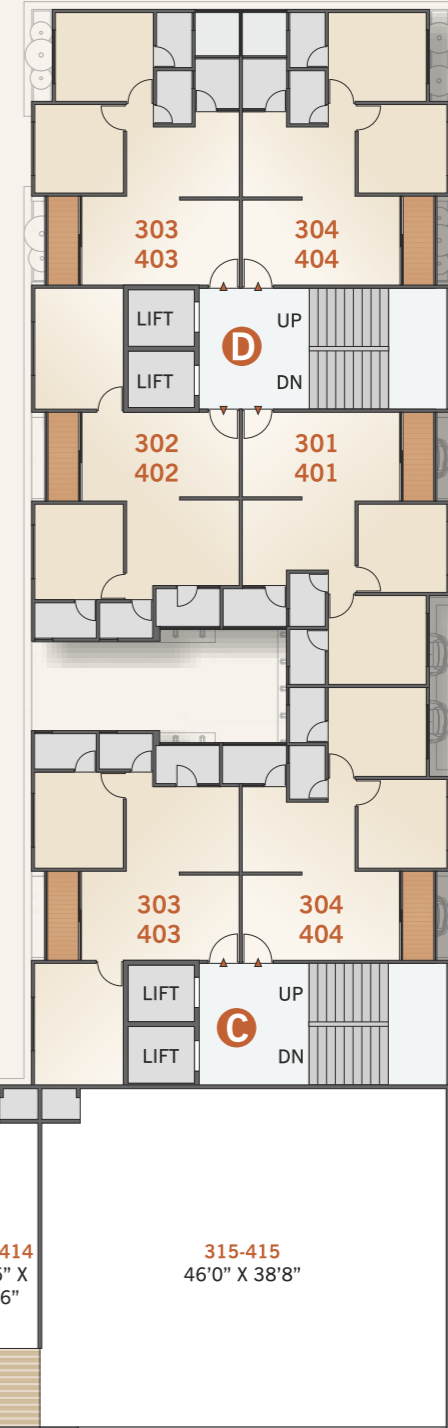
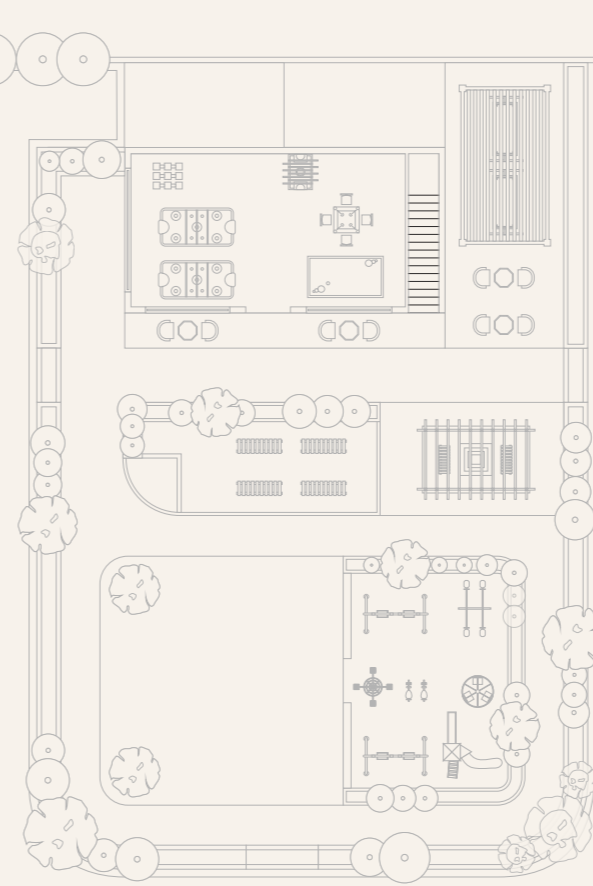
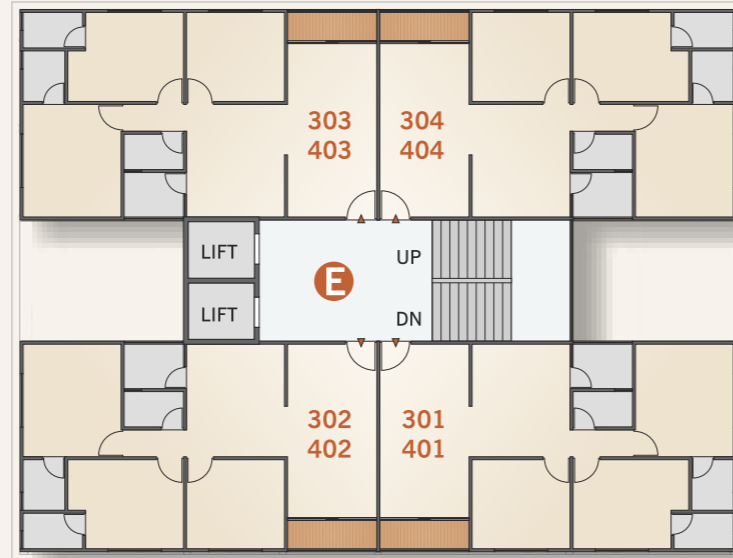


1<sup>ST</sup> & 2<sup>ED</sup>  
FLOOR PLAN



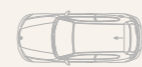
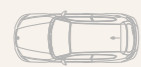
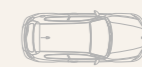
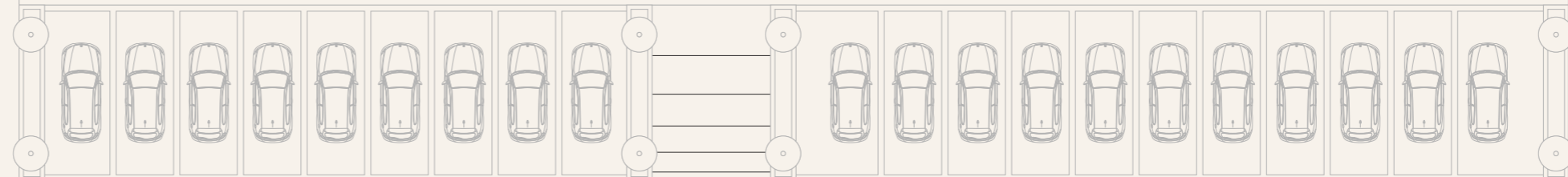
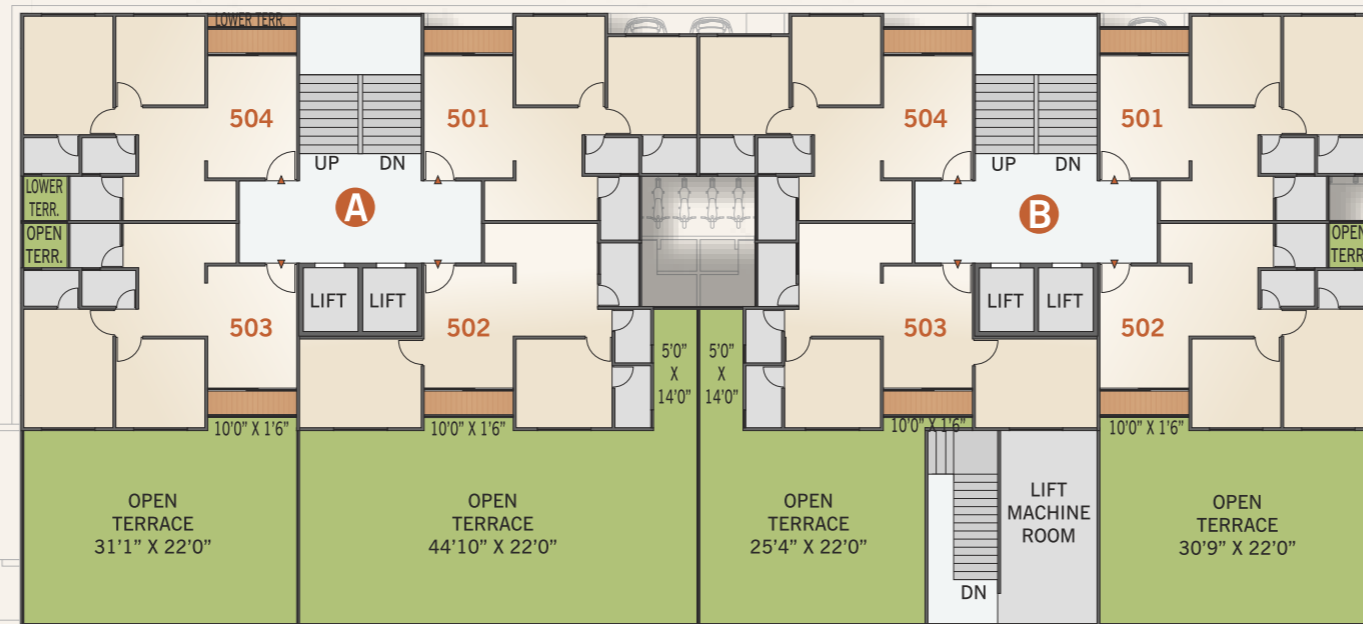
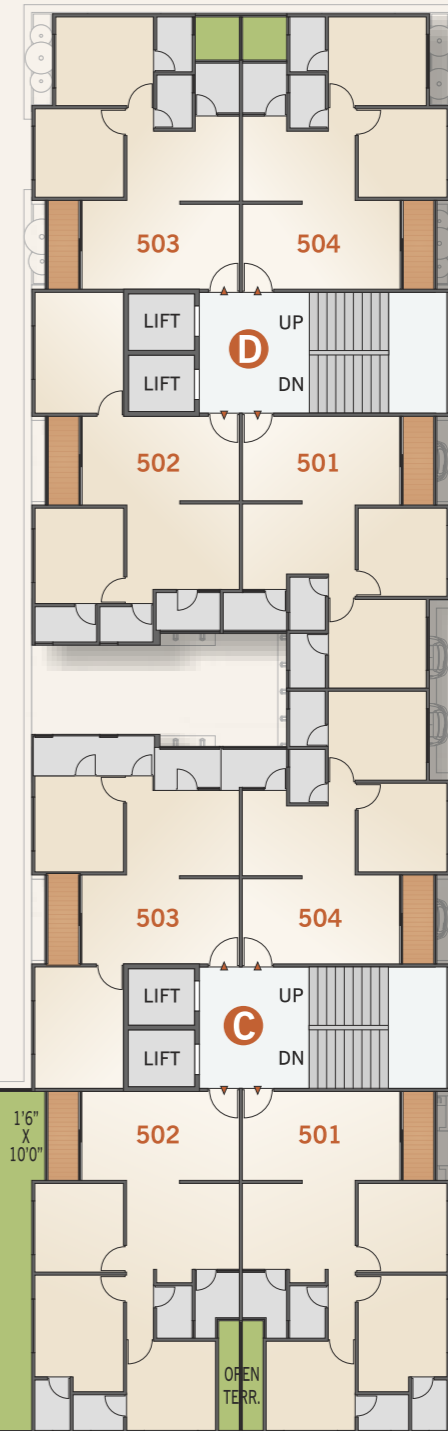
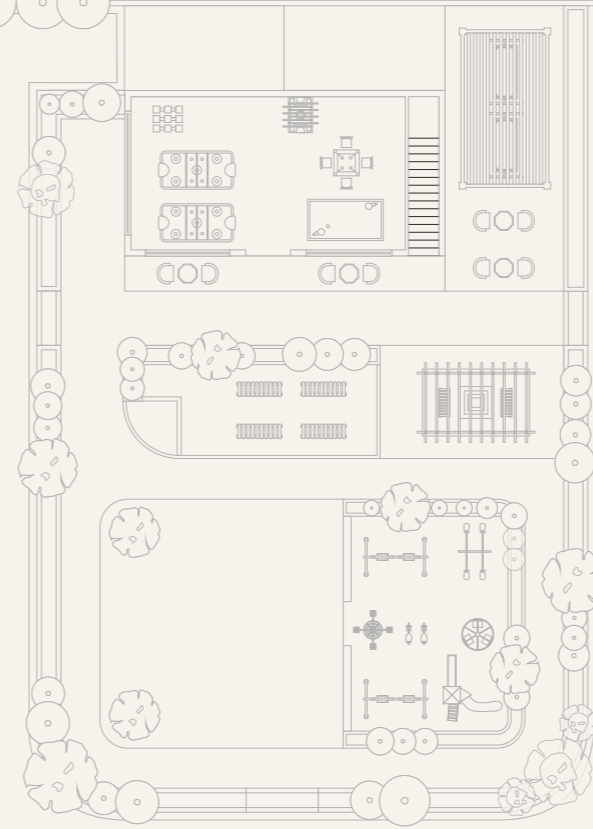
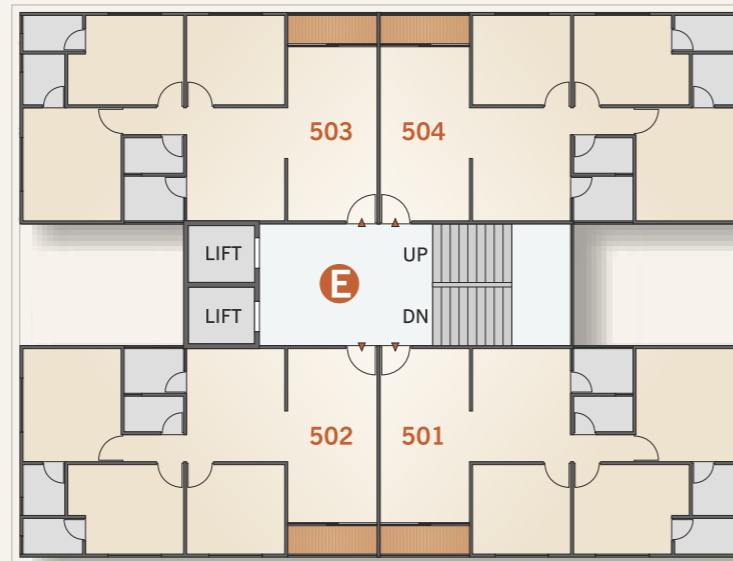


3<sup>RD</sup> & 4<sup>TH</sup>  
FLOOR PLAN



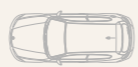
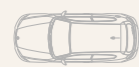
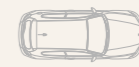
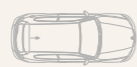
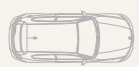
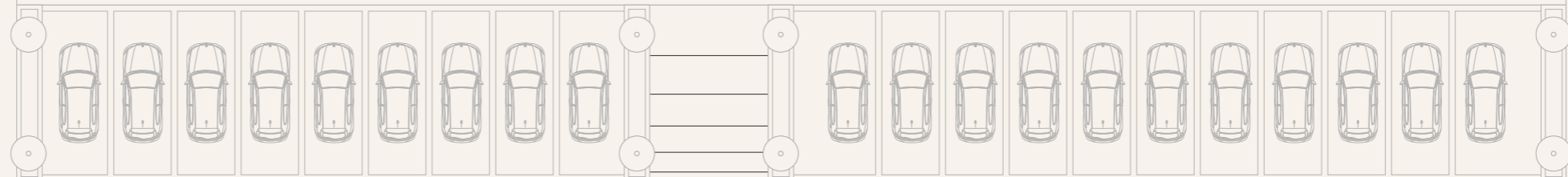
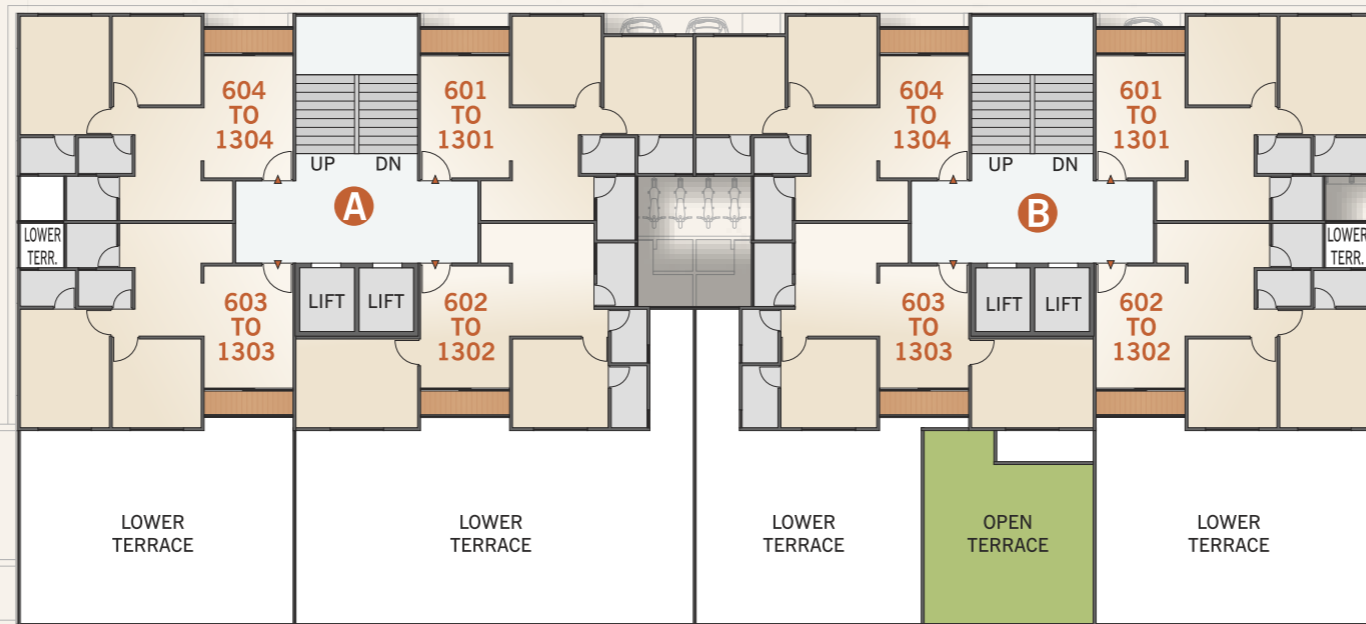
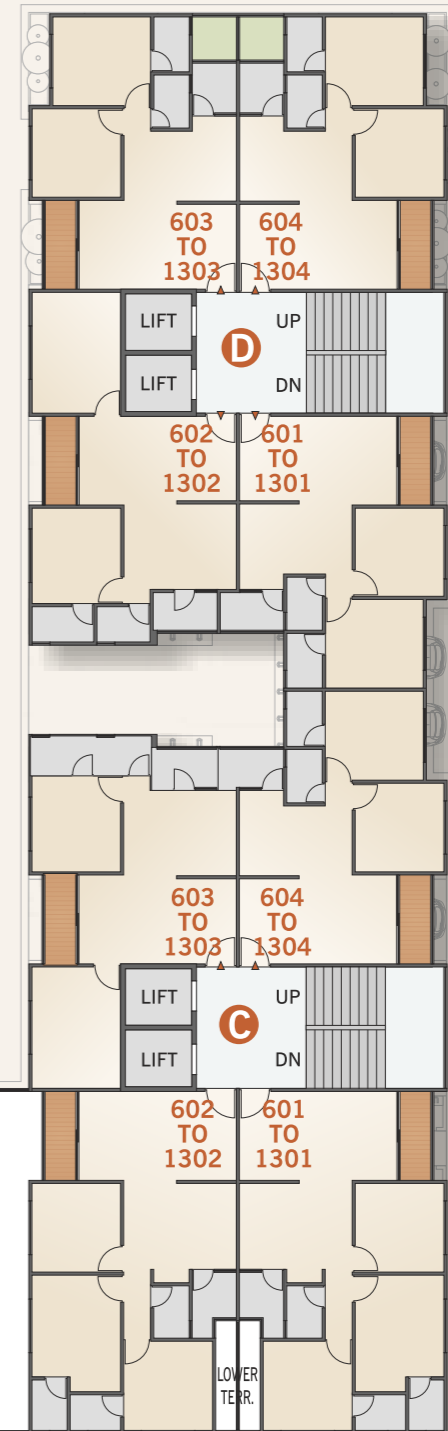
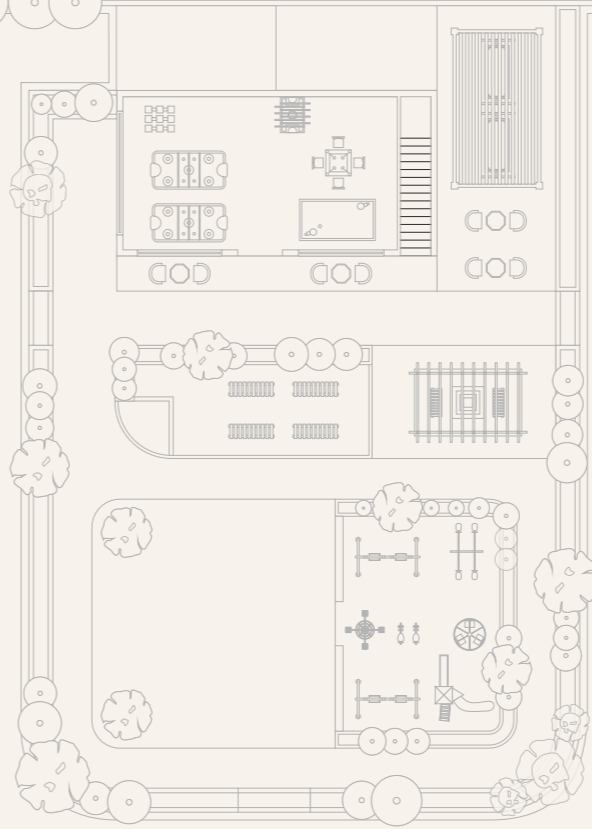
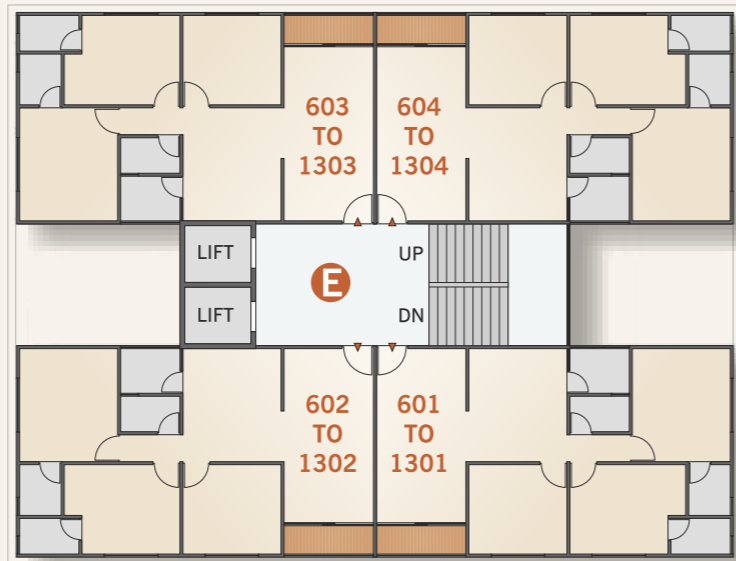


5<sup>TH</sup>  
FLOOR PLAN





TYPICAL  
FLOOR PLAN





**BLOCK - A & B**  
TYPICAL PLAN (5<sup>TH</sup> TO 13<sup>TH</sup> Floor Plan)





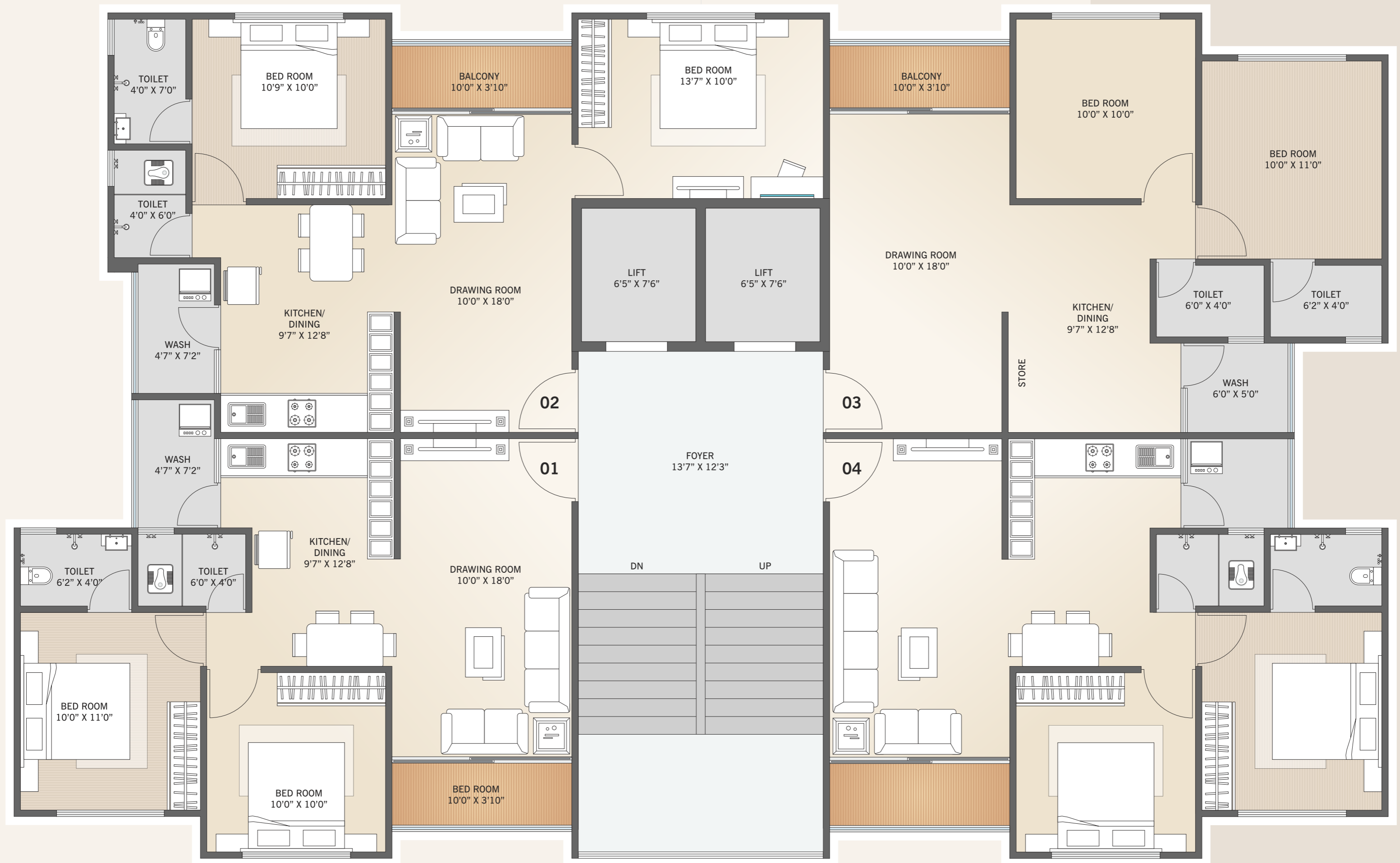
# BLOCK - C

TYPICAL PLAN (5<sup>TH</sup> TO 13<sup>TH</sup> Floor Plan)





**BLOCK - D**  
TYPICAL PLAN (1<sup>ST</sup> TO 13<sup>TH</sup> Floor Plan)





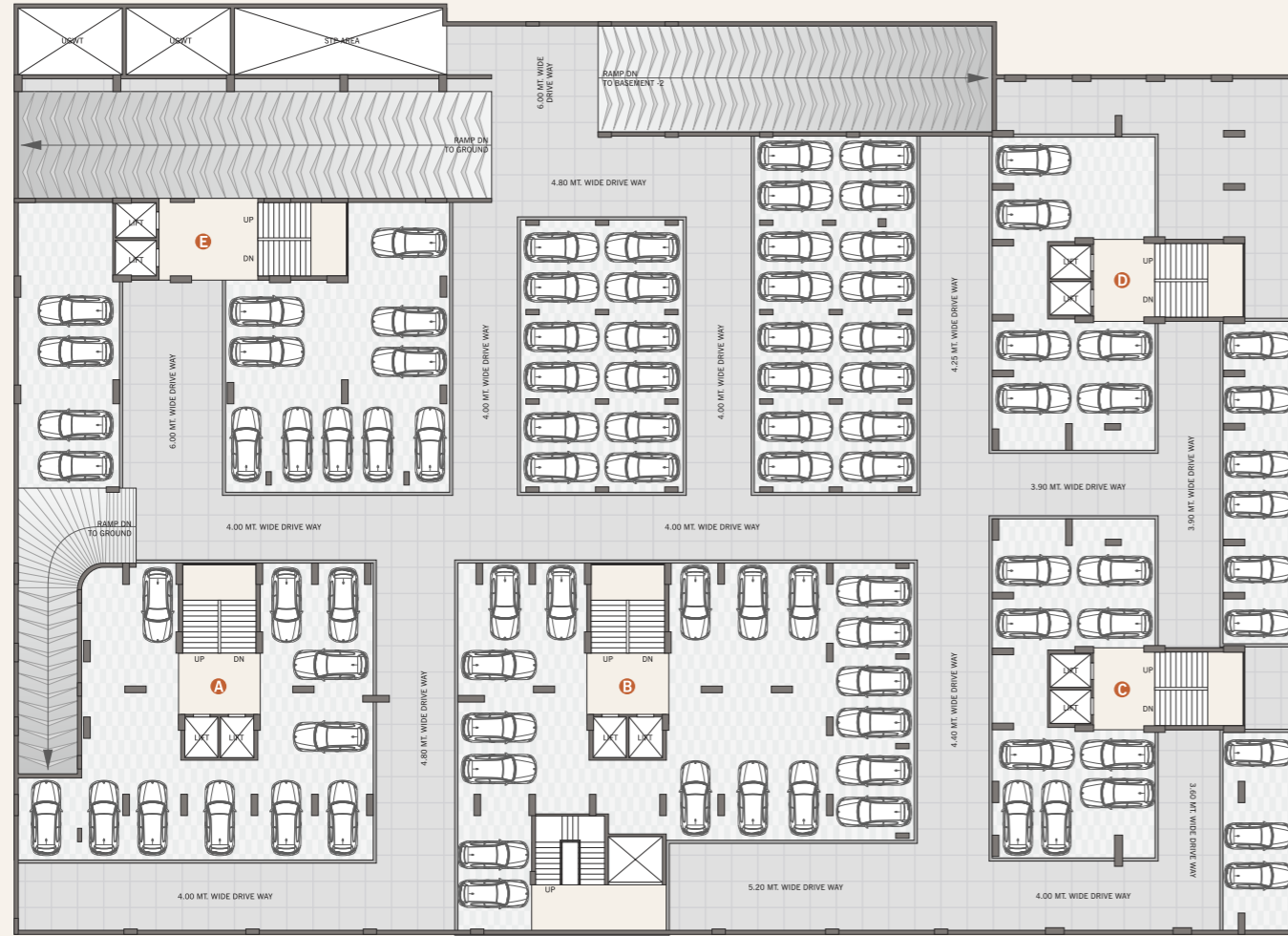


**BLOCK - E**  
TYPICAL PLAN (1<sup>ST</sup> TO 13<sup>TH</sup> Floor Plan)





## UPPER LEVEL BASEMENT PLAN



## LOWER LEVEL BASEMENT PLAN



## SPECIFICATIONS



### FLOORING

Vitrified tiles in all areas.  
Ceramic tiles dado in bathroom up to lintel level.



### INTERIOR PLASTER

Single coat mala.



### EXTERIOR PLASTER

Double coat mala.



### INSIDE FINISH

Putty finish (without primer).



### WINDOW

Sliding aluminum section window.



### KITCHEN

Granite platform with dado of ceramic tiles up to lintel level.  
Stainless steel sink & Anti-skid tiles in wash yard.



### PLUMBING

Jaquar / Cera / Plumb CP fittings.  
Sanitary ware & pipes of branded company.



### OUTSIDE FINISH

Acrylic paint.



### DOOR

Main door - Decorative main door with wooden frame and all doors 8' ft height.  
Internal doors - Flush doors with oil paint.



### ELECTRIC

ISI Makes Modular switches, MCB/ELCB and ISI wires.



### LIFT

2 Premium quality automatic lifts in each block.



## ELEGANCE PERSONIFIED, FOR A LIFE FULL OF BLISS !

Live at the most developed area of @ hatijan, ahmedabad. Such prestigious address puts you amidst the energy of the vibrant city in a residence that anticipates your every desire and elevates your life.

## A GLORIOUS ELEVATION FOR A PROFESSIONAL IMPRESS



Hospital



Medical  
Store



Gym



## PROMINENT LOCATION GLORIOUS ELEVATION

Located in most premium part of the city

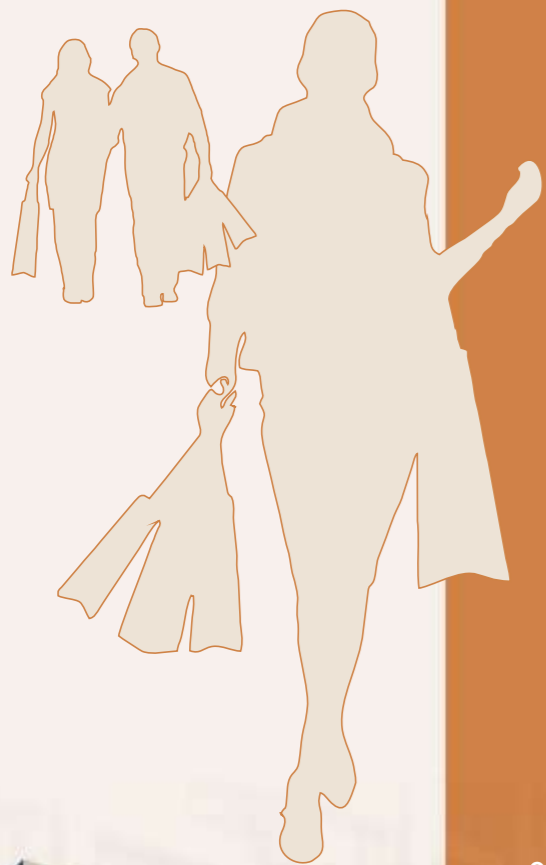


## BUSINESS G+3 RETAILS AND OFFICES



## RETAIL G+2

SHOWROOMS & SHOPS  
Central location, easy connectivity



## LOCATION MAP



## ARYAMAN KALPVUKSH

### DISCLAIMER

The Brochure is for the easy presentation of the Project. It should not be considered as a part of the legal documents. For further information regarding the project, the Member / customer is requested to check the details on RERA website or at the Developer's office before going ahead with the Booking. The Furniture and fixtures, electrical appliances and other loose items shown in the brochure are only for illustrative purposes and do not form a part of the standard product on sale. The furniture layout shown in the brochure is only suggestive and subject to change as per site conditions and as per the instructions of the Project Architect. Developer reserves the Right to make any changes in design, Plans, Specifications, Amenities, Elevation etc. without any prior notice. Such changes would be binding on all the buyers / members. Colour, design, size, quality, pattern of construction materials may change subject to availability. The promoter / Developer reserves the Right to make minor on-site changes during the course of construction and such changes shall be binding on all the members / customers of the project. The dimensions shown in the brochure are approximate and calculated from unfinished surfaces and are rounded off to nearest whole number. The carpet area mentioned is calculated as per the provisions of RERA act with the help of AutoCAD software. The images (interior and exterior views) in the brochure are computer stimulated graphics for representational purpose and are subject to errors and omissions. The images used may be stock images or images based on the architectural plans of the project. They shall not be constructed as actual depictions of the project. The north direction shown in the brochure is approximate and can be erroneous. The member / customer is expected to verify the same personally before going ahead with the booking. The key plan in the brochure is not to scale and does not depict the exact location of the project or the connecting road network or other abutting structures or landmarks. It is only for representation purpose and gives a rough idea about the approximate location of the project. The member / customer is requested to visit the project site and check the physical location of the project and its surroundings before going ahead with the booking. All the Government & Semi Government charges like Stamp duty, Service Tax / GST and any Tax by state or central Government shall be borne by members / customers of the project. Legal documentation charges, TORRENT, PNG gas connection charges, AUDA / AMC, Narmada water charges, advance maintenance shall be borne by the members / customers of the project separately. Changes in elevation shall not be allowed to be done by members / customers of the project. Any additional Liabilities due to change in the by-laws, shall be borne by members / customers of the project. Subject to Ahmedabad Jurisdiction.

### NEARBY CENTERS

S.P. Ring Road	1 min
Petrol Pump	2 min
School	2 min
Hospital	5 min
Temple	6 min
Bus Stop	5 min
Mall	5 min
Multiplex	5 min
Metro Station	10 min
Baroda Ex. High.	10 min
Collage	15 min
Railway Station	30 min
Airport	45 min



Project Build By

Raghuvir  
BUILDCON

ARYAMAN  
KALPVUKSH

Nr. Divine International School,  
Lalgebi Circle, S.P.Ring Road, Hathijan, Ahmedabad-382445  
For Inquiry : +91 63 55 33 79 33, 63 51 22 79 77

Architect



PR/GJ/AHMEDABAD/AHMEDABAD CITY/AUDA/MAA11784/180523  
[www.gujrerar1.gujarat.gov.in](http://www.gujrerar1.gujarat.gov.in)

