

II SHREE MALLINATHAY NAMAH: II



**2 & 3 BHK LUXURIOUS FLATS**



**MANIAR**

**Mallinath Infracon**

*Make Your Dream in Reality*



**DHARMARAJ RESIDENCY**

Nr. Polio Foundation, Jivraj Park, Ahmedabad

**Mobile : +91 93279 21751 / +91 93761 29023**

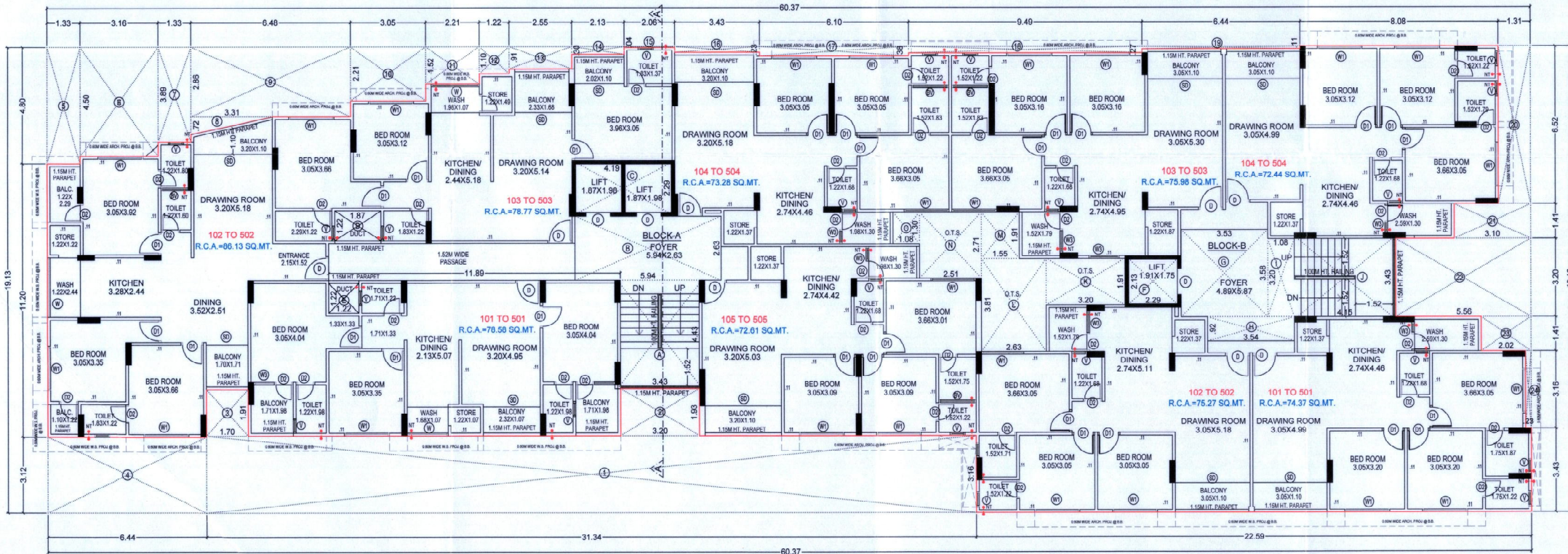




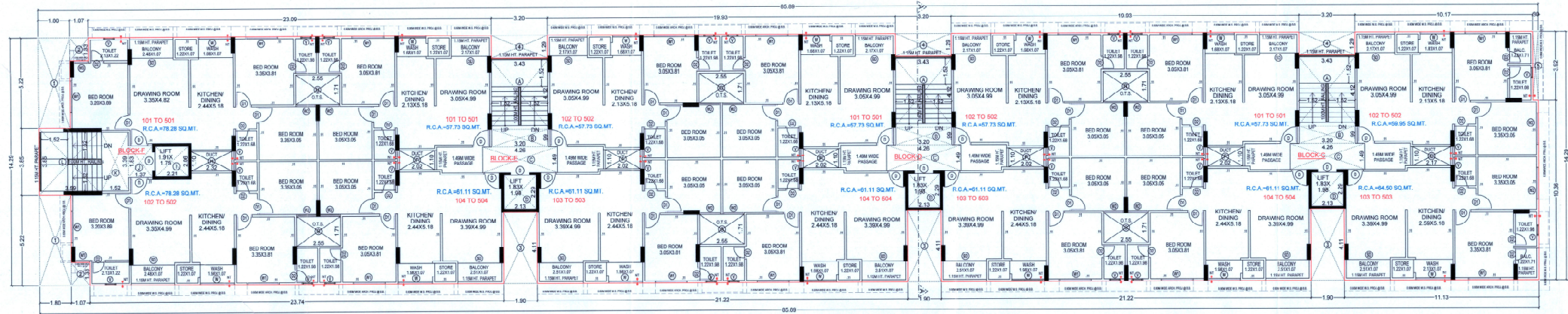




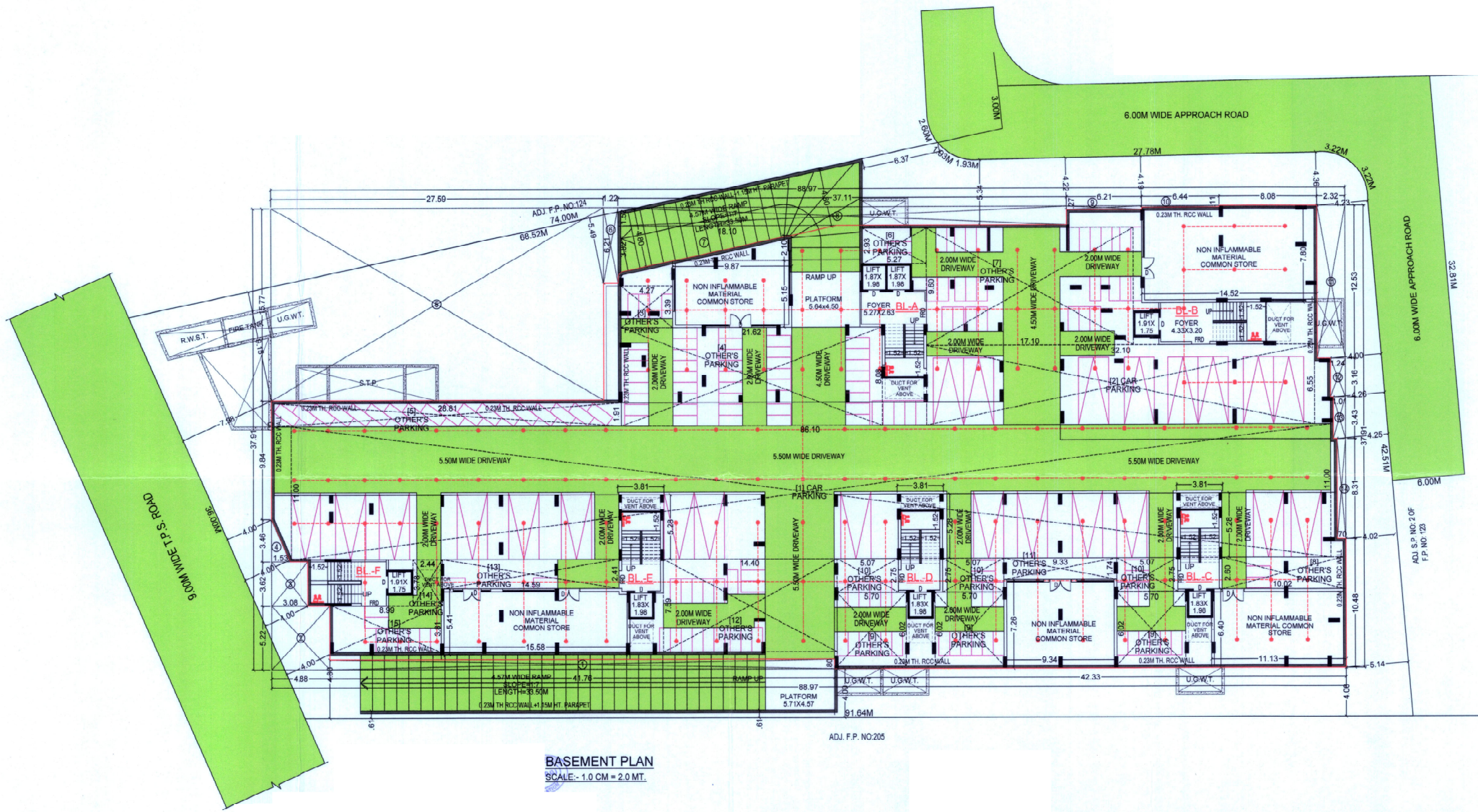
**LAYOUT PLAN**  
 SCALE:- 1.0 CM = 2.0 MT.  
 (NOTE:- SUB PLOT DIMENSION GIVEN AS PER ZONE OPINION.)



1ST TO 5TH FLOOR PLAN



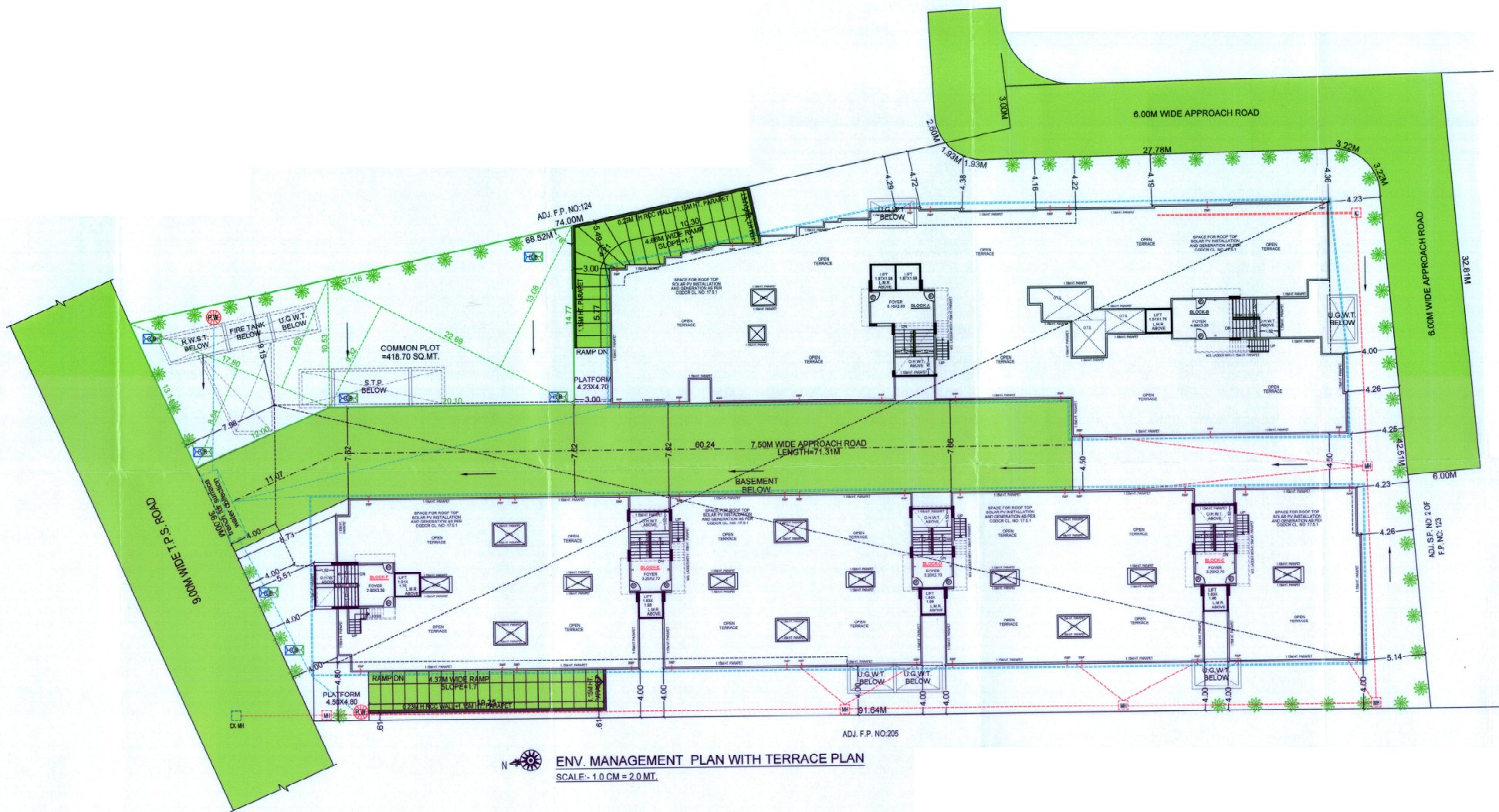
1ST TO 5TH FLOOR PLAN



**BASEMENT PLAN**  
 SCALE:- 1.0 CM = 2.0 MT.

ADJ. F.P. NO.205





## **STRUCTURE**

- ❖ Earthquake resistant design
- ❖ Safe and sound quality controlled R.C.C frame structure with best material component
- ❖ Brick masonry for external and internal walls
- ❖ Basement for Ample parking space and amenities

## **Flooring & wall tiling:-**

- ❖ Premium quality vitrified files for Living , dinning , bedroom and kitchen
- ❖ Anti-skid ceramic tiles for Toilet, utility and balcony
- ❖ Natural Indian granite top platform in kitchen with S.S sink
- ❖ Designer tiles up – to lintel lvl Above kitchen platform and toilets
- ❖ China mosaic with water proofing coat in all terrace

## **Door & Windows:-**

- ❖ Decorative main door with wooden frame and safety locks.
- ❖ ALL internal door laminated flash doors with granite frame
- ❖ Superior quality hardware fittings
- ❖ Anodized alluminium sliding windows with glass panels and granite frame

## Electrical work:-

- ❖ 3 Phase concealed ISI copper wiring
- ❖ Distribution board with separate MCB & ELCB
- ❖ ISI marked standard modular switches
- ❖ Sufficient electrical points in all rooms
- ❖ T.V. wiring conduit
- ❖ Broad band net connection conduit

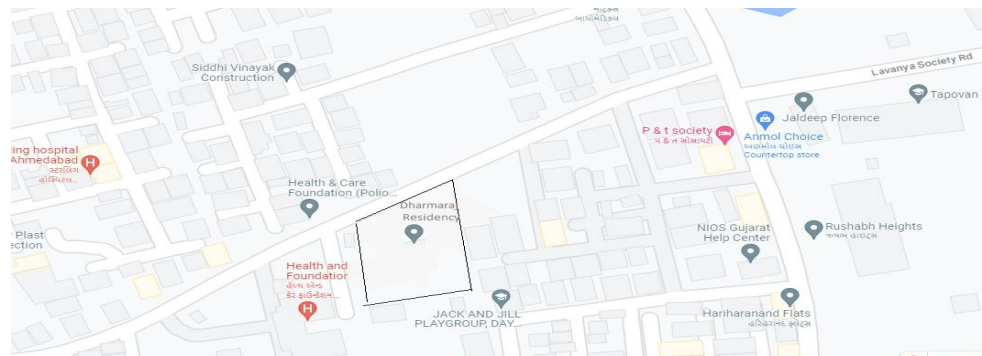
## Wall Paint:

- ❖ Long lasting & weather resistant Acrylic paint on all external textured wall.
- ❖ All internal walls with water resistant smooth cement base putty finish with primer.

## Plumping & sanitation:

- ❖ Premium quality sanitary ware & plumbing fixtures.
- ❖ Premium quality CPVC fittings.

## GOOGLE MAP



## **STRUCTURE ENGINEER**

**Mr. Achal J Parikh**

606/607/608, Sun Square Bldg,  
Nr. Antarim Hotel, X'avier's Corner,  
Off C.G. Road, Ahmedabad-380009.

## **ARCHITECT/ ENGINEER**

Architectural Designer

AMC & AUDA Consultant

**"PRUTHVI"**

**Mr. Haresh H Shah**

220, Ashwamegh Elegance, Bh. Kalyan Jewellers  
Ambawadi, Ahmedabad-380015.