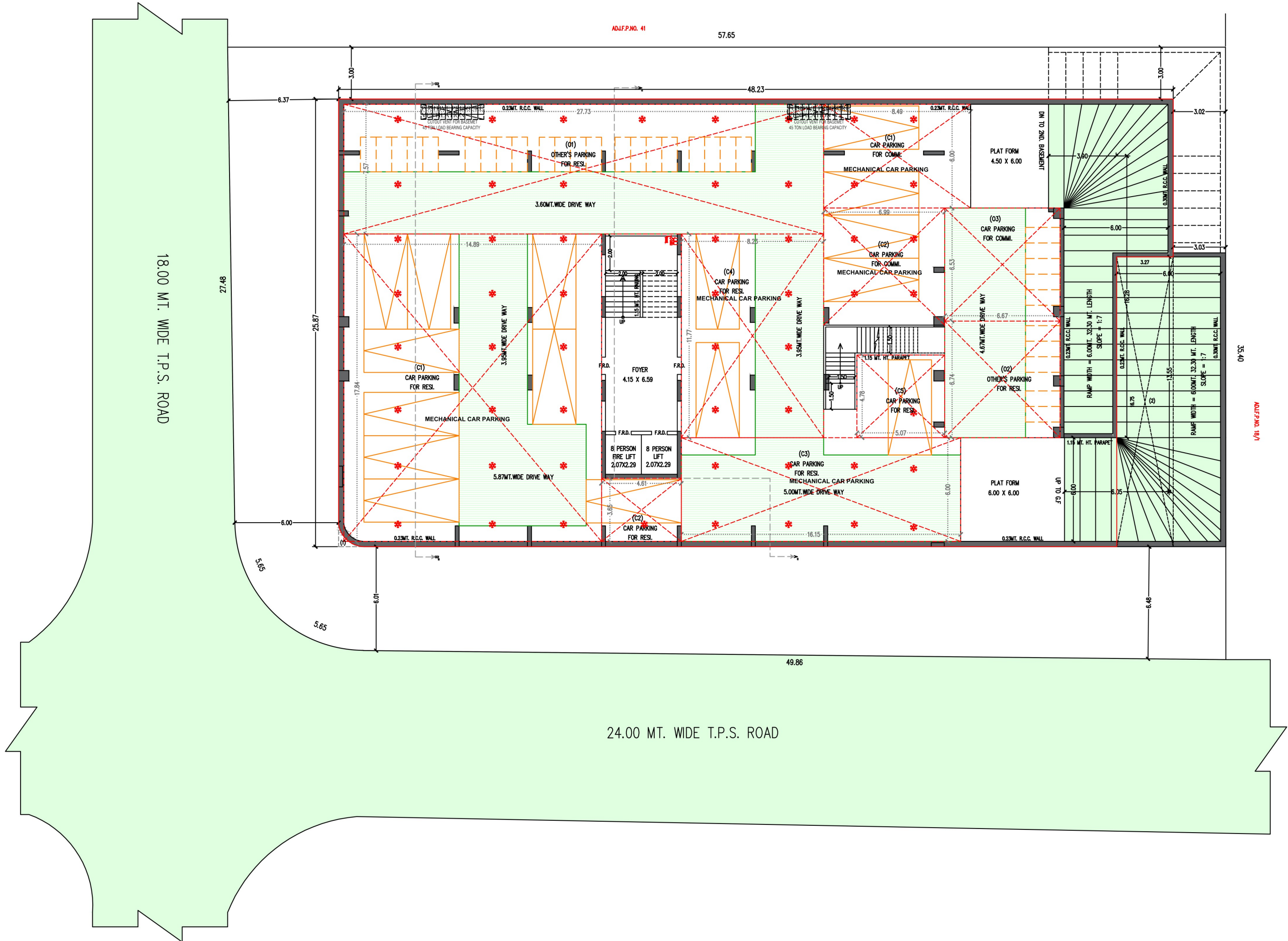


SOLO *Bliss* **II**

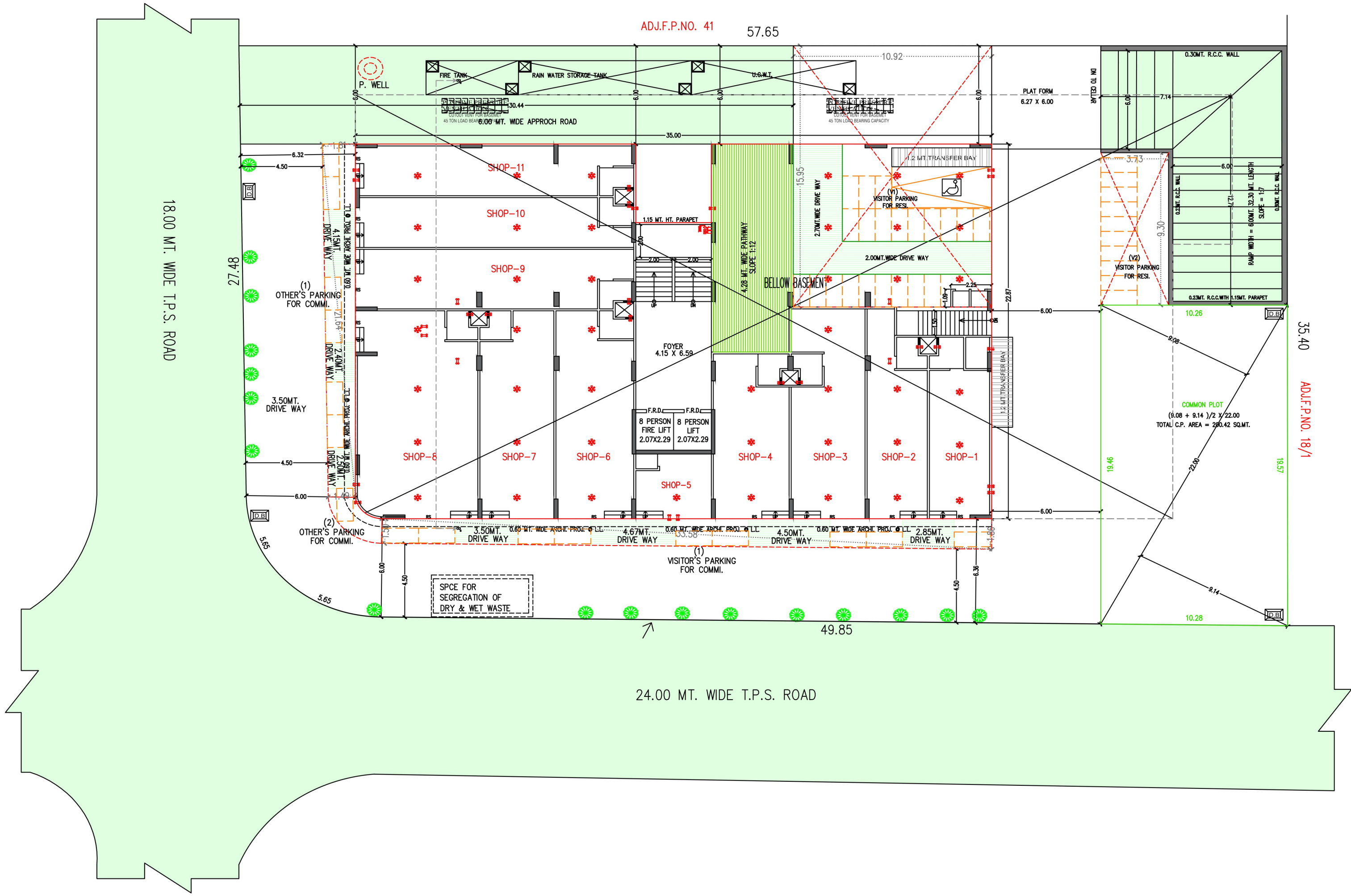




BASEMENT 1



BASEMENT 2



ADJ.F.P.NO. 41 57.65

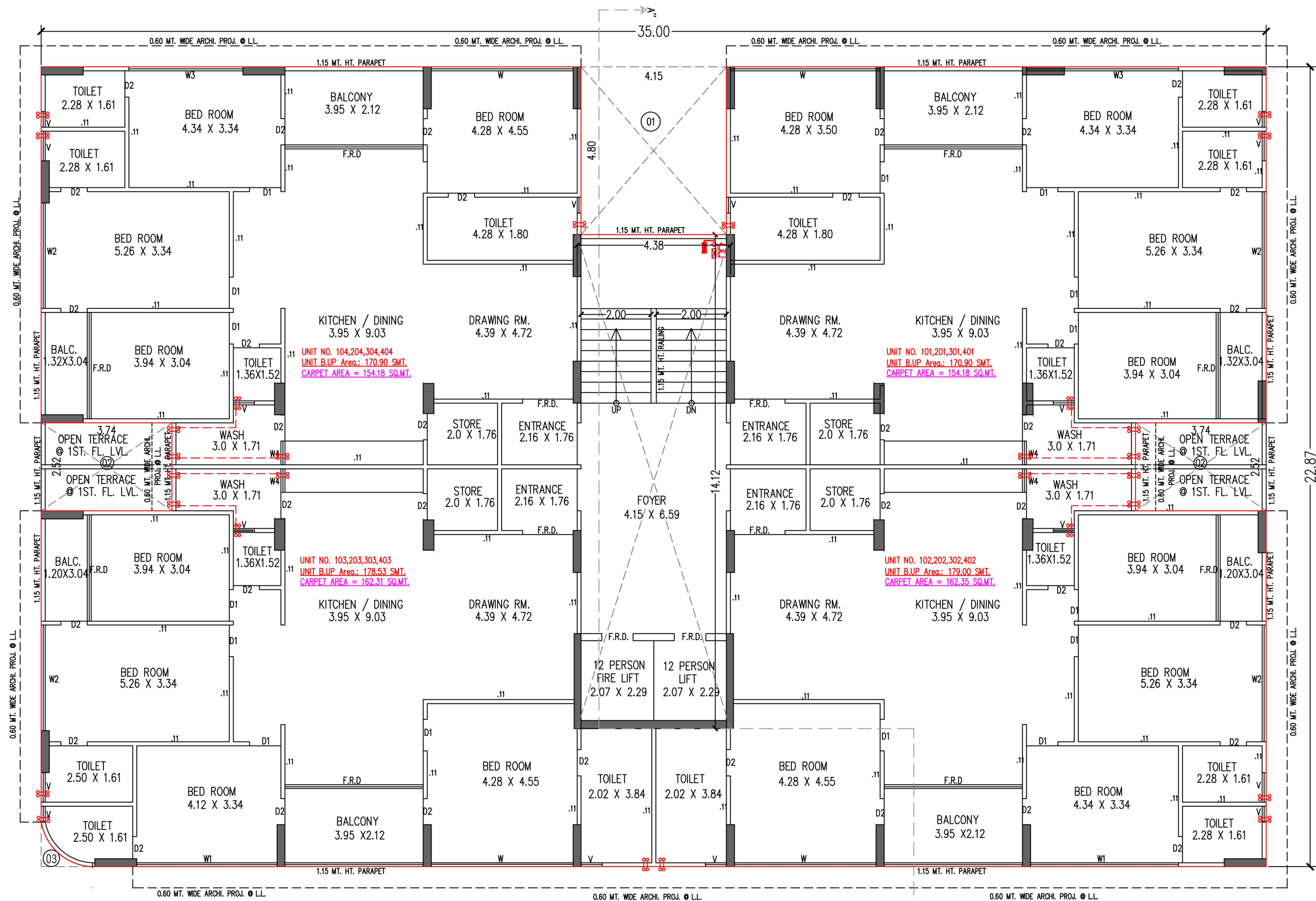
18.00 MT. WIDE T.P.S. ROAD

24.00 MT. WIDE T.P.S. ROAD

GROUND FLOOR

ADJ.F.P.NO. 18/1

COMMON PLOT
 $(9.08 + 9.14) / 2 \times 22.00$
 TOTAL C.P. AREA = 200.42 SQ.MT.



TYPICAL FLOOR

SPECIFICATION

STRUCTURE

- R.C.C. Moment frame structure, seismically resistant adhering to IS-CODE guidelines.

FLOORING

- Vitrified tiles flooring.

KITCHEN

- Granite platform with Stainless Steel sink.
- Glazed tiles dado up to lintel level.
- Provision for R. O. point with required electrical & plumbing point.

BATHROOMS/TOILET

- Anti-skid flooring.
- Glazed tiles dado up to lintel level.
- Quality Bathroom accessories and fittings.

DOORS & WINDOWS

- Laminated flush doors with MS frame.
- Premium quality aluminium section.

WASH AREA

- Anti-skid flooring.
- Provision for washing machine fittings with electrical and plumbing point.

MECHANICAL ELECTRICAL & PLUMBING

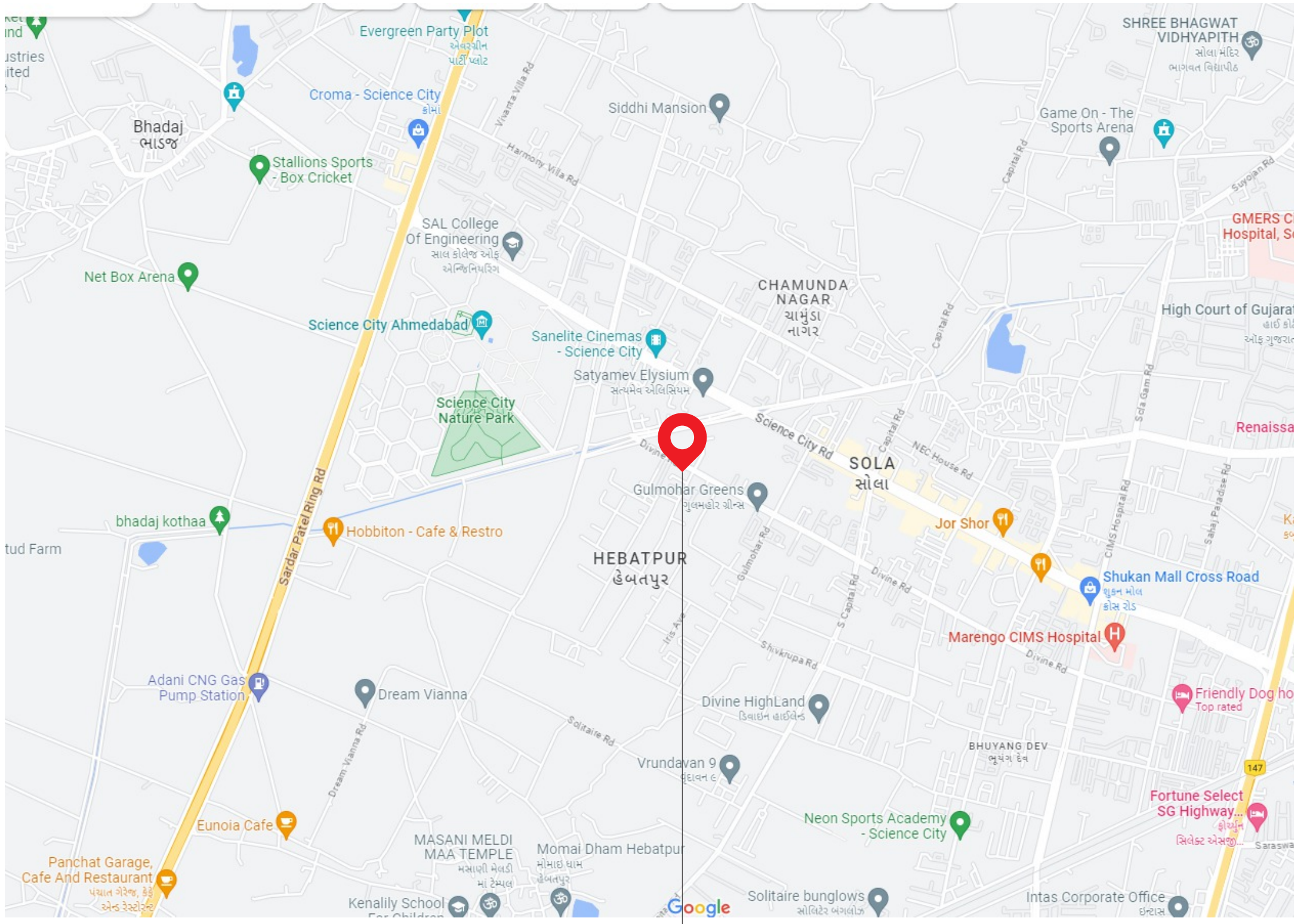
- Concealed copper wiring with M.C.B / E.L.C.B.
- Plenty of electrical sockets with quality switches.
- Quality U.P.V.C. pipes for regular water supply.
- Quality C.P.V.C. pipes for hot water supply.
- Quality P.V.C pipe for drain.

TERRACE

- Open terrace with leak proof floor.

PLASTER & PAINTS

- Inside : Single coat mala plaster with wall putty finish.
- Outside : Double coat mala plaster with texture or exterior paint for attractive elevation.



SOLO Bliss II

SOLO BLISS 2, OPP. 42 PARKVIEW, NEAR SHASHVAT HOMES,
SOLA, AHMEDABAD, GUJARAT 380059

☎ 76005 22800

✉ soloblissghuma@gmail.com

DEVELOPED BY

**SARVAM
BUILDCON**

ARCHITECT

**ARCQUB
DESIGN STUDIO**

STRUCTURE

**BHAVIK PATEL
BLUE SKY**

RERA REGISTER NO.

RERA WEBSITE : WWW.GUJRERA.GUJARAT.GOV.IN