

ruby
ARCADIA
Selaiyur, East Tambaram



More **SPACE.** *More* **GREEN.** *More* **JOY.**



INDULGE IN A SPACIOUS HOME AMIDST STUNNING GREENERY

When it comes to connectivity, Ruby's compact premium apartment community, Ruby Arcadia, scores high. It is located **just 1 km from 150 ft New Agaram bypass road and surrounded by lush greenery. Agaram then is known for its excellent ground water and this ensures good water supply, even during peak summers.** The community is planned with amenities like gym, podium garden and intercom for your convenience, leisure and entertainment. Every home is thoughtfully crafted to be spacious to accommodate everything you love. Efficiently planned to provide cross ventilation, you can be assured of natural breeze and sunlight being a constant. But what makes this project truly irresistible is the affordable price tag it comes with. Come make a site visit and book this dream home!

2 & 3 BHK | 946 - 1370 sq.ft. 78 units 10.9 Acres | Stilt + 5 Floors | 2 Blocks

AMENITIES



MULTIPURPOSE HALL



INDOOR GAMES



PODIUM GARDEN



GYM



**POWER BACK UP FOR COMMON
AREA & FLATS**



24/7 SECURITY WITH CCTV

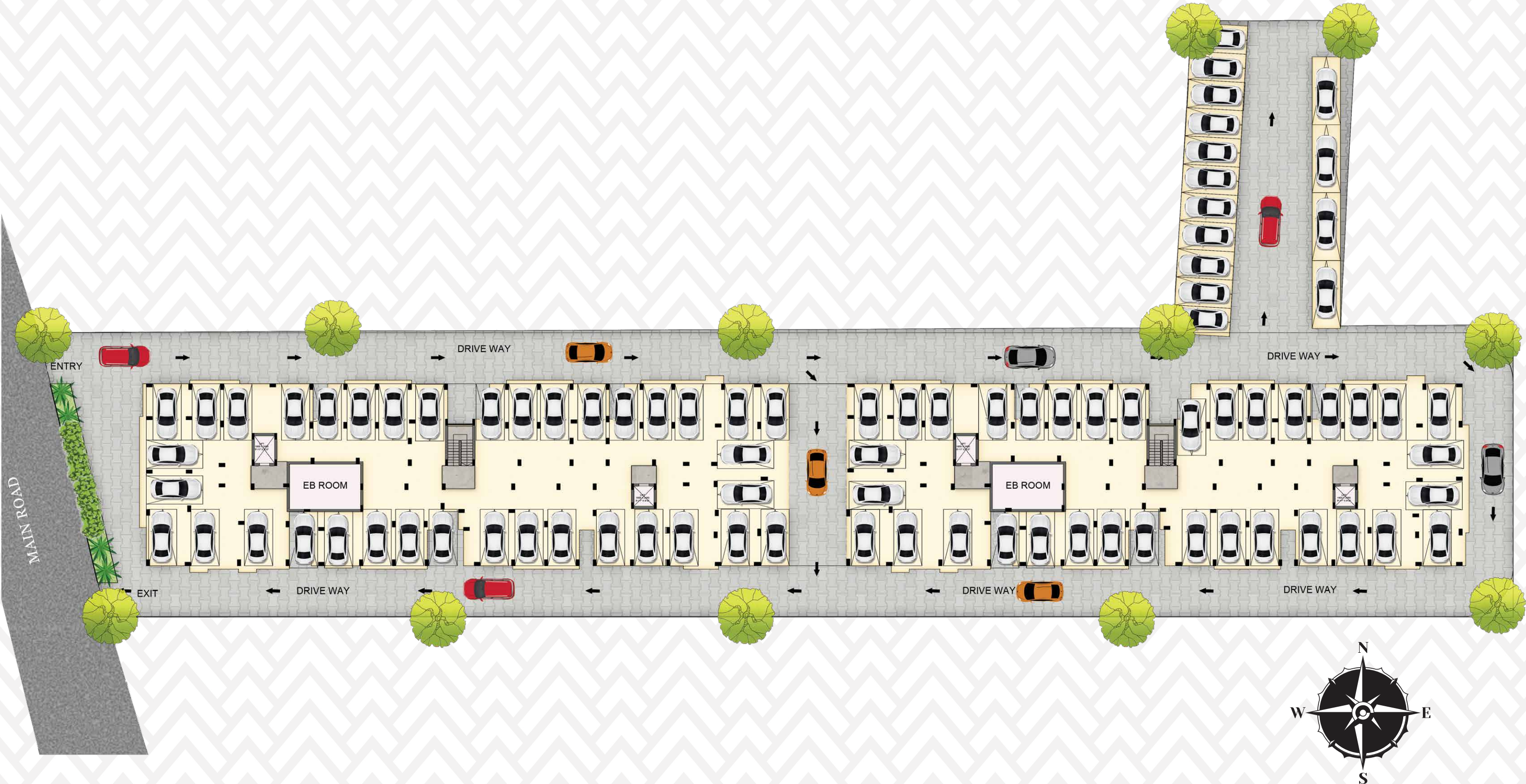


INTERCOM



FLOOR PLANS

BLOCK A & B STILT FLOOR PLAN



BLOCK A & B FIRST FLOOR PLAN



BLOCK A & B TYPICAL (2ND - 5TH) FLOOR PLAN

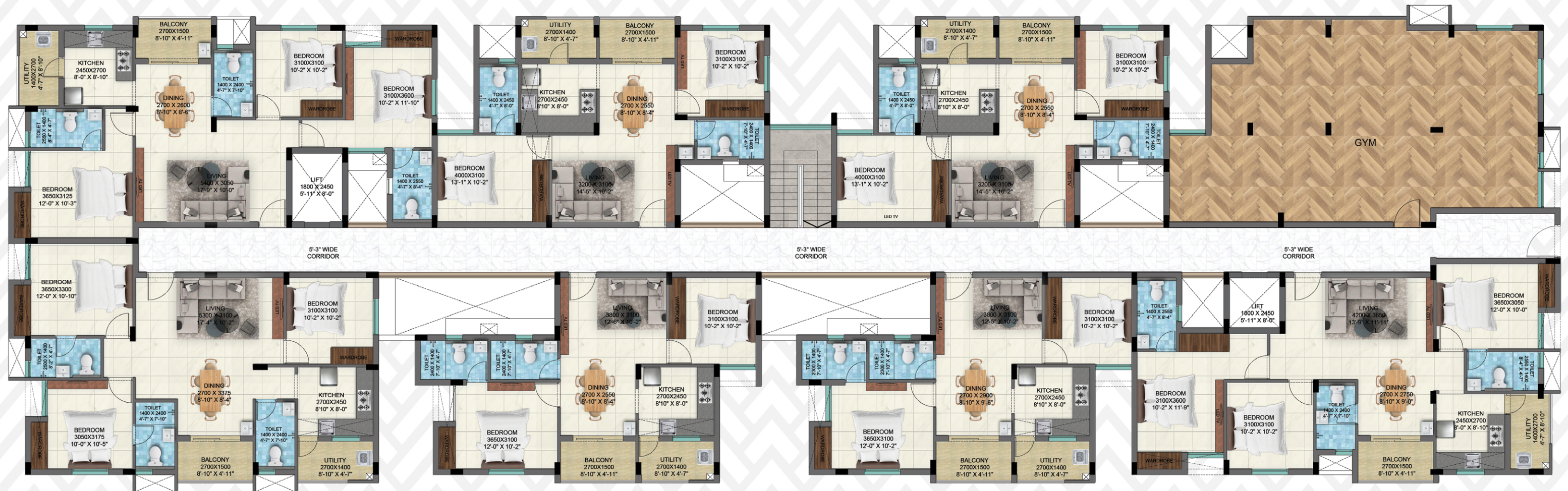


BLOCK A (FIRST FLOOR PLAN)

A1-1 (3BHK)
1347 SQ.FT

A1-2 (2BHK)
982 SQ.FT

A1-3 (2BHK)
986 SQ.FT



A1-7A (3BHK)
1318 SQ.FT

A1-7 (2BHK)
956 SQ.FT

A1-6 (2BHK)
946 SQ.FT

A1-5 (3BHK)
1370 SQ.FT



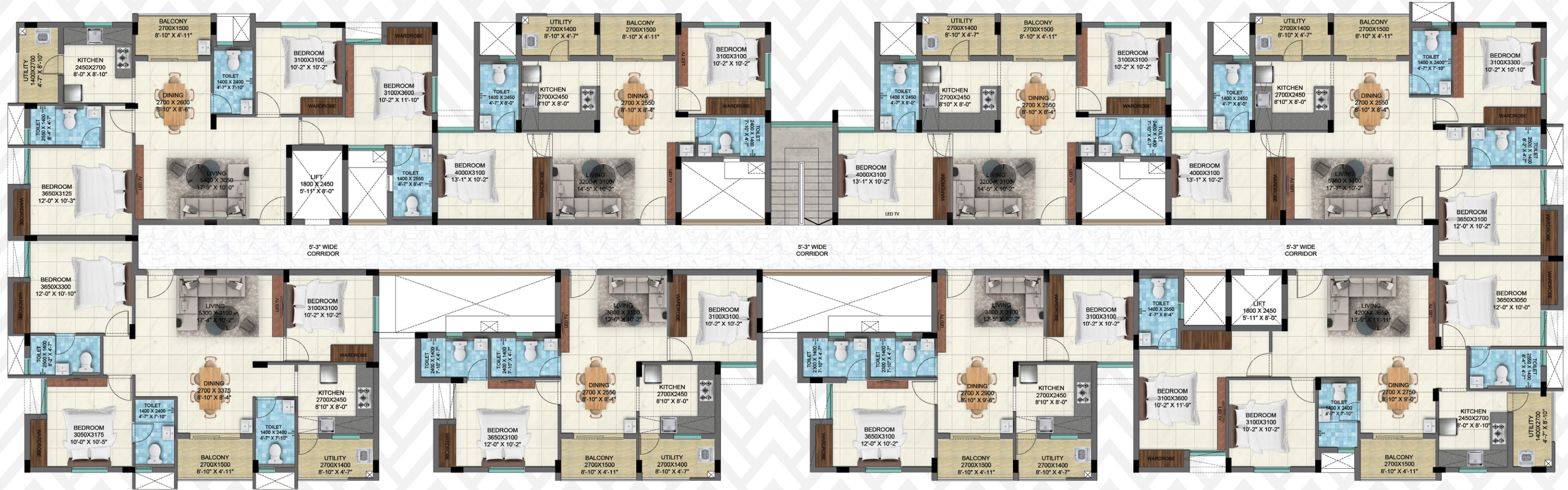
BLOCK A TYPICAL (2ND - 5TH) FLOOR PLAN

A2-1 TO A5-1 (3BHK)
1347 SQ.FT

A2-2 TO A5-2 (2BHK)
982 SQ.FT

A2-3 TO A5-3 (2BHK)
986 SQ.FT

A2-4 TO A5-4 (3BHK)
1314 SQ.FT



A2-7A TO A5-7A (3BHK)
1318 SQ.FT

A2-7 TO A5-7 (2BHK)
956 SQ.FT

A2-6 TO A5-6 (2BHK)
946 SQ.FT

A2-5 TO A5-5 (3BHK)
1364 SQ.FT



BLOCK B (FIRST FLOOR PLAN)

B1-1 (3BHK)
1353 SQ.FT

B1-2 (2BHK)
982 SQ.FT

B1-3 (2BHK)
986 SQ.FT

B1-4 (3BHK)
1314 SQ.FT



B1-7 (2BHK)
956 SQ.FT

B1-6 (2BHK)
946 SQ.FT

B1-5 (3BHK)
1364 SQ.FT



BLOCK B TYPICAL (2ND - 5TH) FLOOR PLANS

B2-1 TO B5-1 (3BHK)
1347 SQ.FT

B2-2 TO B5-2 (2BHK)
982 SQ.FT

B2-3 TO B5-3 (2BHK)
986 SQ.FT

B2-4 TO B5-4 (3BHK)
1314 SQ.FT



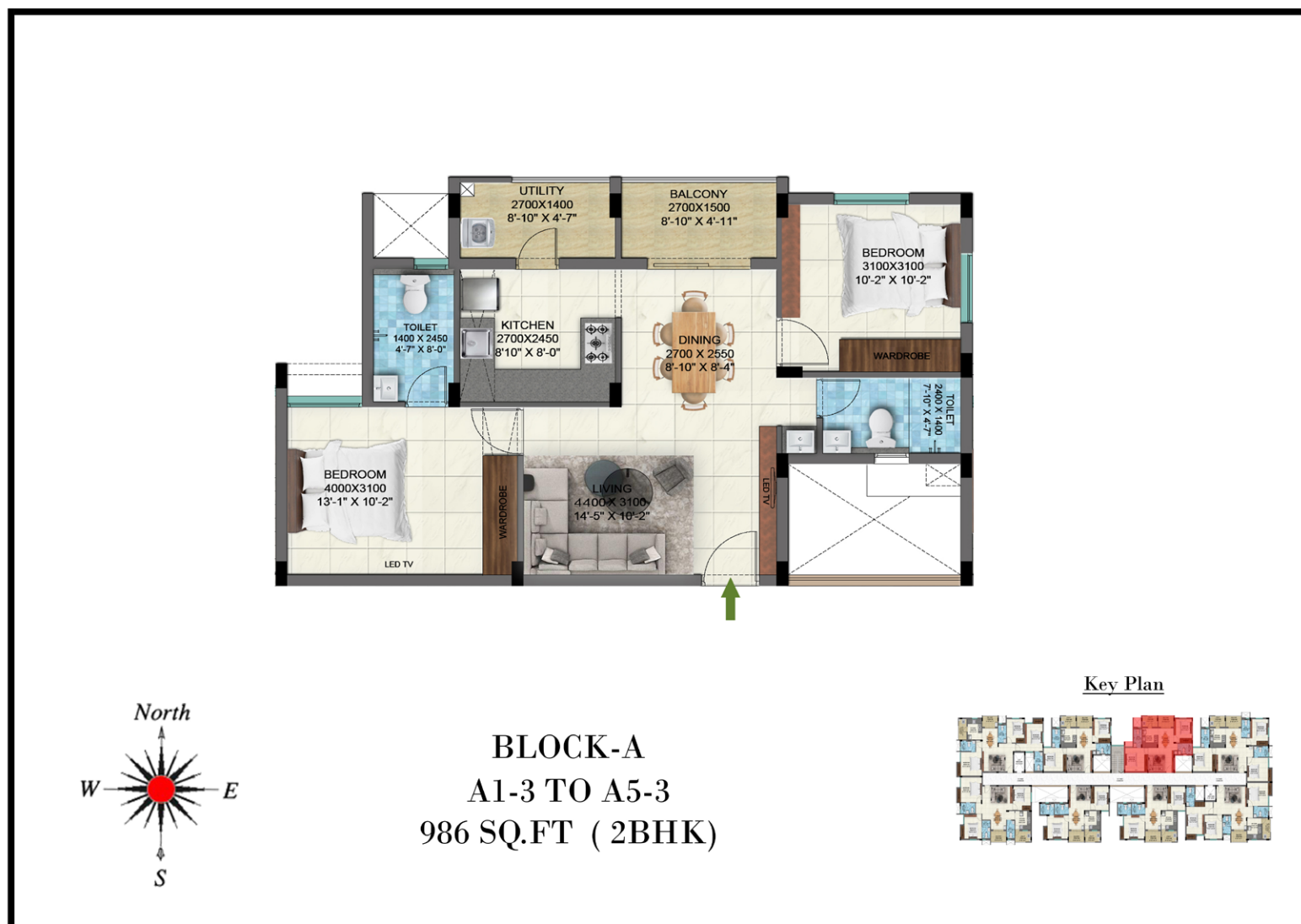
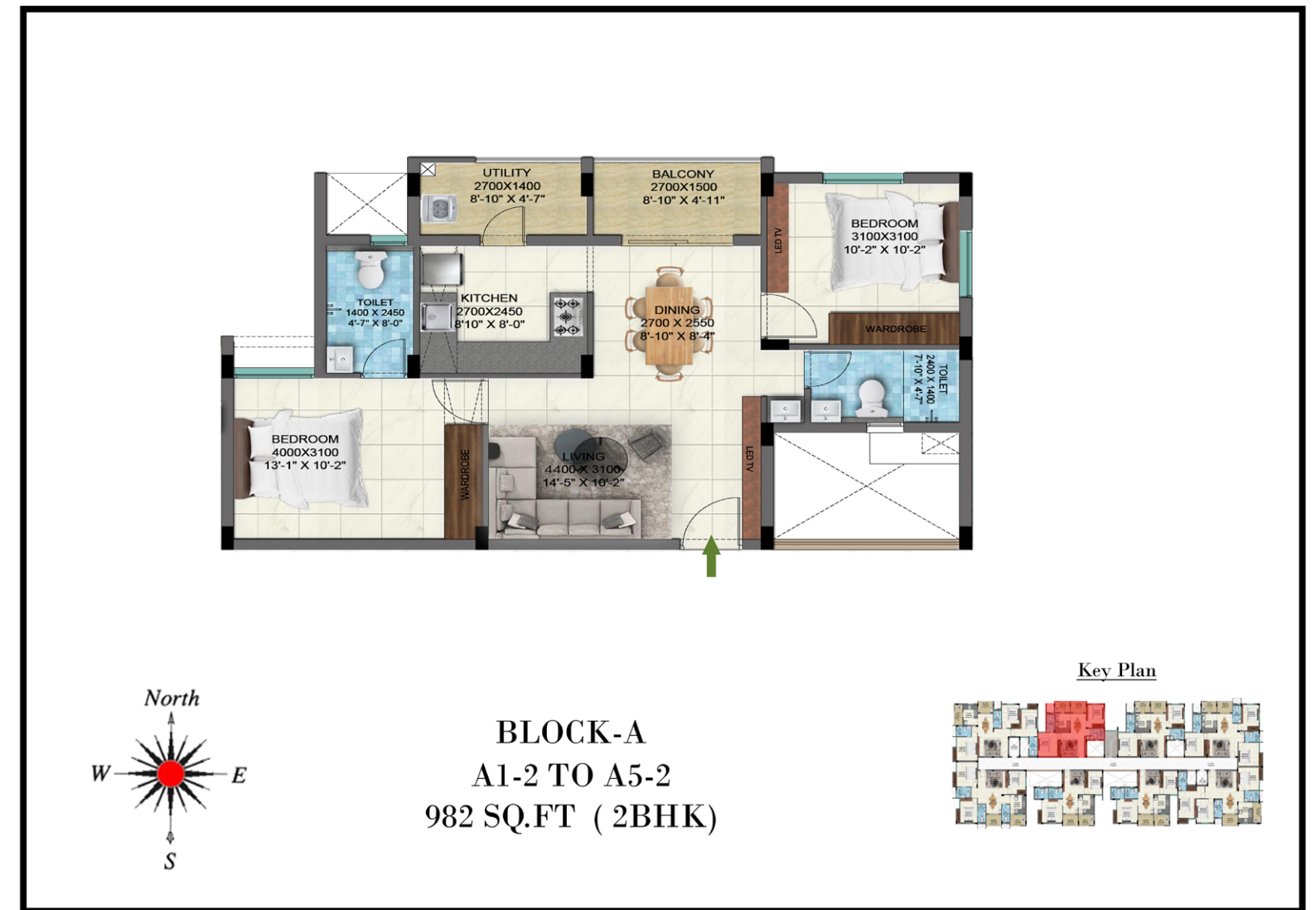
B2-7A TO B5-7A (3BHK)
1318 SQ.FT

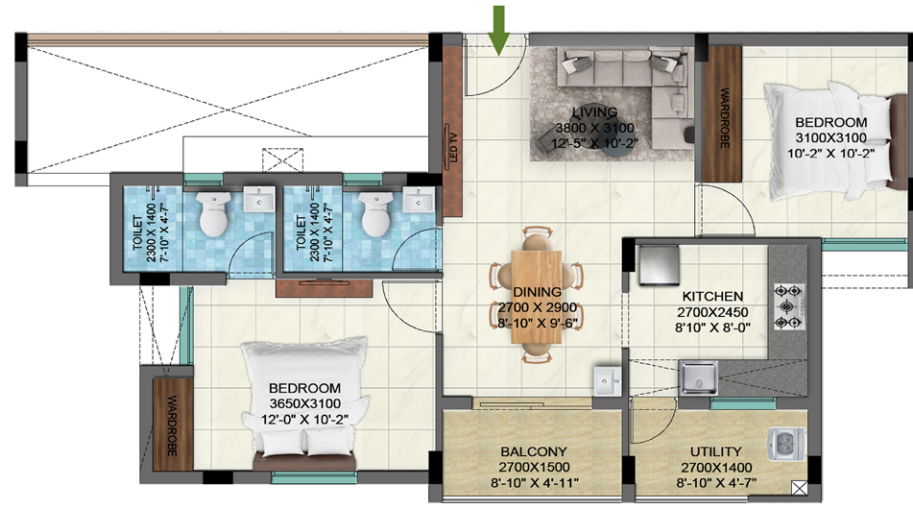
B2-7 TO B5-7 (2BHK)
956 SQ.FT

B2-6 TO B5-6 (2BHK)
946 SQ.FT

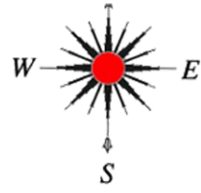
B2-5 TO B5-5 (3BHK)
1364 SQ.FT



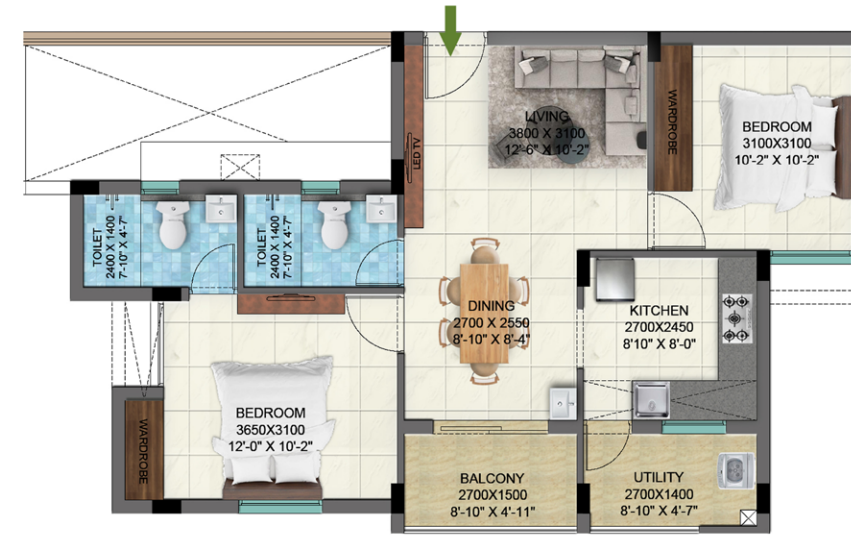




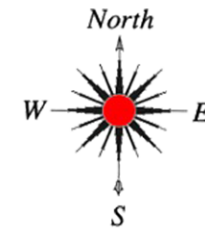
BLOCK-A
A1-6 TO A5-6
946 SQ.FT (2BHK)



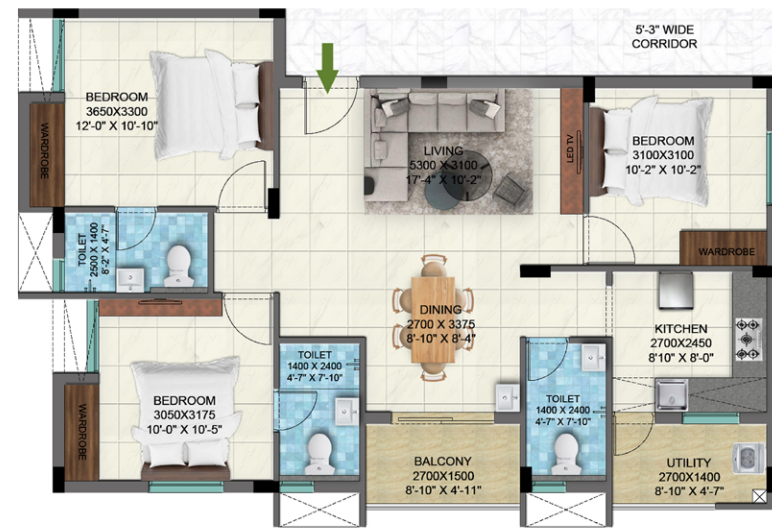
Key Plan



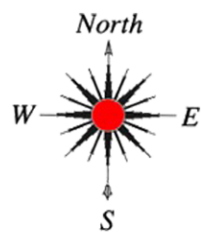
BLOCK-A
A1-7 TO A5-7
956 SQ.FT (2BHK)



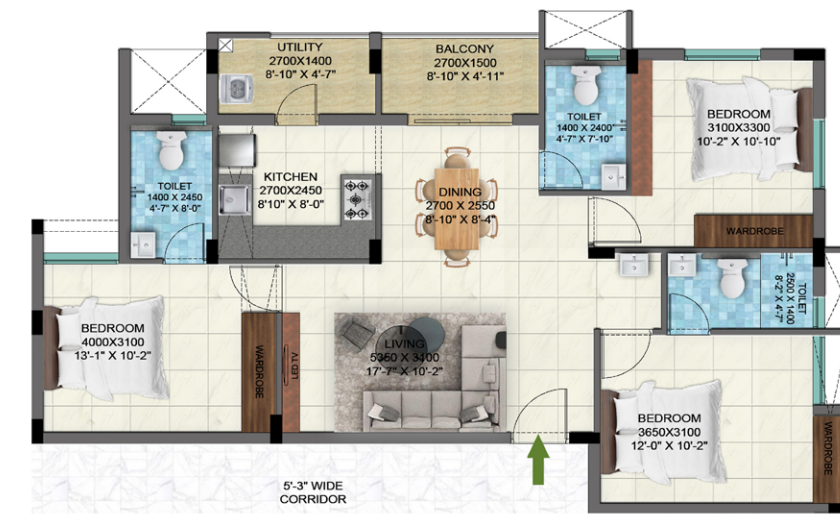
Key Plan



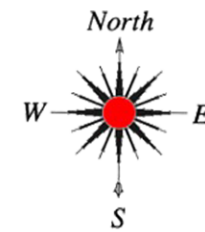
BLOCK-A
A1-7A TO A5-7A
1318 SQ.FT (3BHK)



Key Plan

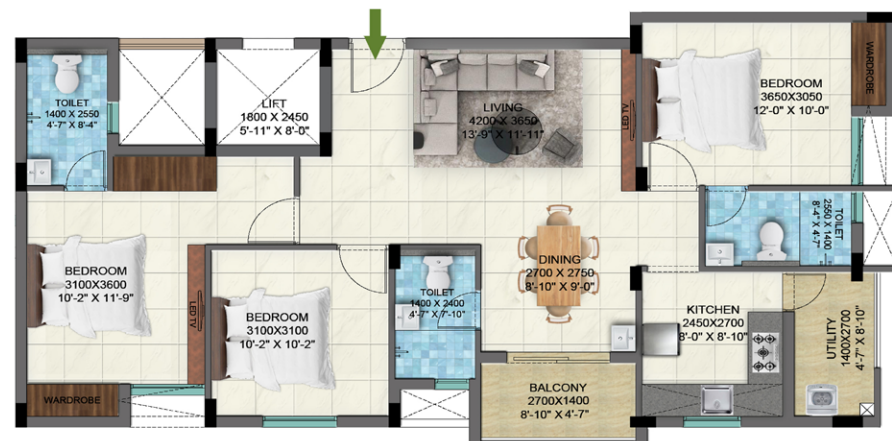


BLOCK-A
A2-4 TO A5-4
1314 SQ.FT (3BHK)

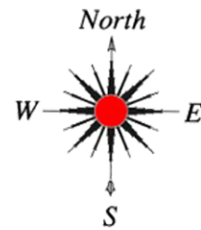


Key Plan





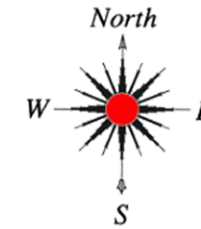
Key Plan



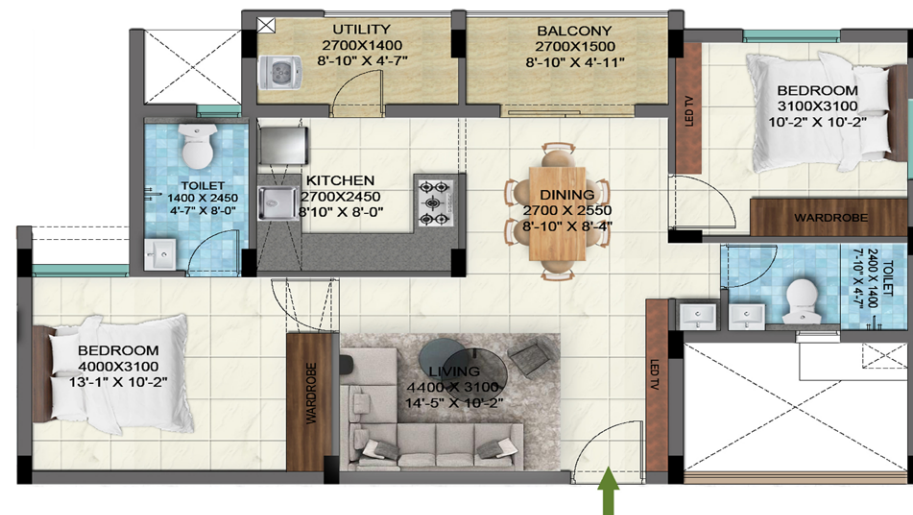
BLOCK-A
A2-5 TO A5-5
1364 SQ.FT (3BHK)



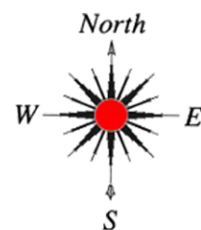
Key Plan



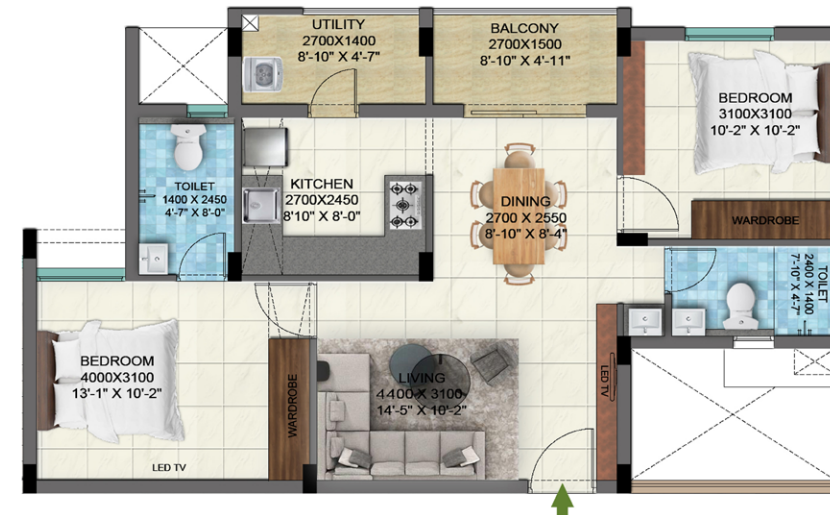
BLOCK-B
B1-1
1353 SQ.FT (3BHK)



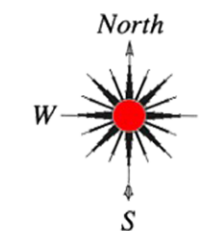
Key Plan



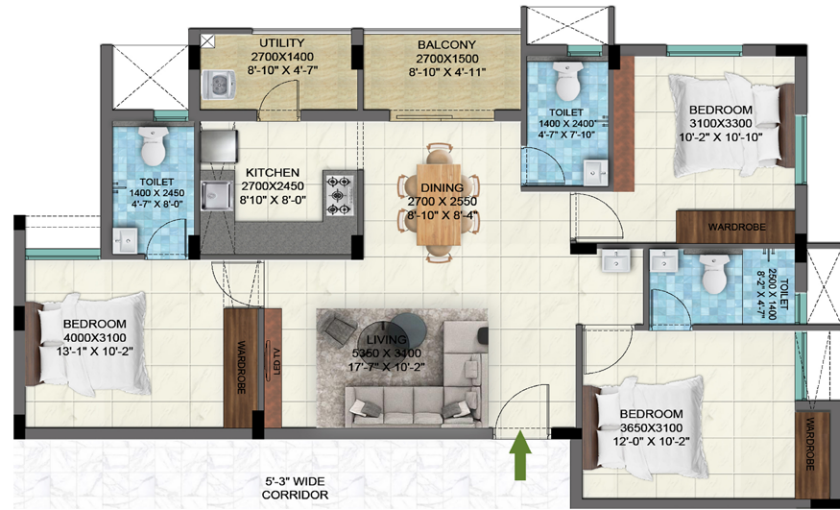
BLOCK-B
B1-2 TO B5-2
982 SQ.FT (2BHK)



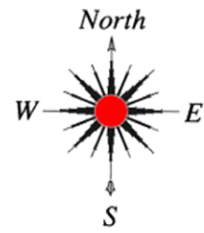
Key Plan



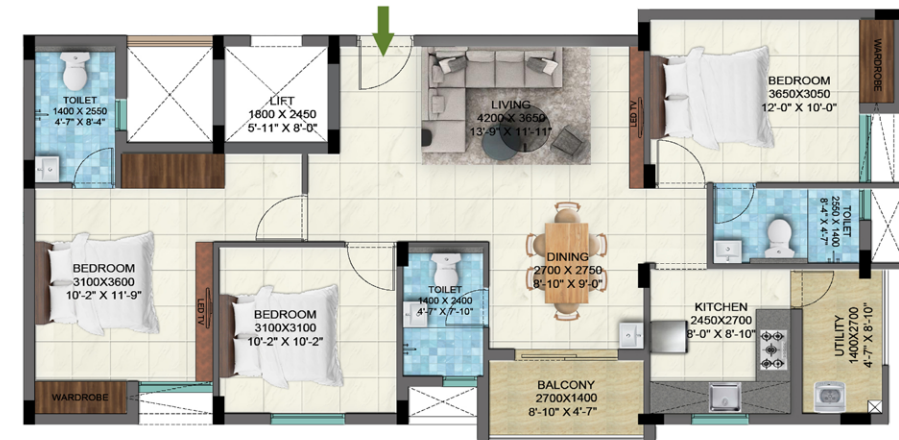
BLOCK-B
B1-3 TO B5-3
986 SQ.FT (2BHK)



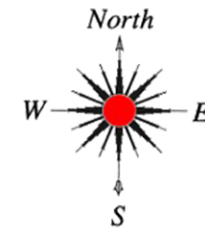
Key Plan



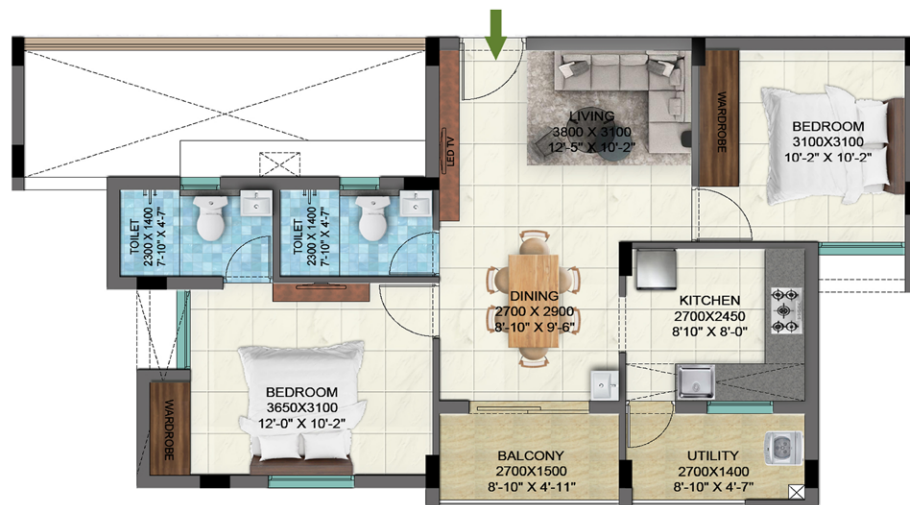
BLOCK-B
B1-4 TO B5-4
1314 SQ.FT (3BHK)



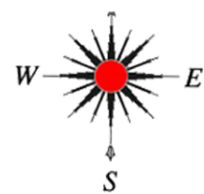
Key Plan



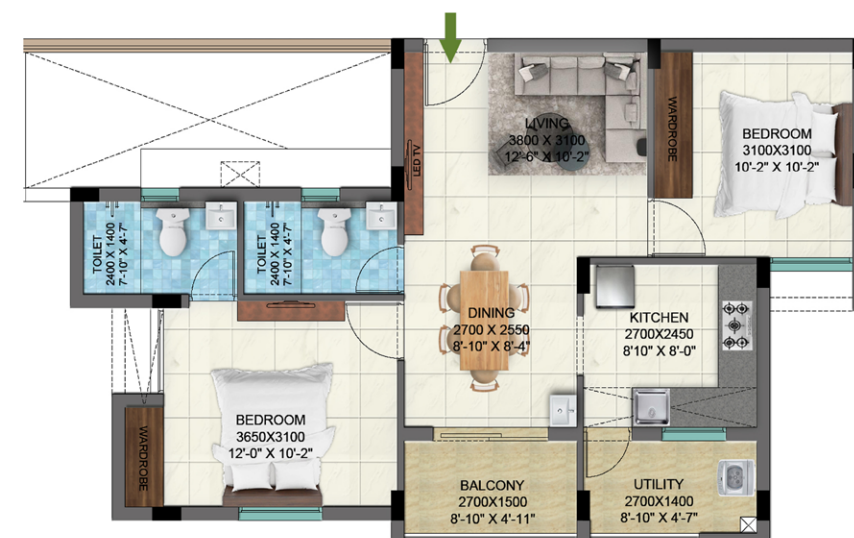
BLOCK-B
B1-5 TO B5-5
1364 SQ.FT (3BHK)



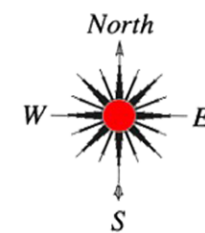
Key Plan



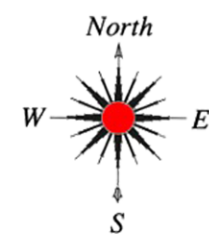
BLOCK-B
B1-6 TO B5-6
946 SQ.FT (2BHK)



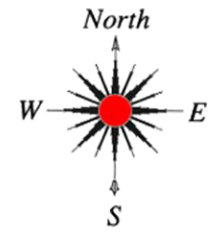
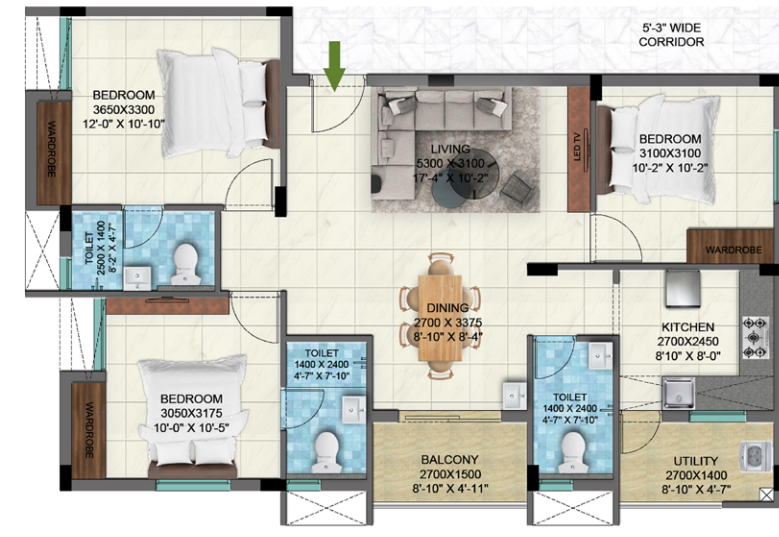
Key Plan



BLOCK-B
B1-7 TO B5-7
956 SQ.FT (2BHK)



BLOCK-B
B2-1 TO B5-1
1347 SQ.FT (3BHK)



BLOCK-B
B2-7A TO B5-7A
1318 SQ.FT (3BHK)





RUBY
ARCADIA

UNIT PLANS



LOCATION ADVANTAGES

- Agaramthen main road 0.5Km
- Mappedu junction 1Km
- Camp Road junction 5Km
- Vandalur Kelambakkam Road 4.5Km
- Perungalathur Railway Station 7Km
- Tambaram Railway Station 8Km
- Kilambakkam bus terminus 10Km

Colleges around 5 kms radius

- Bharath University
- Sri Lakshmi Ammaal Engineering College
- Tagore Engineering College
- New Prince Shri Bhavani College Of Engineering & Technology
- Mohammed Sathak Arts and Science College
- GKM College of Engineering & Technology

Schools around 3 kms radius

- Zion International Public School
- Mount Carmel Matriculation School
- Lydia Matriculation Higher Secondary School
- Christwood School
- Bharath Public School CBSE
- Zion Matriculation Hr. Sec. School
- Horizon International Academy
- St. John's Matriculation School
- Annai Arul Public School
- Shree Niketan School

SPECIFICATIONS

Structure

- RCC framed structure.
- Environment friendly walls with Fly-ash / Solid / AAC blocks.
- Pre constructional anti-termite treatment under foundation and along external perimeter of the building.

Flooring & Dado

- 2'x2' Branded vitrified tile for living, dining, bedrooms, kitchen & Balconies.
- Anti-skid Branded ceramic tiles for toilet floors.
- 4 inch high skirting matching the floor tiles as per design.
- Wall dados – Glazed / Matt ceramic Branded tiles 7' ht. for toilets.

Kitchen/Utility

- Glazed / Matt finished Branded ceramic tiles in kitchen for a height of 2' above platform.
- Single bowl Branded stainless steel sinks in kitchen.
- Sufficient 15 amp & 5 amp socket provision for chimney & other kitchen appliances.
- Provision for connecting individual RO System in Kitchen.

Water Supply / Plumbing & Sanitary

- ISI Certified pipes: CPVC for concealed supply lines, UPVC for open supply lines and PVC for Drainage & sewer lines.
- Superior quality Branded wall mounted EWC in all toilets.
- Superior quality Branded Hand wash basins in all bat rooms.
- Superior quality Branded CP fittings in all toilets.
- False ceiling in all toilets.
- Branded Single lever concealed diverter unit in all toilets for hot & cold water.
- Provision for connecting washing machine.

Painting

- Exterior faces of the building including balconies will be finished with cement plaster & weather shield Branded paints.
- Interior: Smooth finish with Branded putty & Acrylic emulsion paints.
- Common area will be finished with Branded Acrylic emulsion Paints over cement plaster.

Electrical

- Wiring with ISI Branded copper cable in PVC concealed conduits.
- Branded Modular plates & switches.
- Ready to use AC power point in all bedrooms and Hall [OR] Dining.
- Details of Electrical Points – Refer Annexure.

Doors & Windows

- Main Door: Factory made Flush Doors with standard hardware's.
- Interior Doors: Factory made Paneled doors with standard hardware's.
- Hardware Fittings: Branded –Brass–Satin Steelfinished.
- Locks: Branded. – Satin Steel Finished.
- Windows: UPVC Sliding shutters with plain glass.
- M.S grill for all windows as per design, finished with enamel paint.

Elevators

- Branded Elevator(s) fitted with ARD.

Security System

- CCTV Surveillance Cameras – for common areas like Stilt floor, corridors.
- Door Lenses.

WELCOME TO THE HOME BUYING
EXPERIENCE OF A LIFETIME

5800 + happy
families

190 + completed
projects

25 + years of
experience

ONE name that has always stood for
consistent quality - Ruby Builders

ruby
Building future

Corp Office: **RUBY BUILDERS & PROMOTERS**, No.247/B, Velachery Main Road, Selaiyur, Chennai-73.

Call: 044 - 6009 6009 / 72006 72006

Email: marketing@rubybuilderschennai.com | www.rubybuilders.in

CREDAI

