



3 BHK Spacious Homes

**SITE ADDRESS**

Opp. Shreedhar Flora, Amarjawan Circle, NIKOL, Ahmedabad.

**Mob. : +91 91063 91117**

DEVELOPER :



ARCHITECT :



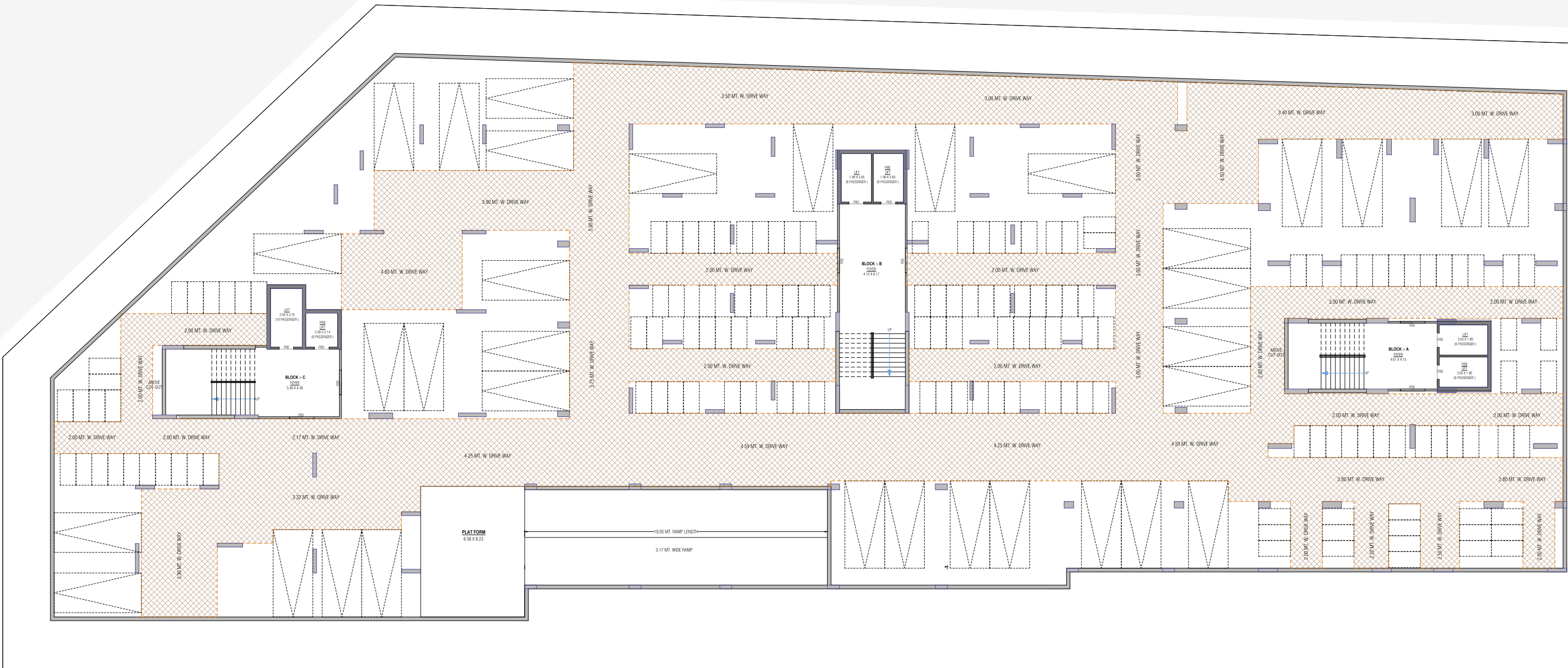
RERA NO. : \_\_\_\_\_  
WEBSITE : [www.gujrera.gujarat.gov.in](http://www.gujrera.gujarat.gov.in)





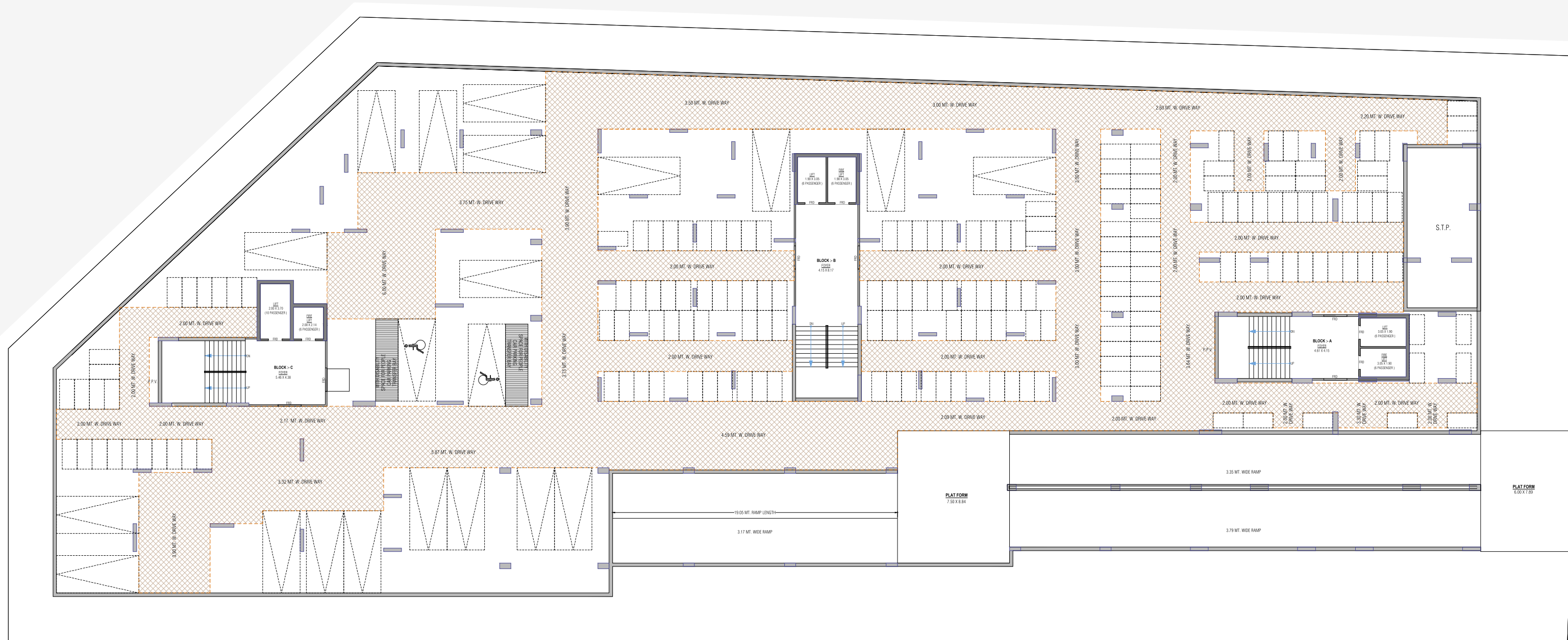


# 2ND BASEMENT PLAN



18.00 MT WIDE T.P.S. ROAD

# 1ST BASEMENT PLAN



18.00 MT. WIDE T.P.S. ROAD



# GROUND FLOOR PLAN



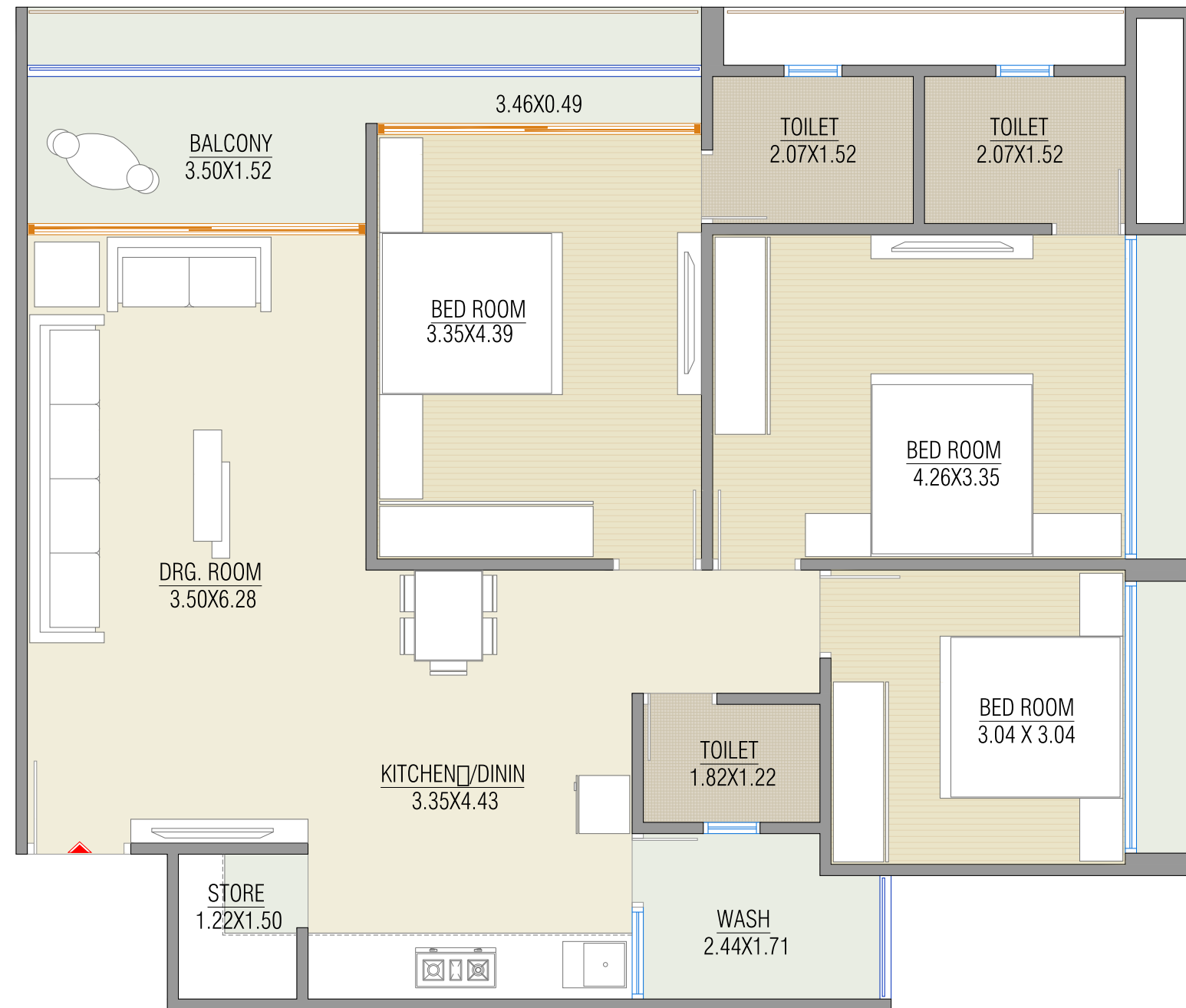


# TYPICAL FLOOR PLAN

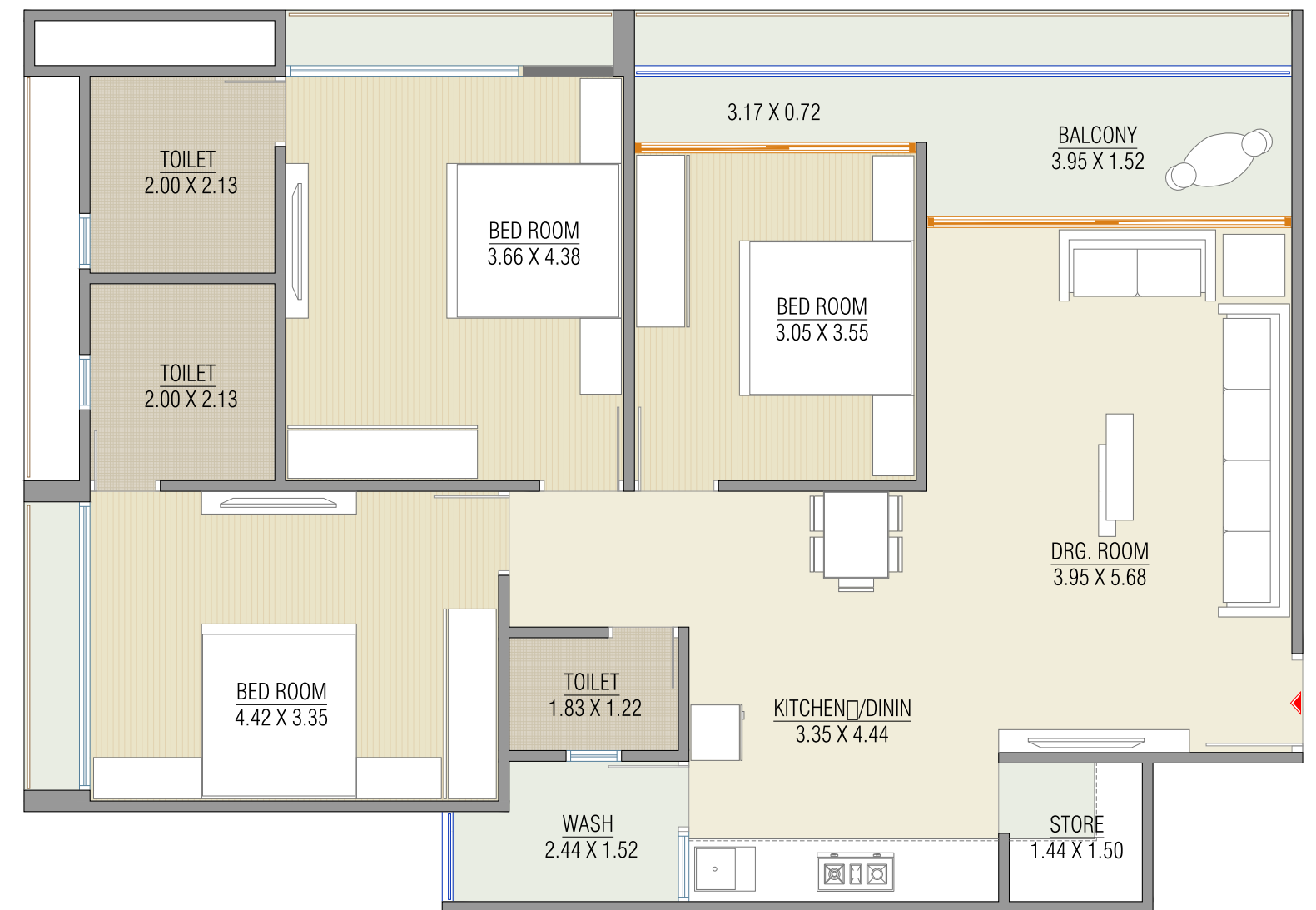




## UNIT PLAN (BLOCK - A)



## UNIT PLAN (BLOCK - B)

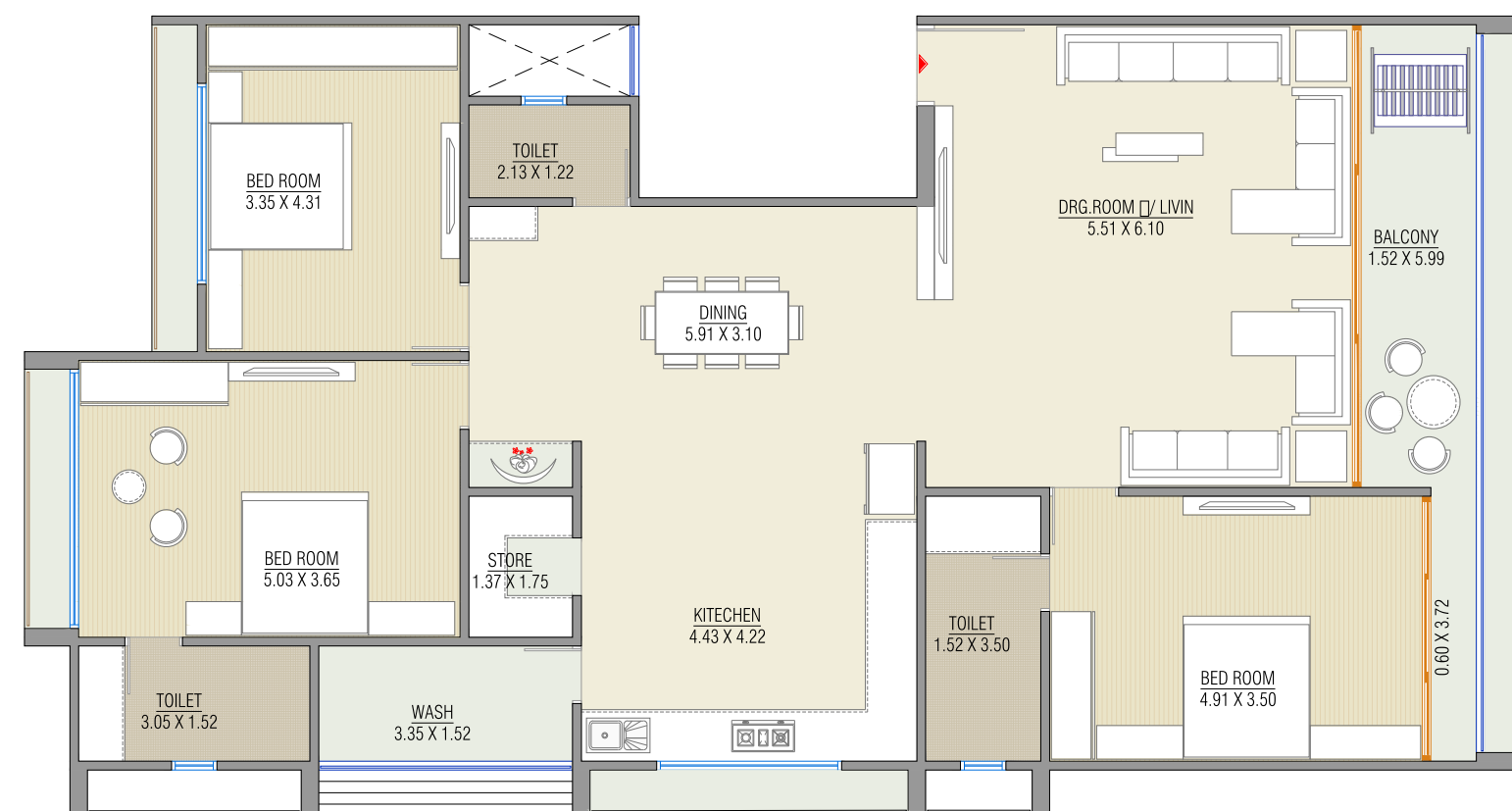




## UNIT PLAN 101 (BLOCK - C)



## UNIT PLAN 102 (BLOCK - C)





## SPECIFICATIONS

### STRUCTURE

Earth quake resistant R.C.C. frame structure as per new laws.

### FLOORING

2.5" X 5" Premium Quality Vitrified tiles for entire flooring in all apartments.

### WALL FINISH / ELEVATION

Internal mala plaster with finish putty. attractive external elevation with double coat sand faced plaster texture.

### DOORS & WINDOWS

Decorative main door & other flush doors. All windows in Domel Section with granite frame, standard quality window glass.

### KITCHEN

Mirror polished granite platform with S.S. sink, Designer glaze tiles up to lintel level.

### ELECTRIFICATION

Branded ISI modular switches with concealed copper wiring and the adequate number of points & ELCB/MCB distribution panel.

### PLUMBING

ISI CPVC/UPVC pipes for water supply, PVC & SWR pipes for solid waster and drainage systems. percolation recharge wells as per the norms branded CP Fittings

### TOILET

Designer tiles on floor and walls up to lintel level.  
Branded sanitary & bath fittings. (Jaguar, Cera, Hindware & Others Premium Quality)

### TERRACE

Brick-bat concrete with china mosaic for heat reflection and Thermal insulation with water proofing.



### SITE ADDRESS

Opp. Shreedhar Flora, Amarjawan Circle, NIKOL, Ahmedabad.

Mob. : +91 91063 91117

DEVELOPER :



ARCHITECT :



Scan for Location

