



PROJECT BY SHRINVAS ORGANISERS PRIVATE LIMITED



SITE ADDRESS

"SUPERCITY", Bhadaj - Dental College Road, Near Science City, Ahmedabad 382 115
contact@supercityproject.com | supercitylife.com | +91 90999 77909

91040281 441 79 4202 4000





A LEGACY OF REALTY EXCELLENCE AESTHETIC INTEGRITY COUPLED WITH INNOVATIVE THINKING-

These are supporting columns of our design process and the plinth of every endeavor that we undertake. Famed as elite jewelers for over 35 years, we have carried forward our legacy and deep rooted understanding of aesthetics into the realm of real estate. That's why, our designs more crafted than plotted, bringing together a unique blend of architectural excellence and human sensibility. We are driven by the perseverance of diverse professionals working with us, but we are powered by the zest to give shape and structure to the dreams of our clients.

Supercity is our vision of art by design. From the beginning, we wanted to create warm and inviting homes. By taking a step back, and really looking at the process from up above, we were able to re-imagine Supercity as a luxury living experience. Furnished with lavish spaces, equipped with modern amenities and decked lush landscapes. Both inside and out, Supercity has been designed by us with passion and precision and is the epitome of ergonomic and thoughtful creative process.



THE SUPERIOR LIFE

project by Shrinivas Organizers Private Limited

SUPERCITY – LIVING, REIMAGINED

It's that **PERFECT LIFESTYLE** you've been seeking for to settle with your family. Nestled in a **LUSH ECOSYSTEM**, it has the haute couture of **LUXURY** combined with a tag of **'TOP VALUE'** per every square inch of its **SPRAWLING ACRES**. Warm, inviting and full of the finest amenities of the modern world, it offers you the kind of indulgence you can relax in or open up to. And even better, it's only a short drive or a pleasant walk away from everything you need....

For some it's the right place to enjoy the moments that matter, for others it's the perfect venue to make memories that will last a lifetime... **WELCOME TO THE SUPERCITY.....LIVING, REIMAGINED!**



PRIDE

3 & 4 BHK LUXURIOUS BUNGALOWS

Enter Excellence

Up a paved driveway, and through its elegant entrance facade, awaits a world that has been designed to suit modern day living. A lush landscape covers the open spaces, cascaded with floral plantations and dedicated play areas. It is place where there is something for every generation. From clubhouses, to children's park, to casual sitouts, Pride is in true sense a reimagination of living experience.



PRIDE TYPE A



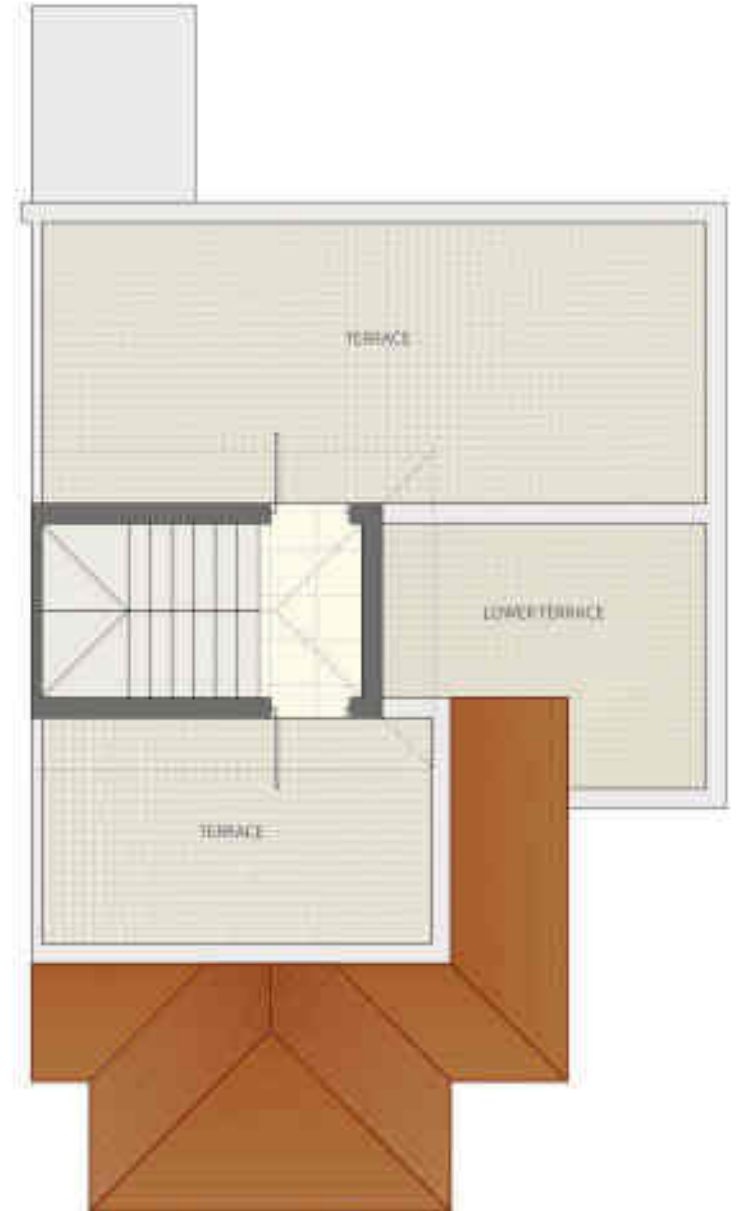
GROUND FLOOR



FIRST FLOOR



SECOND FLOOR



PRIDE TYPE B



GROUND FLOOR



FIRST FLOOR



SECOND FLOOR



PRIDE TYPE B1



GROUND FLOOR



FIRST FLOOR



SECOND FLOOR





PRIDE
3 & 4 BHK LUXURIOUS BUNGALOWS

15 M WIDE ROAD



| |
|-----------|
| A |
| 109 - 117 |
| 120 - 128 |
| 131 - 139 |
| 142 - 150 |
| B |
| 108 |
| 118 - 119 |
| 129 - 130 |
| 140 - 141 |
| 151 |
| B1 |
| 1 |
| 08 - 09 |
| 17 - 18 |
| 26 - 27 |
| 34 |
| 51 - 52 |
| 54 - 55 |
| 77 - 78 |
| 92 - 93 |
| 107 |
| C |
| 02 - 07 |
| 10 - 16 |
| 19 - 25 |
| 28 - 33 |
| 79 - 91 |
| 94 - 106 |
| C1 |
| 35 - 50 |
| 56 - 76 |
| 53 |



TOWARDS ISCON TEMPLE

18 M WIDE ROAD

TOWARDS SCIENCE CITY CIRCLE

ENTRY

PRIDE TYPE C



GROUND FLOOR



FIRST FLOOR



SECOND FLOOR



PRIDE TYPE C 1



GROUND FLOOR



FIRST FLOOR



SECOND FLOOR



AMENITIES



EXQUISITE
LANDSCAPED GARDEN



CHILDREN'S PLAY AREA



WATER BODIES, LOTUS POND
PLEASANT SIT OUTS



CLUB HOUSE WITH FULLY EQUIPPED
GYMNASIUM & STEAM ROOM



MULTIPURPOSE ACTIVITIES
ROOM & INDOOR GAMES



YOGA DECK



INDOOR
HOME THEATRE



SWIMMING POOL &
KIDS POOL



VOLLEYBALL COURT,
HALF BASKETBALL COURT



DG BACK UP SYSTEM FOR
COMMON AMENITIES



SPECIFICATIONS

FLOORING

| | |
|------------------|---|
| LIVING / DRAWING | Premium vitrified tiles |
| BED ROOM | Wooden flooring in one master bedroom & vitrified tiles in other bedrooms |
| KITCHEN | Vitrified tiles flooring Granite platform with s.s. Sink with drain board Glazed tiles above platform up to lintel level Kota stone shelves in store room Kota stone floor in wash area |

| | |
|-------------------|--------------|
| BALCONY / TERRACE | Rustic tiles |
|-------------------|--------------|

DOORS

| | |
|-------------|--|
| MAIN DOOR | Main door polish natural veneer with night latch |
| OTHER DOORS | Other doors coloured flush doors |

| | |
|---------|--------------------------------------|
| WINDOWS | Wooden frames with openable shutters |
|---------|--------------------------------------|

| | |
|---------|---|
| TOILETS | Glazed / ceramic tiles upto lintel level Hot & cold water supply line High quality plumbing fixtures & sanitary wares |
|---------|---|

| | |
|-----------------|---|
| ELECTRIFICATION | 3 phase concealed ISI copper wiring with Modular switches, M.C.B. Distribution panel, A.C., TV & telephone points |
|-----------------|---|

| | |
|--------|--|
| COLOUR | Internal putty finish External 100% acrylic paint |
|--------|--|

| | |
|----------|---|
| SECURITY | CCTV surveillance through out the society, Intercom facilities |
|----------|---|

Disclaimer

- Within the permissible law and limit the developers reserve the right to change the specification etc.

LOCATION MAP



DISTANCE by

- 1 MIN - Anand Niketan School
- 2 MIN - Iskon Temple Ashraya Patra
- 2 MIN - Ahmedabad Dental College
- 3 MIN - Calore Olive International School
- 6 MIN - S.P. Ring Road
- 6 MIN - Science City
- 10 MIN - CIMS Hospital
- 10 MIN - S.G. Highway

PROPOSED

super  CITY
lifestyle township

ACCESS the key to comfort

WARMTH OF A HOME CONVENIENCE OF TOWN

SERENITY OF NATURE AMENITIES OF A CITY

A SAFE HAVEN AN EVEN VIBRANT NEIGHBOURHOOD

A PEACEFUL PLACE TO RELAX A LIVING HUB TO SOCIALIZE

VALUE FOR MONEY OWNER'S PRIDE

It's the Best of Both worlds in one Super**CITY!**





SITE ADDRESS

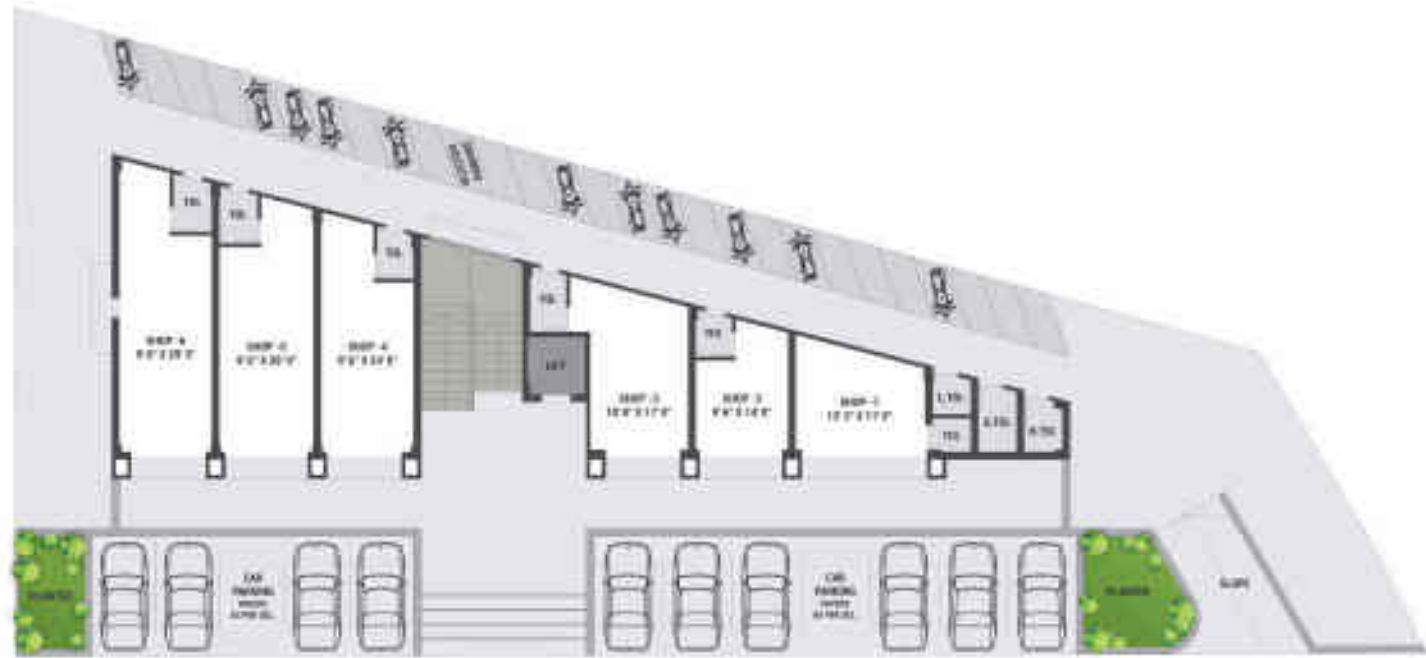
"SUPERCITY", Bhadaj - Dental College Road, Near Science City, Ahmedabad 382 115
contact@supercityproject.com | supercitylife.com | +91 90999 77909

www.supercitylife.com

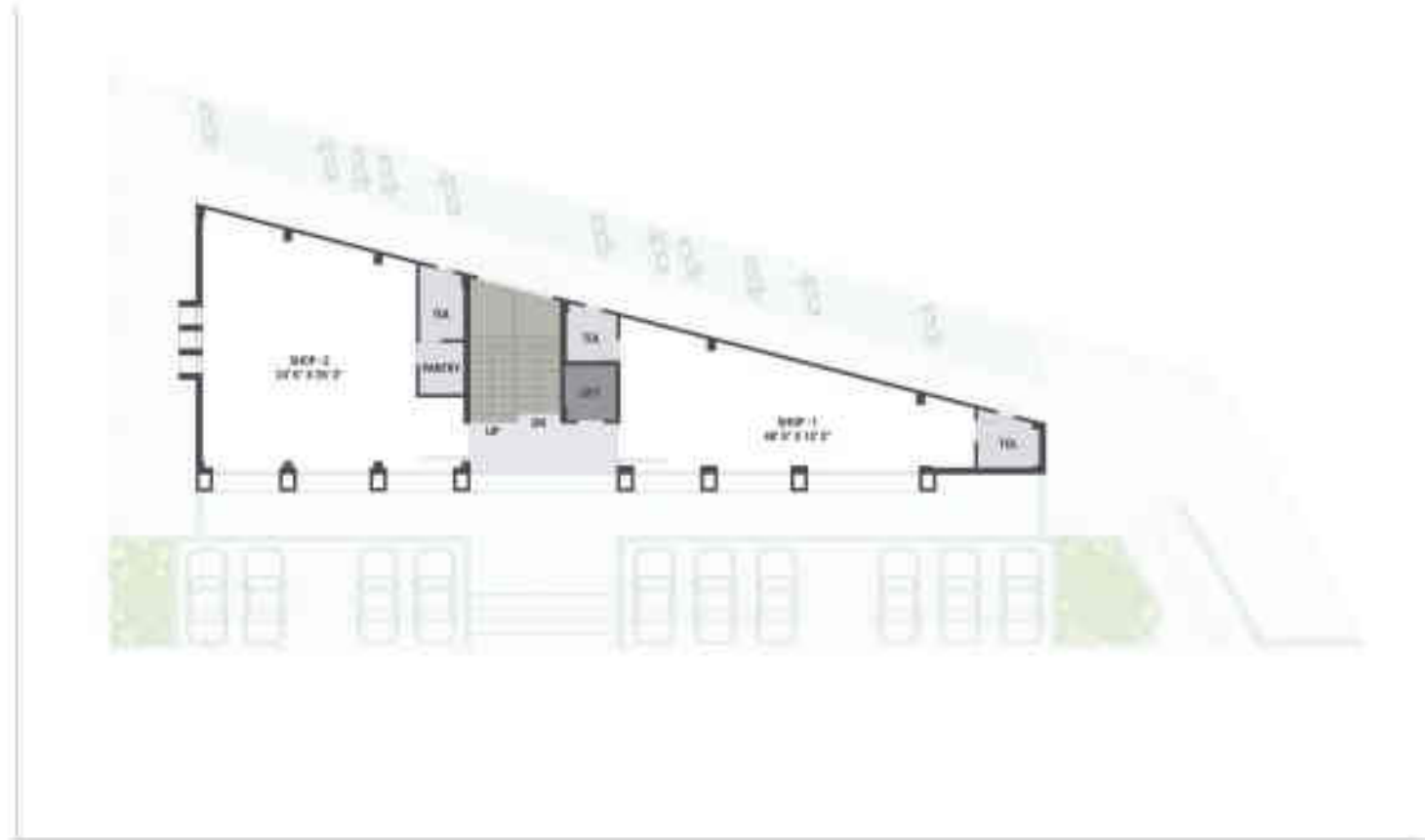
SUPER PLAZA



GROUND FLOOR



FIRST & SECOND FLOOR





SITE ADDRESS

"SUPERCITY", Bhadaj - Dental College Road, Near Science City, Ahmedabad - 382 115
contact@supercityproject.com | supercitylife.com | +91 90999 77909

RENDERING BY SHREEVAH





**A LEGACY OF REALTY EXCELLENCE AESTHETIC
INTEGRITY COUPLED WITH INNOVATIVE THINKING-**

These are supporting columns of our design process and the plinth of every endeavor that we undertake. Famed as elite jewellers for over 35 years, we have carried forward our legacy and deep rooted understanding of aesthetics into the realm of real estate. That's why, our designs more crafted than plotted, bringing together a unique blend of architectural excellence and human sensibility. We are driven by the perseverance of diverse professionals working with us, but we are powered by the zest to give shape and structure to the dreams of our clients.

Supercity is our vision of art by design. From the beginning, we wanted to create warm and inviting homes. By taking a step back, and really looking at the process from up above, we were able to re-imagine Supercity as a luxury living experience, furnished with lavish spaces, equipped with modern amenities and decked lush landscapes. Both inside and out, Supercity has been designed by us with passion and precision and is the epitome of ergonomic and thoughtful creative process.



THE SUPERIOR LIFE

project by Shrinivas Organisers Private Limited

SUPERCITY – LIVING, REIMAGINED

It's that **PERFECT LIFESTYLE** you've been seeking for to settle with your family. Nestled in a **LUSH ECOSYSTEM**, it has the haute-couture of **LUXURY** combined with a tag of **'TOP VALUE'** per every square inch of its **SPRAWLING ACRES**. Warm, inviting and full of the finest amenities of the modern world, it offers you the kind of indulgence you can relax in or open up to. And even better, it's only a short drive or a pleasant walk away from everything you need...

For some it's the right place to enjoy the moments that matter, for others it's the perfect venue to make memories that will last a lifetime...**WELCOME TO THE SUPERCITY.....LIVING, REIMAGINED!**



GLORY

3 & 4 BHK LUXURIOUS BUNGALOWS

Enter a Glorious Paradise

At Super City Glory, a world of excellence in architectural and landscape design awaits you. From an elegant entrance facade, to smoothly paved walkways; from lush surroundings to peaceful sit-outs and spacious homes, it's the perfect setting for families to bond in the sunshine of joy. Welcome to Glory a living experience nestled in a natural paradise.



GROUND FLOOR



FIRST FLOOR



SECOND FLOOR



GLORY TYPE A1



GROUND FLOOR



FIRST FLOOR



SECOND FLOOR



GLORY TYPE B



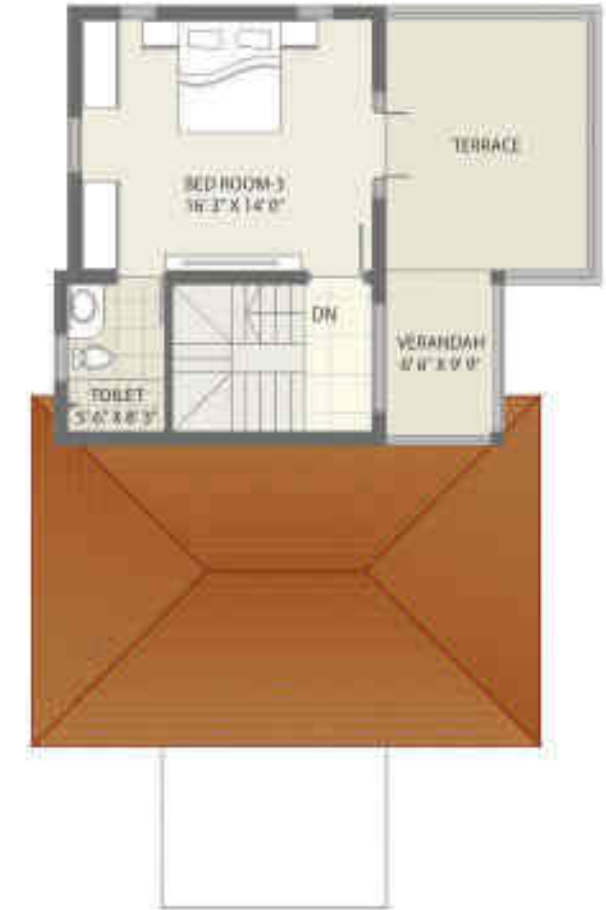
GROUND FLOOR



FIRST FLOOR



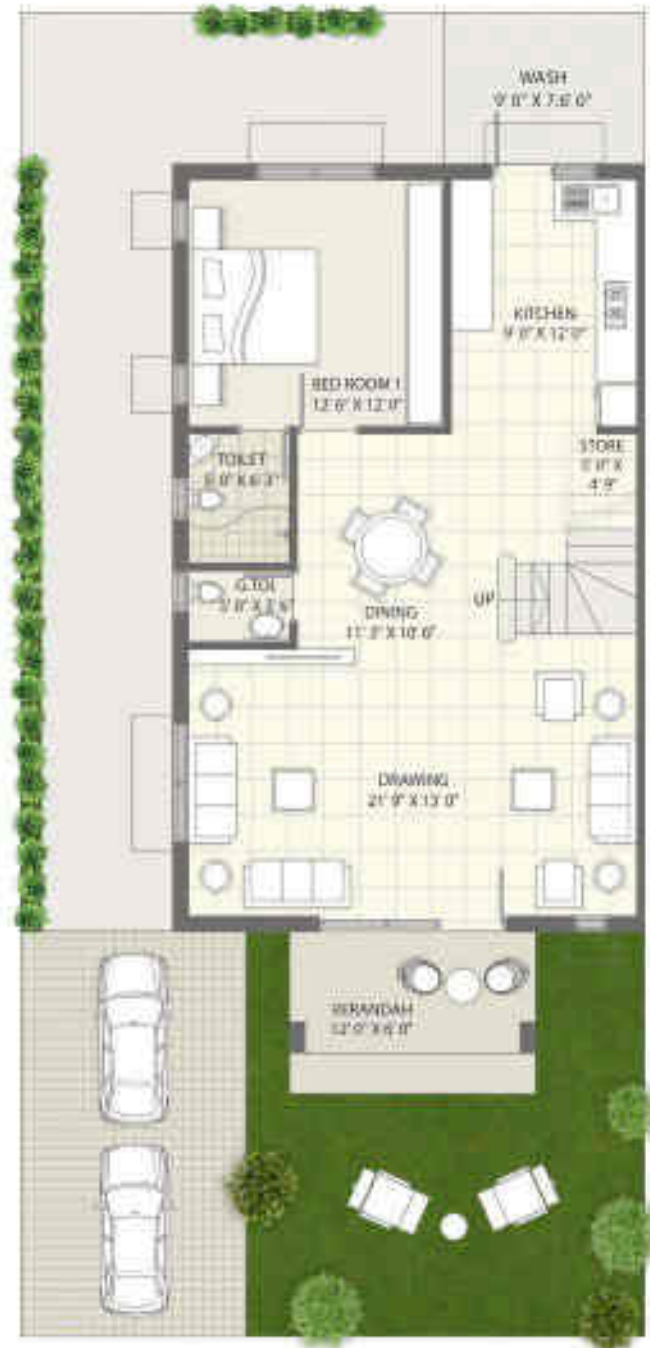
SECOND FLOOR



GLORY TYPE C



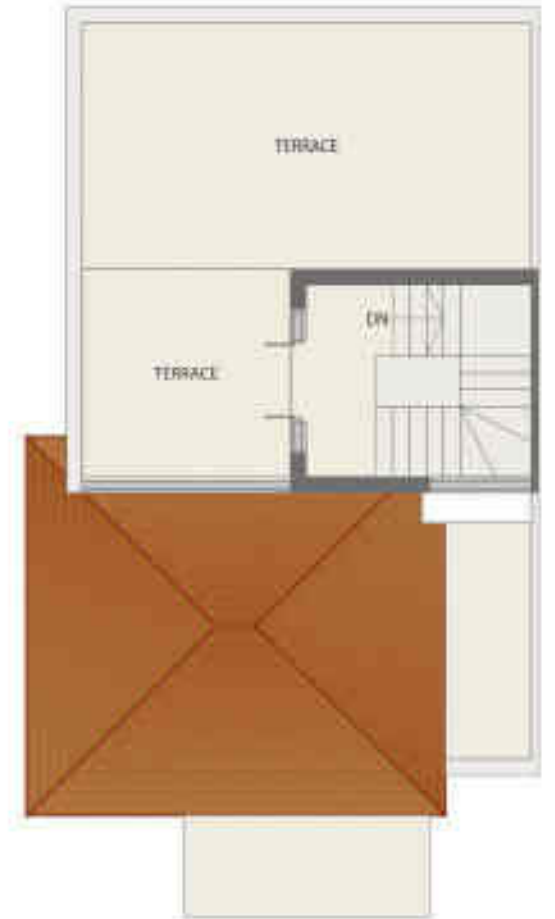
GROUND FLOOR



FIRST FLOOR



SECOND FLOOR





GLORY
3 & 4 BHK LUXURIOUS BUNGALOWS



| |
|-----------|
| A |
| 110 - 115 |
| 116 - 123 |
| A1 |
| 124 - 142 |
| B |
| 1 - 10 |
| 11 - 21 |
| 22 - 32 |
| 33 - 42 |
| 43 - 52 |
| 53 - 67 |
| 68 - 82 |
| 83 - 92 |
| 93 - 102 |
| 103 - 109 |
| C |
| 143 - 152 |
| 153 - 162 |
| 163 - 172 |
| 173 - 183 |
| 184 - 185 |
| 186 - 208 |







AMENITIES



EXQUISITE
LANDSCAPED GARDEN



CHILDREN'S PLAY AREA



WATER BODIES, LOTUS POND
PLEASANT SIT OUTS



CLUB HOUSE WITH FULLY EQUIPPED
GYMNASIUM & STEAM ROOM



MULTIPURPOSE ACTIVITIES
ROOM & INDOOR GAMES



YOGA DECK



INDOOR
HOME THEATRE



SWIMMING POOL &
KIDS POOL



VOLLEYBALL COURT,
HALF BASKETBALL COURT



DG BACK UP SYSTEM FOR
COMMON AMENITIES







SPECIFICATIONS

FLOORING

| | |
|------------------|---|
| LIVING / DRAWING | Premium vitrified tiles |
| BED ROOM | Wooden flooring in one master bedroom & vitrified tiles in other bedrooms |
| KITCHEN | Vitrified tiles flooring Granite platform with S.S. Sink with drain board Glazed tiles above platform up to lintel level Kota stone shelves in store room Kota stone floor in wash area |

| | |
|-------------------|--------------|
| BALCONY / TERRACE | Rustic tiles |
|-------------------|--------------|

DOORS

| | |
|-------------|--|
| MAIN DOOR | Polished natural veneer with night latch |
| OTHER DOORS | Polished flush doors |

WINDOWS

| | |
|---------|--------------------------------------|
| TOILETS | Wooden frames with Openable shutters |
|---------|--------------------------------------|

TOILETS

| | |
|-----------------|---|
| ELECTRIFICATION | Ceramic tiles up to lintel level Hot & cold water supply line High quality plumbing fixtures & sanitary wares |
|-----------------|---|

ELECTRIFICATION

| | |
|--------|---|
| COLOUR | 3 phase concealed ISI copper wiring with Modular switches, M.C.B. Distribution panel, A.C., TV & telephone points |
|--------|---|

COLOUR

| | |
|----------|---|
| SECURITY | Internal putty finish External 100% acylic paint |
|----------|---|

SECURITY

| | |
|------------|---|
| Disclaimer | CCTV surveillance through out the society, Intercom facilities |
|------------|---|

Disclaimer

- Within the permissible law and limit the developers reserve the right to change the specification etc.



LOCATION MAP



DISTANCE by

- 1 MIN - Anand Niketan School
- 2 MIN - Aashva Patra Temple
- 2 MIN - Ahmedabad Dental College
- 3 MIN - Olive International School
- 6 MIN - SP Ring Road
- 6 MIN - Science City
- 10 MIN - GMS Hospital
- 10 MIN - SG Highway

PROPOSED

super CITY
lifestyle township



ACCESS the key to comfort

WARMTH OF A HOME / CONVENIENCE OF TOWN

SERENITY OF NATURE / AMENITIES OF A CITY

A SAFE HAVEN / AN EVEN VIBRANT NEIGHBOURHOOD

A PEACEFUL PLACE TO RELAX / A LIVING HUB TO SOCIALIZE

VALUE FOR MONEY / OWNER'S GLORY

It's the Best of Both worlds in one Super**CITY!**



SITE ADDRESS

"SUPERCITY", Bhadaj - Dental College Road, Near Science City, Ahmedabad 382 115
contact@supercityproject.com | supercitylife.com | +91 90999 77909

www.supercityproject.com





**A LEGACY OF REALTY EXCELLENCE AESTHETIC
INTEGRITY COUPLED WITH INNOVATIVE THINKING-**

These are supporting columns of our design process and the plinth of every endeavor that we undertake. Famed as elite jewelers for over 35 years, we have carried forward our legacy and deep rooted understanding of aesthetics into the realm of real estate. That's why, our designs more crafted than plotted, bringing together a unique blend of architectural excellence and human sensibility. We are driven by the perseverance of diverse professionals working with us; but we are powered by the zest to give shape and structure to the dreams of our clients.

Supercity is our vision of art by design. From the beginning, we wanted to create warm and inviting homes. By taking a step back, and really looking at the process from up above, we were able to re-imagine Supercity as a luxury living experience, furnished with lavish spaces, equipped with modern amenities and decked lush landscapes. Both inside and out, Supercity has been designed by us with passion and precision and is the epitome of ergonomic and thoughtful creative process.



THE SUPERIOR LIFE

project by Shrinivas Organisers Private Limited

SUPERCITY – LIVING, REIMAGINED

It's that **PERFECT LIFESTYLE** you've been seeking for to settle with your family. Nestled in a **LUSH ECOSYSTEM**. It has the haute-couture of **LUXURY** combined with a tag of **TOP VALUE** per every square inch of its **SPRAWLING ACRES**. Warm, inviting and full of the finest amenities of the modern world, it offers you the kind of indulgence you can relax in or open up to. And even better, it's only a short drive or a pleasant walk away from everything you need...

For some it's the right place to enjoy the moments that matter, for others it's the perfect venue to make memories that will last a lifetime... **WELCOME TO THE SUPERCITY.....LIVING, REIMAGINED!**



GRAND

5 BHK LUXURIOUS BUNGALOWS

If your taste lies for something ideal and something marvelous, you search ends with supercity grand. Step in the most idealistic lifestyle where life meets style and additional opulence. Cherish your life and its moments in comprehensively designed homes that keep your private affairs confidential and also lets you revel in the space and plush amenities once you decide to step outside.

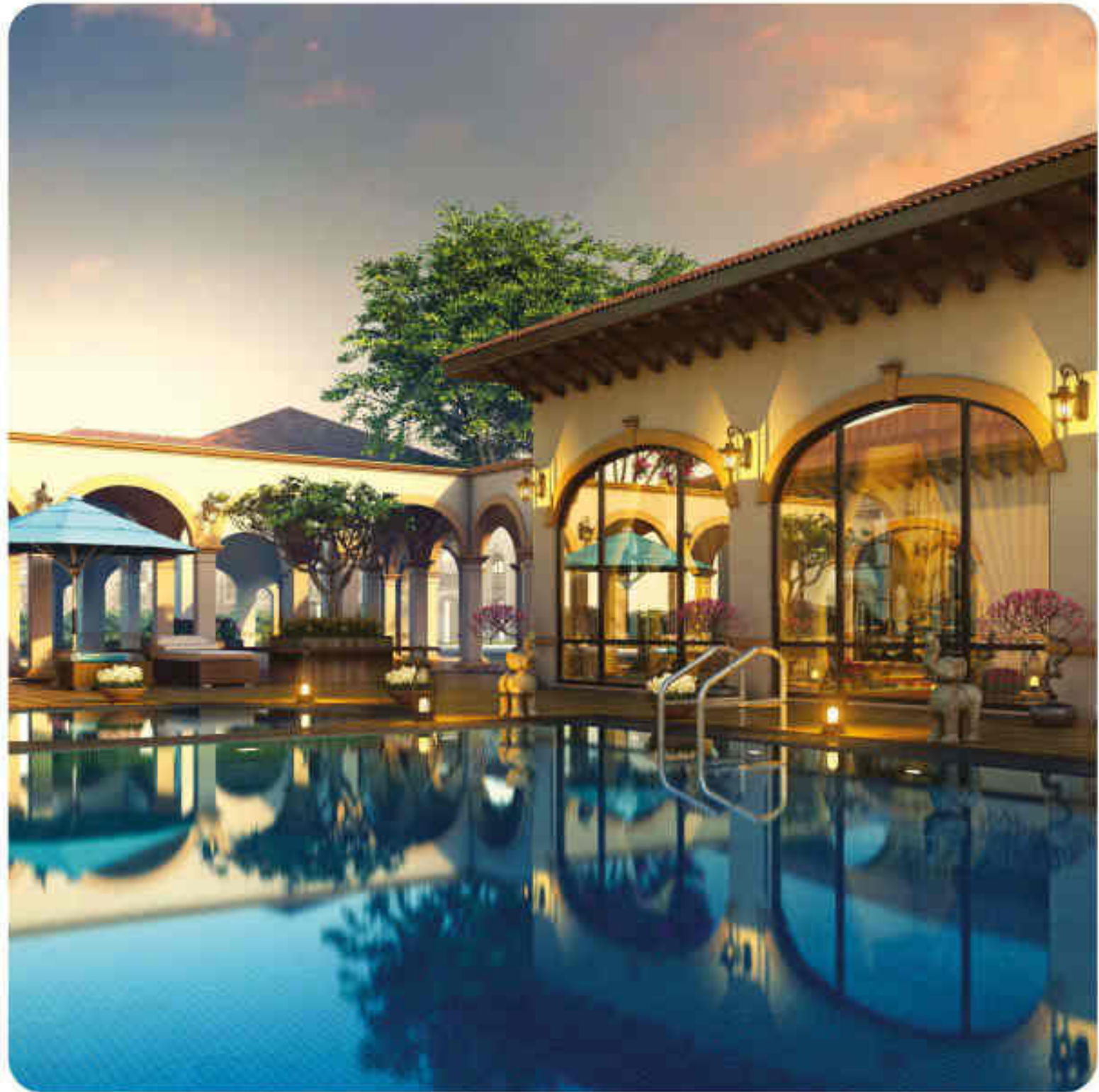




GRAND
5 BHK LUXURIOUS BUNGALOWS









AMENITIES



EXQUISITE
LANDSCAPED GARDEN



CHILDREN'S PLAY AREA



WATER BODIES, LOTUS POND
PLEASANT SIT OUTS



CLUB HOUSE WITH FULLY EQUIPPED
GYMNASIUM & STEAM ROOM



MULTIPURPOSE ACTIVITIES
ROOM & INDOOR GAMES



YOGA DECK



INDOOR
HOME THEATRE



SWIMMING POOL &
KIDS POOL



VOLLEYBALL COURT,
HALF BASKETBALL COURT



DG BACK UP SYSTEM FOR
COMMON AMENITIES



SPECIFICATIONS

FLOORING

| | |
|-------------------|--|
| LIVING / DRAWING | Premium Vitrified tiles / Italian Marble |
| BED ROOM | Wooden flooring in two master bedroom & vitrified tiles/ Italian Marble in other bedrooms |
| KITCHEN | Vitrified tiles flooring Granite platform with SS Sink with drain board Glazed tiles above platform up to lintel level Kota stone shelves in store room Kota stone floor in wash area Premium vitrified tiles |
| BALCONY / TERRACE | Rustic tiles |

DOORS

| | |
|-------------|--|
| MAIN DOOR | Polished natural veneer with night latch |
| OTHER DOORS | Polished flush doors |

WINDOWS

| | |
|---------|--------------------------------------|
| WINDOWS | Wooden frames with openable shutters |
|---------|--------------------------------------|

TOILETS

| | |
|---------|--|
| TOILETS | Ceramic tiles upto lintel level Hot & cold water supply line High quality plumbing fixtures & sanitary wares |
|---------|--|

ELECTRIFICATION

| | |
|-----------------|---|
| ELECTRIFICATION | 3 phase concealed ISI copper wiring Modular switches, M.C.B. Distribution panel, A.C, TV & telephone points |
|-----------------|---|

COLOUR

| | |
|--------|--|
| COLOUR | Internal putty finish External 100% acrylic paint |
|--------|--|

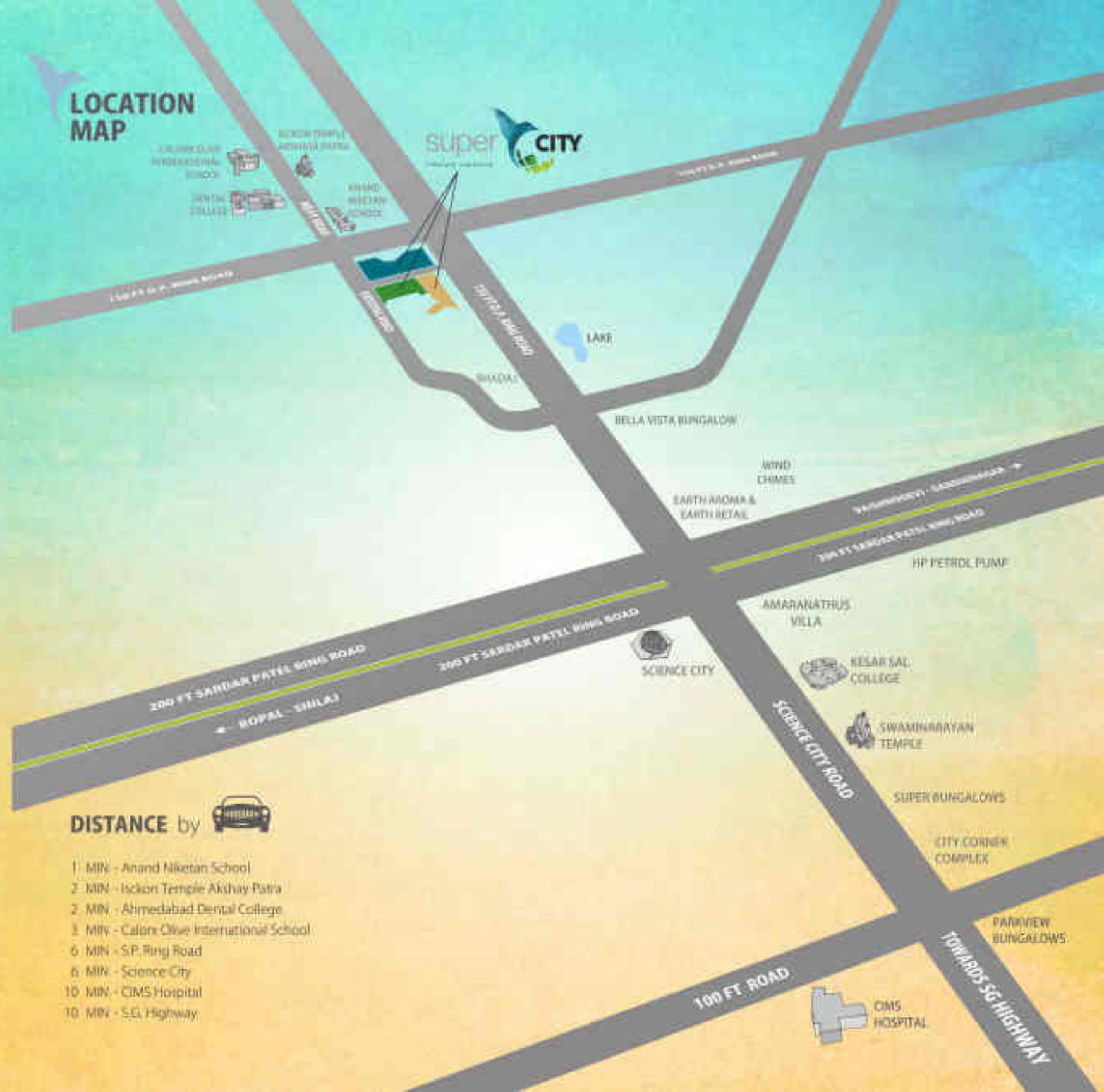
SECURITY

| | |
|----------|---|
| SECURITY | CCTV surveillance through out the society, Intercom facilities |
|----------|---|

Disclaimer

• Within the permissible law and limit the developers reserve the right to change the specification etc.

LOCATION MAP



DISTANCE by

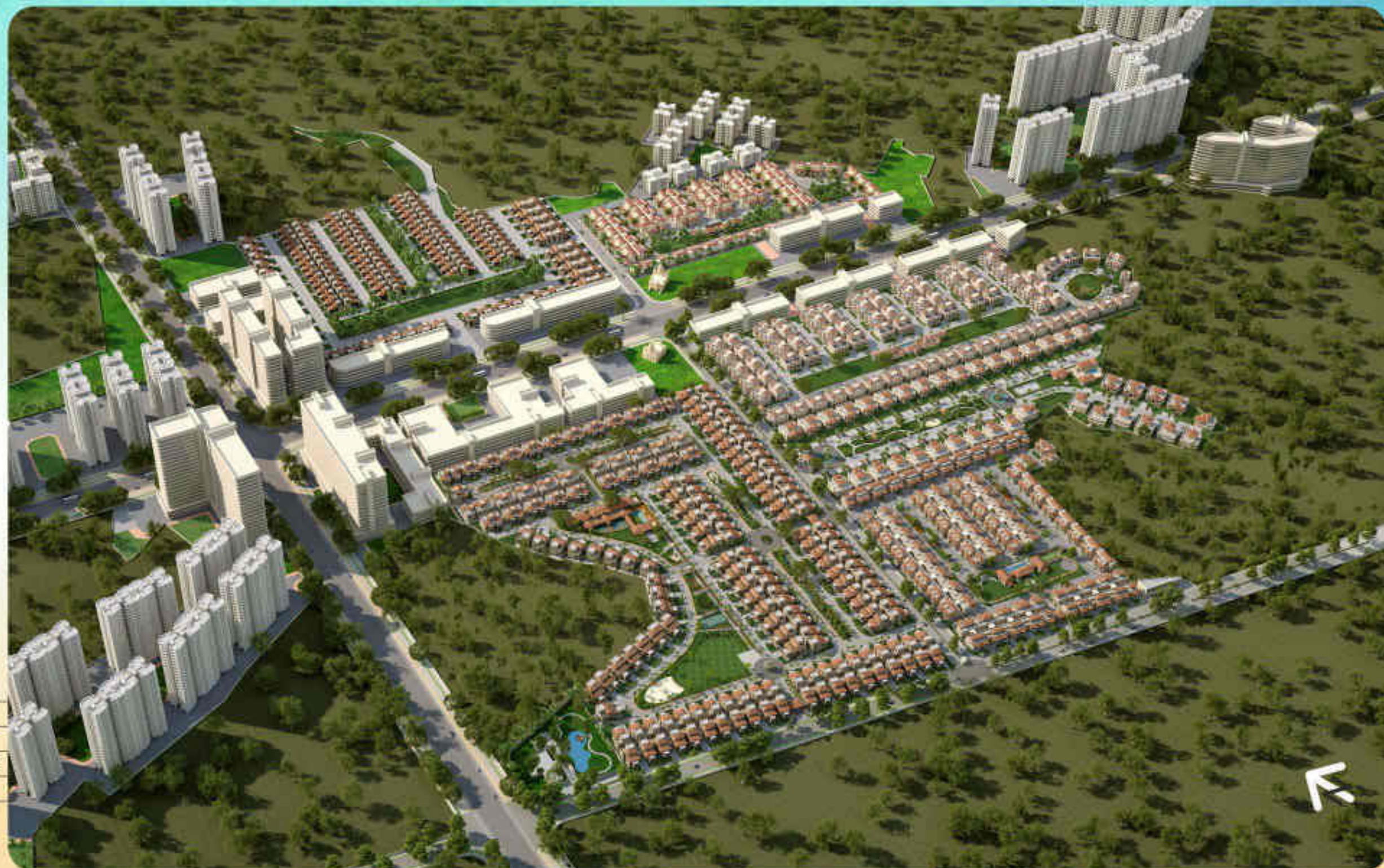


- 1 MIN - Anand Niketan School
- 2 MIN - Iscon Temple Akhaya Patra
- 2 MIN - Ahmedabad Dental College
- 3 MIN - Calore Olive International School
- 6 MIN - S.P. Ring Road
- 6 MIN - Science City
- 10 MIN - CIMS Hospital
- 10 MIN - S.G. Highway

PROPOSED

super CITY

lifestyle township



ACCESS the key to comfort

WARMTH OF A HOME / CONVENIENCE OF TOWN

SERENITY OF NATURE / AMENITIES OF A CITY

A SAFE HAVEN / AN EVEN VIBRANT NEIGHBOURHOOD

A PEACEFUL PLACE TO RELAX / A LIVING HUB TO SOCIALIZE

VALUE FOR MONEY / OWNER'S GRAND

It's the Best of Both worlds in one Super**CITY!**