



Shyam120

2 BHK Living & Shops

: SITE ADDRESS :

SHYAM 120, Lambha Mandir Road,
Opp. Khajuriya Hanuman Mandir, New TP Road,
Nr. Akshar Villa Bunglows, Lambha - 382405.

DEVELOPER

Sadguru
PROJECTS

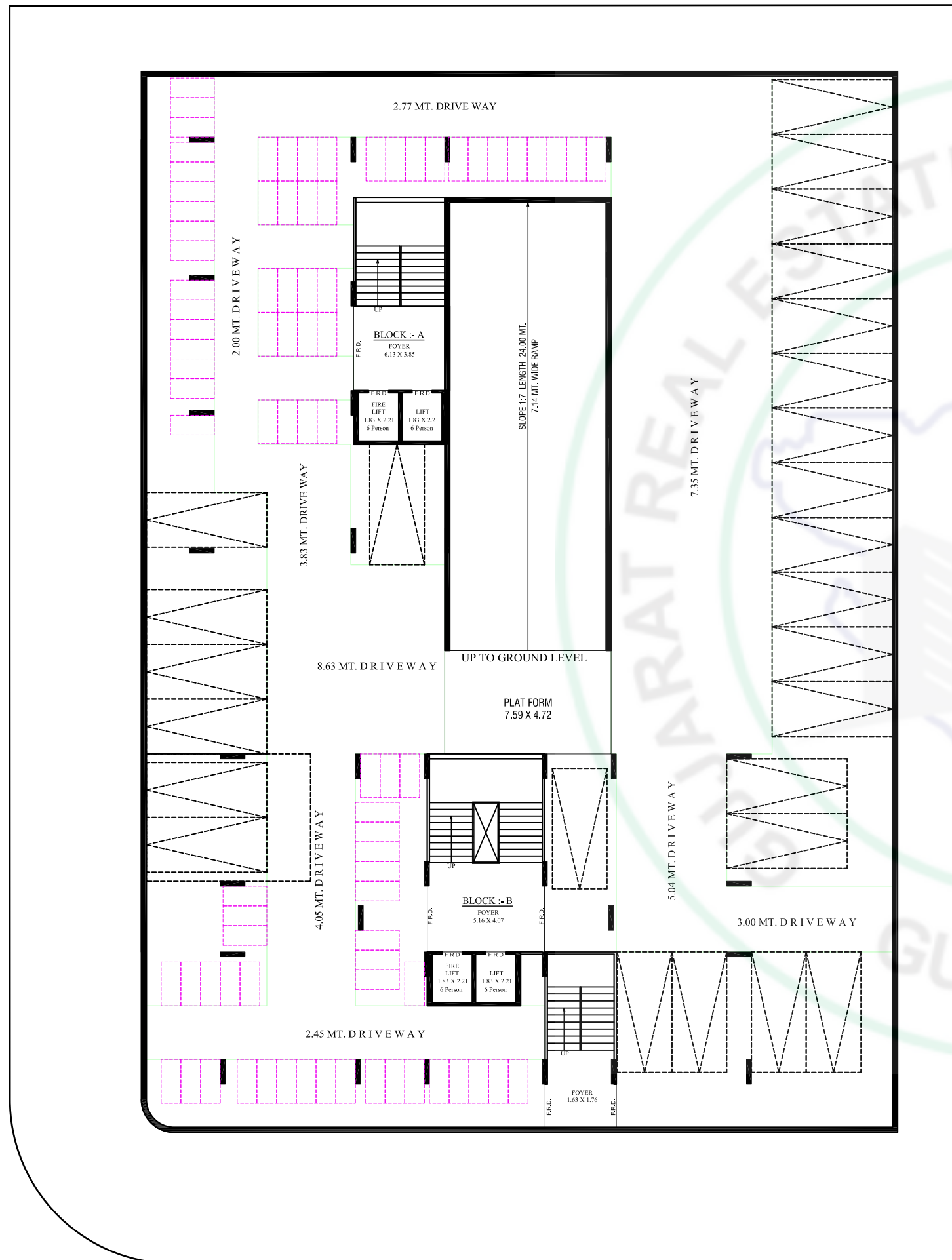
ARCHITECT

'un studio'
titled,
Architects + Interior & Product Designer
9033002573

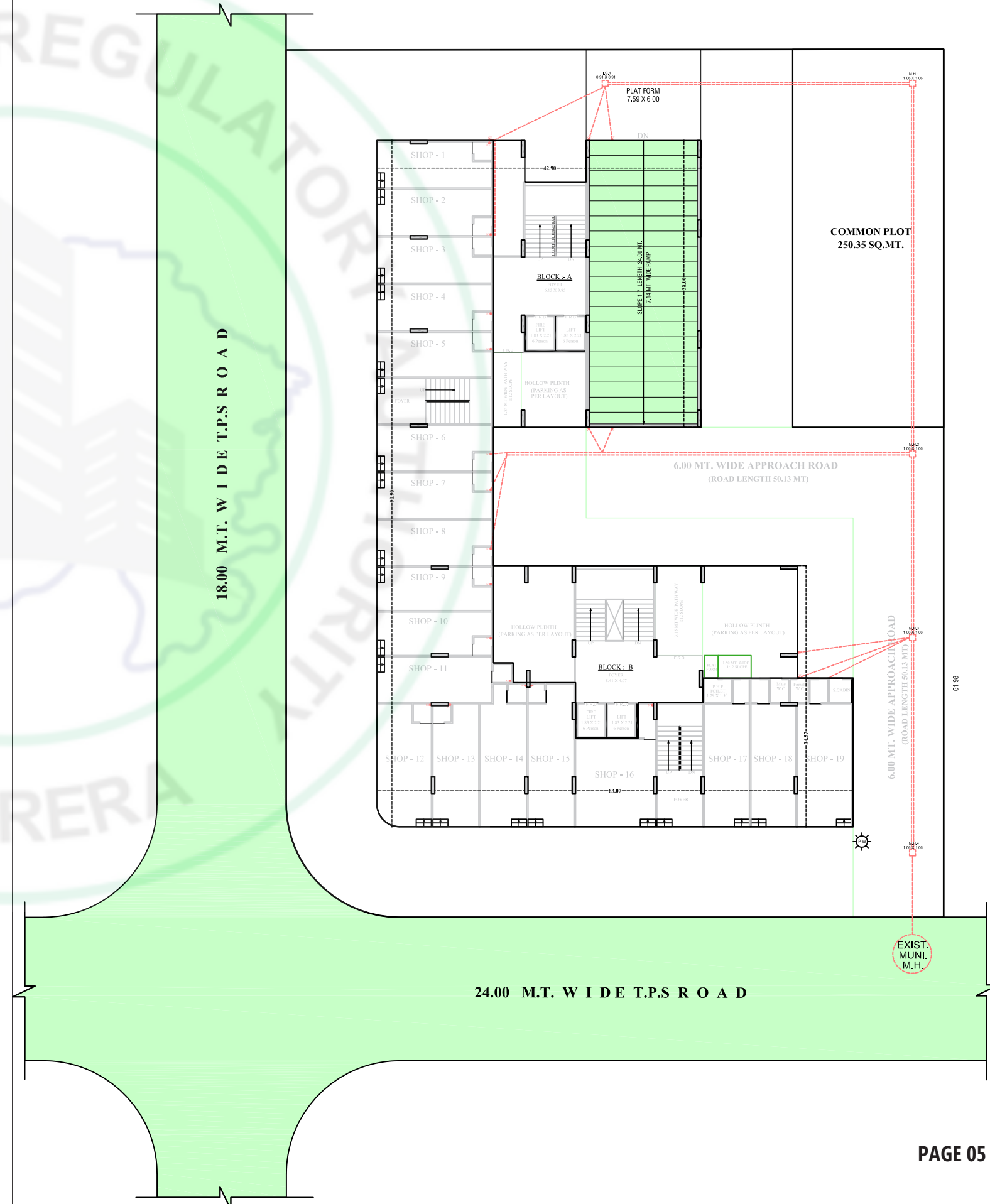
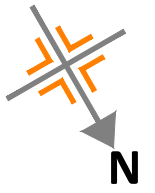
RERA NO. : _____
WEBSITE : www.gujrera.gujarat.gov.in

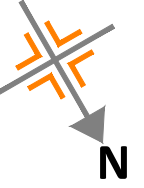


BASEMENT

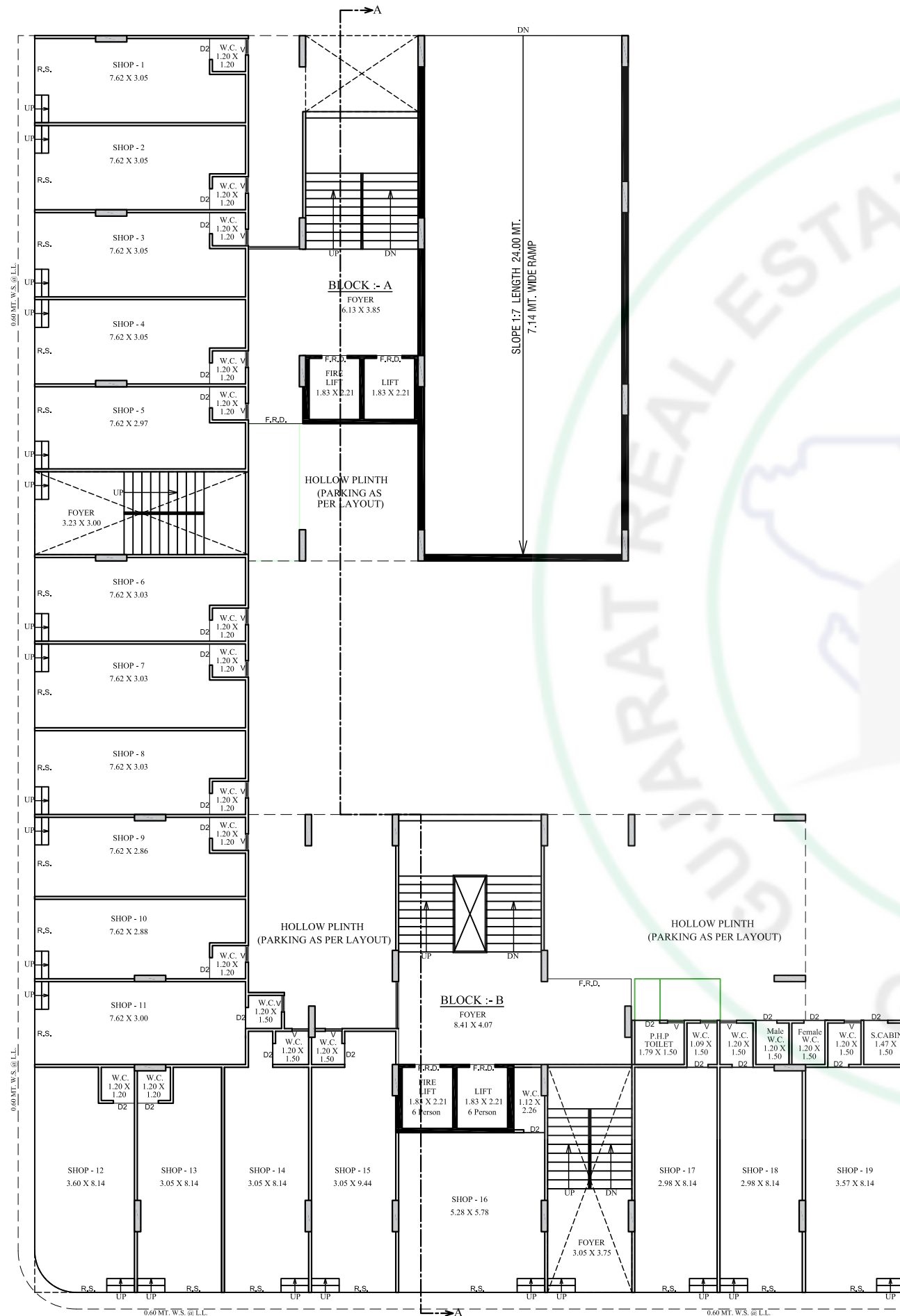


LAYOUT PLAN

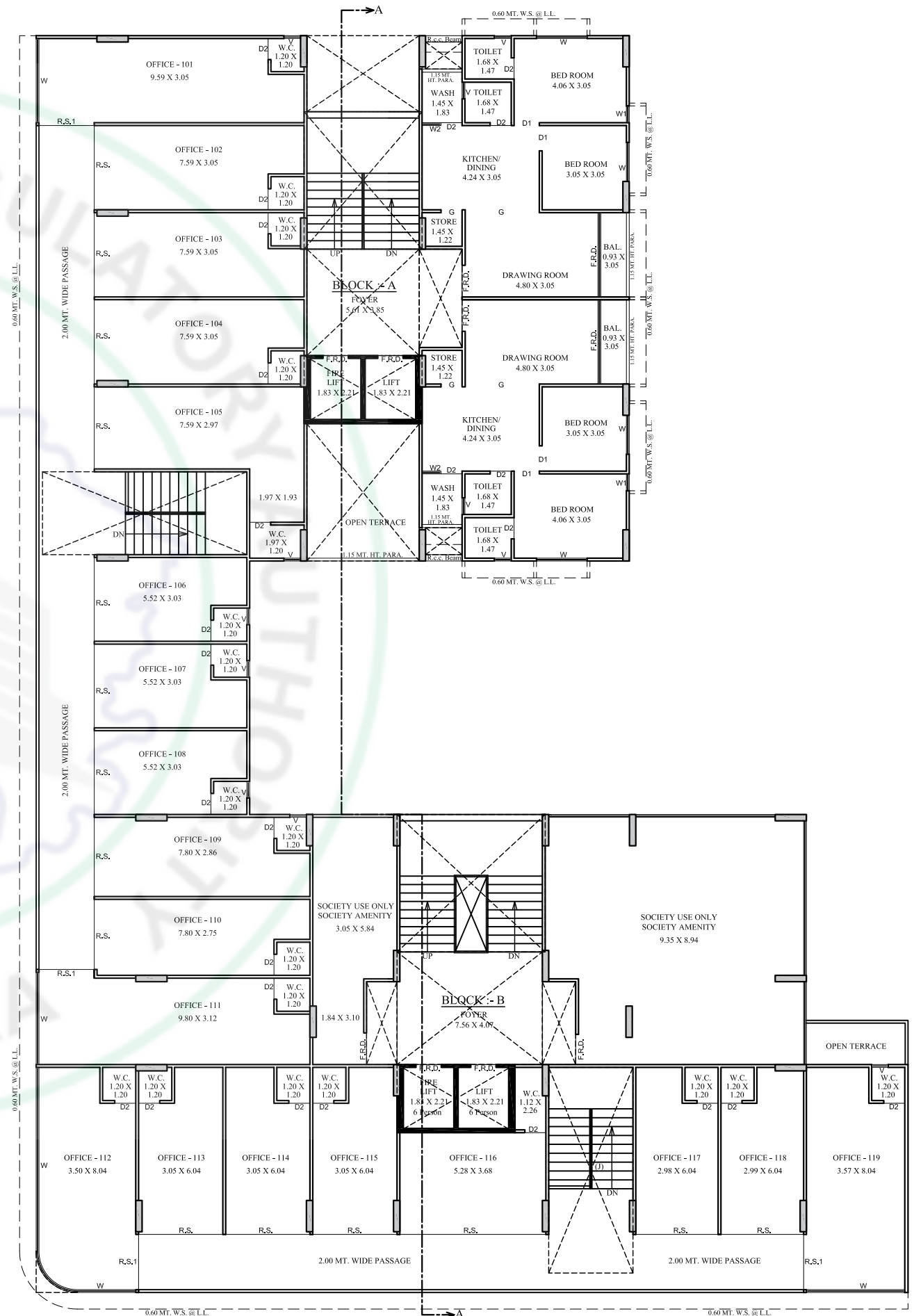


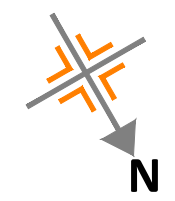


GROUND FLOOR PLAN

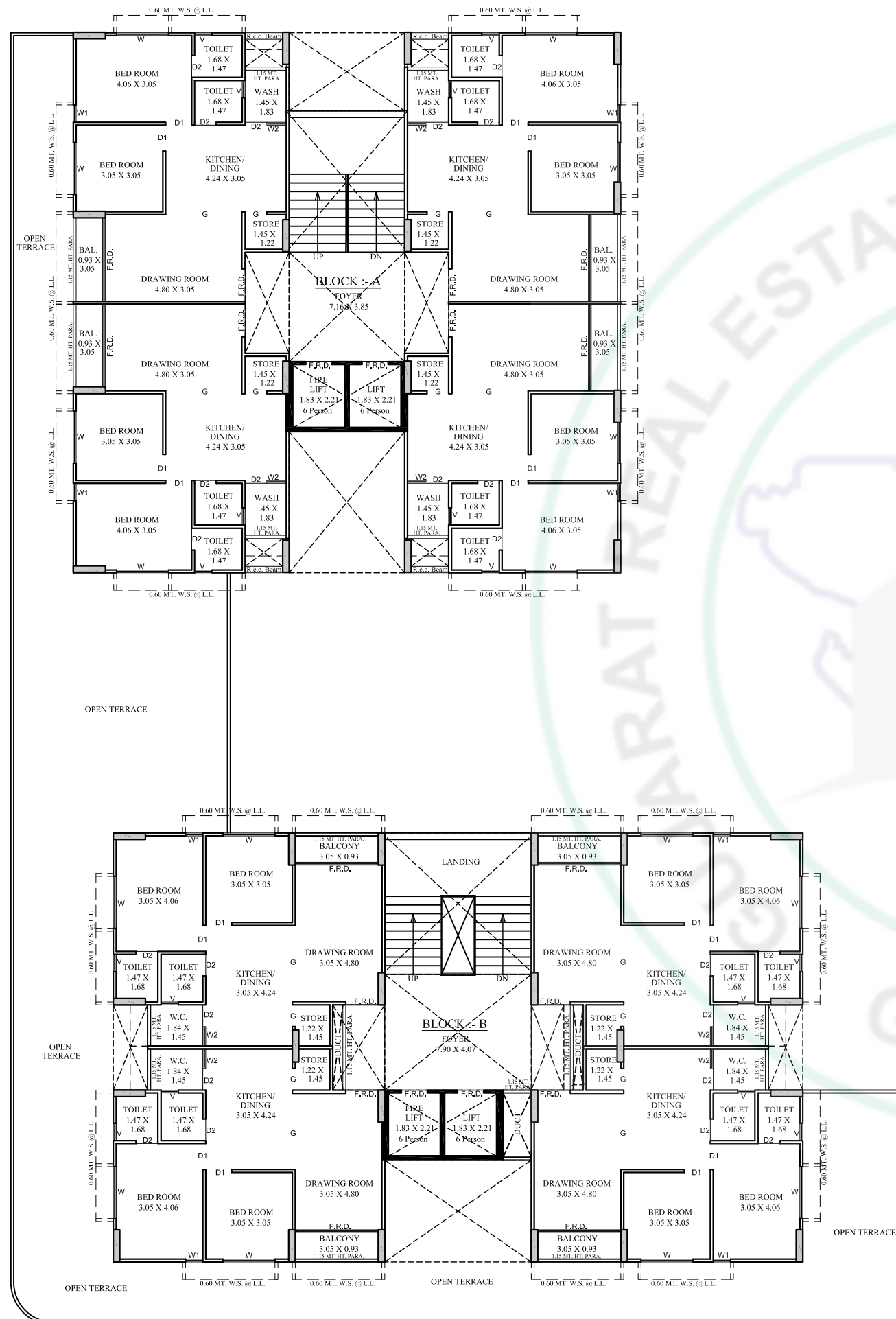


FIRST FLOOR PLAN

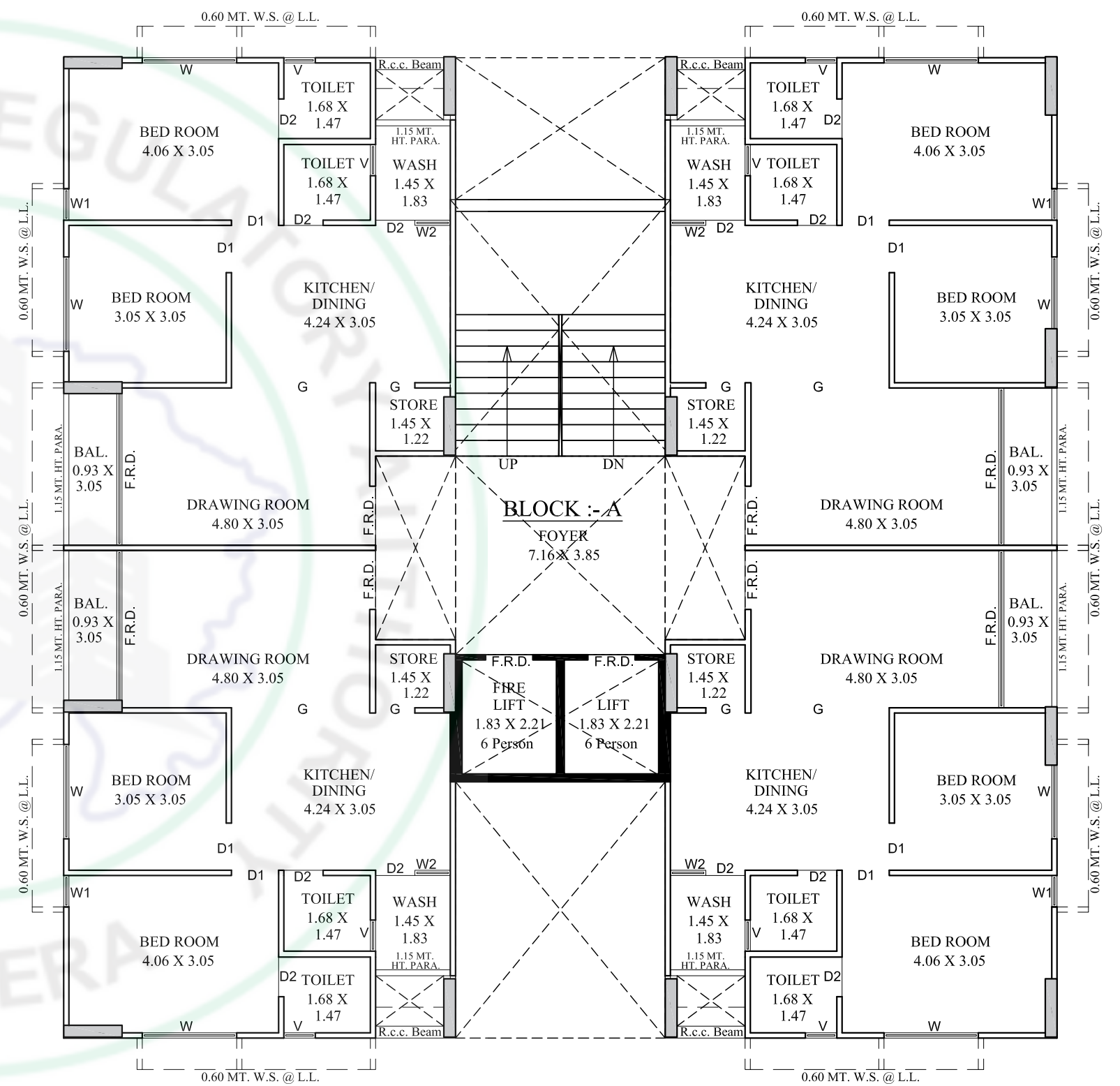




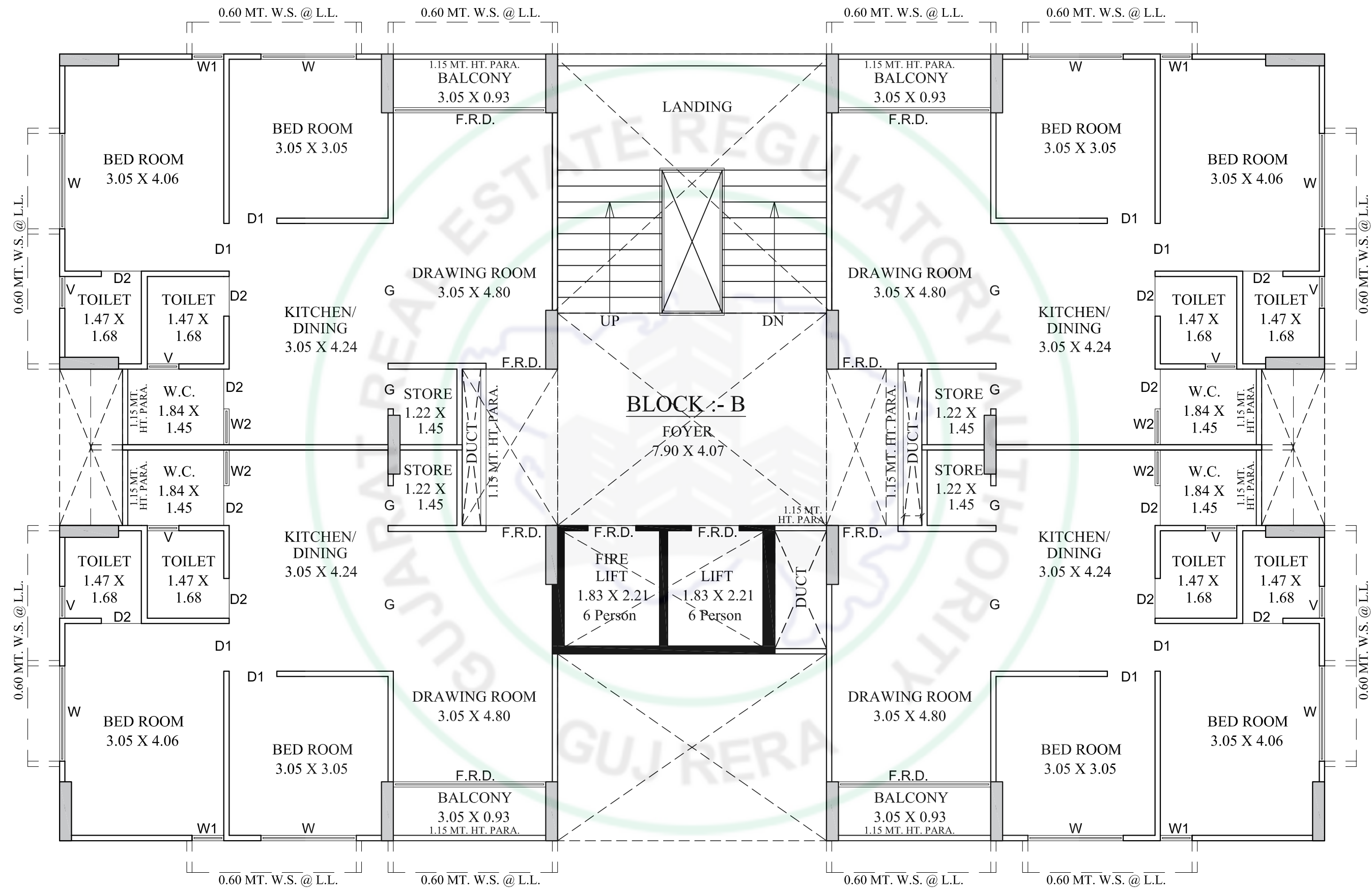
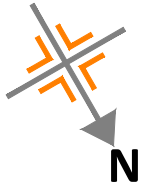
SECOND FLOOR PLAN



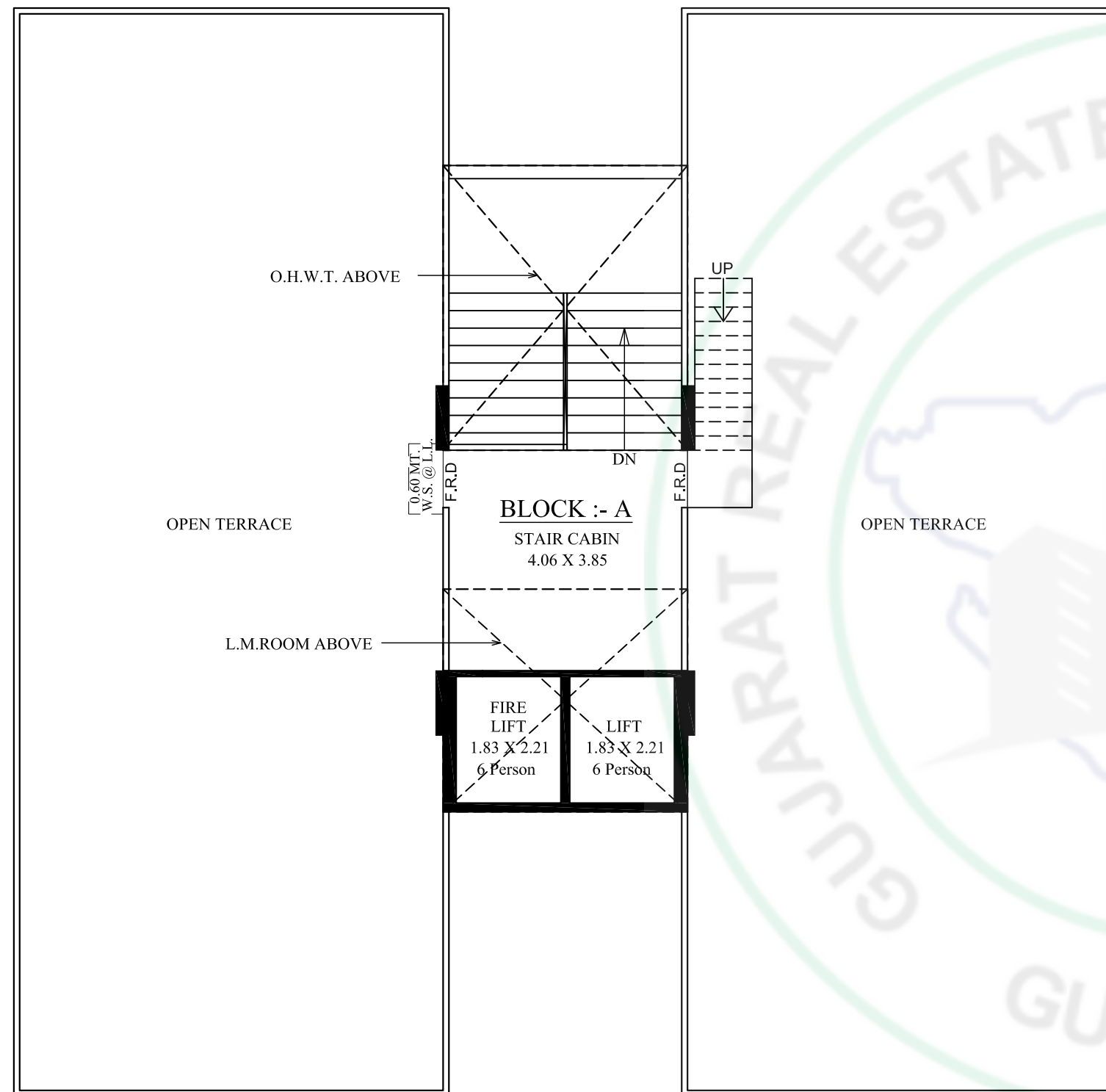
BLOCK A TYPICAL FLOOR 3RD TO 11TH FLOOR



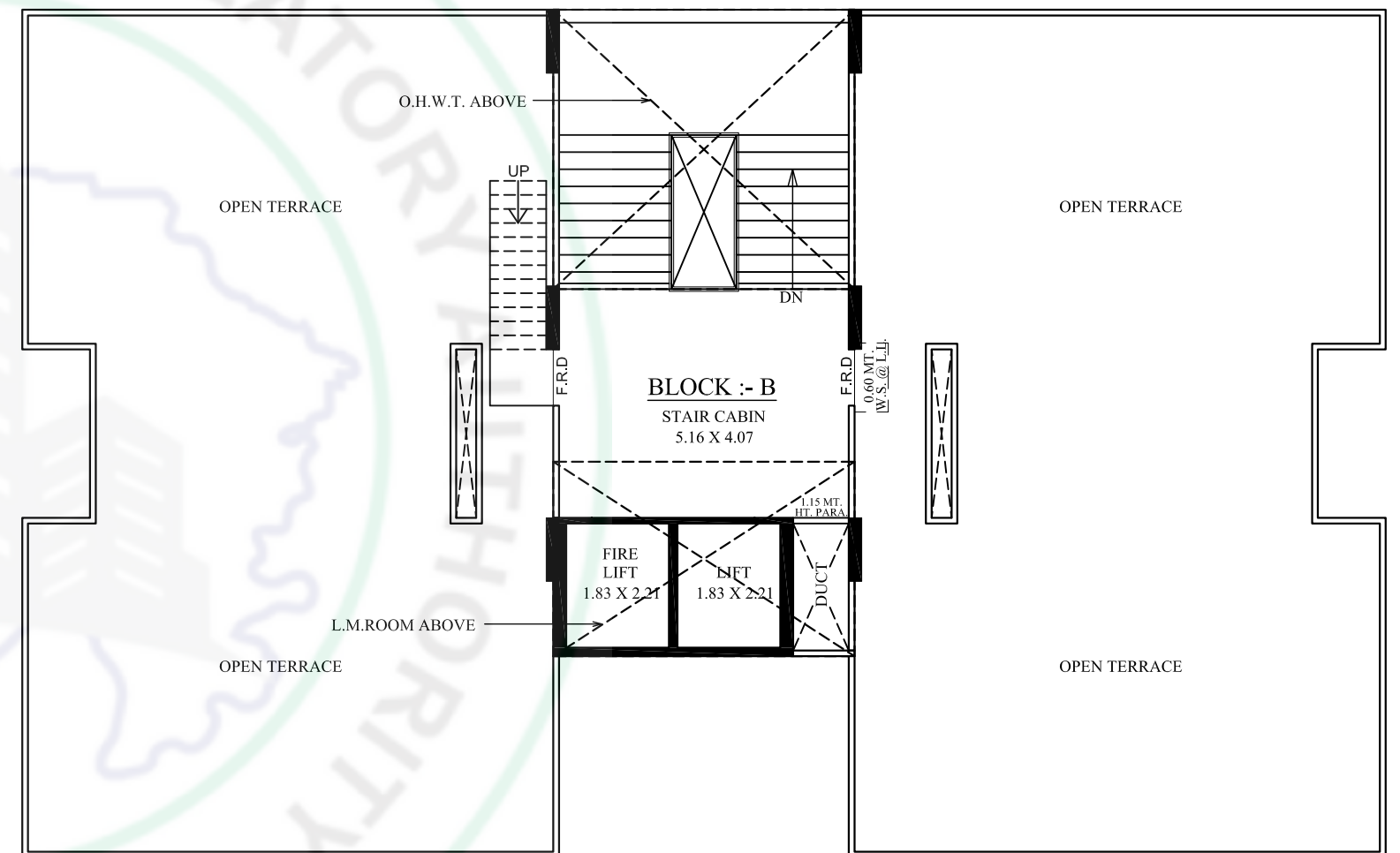
**BLOCK B TYPICAL FLOOR
3RD TO 11TH FLOOR**



BLOCK A TERRACE FLOOR PLAN



BLOCK B TERRACE FLOOR PLAN



SPECIFICATION

STRUCTURE

Earthquake resistant R.C.C. frame structure as per new by laws.

FIRE SAFETY

Fire Safety System Facilities

TERRACE

Brick-bat concrete with china mosaic for heat reflection and thermal insulation.

TOILET

Designer tiles on floor and walls up to lintel level.
Branded sanitary & bath fittings.

PLUMBING

ISI CPVC and UPVC pipes for water supply, PVC & SWR pipes for solid waste and drainage systems.

ELECTRIFICATION

Branded ISI modular switches with concealed copper wiring and adequate number of points. MCB distribution panel.

KITCHEN

Mirror polished granite platform with S.S. sink, designer glazed tiles up to lintel level.

DOORS & WINDOWS

Decorative main door & other flush doors with wooden frame. All windows in aluminum section with granite frame.

WALL FINISH / ELEVATION

External double coat mala plaster with texture & acrylic paint. Internal mala plaster with wall putty

FLOORING

Vitrified tiles for entire flooring in all apartments.

: SITE ADDRESS :

SHYAM 120, Lambha Mandir Road,
Opp. Khajuriya Hanuman Mandir, New TP Road,
Nr. Akshar Villa Bunglows, Lambha - 382405.

DEVELOPER

Sadguru
PROJECTS

ARCHITECT

'un studio'
titled,
Architects + Interior & Product Designer
9033002573

