

**LOCATION MAP :**



Proposed TMC garden & Sports Complex | Radiant English High School & Jr. Collage - 1 min | Marriage AC hall - 5 mins  
 Uttarshive Market - 5 mins | Mubarak Bagh - 5 mins | Shimla Park, Talavpali - 5 mins



**Sky Valley Site Address:**

Behind Grace Square, Opp. Rainbow Palm,  
 Kausa - Mumbra. Thane (w) - 400 612.  
 Email: dinaardevelopers786@gmail.com

P51700055139

**ARCHITECT**  
 Mr. Anil Jagwani  
 M/S. 10 Fold Architects & Consultants

**ADVOCATE & LEGAL ADVISOR:**  
 Mr. Jamshed Azmi  
 M/s Azmi Associates  
 Thane - 400612  
 Mob. : +91 97570 20329

**RCC CONSULTANTS:**  
 Mr. Ajay Mahale, 203, Irani Bldg.  
 SantDyaaneshwar Marg  
 Opp. TMC, Panchpakhadi,  
 Thane (w)- 400 602.  
 Tel: 2543 5628.

**9769 123 091**  
**9769 123 177**  
 dinaardevelopers786@gmail.com

The information contained in this brochure is indicative of the development that proposed. Subject to the approval of authorities or in the interest of continuing improvement the developers reserve the right to change plans, specifications or features without prior notice or obligation.



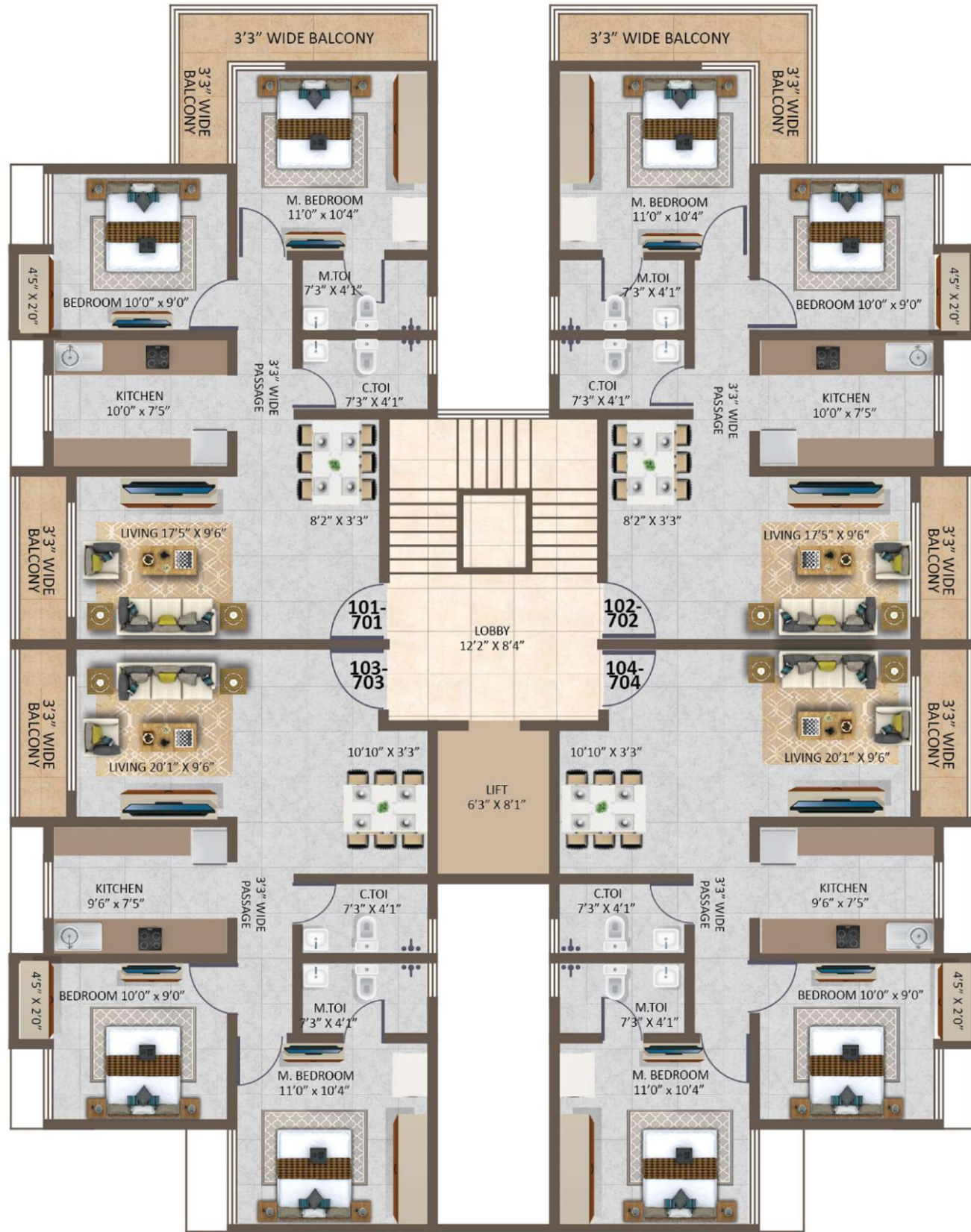
*Sky Valley*



**Behind Grace Square,  
 Opp. Rainbow Palm,  
 Kausa, Mumbra, Thane - 400612.  
 769 123 091 • 9769 123 177  
 dinaardevelopers786@gmail.com**



# TYPICAL FLOOR PLAN BLDG 1



# TYPICAL FLOOR PLAN BLDG 2



# TYPICAL FLOOR PLAN BLDG 3

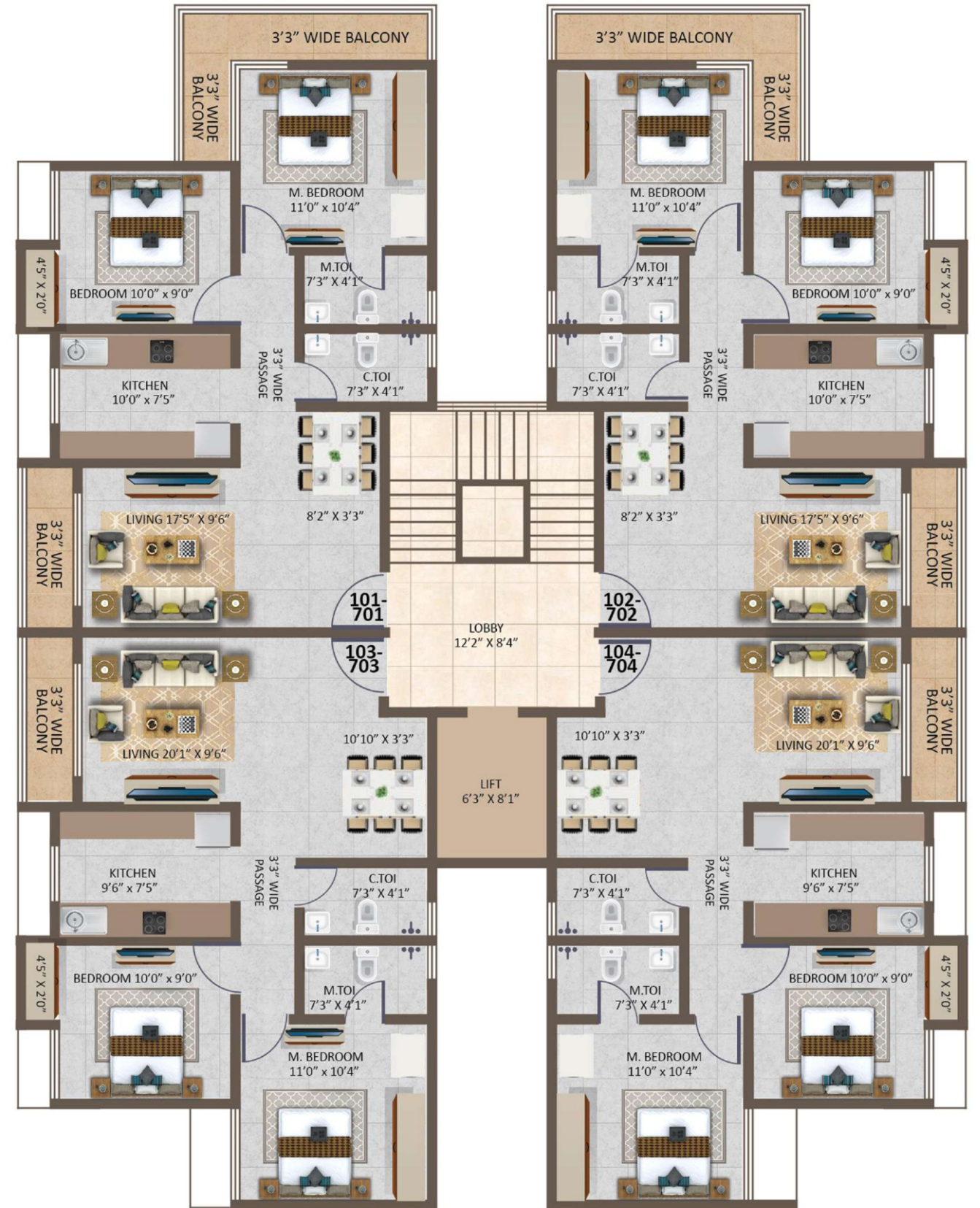
# TYPICAL FLOOR PLAN BLDG 4



# TYPICAL FLOOR PLAN BLDG 5



# TYPICAL FLOOR PLAN BLDG 6



## Ongoing & Completed

### Ongoing & Completed PROJECT BY US



**SAFFRON ENCLAVES**  
7 STORED TOWERS, MUMBRA STATION  
PROJECT COMPLETED (O.C. RECEIVED)



**EDEN PARK**  
7 STORED TOWERS, OPP. METRO STATION  
TALOJA  
PROJECT COMPLETED (O.C. RECEIVED)



**CROWN RESIDENCY**  
7 STOREY, 3 TOWERS, KAUSA  
(ON GOING PROJECT)



**AALISHAN ARCADE / AALISHAN SQUARE**  
SHOPPING CENTER & RESIDENTIAL  
THEATRE  
OPP. MUMBRA STATION  
(ON GOING PROJECT)



**DZCITY**  
22 STOREY, 3 TOWERS, KAUSA  
(ON GOING PROJECT)



**GRACE SQUARE**  
22 STOREY, 2 TOWERS, KAUSA  
(ON GOING PROJECT)

#### TECHNICAL AMENITIES

Additional amenities that complex your life **14000 Sq.ft. GARDEN**



24 X 7 Gated security



CCTV



Rainwater Harvesting



Diesel Power Backup for Common Areas



Branded Elevators



Solar Panels



Fire Safety



Club house



Community Hall



Gymnasium

INDOOR GAMES AND MANY MORE FACILITIES

#### GROUND FLOOR PLAN

