

PUNAWALE

Product Deck

CONTENTS

A scenic view of a paved road winding through a lush green forest. The road is dark asphalt with white dashed lines, curving gently to the right. The trees are tall and dense, with vibrant green and yellow foliage, suggesting an autumn setting. The overall atmosphere is peaceful and natural.

1. OVERVIEW

2. LOCATION STUDY

3. PROJECT DETAILS

4. AMENITIES

5. FLOOR PLANS

6. UNIT PLANS

7. PRICE & BENEFITS

OVERVIEW :

Strategically located off the Pune-Mumbai Expressway, Punawale has emerged as a flourishing real estate hotspot in West Pune. Punawale is popular with both homebuyers and rental housing tenants, making it an ideal investment destination. What works in its favor are affordability and easy connectivity to key areas in PCMC and Pune City, including the infotech hotbed of Hinjewadi - which employs over 2.5 lakh software professionals and is growing at over 14% per annum - and other prominent locations like Baner, Balewadi, Wakad, Ravet, etc.

Like many other areas in Pune's thriving PCMC, Punawale had humble beginnings but quickly turned into a major real estate hotspot when prominent developers started building high-quality housing projects there. Today, Punawale is a major source of pride for the Pimpri-Chinchwad Municipal Corporation (PCMC).



Punawale-Ravet Basket B
(London Bridge of Pune)

Top 3 reasons to invest in Punawale



- Strategic Location: Located off the Pune-Mumbai Expressway. Offering excellent connectivity to key areas such as Hinjewadi IT Park, Wakad, and Mumbai-Pune Expressway. Surrounded by 54 acres of lush green Kate Wasti forest.
- Development and Infrastructure: The area has seen the establishment of various residential and commercial projects, along with the development of infrastructure such as roads, schools, hospitals, and shopping centers.
- Future Growth Prospects: The expanding job opportunities and a growing population can lead to increased housing demand in Punawale.

Top 3 reasons to trust us!



- 40 years legacy 40 projects delivered
- Most trusted and fastest growing real estate brand of Pune
- 1000+ Inventory sold in Punawale 10months

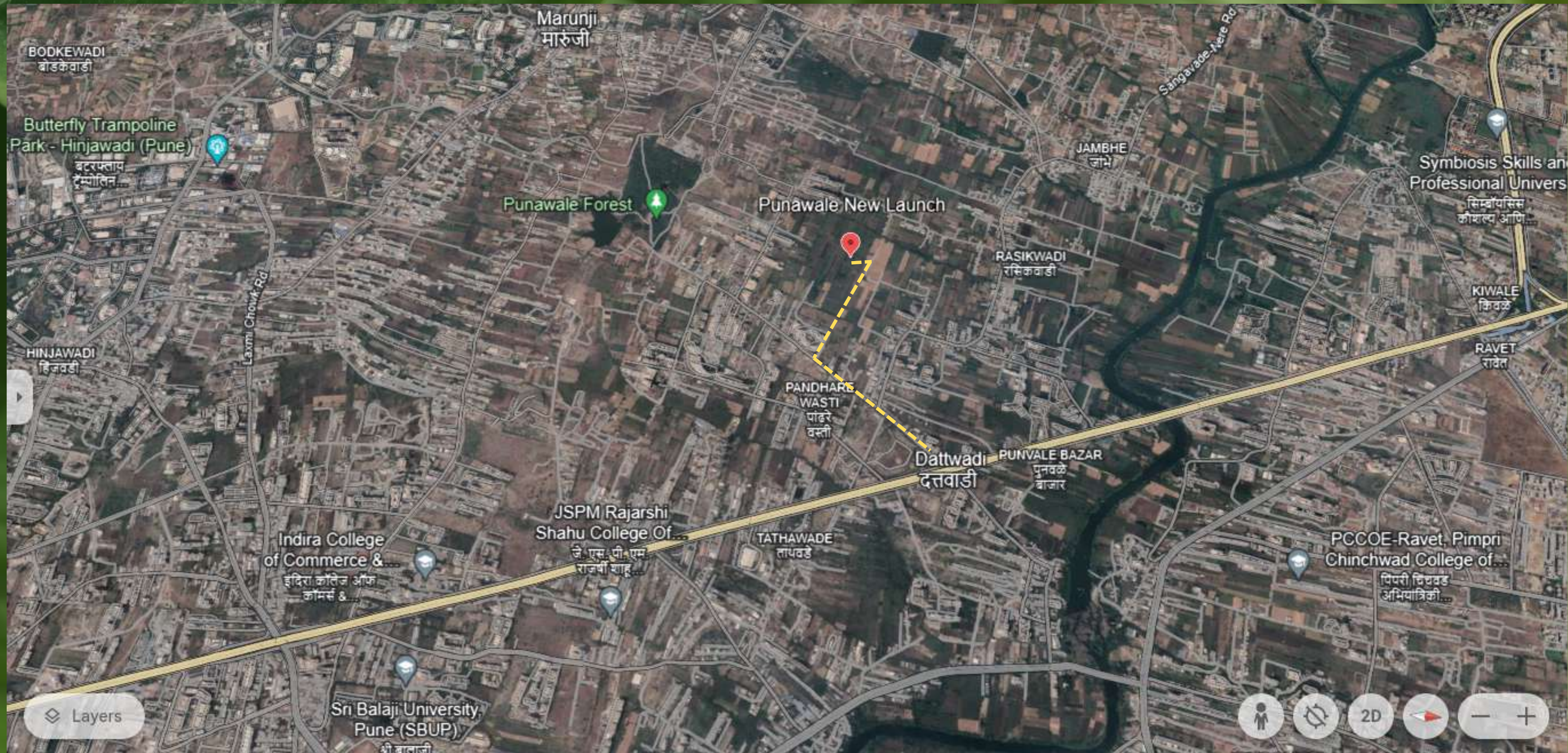
A woman with long, flowing blonde hair is seen from behind, running through a lush green field. The scene is bathed in the warm, golden light of a setting or rising sun, creating a soft, hazy atmosphere. The background shows a line of trees and a fence under a bright sky. The overall mood is one of freedom and joy.

**Get ready for the most awaited launch of
the West Pune!**

An aerial photograph of a street scene. The street is paved and has several cars parked along the side. On either side of the street, there are rows of palm trees and other greenery. The scene is brightly lit, suggesting a sunny day. The text 'LOCATION STUDY' is overlaid in the center of the image.

LOCATION STUDY

Punawale Location and Connectivity



Punawale Location Proposed Road



SHOPPING & ENTERTAINMENT

COMMUTE

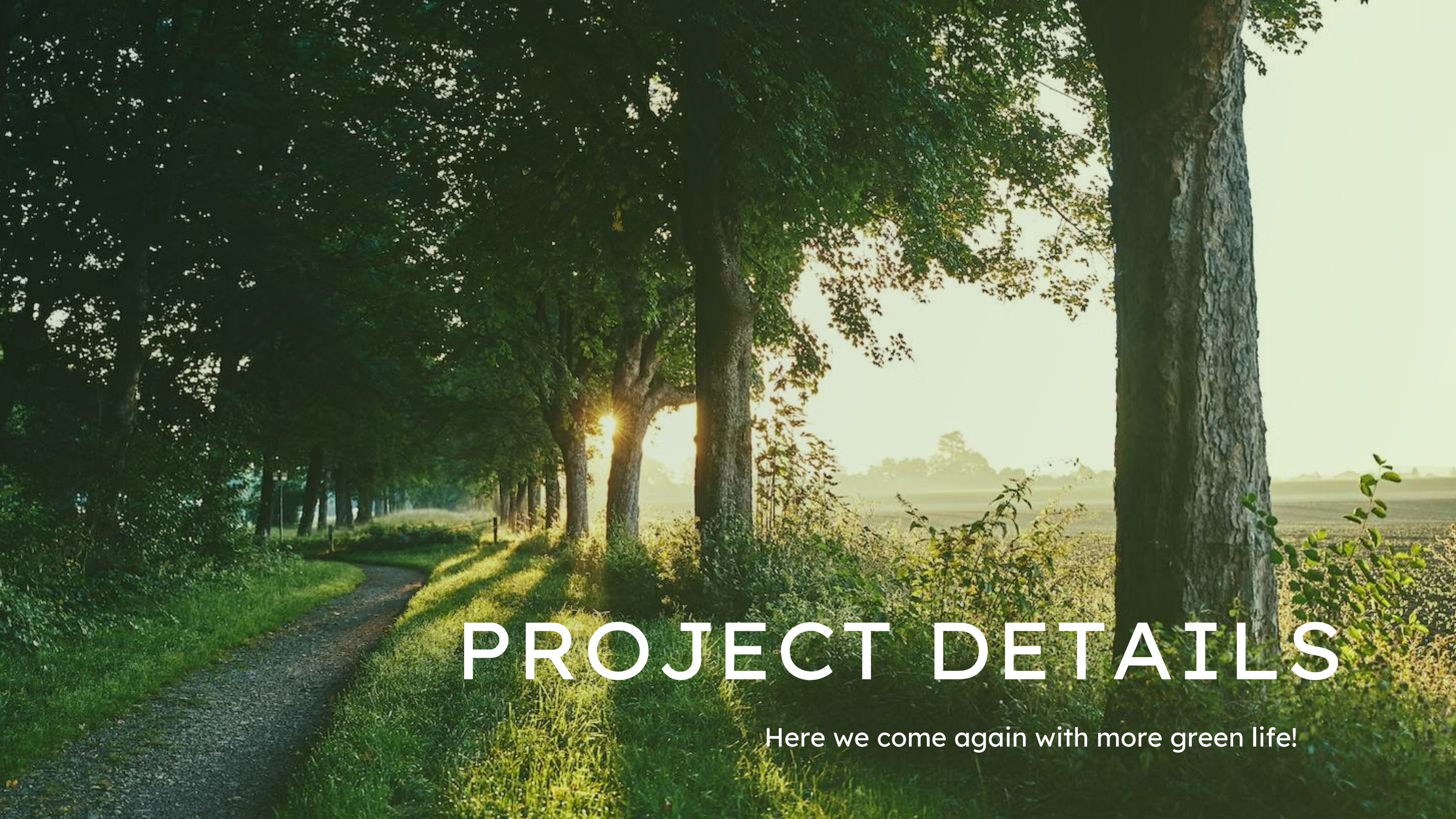
EDUCATION

IT PARKS

HOTELS

**Punawale
New
Launch**





PROJECT DETAILS

Here we come again with more green life!

MASTER PLAN



MASTER PLAN (AMENITIES)



An aerial photograph of a tennis court, which is a bright green rectangular area with white lines. The court is surrounded by a dense forest of tall, green trees. The word "AMENITIES" is written in large, white, sans-serif capital letters across the center of the image, partially overlapping the tennis court.

AMENITIES



SWIMMING POOL



GAZEBO



AMPHITHEATRE

*REPRESENTATIVE IMAGE

BASKETBALL COURT



SENIOR CITIZENS CORNER



*REPRESENTATIVE IMAGE



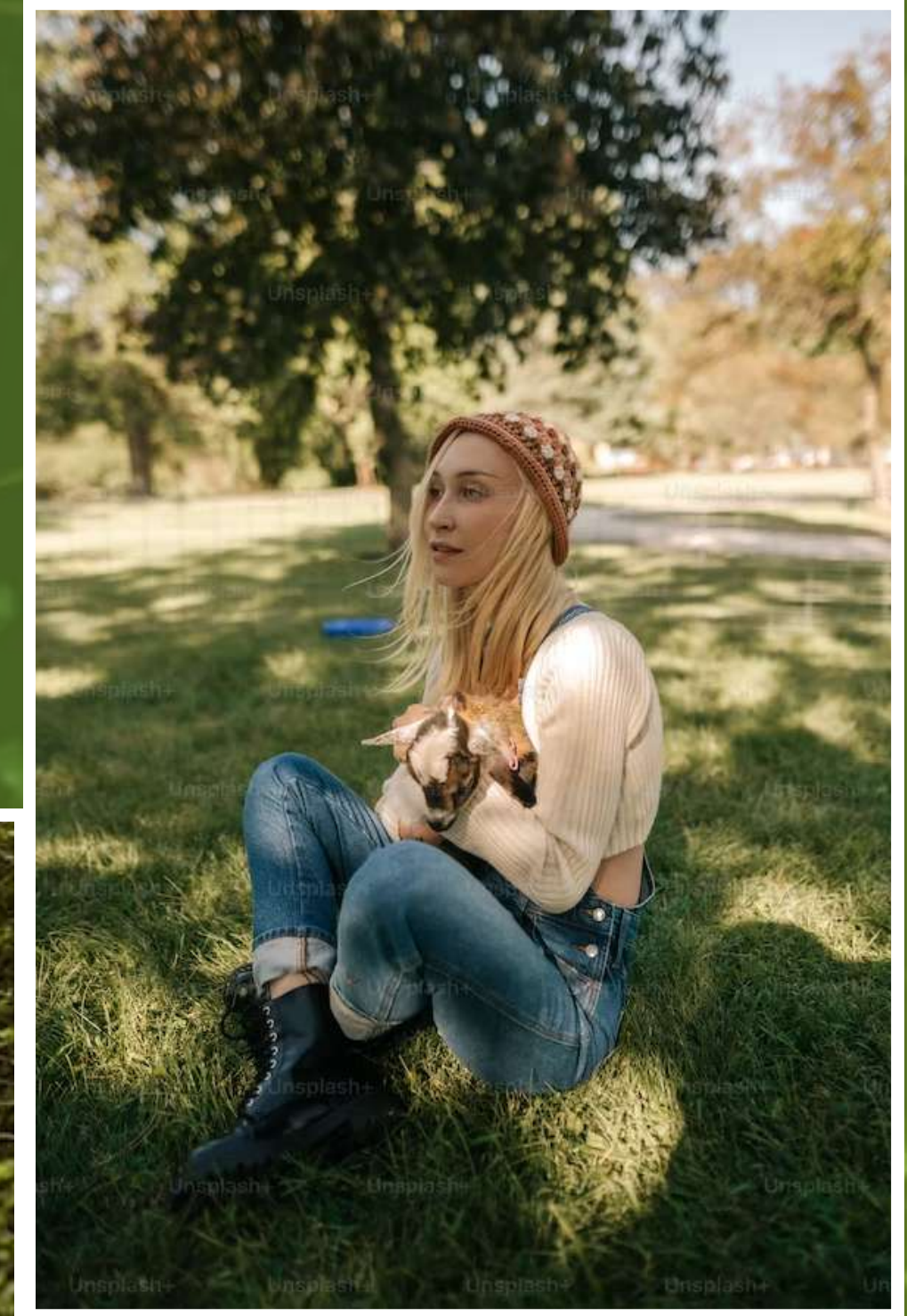
CHILDRENS PLAY AREA



NATURAL POND



WALKING TRACK



PET PARK

***REPRESENTATIVE IMAGE**

YOGA AND MEDITATION AREAS



MULTIPURPOSE HALL



GYM



FLOOR PLANS



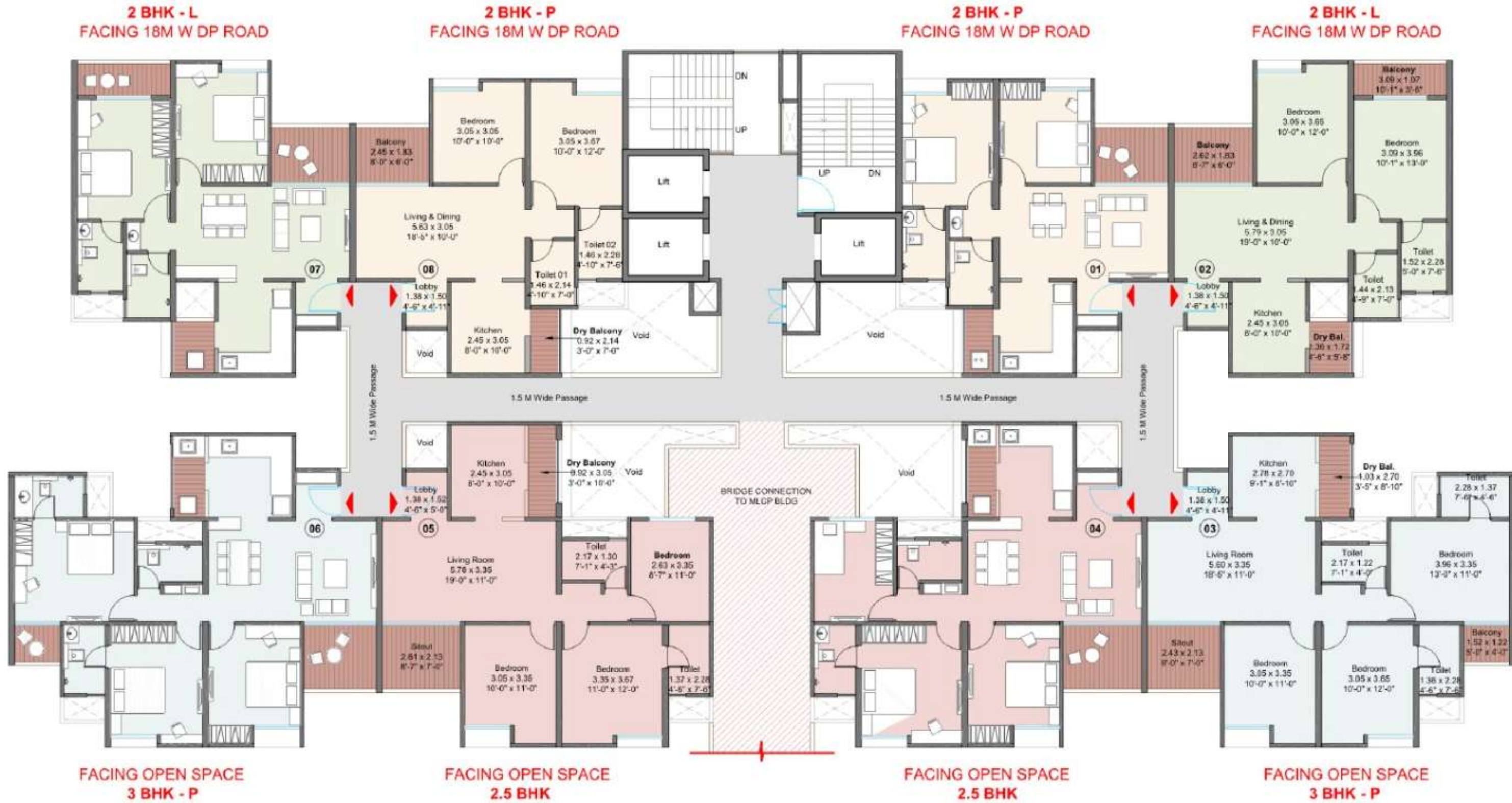
TOWER 7 - TYPICAL FLOOR PLAN



TOWER 7- FIRST FLOOR PLAN



TOWER 7- 2ND,4TH,5TH FLOOR PLAN



TOWER 7-3RD FLOOR PLAN



TOWER 7- REFUGE FLOOR PLAN



TOWER 8-TYPICAL FLOOR PLAN



TOWER 8 - FIRST FLOOR PLAN



TOWER 8- REFUGE FLOOR PLAN



TOWER 4-TYPICAL FLOOR PLAN



LOWER DUPLEX



UPPER DUPLEX

TOWER 4 - FIRST FLOOR PLAN



TOWER 4- REFUGE FLOOR PLAN



LOWER DUPLEX

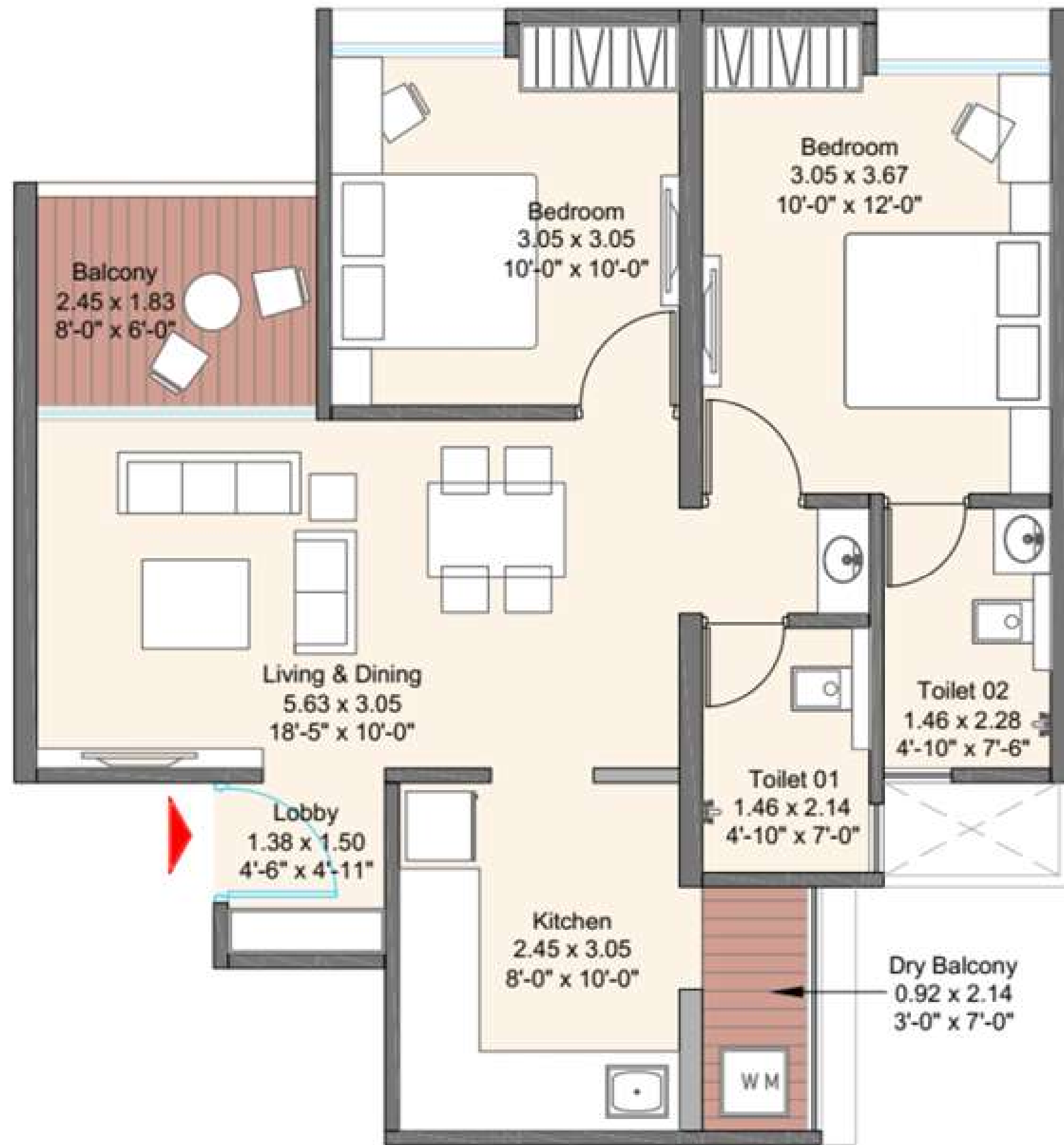


UPPER DUPLEX

UNIT LAYOUTS

A sustainable and ultra modern lifestyle awaits your decision

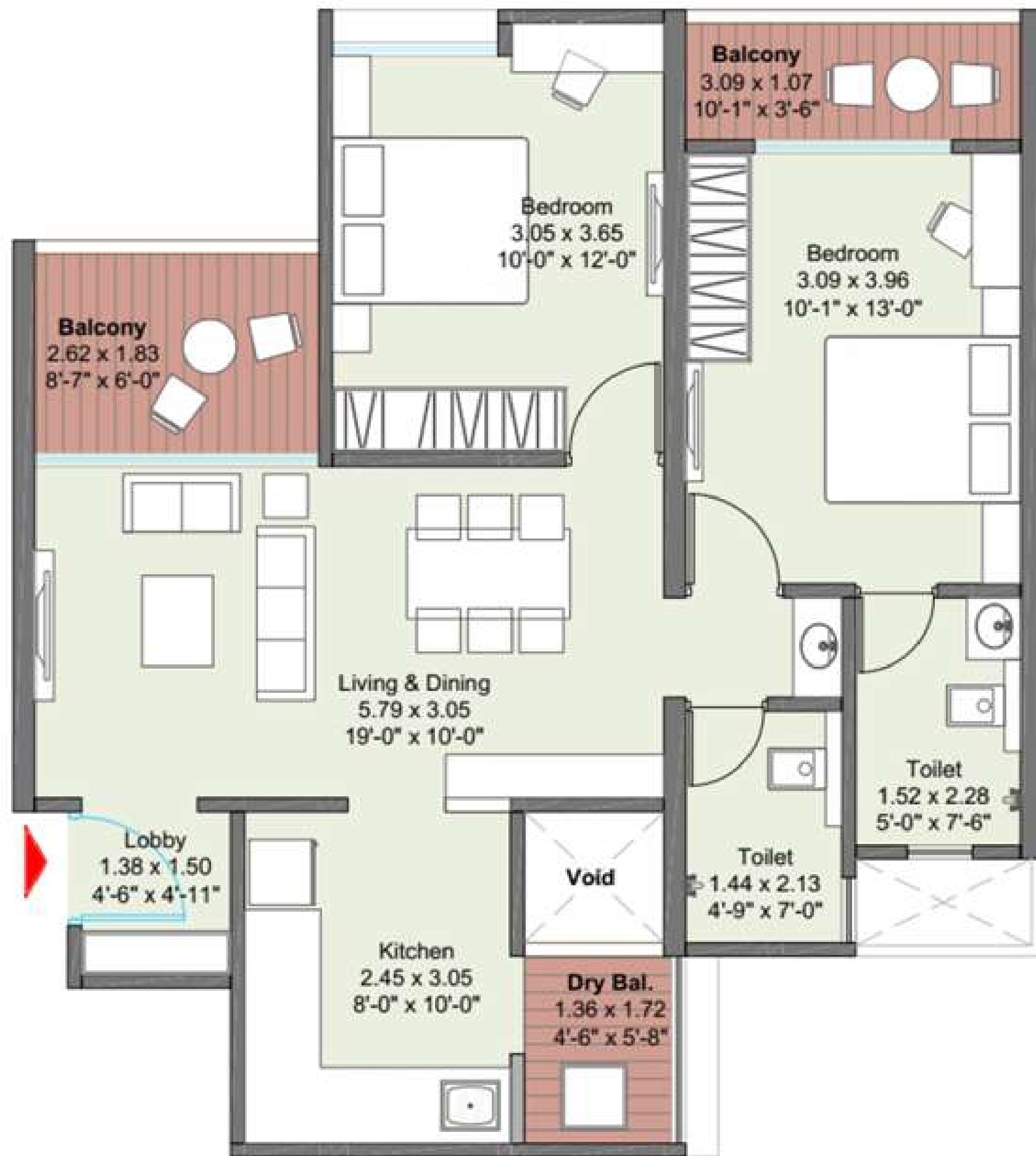




2BHK - PREMIUM

CARPET AREA:

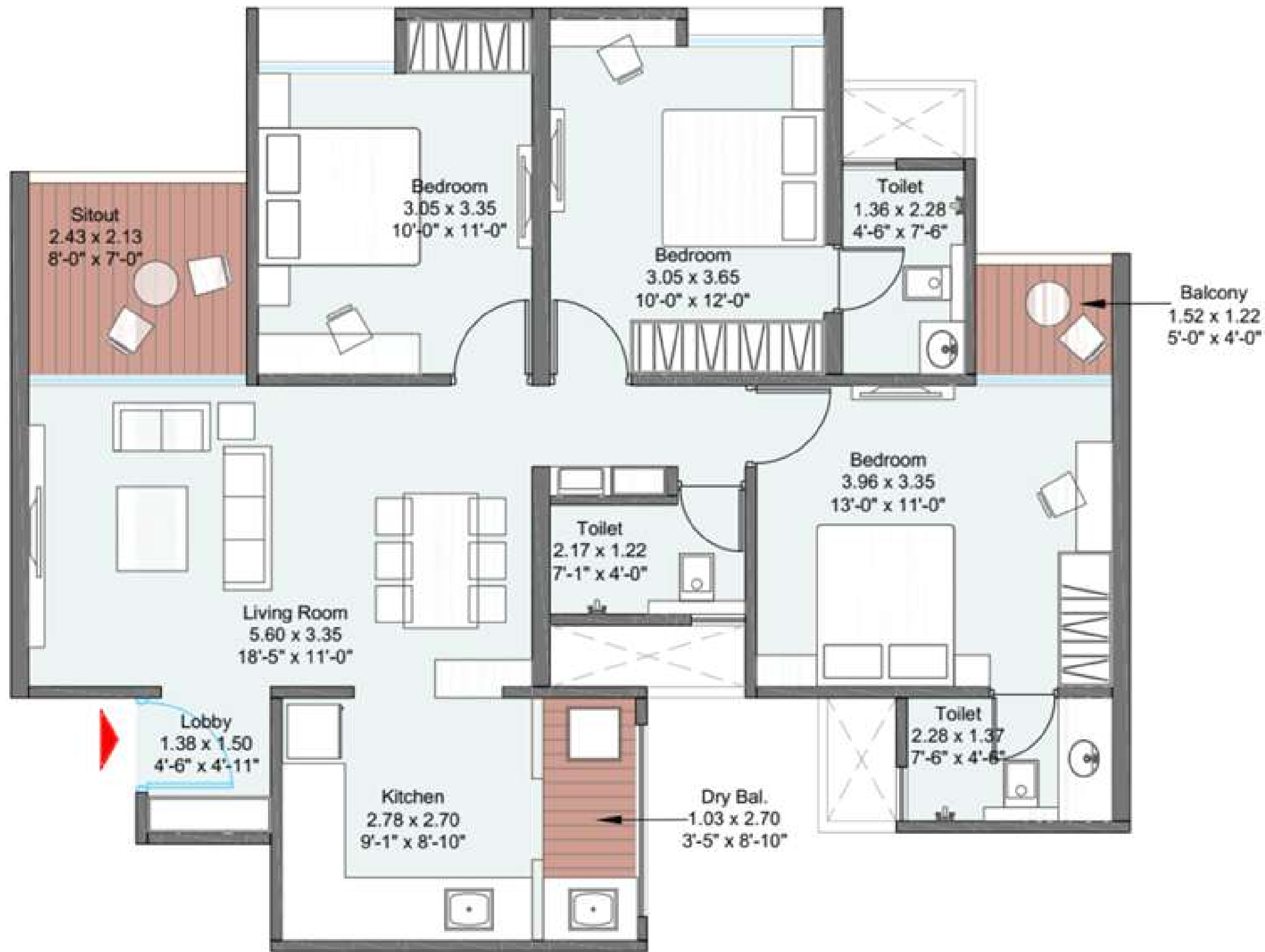
723 SQ.FT.



2BHK - LUXURY

CARPET AREA:

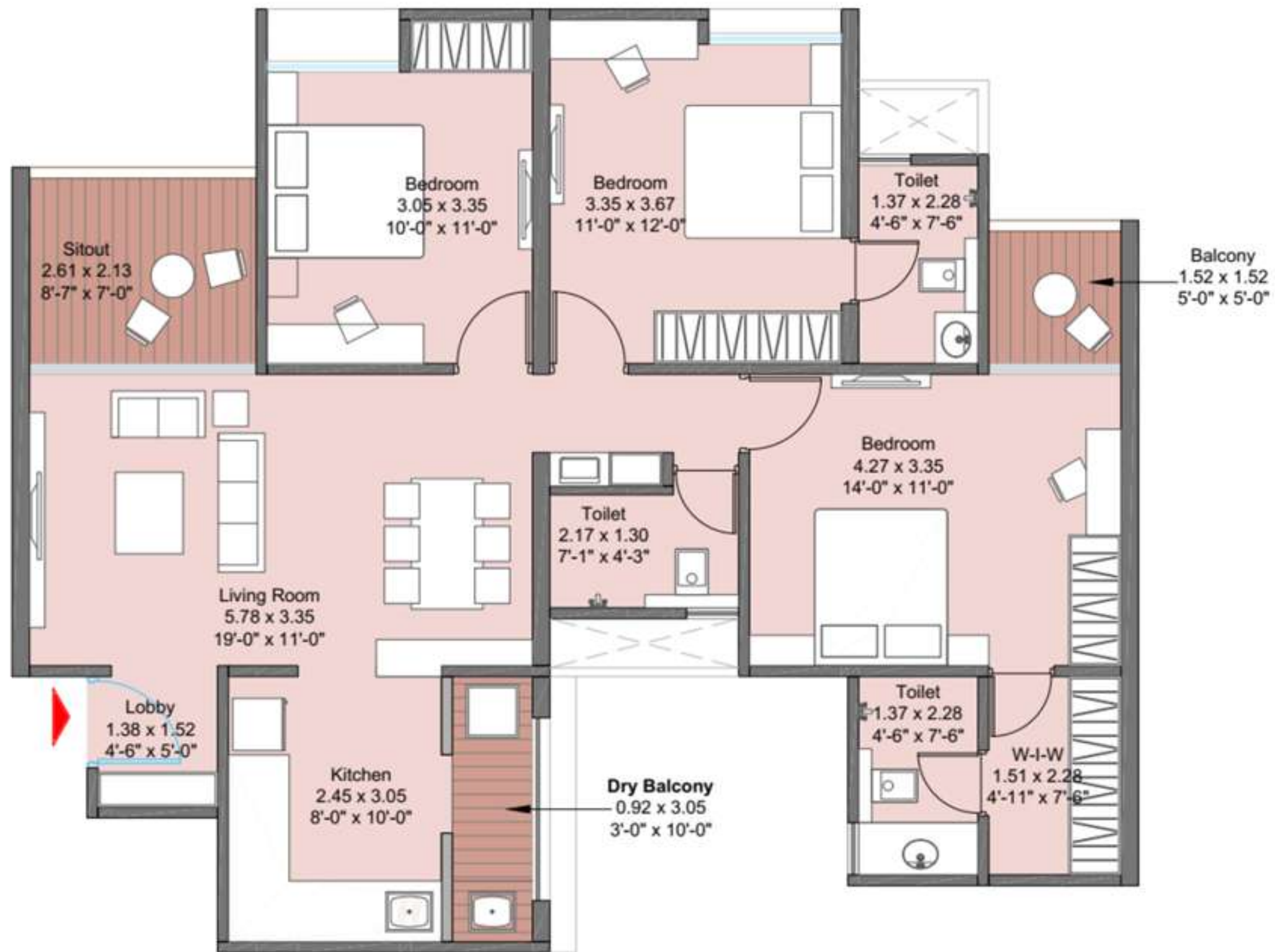
796 SQ.FT.



3BHK - PREMIUM

CARPET AREA:

982 SQ.FT.



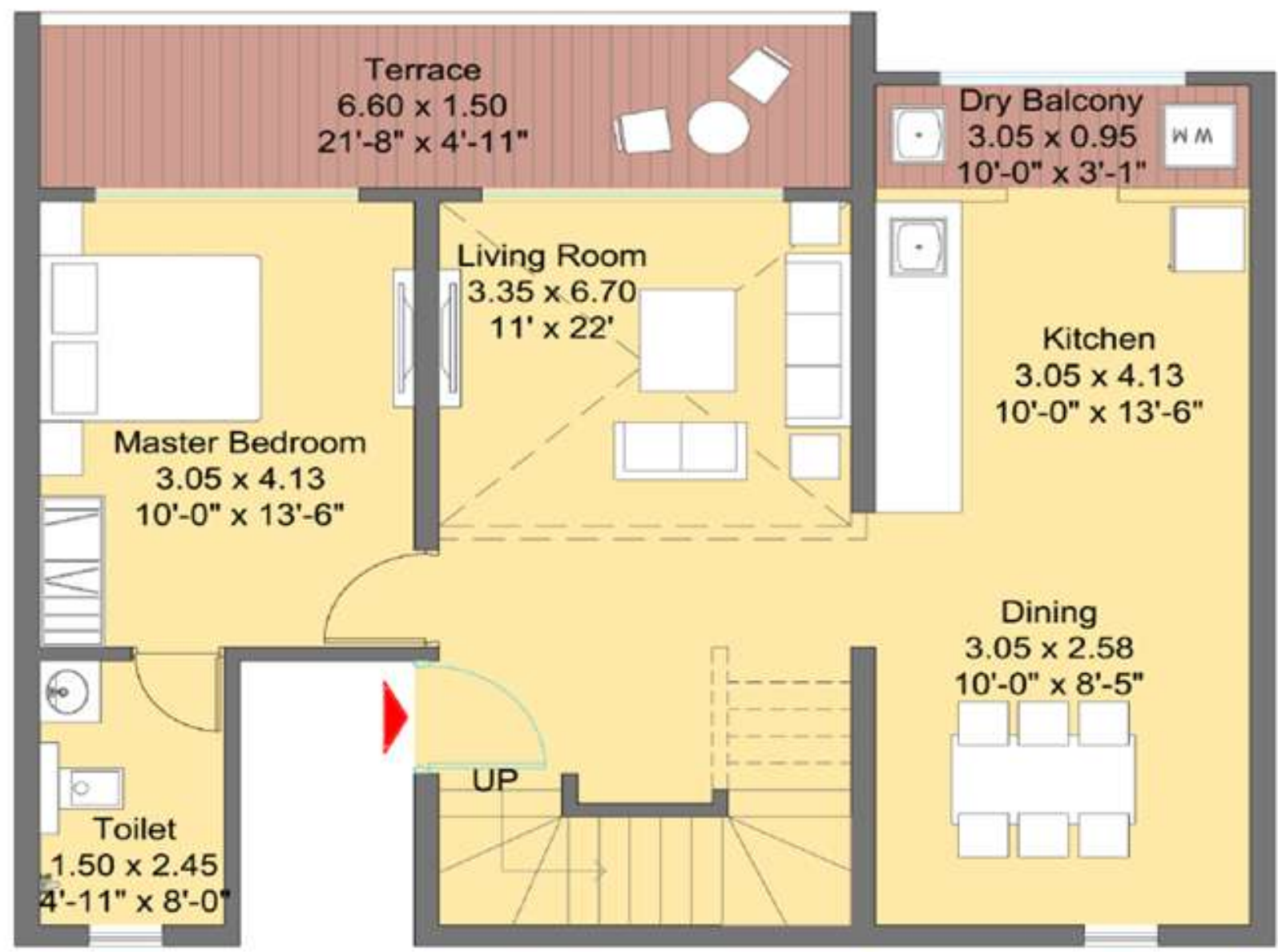
3BHK - LUXURY

CARPET AREA:
1070 SQ.FT.

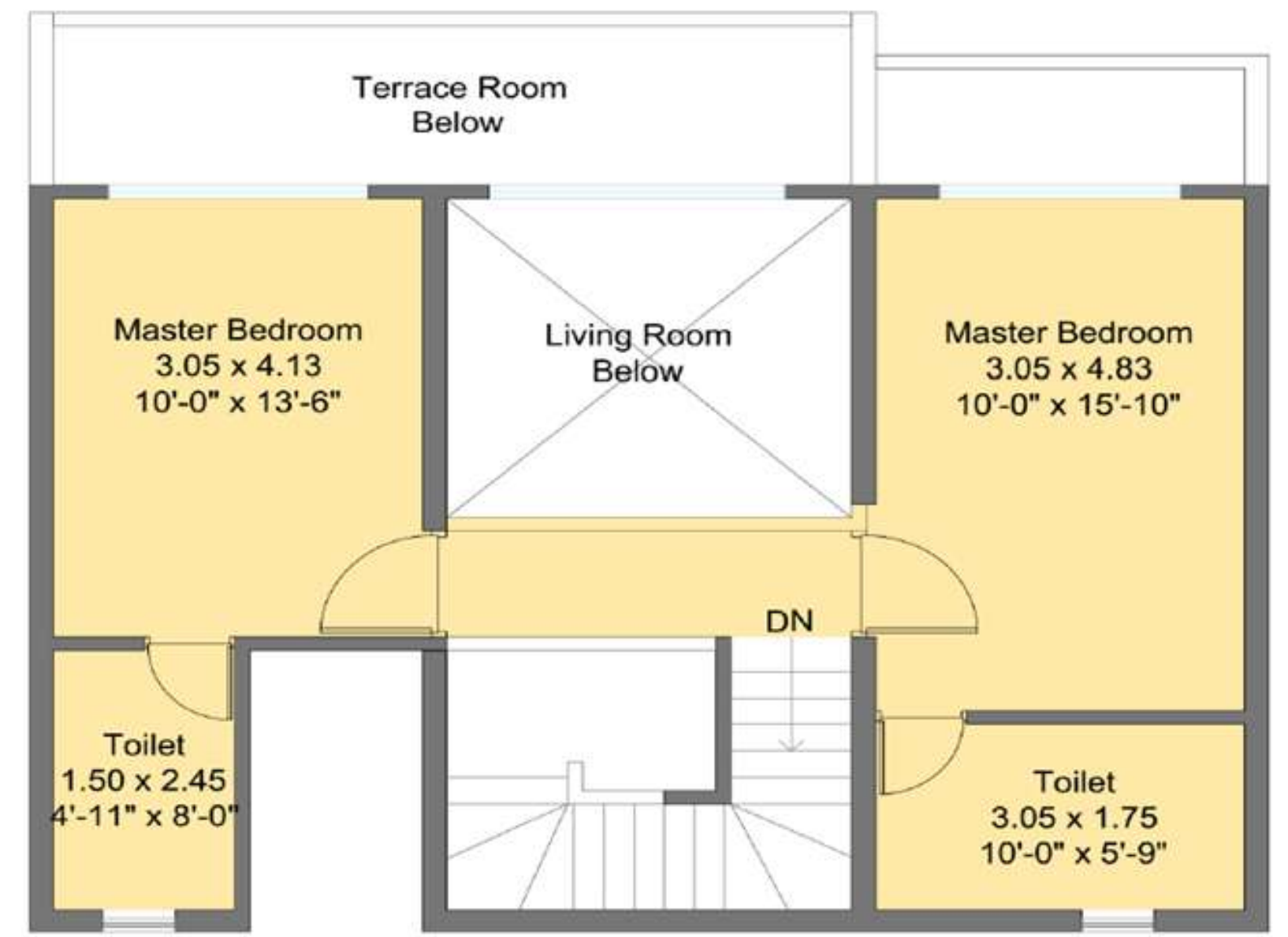
3BHK - DUPLEX

CARPET AREA:

1276 SQ.FT.



Lower Level Duplex



Upper Level Duplex



PRICE
&
BENEFITS

TOKEN TYPES:

GOLD

51,000/-

(Refundable)

PLATINUM

1,50,000/-

(Non- Refundable)



PRICE DETAILS:

Type	Carpet (sq.ft)	Max Sourcing Price
2BHK - P	723	70.9L
2BHK - L	796	77.9L
3BHK - P	982	94.9L
3BHK - L	1070	1.06Cr
3BHK - Duplex	1276	1.39Cr

*T&C APPLY

PLATINUM PLUS SUBSCRIPTION:

Benefits

Platinum Plus

Platinum

Spot Benefit

Confirmed Covered Car Park

Priority Inventory Access

Documentation Benefit

*T&C APPLY

A photograph of a paved road curving into the distance, lined with tall, leafy trees. The scene is shrouded in a light mist or fog, creating a soft, atmospheric effect. The road has white lines on either side. In the background, a small white building and a road sign are visible through the haze. The overall mood is serene and contemplative.

THANK YOU