



VEER VISHWA

The landmark of adorn life



A PROJECT BY



V B GROUP

WE CREATE MEMORIES

NIGHT VIEW



A place where you can
Embrace lifestyle

Rise every morning with the high-spirit of freshness
and indulge in exclusive rooftop amenities.

VEER VISHWA offers you a
unique lifestyle upgrade with its
comfortable homes. Elevating your happiness to
the next level.





Private Residences For

Elite People

A **VEER VISHWA** that gives opportunity to people to build meaningful connections. A neighbourhood where people feel safe, secure and grow together. Where every member is valued, the young and the forever young.



DAY VIEW



MASTER LAYOUT



UPPER STILT FLOOR



ENTRANCE LOBBY



GYMNASIUM

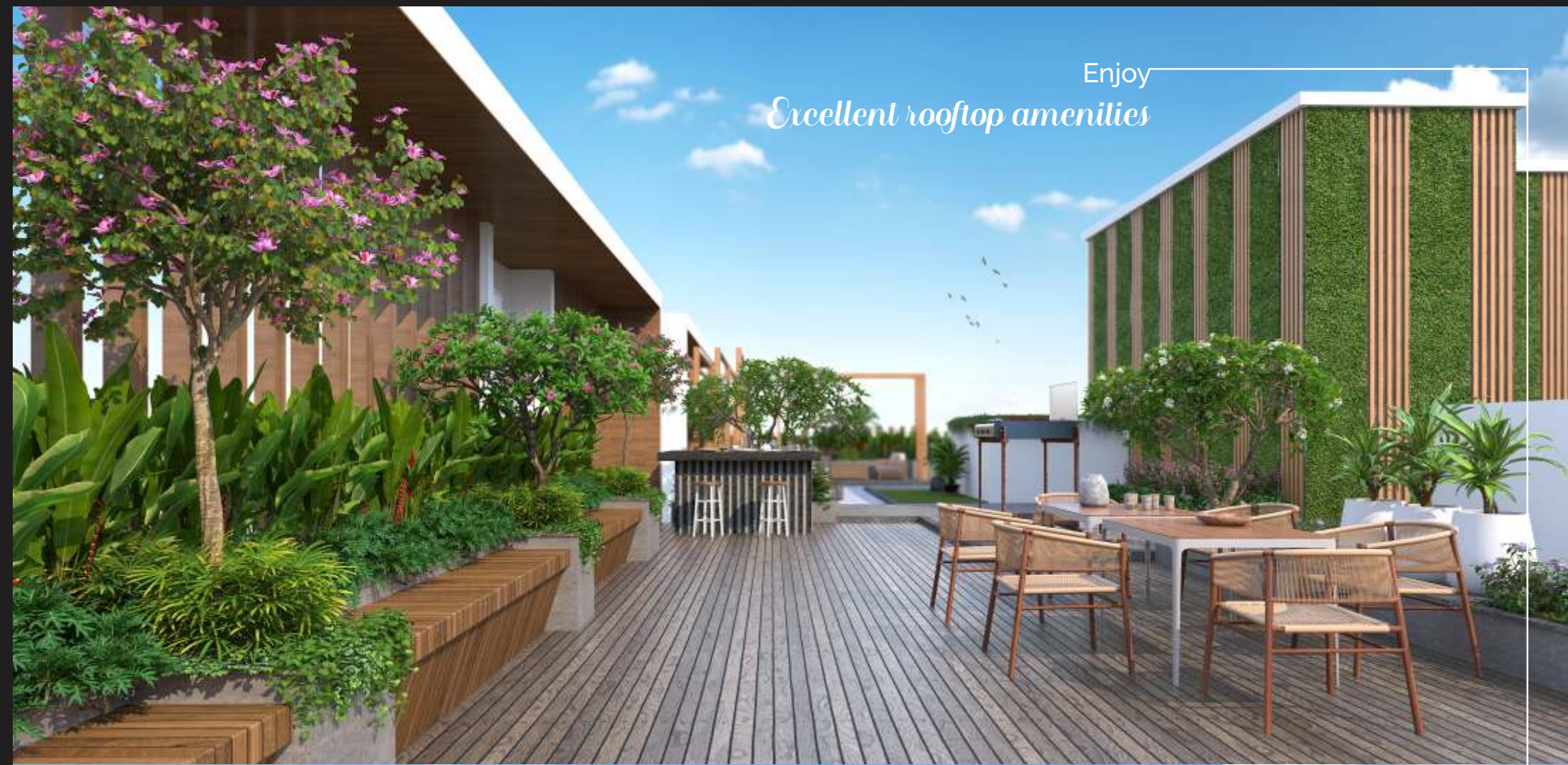
Enter into *Mindfully designed amenities*



CRECH ROOM



Spend a
Quality time on Rooftop



Enjoy
Excellent rooftop amenities



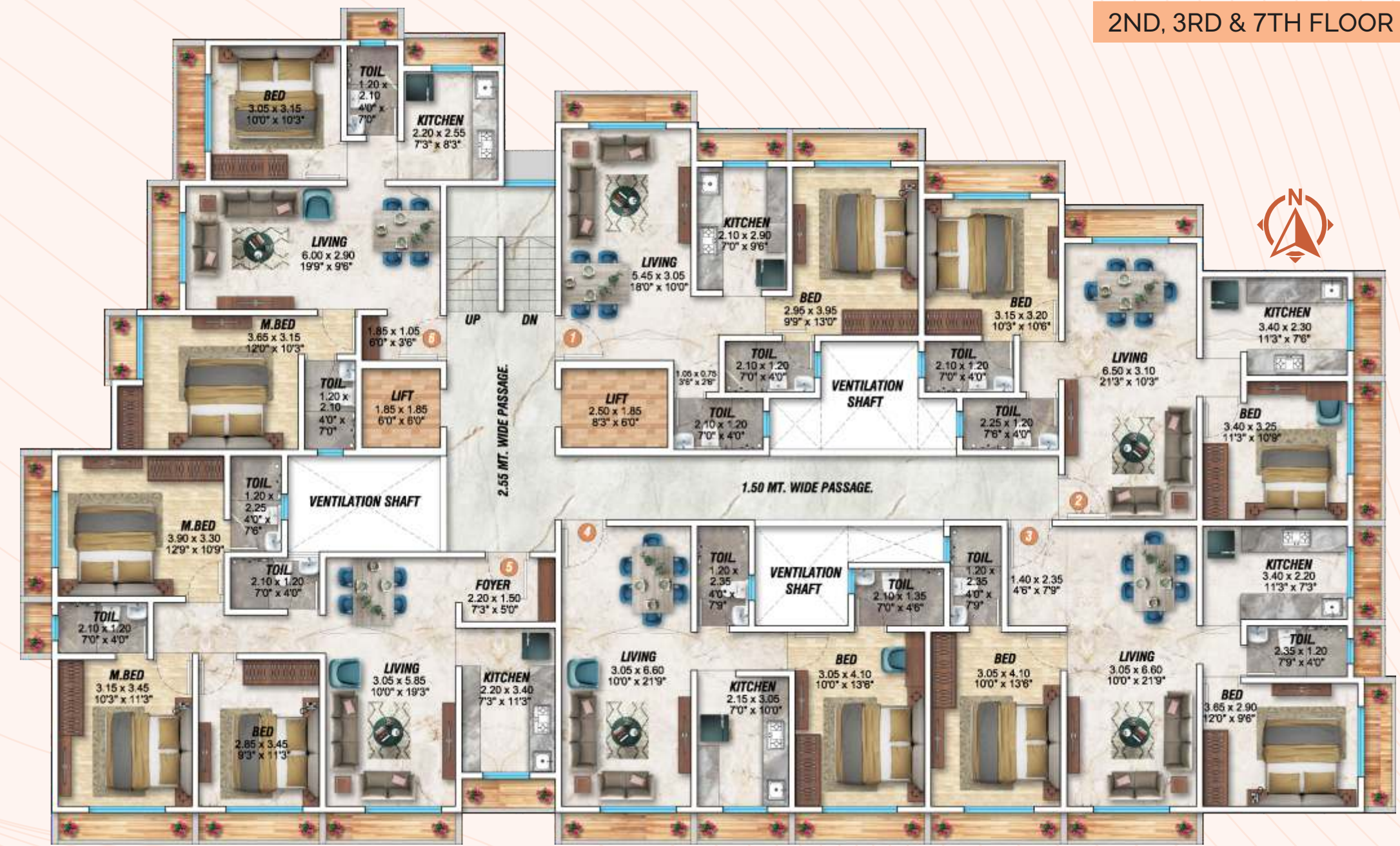
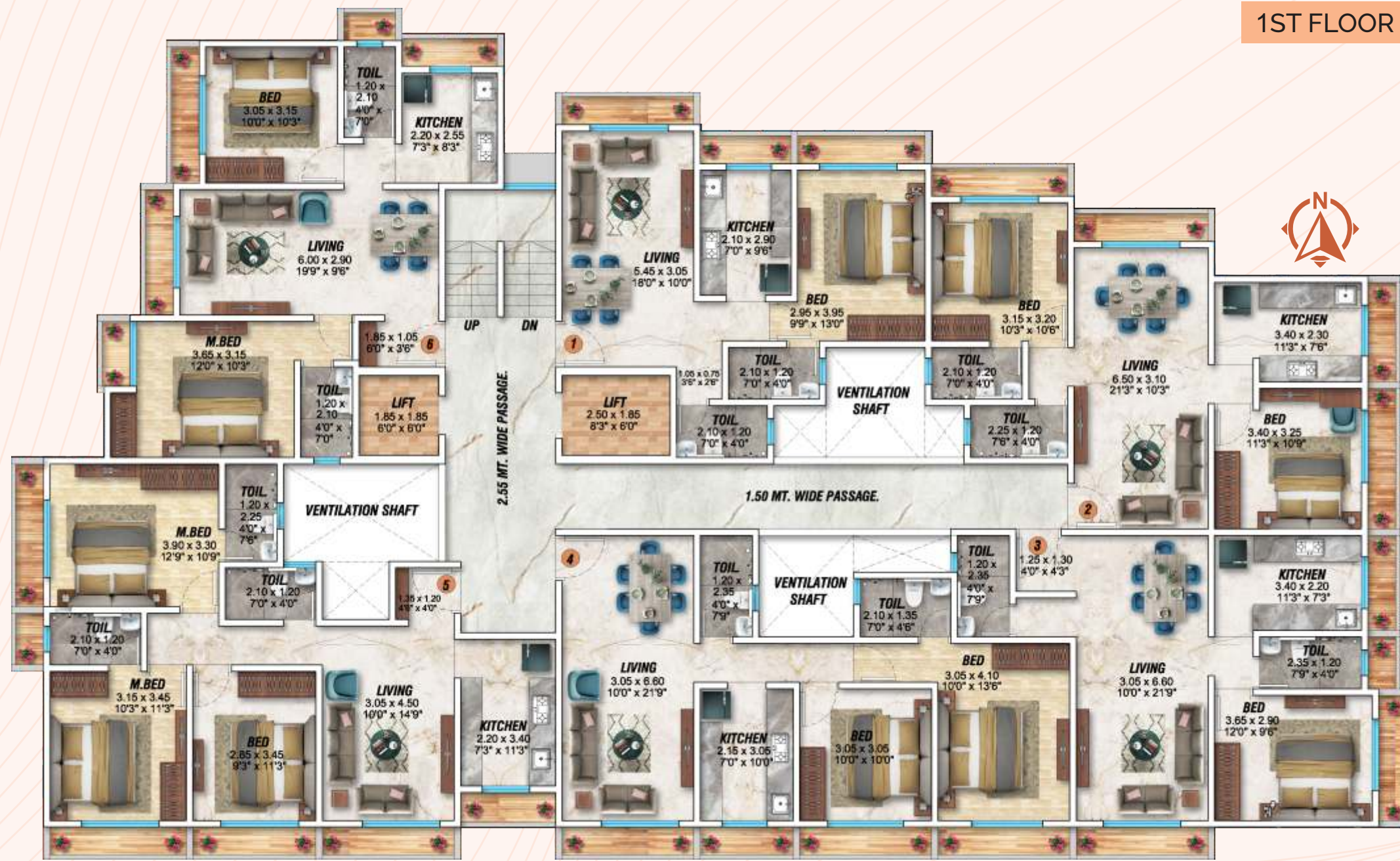
YOGA & MEDITATION



KIDS PLAY AREA

1ST FLOOR

2ND, 3RD & 7TH FLOOR



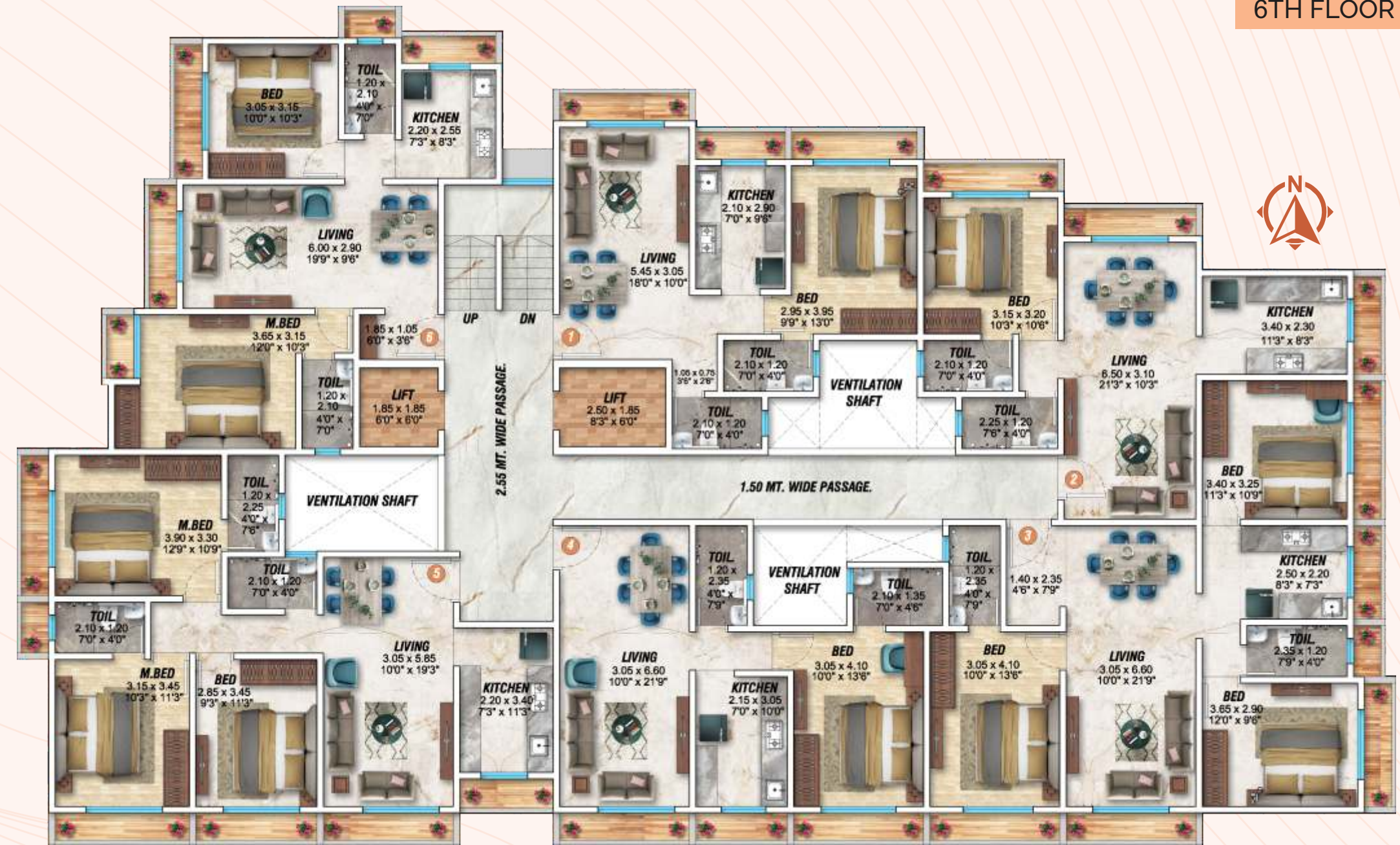
WING	FLAT NO.	RERA CARPET AREA	CONFIGURATION
A	103	548 SQ.FT.	1 BHK
A	102	631 SQ.FT.	2 BHK

WING	FLAT NO.	RERA CARPET AREA	CONFIGURATION
A	204/304/704	531 SQ.FT.	1 BHK
A	206/306/706	623 SQ.FT.	2 BHK



4TH & 5TH FLOOR

6TH FLOOR



WING	FLAT NO.	RERA CARPET AREA	CONFIGURATION
A	406 / 506	623 SQ.FT.	2 BHK

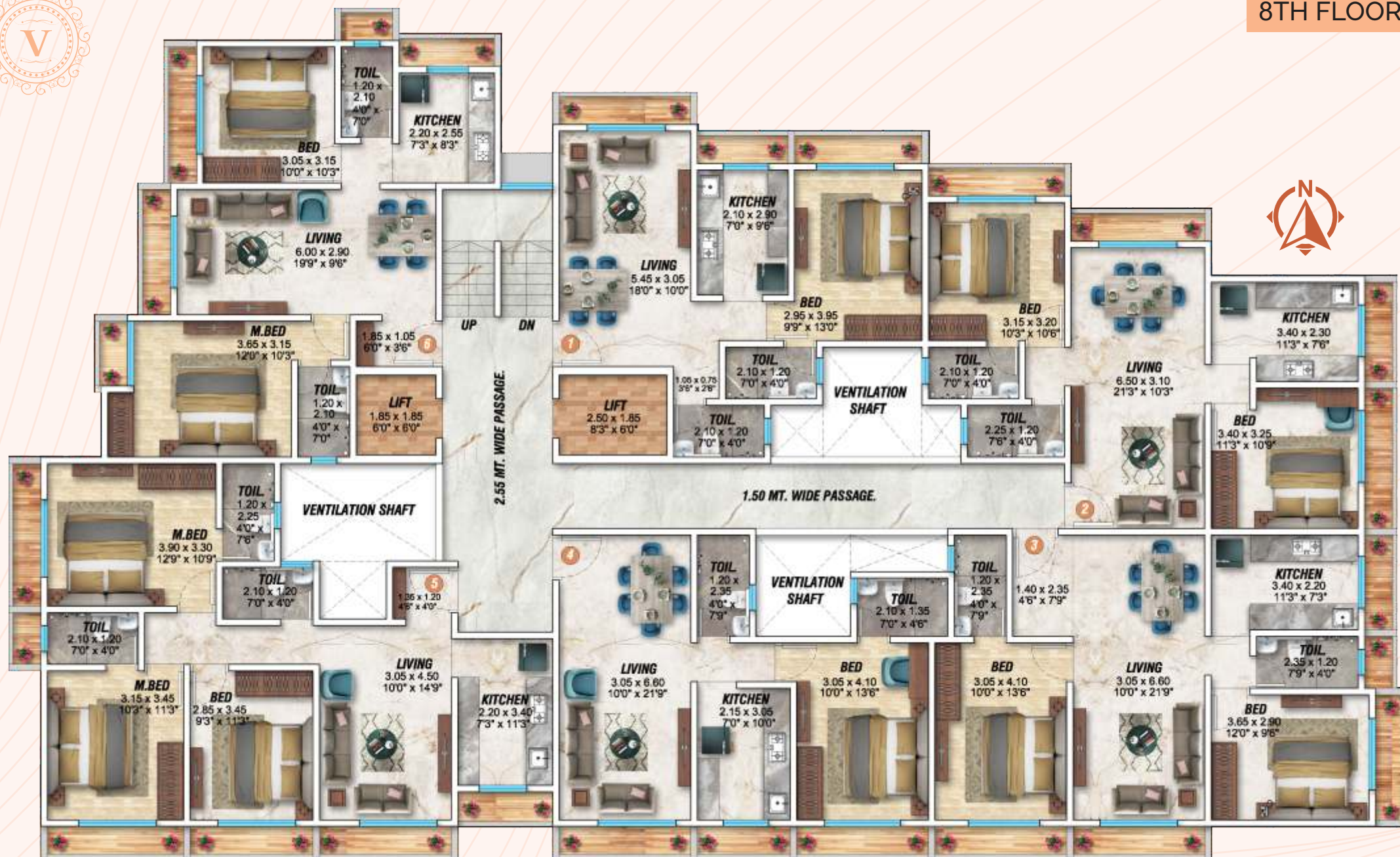


WING	FLAT NO.	RERA CARPET AREA	CONFIGURATION
A	601	484 SQ.FT.	1 BHK





8TH FLOOR



GENERAL FEATURES :

- Designer lobby with notice board, name plate, seating chair.
- 24 hours CCTV surveillance (lobby, lift, all open area, society office)
- Branded lifts [Schindler, Johnson, Kone, and ThyssenKrupp]
- Society office.
- Designer entrance on gate.
- Underground tank with 2 high speed pump as per TMC.
- Fire-fighting system as per TMC norms with generator backup.
- Generator back up for lift, common area of premises. (staircase, compound, lobby, terrace, mechanism parking & water pump)
- Separate Duct for electric & fire-fighting system.
- Light point on each decks for living room window.
- Electric meter charges, maintenance, assessment to be paid by the developer till OC.
- 2 coat plaster for external walls.
- Damp proof coat for external walls.
- Asian paint external walls.

INTERNAL SPECIFICATIONS



FLOORING



48" x 48" vitrified tiles with 4" skirting of same tile (Johnson, Kajaria, Nitco, Marbonite, Euro, Exxaro, equivalent)

WINDOWS



- Anodized French window in all rooms with glass frame
- Granite sill on all windows

KITCHEN



- Granite kitchen platform with front patti and back patti with moulding
- Nirali SS sink (size to be confirmed)
- Designer glazed tiles up to beam height above platform.

BATH & WC



- Designer glazed tiles up to beam level.
- Anti-Skid flooring.
- Plumber, Jaguar, Parry ware, Hind ware fittings equivalent.
- European style wall mounted WC of ceramic in master bedroom.
- Concealed plumbing work with Prince Make.
- Solar panel installation for solar water heater

WALL & PAINT



- Internal walls finished with POP
- High quality paint for interior & texture for exterior

ELECTRIFICATION



- Polycab frd wire. [No joint, single wire from meter room to flat]
- MCB, ELCB (Indo Asian, Legrand, Siemens, Anchor Roma)
- Internet cable & Wi-Fi point
- 2 light point, 2 fan point, 1 wall hanging point living room
- AC point in all rooms [15 amp]
- TV cable point in all room
- ISI modular switches [Legrand / Crabtree / GM / Anchor / Romal]
- Microwave & Fridge point in kitchen [15 amp]
- Exhaust fan and geyser point in bathroom [15 amp]

DOORS



- Teakwood Wooden frames for main door & bedroom doors.
- Granite frame for bathroom doors.
- Teak wood finish main door and bedroom doors with decorative laminated.
- Godrej lock for main door, eye hole, and night latch.
- Knob lock for bedroom doors.
- FRP door for Bath



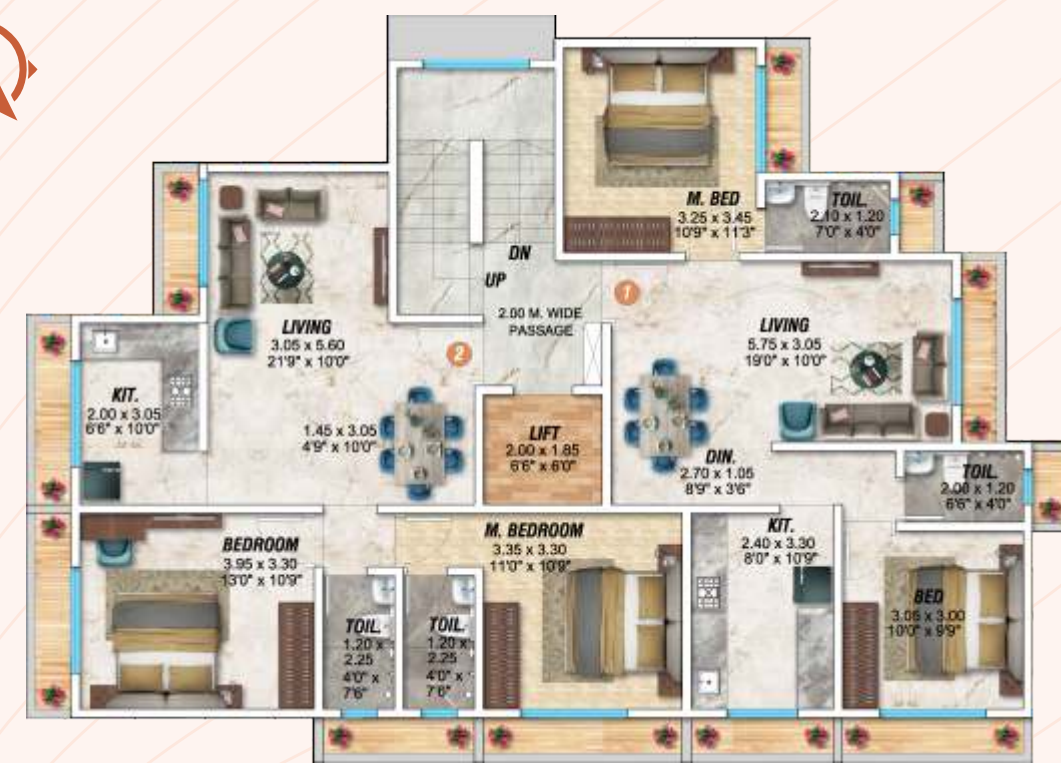
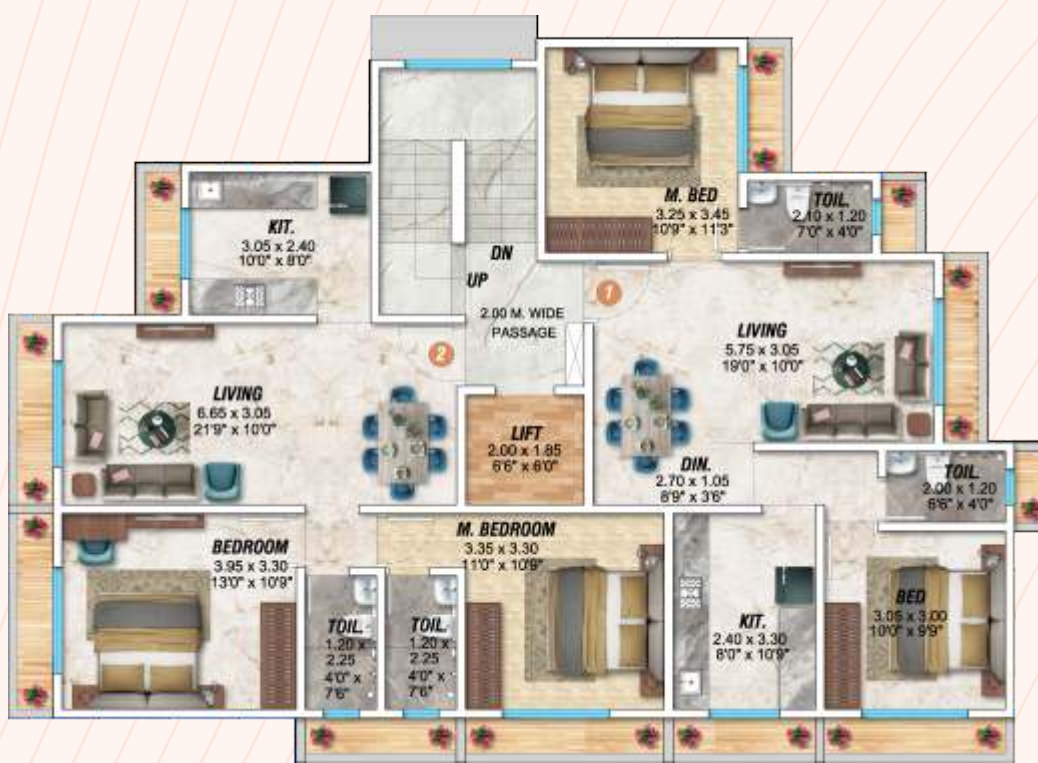


1ST TO 3RD & 8TH FLOOR

WING - B

4TH TO 7TH FLOOR

WING - B



Comforts that bring joy
To Your family



WING	FLAT NO.	RERA CARPET AREA	CONFIGURATION
B	101 TO 801	632 SQ.FT.	2 BHK



Happiness is enjoying the
Little things in life



LOCATION MAP



- THANE STATION - 2 MIN.
- EASTERN EXPRESS HWY. - 2 MIN.
- UPCOMING METRO STATION - 5 MIN.
- ST BUS DEPOT - 3 MIN.
- SCHOOL, MARKET & HOSPITAL- 2 MIN.
- SHOPPING CENTER - 2MIN.





VEER VISHWA

The landmark of adorn life

A PROJECT BY



VB GROUP

WE CREATE MEMORIES

CORPORATE OFFICE

VB GROUP OF COMPANIES, Unit No. 305, 3rd Floor, Centrum IT Park, Wagle Estate, Thane (W) 400 604.
• Email: vblifespaces16@gmail.com

SITE ADDRESS

Plot Bearing C.T.S. No. 10, Tika No.21, Sector No.2, Naupada, Thane (w).

PROJECT FUNDING FOR VB GROUP



MahaRERA No. P51700054017



DISCLAIMER

The plans, specifications, images & the other details herein are only indicative & the developer reserve the right to change any or all these in the interest of the development. It is not a legal document & does not constitute a part of an offer or contract.