

A PROJECT BY



www.platinumgroup.co

SITE ADDRESS

Platinum Citylights, Sr. No. 361, Near Swami Samarth Math, Kudlewasti, Moshi, Pune 411039

OFFICE ADDRESS

Office No. 304, MSR Capital, Morewadi, Pimpri Colony, Pune, Maharashtra 411018

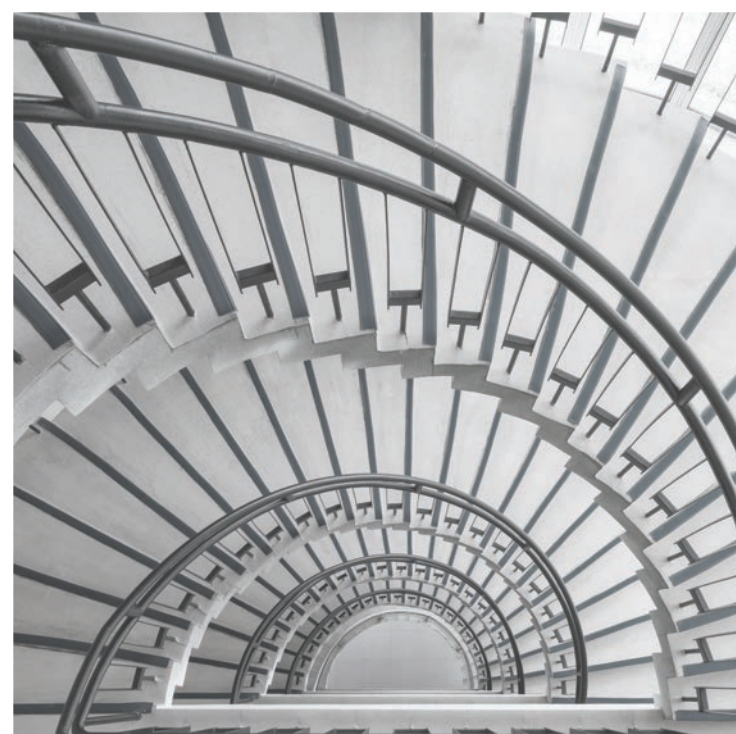
Disclaimer: All the designs, images, specifications, facilities and other details herein are purely indicative in nature and the intended recipient should note that these are to be treated as purely provisional and informative and as such only. We reserve the right to modify / change / amend / alter any of the aforesaid in the best interest of the development and as per RERA regulations. The contents herein should not be construed as an offer / invitation to offer / contract. This printed material inter alia images, contents therein are for representative purpose only. Any party desirous / interested in the project needs to enter in to agreement for sale.

www.thetribe.solutions



Yeh ghar hai khaas





PLATINUM GROUP

With over two decades of experience, Platinum Group has established itself as one of the leading real estate developers in Pune. Our experts go above and beyond perceived limitations to create projects that stand the test of time. The customer-centric approach is a cornerstone of our business, ensuring every client receives personalised attention and exceptional service.

Platinum Group pays careful attention to all factors, including modern-day necessities. Our team of professionals ensures that every project we undertake is a perfect combination of style, functionality and sustainability. Our commitment to top-notch amenities and specifications ensures that every space we create is highly efficient and effective, enhancing the quality of life.

Our unwavering commitment to excellence and attention to detail set us apart from other real estate builders in Pune. We are devoted to creating superior-quality landmarks that make a lasting impression. From the construction materials to the final finishing touches, we leave no stone unturned in building properties that exceed your expectations.



Your neighbourhood



Experience A Different Setting In the Heart of MOSHI

In this fast-paced world, an ideal location includes schools, colleges, hospitals, IT parks, and shopping malls nearby. Located strategically in Moshi, Citylights offers easy access to your everyday necessities. Moreover, it has the upcoming project, PIECC (Pune International Exhibition & Convention Center) in close proximity.

International Schools



Super Markets



Multispeciality Hospitals



Shopping Malls



PLATINUM
CITYLIGHTS
2 and 3 BHK UrbaNature Homes

Experience a paradise on earth with Citylights, the ultimate destination for luxurious urban living. Our 2 and 3 BHK UrbaNature Homes in Moshi redefine opulence and bring a touch of sophistication to your lifestyle. Indulge in the perfect blend of convenience and luxury with top-notch amenities and easy access to necessities.

Every detail of Citylights has been designed to offer the best modern living experience. Whether it's the breathtaking views, luxurious interiors, or lush greenery, we have something special here for you.



Yeh ghar hai khaas

Khushiyon ka hai ehsaas

Indulge in ultimate joy, comfort and happiness. At Citylights, we understand the value of a peaceful and fulfilling lifestyle. Our luxurious urban living experience offers the perfect sanctuary to unwind after a hectic day. From the moment you step into your home, you'll be enveloped in an atmosphere of warmth and comfort that's hard to find elsewhere. Our good neighbourhood and tranquil surroundings provide a peaceful escape from the hustle and bustle of the city. We strive to provide the perfect environment to make lasting memories with your loved ones.



Artistic impression

Yeh ghar hai khaas

Har pal mein hai mithaas

Experience the magic of our homes, where every moment is special and every day is filled with sweetness. Our commitment to top-class amenities ensures that every moment spent here is a special one. Whether you're in the mood for some invigorating exercise, a relaxing swim or just want to spend quality time with your family, we have everything you need to make it happen.





ENTRY GATE





CLUB HOUSE



CLUB HOUSE & WATER BODY ENTRY





SWIMMING POOL WITH DECK





OPEN SPACE



GARDEN



WORK PODS



CAFE / WORK SPACE





KIDS PLAY AREA



SEATING ALONG WALKWAY



OPEN GYM



TENNIS COURT



2 BHK
(CUT SECTION)



Please provide the isometric view for 2 BHK

3 BHK
(CUT SECTION)



A WING

7TH & 12TH REFUGE
FLOOR PLAN



Flat No.	Flat Type	RERA Carpet Area	Total Area in Sq.Ft. Per Floor	Tenaments	Total Area in Sq.Ft.
701, 1201	3 BHK	90.98	1322.07	2	2644.13
702, 1202	1 BHK	51.41	747.06	2	1494.12
703, 1203	2 BHK	70.60	1025.92	2	2051.83



A WING

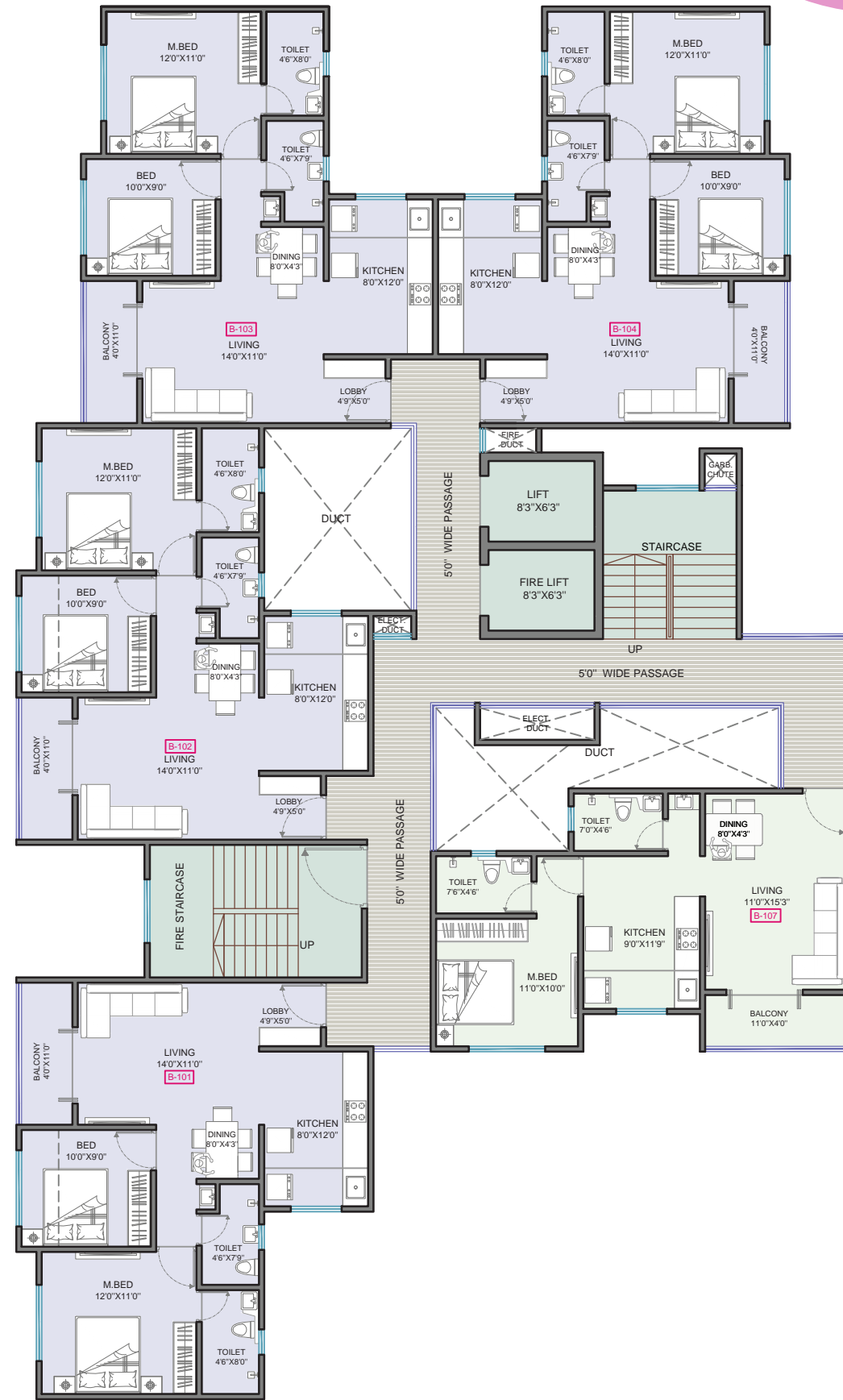
TYPICAL FLOOR PLAN
1ST TO 6TH, 8TH TO 11TH
13TH TO 16TH FLOOR



Flat No.	Flat Type	RERA Carpet Area	Total Area in Sq.Ft. Per Floor	Tenaments	Total Area in Sq.Ft.
101, 201, 301, 401, 501, 601, 801, 901, 1001, 1101, 1301, 1401, 1501, 1601	3 BHK	90.98	1322.07	14	18508.93
102, 202, 302, 402, 502, 602, 802, 902, 1002, 1102, 1302, 1402, 1502, 1602	2 BHK	70.60	1025.92	14	14362.84
103, 203, 303, 403, 503, 603, 803, 903, 1003, 1103, 1303, 1403, 1503, 1603	2 BHK	70.60	1025.92	14	14362.84



B WING 1ST FLOOR PLAN



Flat No.	Flat Type	RERA Carpet Area	Total Area in Sq.Ft. Per Floor	Tenaments	Total Area in Sq.Ft.
101	2 BHK	64.57	938.29	1	938.29
201	2 BHK	64.57	938.29	1	938.29
301	2 BHK	64.57	938.29	1	938.29
401	2 BHK	64.57	938.29	1	938.29
501	1 BHK	0.00	0.00	0	0.00
601	1 BHK	0.00	0.00	0	0.00
701	1 BHK	50.49	733.69	1	733.69



B WING 2ND TO 5TH FLOOR PLAN



Flat No.	Flat Type	RERA Carpet Area	Total Area in Sq.Ft. Per Floor	Tenaments	Total Area in Sq.Ft.
201, 301, 401, 501	2 BHK	64.57	938.29	4	3753.17
202, 302, 402, 502	2 BHK	64.57	938.29	4	3753.17
203, 303, 403, 503	2 BHK	64.57	938.29	4	3753.17
204, 304, 404, 504	2 BHK	64.57	938.29	4	3753.17
205, 305, 405, 505	1 BHK	44.53	647.08	4	2588.33
206, 306, 406, 506	1 BHK	50.49	733.69	4	2934.76
207, 307, 407, 507	1 BHK	50.49	733.69	4	2934.76



B WING 7TH & 12TH REFUGE FLOOR PLAN



	Flat No.	Flat Type	RERA Carpet Area	Total Area in Sq.Ft. Per Floor	Tenaments	Total Area in Sq.Ft.
WING B (MHADA)	701, 1201	2 BHK	0.00	0.00	0	0.00
	702, 1202	2 BHK	0.00	0.00	0	0.00
	703, 1203	2 BHK	0.00	0.00	0	0.00
	704, 1204	2 BHK	0.00	0.00	0	0.00
	705, 1205	1 BHK	44.53	647.08	2	1294.17
	706, 1206	1 BHK	50.49	733.69	2	1467.38
	707, 1207	1 BHK	50.49	733.69	2	1467.38
WING B	701, 1201	2 BHK	64.57	938.29	2	1876.58
	702, 1202	1 BHK	47.97	697.07	2	1394.14
	703, 1203	1 BHK	45.32	658.56	2	1317.13
	704, 1204	2 BHK	64.57	938.29	2	1876.58
	705, 1205	1 BHK	0.00	0.00	0	0.00
	706, 1206	1 BHK	0.00	0.00	0	0.00
	707, 1207	1 BHK	0.00	0.00	0	0.00



B WING 16TH FLOOR PLAN



	Flat No.	Flat Type	RERA Carpet Area	Total Area in Sq.Ft. Per Floor	Tenaments	Total Area in Sq.Ft.
WING B (MHADA)	1601	2 BHK	0.00	0.00	0	0.00
	1602	2 BHK	0.00	0.00	0	0.00
	1603	2 BHK	0.00	0.00	0	0.00
	1604	2 BHK	0.00	0.00	0	0.00
	1605	1 BHK	0.00	0.00	0	0.00
	1606	1 BHK	50.49	733.69	1	733.69
	1607	1 BHK	50.49	733.69	1	733.69
WING B	1601	2 BHK	64.57	938.29	1	938.29
	1602	2 BHK	64.57	938.29	1	938.29
	1603	2 BHK	64.57	938.29	1	938.29
	1604	2 BHK	64.57	938.29	1	938.29
	1605	1 BHK	0.00	0.00	0	0.00
	1606	1 BHK	0.00	0.00	0	0.00
	1607	1 BHK	0.00	0.00	0	0.00



B WING

6TH, 8TH TO 11TH
13TH TO 15TH FLOOR PLAN



MHADA FLATS

	Flat No.	Flat Type	RERA Carpet Area	Total Area in Sq.Ft. Per Floor	Tenaments	Total Area in Sq.Ft.
WING B	601, 801, 901, 1001, 1101, 1301, 1401, 1501	2 BHK	64.57	938.29	8	7506.34
	602, 802, 902, 1002, 1102, 1302, 1402, 1502	2 BHK	64.57	938.29	8	7506.34
	603, 803, 903, 1003, 1103, 1303, 1403, 1503	2 BHK	64.57	938.29	8	7506.34
	604, 804, 904, 1004, 1104, 1304, 1404, 1504	2 BHK	64.57	938.29	8	7506.34
	605, 805, 905, 1005, 1105, 1305, 1405, 1505	1 BHK	0.00	0.00	0	0.00
	606, 806, 906, 1006, 1106, 1306, 1406, 1506	1 BHK	0.00	0.00	0	0.00
	607, 807, 907, 1007, 1107, 1307, 1407, 1507	1 BHK	0.00	0.00	0	0.00
WING B (MHADA)	601, 801, 901, 1001, 1101, 1301, 1401, 1501	2 BHK	0.00	0.00	0	0.00
	602, 802, 902, 1002, 1102, 1302, 1402, 1502	2 BHK	0.00	0.00	0	0.00
	603, 803, 903, 1003, 1103, 1303, 1403, 1503	2 BHK	0.00	0.00	0	0.00
	604, 804, 904, 1004, 1104, 1304, 1404, 1504	2 BHK	0.00	0.00	0	0.00
	605, 805, 905, 1005, 1105, 1305, 1405, 1505	1 BHK	44.53	647.08	8	5176.67
	606, 806, 906, 1006, 1106, 1306, 1406, 1506	1 BHK	50.49	733.69	8	5869.52
	607, 807, 907, 1007, 1107, 1307, 1407, 1507	1 BHK	50.49	733.69	8	5869.52



C WING

17TH FLOOR PLAN

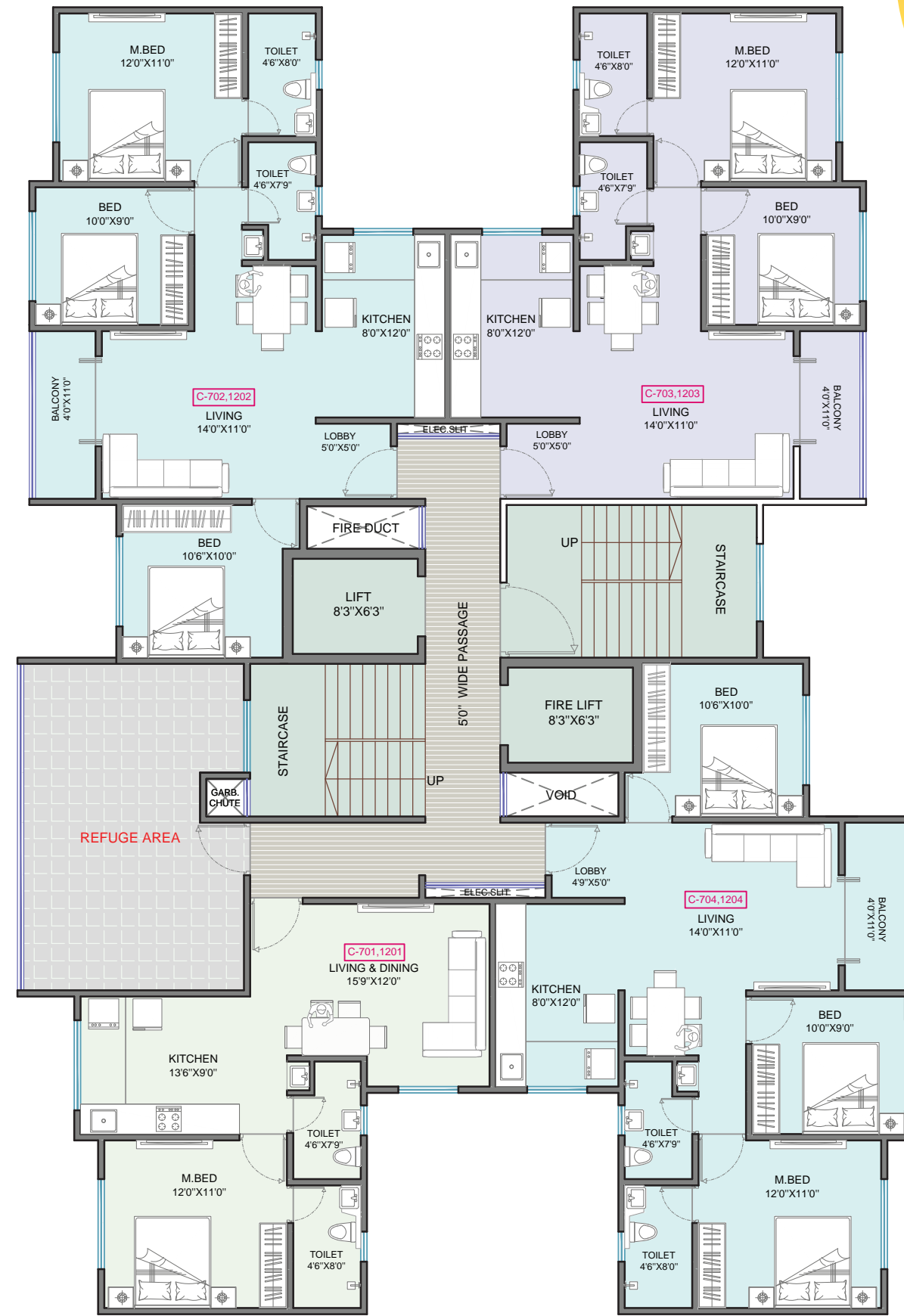


Flat No.	Flat Type	RERA Carpet Area	Total Area in Sq.Ft. Per Floor	Tenaments	Total Area in Sq.Ft.
1701	1 BHK	47.49	690.10	1	690.10
1702	3 BHK	75.13	1091.74	1	1091.74
1703	2 BHK	64.57	938.29	1	938.29
1704	1 BHK	58.50	850.09	1	850.09



C WING

7TH & 12TH REFUGE
FLOOR PLAN

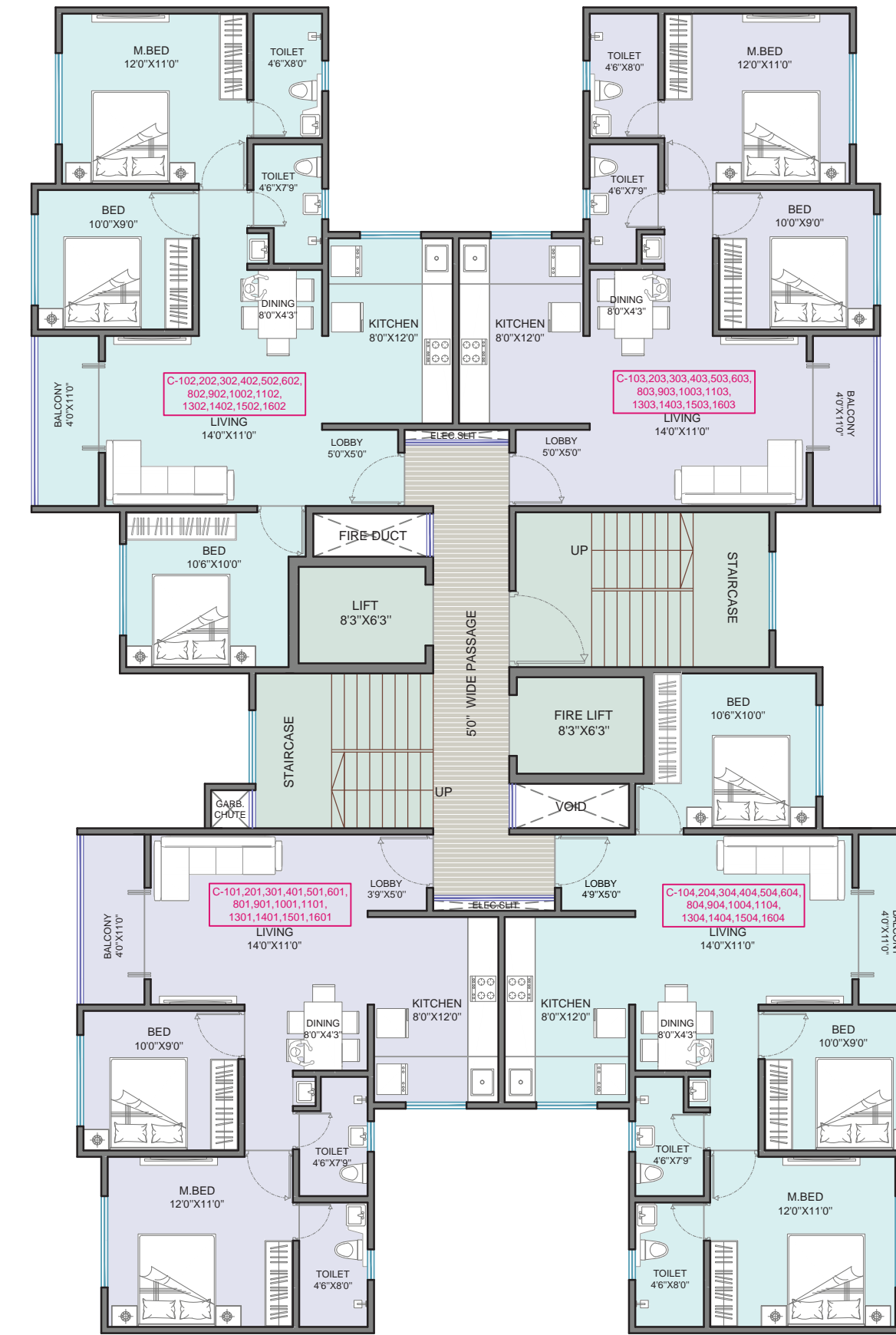


Flat No.	Flat Type	RERA Carpet Area	Total Area in Sq.Ft. Per Floor	Tenaments	Total Area in Sq.Ft.
701, 1201	1 BHK	46.82	680.36	2	1360.72
702, 1202	3 BHK	75.13	1091.74	2	2183.49
703, 1203	2 BHK	64.57	938.29	2	1876.58
704, 1204	3 BHK	75.09	1091.16	2	2182.33



C WING

TYPICAL FLOOR PLAN
1ST TO 6TH, 8TH TO 11TH,
13TH TO 16TH FLOOR



Flat No.	Flat Type	RERA Carpet Area	Total Area in Sq.Ft. Per Floor	Tenaments	Total Area in Sq.Ft.
101, 201, 301, 401, 501, 601, 801, 901, 1001, 1101, 1301, 1401, 1501, 1601	2 BHK	64.09	931.32	14	13038.44
102, 202, 302, 402, 502, 602, 802, 902, 1002, 1102, 1302, 1402, 1502, 1602	3 BHK	75.13	1091.74	14	15284.42
103, 203, 303, 403, 503, 603, 803, 903, 1003, 1103, 1303, 1403, 1503, 1603	2 BHK	64.57	938.29	14	13136.09
104, 204, 304, 404, 504, 604, 804, 904, 1004, 1104, 1304, 1404, 1504, 1604	3 BHK	75.09	1091.16	14	15276.28



D WING

TYPICAL FLOOR PLAN
1ST TO 6TH, 8TH TO 11TH,
13TH TO 17TH FLOOR

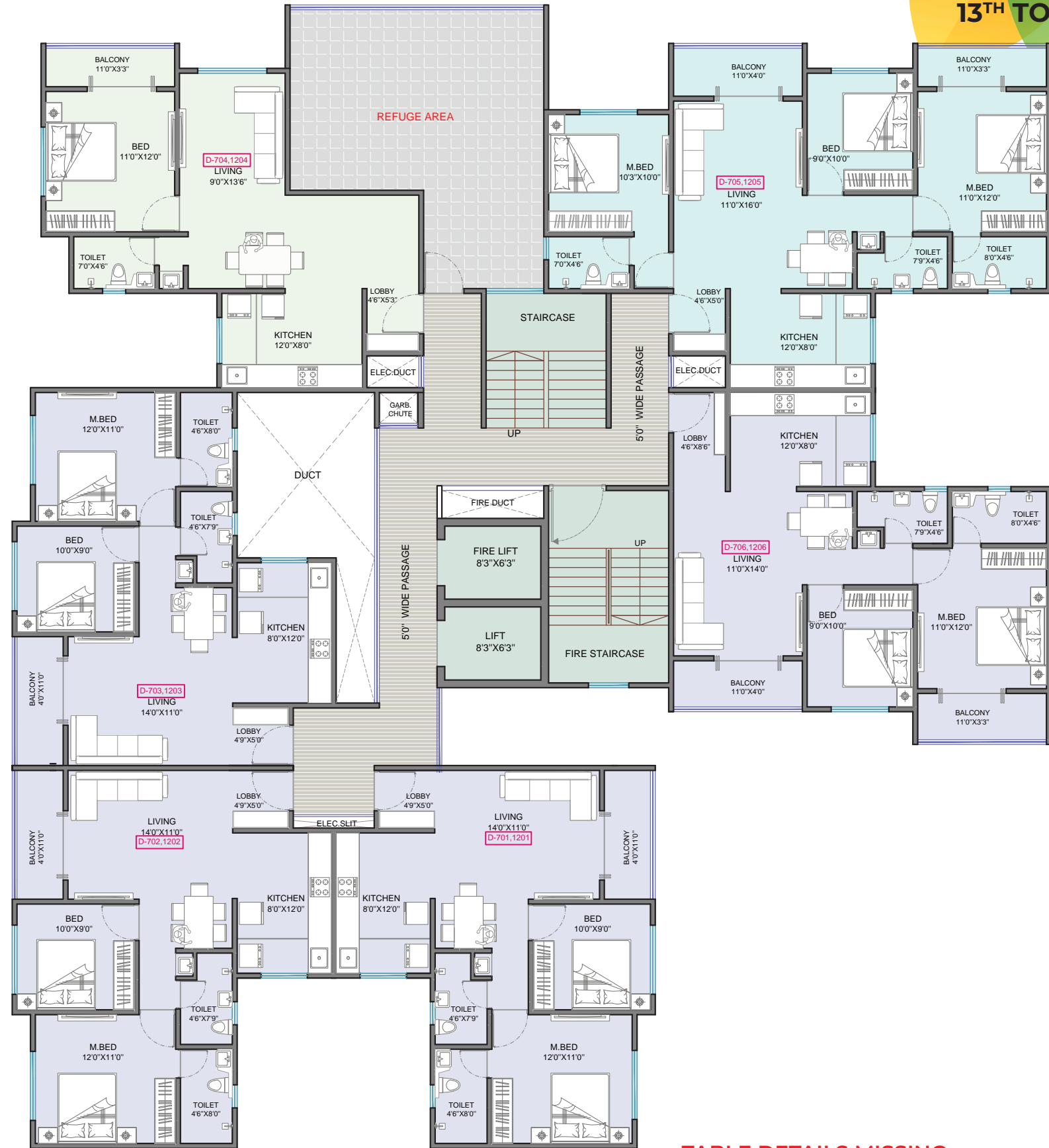


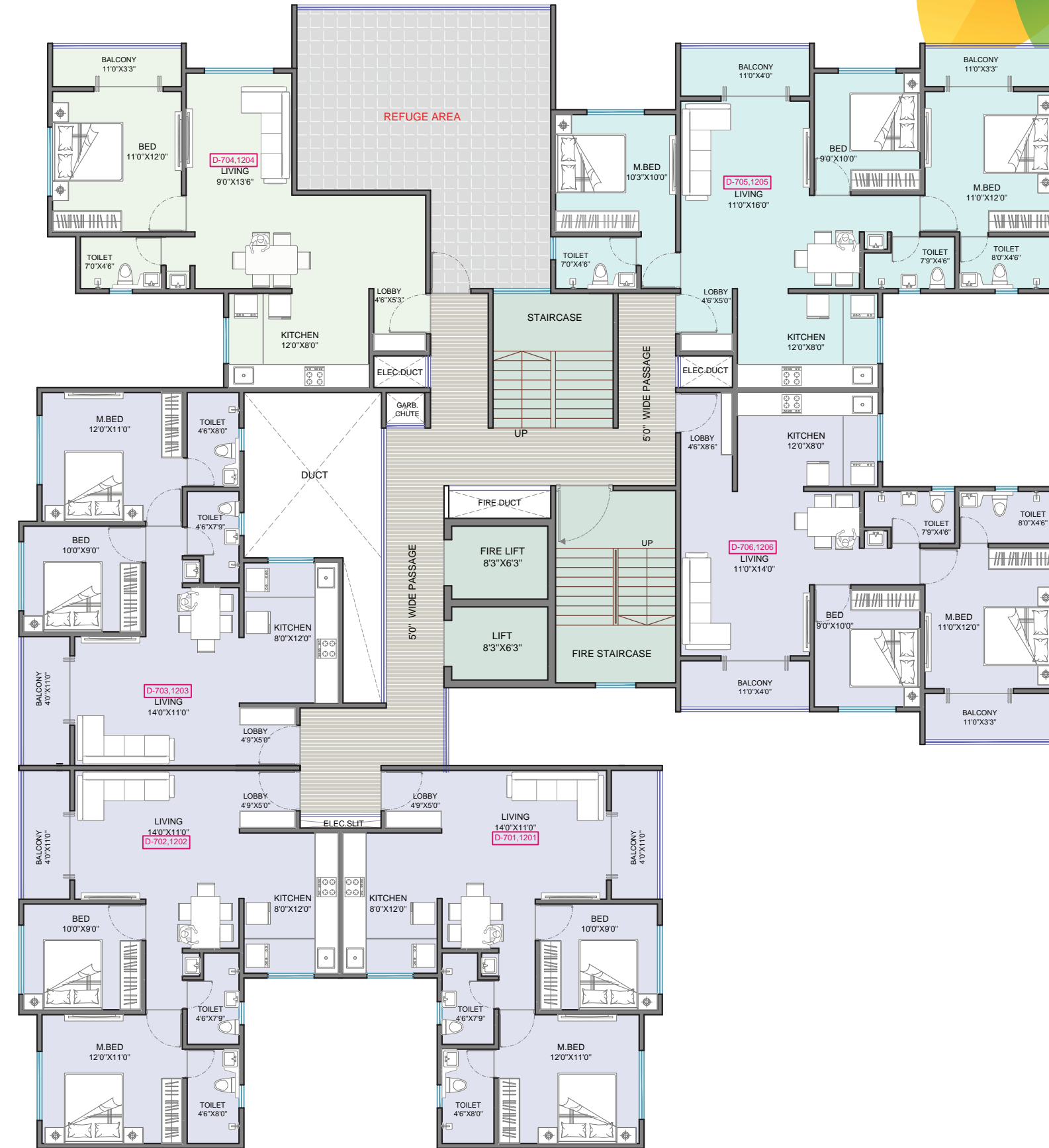
TABLE DETAILS MISSING

Flat No.	Flat Type	RERA Carpet Area	Total Area in Sq.Ft. Per Floor	Tenaments	Total Area in Sq.Ft.
101, 201, 301, 401, 501, 601, 801, 901, 1001, 1101, 1301, 1401, 1501, 1601	2 BHK	64.09	931.32	14	13038.44
102, 202, 302, 402, 502, 602, 802, 902, 1002, 1102, 1302, 1402, 1502, 1602	3 BHK	75.13	1091.74	14	15284.42
103, 203, 303, 403, 503, 603, 803, 903, 1003, 1103, 1303, 1403, 1503, 1603	2 BHK	64.57	938.29	14	13136.09
104, 204, 304, 404, 504, 604, 804, 904, 1004, 1104, 1304, 1404, 1504, 1604	3 BHK	75.09	1091.16	14	15276.28



D WING

7TH & 12TH REFUGE FLOOR PLAN

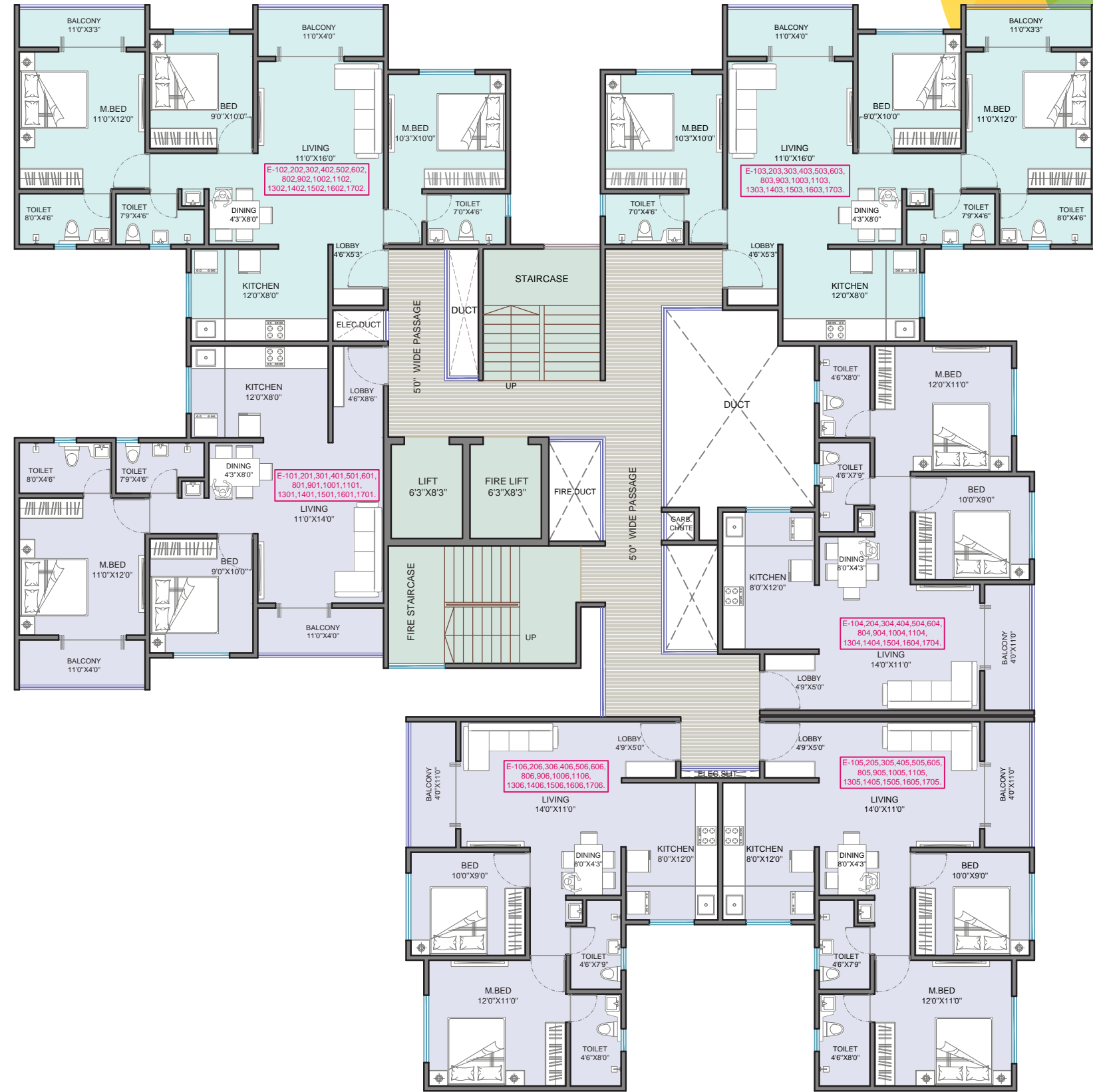


Flat No.	Flat Type	RERA Carpet Area	Total Area in Sq.Ft. Per Floor	Tenaments	Total Area in Sq.Ft.
701, 1201	2 BHK	64.57	938.29	2	1876.58
702, 1202	2 BHK	64.57	938.29	2	1876.58
703, 1203	2 BHK	64.57	938.29	2	1876.58
704, 1204	1 BHK	56.34	818.70	2	1637.40
705, 1205	3 BHK	85.30	1239.53	2	2479.06
706, 1206	2 BHK	70.49	1024.32	2	2048.64



E WING

TYPICAL FLOOR PLAN
1ST TO 6TH, 8TH TO 11TH,
13TH TO 17TH FLOOR



Flat No.	Flat Type	RERA Carpet Area	Total Area in Sq.Ft. Per Floor	Tenaments	Total Area in Sq.Ft.
101, 201, 301, 401, 501, 601, 801, 901, 1001, 1101, 1301, 1401, 1501, 1601, 1701	2 BHK	70.49	1024.32	15	15364.78
102, 202, 302, 402, 502, 602, 802, 902, 1002, 1102, 1302, 1402, 1502, 1602, 1702	3 BHK	85.30	1239.53	15	18592.93
103, 203, 303, 403, 503, 603, 803, 903, 1003, 1103, 1303, 1403, 1503, 1603, 1703	3 BHK	85.30	1239.53	15	18592.93
104, 204, 304, 404, 504, 604, 804, 904, 1004, 1104, 1304, 1404, 1504, 1604, 1704	2 BHK	64.57	938.29	15	14074.39
105, 205, 305, 405, 505, 605, 805, 905, 1005, 1105, 1305, 1405, 1505, 1605, 1705	2 BHK	64.57	938.29	15	14074.39
106, 206, 306, 406, 506, 606, 806, 906, 1006, 1106, 1306, 1406, 1506, 1606, 1706	2 BHK	64.57	938.29	15	14074.39



E WING

7TH & 12TH REFUGE
FLOOR PLAN

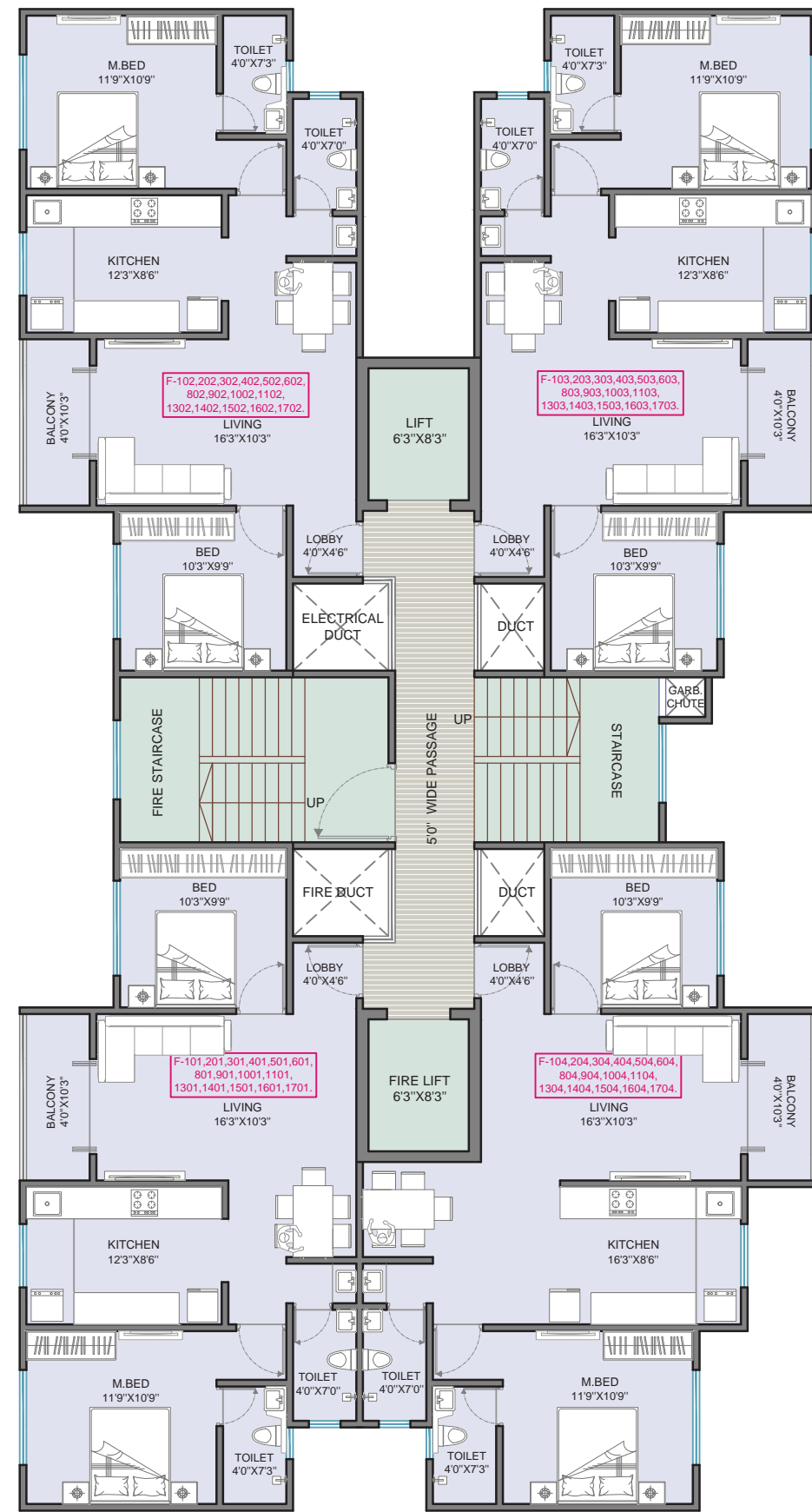


Flat No.	Flat Type	RERA Carpet Area	Total Area in Sq.Ft. Per Floor	Tenaments	Total Area in Sq.Ft.
701, 1201	2 BHK	70.49	1024.32	2	2048.64
702, 1202	3 BHK	85.30	1239.53	2	2479.06
703, 1203	1 BHK	57.39	833.96	2	1667.91
704, 1204	2 BHK	64.57	938.29	2	1876.58
705, 1205	2 BHK	64.57	938.29	2	1876.58
706, 1206	2 BHK	64.57	938.29	2	1876.58



F WING

TYPICAL FLOOR PLAN
1ST TO 6TH, 8TH TO 11TH,
13TH TO 17TH FLOOR



Flat No.	Flat Type	RERA Carpet Area	Total Area in Sq.Ft. Per Floor	Tenaments	Total Area in Sq.Ft.
101, 201, 301, 401, 501, 601, 801, 901, 1001, 1101, 1301, 1401, 1501, 1601, 1701	2 BHK	67.64	982.90	15	14743.56
102, 202, 302, 402, 502, 602, 802, 902, 1002, 1102, 1302, 1402, 1502, 1602, 1702	2 BHK	67.64	982.90	15	14743.56
103, 203, 303, 403, 503, 603, 803, 903, 1003, 1103, 1303, 1403, 1503, 1603, 1703	2 BHK	67.64	982.90	15	14743.56
104, 204, 304, 404, 504, 604, 804, 904, 1004, 1104, 1304, 1404, 1504, 1604, 1704	2 BHK	70.90	1030.28	15	15454.14



F WING

7TH & 12TH REFUGE FLOOR PLAN



Flat No.	Flat Type	RERA Carpet Area	Total Area in Sq.Ft. Per Floor	Tenaments	Total Area in Sq.Ft.
701, 1201	2 BHK	67.64	982.90	2	1965.81
702, 1202	2 BHK	67.64	982.90	2	1965.81
703, 1203	2 BHK	67.64	982.90	2	1965.81
704, 1204	1 BHK	59.27	861.28	2	1722.55



G WING

TYPICAL FLOOR PLAN
1ST TO 6TH, 8TH TO 11TH,
13TH TO 17TH FLOOR



Flat No.	Flat Type	RERA Carpet Area	Total Area in Sq.Ft. Per Floor	Tenaments	Total Area in Sq.Ft.
101, 201, 301, 401, 501, 601, 801, 901, 1001, 1101, 1301, 1401, 1501, 1601	2 BHK	66.61	967.94	14	13551.11
102, 202, 302, 402, 502, 602, 802, 902, 1002, 1102, 1302, 1402, 1502, 1602	2 BHK	66.40	964.88	14	13508.39
103, 203, 303, 403, 503, 603, 803, 903, 1003, 1103, 1303, 1403, 1503, 1603	3 BHK	85.31	1239.67	14	17355.43
104, 204, 304, 504, 604, 804, 904, 1004, 1104, 1304, 1404, 1504, 1604	3 BHK	85.31	1239.67	14	17355.43



G WING

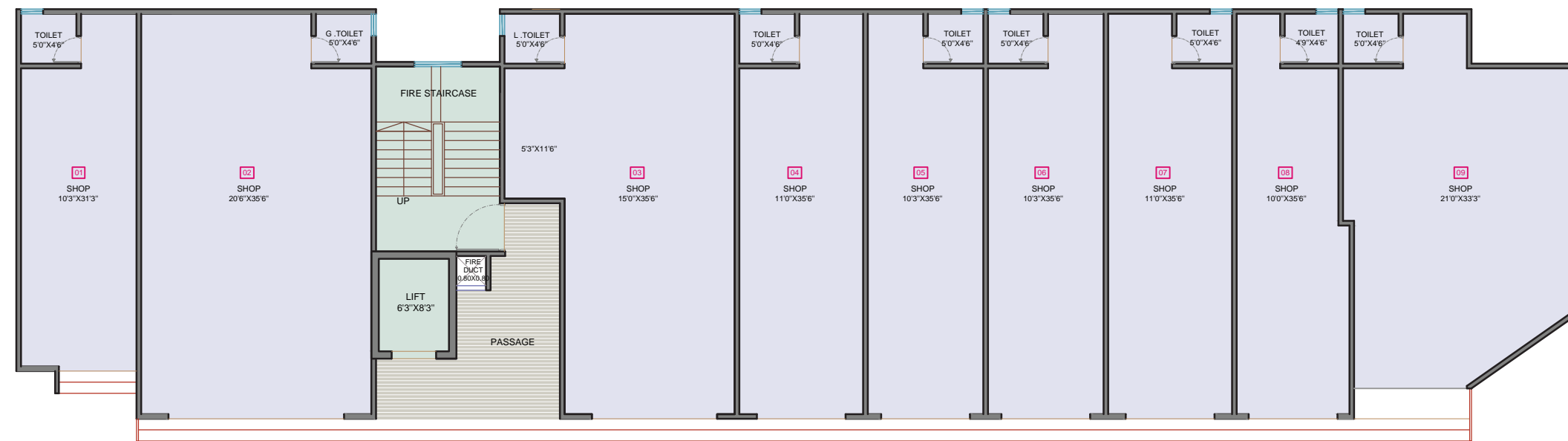
7TH & 12TH REFUGE
FLOOR PLAN



Flat No.	Flat Type	RERA Carpet Area	Total Area in Sq.Ft. Per Floor	Tenaments	Total Area in Sq.Ft.
701, 1201	2 BHK	66.61	967.94	2	1935.87
702, 1202	2 BHK	66.40	964.88	2	1929.77
703, 1203	1 BHK	50.12	728.31	2	1456.63
704, 1204	3 BHK	85.31	1239.67	2	2479.35



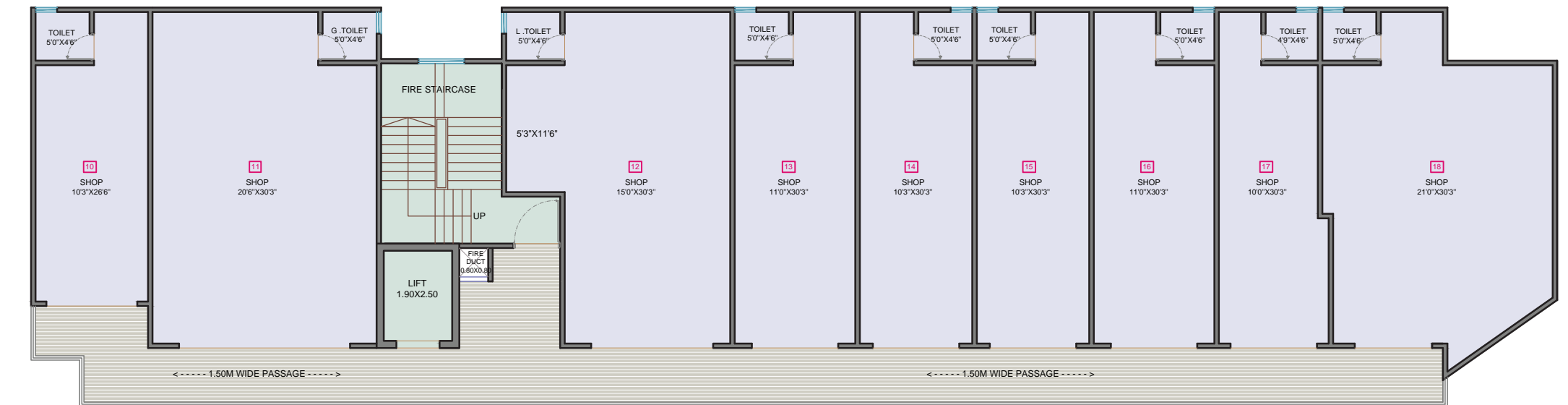
COMMERCIAL GROUND FLOOR PLAN



Flat Type	RERA Carpet Area	Total Area in Sq.Ft. Per Floor	Tenements	Total Area in Sq.Ft.
SHOP 1	30.06	452.99	1	452.99
SHOP 2	67.99	1024.58	1	1024.58
SHOP 3	58.35	879.31	1	879.31
SHOP 4	36.57	551.48	1	551.48
SHOP 5	34.14	514.48	1	514.48
SHOP 6	34.14	514.48	1	514.48
SHOP 7	36.57	551.10	1	551.10
SHOP 8	31.60	476.20	1	476.20
SHOP 9	55.52	836.66	1	836.66
TOTAL			9	5800.89



COMMERCIAL PODIUM FLOOR PLAN

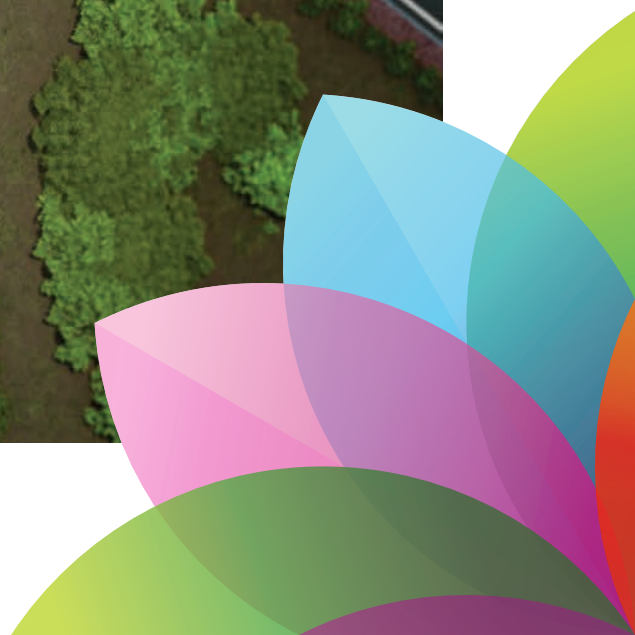


Flat Type	RERA Carpet Area	Total Area in Sq.Ft. Per Floor	Tenements	Total Area in Sq.Ft.
SHOP 10	25.43	383.22	1	383.22
SHOP 11	57.87	872.08	1	872.08
SHOP 12	50.87	766.59	1	766.59
SHOP 13	31.12	468.97	1	468.97
SHOP 14	29.06	437.92	1	437.92
SHOP 15	29.06	437.92	1	437.92
SHOP 16	31.12	468.97	1	468.97
SHOP 17	26.65	401.60	1	401.60
SHOP 18	52.85	796.43	1	796.43
TOTAL			9	5033.70



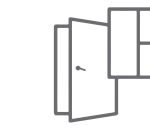
MASTER LAYOUT PLAN







SPECIFICATIONS



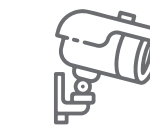
WINDOWS & DOORS:

- Flush Door with Laminate Finish
- Powder Coated Aluminium Windows
- 3 Track with Mosquito Net



CP & SANITARY FITTINGS:

- Jaquar Tap Fitting or Equivalent
- Jaquar Sanitary Fittings or Equivalent



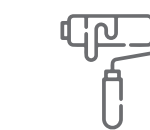
SAFETY & SECURITY:

- CCTV in Common Areas
- Firefighting System
- Boom Barrier at Entry Gate



HOME AUTOMATION:

- TV Point plus Telephone Point in Living Room
- AC Point in Master Bedroom
- Access Control in Lobby



PLASTER & PAINT:

- Acrylic Premium Emulsion Paint
- External Paint - Apex



PLUMBING:

- Solar Water in Master Bathroom
- UPVC Water Line



FLOORING:

- 1200 X 600 mm Vitrified Tiles - Oasis / Varmora or Equivalent in Internal Rooms
- 1200 X 600 mm Wall Tiles for Master Bedroom Toilet
- 600 X 300 mm Ceramic Tiles in Toilet
- Kitchen Otta & Windows Sill - in Granite

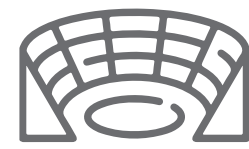


COMMON AMENITIES

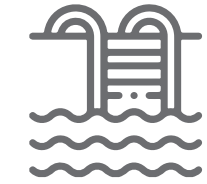
GROUND FLOOR:



KIDS PLAY AREA



AMPHITHEATRE

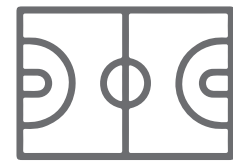


SWIMMING POOL



CLUBHOUSE

PODIUM FLOOR:



MULTIPURPOSE COURT



KIDS PLAY AREA



SENIOR CITIZENS CORNER



GAMES ZONE

TERRACE FLOOR:



MULTIPURPOSE LAWN



MULTIPURPOSE DECK



ROOFTOP CAFE



GAZEBO



REFLEXOLOGY ZONE



OPEN GYM



SUN DECK FOR YOGA, MEDITATION



GUPPA CORNER



STARGAZING DECK



CO-WORKING SPACE (SEMICOVERED)



LOCATION MAP



NEARBY LOCATIONS

SCHOOLS

- City Pride School - 9 min
- Priyadarshani School - 8 min
- DnyanBhakti International School - 5 min

COLLEGES

- MIT Arts Commerce & Science College - 9 min
- Rajmata Jijau College - 16 min

HOSPITAL

- Unity Hospital - 4 min

SHOPPING MALLS

- D-Mart - 10 min

UPCOMING DEVELOPMENT

- PIECC (Pune International Exhibition & Convention Centre)