



Siddhi

2 BHK RESIDENTIAL APARTMENTS | 222

Developed By : Nilesh N Patel & Others
Contact : 9898327567

Siddhi 222 is more than just a living delight with its 10-storied towers of 2 BHK residential wonders with state-of-the-art features and contemporary ambiance for you to have a right kind of lifestyle with sheer peace of mind.

A project decked up with all the necessities and comforts for a good life.



Siddhi 222

FEEL
LUXURIOUS
AMBIENCE
OF LIVING

 BOPAL



INDULGE
IN THE ART
OF LIVING





ESCAPE TO A
WORLD OF ABSOLUTE
LUXURY


Siddhi
—222—

THE COZY
INTERIORS
YOU CALL
HOME

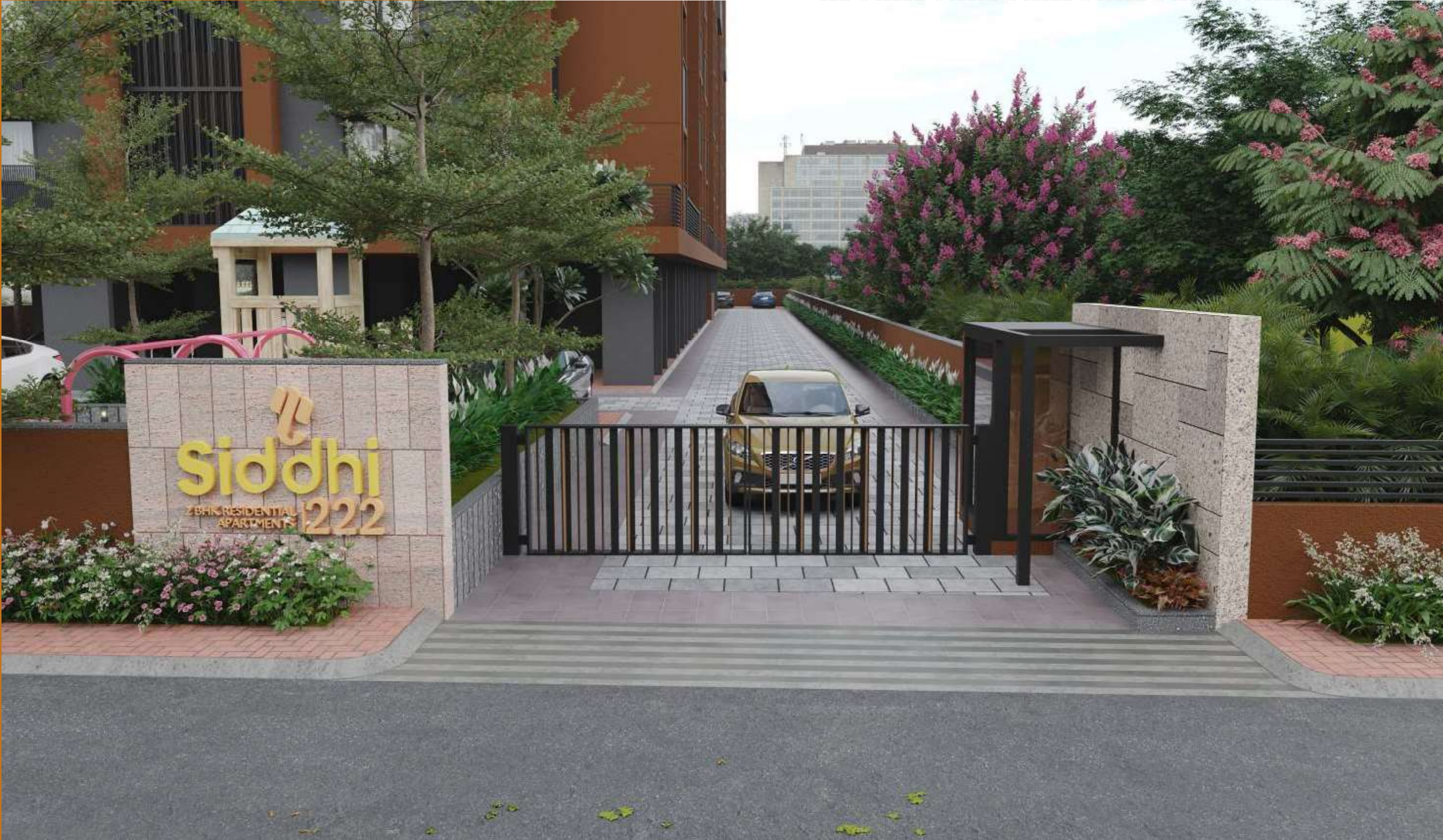


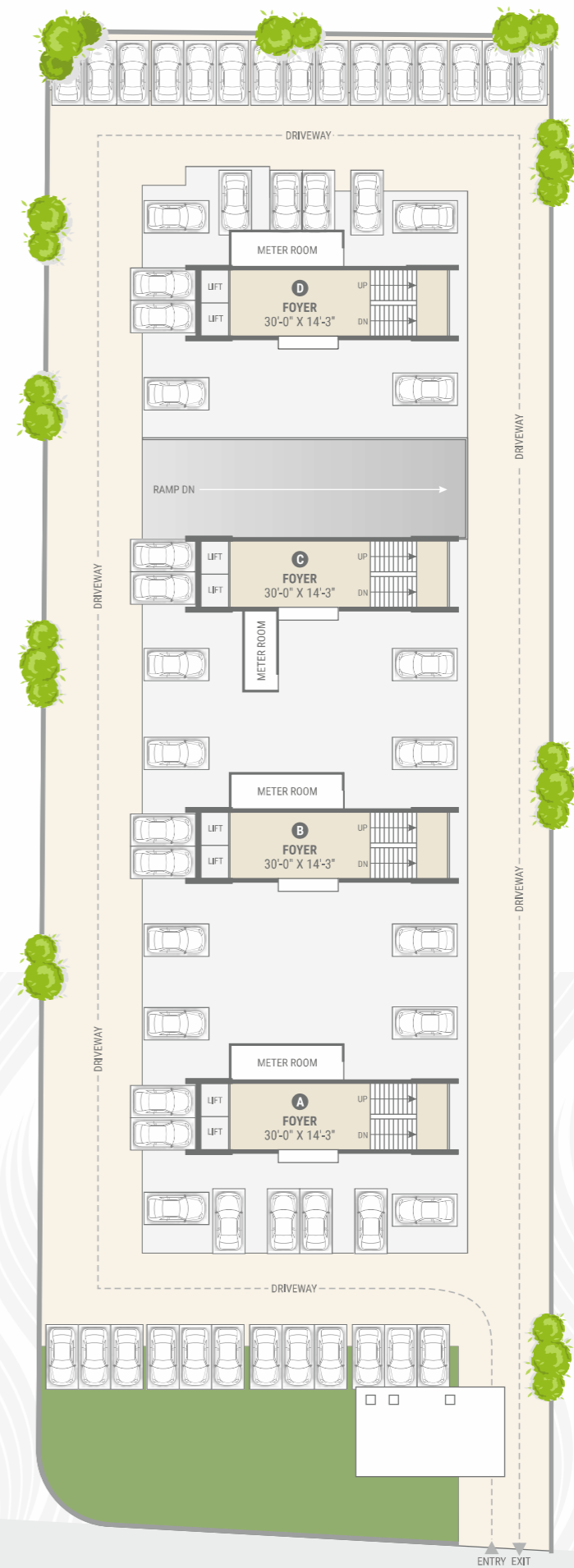
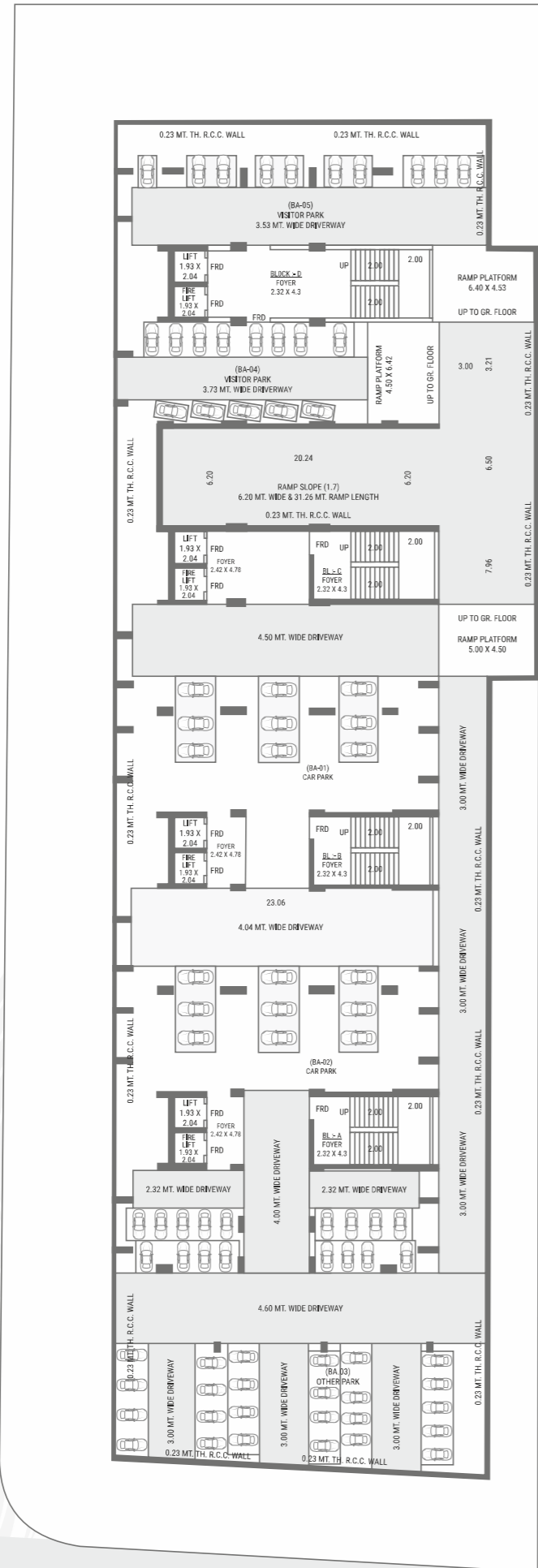


WHERE **SERENITY**
MEETS GRANDEUR

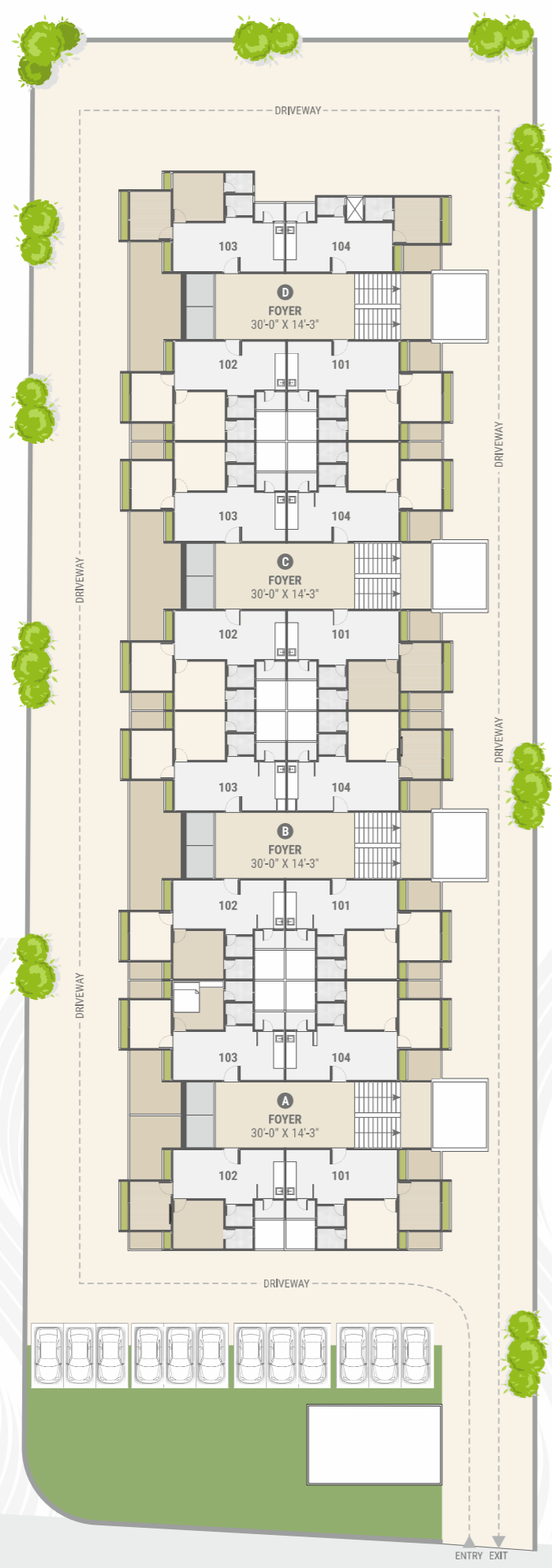

Siddhi
— 222 —

DISCOVER PREMIUM
WAY OF LIVING

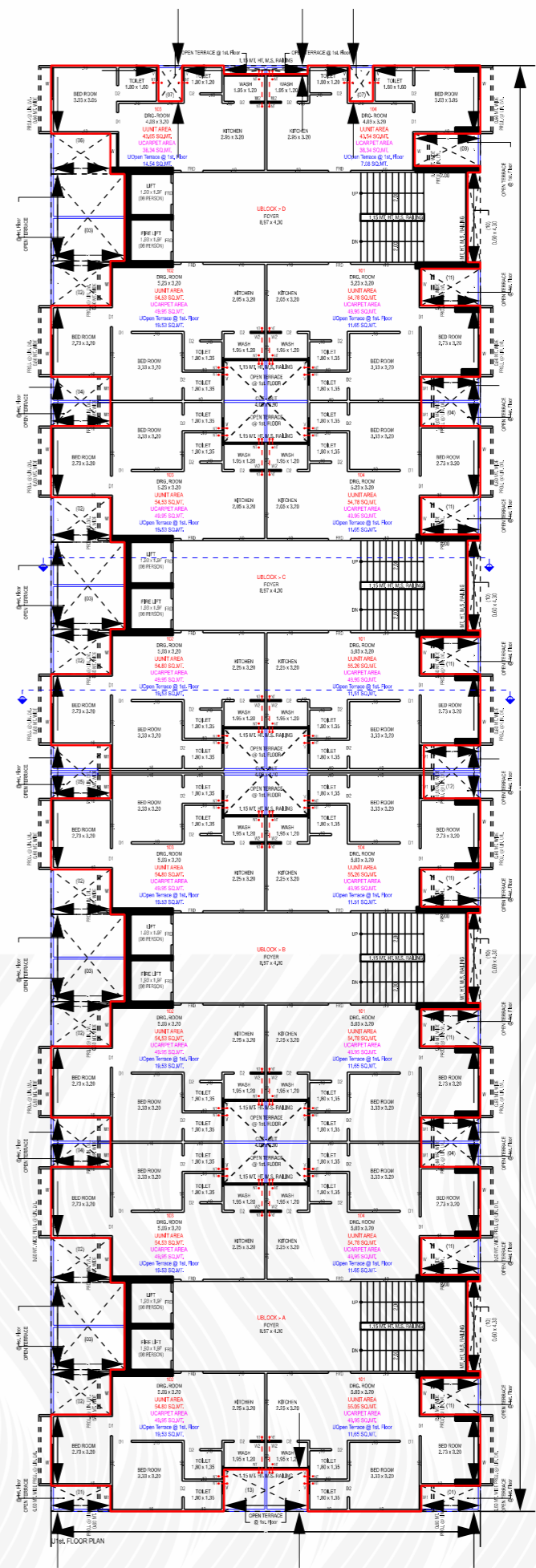




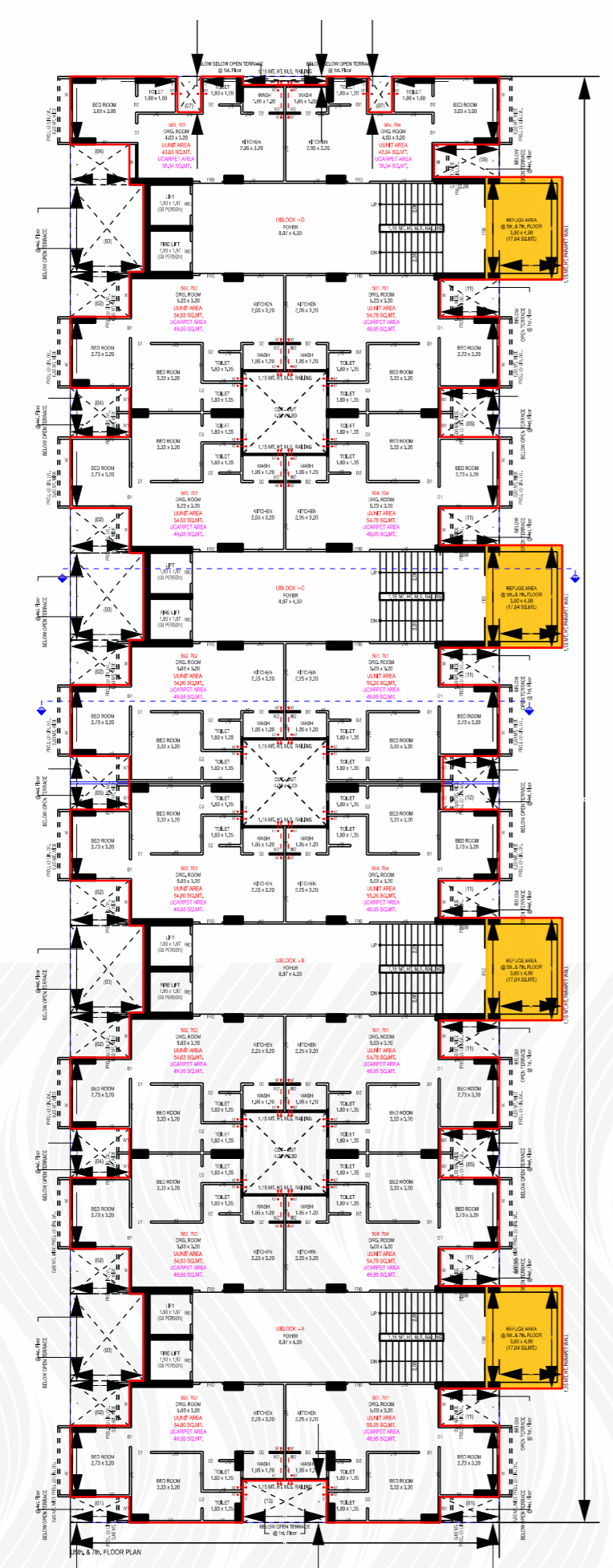
TYPICAL 2,3,4,6,8,9 FLOOR PLAN



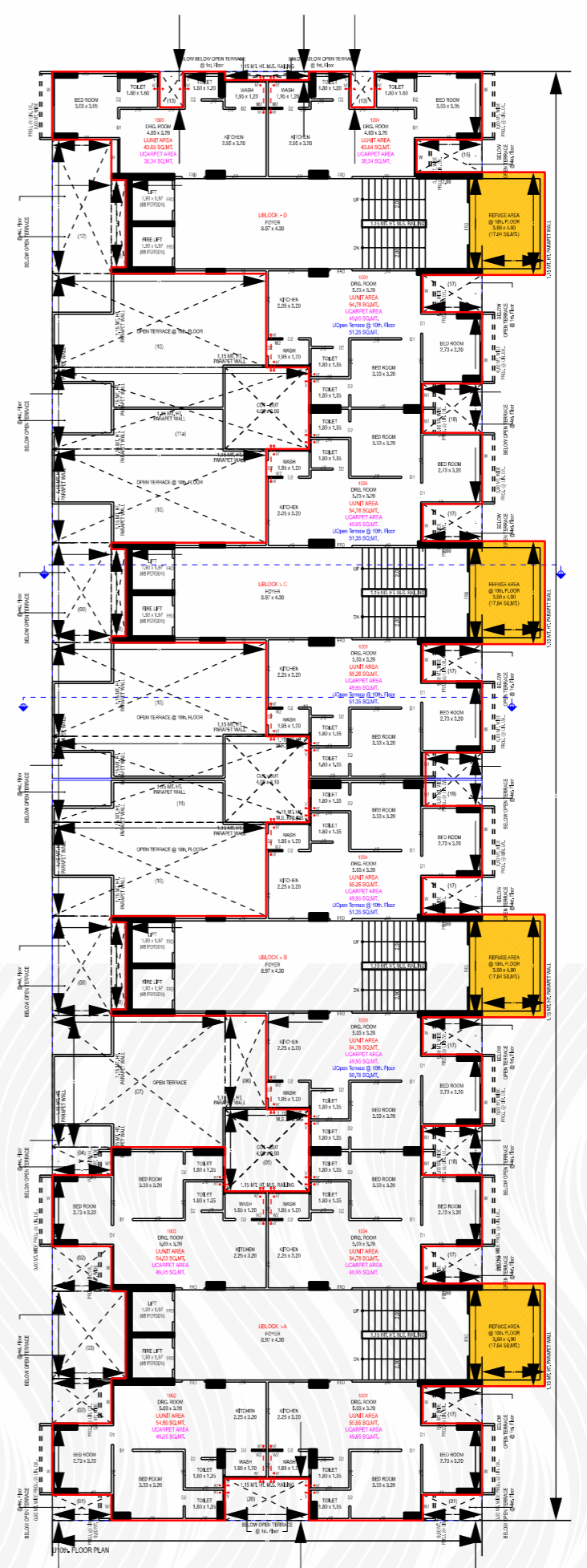
1st FLOOR PLAN



5th & 7th FLOOR PLAN

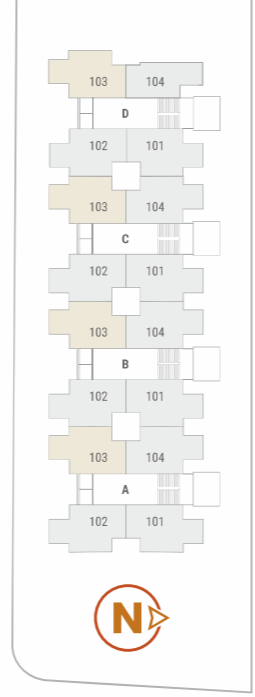


10th FLOOR PLAN

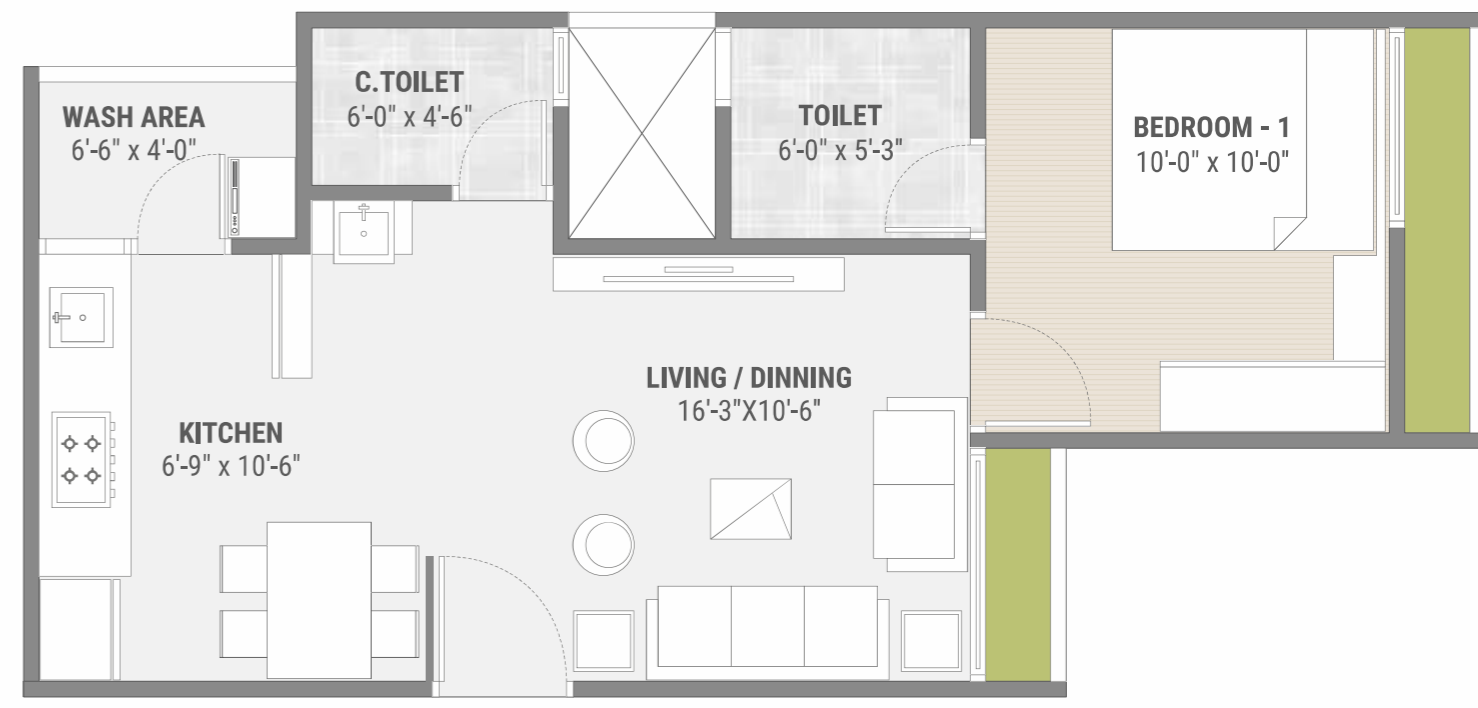
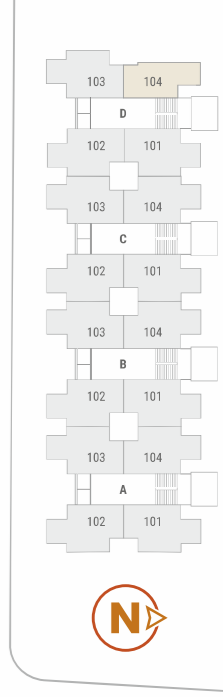


BLOCK - A	
UNIT NUMBER	
1001	
1002	
1003	
1004	
BLOCK - B	
UNIT NUMBER	
1001	
1004	
BLOCK - C	
UNIT NUMBER	
1001	
1004	
BLOCK - D	
UNIT NUMBER	
1001	
1003 (1BHK)	
1004 (1BHK)	

2 BHK UNIT PLAN



1 BHK UNIT PLAN



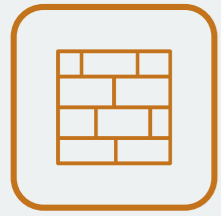
LIFESTYLE AMENITIES



DECORATIVE
FOYER



ENTRANCE
GATE



DESIGNER
COMPOUND WALL



POWER
BACKUP



2 AUTOMATIC ELEVATORS
IN EACH BLOCK



SOLAR
PANEL



VASTU COMPLIANT
EAST-WEST ENTRY



CCTV
CAMERAS



24 HOUR
WATER SUPPLY



FIRE
SAFETY

SPECIFICATIONS



STRUCTURE

Quality controlled Earthquake resistance, R.C.C. framework structure.
Basement for ample car parking facility.
Professionally water-proofed terrace.



WALL FINISH

External : Plaster with acrylic paint.
Internal : Single coat mala plaster with putty finish.



FLOORING

Good quality vitrified tiles in entire apartment.



KITCHEN

Platform mirror polished granite with S.S. Sink.
Decorative tile dado upto lintel level on the walls above platform in kitchen and wash area.

DOORS & WINDOWS

Main entrance door with decorative laminate and hi-quality locking arrangement.
Internal flush doors with wooden/ granite frames & premium SS hardware and handles.
Granite jambs for all windows.



ELECTRIFICATION

Concealed Copper wiring with M.C.B.
Premium quality modular switches.
Electrical points for Air Conditioner and Geyser points in all rooms and bathrooms.
Provision for DTH connectivity.
Provision for hi-speed internet connectivity.



BATHROOM

Bathroom walls-decorative tiles dado upto lintel level.
Premium quality sanitary ware & fittings in all bathrooms.
Hi-quality concealed CPVC/UPVC plumbing lines.



SITE ADDRESS : SIDDHI 222

OPP. BOPAL LAKE, B/H. KAMLA PARK SOCIETY, BOPAL, AHMEDABAD – 380058.

FOR INQUIRY, CONTACT: +91 87359 21575

RERA REGISTRATION NO.

ARCHITECT **S.MEVADA**
ARCHITECTS

STRUCTURE **DIAGRID**
CONSULTANTS

DISCLAIMER : The developers reserve the rights to change or revised the project or any details there of Government levies like stamp duty, registration charges & other legal expenses like AUDA, GEB charges, GST, etc. are to be borne by the members. • This brochure is not to be treated as a part of legal document. It is only for presentation purpose, easy display and understanding of the project. • Only internal changes shall be allowed with prior permission and shall be charged extra in advance. • The photographs and artistic impressions are for reference only.



Siddhi
—222—

Developed By : Nilesh N Patel & Others
Contact : 9898327567