



INFRA DEVELOPERS

<http://svsinfra.in/dev/>

SVS's
Silver Oak



SVS's SILVER OAKS

SVS's
SILVER OAKS

PREMIUM

4 BHK ROW HOUSES

@ HEELALIGE, Chandapura, Bengaluru

About Project

WELCOME TO

SVS'S
Silver Oak

SVS's Silver Oak area elegant and sophisticated luxury villas located at a prime location at Heelalige, Chandapura TMC, Hosur Main Road, Bangalore. It is locality is well connected to Hosur Road, Sarjapura Road and Anekal Road. SVS's Silver Oaks is located close to Bommasandra, Electronic City.

Owning these luxury Row Houses will give the home owners an escape to their own piece and feel to live without leaving the city. Find delight every morning as you wake up to lush green stretches and has ample open spaces along with a day-long natural ventilation. 4 BHK Premium Row Houses with private garden and no common wall.

**4 BHK LUXURIOUS
ROW HOUSES**



Master Plan

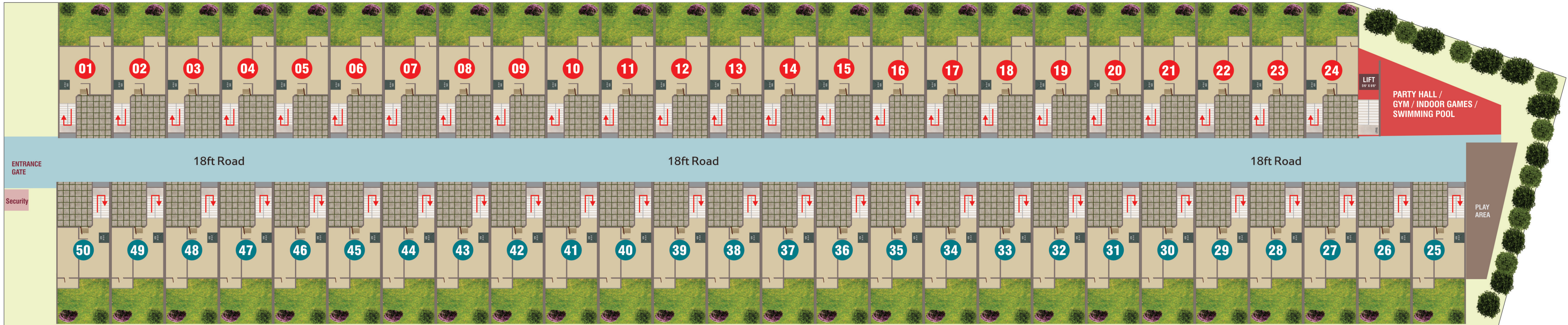


A place for
fresh air and
best views

AREA DETAILS

Row House No	Facing	Total Area
01 to 23	WEST	2,650 Sqft
24	WEST	3,050 Sqft
25 to 50	EAST	2,650 Sqft

North By Road

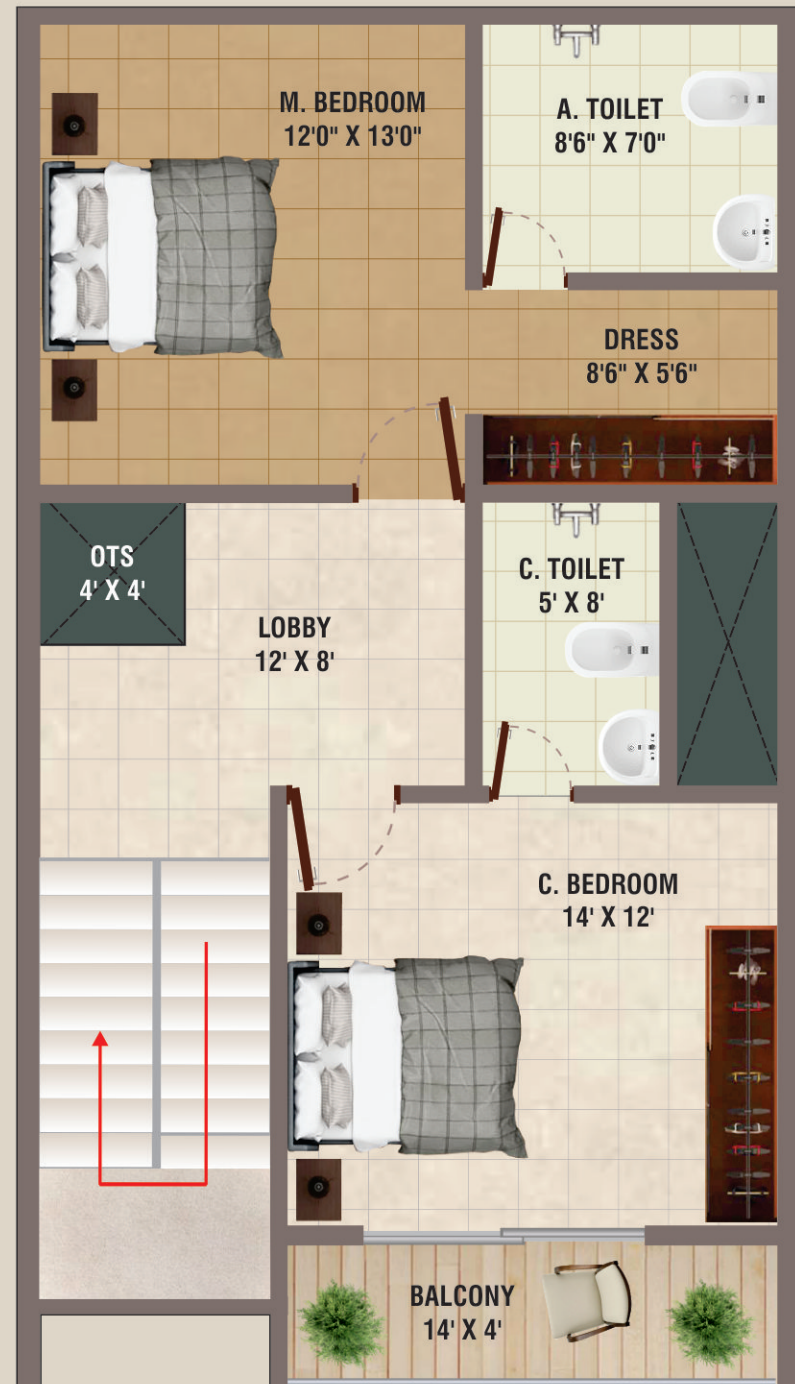


TYPICAL FLOOR PLANS

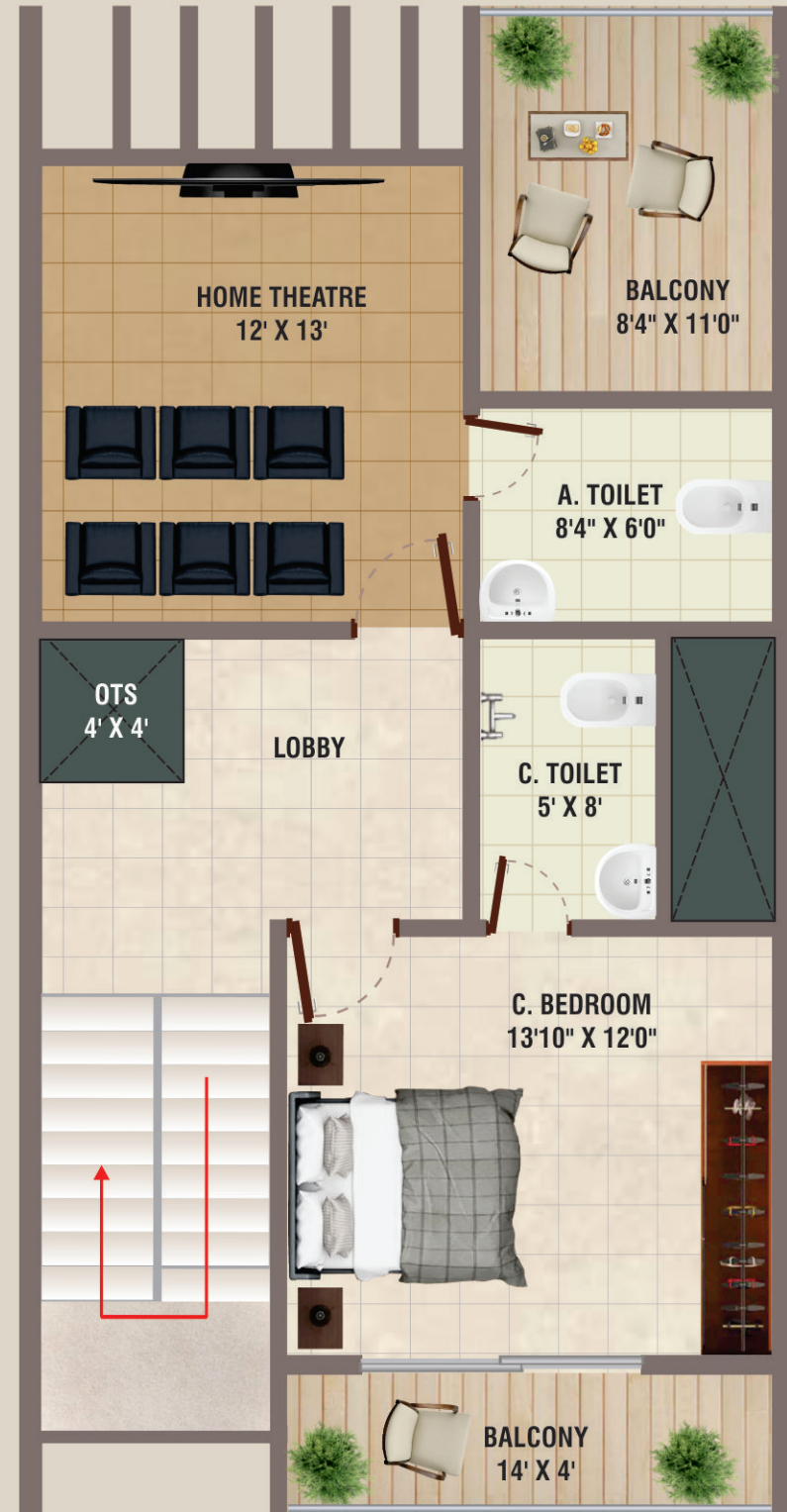


GROUND FLOOR

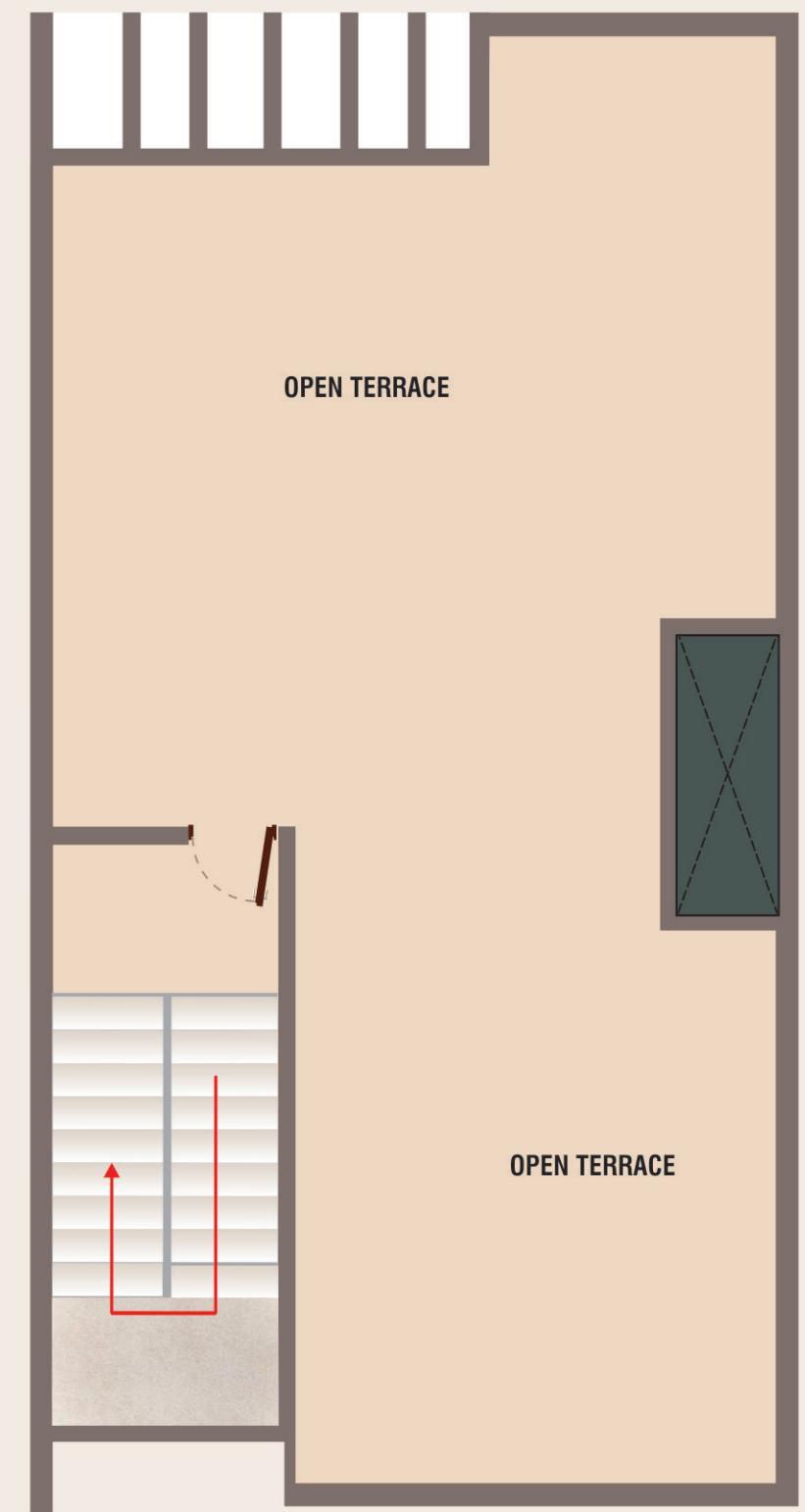
EAST FACING



FIRST FLOOR



SECOND FLOOR



TERRACE FLOOR



TYPICAL FLOOR PLANS

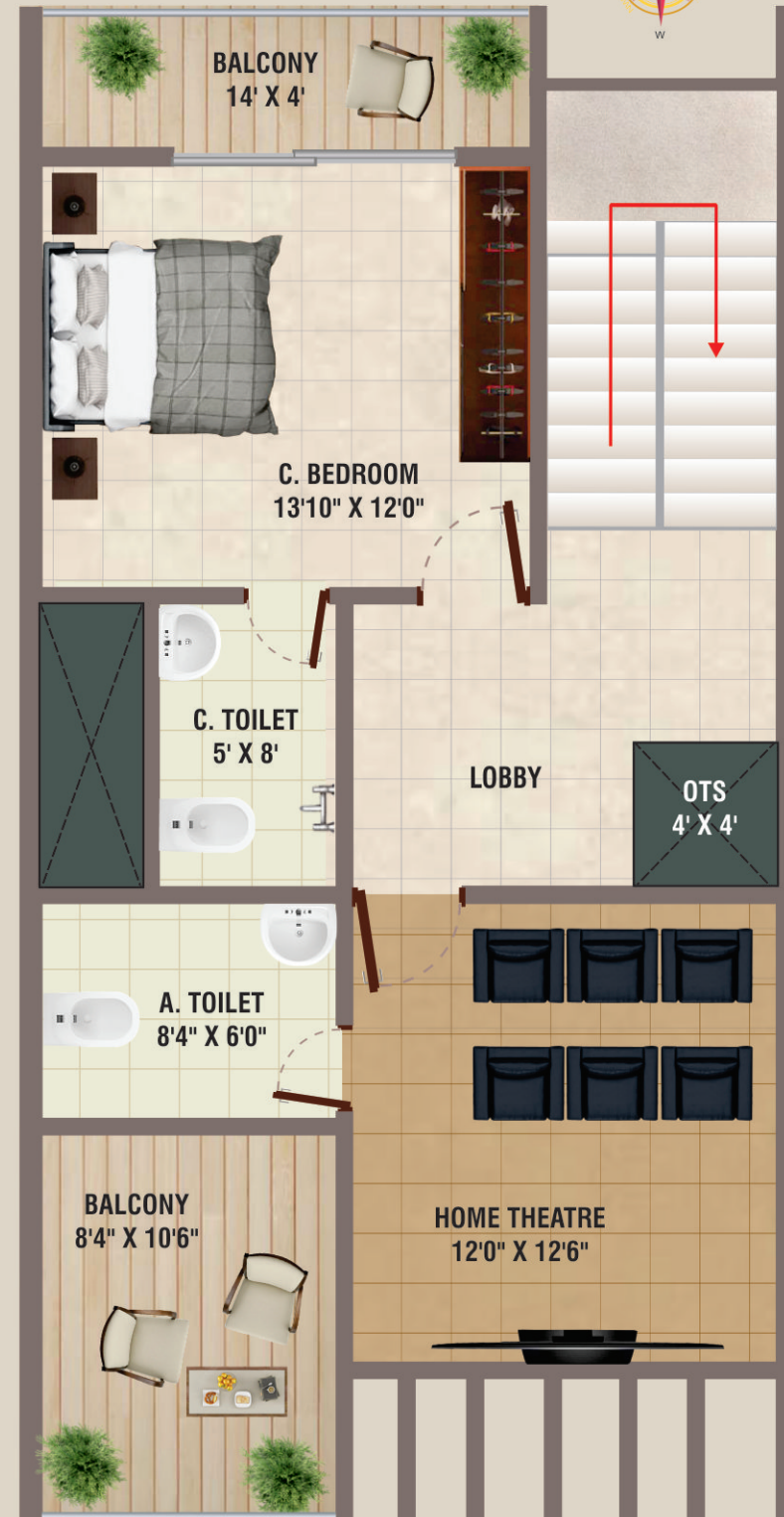
WEST FACING



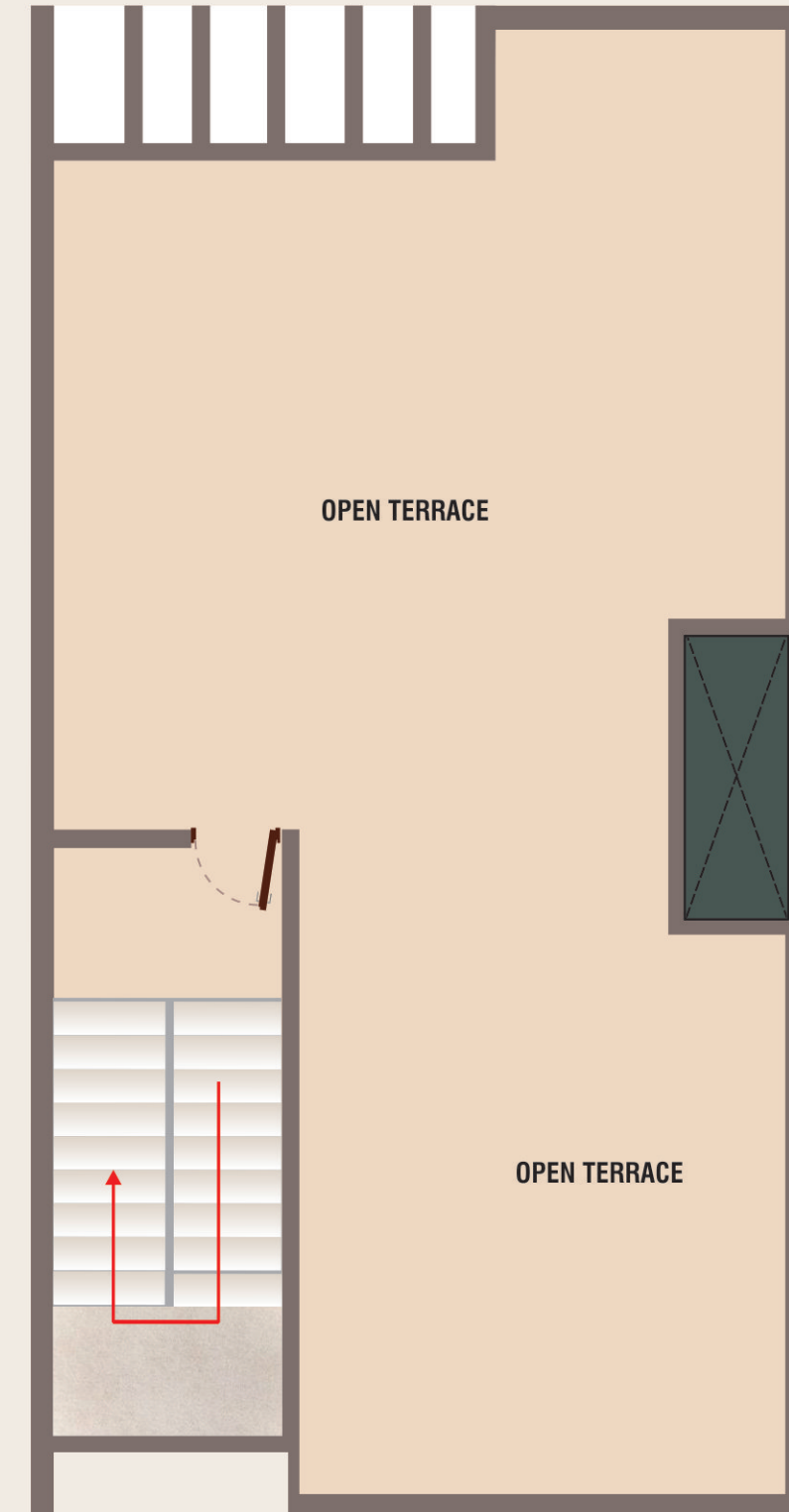
GROUND FLOOR



FIRST FLOOR



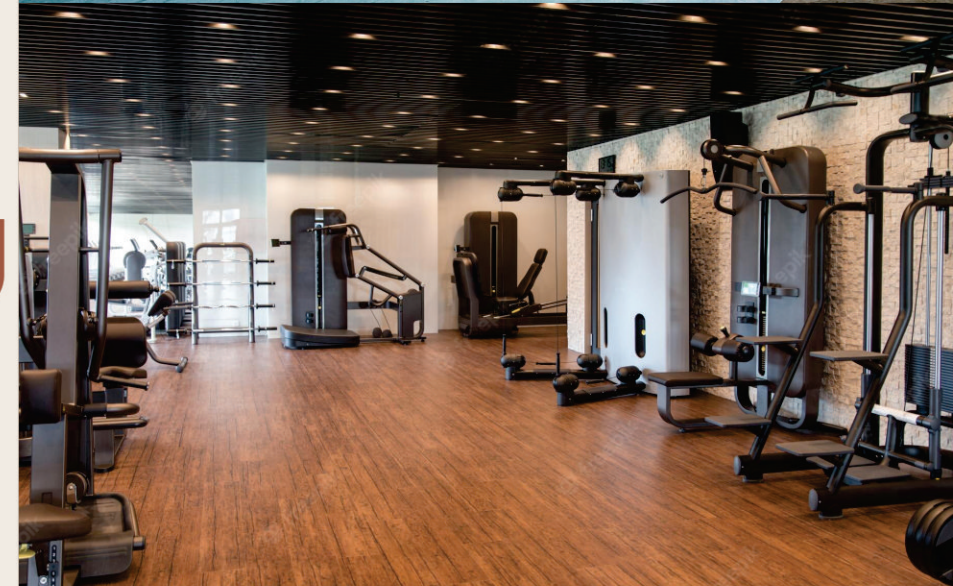
SECOND FLOOR



TERRACE FLOOR

- ◆ Party Hall
- ◆ Indoor Game
- ◆ Gym
- ◆ Swimming Pool
- ◆ Children Play Area
- ◆ 24 hrs Borewell Water
- ◆ Generator Backup
- ◆ CC Camera

AMENITIES



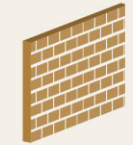


SPECIFICATIONS



STRUCTURE

Framed RCC Structure with RCC beams and columns.



WALLS

- ◆ Putty finished acrylic Emulsion painting for all interior walls and ceiling.
- ◆ Exterior wall surfaces painted with exterior emulsion paint.



DOORS

- ◆ Main door frames of Teakwood, Shutters of teak veneer and melamine polished.
- ◆ Inside Doors skin doors with melamine polished.



FLOORING

- ◆ Vitrified Tiles for living, dining, bedrooms & Kitchens areas.
- ◆ Wooden flooring in one bedroom.
- ◆ Anti skid Ceramic tiles for all toilets, balconies, utility area and parking area.
- ◆ Staircase granite flooring with stainless steel railing.
- ◆ Granite flooring in ground floor.



KITCHEN

- ◆ Polished Granite counter top.
- ◆ Standard size stainless steel sink with drain board.
- ◆ Ceramic glazed tiles dado up to 2'0" ht above platform.
- ◆ Provision for Aqua-guard, Exhaust Fan and adequate power points in Kitchen.
- ◆ Provision for Washing machine point with plumbing & water drain line in utility area.



ELECTRICAL

- ◆ T.V. and telephone points in all bedrooms and living area.
- ◆ Electrical switches of Anchor Roma/Havells or similar brand.
- ◆ One Earth Leakage circuit Breaker (ELCB) for each Row House.
- ◆ Earthing with copper wire using loop system.
- ◆ A/C point in all bedrooms and living area.
- ◆ CCTV provision with cabling inside the house.



WINDOWS

- ◆ UPVC sliding windows with guard bars & plain Glass.
- ◆ Mosquito mesh shutter in all bedrooms, kitchen, living and dining room.
- ◆ Tuffen glass railing with stainless steel frame in 2 balconies



BATHROOMS

- ◆ Pressure checked plumbing and drainage lines to ensure total leak proof toilets.
- ◆ Jaquar / Hindware / Parryware or equivalent C.P. fittings
- ◆ White colored Sanitary Ware
- ◆ Hot and Cold water tap with diverter and overhead shower.
- ◆ Hot and Cold water tap for wash basin in all toilets.
- ◆ Wall Hang Commode in all toilets.
- ◆ Counter top wash basin in all toilets.
- ◆ Provision for Exhaust Fan & Geyser.
- ◆ Select glazed / ceramic / tile dado up to 7'0" height



BACKUP

Stand by sound proof generator for common area, Lifts and water pump for each house.



WATER SUPPLY

Water Supply from Borewell



LIFT - 1 No

for Party hall, Gym & Swimming Pool

SECURITY

Round clock security
24 hrs CCTV surveillance

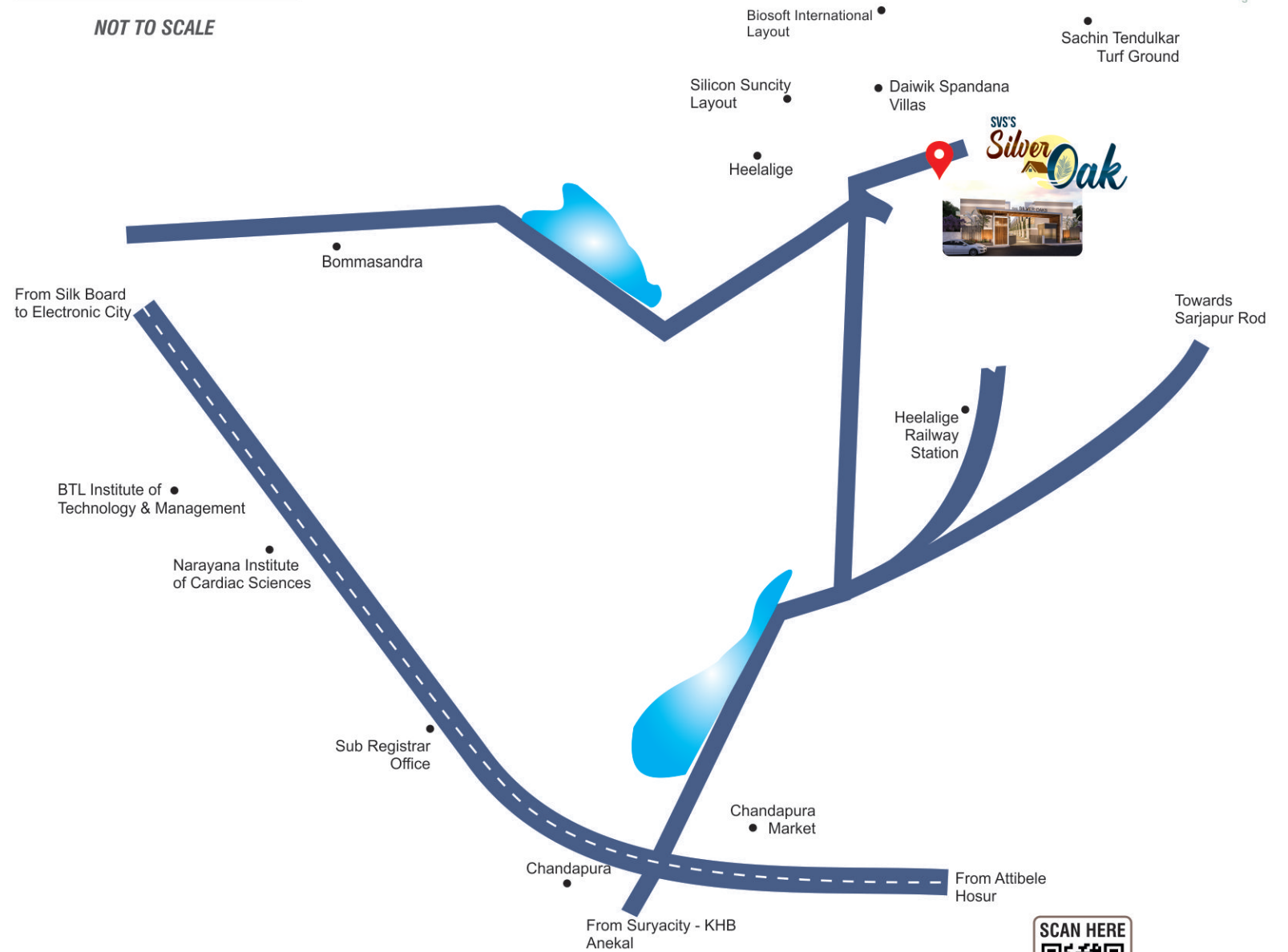


Proximity

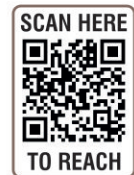
- ◆ Narayana Hospital
- ◆ Sparsh Hospital
- ◆ Bommasandra Industrial Area
- ◆ Electronics City
- ◆ BTL College
- ◆ Manipal International School
- ◆ Vismaya School & College
- ◆ Bangalore College of Engineering
- ◆ Bangalore College of Nursing
- ◆ D- Mart

LOCATION MAP

NOT TO SCALE



Disclaimer : This Brochure is only for conceptual presentation of the project and not a legal offering.
The developer/ architect reserves the right to change any or all of these in the interest of the development.



Survey No. 44/1, Heelalige Village, Attibele Hobli,
Anekal Taluk Bengaluru - 560 099
Email : svsinfradevelopers2021@gmail.com
Web : <http://svsinfra.in/dev/>