



R.C.C Consultant  
S.R. Consultants

DEVELOPER  
AAYUSHI CORPORATION

Contact  
9967399759



SANDEEP  
SAWANT  
GROUP

ARCHITECTS  
SATISH V. AHUJA

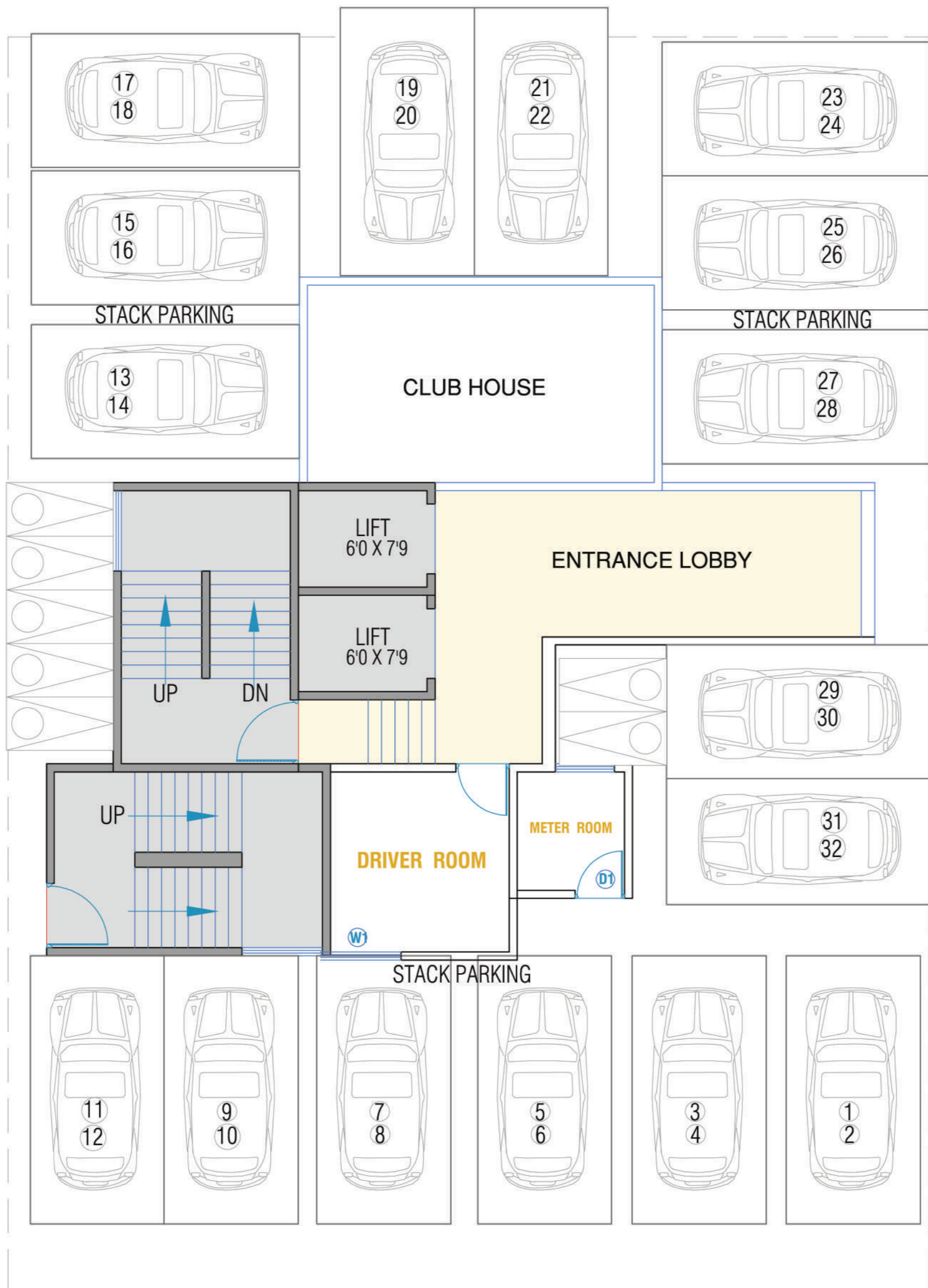
STRATEGIC PARTNER SANDEEP SAWANT GROUP



-----6 M DRIVE WAY -----

-----6 M DRIVE WAY -----

**PATH WAY**



GATE-1

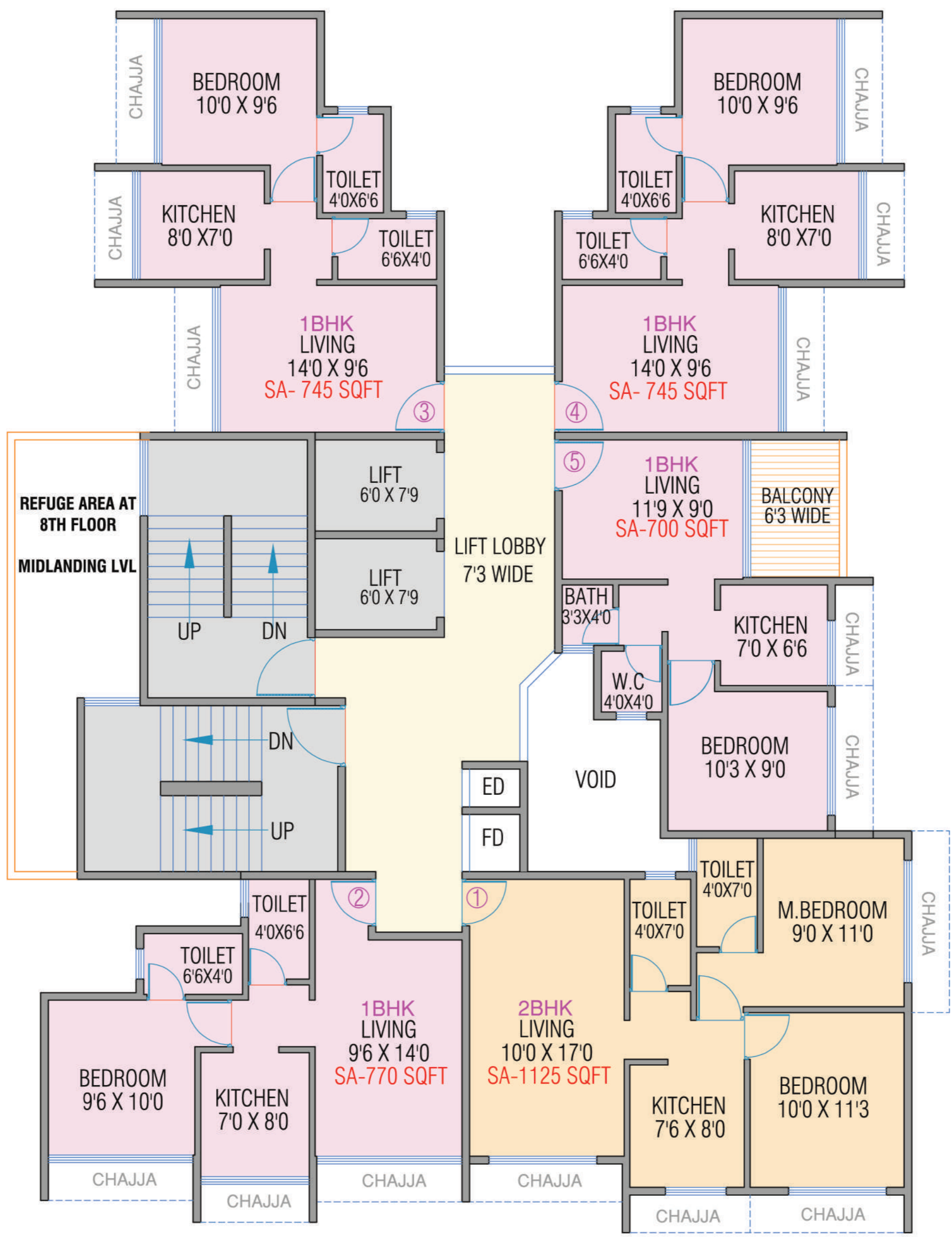
GATE-1

----- 20.00M WIDE ROAD -----

**GROUND FLOOR PLAN**



ALT.20  
21.04.2023



----- 20.00M WIDE ROAD -----

PATH WAY

1ST TO 11TH FLOOR PLAN



ALT.20  
21.04.2023



# PANVEL: IF IT'S HAPPENING, IT'S HERE!

Today, the action has shifted to Panvel. It is the new centre of development. In addition to infrastructural facilities, Panvel also has superior air quality, dedicated open spaces, proximity to nature and excellent connectivity. There is tremendous government impetus that's lending momentum to the whole process.



Image for Representation

## **Upcoming Navi Mumbai International Airport (NMIA):**

A game changer that makes Panvel the mega destination of the future, the airport is being developed on a public-private partnership basis between Government agency CIDCO and GVK-Mumbai International Airport Limited (MIAL) .

## **Upcoming Mumbai Trans Harbour Link:**

Envisioned as the longest sea bridge in India and the second longest sealink in the world, it provides connectivity to NMIA from Sewri in South Mumbai to Nhava Sheva. The Mumbai Trans Harbour Link (MTHL) is an under-construction 21.8 km freeway grade Road Bridge connecting Mumbai to Navi Mumbai.

## **Upcoming Virar-Alibaug Multimodal Corridor:**

This 126-km-long corridor enables connectivity to NMIA and other important nodes of Navi Mumbai from the western suburbs.

## **Panvel-Karjat Suburban Rail Line:**

The existing Mohape railway station is just 1.5 kms away, with 2 suburban lines under construction.

## **Navi Mumbai Airport Influence Notified Area (NAINA):**

Panvel is part of this demarcated area of a 25-km radius of the airport. NAINA is envisioned as a prominent financial centre and potentially 'The Biggest Smart City in India' with growth centres as hubs of development.

## **CST-Panvel Fast Track:**

To ensure quick access to and from Mumbai.

## **MIDC, PORT & SEZs:**

Proximity to Industrial and Special Economic Zones.

## **Strategic location on the Old Mumbai-Pune Highway:**

Ensures fast connectivity to the next megacity, Pune.

## **Upcoming Metro Rail Line in Navi Mumbai:**

For enabling more convenient access across.

# YOU WILL NEVER BE TOO FAR FROM WHERE YOU HAVE TO GO.



## TRANSPORT NODES WITHIN 10 MINS

Mumbai-Pune Expressway | Mohape Railway Station | Thombrewadi Bus Stop



## EDUCATIONAL INSTITUTIONS WITHIN 15-20 MINS

St. Wilfred's School | Delhi Public School  
DAV Public School | St. Wilfred's College of Arts & Commerce | Chhatrapati Shivaji Maharaj Institute of Technology | Amity University



## HOSPITALS WITHIN 10 MINS

Dhirubhai Ambani Hospital, Lodhivali | MGM Hospital



## MALLS AND ADVENTURE PARKS WITHIN 20-30 MINS

Orion Mall | K Mall | Golf Course | Adlabs Imagica | Della Adventure Park



## IMPORTANT HUBS WITHIN 10-15 MINS

Upcoming Navi Mumbai International Airport  
Palaspe Phata | Panvel Railway Station



Image for Representation





Artist's Impression

## A RARE CHOICE OF THE CHOSEN FEW.

You'll be spoiled for choice. Indulge more with spacious, well-designed bedrooms that welcome air and light in abundance. Or enjoy a soothing green view that will lift your spirits.



# INDULGE YOUR TASTE BUDS.

A spacious kitchen will bring out the chef in you.



# LOCATION MAP



International Airport



Trans Harbour Link



Multimodal Corridor



SEZs



JNPT



Suburban Rail & Metro Lines



\*Map is not in actual scale and is for reference only. Approximate distances and time calculated on Google Map.









# **SANDEEP SAWANT**

— GROUP —

**BHOOMI LANDMARK SECTOR 17, OFFICE NO. 408/409,  
PLOT NO. 34/34A, KHANDA COLONY, NEW PANVEL EAST,  
NAVI MUMBAI, MAHARASHTRA - 410206**