

THE ELITE EXTRAVAGANZA
Is now affordable to everyone



THE BREEZE
Lifestyle Apartments @ Manchirevula



CURRENT
OPULENT
MODERN
EDIFICE

*COME



WELCOME TO THE PERFECTLY PLANNED PLACE OF YOUR FANTASIES. BRING YOUR JOY INTO THIS JOYLAND AND DOUBLE THE ELATION. MAKE THIS IDYLIC 5 FLOORED ADOBE YOUR COMFORT ZONE. IN ALL 70 UNITS, EACH ONE STANDS OUT IN ITS FINESSE. CHOOSE YOUR HOME ACCORDING TO YOUR SPECIFICATIONS, AND START LIVING YOUR FANTASY THE NEXT MOMENT. THE ONLY STEP THAT REMAINS, IS FOR YOU TO COME.

THE BREEZE
Lifestyle Apartments @ Manchirevula

| COME | LIVE | LIFE | AT | FINE | HOME |



THE BREEZE
Lifestyle Apartments @ Manchirevula



LUXURIOUS INNOVATIVE VIRTUOUS ESTABLISHMENT



THE BREEZE
Lifestyle Apartments @ Manchirevula

*LIVE

A TESTAMENT TO THE ART OF PRECISE PLANNING. EVERY DETAIL HAS BEEN CAREFULLY CONSIDERED, FROM THE INITIAL DESIGN TO THE FINISHING TOUCHES. THE PROJECT TEAM HAS COLLABORATED SEAMLESSLY TO ENSURE THAT THE ARCHITECTURE PROCEEDS SMOOTHLY AND EFFICIENTLY, RESULTING IN A HIGH-QUALITY FINISHED PRODUCT, YOUR DREAM HOME.



LEGEND

- ① ENTRY & EXIT
- ② DRIVE WAY
- ③ KIDS POOL
- ④ SEATING AREA
- ⑤ SHUTTLE COURT
- ⑥ CHILDREN PLAY AREA
- ⑦ HALF BASKETBALL COURT
- ⑧ TOTLOT

SUPER STRUCTURE

9" thick Red Bricks for external walls.
4" thick Red Bricks for internal walls.

STRUCTURE

Stilt + 5 Stories of Apartment with R.C.C. framed structure

MAIN DOOR

Good Quality Teakwood/Ravela Door frame and shutter with panel.
Shutter finished with melamine matt polish fixed with good quality brass fittings.

GENERATOR BACKUP

DG power backup for each apartment Stand by Generator support for one fan and one light in living, Hall & master bedroom.
Standby generator back-up for lights in common area is 100%.

WINDOWS

Aluminum/ UPVC sliding windows with plain glass,
ventilators with translucent glass in toilets.

THE BREEZE

Lifestyle Apartments @ Manchirevula

FLOORING

24"X24" vitrified tiles for living, dining, bedrooms and Kitchen.

INTERNAL DOORS

Ravela Door Frames and Doors with reputed make fittings.

KITCHEN

- > Granite platform with stainless steel sink.
- > Provision for plumbing points for sink.
- > Cladding with glazed tiles above the kitchen platform upto 2" heights for modular style.
- > Provision for water purifier in kitchen.
- > Power plug outlets for cooking range micro oven, refrigerator, mixer grinder and exhaust fan in kitchen.

PAINTING

- > Two coat putty finish and Two Coat Asian premium emulsion for internal walls.
- > EO Texture, Dam-proof Primer and Two Coat Asian Apex Paint for External Walls.

BATHROOMS

- > Ceramic tile dado upto 6 6" heights.
- > Wash basin in master bedroom toilet & Hall, EWC for all toilet with flush tank and provision for geyser & exhaust fan.

WATER SUPPLY

- > Water supply with over head Tank.
- > Borewell water supply and a water sump Best Quality CPVC pipes for water supply lines.
- > All sewerage and rain water lines are super quality PVC Pipes.
- > All plumbing lines are pressure tested.
- > All fixers are CP coated best quality standard branded make.
- > Hot & cold wall mixer with shower, provision for geyser.

ELECTRICAL

- > One TV. Point in hall and Master Bedroom.
- > Fire resistant electrical wires of good quality.
- > Elegant designer modular electrical switches for Legrand/Any ISI Brand.
- > Provision for A/C in master bedroom.
- > Earth leakage circuit breaker(ELCB) for each flat.
- > MCB for each room and the main supply.
- > 3-phase supply for each unit and individual

LIFT

2 lift of 8 passengers capacity each of best quality.

SPECIFICATIONS

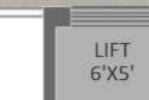
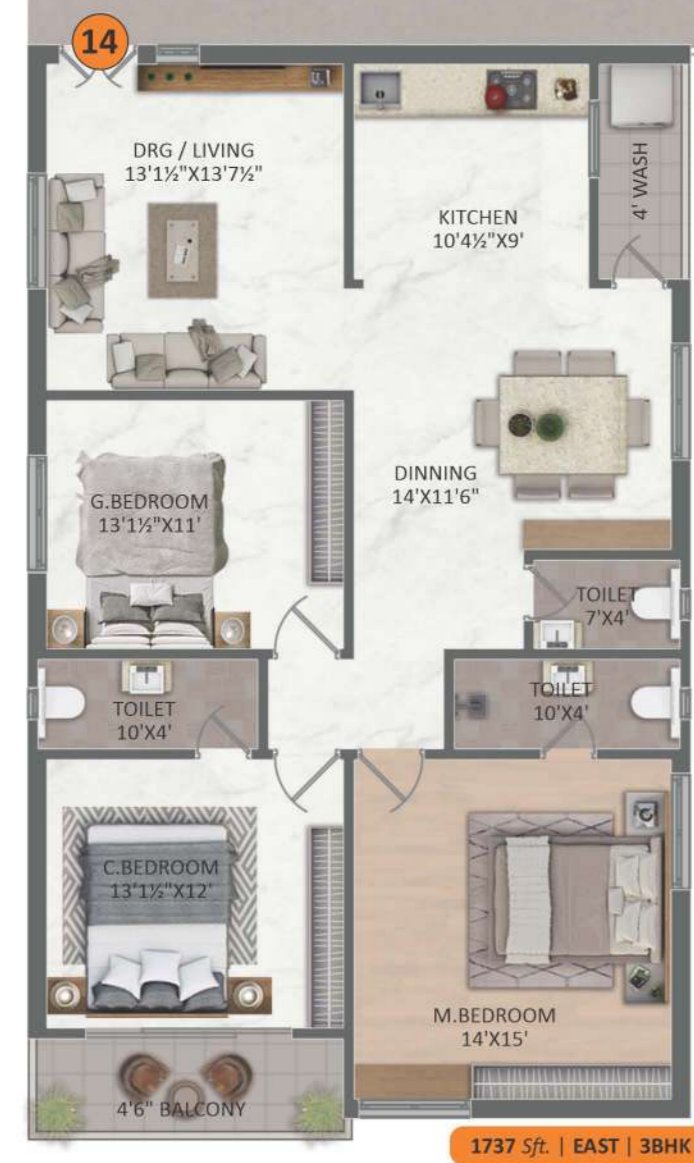
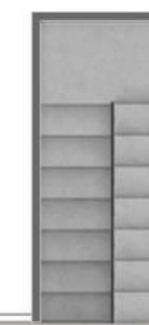
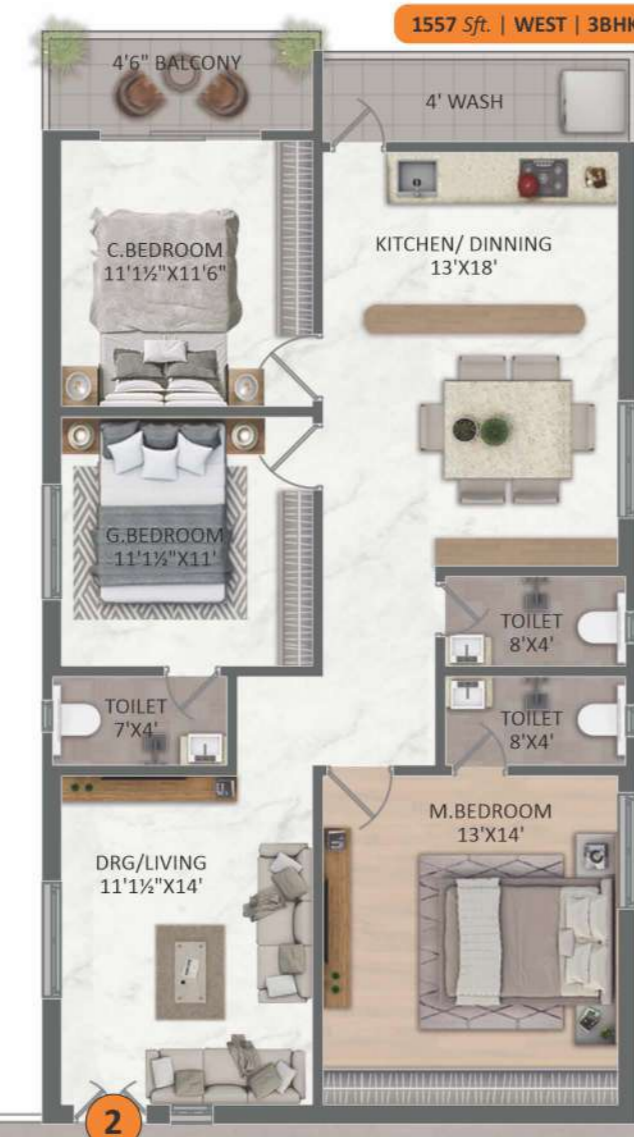
FEATURES

- HMDA APPROVED
- GRAND ENTRANCE
- GATED COMMUNITY
- STILT + 5 FLOORS
- TOTAL 70 NO. OF UNITS
- ALL 3 BHK CONFIGURATIONS
- 100% VAASTU COMPLIANT
- 24 HRS. SECURITY WITH CCTV CAMERAS
- WELL-VENTILATED INDIVIDUAL UNITS
- NO COMMON WALLS
- 100% D.G BACKUP FOR COMMON AREAS
- RAINWATER HARVESTING PITS

AMENITIES

- MULTIPURPOSE HALL
- KIDS POOL
- GYMNASIUM
- CHILDREN PLAY AREA
- INDOOR GAMES
- CC CAMERAS
- 100% POWER BACKUP
- CAR PARKING
- SOLAR FENCING





TYPICAL FLOOR PLAN



LAVISH IDEAL FABULOUS ESTATE

*LIFE

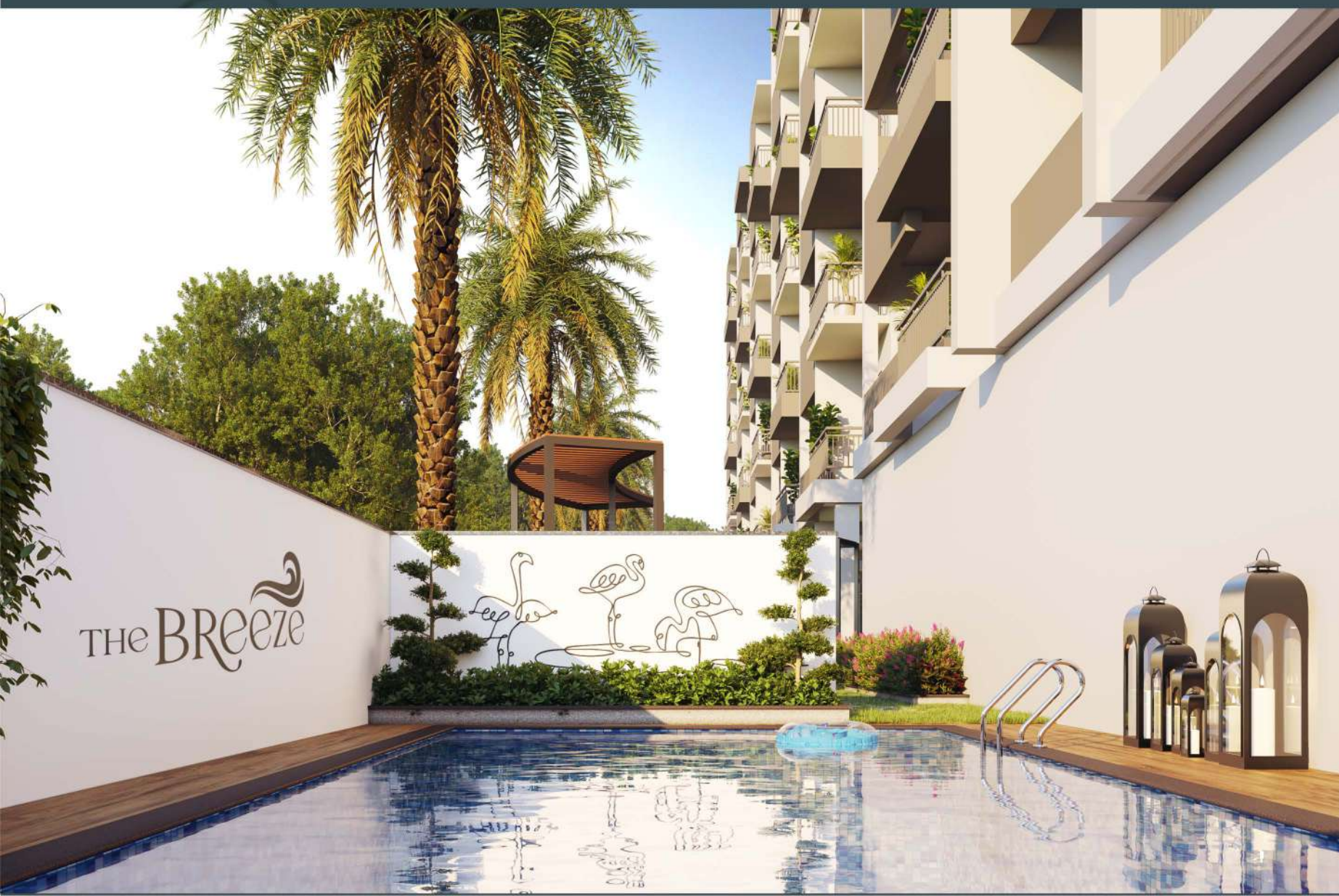


AUTHENTIC TENEMENT

* AT

THE AUTHENTIC EXPERIENCE OF LIVING COMES WITH THE AMENITIES AVAILABLE AT THE RESIDENCE. "THE BREEZE" HOSTS A KID'S POOL, A CHILDREN'S PLAY AREA, GYMNASIUM, INDOOR GAMES, AND MANY MORE ELITE FEATURES IN THE MULTIPURPOSE HALL. OUR MAIN FOCUS IS ON INDIVIDUALITY, WHICH IS WHY "THE BREEZE" DOESN'T HAVE COMMON WALLS. WHILE WE UNDERSTAND THE IMPORTANCE OF COMMUNITY LIVING, WE ALSO VALUE AND PROMOTE SOLITUDE. GET THE BEST OUT OF YOUR HOME BY CHOOSING THIS MAGNIFIQUE NESTING.

THE BREEZE
Lifestyle Apartments @ Manchirevula



FULFILLING IMPECCABLE NOBLE ENCLOSURE

*FINE

THIS CONSTRUCTION IS A SIGHTING TO SEE BECAUSE IT COMES FROM PRECISE PLAN AND ART. THE ARCHITECTURE INVOLVED MANY IDEATIONS AND PHILOSOPHIES OF AESTHETICS. IT IS IN OUR BELIEF THAT WITH AESTHETIC PLEASURE COMES SERENITY. THE AIM IS TO BRING THAT TRANQUILITY TO THE COMMONER WHO DREAMS TO LIVE A HAUT-MONDE LIFE. WE BRING YOU A 24X7 PROTECTED PALACE JUST FOR YOUR NOBLE AND SECURE LIFE.

THE BREEZE
Lifestyle Apartments @ Manchirevula



HASSLE-FREE OVERT MANEUVARABLE EFFORTLESS



* HOME

THE BREEZE
SITE

Site is located with best connectivity of roads both from Financial District, Kokapet SEZ and Gachibowli.

CONNECTIVITY

- 1.0 km from Narsingi / Manchirevula
- 2.5 km from Narsingi ORR
- 5.0 km from Kokapet
- 6.0 km from TSPA
- 9.0 km from Wipro circle, Gachibowli
- 13 km from Hi-tech City
- 22 km from RGI Airport

SCHOOLS

- 0.4 km - Ladlay School
- 0.5 km - Rishi Public School
- 1.5 km - Future Kids Play area
- 1.5 km - Global Discover School
- 1.5 km - St. Lawrence School
- 2.5 km - Army Public School
- 3.0 km - Glendale Academy School
- 3.0 km - Birla Open Minds Int. School
- 5.0 km - Phoenix Greens School
- 6.0 km - Rockwell Int. School
- 6.0 km - Future Kids Int. School
- 9.0 km - Delhi Public School

HOSPITALS

- 6.0 km - Military Hospital
- 7.0 km - Premier Hospital
- 9.5 km - KIMS Hospital
- 10 km - Continental Hospital
- 12 km - Apollo Hospital (Jubilee Hills)
- 12 km - AIG Hospitals (Gachibowli)



Site Address:

Plot No. 11 & 12, Valmiki Nagar,
Manchirevula (V), Rajendranagar (M),
Rangareddy (D), Hyderabad - 500075.

For More Details :

+91 90590 08900, 63097 22424
www.svnrconstructions.com

Architects



SAHASRAA ASSOCIATES
Engineers, Architects & Interior Designers
Ph: 9966889997, 9000549997, Hyderabad.

3D Renders



Ph: 79971 79972, www.visioncraft.in

concept of TRIOCHI 90527 55731

Note: This document has been produced by the developer for advertising and general information only. The developer and its project team do not guarantee, warrant or represent that the information contained within this document is correct. Any interested party should undertake their own enquiries as to the accuracy of this information. The developer excludes unequivocally all inferred and implied terms, conditions and warranties arising out of this document and excludes all liability for loss or damage arising there from. Images shown are Artist Impression and shown for illustrative purposes only. The plans are based on the current design for this development. Changes will undoubtedly be made through development, and dimensions, fittings, finishes and specifications are subject to change without notice. The location of all architectural features on the facade including vertical panel and fins will vary on each type plan and level. Their location on the marketing material is indicative of the design intent. The information contained herein is believed to be current, but is not guaranteed. Prospective purchasers must rely on their own enquiries. Furniture is not included. This document is for guidance and does not constitute an offer of contract.