



BEL PATRA

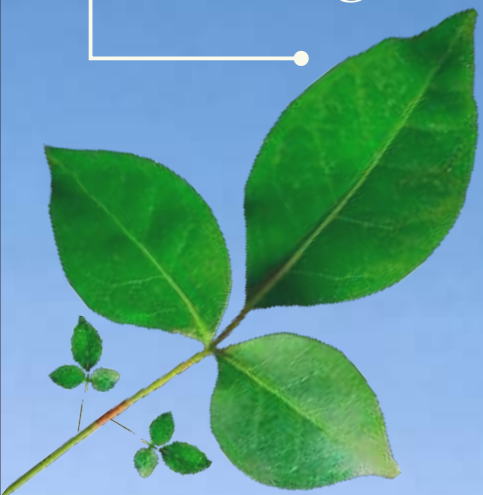
A Project By



Commercial cum Residential

High-Rise Fully Ventilated Building of

G+10 Upper Story



Basement Floor Plan



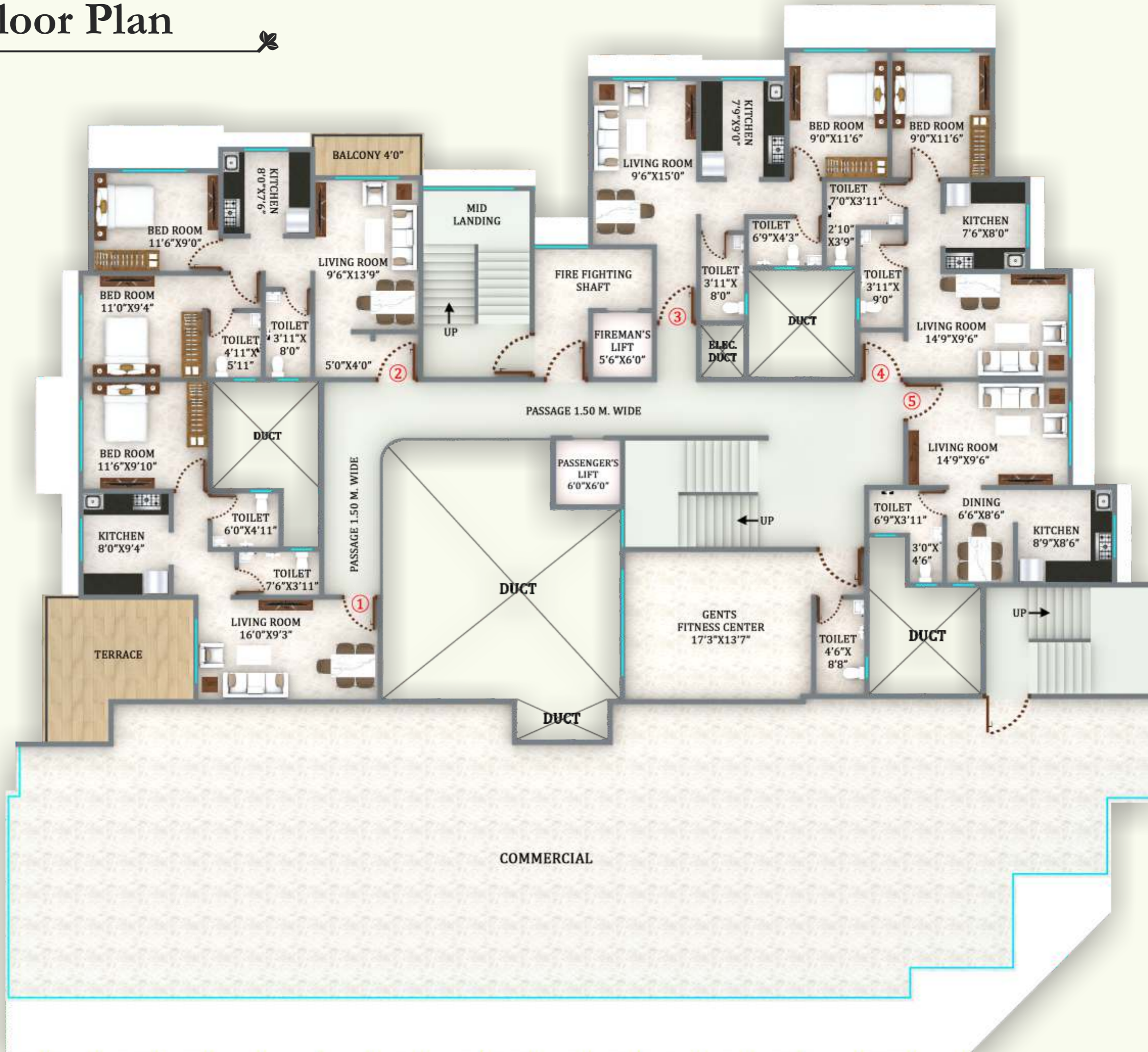
Ground Floor Plan



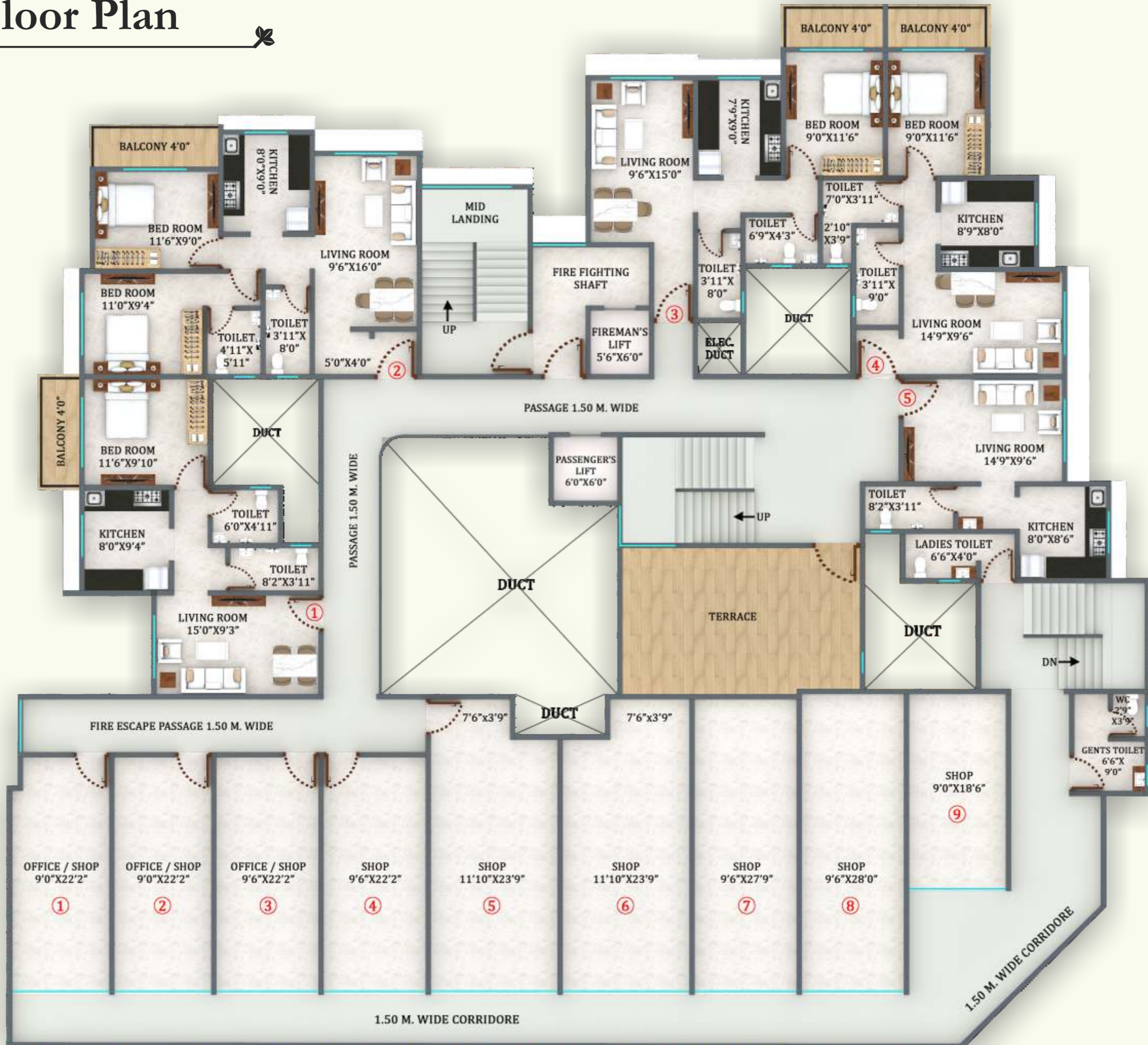
24.00 MT. WIDE PROPOSED



1st Floor Plan



2nd Floor Plan



3rd Floor Plan

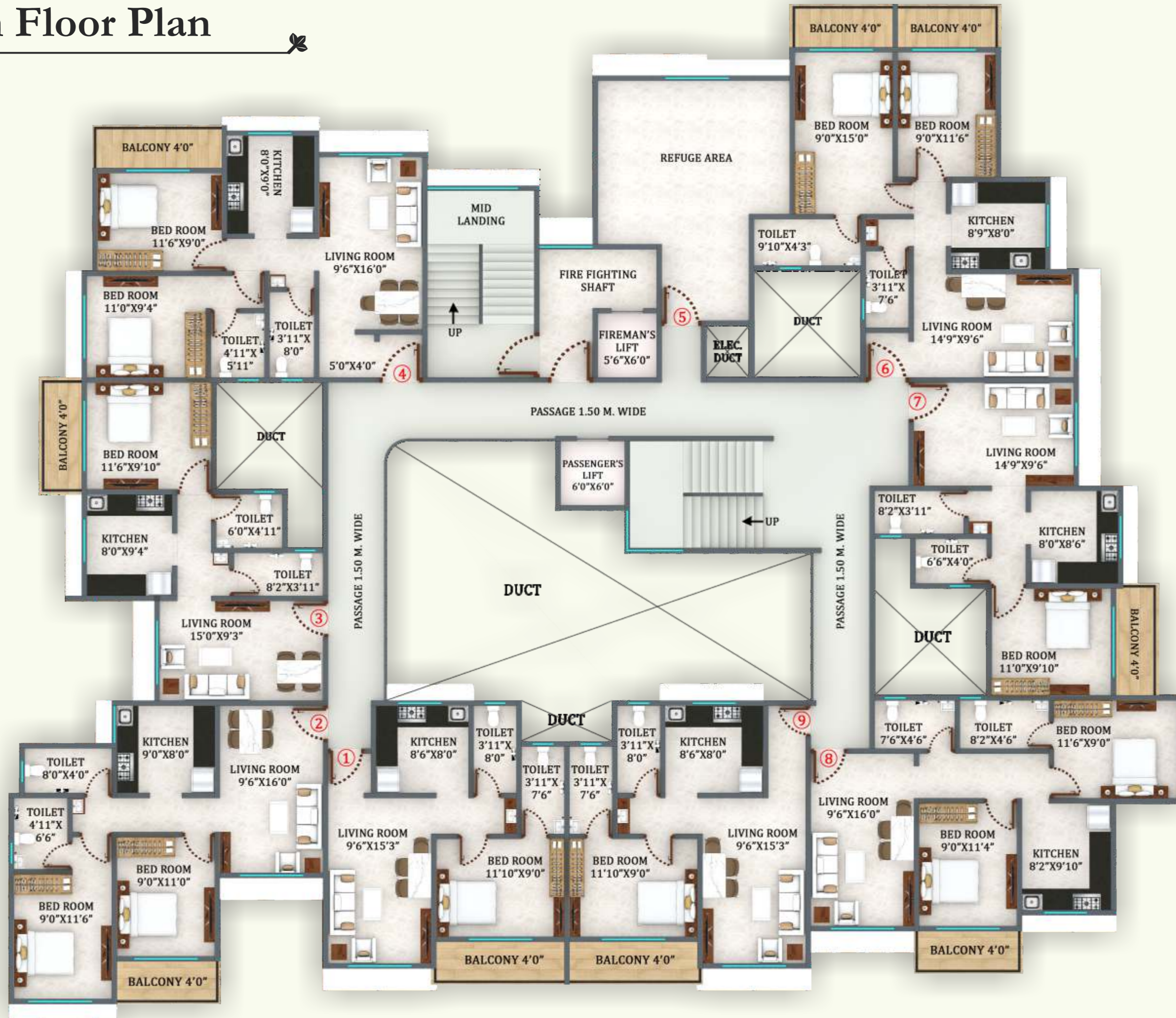


Typical Floor Plan

4th, 5th, 6th, 7th, 9th & 10th



8th Floor Plan



Outdoor Apartment Amenities

- ✦ Superior quality construction with fine Elevations.
- ✦ Apartment secured with compound wall with elegant Entrance main gate. Security guard cabin.
- ✦ Decorative Entrance Lobby on ground floor.
- ✦ Apartment with 2 no. of lift of standard elevator company.
- ✦ Kids indoor play area on ground floor.
- ✦ Fitness Center for gents and ladies.
- ✦ Inverter battery Power back up in common lobby.

- ✦ Outsiders' driver room.
- ✦ Covered parking at basement level.
- ✦ Stilt and parking on ground floor.
- ✦ CCTV Surveillance camera at common places.
- ✦ Building with Fire frightening system.
- ✦ Staircase of ground floor to 1st floor steps are finish with granite and hand railing with stainless steel.
- ✦ 1st floor to terrace level steps are finish with Tandoor tile and hand railing with M.S. pipe/grill.





BELPATRA

FACEWART BLOOM LUCKY OUTFIT BLUE OIL WOM STORE HIDE INK SAU RAM ZOOM
THE STYLISH PRECKAS HANGU RAJ MOBILE+ SPYAR CANTINA CAMBRIDGE HARI OM AIM SYNEX

Location Map



Site Address: Bapgaon Naka, Opp. Bapgaon Police Station, Nr. Gandhari Road, Kalyan (W), Thane - 421 301.

Office Address: 4/A, 1st Floor, Rambaug - Lane No.2, Kalyan (W), Thane - 421 301.

Contact: [Redacted] | **E-mail:** [Redacted]

 **Architect**
GEO Associates

 **Legal Advisor**
Adv. Krunal Adhikari

 **MAHA RERA NO.:**

Disclaimer : .This is not a legal document. it describes the conceptual plan to convey the intent and purpose of project. The images are imaginary. the specification and details mentioned in this brochure are tentative and are subject to change at the sole discretion of the developer or the architect.