



Live your Luxurious Life
with Location



* Artistic Impression

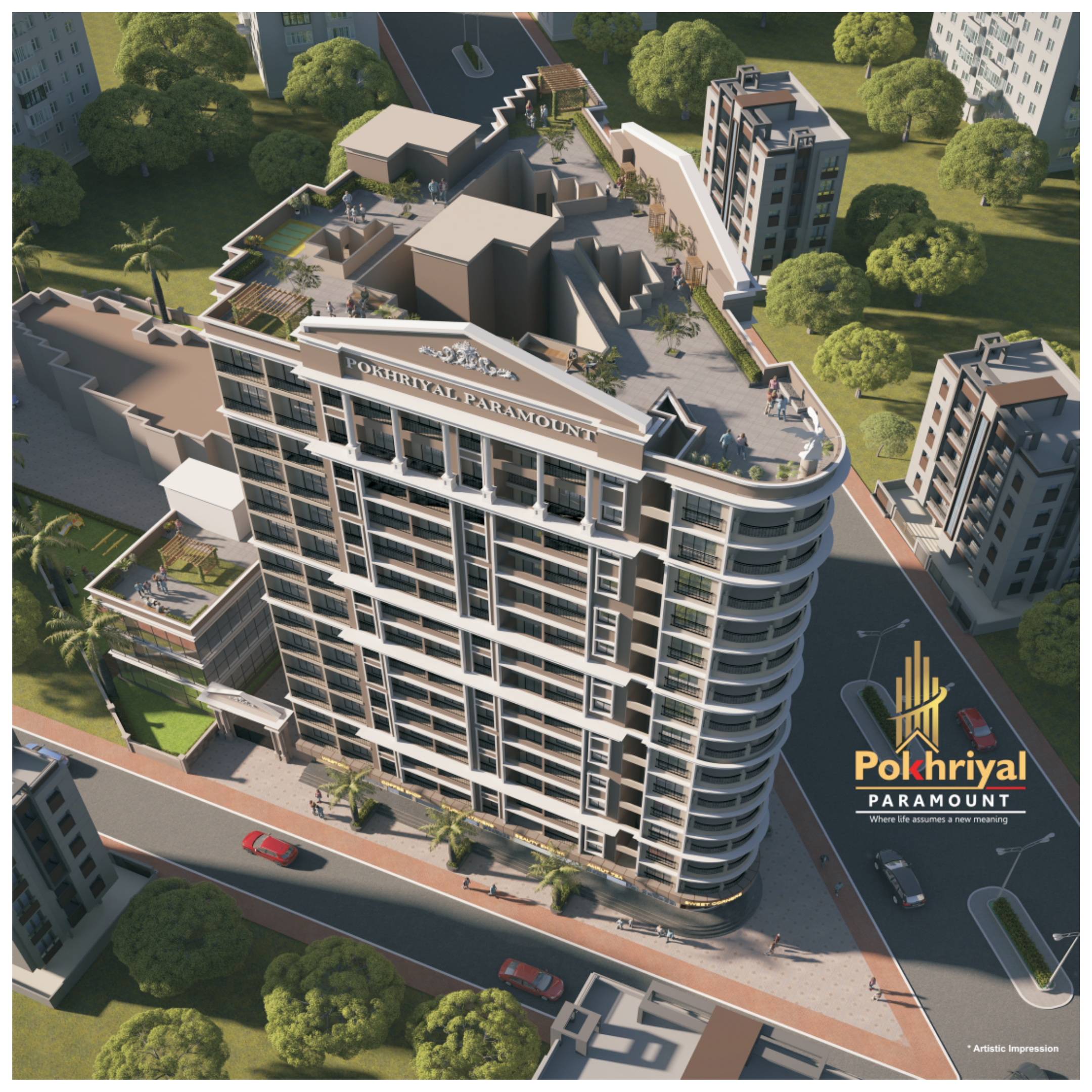


“Luxury Living,
Unparalleled Comfort.”

Pokhriyal and Associates have made their mark in Real Estate Development and Construction in Badlapur with their focused approach and customer centric deliverables for more than a decade.

They are supported by an able team of engineers, architects, contractors, construction professionals, consultant and affiliates who are responsible for continuously innovating and developing milestones of distinction.

Launching of the flagship Pokhriyal Paramount is yet another important milestone in the relentless journey on the path to excellence.



POKHRIYAL PARAMOUNT


Pokhriyal
PARAMOUNT
Where life assumes a new meaning

* Artistic Impression

Your Ideal Residence





The Ultimate Address of Luxury

From enormous themed landscapes, lavish amenities, to luxurious apartments in tower that kiss the skies, Pokhriyal Paramount offers the perfect blend of connectivity to all parts of the city, great views of the city's skyline, abundant green spaces, and a lot of charm.



* Artistic Impression

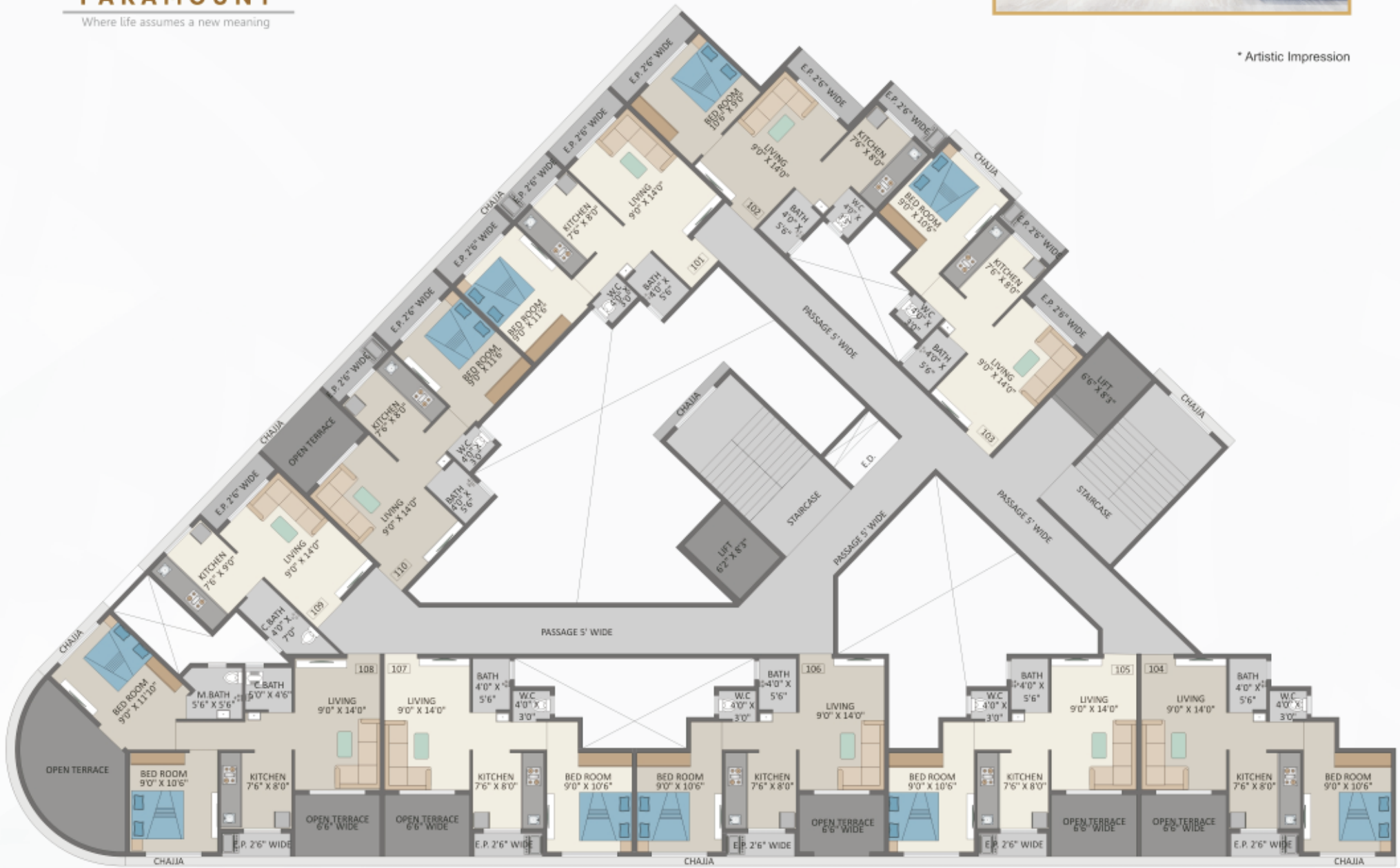


C WING - GROUND FLOOR PLAN



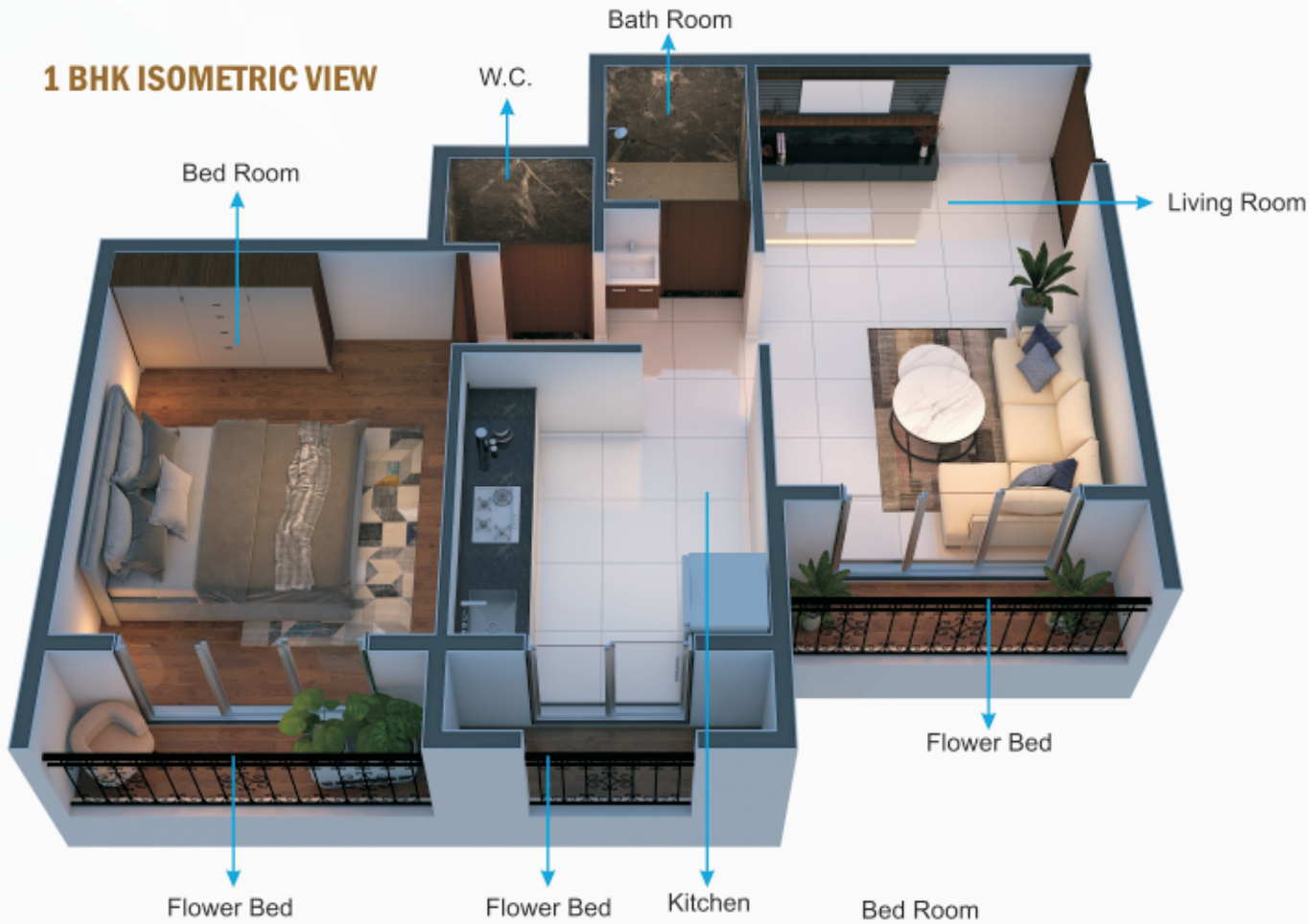


* Artistic Impression



C WING - 1ST FLOOR PLAN

1 BHK ISOMETRIC VIEW

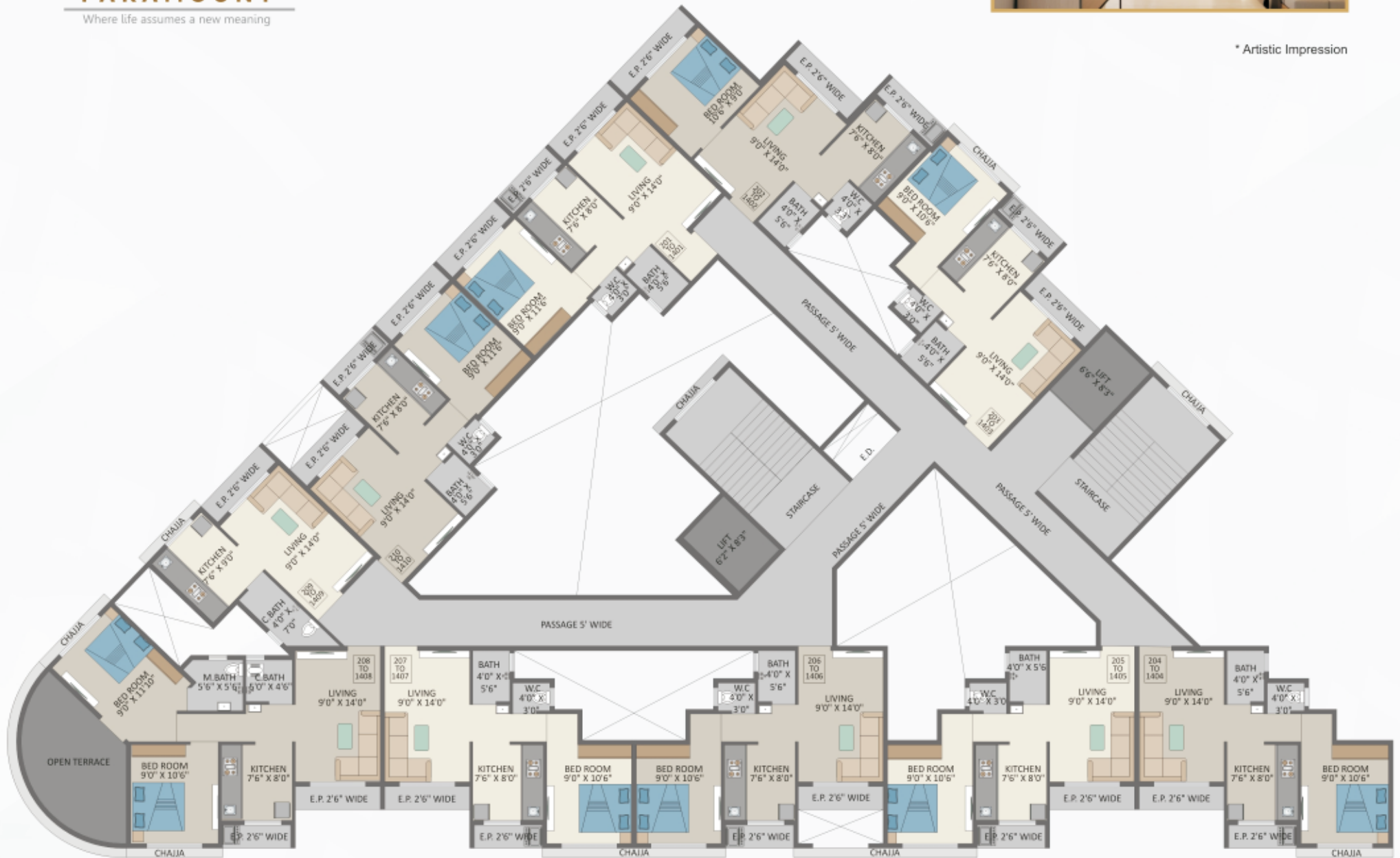


2 BHK ISOMETRIC VIEW

* Artistic Impression



* Artistic Impression



C WING - TYPICAL FLOOR PLAN
2ND TO 7TH & 9TH TO 12TH, 14TH FLOOR



SPECIFICATIONS

Structure

- › Entire RCC Construction Done With FE-500 Tor Steel For Enhanced Durability & Life Span Of Structure
- › Earthquake Resistant Structure

Living & Bedrooms

- › Vitrified Flooring In All Rooms
- › Gypsum Finished Walls With Paint

Kitchen

- › Granite Kitchen Platform With S. S. Sink
- › Designer Tiles Dado Above Kitchen Platform
- › Electric And Plumbing Connection For Exhaust Fan & Aquagaurd

Bath/WC

- › Concealed Plumbing With Good Quality Sanitary Fittings
- › One Wash Basin
- › Providing Water Tank
- › Plumbing Connection For Geyser & Water Tank
- › Antiskid Tiles Flooring
- › Adequate Ventilation

Doors

- › Main Door With Decorative Lamination Finish and Wooden Door Frame
- › Decorative Door Fittings
- › Marble Frames Door Of Bath & WC

Windows

- › Powder Coated Aluminum Sliding French Windows
- › Marble Frame For Windows

Electrical

- › Concealed copper Wiring with Standard Modular Switches
- › Adequate No's Of Electrical Points
- › TV Cable Point In Living
- › Inverter Connection Point

Project Features

- › Cement Plaster On External Walls With Good Quality Paint
- › Internal Walls Gypsum Finish With Paint
- › Compound Wall & Gate
- › Ample Tree Plantation

PROJECT HIGHLIGHTS



CLUB HOUSE WITH GYMNASIUM



COMMUNITY HALL



CAR PARKING



INDOOR GAMES



COMMERCIAL MARKET AVAILABLE



DECORATIVE ENTRANCE LOBBY



SOCIETY OFFICE



KIDS PLAY AREA



24*7 SECURITY



GAZEBO



ROOFTOP GARDEN WITH SITTING AREA



SUFFICIENT WATER SUPPLY

* Artistic Impression



Navi Mumbai Airport : Drive 25 Mints



Our Landmark

A World within striking distance of
Key Destinations
and Major Transit Junctions

Schools



Colleges



Hospitals



Banks



Shopping



Sports



Entertainment

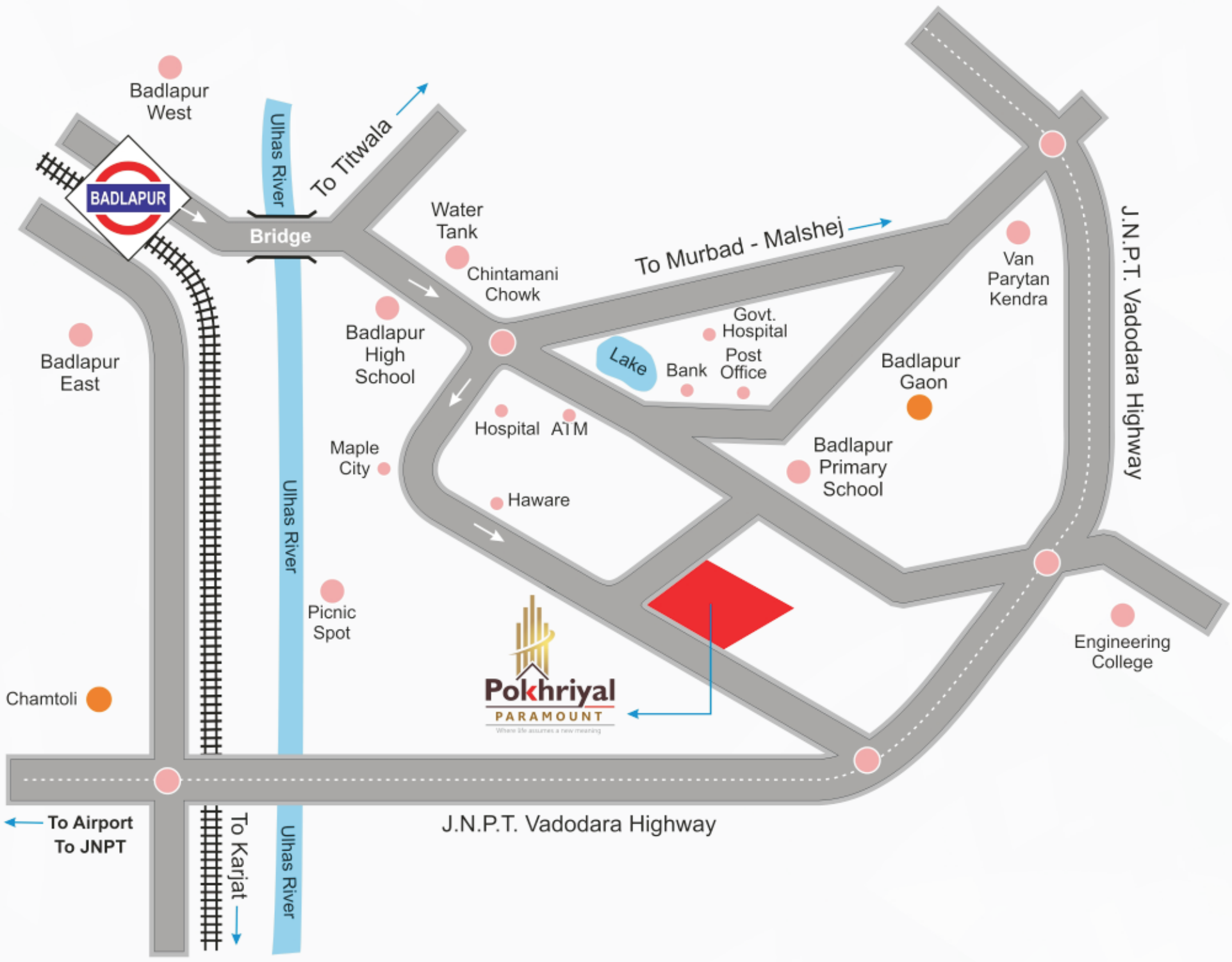


J.N.P.T. Vadodara Highway



Badlapur : Home Platform







Strategic Partner



Project Approved By



MahaRera Regd.No
P51700053054

Site & Office Add.: S. No. 127, Right to Chintamani Chowk, Next to Haware, Badlapurgaon, Badlapur (W) 421 503.

Architect
Raj & Associates
Badlapur

Design By
Studio Archiculture
Badlapur

RCC Consultant
Designage Consultant Pvt. Ltd.
Pune

Legal Advisor
Adv. Vilas C. Dole
Kalyan

Disclaimer : All the images, pictorials, visuals, elevations, perspectives, illustrations, specifications, plans, designs, drawings, dimensions and their information / details herein are conceptual, indicative and for representation purpose only. Developers terms & Conditions apply.
The project Pokhriyal Paramount has been registered with MahaRera under registration no. P51700053054 and is available on website - <https://maharera.it.mahaonline.gov.in> under registered projects.