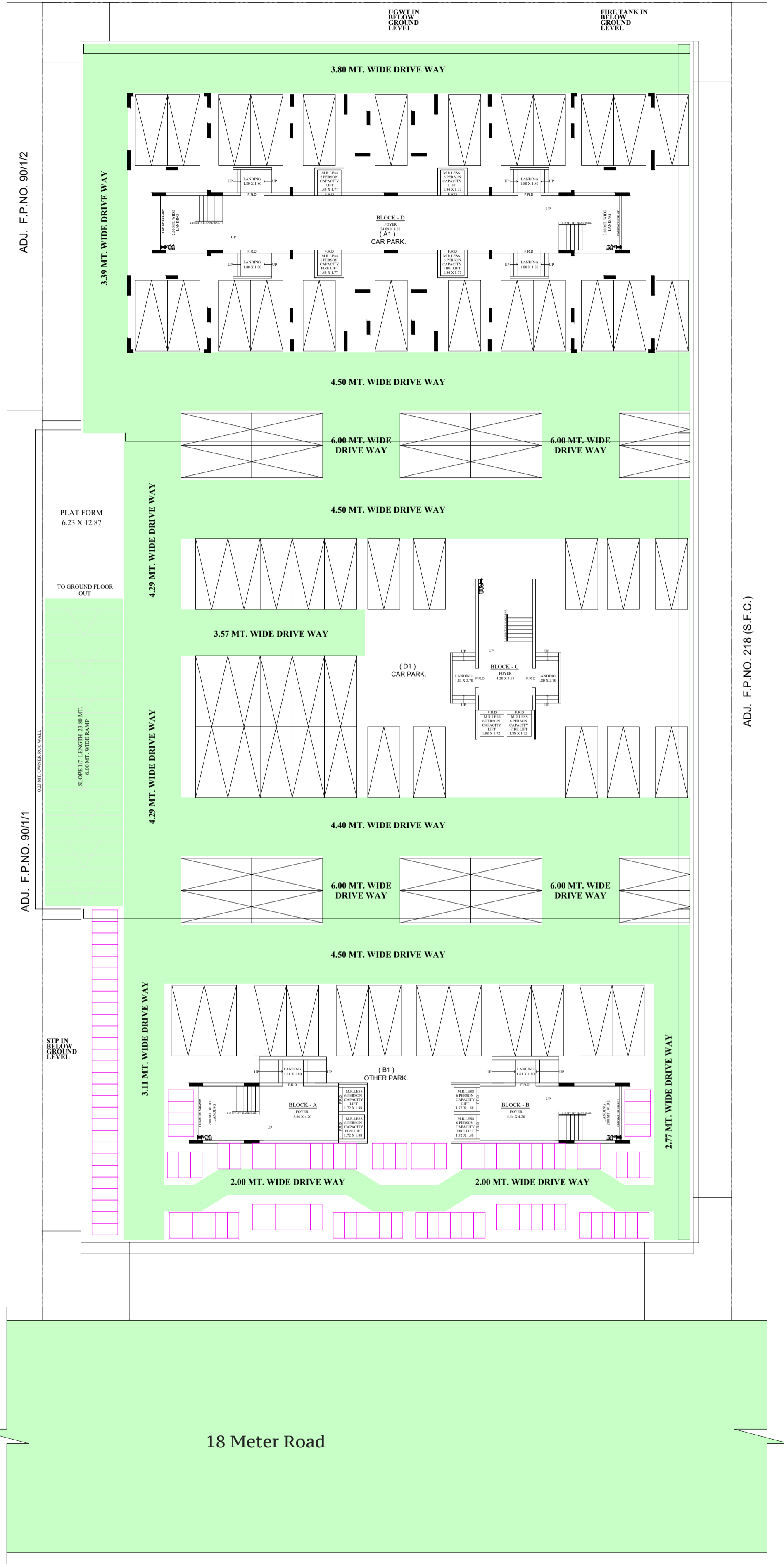




RADHE
GREENS

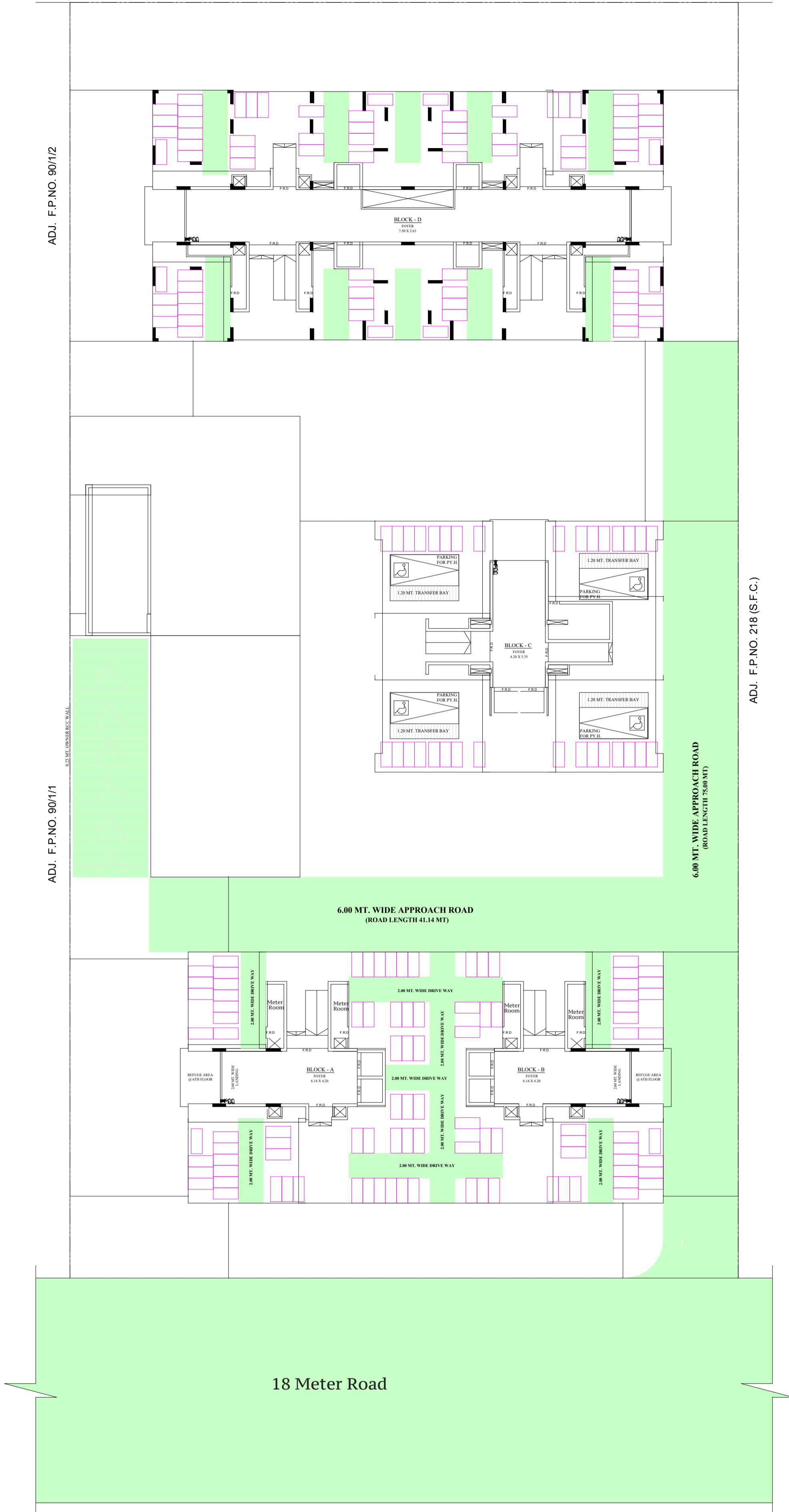


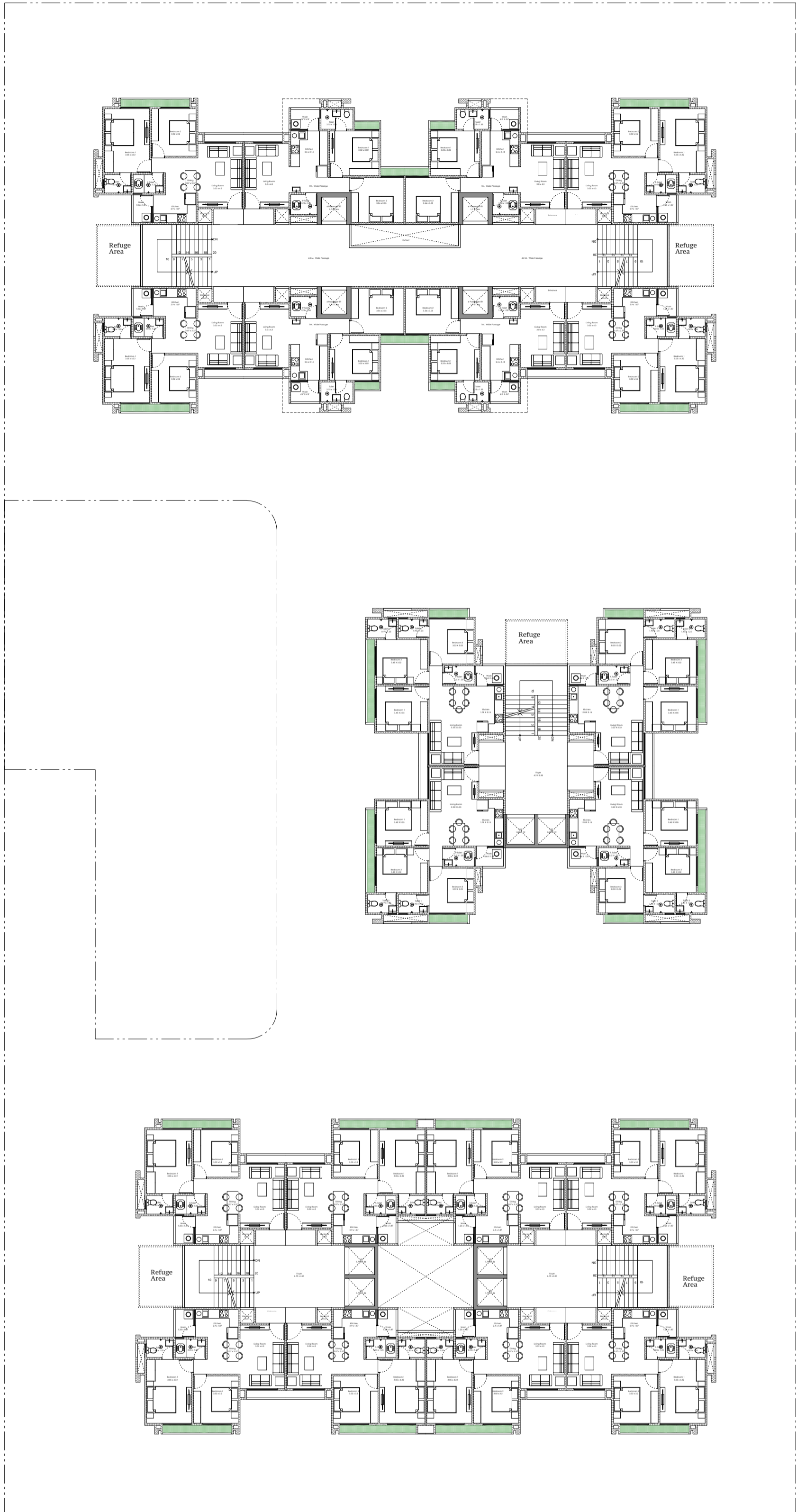


ADJ. F.P.NO. 90/1/2

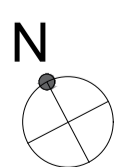
ADJ. F.P.NO. 90/1/1

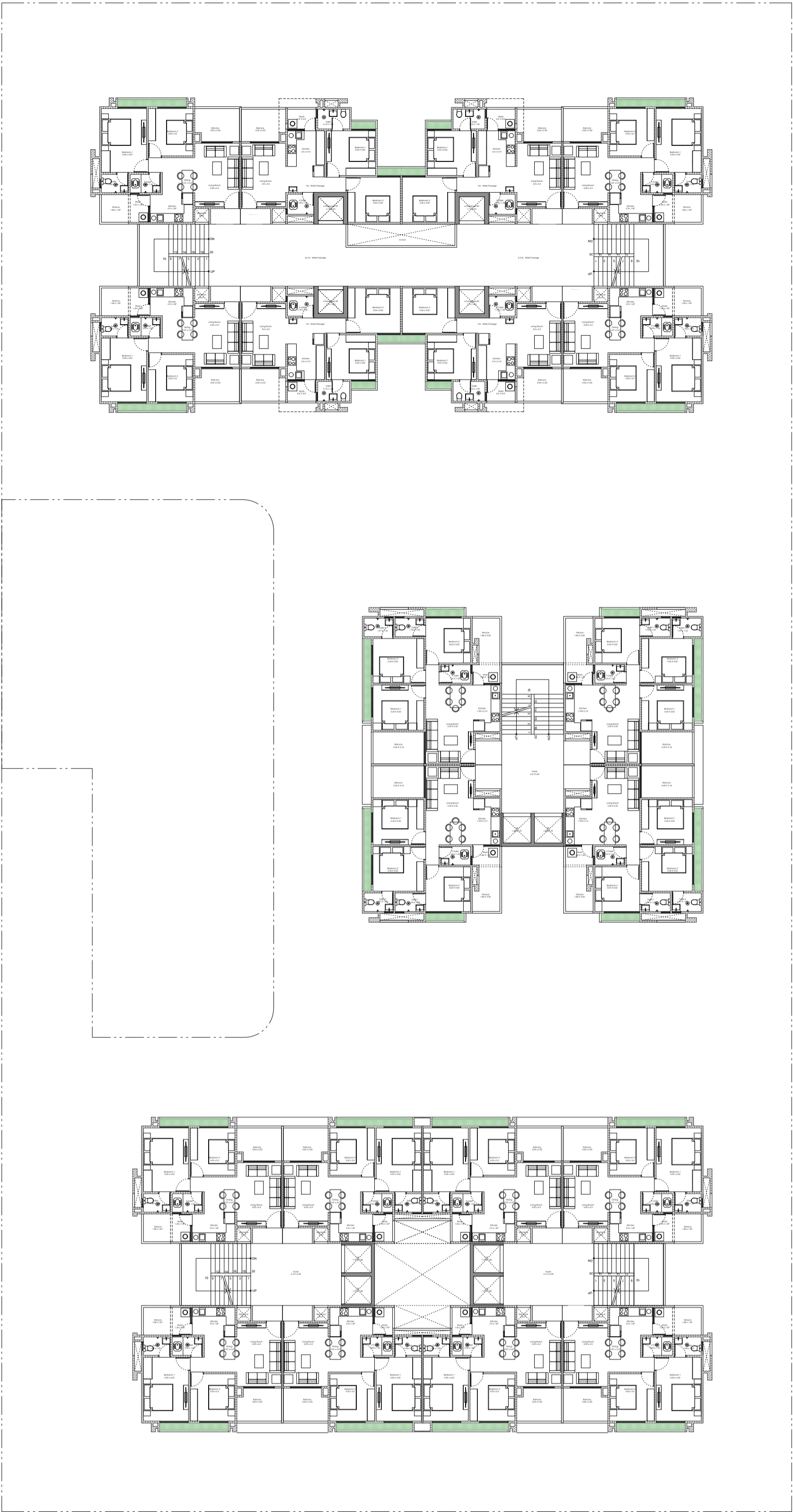
ADJ. F.P.NO. 218 (S.F.C.)



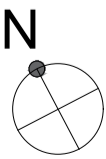


18m Main Road





18m Main Road



SPECIFICATION

STRUCTURE

- R.C.C. Moment frame structure, seismically resistant adhering to IS-CODE guidelines.

FLOORING

- Vitrified tiles flooring.

KITCHEN

- Granite platform with Stainless Steel sink.
- Glazed tiles dado up to lintel level.
- Provision for R. O. point with required electrical & plumbing point.

BATHROOMS/TOILET

- Anti-skid flooring.
- Glazed tiles dado up to lintel level.
- Quality Bathroom accessories and fittings.

DOORS & WINDOWS

- Laminated flush doors with MS frame.
- Premium quality aluminium section.

WASH AREA

- Anti-skid flooring.
- Provision for washing machine fittings with electrical and plumbing point.

MECHANICAL ELECTRICAL & PLUMBING

- Concealed copper wiring with M.C.B / E.L.C.B.
- Plenty of electrical sockets with quality switches.
- Quality U.P.V.C. pipes for regular water supply.
- Quality C.P.V.C. pipes for hot water supply.
- Quality P.V.C pipe for drain.

TERRACE

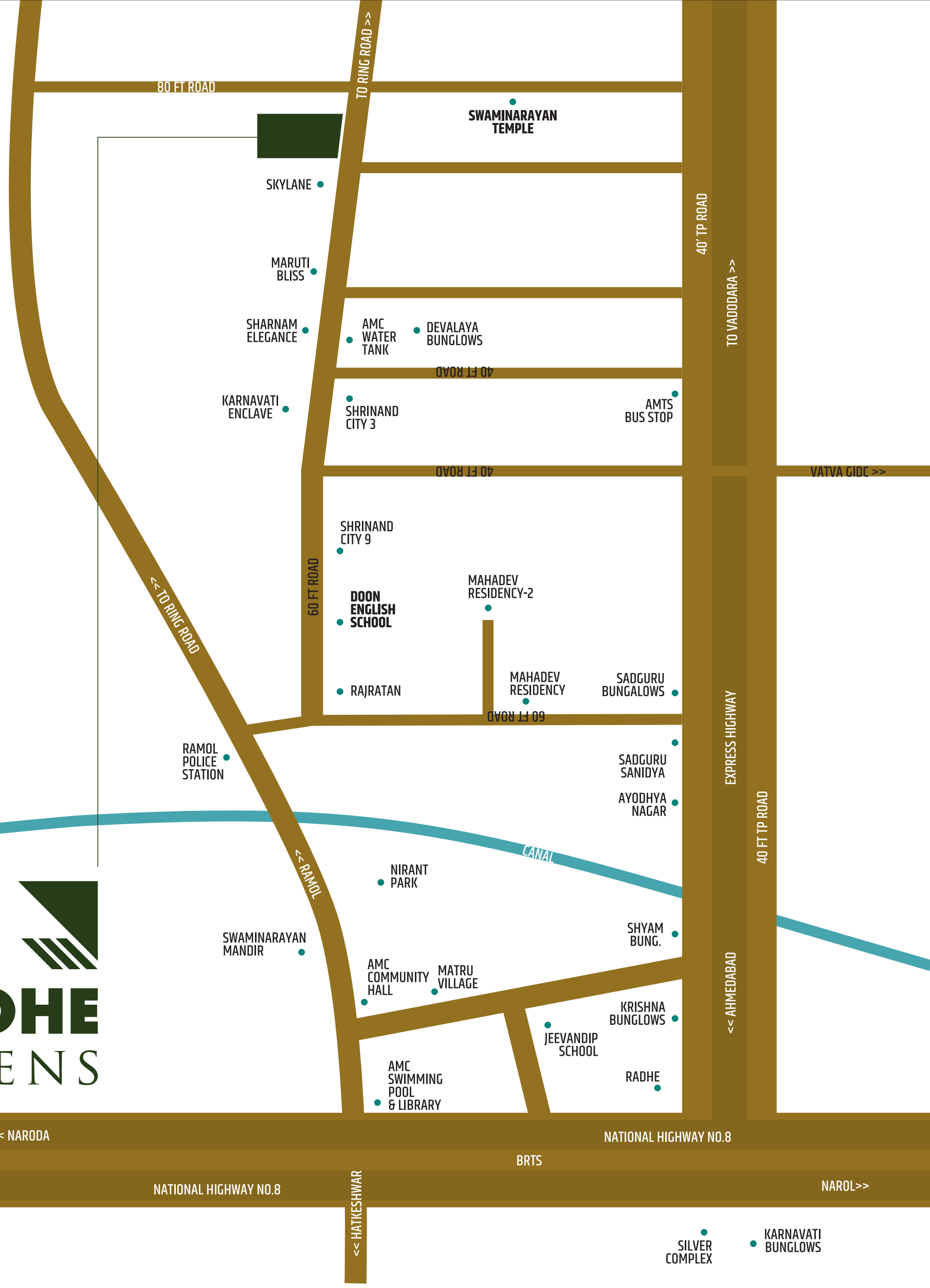
- Open terrace with leak proof floor.

PLASTER & PAINTS

- Inside : Single coat mala plaster with wall putty finish.
- Outside : Double coat mala plaster with texture or exterior paint for attractive elevation.



RADHE GREENS



RADHE GREENS, RAMOL, AHMEDABAD

☎ 99790 03737

✉ nanddevelopers111@gmail.com

DEVELOPED BY

NAND DEVELOPERS

ARCHITECT

AVESH GHANCHI

STRUCTURE

SPACTAL

RERA REGISTER NO.

RERA WEBSITE : WWW.GUJRERA.GUJARAT.GOV.IN