



CONSTRUCTING EXCELLENCE
THROUGH EXQUISITE CRAFTSMANSHIP



“THE ROLE OF AN ARTIST IS
TO TAKE WHATEVER THEY BELIEVE IN
AND PUT IT OUT THERE.”

- DAVID LE BATARD



From the Chairman's Desk

In the decades since its inception, GM Infinite has built an array of structures, from premium residential properties to hospitals, government complexes and international schools. Our pride, however, lies in something else that we've built along the way – our reputation. One that assures each partner and every customer of staunch professionalism, integrity and the finest expertise.

Expertise has been the hallmark of the company since 1962, when Mr. Gulam Rasul, my father, founded GM Infinite as a construction company. In my years with the company, my team and I have expanded the portfolio to include real estate development and contracting, but the company's foundation of expertise and commitment has remained unchanged.

Our work can be viewed in Bangalore, India's IT city, Chennai and Tier II cities across Karnataka. The rapid growth of Bangalore's IT and service industries has triggered a staggering demand for real estate developments and infrastructure.

GM Infinite has been a part of this changing landscape, with residential projects that cater to a cross-section of customers. We have also partnered with builders on various developments, offering them a wide and specialized set of skills.

GM Infinite is now looking beyond horizons and borders, and expanding its footprint internationally. As we move forward, we take note of the past. This book chronicles the trajectory of the company, and the principles that charted it. For it's only by building on the past, that one can scale heights in the future.

Gulam Mustafa

Chairman & Managing Director,
GM Infinite Group, India.



Artist's Impression



Artist's Impression



“THE GREATNESS OF ART IS NOT TO FIND
WHAT IS COMMON BUT WHAT IS UNIQUE.”

- ISAAC BASHEVIS SINGER



Having ruled the Bengaluru real estate market for more than four decades, we have ventured into developments like SEZs, Commercial projects, and many more. With each new creation of ours, we keep excelling by fulfilling all our promises by creating exquisite masterpieces.

“WE ARE WHAT WE REPEATEDLY DO.
EXCELLENCE, THEN, IS NOT AN ACT,
BUT A HABIT.”

- ARISTOTLE

What makes a masterpiece? A piece of art doesn't magically turn into a masterpiece, it happens when years of practice, skills, and exquisite detailing come together to form a creation that transcends all the boundaries of art and craftsmanship.



Artist's Impression

“A REALLY GREAT TALENT FINDS
ITS HAPPINESS IN EXECUTION.”

- JOHANN WOLFGANG VON GOETHE

The wisdom of experience and the boldness of vision – a synergy of the two is at the heart of every project, we undertake. From the first grain of sand moved to the last stroke of paint applied, GM Infinite aims for and achieves, the highest degree of quality.



GM
LEGEND CITY TECH PARK

GM
LEGEND CITY TECH PARK

“PALATIAL HOMES ARE A CELEBRATION OF
BEAUTY, ARTISTRY, AND CRAFTSMANSHIP,
CREATED WITH THE FINEST MATERIALS
AND EXECUTED WITH THE GREATEST SKILL.”

- WILLIAM NORWICH

After proving our fine and exquisite sense of artistry for more than 40 years and transforming almost 50 million sq. ft. we are now going one step ahead by creating a Victorian wonder to create a world where every element is no less than a piece of exquisite artistry.

Introducing
GM
PALAZZO

BRIGADE ROAD, BENGALURU



Artist's Impression



Artist's Impression

Artist's Impression



Artist's Impression

“ART IS NOT THE POSSESSION OF THE FEW WHO ARE
RECOGNIZED WRITERS, PAINTERS, AND MUSICIANS;
IT IS THE AUTHENTIC EXPRESSION OF ANY AND
ALL INDIVIDUALITY.”

- JOHN DEWEY

When you're a connoisseur, you desire nothing but things and a lifestyle of the finest form which can never be replicated. What if you could experience all of this in Bengaluru, that too at a time when art and its appreciation have become quite uncommon? Be one of the chosen few who can witness this level of finesse and purity.



Stock Image



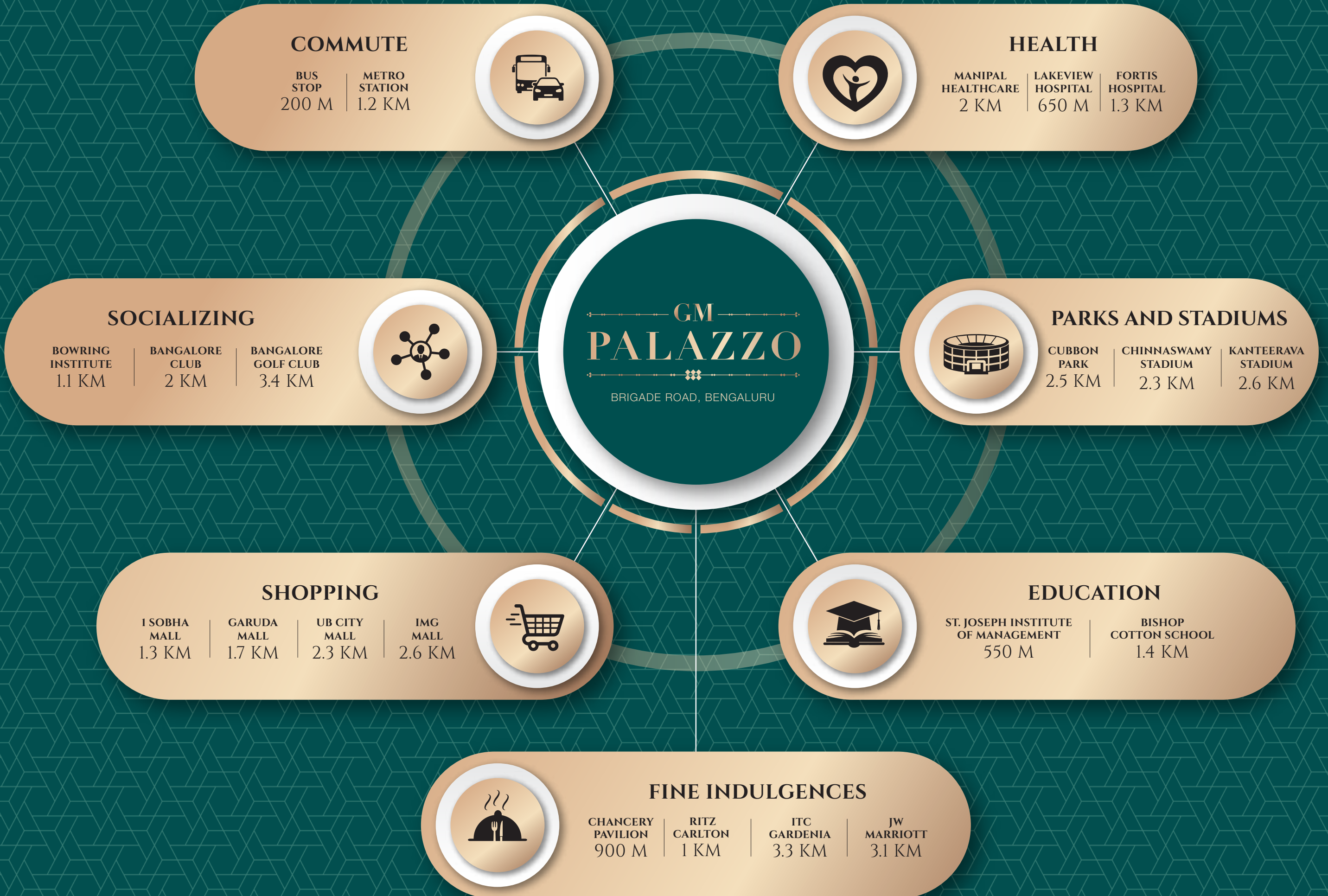
“AS AN ARTIST, THE ENVIRONMENT HAS A LOT OF
IMPACT ON CHOICES, AND THESE CHOICES
CAN CHANGE BY CHANGING YOUR LOCATION.”

- **ASHKAN KOOSHANEJAD**



Brigade Road is an ideal destination for those who enjoy the finer things in life.
It also comes with the privilege of being connected to the most sought-after locations of
Bengaluru such as MG Road, Commercial Street, Lavelle Road, UB City, Cubbon Park, etc.
Proximity to commute hubs, health centers, clubs, parks, and educational institutes
make your life more convenient than ever by helping you save your time
and invest it in the things that bring you peace and happiness.

SURROUNDED BY FINER CHOICES, FOR A FINER LIFESTYLE



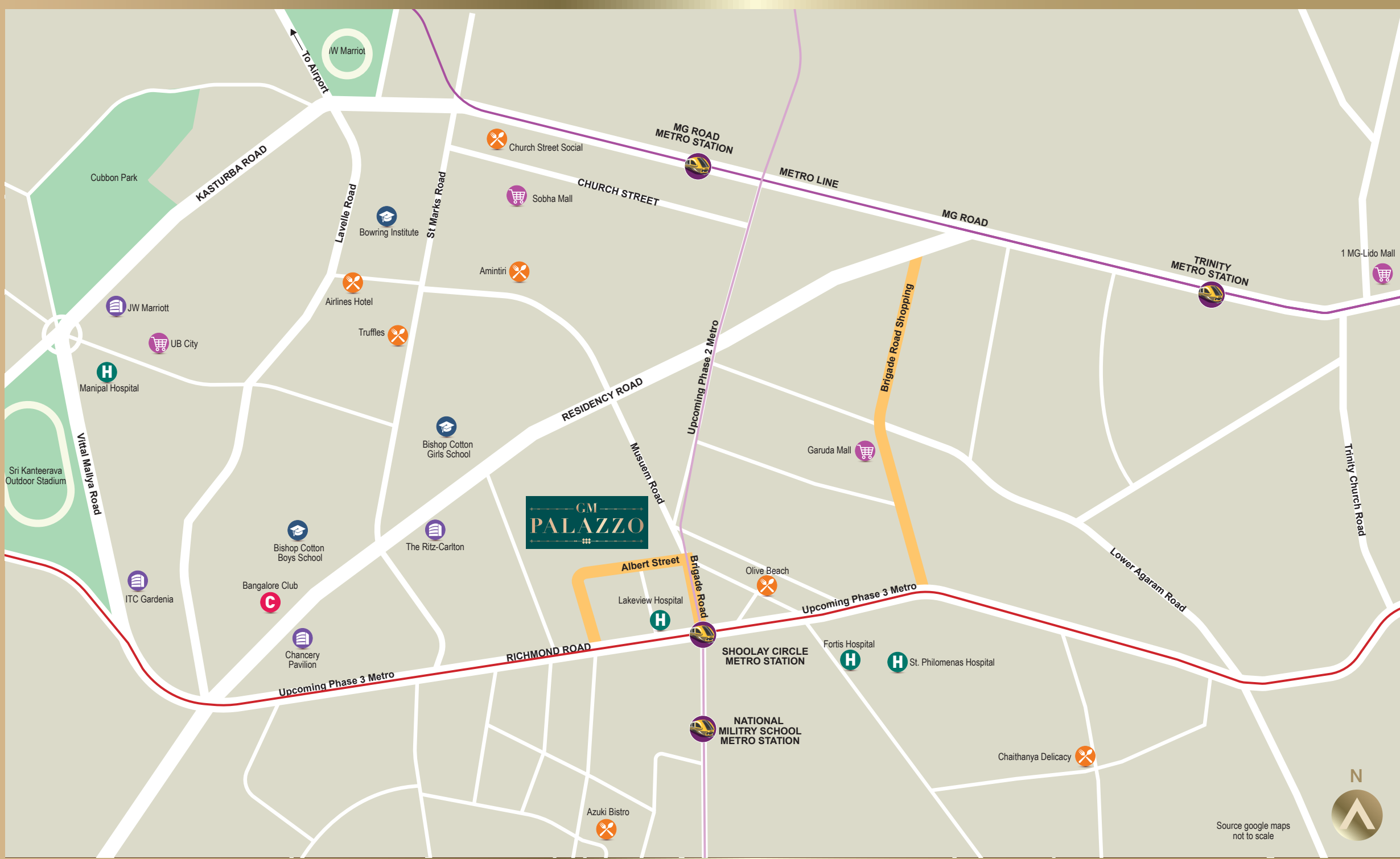


“THE ARTIST’S WORLD IS LIMITLESS. IT CAN BE FOUND ANYWHERE, FAR FROM WHERE HE LIVES OR A FEW FEET AWAY. IT IS ALWAYS ON HIS DOORSTEP.”

- PAUL STRAND



Brigade Road is also connected to other major roads in the city, including Residency Road, St. Mark's Road, and Hosur Road. The Kempegowda International Airport is approximately 35 km away from Brigade Road and can be easily accessed via the Bangalore Metro or private transportation. It is also in close proximity to Lavelle Road and UB City, one of the most happening spots in Bengaluru, to live a life surrounded by the finest things and places curated just for you!





“ART WASHES AWAY FROM THE SOUL
THE DUST OF EVERYDAY LIFE.”

- PABLO PICASSO



Lifestyles get richer with a unique blend of indulgences
and so does your confidence to enjoy your life to the
fullest with rooftop amenities.



BILLIARDS



YOGA COURT



LOUNGE



ROOFTOP SWIMMING POOL WITH DECK



GYMNASIUM



LANDSCAPE TERRACE



STEAM & SAUNA ROOM



“WHEN AN ARTIST USES
PLANNING FOR EXECUTION.
THE IDEA BECOMES A MACHINE
THAT MAKES THE ART.”

- SOL LEWITT







“PALATIAL HOMES ARE
ARCHITECTURAL MASTERPIECES,
BUILT TO INSPIRE AWE AND WONDER
IN ALL WHO SEE THEM.”

- DAVID COLLINS





Tower Plan Ground Floor




“PALATIAL HOMES ARE AN EXPRESSION OF
THE ULTIMATE IN LUXURY, A PLACE WHERE
EVERY COMFORT AND CONVENIENCE
HAS BEEN CONSIDERED AND PROVIDED.”

- CANDACE BUSHNELL





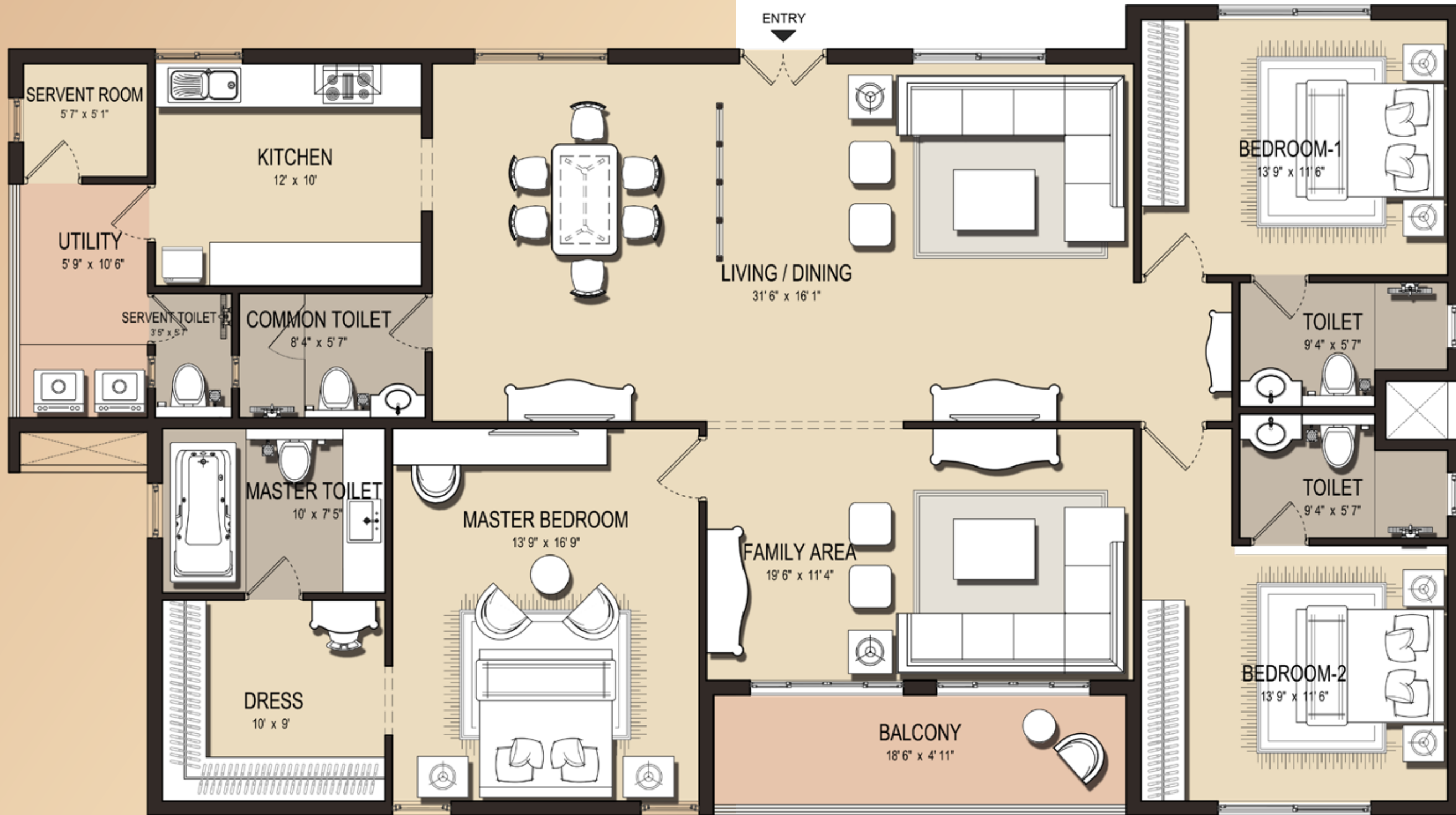
Tower Plan First Floor



“PALATIAL HOMES ARE A REFLECTION OF
THEIR OWNERS’ ASPIRATIONS
AND ACHIEVEMENTS,
A TESTAMENT TO THEIR WEALTH AND STATUS.”


- JAN MORRIS





Unit Plan 01

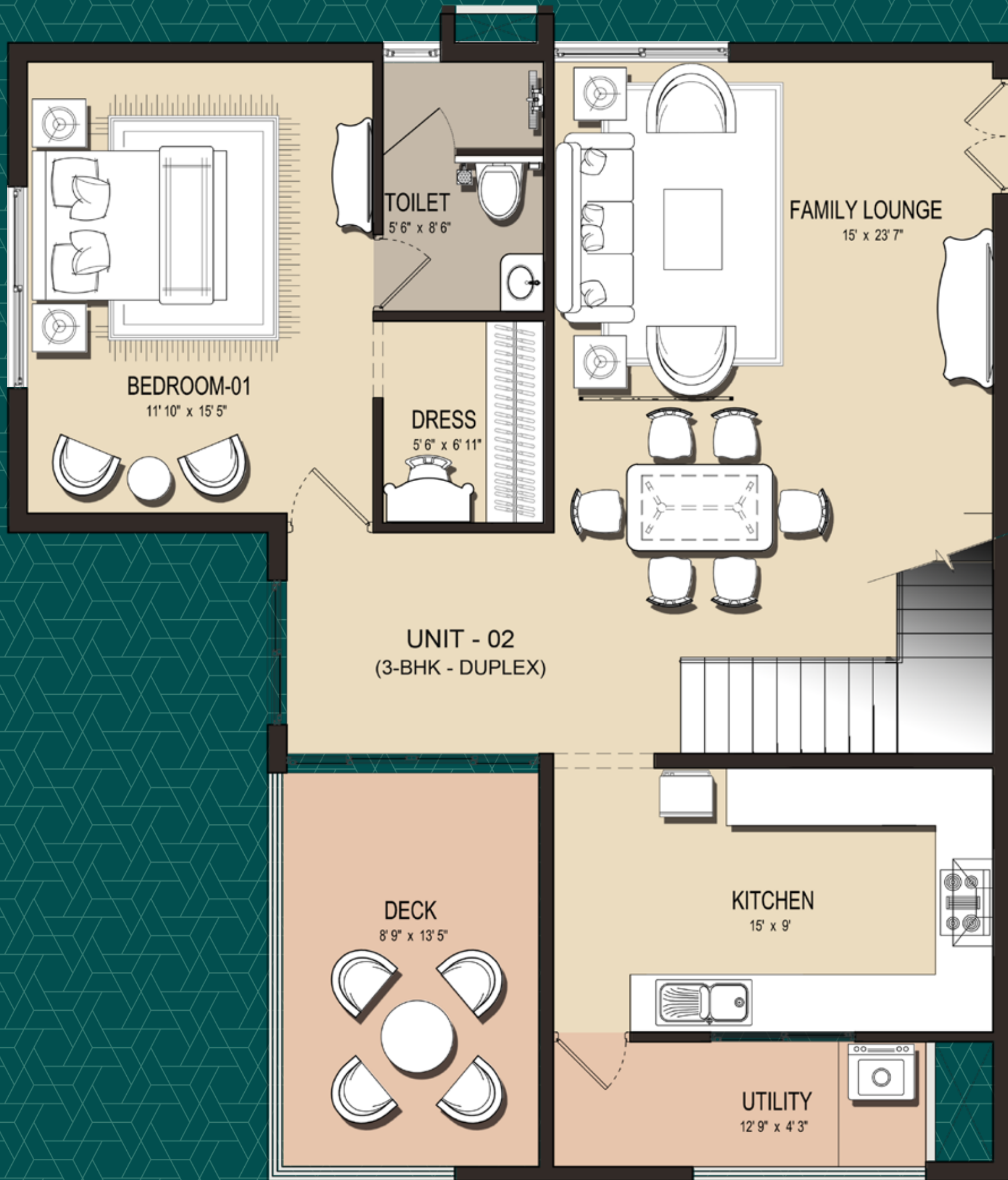
3300 SQ. FT.



"PALATIAL HOMES ARE THE
EMBODIMENT OF THE HUMAN SPIRIT'S
QUEST FOR GREATNESS, CREATED TO
INSPIRE AND UPLIFT THE SOUL."

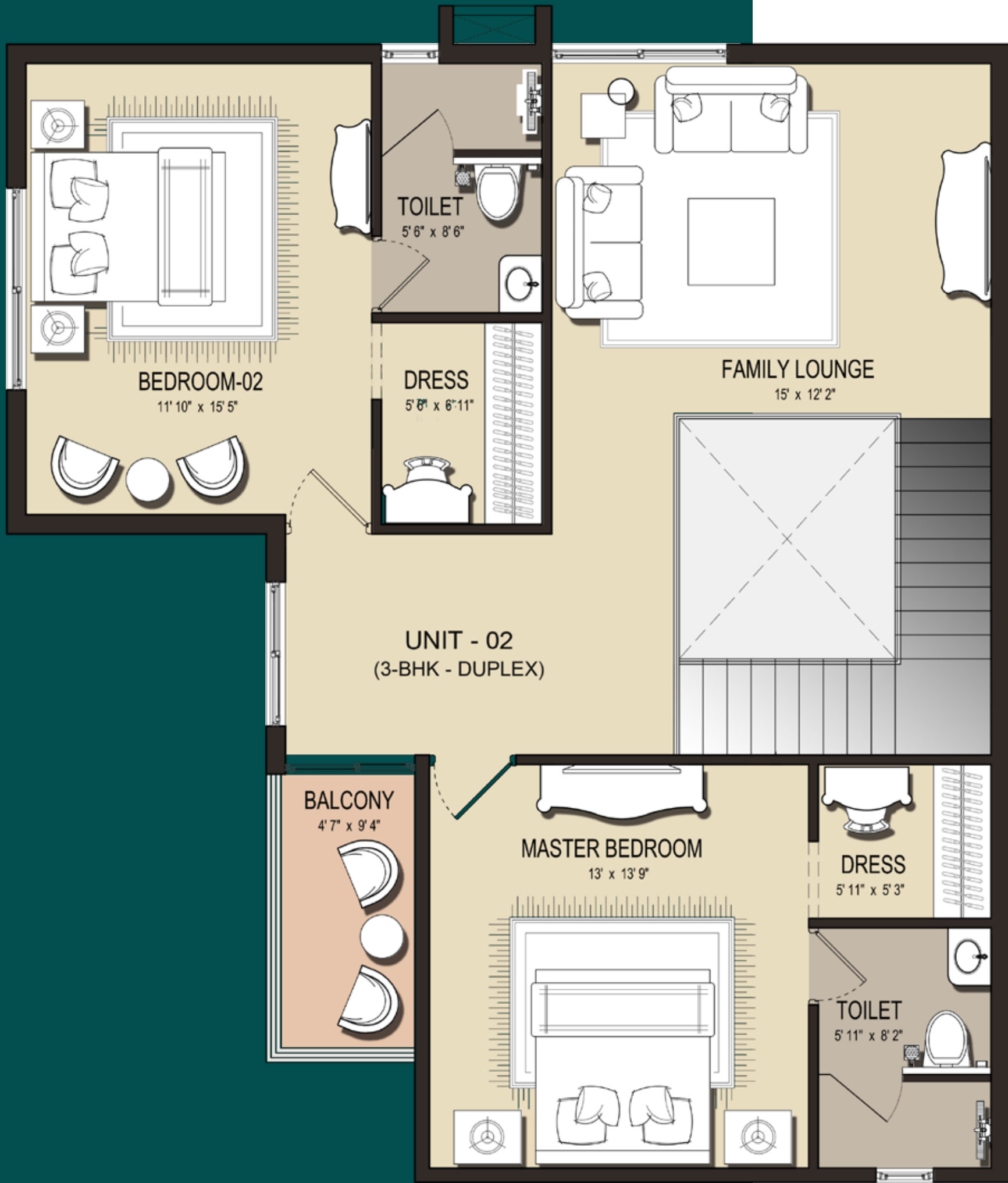
- ROBERT COUTURIER






Unit 02 Duplex Ground Floor

3300 SQ. FT.



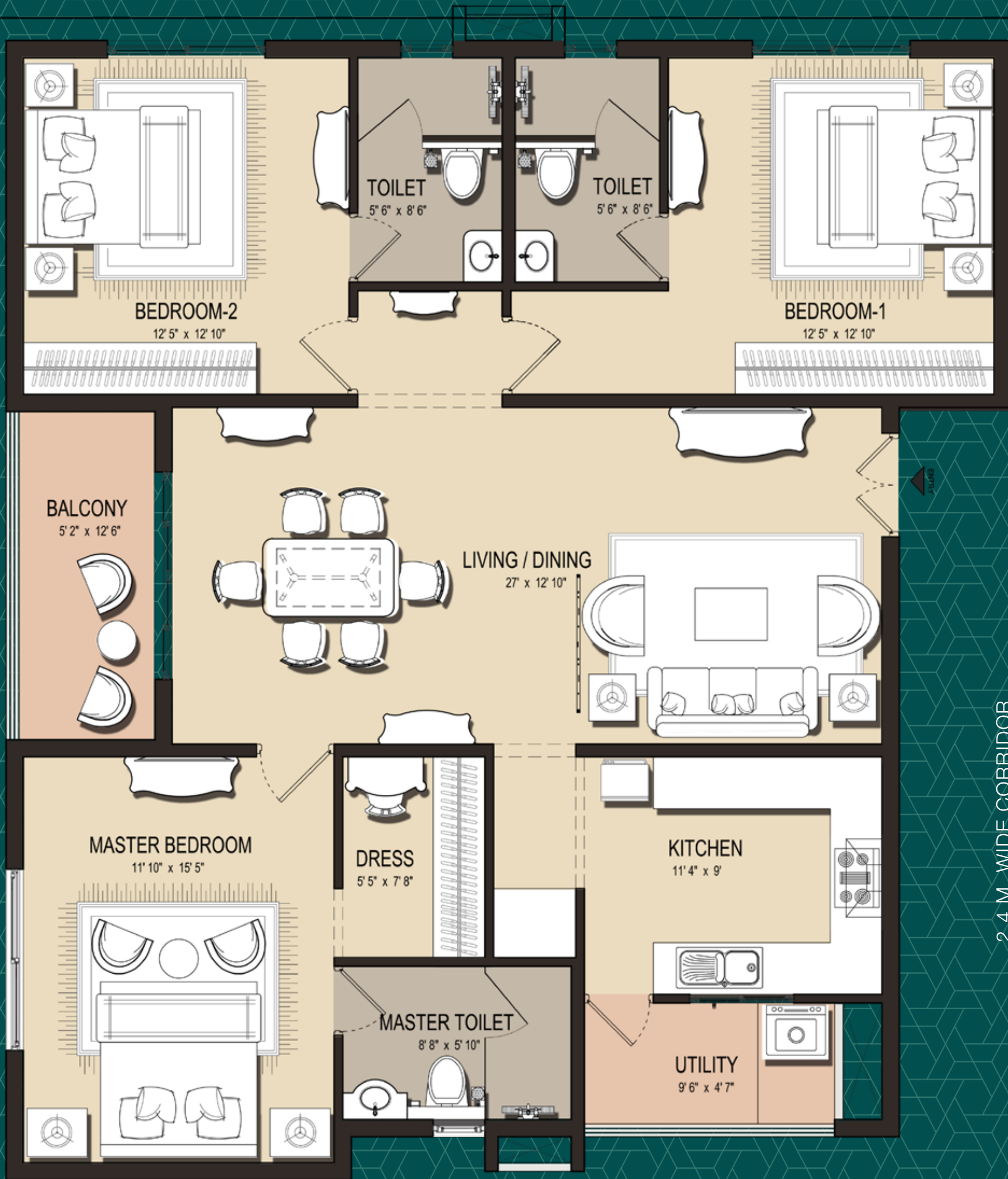
Unit 02 Duplex First Floor



“PALATIAL HOMES ARE THE EMBODIMENT
OF THE HUMAN DESIRE FOR PERFECTION,
CREATED TO BE THE ULTIMATE EXPRESSION
OF ELEGANCE AND REFINEMENT.”

- RACHEL ZOE





2.4 M WIDE CORRIDOR



Unit Plan 03

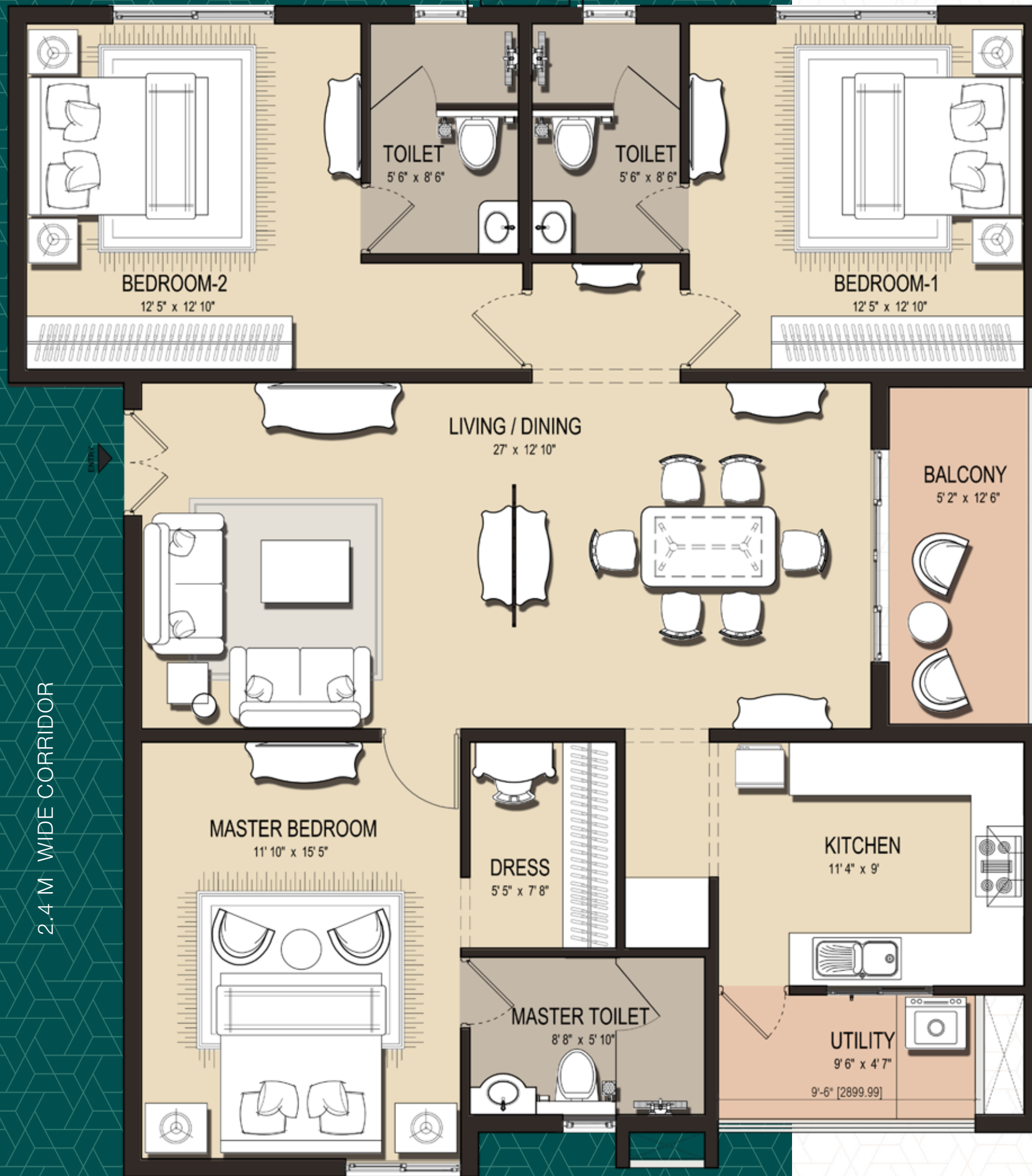
2250 SQ. FT.



“PALATIAL HOMES ARE THE EPITOME OF
ARCHITECTURAL EXCELLENCE, SHOWCASING
THE FINEST TECHNIQUES AND MATERIALS
IN THE WORLD.”

- THOMAS JAYNE





2.4 M WIDE CORRIDOR



Unit Plan 04

2250 SQ. FT.

“THE AIM OF ART IS TO REPRESENT NOT THE OUTWARD APPEARANCE OF THINGS, BUT THEIR INWARD SIGNIFICANCE.”

– ARISTOTLE

STRUCTURE

Seismic Zone 2 compliant RCC framed structure.
Internal & external walls as per the structural requirement.

PLASTERING AND PAINTING

Internal walls with cement plastering.
Internal painting: Internal walls and ceilings with POP and plastic emulsion paint.
External painting: Weatherproof paint with textured finish.

DOORS AND WINDOWS

Main door with hardwood frame and veneer finish on both sides.
Door height 8'.
Bedroom doors - 7' x 3' with hardwood frames with architraves and veneer/laminate flush shutter.
Bathroom & Utility Doors with wood frame, flush shutter finished with laminate on both sides.
Premium quality Schuco/ Domal series Aluminum fixed/sliding/casement windows with clear glass.

FLOORING AND CLADDING

Superior quality imported Italian marble flooring in Living, Dining and Family areas.
Vitrified tiles for kitchen & utility.
Engineered wooden flooring for the Master bedroom.
Bathrooms: High-end anti-skid vitrified tiles.
For Dadoing: High-end designer vitrified tiles.
Kitchen & Balconies: High-end vitrified tiles.
Servant Room & Toilet: Vitrified tiles.
Utility and Utility Dadoing: Vitrified tiles.

COMMON AREA

Imported marble for the entrance foyer of the tower.
Marble / Premium quality Vitrified flooring for typical floors.

LIFT

2-passenger lifts of 10-person capacity, of Mitsubishi/ Toshiba make or equivalent.

KITCHEN

Polished granite slab of 2' width for counter and 2' height ceramic tile dado with stainless steel sink.

Provision for exhaust fan.

Provision for drinking water purifier.

Provision of dishwasher/washing machine in the utility area.

Provision for an additional sink in the utility area.

GENERATOR BACKUP

Power backup provided for all apartments, common areas and services. (Except 15 amps power sockets)

BATHROOM FITTINGS & ACCESSORIES

Imported sanitary ware and CP fittings from Kohler/Grohe or equivalent.

Geberit concealed flush tanks in all bathrooms.

Conventional geyser provision in all bathrooms.

Rainshower fittings in the bathroom(s).

Wash basin with granite counters.

Servant Toilet: Wash basin and WC with geyser provision.

ELECTRICAL

Electrical modular switches of Legrand make or equivalent.

Fire-resistant electrical wires of reputed make.

One earth leakage circuit breaker for each apartment.

Sufficient power outlets with concealed wiring, PVC insulated copper wires and modular switches.

Adequate power points for electric car charging in the basement as per statutory norms.

Provision for light points and power sockets in the kitchen for various appliances.

TV points in all bedrooms and in the living room.

Telephone points in all bedrooms and in the living room.

Split AC power points in all bedrooms, living and dining rooms.

SECURITY SYSTEM AND HOME AUTOMATION

CCTV cameras will be installed in the lobby.

Video door-phone.

24-hour security personnel with an intercom facility.

GENERAL

Basement parking.

A reticulated piped gas system in the kitchen.

Water treatment plant.

Rainwater harvesting.



Corporate Office: GM Infinite Dwelling (India) Pvt. Ltd. Azeem Pearl, #44/1, Dickenson Road, Civil Station, Bangalore - 560 008

Disclaimer: Images shown are for representational purpose only and may not bear any resemblance to actual features/offers. *T&C Apply