



Presenting a different way of living.  
For those who look at life differently.

# Indie-Commune

Independent homes for the individual in you.  
Community living for the socially-connected in you.



LIFESTYLE PLOTS

UPRERAPRJ516674









 **ARIHANT  
ENCLAVE**



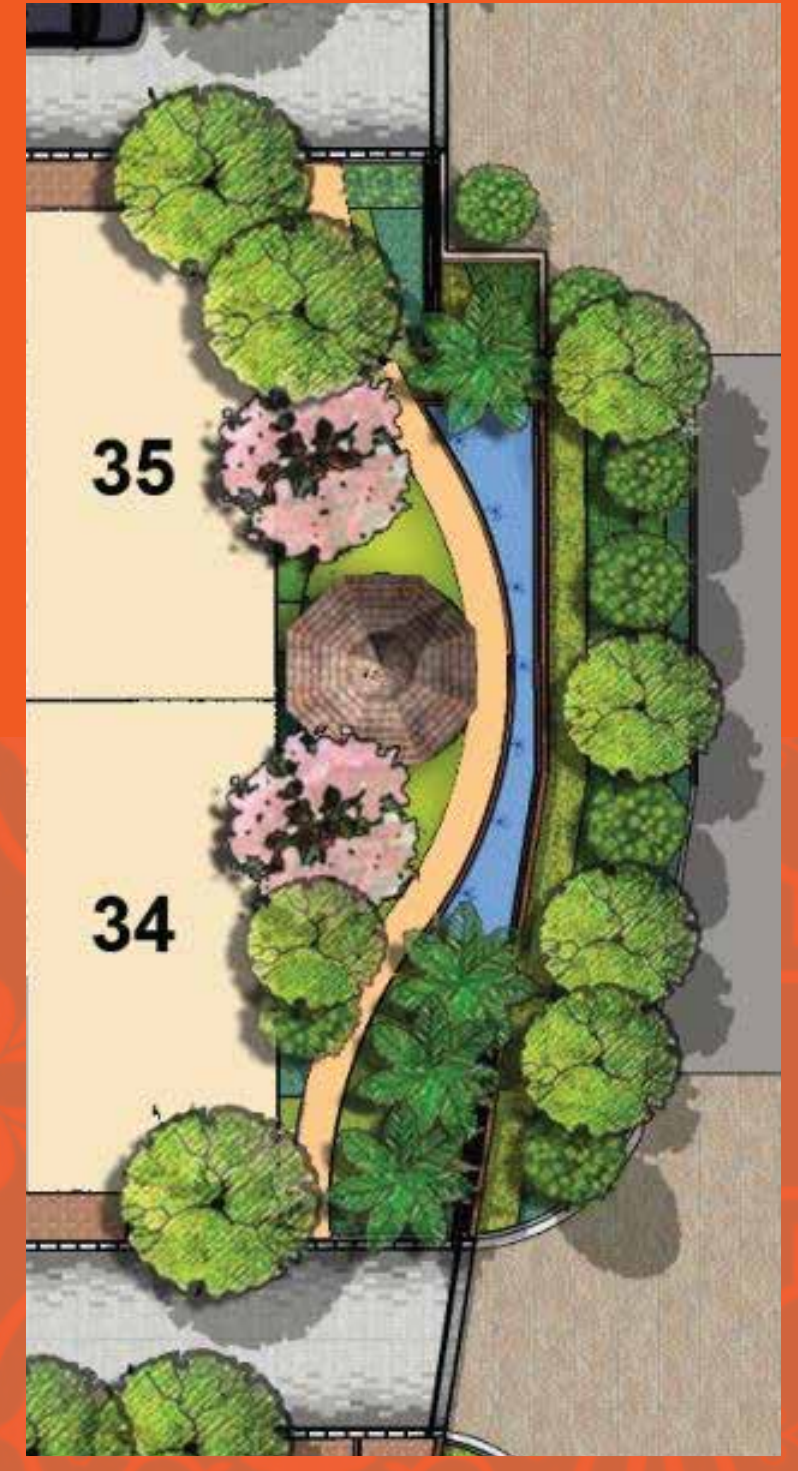




# Senior Citizen garden









# Playcourt



Artistic image for representation purpose only



# Kids' area and garden





# Trellis



Artistic image for representation purpose only



# Water fountains





# Step Seating



Artistic image for representation purpose only

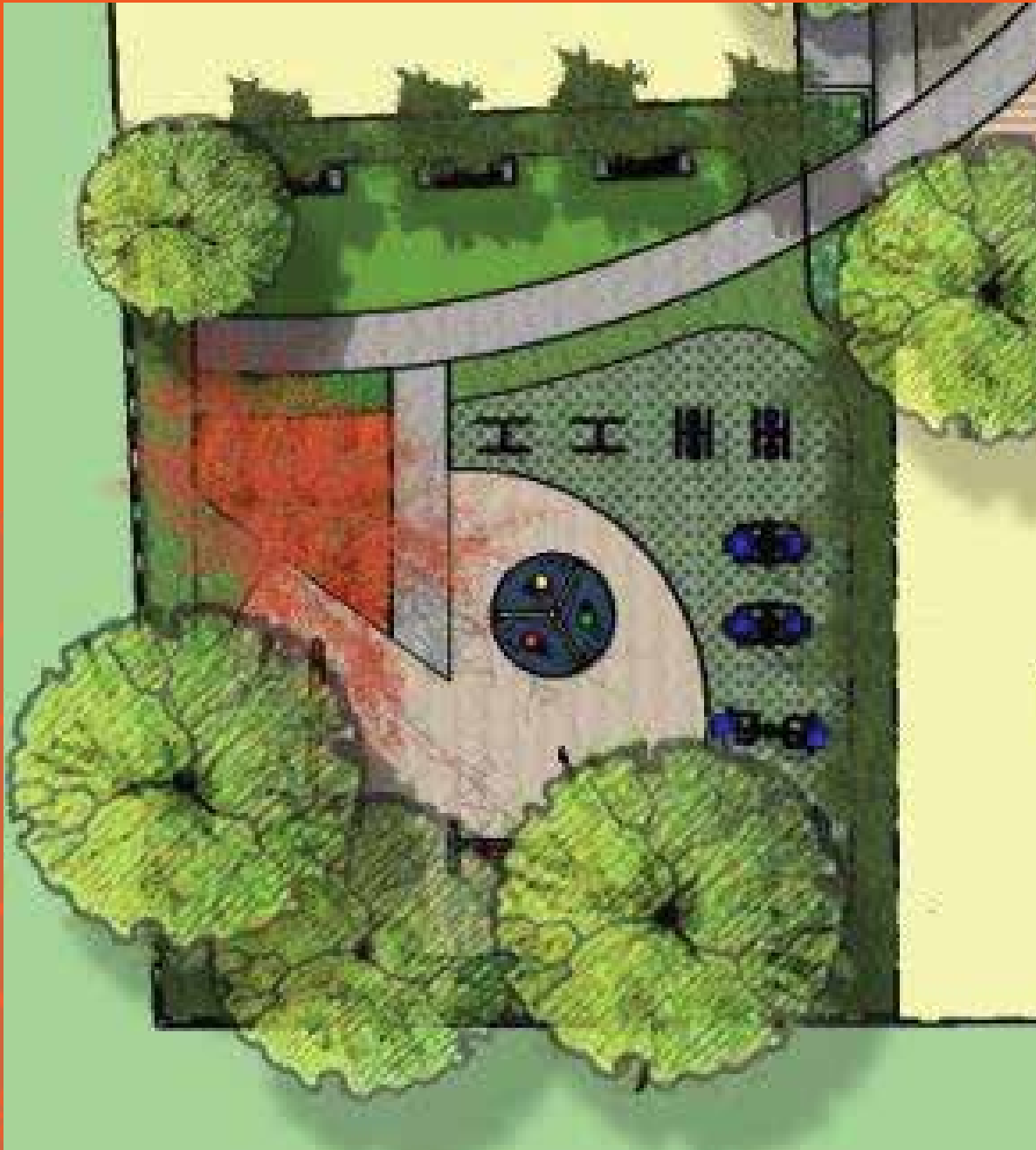


# Walkways



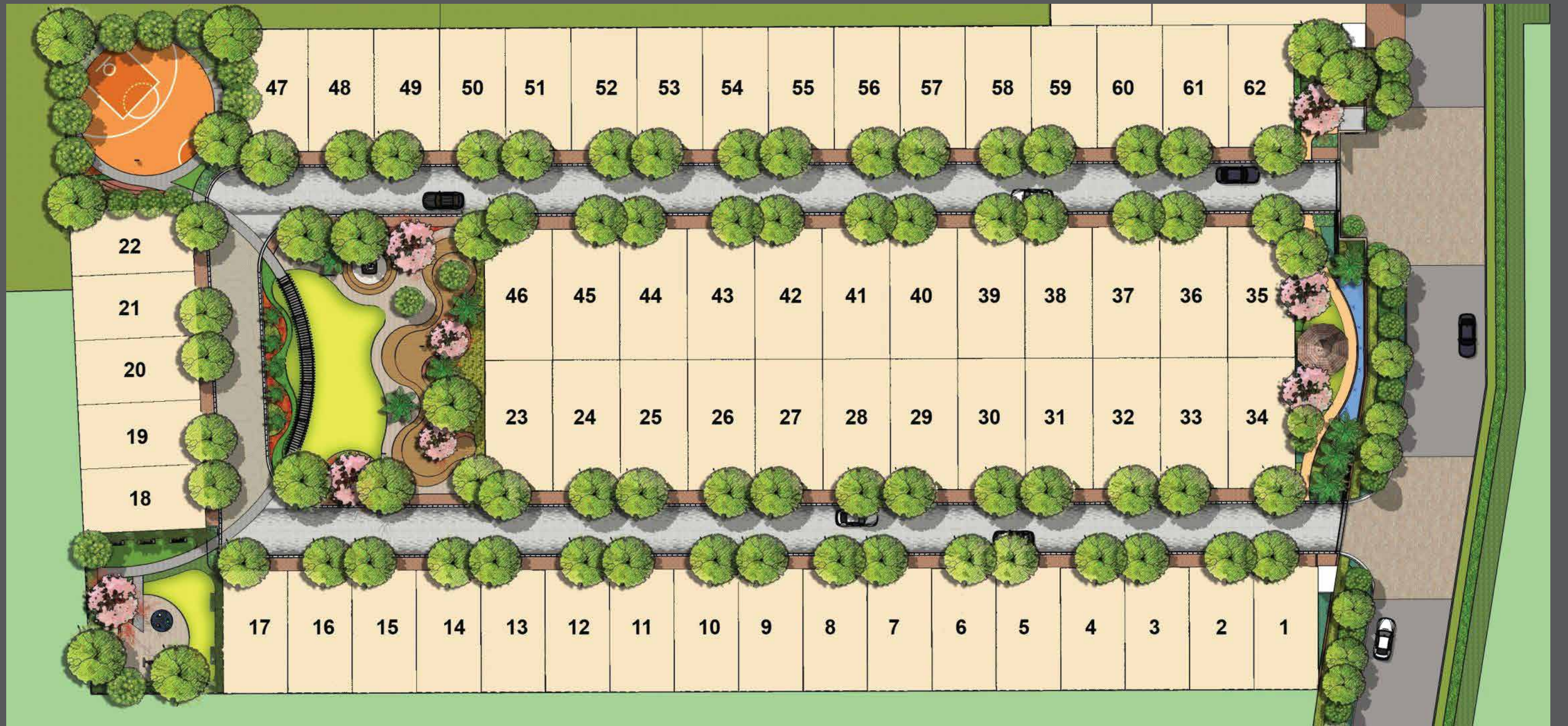


# Open Gym



Artistic image for representation purpose only









Artistic image for representation purpose only

## Option to build your villa with us

We understand your profession keeps you focussed, that's why, we can offer you services of our group company to build your own villa, the way you want to. We will understand your lifestyle choices and design & build your own villa so that you can avoid the hassles of running around.





Located within Aditya World City,

NH24, Ghaziabad

**20 mins drive**

from Delhi

**10 mins drive**

from Eastern Peripheral Expressway

**40 mins drive**

from Connaught Place

**Prominent schools, educational Institutes**

in the vicinity

**10 mins drive**

from Kavi Nagar

**In close proximity to**

malls, markets and shopping destinations



The logo for Arihant Enclave features a stylized orange symbol on the left, resembling a double 'A' or a continuous loop. To its right, the words 'ARIHANT' and 'ENCLAVE' are stacked vertically in a bold, blue, sans-serif font.

# ARIHANT ENCLAVE

LIFESTYLE PLOTS

UPRERAPRJ516674

Senior Citizen Garden | Play Court | Kids Area and Garden | Trellis | Water Fountains | Step Seating | Walkway | Open Gym

**Book your Indie-Commune. Call 730 9999 730**

Disclaimer: The advertisement is purely conceptual and constitutes no legal offering. The prospective buyer may seek all information including sanctioned approvals, Development schedule, time of delivery, specifications, facilities, amenities & scheme details before booking. Project's details are available on website of UPRERA [www.up-rera.in](http://www.up-rera.in) 1 sq.mtr. = 10.764 sq. ft. \*Terms & Conditions Apply. | [www.up-rera.in](http://www.up-rera.in)





## Why Choose Us

A house is the one thing that is truly your own. Made of your own aspirations, your desires, your plans for yourself and for generations to come.

*Come. Let us build it together.*

We are AU Group. Part of a name that has been partnering with people for generations. We consider expertise in real estate projects as fundamental for us, thus our goals are set on delivering a completely new lifestyle for you with reliability, transparency and commitment.

And we too have a dream. To help you make yours come alive.