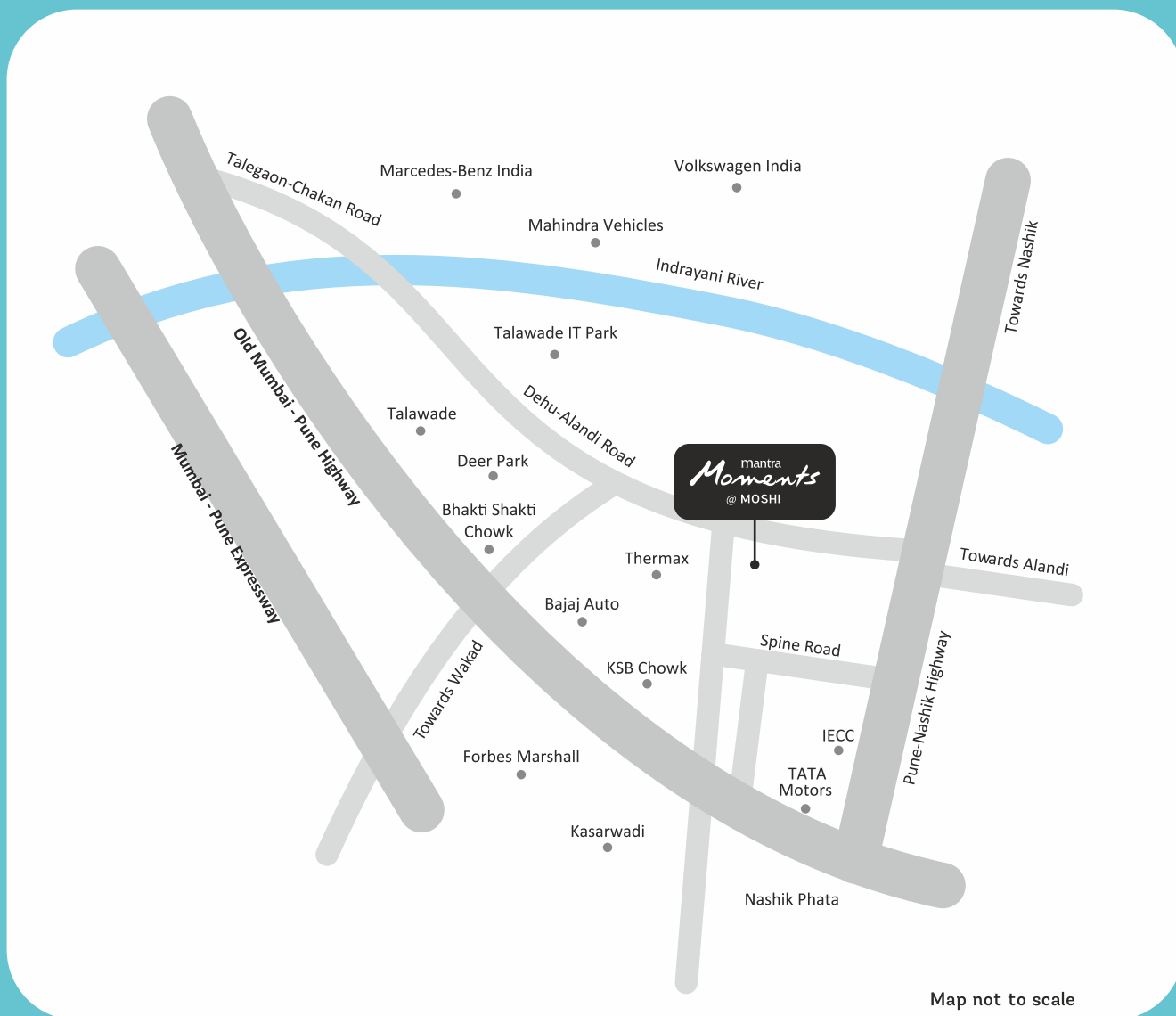


**COME,  
EXPERIENCE LIFE  
IN EVERY MOMENT.**



# LOCATION AT A GLANCE



Map not to scale

## Same Key Distances

Disney play School	02 Min.
Talawade IT Park	18 Min.
HDFC Bank	10 Min.
International Exhibition & Convention Centre Moshi	10 Min.
Chakan MIDC	21 Min.

# COME, EXPERIENCE A REAL GATED COMMUNITY.

Mantra Moments is a thriving gated community where 550+ happy families reside. The reason being homes with well-planned spaces that offers maximum usable floor space, minimum common walls, space efficient kitchen and great natural ventilation. Mantra Moments offers a warm and welcoming ambience for all to enjoy.





**LAUNCHING  
LAST PHASE**



Artistic Impression

# COME, EXPERIENCE A RISING NEIGHBOURHOOD.

Moshi is a highly coveted area located in the heart of Pimpri-Chinchwad. It has developed into one of the most promising residential localities in the neighbourhood. Superior connectivity via wide roads, top medical and educational facilities, entertainment and shopping destinations and great public infrastructure makes Moshi a highly convenient residential destination. Even major industrial destinations like Chakan, Bhosari and Talawade are just a short drive away.

## **Multiple access routes**

- Spine Road • NH 60 • Dehu-Alandi Road



# KNOW YOUR LOCALE



## MEDICAL FACILITIES

- Aditya Birla Memorial Hospital – 28min
- Unique Multispeciality Hospital – 21min
- ACCORD Hospital – 15min
- Sainath Hospital – 15min
- Sabale Hospital – 6min
- Dhanashree Hospital – 17min



## EDUCATION INSTITUTES

- Shri Shri Ravi Shankar School – 9min
- Silver Bells International School – 10min
- SNBP International School – 7min
- City Pride International School – 7min
- Sadhu Vaswani School – 15min
- Upcoming COEP College – 9min



## RETAIL DEVELOPMENTS

- Spine City Mall – 13min
- DMart – 6min
- City One Mall – 22min
- Big Bazaar – 22min
- Pantaloons – 21min



## EMPLOYMENT HUBS

- Chakan – 21min
- Bhosari – 21min
- Talawade – 18min



# COME, EXPERIENCE AN ACTIVE LIFESTYLE.

Premium lifestyle amenities and thoughtfully planned outdoor spaces pave the way for an active lifestyle. Every amenity is ready to use so you can experience them first hand. Whether you host private gatherings, take a dip in the pool or just bask in the calm open ambience, Mantra Moments always keeps you healthy, active and connected.



# AMENITIES



GARDEN



GYM



CLUBHOUSE



SWIMMING  
POOL



CHILDREN'S  
PLAY AREA



INDOOR  
GAMES



UTILITY  
RETAIL SHOP



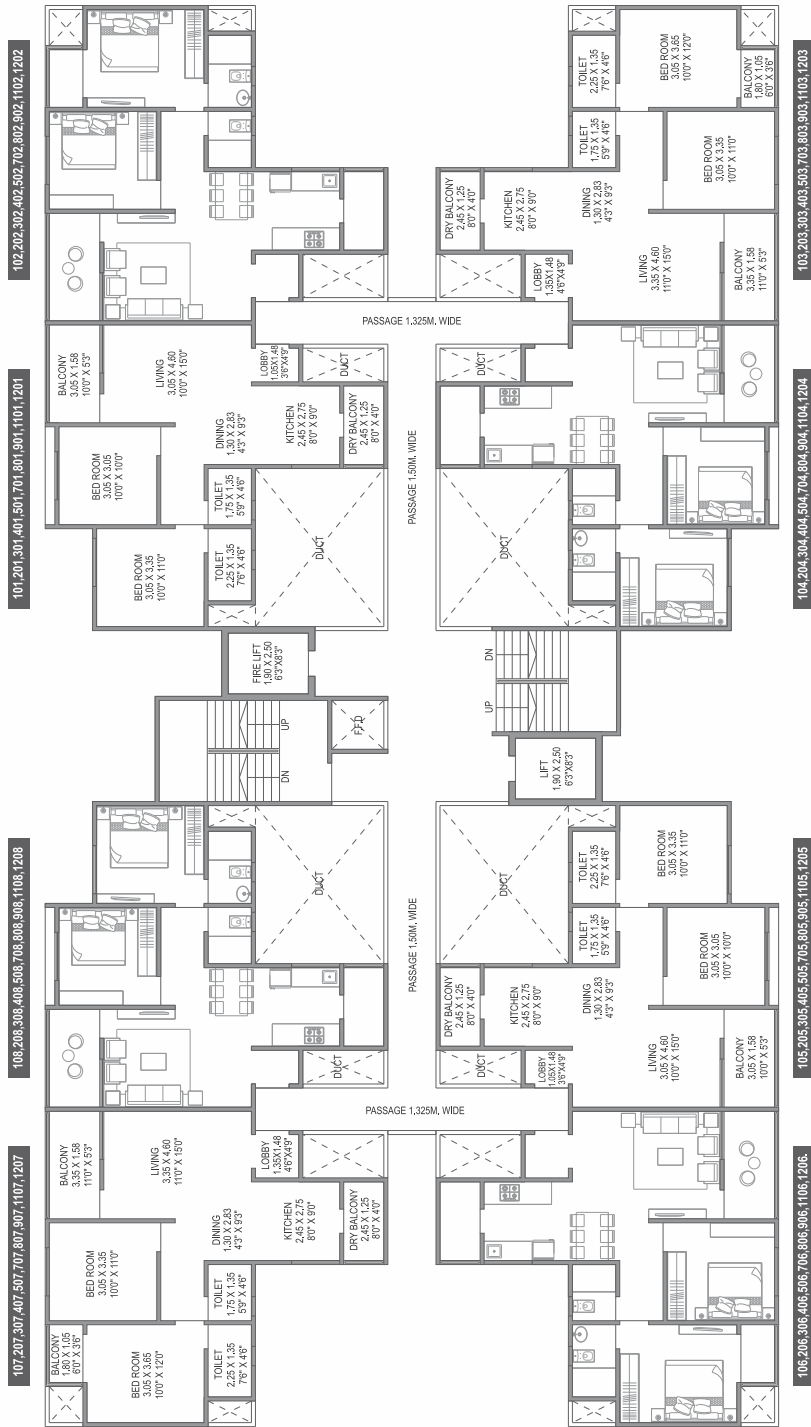
MULTIPURPOSE  
ROOM





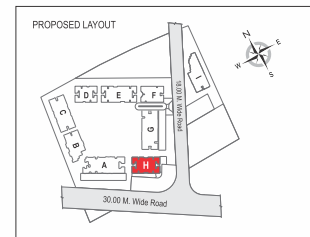
# WING-H:

Typical 1st, 2nd, 3rd, 4th, 5th, 7th, 8th, 9th, 11th & 12th Floor Plan



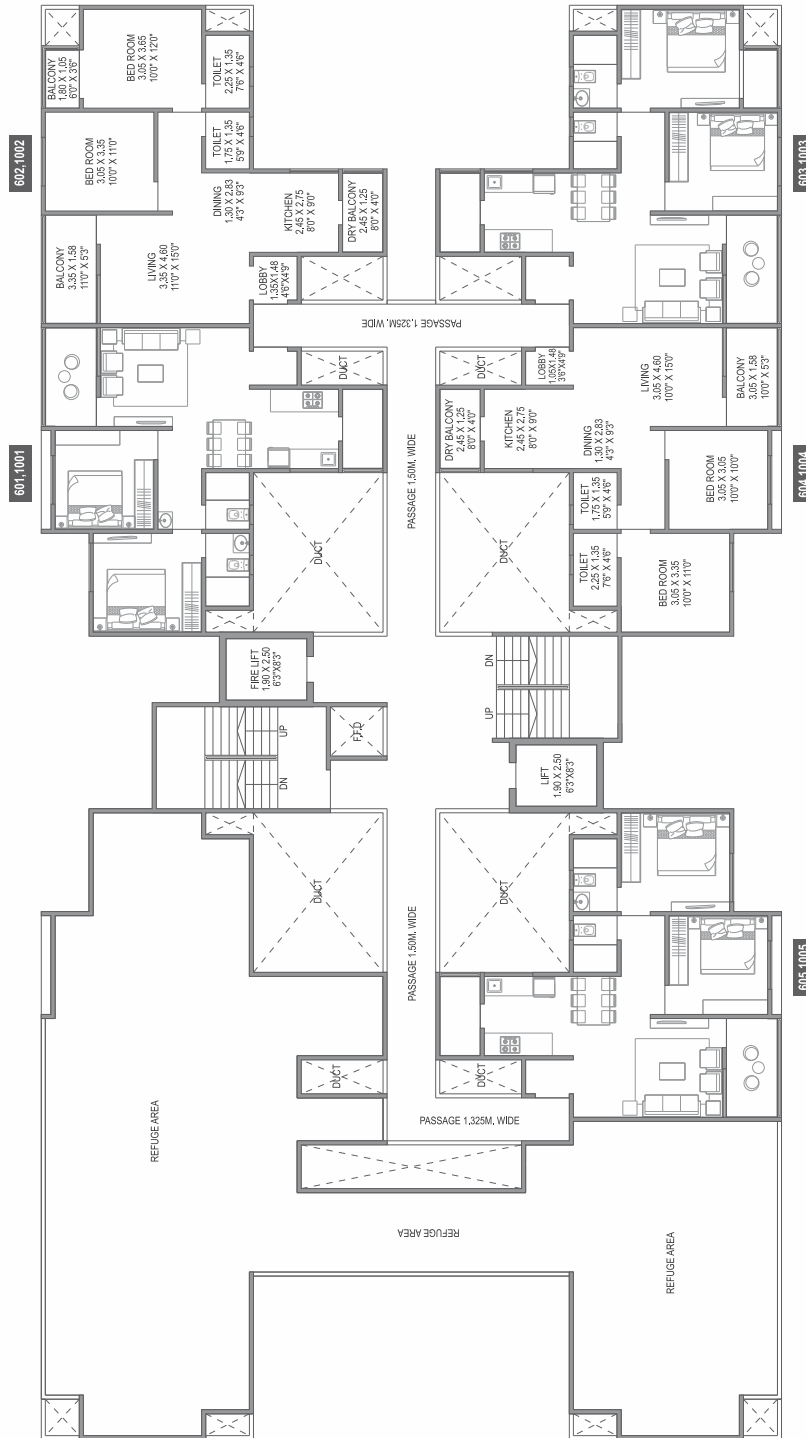
## AREA STATEMENT

Flat No.	Flat Type	Carpet Area		Balcony		Dry Balcony		Gross Usable Area	
		sq.m.	sq.ft.	sq.m.	sq.ft.	sq.m.	sq.ft.	sq.m.	sq.ft.
101, 201, 301, 401, 501, 701, 801, 901, 1101, 1201.	2 BHK	56.21	605.04	4.76	51.24	3.01	32.40	63.98	688.68
102, 202, 302, 402, 502, 702, 802, 902, 1102, 1202.	2 BHK	60.38	649.93	7.09	76.32	3.01	32.40	70.48	758.65
103, 203, 303, 403, 503, 703, 803, 903, 1103, 1203.	2 BHK	60.38	649.93	7.09	76.32	3.01	32.40	70.48	758.65
104, 204, 304, 404, 504, 704, 804, 904, 1104, 1204.	2 BHK	56.21	605.04	4.76	51.24	3.01	32.40	63.98	688.68
105, 205, 305, 405, 505, 705, 805, 905, 1105, 1205.	2 BHK	56.21	605.04	4.76	51.24	3.01	32.40	63.98	688.68
106, 206, 306, 406, 506, 706, 806, 906, 1106, 1206.	2 BHK	60.38	649.93	7.09	76.32	3.01	32.40	70.48	758.65
107, 207, 307, 407, 507, 707, 807, 907, 1107, 1207.	2 BHK	60.38	649.93	7.09	76.32	3.01	32.40	70.48	758.65
108, 208, 308, 408, 508, 708, 808, 908, 1108, 1208.	2 BHK	56.21	605.04	4.76	51.24	3.01	32.40	63.98	688.68



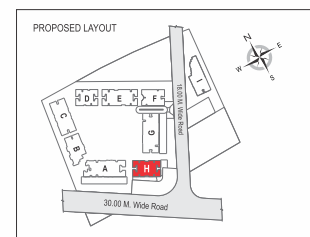
- Note:
- \* Carpet Area is calculated according to RERA norms, Excluding Plaster thickness & Including Cupboard Area.
  - Plaster Thickness are considered as Internal Plaster 10mm & External Plaster 20mm
  - All the areas other than carpet area are mentioned for illustration purpose only.
  - Sale of apartment is on carpet area only.
  - Gross usable area = Flat Carpet Area + Enclosed Balcony + Terrace Area + Dry Terrace.
  - All Dimensions mentioned are for Unfinished surface & Including Enclosed Balcony.

**WING-H:**  
Typical 6th/10th Floor Plan



AREA STATEMENT

Flat No.	Flat Type	Carpet Area		Balcony		Dry Balcony		Gross Usable Area	
		sq.m.	sq.ft.	sq.m.	sq.ft.	sq.m.	sq.ft.	sq.m.	sq.ft.
601, 1001.	2 BHK	56.21	605.04	4.76	51.24	3.01	32.40	63.98	688.68
602, 1002.	2 BHK	60.38	649.93	7.09	76.32	3.01	32.40	70.48	758.65
603, 1003.	2 BHK	60.38	649.93	7.09	76.32	3.01	32.40	70.48	758.65
604, 1004.	2 BHK	56.21	605.04	4.76	51.24	3.01	32.40	63.98	688.68
605, 1005.	2 BHK	56.21	605.04	4.76	51.24	3.01	32.40	63.98	688.68
Refuge Flat	2 BHK	0.00	0.00	0.00	0.00	0.00	0.00	0.00	0.00
Refuge Flat	2 BHK	0.00	0.00	0.00	0.00	0.00	0.00	0.00	0.00
Refuge Flat	2 BHK	0.00	0.00	0.00	0.00	0.00	0.00	0.00	0.00



- Note:
- \*\* Carpet Area is calculated according to RERA norms, Excluding Plaster thickness & Including Cupboard Area.
  - Plaster Thickness are considered as Internal Plaster 10mm & External Plaster 20mm
  - All the areas other than carpet area are mentioned for illustration purpose only.
  - Sale of apartment is on carpet area only.
  - Gross usable area = Flat Carpet Area + Enclosed Balcony + Terrace Area + Dry Terrace.
  - All Dimensions mentioned are for Unfinished surface & Including Enclosed Balcony.

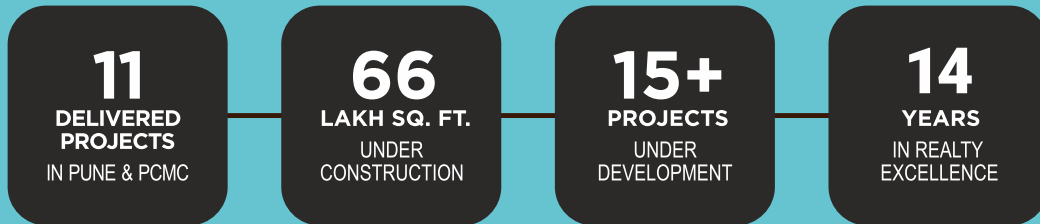


Mantra Properties has expanded rapidly across Pune.

Since its inception in 2007,  
we've always strived to provide the best value to our customers by  
carefully listening to their needs.

Our intelligent design and emphasis on quality, transparency  
and delivery have enabled us to gain the customer's as well as the market's trust.

We are proud to hold under our belt



## ONGOING PROJECTS

Grandstand Trinity - Kothrud | 99 Riverfront - Baner | Mantra Insignia - Keshavnagar, Mundhwa  
29 Gold Coast - Tingre Nagar | Mantra Moments - Moshi | Mantra Parkview - Dhayari  
Mantra Essence - Undri | Mantra 24 West - Gahunje | 7 Hills - Kirkitwadi | Mantra Essence Bungalow Plots - Undri  
Mantra City 360 - Talegaon | Mantra Monarch - Balewadi | Mantra Residency - Nighoje, Chakan  
Mantra Magic - Moshi Annex, Chimbil | Mantra Divine - Wadebolai, Wagholi Annex | Mantra Montana, Dhanori

## UPCOMING PROJECTS

Akurdi | Balewadi | Koregaon Park Annex | Kharadi

To experience real living call  
**CALL 020 67264763**

MAHARERA REG. NO:

P52100029194 | P52100000094 | P52100000564 | P52100000306 | P52100008951 | P52100014375

[www.mantraproperties.in](http://www.mantraproperties.in)