



MLN SIGNATURE



GIFT YOURSELF

A Balanced City Life





FLOOR PLAN & DIMENSIONS

2BHK

FACING	AREA IN SQ FT
EAST	1269, 1258, 1268, 1258 1300, 1277, 1165, 1162

WEST 1165, 993, 1277

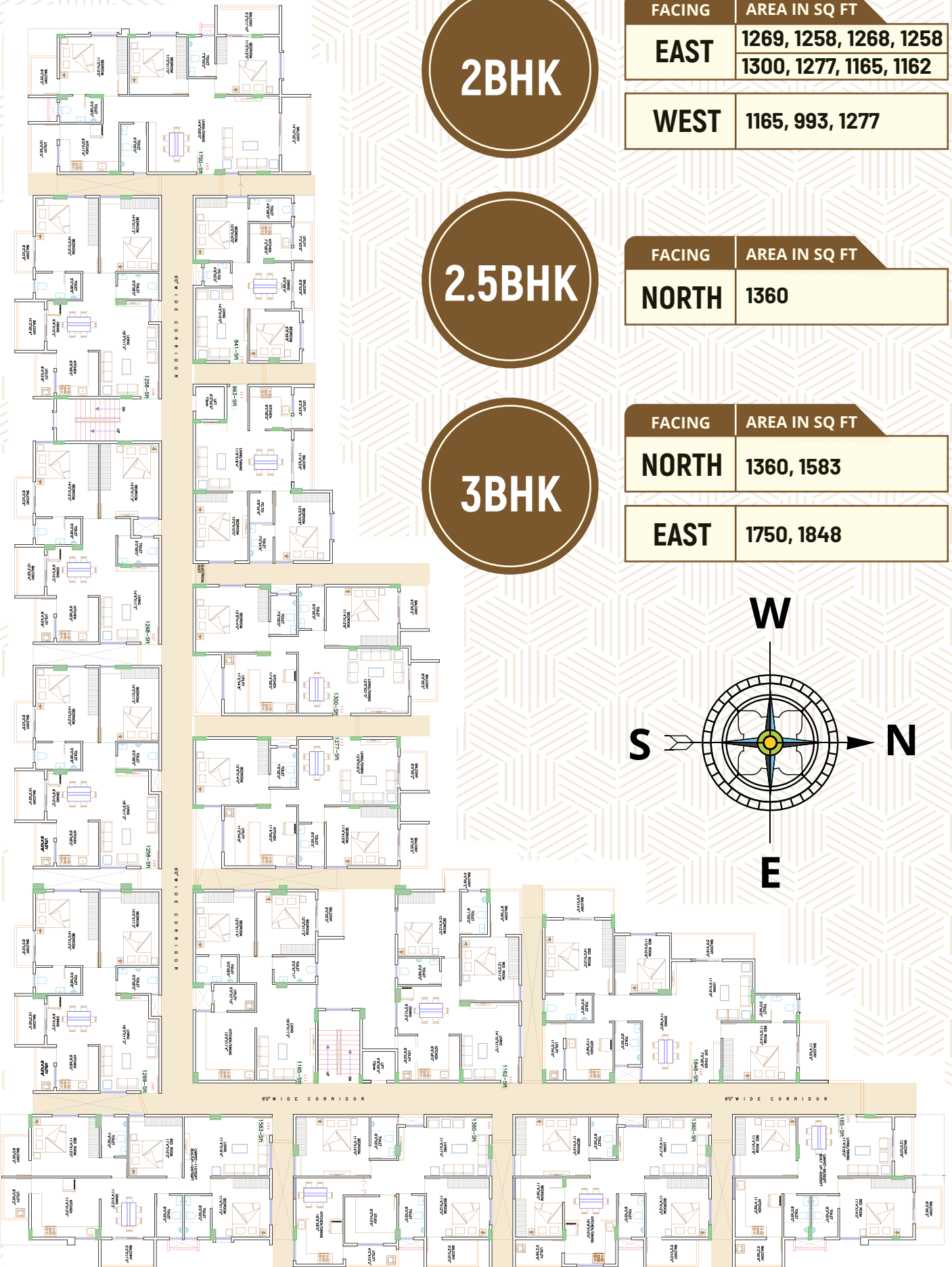
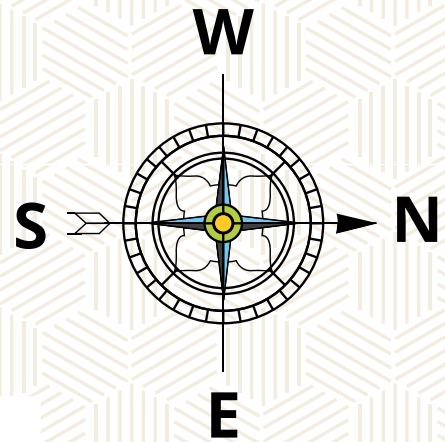
2.5BHK

FACING	AREA IN SQ FT
NORTH	1360

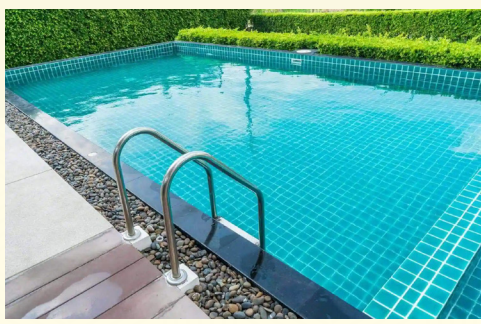
3BHK

FACING	AREA IN SQ FT
NORTH	1360, 1583

EAST 1750, 1848



AMENITIES



SWIMMING POOL



INDOOR GAMES



GYM



MULTIPURPOSE HALL





STRUCTURE

- ✓ Exclusive designed Vastu-compliant flats with RCC Covered structure and concrete block walls
- ✓ Stilt covered car parking
- ✓ Visitors' Car parking



FLOORING AND DADOING

- ✓ Granite flooring in the entrance lounge and staircase area
- ✓ Standard quality 2x4 vitrified flooring for the entire flat
- ✓ Anti-skid/rustic tiles in bathrooms and balconies with skirting
- ✓ Standard quality ceramic designer tiles dado up to 7 feet in toilets



KITCHEN

- ✓ Polished black granite platform with standard quality single drain sink
- ✓ Provision for water purifier
- ✓ Standard quality tiles for dado up to 3ft
- ✓ Provision for washing machine in utility



DOORS & WINDOWS

- ✓ **Main door** - Teak wood
- ✓ **Bedroom** - Sal wood
- ✓ **Toilet** - Sal wood
- ✓ **Windows** - UPVC Windows with Mosquito mesh



PLUMBING AND SANITARY

- ✓ White colour standard size wash basins in bathrooms and dining area
- ✓ Concealed flush tank in master bedroom
- ✓ Standard quality EWC for other bathrooms – Jaguar or equivalent make



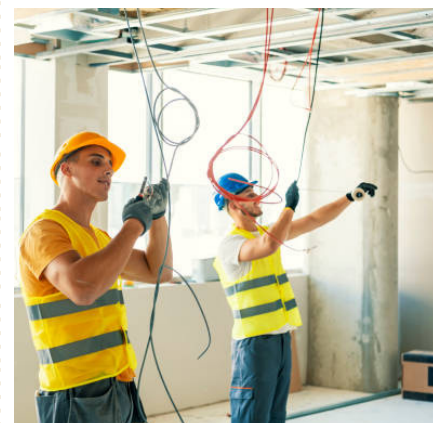
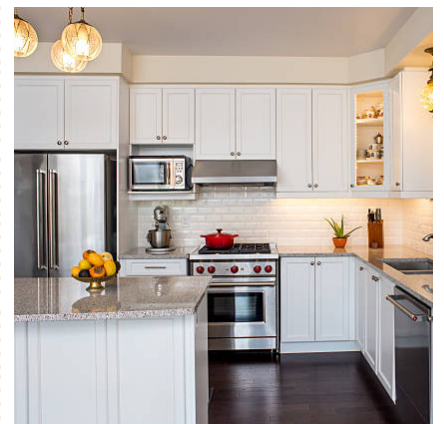
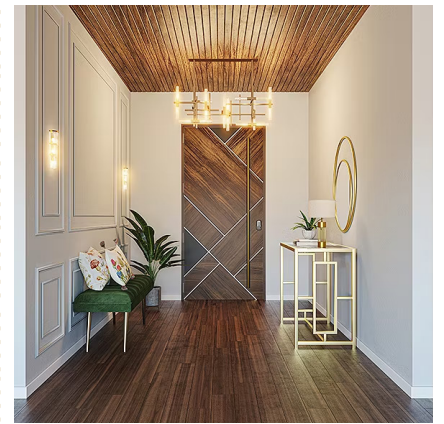
ELECTRICAL & COMMUNICATION

- ✓ Fire resistant PVC insulated copper wires
- ✓ Anchor electrical switches
- ✓ TV & Phone points in living
- ✓ A/C point in living room and bedrooms
- ✓ DG back-up for all lighting points (1KVA)



PAINTING

- ✓ Emulsion for interior and ceiling
- ✓ Melamine polish for the main door
- ✓ Enamel paint for bedroom toilet balcony and utility doors
- ✓ Weather shield and textured paint for exteriors



WATER

- ✓ Provision for water supply from UG sump and OH



LIFTS

- ✓ 2 passenger lift of reputed brand

PROXIMITY

- ✓ International Airport - 20 Kms
- ✓ Hebbal - 6.5 km
- ✓ Yelahanka Railway Station - 1.9 Kms
- ✓ Kogilu Bus Stop - 1.2 Km

NEARBY MALLS

- ✓ RMZ Galleria - 1.7 Kms
- ✓ Esteem Mall - 5.8 Kms
- ✓ Elements Mall - 11 Kms
- ✓ Bhartiya Mall - 8.5 km

NEARBY HOSPITALS

MANIPAL HOSPITAL - 6.2 KMS

ASTER - 5.5 KMS

MOTHERHOOD - 5 KMS

IT PARKS / SEZ

- ✓ Manyata Tech Park - 8.3 Kms
- ✓ Kirloskar Business Park - 6 Kms
- ✓ Astra Zeneca - 8.1 Kms
- ✓ Ecopolis SEZ - 8 Kms
- ✓ KIADB SEZ (4500 acres) - 20 Kms
 - IT & Aerospace Park
 - Financial City

NEARBY COLLEGES

- ✓ BMS IT - 7 Kms
- ✓ Brindavan - 5.3 Kms
- ✓ Sindhi - 6.5 Kms
- ✓ Presidency University - 14 Kms
- ✓ Reva University - 6.4 Kms
- ✓ Manipal University - 12 Kms
- ✓ Nitte Meenakshi - 6.4 Kms

NEARBY SCHOOLS

- ✓ Vidyashilp Academy - 2 Kms
- ✓ Nitte International School - 12 Kms
- ✓ Canadian International - 4.5 Kms
- ✓ Stone Hill International - 12 Kms
- ✓ Mallaya Aditi International - 3 Kms
- ✓ Delhi Public School - 7.5 Kms
- ✓ Vibgyor High School - 5.7 Kms



ROUTE MAP



MLN SIGNATURE

 Sy no 56/3, 56/1, Shivanahalli Village
Yelahanka Hobli Yelahanka Bangalore Urbn,
Karnataka -560064



 9900 341 123

 sales@mlnsignature.in