



SENATE

Imagine - Live - Rejoice



BBMP APPROVED | 224 UNITS | STILT + 4 FLOORS
BEGUR, BENGALURU - 560068

CHAIRMAN'S MESSAGE:



In a dynamic world like today, one must play multiple roles to overcome the challenges and succeed. And this is more so apparent in your professional and personal life. It's easier said than done, but being efficient at work and simultaneously fulfilling your presence at home is daunting.

Prioritising you and your needs has always been on our list in bringing out the most suitable dream home.

DS-Max Senate is explicitly sculpted for those who toggle smoothly between work and personal life. We present to you a Stilt +4 floors elegant habitat that will fulfil all your dreams and a spectacular landmark of the locality that not only promises a majestic lifestyle but also ensures your proximity to the city centres and the weekend getaways.

We stand ahead of time in all aspects, be it architecture, design, location, lifestyle, price, interiors, customer service and facility management, because of our deep understanding of what you deserve and your needs.

Live with elegance, dignity, peace and ultimately, relish every bit in the "Joy of Living."

To end with, I appreciate your prudence in having chosen the right asset that has the power to balance your personal and work-life.

We offer more than we promise:

Maintenance: Once you own a DS-MAX home, it is our responsibility to take care of your needs. A lifetime of promise.

Rental Management: Finding a suitable tenant, rental agreement, periodical check of the property, and follow-up of rents/maintenance charges from the tenants is no longer a hassle for you.

Modification: With the home being a lifetime affair for most of us, it's always important to keep refreshing the looks and feel. No matter how old or new is your house; we will ensure it's restored.

Interiors: Our state-of-the-art interior factory is all geared to bring life to your imagination.

Upgrade Support and Resale Assistance: We believe in Customer-Affinity. For a journey beginning with us and beyond.

Dr. K V Satish,
Chairman, DS-Max Group

22,000+ Customers | 130+ Completed Projects | 30+ On-going Projects

150+ International & National Awards | 500+ Quality Checks | 30+ Bank Partnerships

ISO Certified Quality Practices | Standard Construction Practices | RERA Compliant Projects

BBMP/BDA/BMRDA/BIAPPA – Approved Projects | Lifetime Support and Assurance

OVERVIEW:



An elegant lifestyle awaits you at DS-MAX Senate on an ample stretch of land in Begur, with a Stilt + 4 floors. Located right in the middle of a promising city area, surrounded by an atmosphere you'll long to go back home. Ds-Max Senate is situated in an upcoming social infrastructure in the immediate vicinity, offering you a comfortable urban lifestyle and a promising financial future. The uniqueness that sets DS-MAX Senate apart are:

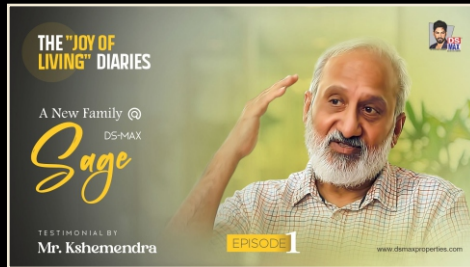
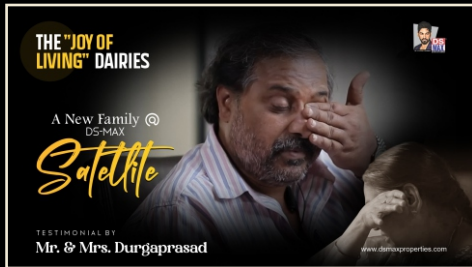
- Less than 20 minutes drive to all major city junctions.
- Located close to renowned Schools, Hospitals, & IT hubs.
- Dual Metro Stations (Pink-line and Yellow-line).
- Restaurants, Cafes, Malls, Lounges and other Hang-outs to satiate your weekend desires.
- Spacious 1, 2 & 3-BHK elegant apartments, ranging from 799 sq. ft. to 1620 sq. ft.
- In an awe-inspiring vicinity of the Begur lake, a jogger's paradise. Sunsets can be an affair to remember now.
- Built on ample land area with a low population density to offer you a regal lifestyle.
- Prices bear the hallmark of DS-MAX Properties to make it well within your means.
- Aesthetically built structure with elegantly spaced apartments and bespoke interiors for optimum living comfort.



ONE CODE - 100+ emotional stories captured in it...



SCAN TO ENJOY IT!



Google Rating

Based on 2,743 + reviews



We are grateful to our customers for rating us 4.1 out of 5 on Google. Your valuable feedback and ratings always empower us never to be content with what we deliver.

Constantly driven by customer-centric values prioritizing your needs and happiness, we strive to provide services beyond expectations, leaving no stone unturned to secure a comfortable life by flavouring the "Joy of Living" in our home.

TO KNOW MORE ABOUT THE PROJECT



+91 8880 189 000



www.dsmaxproperties.com



OFFICE : #1797, 14th Main Road, 5th Block, Brindavan Nagar, HBR Layout, Bangalore – 560 043.



@dsmaxpropertiespvtltd



@dsmaxbuilders



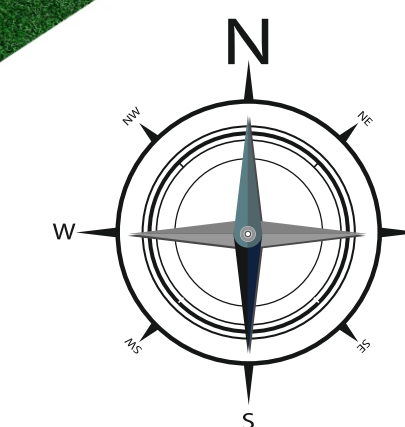


SENATE
Imagine - Live - Rejoice



GROUND FLOOR AREA STATEMENT

FLAT NO.	FLAT TYPE	CARPET AREA	FACING	SUPER BUILT-UP AREA	FLAT NO.	FLAT TYPE	CARPET AREA	FACING	SUPER BUILT-UP AREA	FLAT NO.	FLAT TYPE	CARPET AREA	FACING	SUPER BUILT-UP AREA
1	2-BHK	689	EAST	1060	20	2-BHK	708	EAST	1090	39	2-BHK	654	NORTH	1007
2	2-BHK	689	EAST	1060	21	2-BHK	708	EAST	1090	40	3-BHK	835	NORTH	1285
3	2-BHK	689	EAST	1060	22	2-BHK	708	EAST	1090	41	1-BHK	519	NORTH	799
4	2-BHK	689	EAST	1060	23	2-BHK	708	EAST	1090	42	2-BHK	583	NORTH	897
5	2-BHK	689	EAST	1060	24	2-BHK	708	EAST	1090	43	2-BHK	583	NORTH	897
6	2-BHK	689	EAST	1060	25	2-BHK	708	EAST	1090	44	2-BHK	645	NORTH	993
7	2-BHK	689	EAST	1060	26	2-BHK	708	EAST	1090	45	2-BHK	667	NORTH	1027
8	2-BHK	755	EAST	1162	27	2-BHK	708	EAST	1090	46	3-BHK	826	NORTH	1271
9	2-BHK	628	EAST	967	28	2-BHK	708	EAST	1090	47	3-BHK	738	NORTH	1136
10	2-BHK	745	EAST	1147	29	2-BHK	708	EAST	1090	48	3-BHK	841	NORTH	1294
11	2-BHK	658	NORTH	1013	30	1-BHK	530	NORTH	816	49	3-BHK	910	EAST	1400
12	2-BHK	658	NORTH	1013	31	2-BHK	755	EAST	1162	50	3-BHK	855	EAST	1316
13	2-BHK	658	NORTH	1013	32	2-BHK	755	EAST	1162	51	3-BHK	808	EAST	1244
14	2-BHK	658	NORTH	1013	33	2-BHK	755	EAST	1162	52	2-BHK	720	EAST	1108
15	3-BHK	816	NORTH	1256	34	2-BHK	755	EAST	1162	53	2-BHK	646	EAST	994
16	2-BHK	658	NORTH	1013	35	3-BHK	898	NORTH	1382	54	2-BHK	684	EAST	1053
17	2-BHK	640	NORTH	985	36	2-BHK	654	NORTH	1007	55	2-BHK	674	EAST	1037
18	2-BHK	658	NORTH	1013	37	2-BHK	654	NORTH	1007	56	2-BHK	626	EAST	964
19	2-BHK	636	NORTH	979	38	2-BHK	654	NORTH	1007					



SPECIFICATIONS

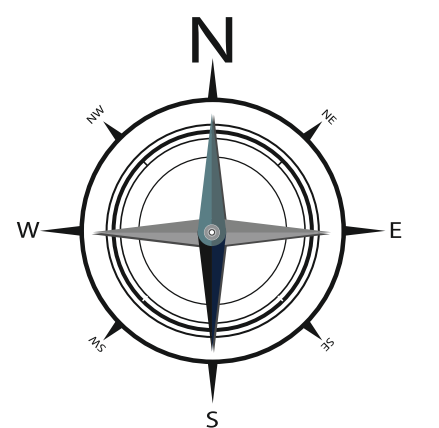
STRUCTURE RCC Framed Structure	DOORS Main Door : Red sal wood frame & veneered solid shutter	PAINTING Oil bound distemper on Ceilings & Acrylic Emulsion on Internal Walls
WALLS Concrete block masonry	ELECTRICAL Anchor / equivalent modular switches, Anchor / equivalent copper wires	PLUMBING European water closet (EWC) of branded make, hot & cold water mixer unit with showers in all toilets. All chrom plated fittings of branded make
FLOORING Vitrified flooring		
WINDOWS Aluminum sliding glass shutter		

Disclaimer : The information presented in this brochure is for marketing purposes and not a legal offering. DS-MAX reserves the right to change, modify or delete any section mentioned herein without prior permission or notice. Please refer to your sale agreement copy for better understanding.



TYPICAL FLOOR AREA STATEMENT

FLAT NO.	FLAT TYPE	CARPET AREA	FACING	SUPER BUILT-UP AREA	FLAT NO.	FLAT TYPE	CARPET AREA	FACING	SUPER BUILT-UP AREA	FLAT NO.	FLAT TYPE	CARPET AREA	FACING	SUPER BUILT-UP AREA
1	2-BHK	689	EAST	1060	20	2-BHK	708	EAST	1090	39	3-BHK	781	NORTH	1202
2	2-BHK	689	EAST	1060	21	2-BHK	708	EAST	1090	40	3-BHK	967	NORTH	1488
3	2-BHK	689	EAST	1060	22	2-BHK	708	EAST	1090	41	2-BHK	616	NORTH	948
4	2-BHK	689	EAST	1060	23	2-BHK	708	EAST	1090	42	2-BHK	647	NORTH	996
5	2-BHK	689	EAST	1060	24	2-BHK	708	EAST	1090	43	2-BHK	673	NORTH	1036
6	2-BHK	689	EAST	1060	25	2-BHK	708	EAST	1090	44	2-BHK	645	NORTH	993
7	2-BHK	689	EAST	1060	26	2-BHK	708	EAST	1090	45	3-BHK	781	NORTH	1202
8	2-BHK	755	EAST	1162	27	2-BHK	708	EAST	1090	46	3-BHK	938	NORTH	1444
9	2-BHK	628	EAST	967	28	2-BHK	708	EAST	1090	47	3-BHK	825	NORTH	1270
10	2-BHK	745	EAST	1147	29	2-BHK	708	EAST	1090	48	3-BHK	931	NORTH	1433
11	2-BHK	658	NORTH	1013	30	1-BHK	530	NORTH	816	49	3-BHK	1053	EAST	1620
12	2-BHK	658	NORTH	1013	31	2-BHK	755	EAST	1162	50	3-BHK	931	EAST	1433
13	2-BHK	658	NORTH	1013	32	2-BHK	755	EAST	1162	51	3-BHK	869	EAST	1337
14	2-BHK	658	NORTH	1013	33	2-BHK	755	EAST	1162	52	2-BHK	792	EAST	1219
15	3-BHK	816	NORTH	1256	34	2-BHK	755	EAST	1162	53	2-BHK	708	EAST	1090
16	2-BHK	658	NORTH	1013	35	3-BHK	998	NORTH	1536	54	2-BHK	768	EAST	1182
17	2-BHK	640	NORTH	985	36	3-BHK	780	NORTH	1200	55	2-BHK	747	EAST	1150
18	2-BHK	658	NORTH	1013	37	3-BHK	781	NORTH	1202	56	2-BHK	708	EAST	1090
19	2-BHK	636	NORTH	979	38	3-BHK	781	NORTH	1202					



LOADED WITH LUXURIOUS AMENITIES

SWIMMING POOL

KIDS' PLAY AREA

GYMNASIUM

ECO SEWAGE TREATMENT PLANT

PARTYHALL