

DAINTREE

BY MANA

A background image showing sunlight streaming through the canopy of trees, creating a warm, golden glow. The sun is positioned in the upper right corner, and rays of light fan out across the scene, illuminating the silhouettes of the trees.

DESIGN

When modern design and nature collaborate, great homes are built.

Homes that resonate with the wisdom of nature, while providing every comfort and convenience that you seek. Homes that harness nature's power to create a world that is at once strikingly modern, and soulfully natural.


A dramatic landscape photograph featuring a bright sunburst breaking through a cloudy sky. The sun is positioned in the upper right quadrant, creating a strong lens flare effect. The sky is filled with soft, white clouds. In the foreground, the dark silhouettes of trees and foliage are visible on the left side, framing the scene. The overall mood is serene and natural.

MEETS

NATURE



WELCOME
TO DAINTREE



Ancient knowledge blends with modern technology and design, to create beautiful homes, and lives.



EARTH MEETS ENGINEERING

Welcome to Daintree Courtyard Homes.

A courtyard in a home creates harmony between man and nature, at a physical and symbolic level. Daintree's double-height courtyards serve as the focal-point, and connect all spaces in the home.

A modern interior with large glass doors leading to a lush garden. The floor is made of light-colored wood, and the ceiling has a recessed circular light fixture. The garden outside is filled with green grass, trees, and flowering plants.

More Responsible

None of the topsoil is wasted. It all goes back into our villas. The recycled topsoil forms the base for every brick, and it's also integrated into the surrounding landscaping.

A close-up of a textured, grey material, possibly a brick or plaster, showing a rough, fibrous surface.

More Elemental

The sun, and air, are filtered through skylights, and jaali-perforated walls, to provide optimal quality and quantity of light, ventilation, and comfort.

The use of porotherm bricks, perforated walls, and lime mortar plaster reduce usage of water. This also leads to less dust generated during construction.

A close-up of a textured, grey material, possibly a brick or plaster, showing a rough, fibrous surface.

More Green

There are trees that line the Tree Walk, keeping the area green, and the air clean. Then there are trees that stand as silent sentinels around every home, protecting the air quality. There are those positioned to serve as natural speed breakers. And many more that add to the natural beauty of the surroundings.



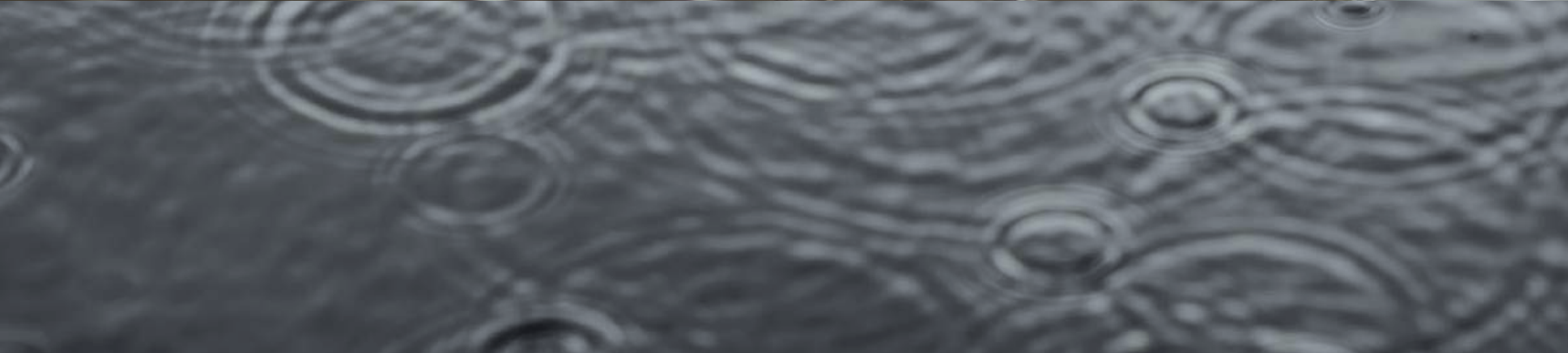


SUNLIGHT MEETS SCIENCE

Sunlight is harnessed to light every corner, generate power, and heat water.

Skylights at every level ensure that natural light reaches the furthest corners of the house, even at the lower levels.

Clerestory windows provide light, ventilation, privacy and atmosphere.



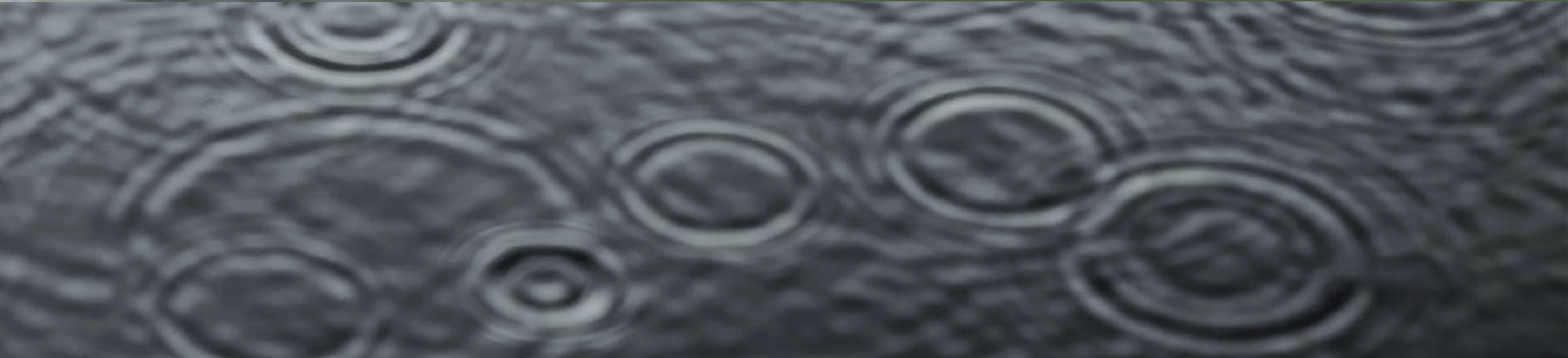


RAINDROPS MEET RECYCLING

Rainfall is precious, and is treated as such. Every little drop of water that touches the rooftops and walkways is recycled and reused.

A 7KLD tank stores enough rainwater for thirty days of use.

WTP, a purification technology treats rainwater, and makes it suitable for drinking. The treated water is of better quality than borewell water.



AIR MEETS ARCHITECTURE

Computer simulations are used to predict air-flow. They also provide sun path, wind flow, daylight and shading analyses. This lets us plan and position each construction, and ensure that it stays naturally cool, with minimum dependence on appliances.

Windows are positioned to let in fresh air. Open spaces in a villa measure 50% more than most houses.

Special insulating tiles cool the homes, and reduce

Wind-powered turbo ventilators suck out the hot air that rises to the insulated ceilings.









TRADITION MEETS MINIMALISM

Years of R and D have taught us to rely on traditional wisdom, and local resources. This helps us reduce our carbon footprint, and create superior living experiences.

Every villa is vastu-compliant.

Living, dining, and kitchen spaces flow seamlessly.

Ceilings are twice or thrice the average ceiling height.

Every villa has huge French windows, and a private backyard with a garden.

Large bathrooms, and walk-in closets create a feeling of limitlessness.

Clearly demarcated public, private and semi-private spaces ensure that your space remains yours.

Living, dining and kitchen areas feature marble flooring. The other areas boast laminated wooden flooring.



Nurturing Earth

The use of textures and river-finish stone invites us to walk barefeet and connect with the healing energy of the earth.

Walkways are built to offer acupressure, relieve pain, and allow each of us to feel fully alive.





Dynamic Ether

An abundance of space is experienced through double-height courtyards that encourage air-circulation, and balance the temperature.



Energising Fire

Brightly lit rooms with skylights, large windows and French windows, designed to follow the sun path.



Healing Air

The whisper of the wind, as it moves through the trees, provides a relaxing soundtrack to life. Ample cross-ventilation balanced the temperature inside.



Calming Water

Waterfalls, and fountains decorate the surroundings and create an atmosphere of peace.



LUXURY MEETS SUSTAINABILITY

Living in a Daintree home means that you will want for nothing. In fact, you will practically live off the bounty of nature. That's because every luxury we bring you, has sustainability at its core. Nature's offerings are treasured, and enjoyed, never squandered.

Plumbing materials and CP Fittings have a fixed flow rate that saves water.

All electrical wires, switches, and equipment are chosen for their low consumption of energy.

Low VOC paints are used to improve air quality.

Turbo ventilators keep the home naturally cool.

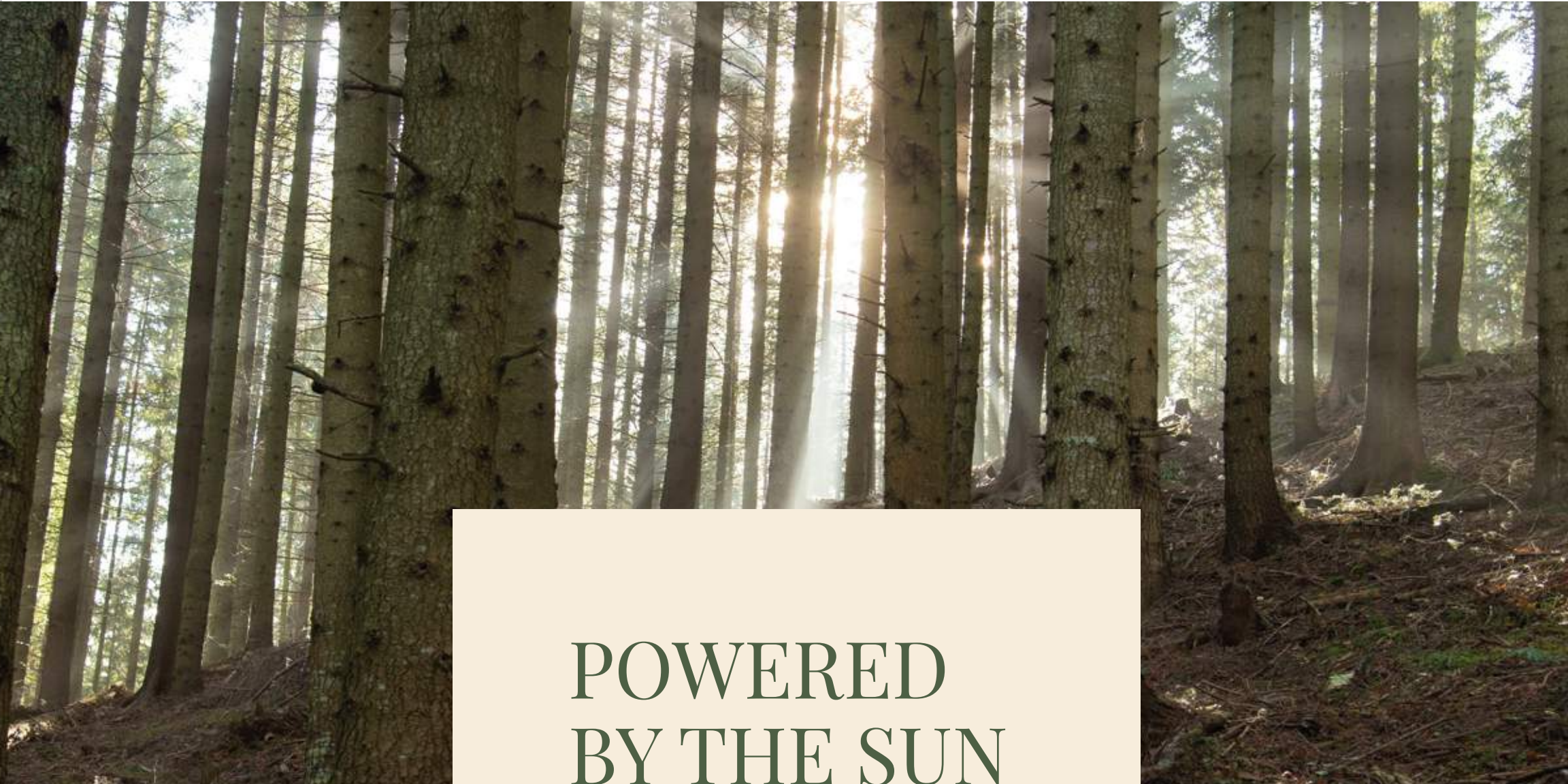
Organic Composter in the Community recycles kitchen waste.

Local Indian stones reduce carbon footprint.

Thermal-insulation tiles control the temperature naturally.

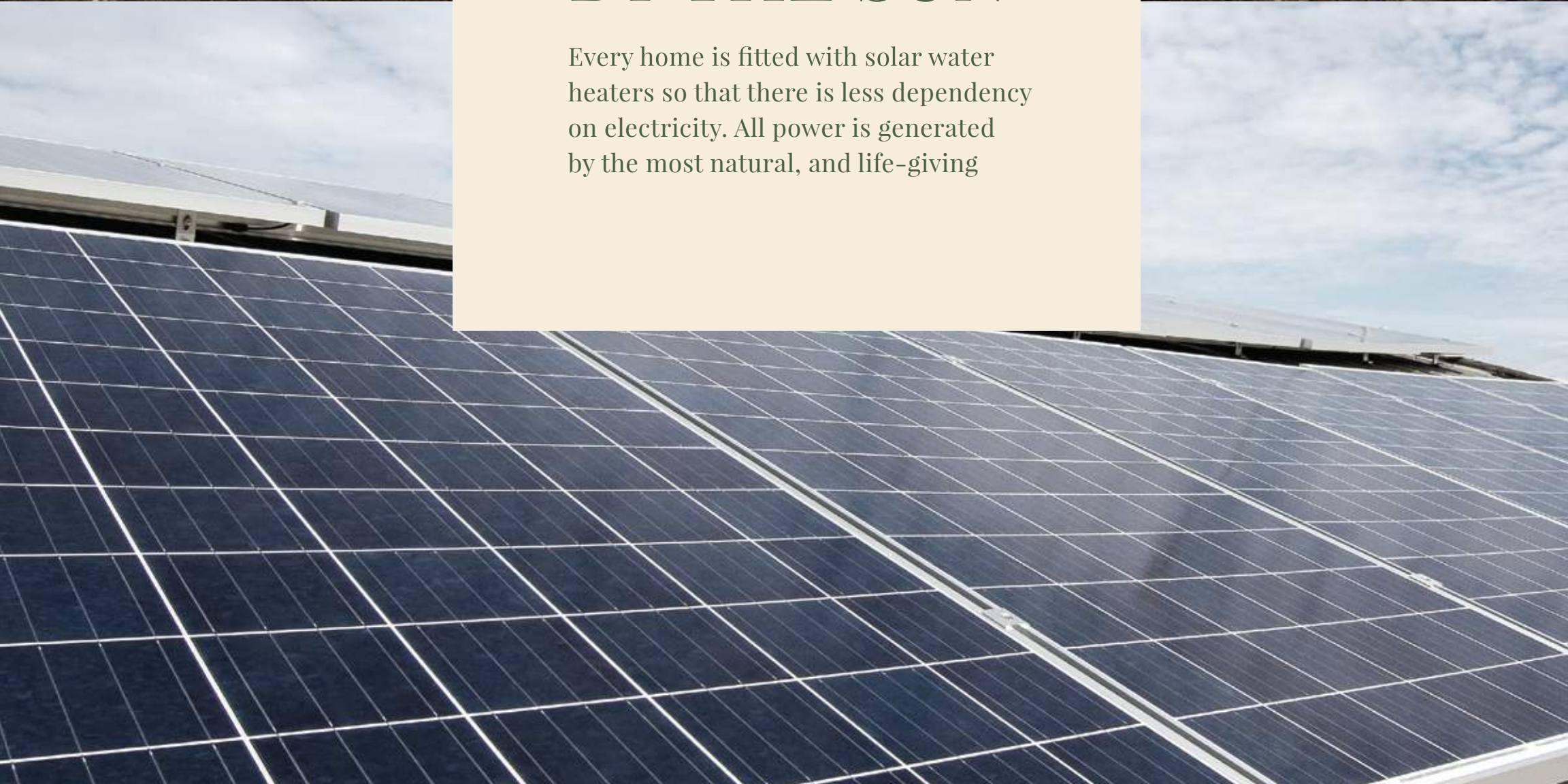
Every home has a solar water heater, and a garden.





POWERED BY THE SUN

Every home is fitted with solar water heaters so that there is less dependency on electricity. All power is generated by the most natural, and life-giving





FUELLED BY THE WIND

The roofs are fitted with wind-fed, free-spinning Turbo Ventilators, to bring you fresh and cool air, every minute of every day, with no dependency on fans, and ACs.

The background of the entire page is a grayscale image of water ripples. The ripples are concentric circles of varying sizes, creating a textured, organic pattern. The lighting is soft, highlighting the peaks and troughs of the waves.

FED BY THE RAIN

We give Earth's most precious resource the respect it deserves. With water requirement calculated at 41,310 litres, our Rainwater Harvesting and water saving fixtures reduces atleast 70% water consumption without you feeling the impact of it.

Water is recycled to create more water. Rainwater harvesting is practiced by ground recharge.

Sewage water is treated for use in the garden. Series of open wells collect rainwater.

Facilities are in place to collect storm water. Used water is treated for reuse wherever possible.

Water meters act as checks/indicators and promotes awareness.







CRADLED BY THE EARTH

All the stones at Sagano are locally sourced. They aren't just suitable to our climate, but available in many varieties, patterns, colours and textures. They are extremely durable, and environment-friendly.

Local stones do not require epoxy-based chemicals to be cut. They are also less toxic, and look better with time.

Building materials include porotherm bricks that stay cool in summer, and warm in winter.







DAINTREE

BY MANA

RERA: PRM/KA/RERA/1251/308/PR/200103/003137

Ph: 7026 11 66 11 | enquiry@manaprojects.com

Site Office Address : SY NO 128/1 and SY NO 128/2 V Kallahalli, hobli, Sarjapura, Bengaluru, Karnataka 562125

Head Office Address : Mana Projects Pvt. Ltd. No. 20/7, 3rd floor, Swamy Legato, Kadubeesanahalli, Outer Ring road, Bengaluru – 560103

DISCLAIMER:

The company does not guarantee or represent the information contained in this document; and to be used for general information only. Any interested party should verify all the details like designs, plans, specifications, facilities, features, payments schedules, terms of sales, etc., independently with the company prior to concluding any decision for buying in any of the projects.

The user of the brochure confirms that he/she has not relied on this information alone when making any booking/ purchase in any project of the company. The information, visuals, renders and creative depictions contained herein are artistic impressions, Indicative in nature and are for general information purposes only. The actual design/colour/finish/construction/landscape could undergo changes based on changes in design, layouts, materials, site conditions, etc. Any furniture paintings, or any items of personalised nature not specifically mentioned in the contract and shown in the images are only for the purpose of illustration and does not form part of the offering. Further, the renders/visuals of the area beyond the project site are artistic in nature and while every reasonable care has been taken in providing the information, under no circumstances the company or its employees, managers or representatives shall be held liable for any loss or damage, special or consequential or otherwise, arising from the use of or reliance on information provided in the brochure without verifying the same independently with the company.

Daintree is a project by BSR projects, Mana Projects Pvt Ltd is the exclusive marketing partner for BSR Projects. All the cheques and the payments to be made in the favour of "BSR Projects Daintree".

All Rights Reserved by Mana Projects Pvt Ltd.