



An ISO 9001:2009 Company

Developing India

**AMRAPALI  
GROUP**

AMRAPALI  
  
**GOLF HOMES**  
G . N O I D A



Corporate Office : C-56/40, Sector-62, Noida (near FORTIS) Ph. : 0120-4055555  
Fax : 0120-4233556 E-mail : [mkt@amrapali.in](mailto:mkt@amrapali.in) Website : [www.amrapali.in](http://www.amrapali.in)

**SMS**  
Amrapali to **56677**

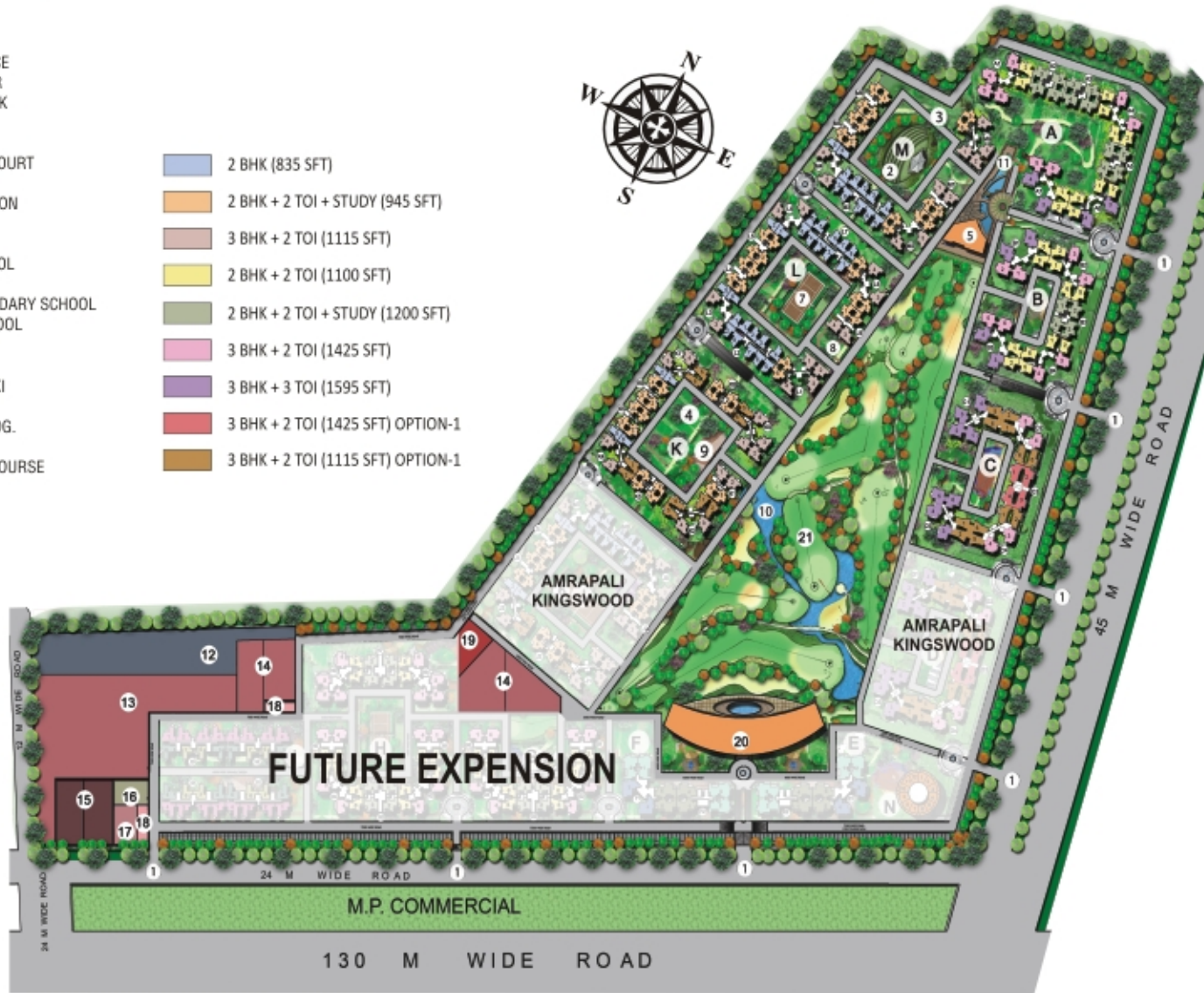
APARTMENTS • MALLS & MULTIPLEXES • SEZs • IT PARKS • HOTELS • HOSPITALS • EDUCATION • FMCG (Mum's)

# SITE LAYOUT

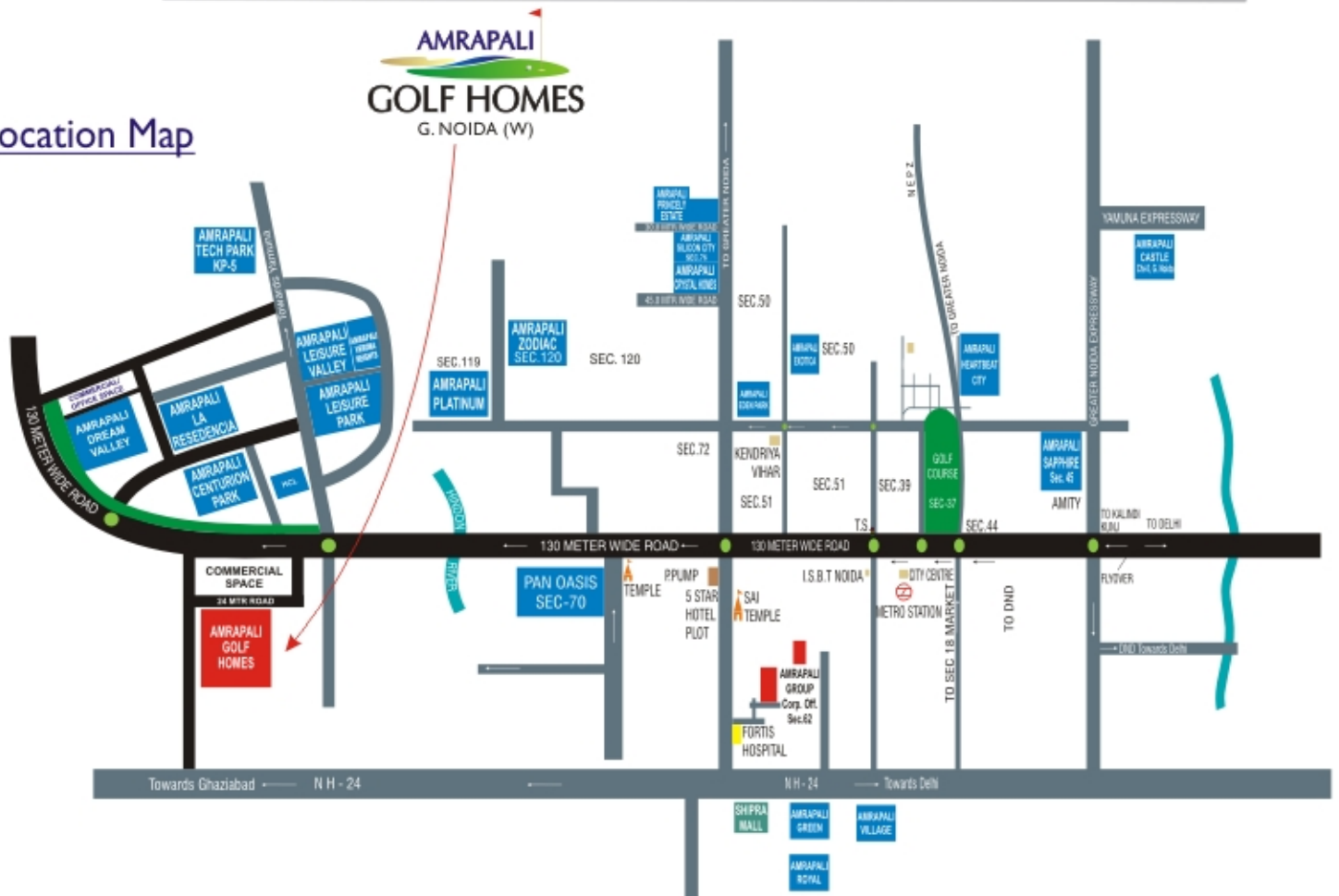
## LEGEND

1. MAIN ENTRANCE
2. AMPHITHEATER
3. JOGGING TRACK
4. LAWN
5. CLUB
6. BASKETBALL COURT
7. TENNIS COURT
8. SIT-OUT PAVILION
9. KIDS ZONE
10. WATER BODY
11. SWIMMING POOL
12. E.S.S.
13. SENIOR SECONDARY SCHOOL
14. NURSERY SCHOOL
15. DISPENSARY
16. TAXI STAND
17. POLICE CHOWKI
18. MILK BOOTH
19. RELIGIOUS BLDG.
20. GOLF CLUB
21. 9 HOLE GOLF COURSE

- 2 BHK (835 SFT)
- 2 BHK + 2 TOI + STUDY (945 SFT)
- 3 BHK + 2 TOI (1115 SFT)
- 2 BHK + 2 TOI (1100 SFT)
- 2 BHK + 2 TOI + STUDY (1200 SFT)
- 3 BHK + 2 TOI (1425 SFT)
- 3 BHK + 3 TOI (1595 SFT)
- 3 BHK + 2 TOI (1425 SFT) OPTION-1
- 3 BHK + 2 TOI (1115 SFT) OPTION-1



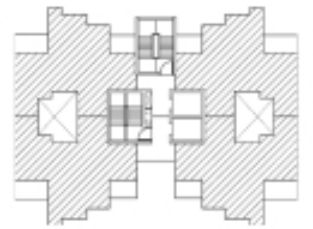
## Location Map



**2 Bedrooms + 2 Toilets**  
**OPTION - I**  
**Super Area : 835 Sq. Ft.**



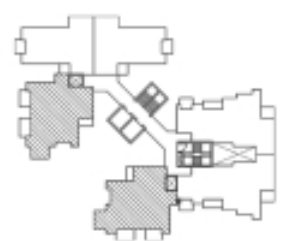
**2 Bedrooms + 2 Toilets + Study**  
**OPTION - I**  
**Super Area : 945 Sq. Ft.**



**3 Bedrooms + 2 Toilets**  
**Option - I**  
**Super Area : 1115 Sq. Ft.**



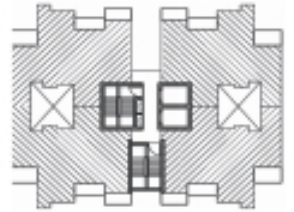
**3 Bedrooms + 2 Toilets**  
**Super Area : 1115 Sq. Ft.**



**2 Bedrooms + 2 Toilets**  
**Super Area : 1100 Sq. Ft.**



**2 Bedrooms + 2 Toilets + Study**  
**Super Area : 1200 Sq. Ft.**



**3 Bedrooms + 2 Toilets**  
**Super Area : 1425 Sq. Ft.**



**3 Bedrooms + 3 Toilets**  
**Super Area : 1595 Sq. Ft.**

