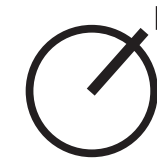


unitech[®]VERVE
modern apartments

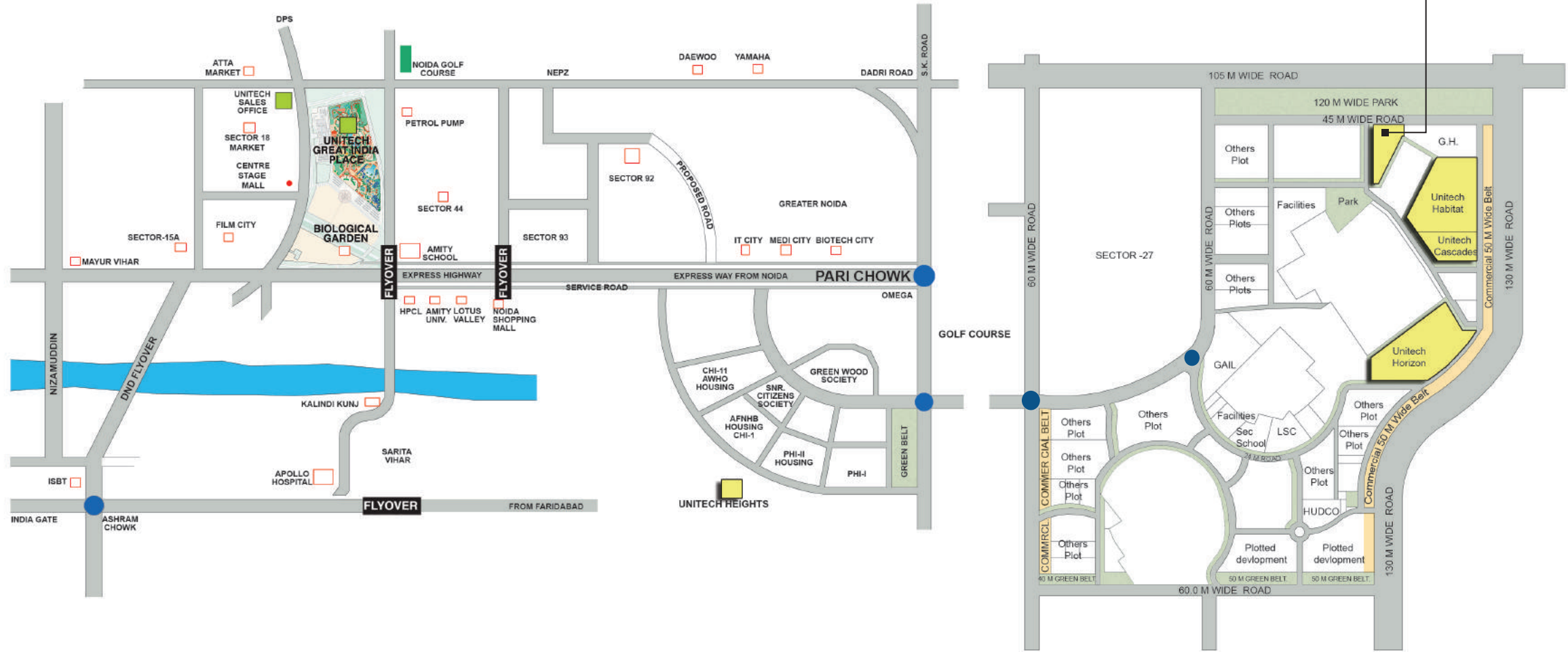


EVEN THE MUNDANE FEELS EXOTIC

LOCATION MAP



unitechVERVE[®]
modern apartments



SECTOR PI 1 & 2

120.0 M. WIDE GREEN BELT

45.0 M. WIDE ROAD

OTHER'S PROPERTY



LEGEND

- 1. ENTRY DROP OFF
- 2. GATEHOUSE
- 3. PARKING
- 4. CLUBHOUSE DROP-OFF
- 5. CHILDREN'S PLAY LAWN
- 6. TOP OF BERM +2.0M.
- 7. TOP OF BERM +0.8M
- 8. EMERGENCY VEHICLE ACCESS ROAD
- 9. STAIR TOWER
- 10. ENTRY WALKS
- 11. ALM ROW
- 12. LAWN
- 13. AMPHITHEATRE
- 14. STAGE
- 15. OPEN AIR JACUZZI
- 16. SWIMMING POOL
- 17. KID'S POOL
- 18. POOL DECK
- 19. STONE SLAB BENCH
- 20. FOUNTAIN
- 21. GAMES TABLE
- 22. DECOMPOSED GRANITE INDER TREE MATRIX
- 23. DECK
- 24. MAIN LAWN
- 25. TENNIS COURT

24.0 M. WIDE ROAD

OTHER'S PROPERTY

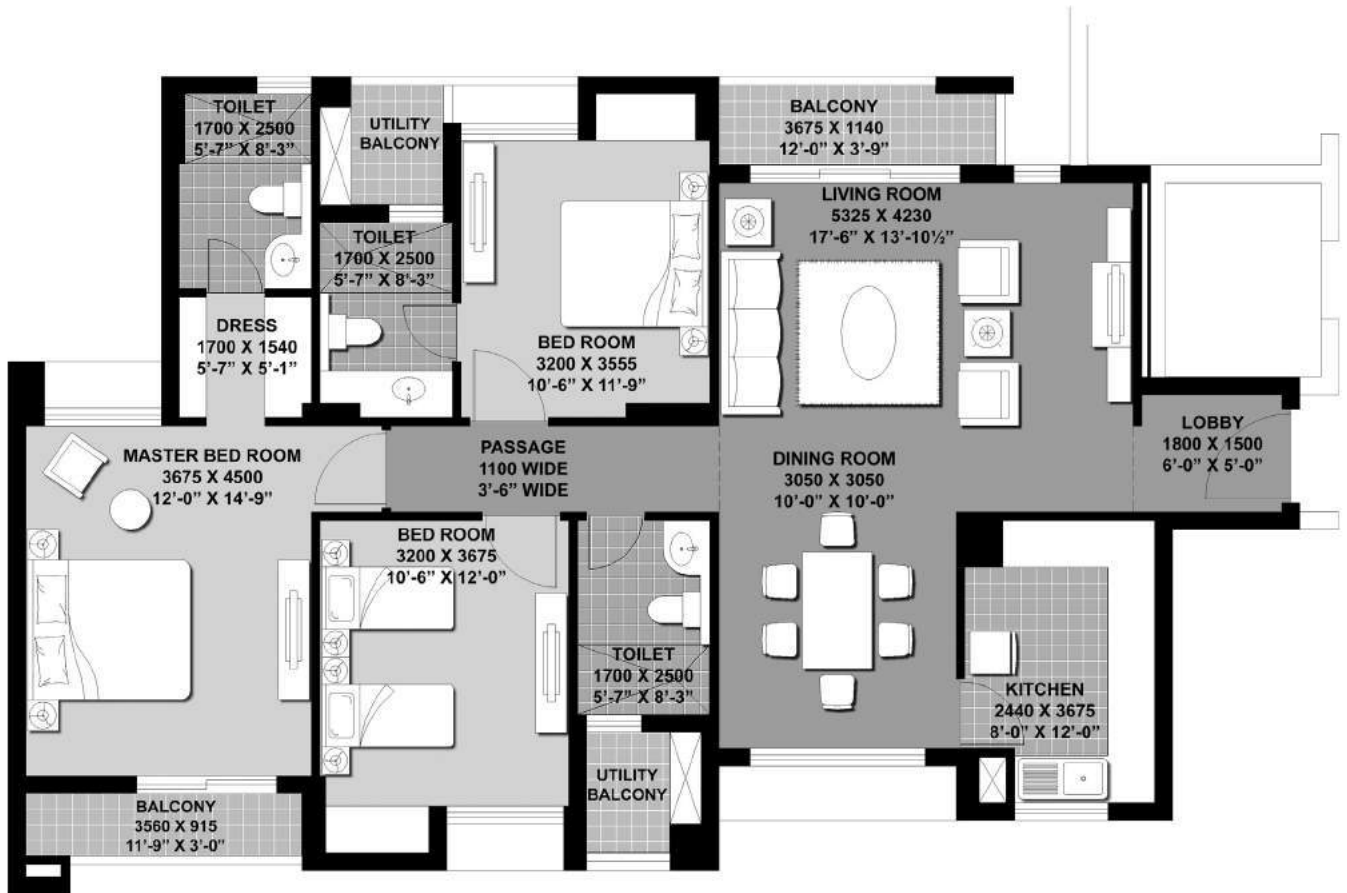
AERIAL VIEW



DAY VIEW



Type A - 3BR3T



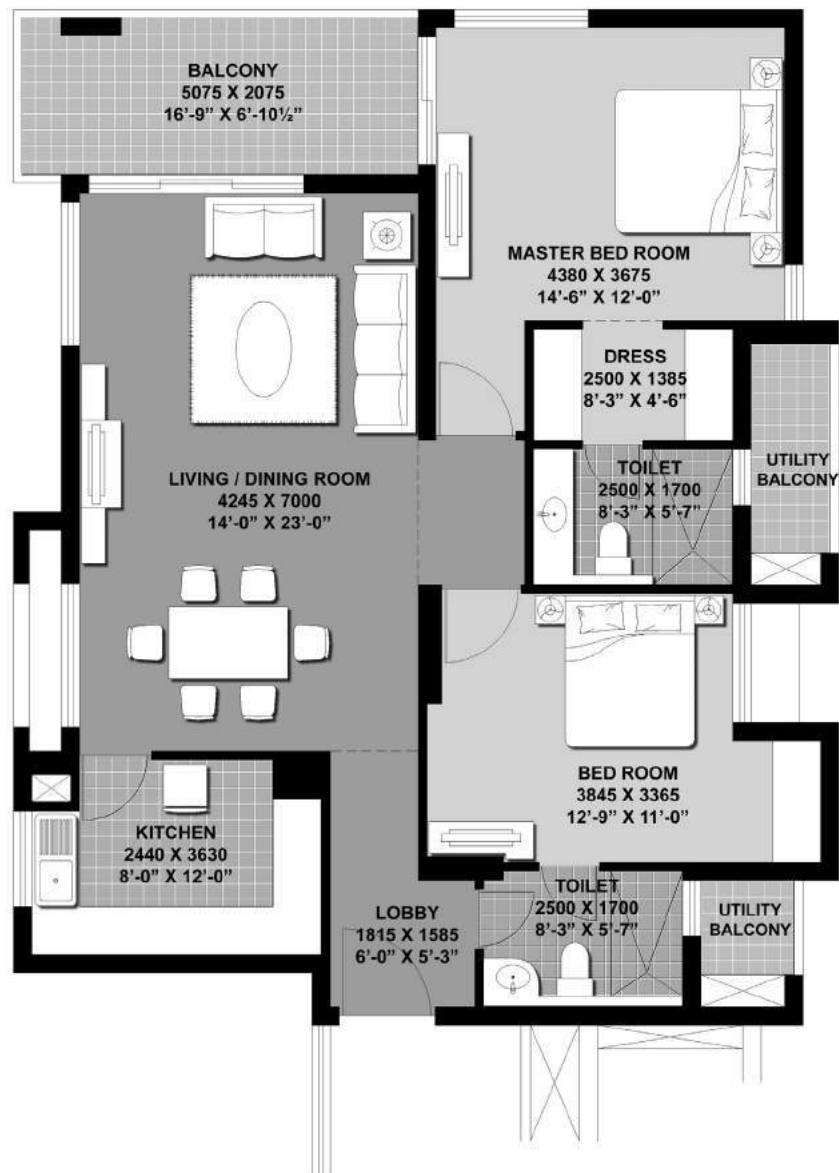
1785 Sq.Ft. (165.88 Sq.M.)

- T1 - G02-1802, G01-1801
- T2 - G02-2102, G01-2101
- T3 - G02-2102, G01-2101
- T4 - G02-2302, G01-2301
- T5 - G02-2202, G01-2201
- T6 - G02-2402, G01-2401

Floor No. 13 or Unit No. 1303 are not included in this project.



Type B - 2BR2T



1588 Sq.Ft. (147.54 Sq.M.)

T1 - 103, 403-703, 1003-1403

T2 - 103-203, 503-903, 1203-1703

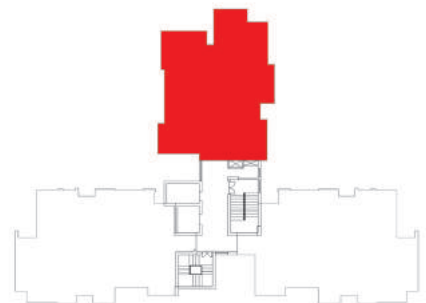
T3 - 103-203, 503-903, 1203-1703

T4 - 103-403, 703-1103, 1503-1903

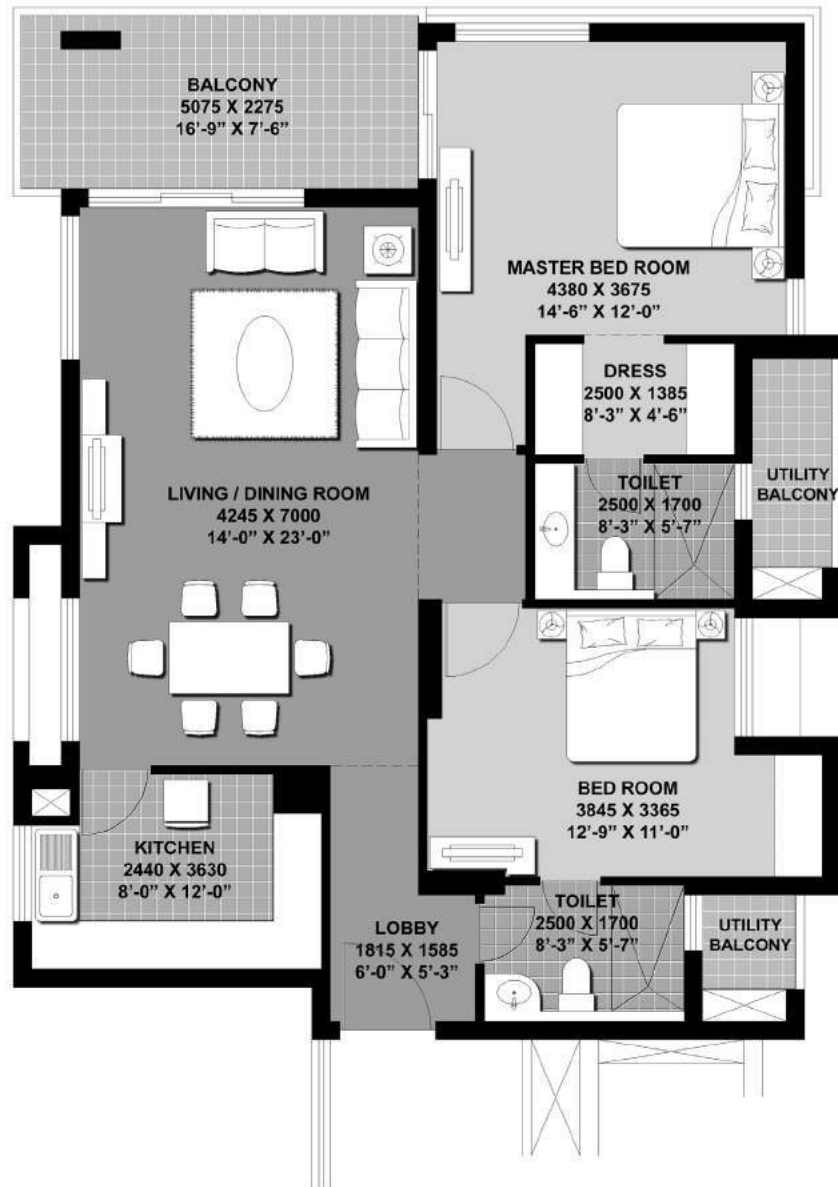
T5 - 103-303, 603-1003, 1403-1803

T6 - 103-503, 803-1203, 1603-2003

Floor No. 13 or Unit No. 1303 are not included in this project.



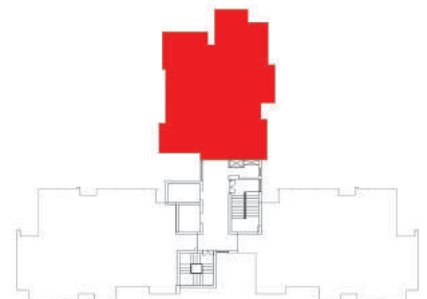
Type B1 - 2BR2T



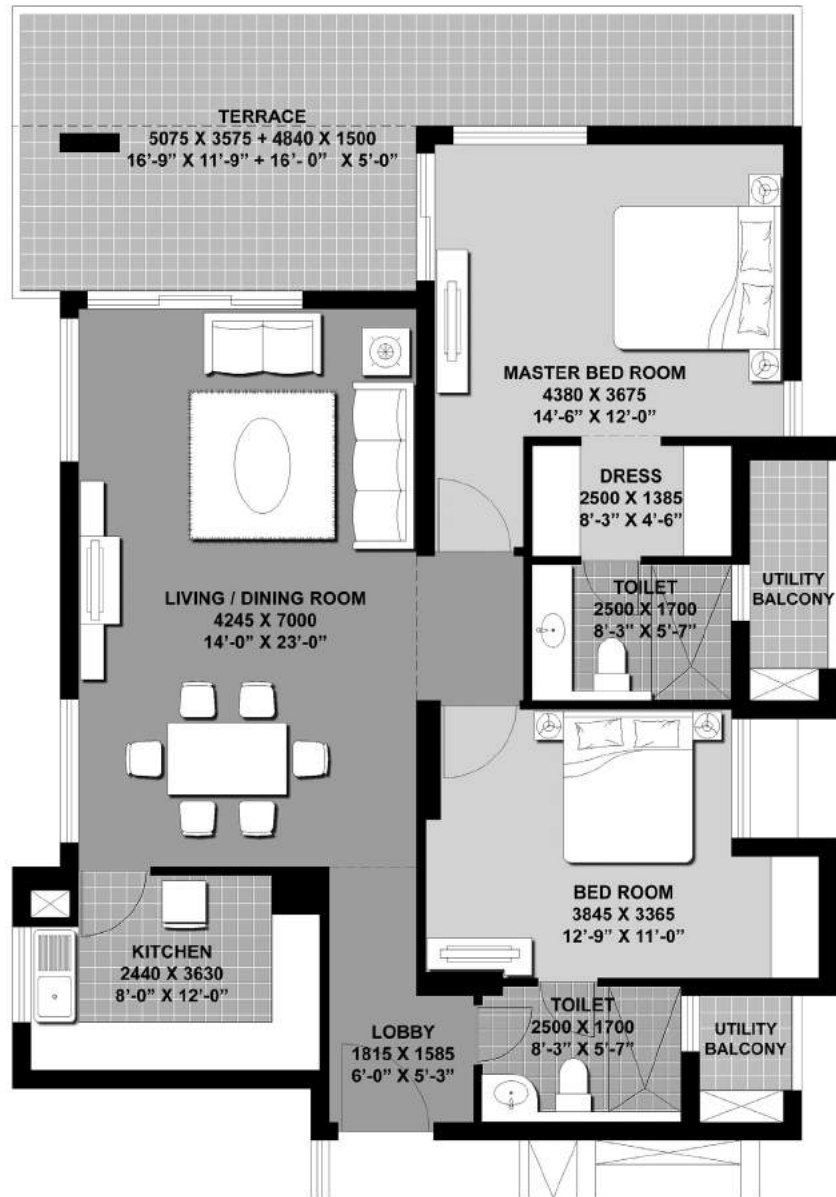
1619 Sq.Ft. (150.48 Sq.M.)

- T1 - 203-303, 803-903, 1503-1603**
- T2 - 303-403, 1003-1103, 1803-1903**
- T3 - 303-403, 1003-1103, 1803-1903**
- T4 - 503-603, 1203-1403, 2003-2103**
- T5 - 403-503, 1103-1203, 1903-2003**
- T6 - 603-703, 1403-1503, 2103-2203**

Floor No. 13 or Unit No. 1303 are not included in this project.



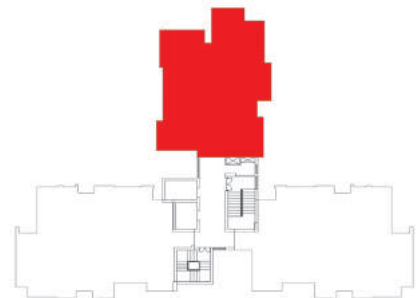
Type B2 - 2BR2T



1756 Sq.Ft. (163.22 Sq.M.)

- T1 - G03
- T2 - G03
- T3 - G03
- T4 - G03
- T5 - G03
- T6 - G03

Floor No. 13 or Unit No. 1303 are not included in this project.



SPECIFICATIONS

Wall finish

Internal: living/dining: Acrylic emulsion paint/ceiling in distemper

External: combination of stone & textured paints

Floorings

Living/dining: Imported Mable

Bedrooms: laminated wood flooring

Kitchen

Fully fitted modular kitchen with refrigerator, oven, hob and chimney

Platform: Granite/Marble counter with twin bowl stainless steel sink, drain board with cp fittings

Flooring: ceramic tiles

Dado: Granite/marble above counter/ceramic tiles on non-counter walls upto 1500mm above floor

Toilets

Flooring: ceramic tiles floors

Dado: ceramic tiles upto ceiling

Fittings: Granite/marble counter, white ceramic fixtures and cp fittings, geysers

Doors

Seasoned hardwood frames with European style skin doors

Windows

uPVC windows/ powder coated aluminium windows

Power backup

100%

Electrical

Copper wiring and MCB

Security

Door phones

All floor plans, sitemap, specifications, amenities, facilities and perspective views are tentative in nature and are subject to revision.

Facilities

100% power back up

24 x 7 security

Green Area

Children's play lawn

Lawn

Amphitheatre

Fountain

Entry Walks

Building

Sufficient car parking facility per apartment

Earthquake resistant rcc framed construction

Club

Swimming Pool

Kid's Pool

Gymnasium

Tennis court

T.V. Lounge

Children's Room

FOR MORE INFORMATION CONTACT: MKTG. OFFICE (GURGAON): UNITECH LIMITED, UNITECH SIGNATURE TOWERS, LEVEL 1, SOUTH CITY - I, NH-8, GURGAON-122
001, HARYANA, INDIA. TEL: (0124) 408 6677, 408 2020. FAX: (0124) 408 3355. SALES OFFICE (NOIDA): UNITECH LIMITED, P-7, SECTOR -18, NOIDA -
201 301, UTTAR PRADESH, INDIA. TEL: (0120) 251 3780, 098715 45858. FAX: (0120) 434 8906. SALES OFFICE (DELHI): 6, COMMUNITY CENTRE, SAKET,
NEW DELHI - 110 017, INDIA. TEL: (011) 4166 4040. FAX: (011) 2685 7338. TOLL FREE NO.

VERVE@UNITECHGROUP.COM

1800 180 6677. OFFICES OPEN 7 DAYS A WEEK.

WWW.UNITECHGROUP.COM

unitech **VERVE**[®]
modern apartments