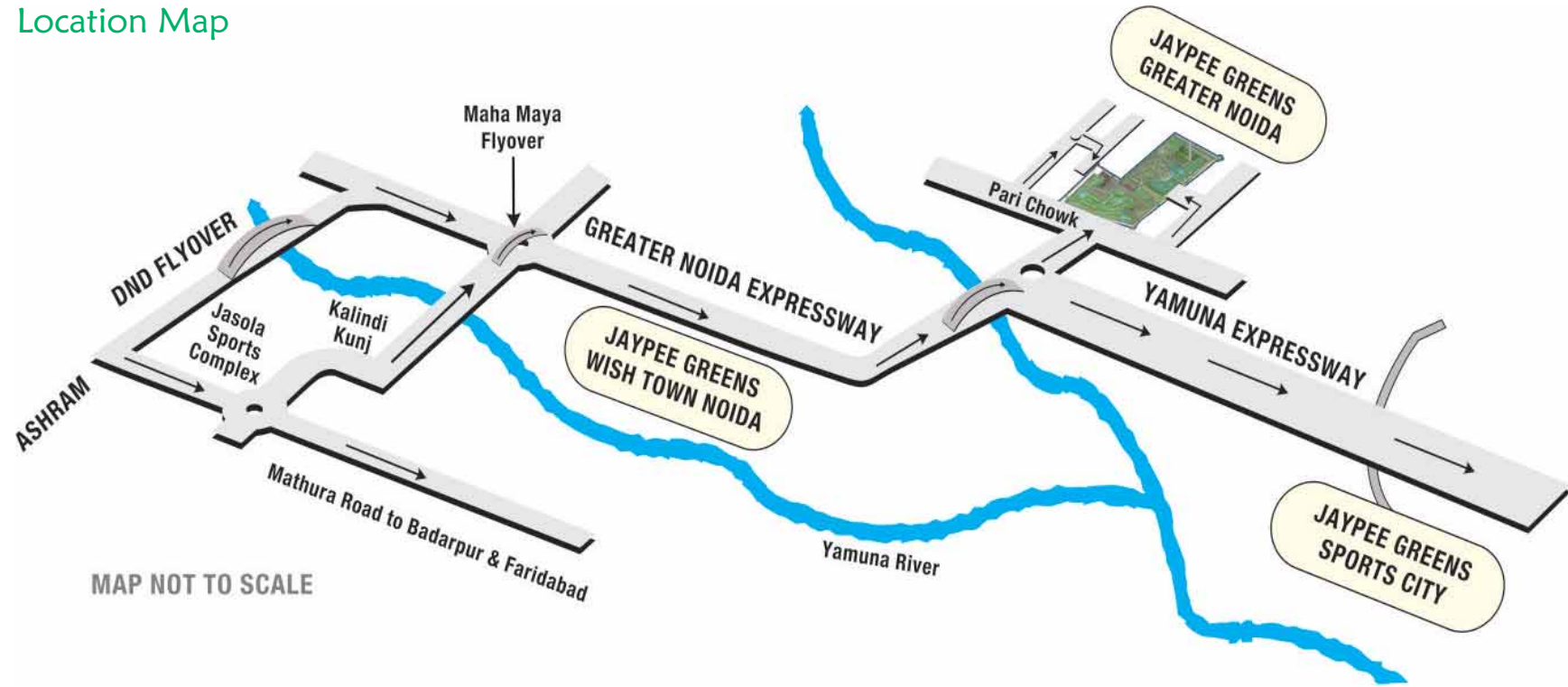


Location Map



Jaypee Greens
G-Block, Surajpur Kasna Road, Greater Noida-201306 (U.P.), India
Tel: +91 120 2332172 , Toll Free No.: 1800-180-9900(National)
www.jaypeegreens.com

This brochure is conceptual and not a legal offer and gives only a bird's eye view of the project. The contents in this brochure, including the buildings, elevations, area, designs, layouts, specifications, etc., are tentative and are merely indicative in nature and are subject to variations and modifications by Jaypee Greens or the competent authorities, statutory and otherwise. 1Sq.m = 10.764 Sq. Ft.

D. O. P. 19/03/2016

Star Court



Actual view of Star Court Towers

STAR COURT

“the stars which stand as thick as dew drops on the fields of heaven.”

Jaypee Greens brings to you an unparalleled multi generational gated community in a secure environment spread over 183 hectares of land. Its about good life; it’s about living in an environment which caters for everything the urban soul cherishes.

Jaypee Greens - Star Court Apartments, the luxurious homes that assures well-being and happiness in modern lifestyle, they are tuned to the senses, needs and desires of the resident and offer uninterrupted calm and serenity.

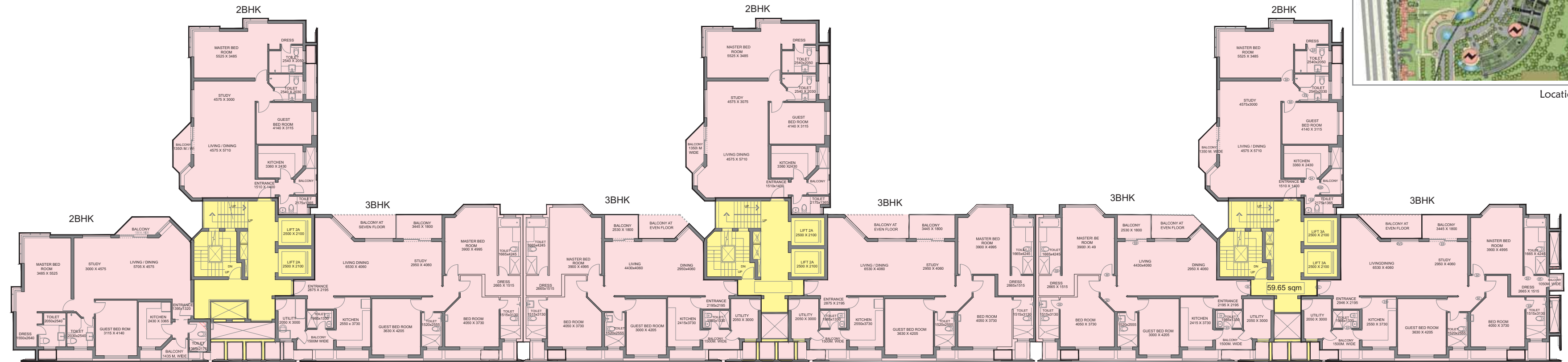
These Ground+ 19 storeys’s high apartment towers consist of:

- a) Studio apartment of 42.05 Sq. mt.(452.67 Sq.ft.) to 42.48 Sq. mt.(457.25 Sq.ft) approx.
- b) 2 BHK apartment of 144.03 Sq. mt. to 201.91 Sq. mt. approx.
- c) 3 BHK apartment of 195.70 Sq. mt. to 225.60 Sq. mt. approx.

These apartments offer expansive views of the 18 hole Greg Norman designed championship golf course and landscaped greens and have generously proportioned spaces adapted to modern needs. The traditional format of separating the different domestic functions into lounge, dining etc is respected but at the same time integrated. The result is a special atmosphere, set off by the interplay between the materials used, the spatial proportions and light.

As a privileged resident of Star Court Apartments, one can enjoy the facilities of a well-equipped Social Club which has amenities like a well equipped health club, swimming pool, play area for kids etc





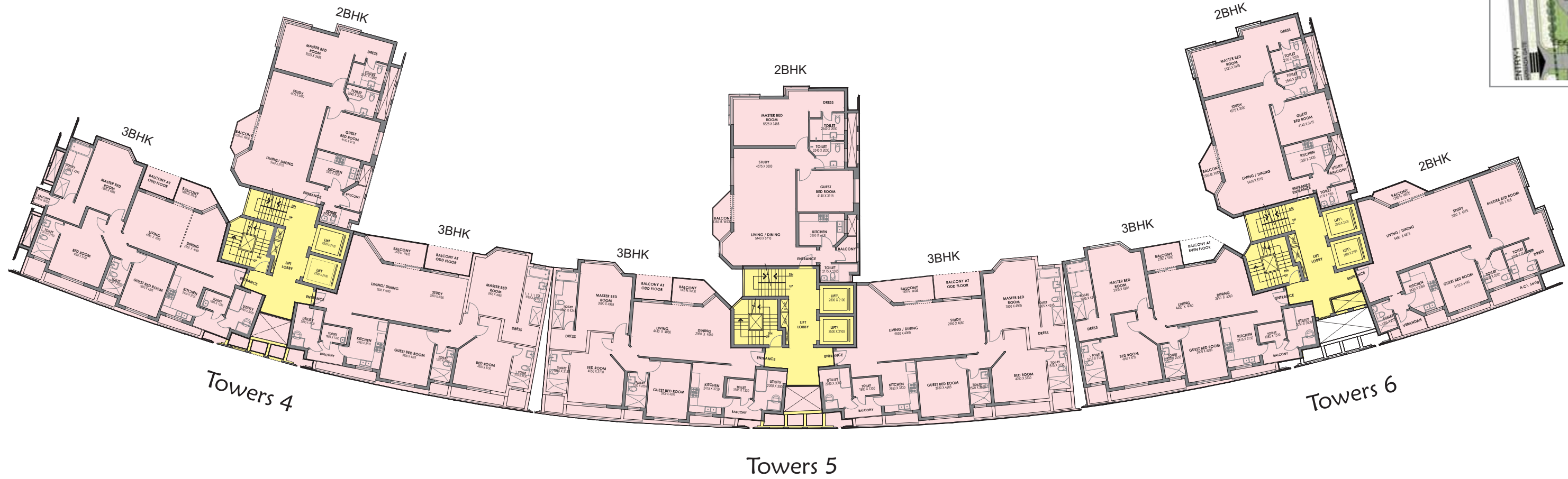
Location Details

Towers 1

Towers 2

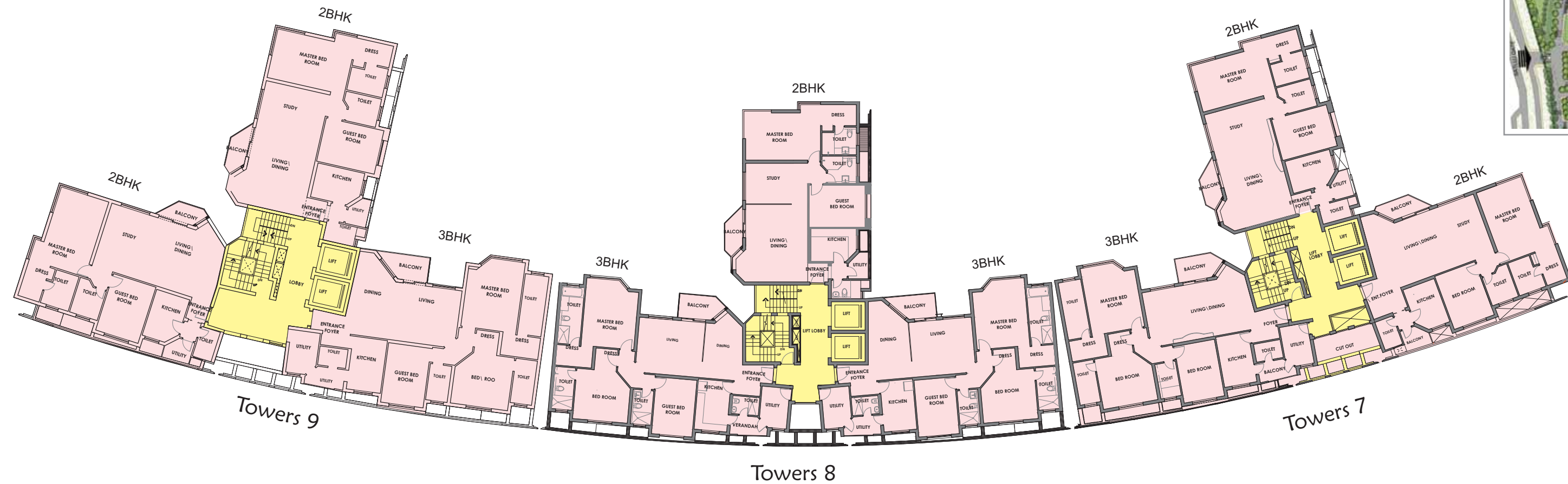
Towers 3

Typical Floor Plans - Towers 1, 2 & 3



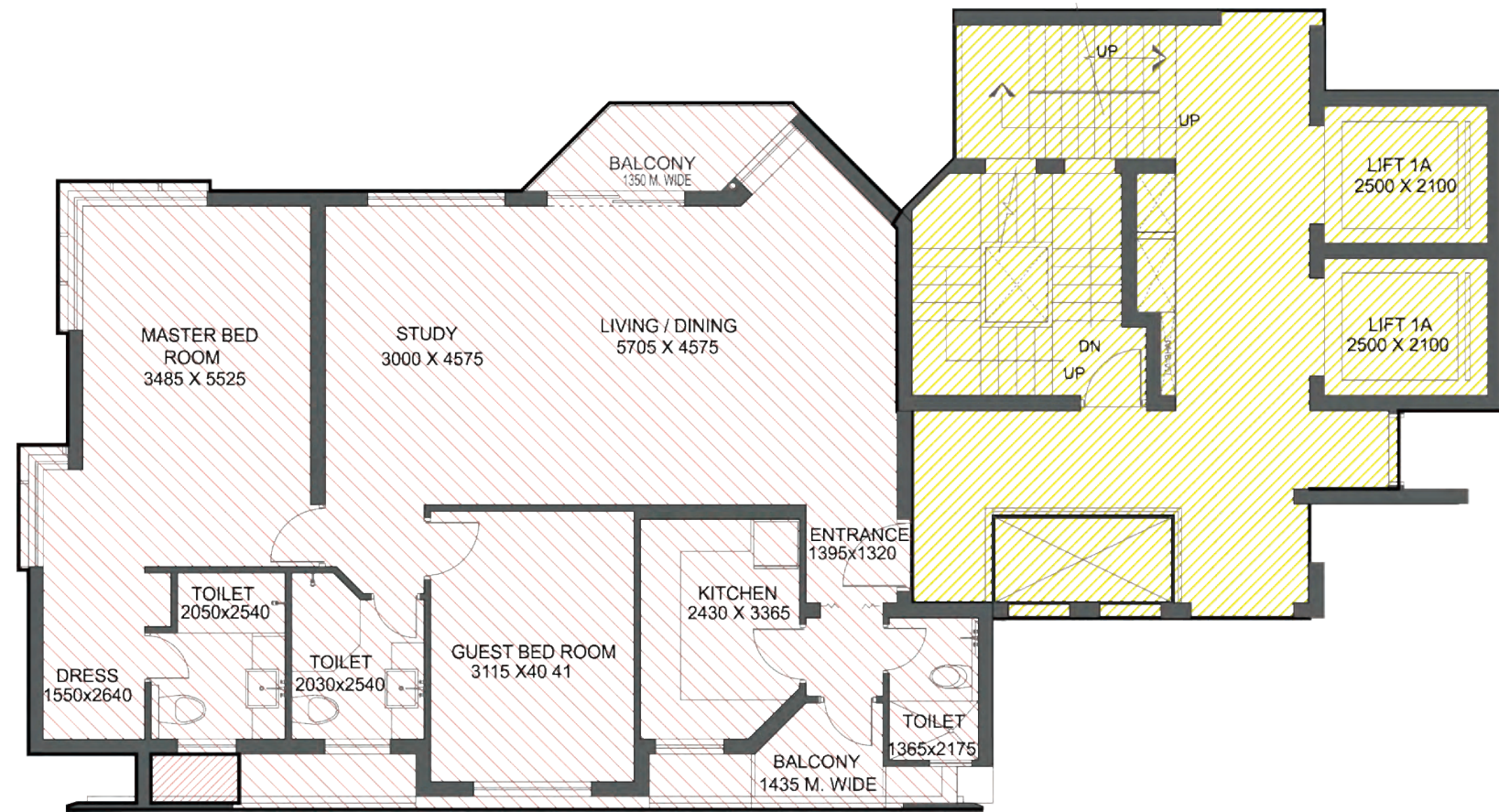
Location Details

Typical Floor Plans - Towers 4, 5 & 6

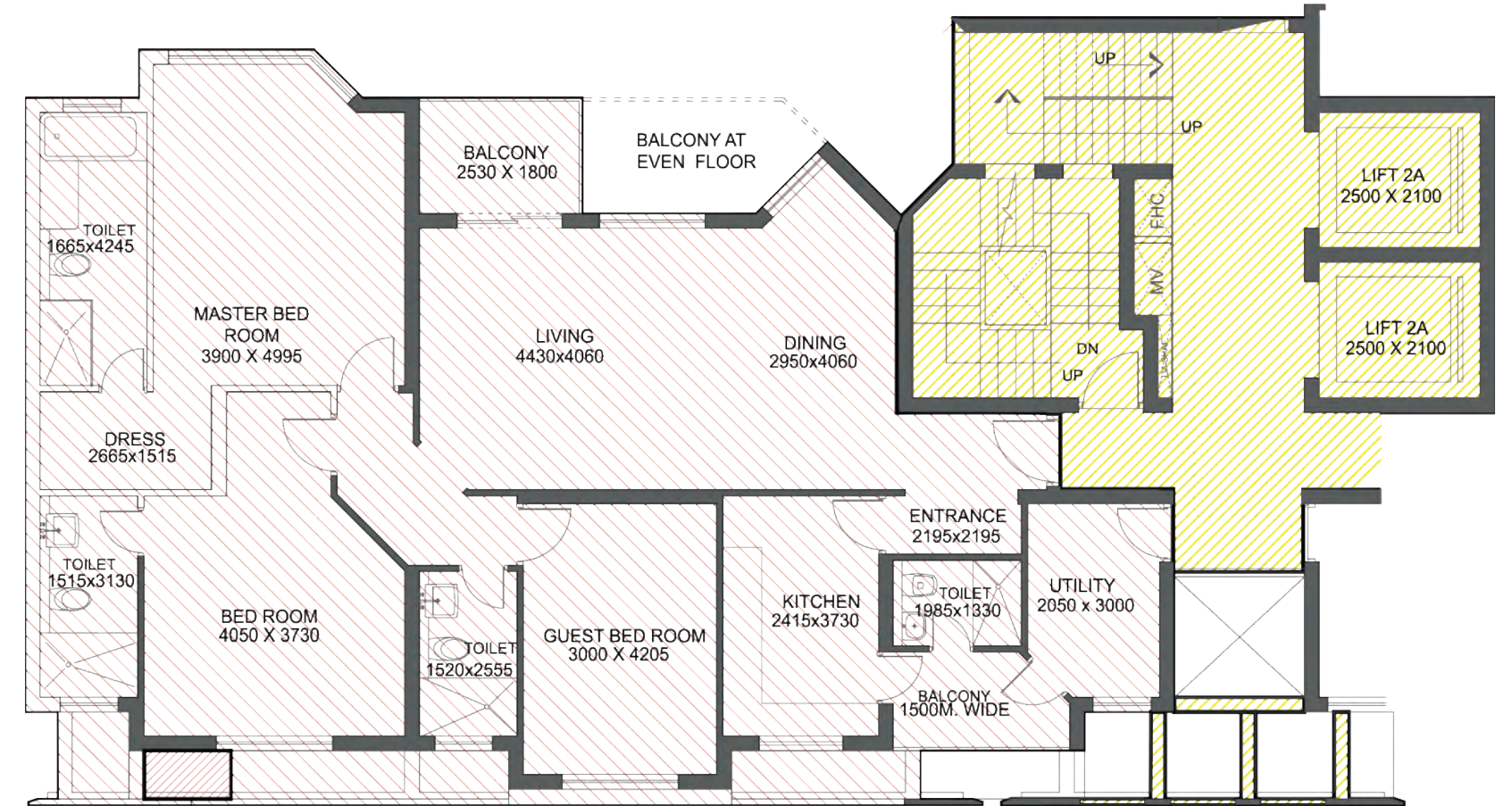


Location Details

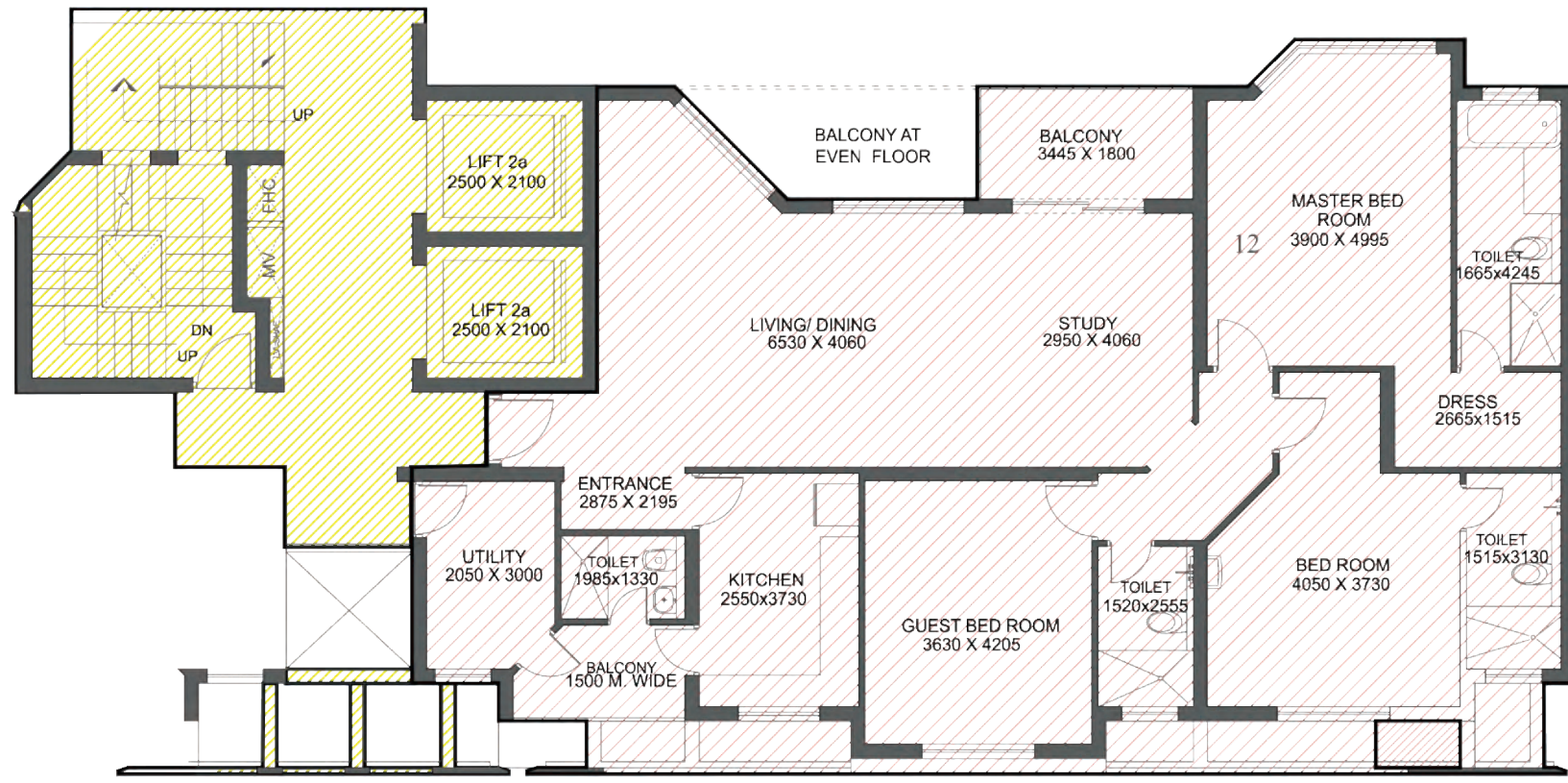
Typical Floor Plans - Towers 7, 8 & 9



Typical 2 BHK

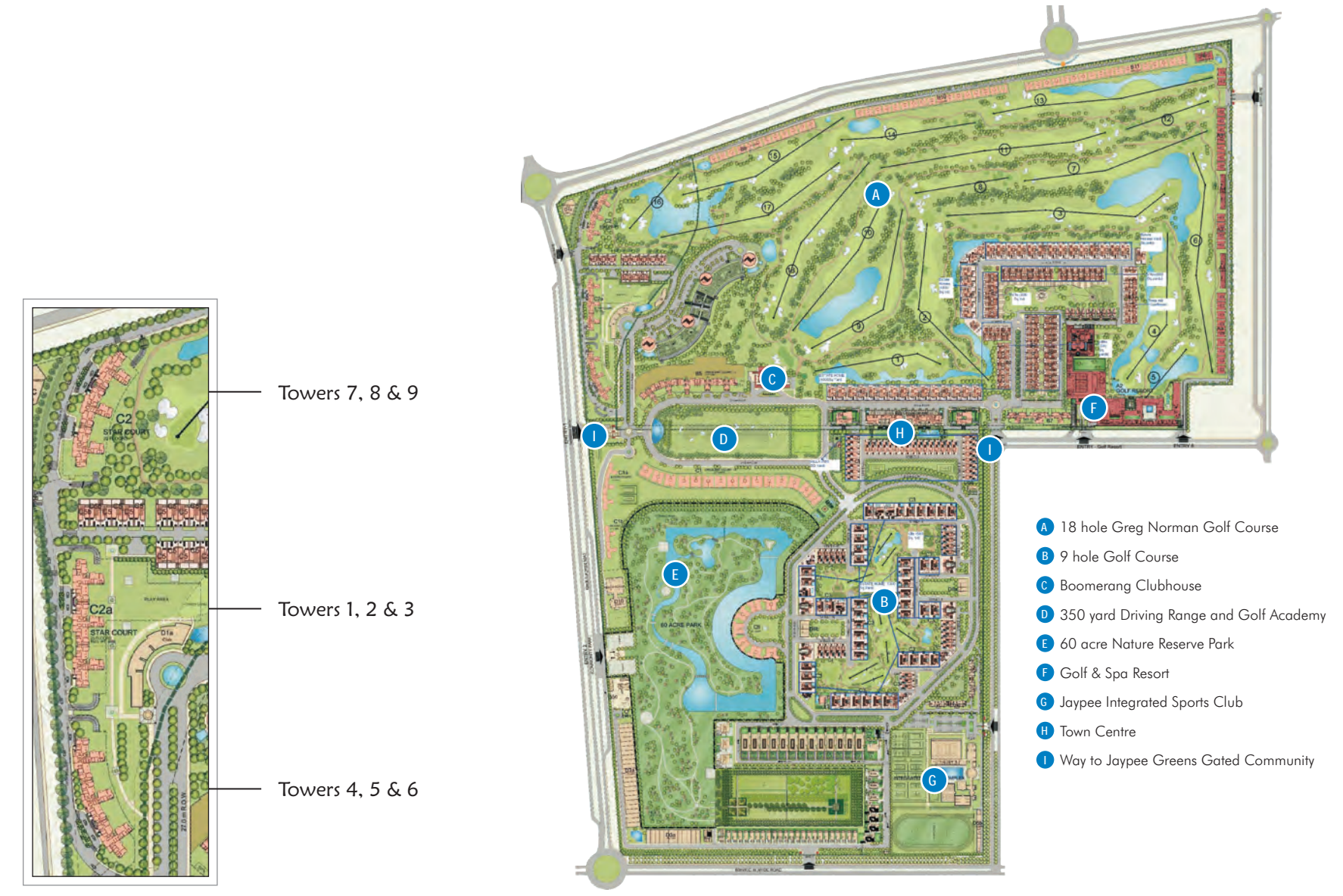


Typical 3 BHK Type-1



Typical 3 BHK Type-II

Master Plan



Standard Specifications for Star Court Apartments

Structure	Earthquake Resistant RCC frame structure with masonry infill /RCC wall
Floors	
Living/ Dining / Foyer	Tile Flooring
Bedroom	Laminated Flooring
Workers/Utility Room	Ceramic Tiles
Balcony	Antiskid Ceramic Tile
Main Staircase	Kota Stone
FireEscape Staircase	Kota Stone
Lift Lobby	Vitrified Tiles
Walls	
External	Texture Paint
Internal	Acrylic Emulsion/Texture Paint on POP
Lift Lobby walls	Vitrified Tiles
Ceilings	Paint on POP
Doors/Windows	
Internal	HDFB Skin Doors
Main Door	Paneled Doors
Wardrobes	Pre - laminated board modular wardrobes
Bathrooms	<input type="checkbox"/> Fixtures and fittings <input type="checkbox"/> Tiles on flooring and on walls <input type="checkbox"/> Water Closet, Shower area
Kitchen	<input type="checkbox"/> Modular Kitchen, Counter, fixtures and fittings <input type="checkbox"/> Tiles on flooring and on walls as applicable
Utilities and Facilities	
Security	<input type="checkbox"/> Door Phones <input type="checkbox"/> 24 Hour manned security on entrance gates
Air - conditioning	Individual Split
Ventilation	Exhaust fans in kitchen and bathrooms
Landscaping	Landscaped common areas to preserve and enhance the natural characteristics of site
Water Supply	Water Supply through underground lines/overhead tanks
Sewage Water	Soiled water drainage into main sewer outside property
Storm Drainage	Storm water drainage system integrated for rainwater harvesting
Fire Protection	Fire detection / sprinkler system as per fire safety norms
Main Electrical Supply	Electrical wiring in concealed conduits with modular switches and power back up
Telephone/Data	<input type="checkbox"/> Telephone cable pre-wired into all rooms <input type="checkbox"/> Data Cable as Per Design
Services	Maintenance of common area on chargeable basis

Notes and Remarks:

1. Brands and makes are indicative only. Actuals will be of equivalent of make and quality as per availability at the time of execution.
2. Wood being natural materials has inherent characteristics of colour and grain variations.
3. All floor plans, layout plans and specifications are indicative and are subject to change as decided by the company or by a competent authority
4. In the absence of availability of imported materials, equivalent quality Indian substitutes will be used.
5. All works shall be carried out as per standard practice.
6. All works shall be executed as per the standard architectural design and details worked out by our Project Architects.