



**MONT
VERT[®]**
AXIS

OFFICES @ CHANDANI CHOWK, PUNE

PREMIUM SHOWROOMS

**TAKE THE HIGHER ROAD
TO SUCCESS.**

www.MontVertHomes.com

Mont Vert Axis offers premium showrooms and office spaces to suit your needs. A grand entrance lobby, high ceilings, a seating lounge on every floor, common business centre with conference rooms & meeting rooms, unwind zone and professionally maintained common areas are some of the other highlights of the project.

With an eye-pleasing view of green on one side and an impressive view of the richness of the city on the other, Mont Vert Axis will be an impressive landmark. Mont Vert Axis is a high-rise commercial building, well connected to NH4, a multi-level flyover at Chandani Chowk, upcoming metro station, a 60 meter wide National Highway (Pune to Dighi Port) is sure to present itself as an ultimate office destination.



Ideal for any Retail Store, Mont Vert axis offers premium retail showroom space for your desired business. With its excellent visibility, you are sure to attract your customer's attention whether it's a Bank, Restaurant, supermarket, boutique, E-commerce store, or a medical store thanks to the 14 ft tall shop height. What's more, is that we make sure your business never stops running with the 100% Power Backup and other facilities made specifically keeping your future prospects in mind.

In front of Mont Vert Axis, is a calming touch of greenery along with the beautiful city view on the other side. Amazing convenience is guaranteed with your retail showrooms being connected to NH-4 and a prime location of Chandani Chowk's multi-layered flyover, upcoming metro station, and other important landmarks.



RETAIL SHOWROOM-FEATURES:

- ▶ 14ft clear height
- ▶ Impressive glass facade
- ▶ 100% Power Backup
- ▶ 200 ft wide road
- ▶ Great Elevation
- ▶ Excellent frontage & Visibility

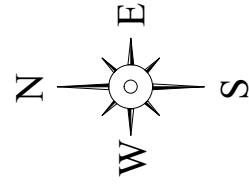
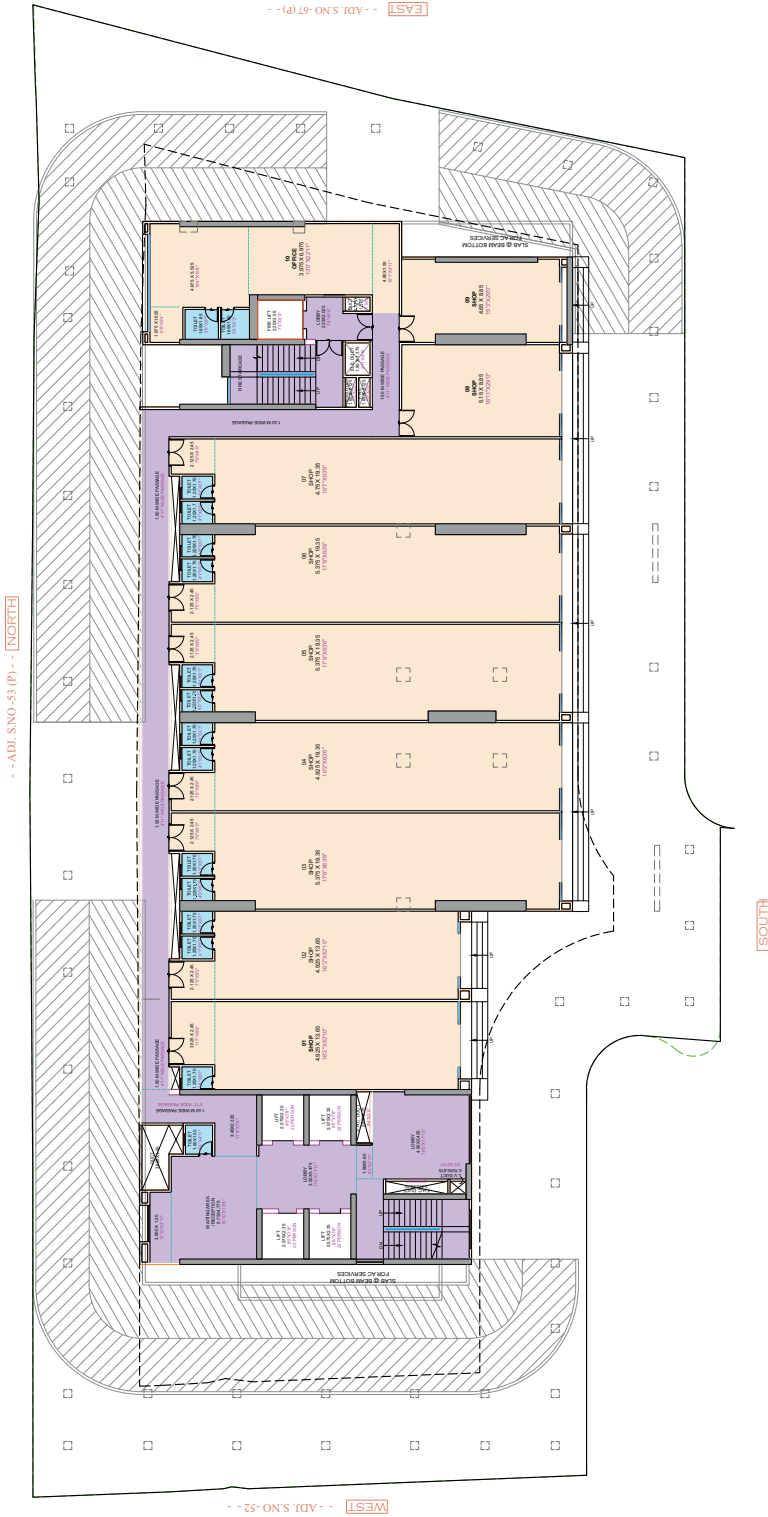
▶ IDEAL FOR:

Banks | Restaurant | Super Market | Lifestyle outlets

Boutiques | Convenience Stores | E-Commerce Stores | Medical Stores

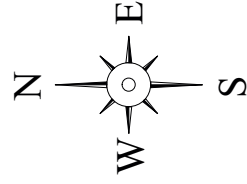
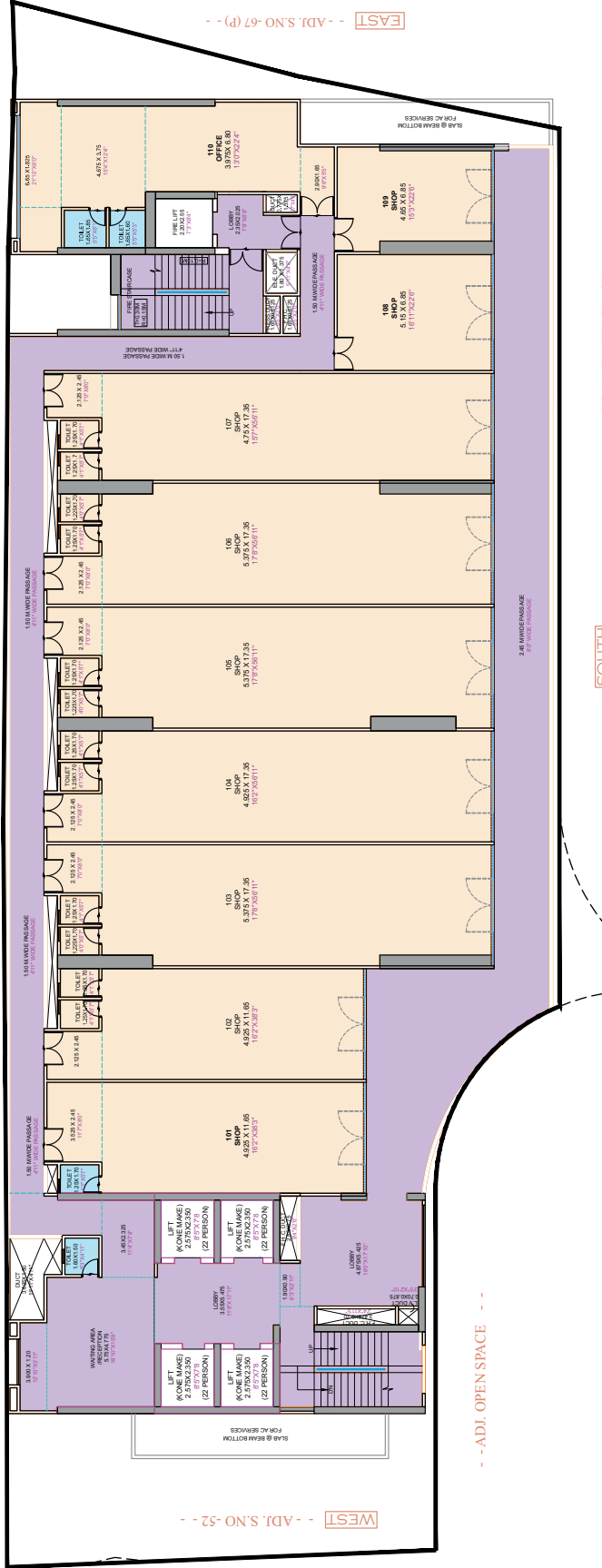


UPPER GROUND FLOOR



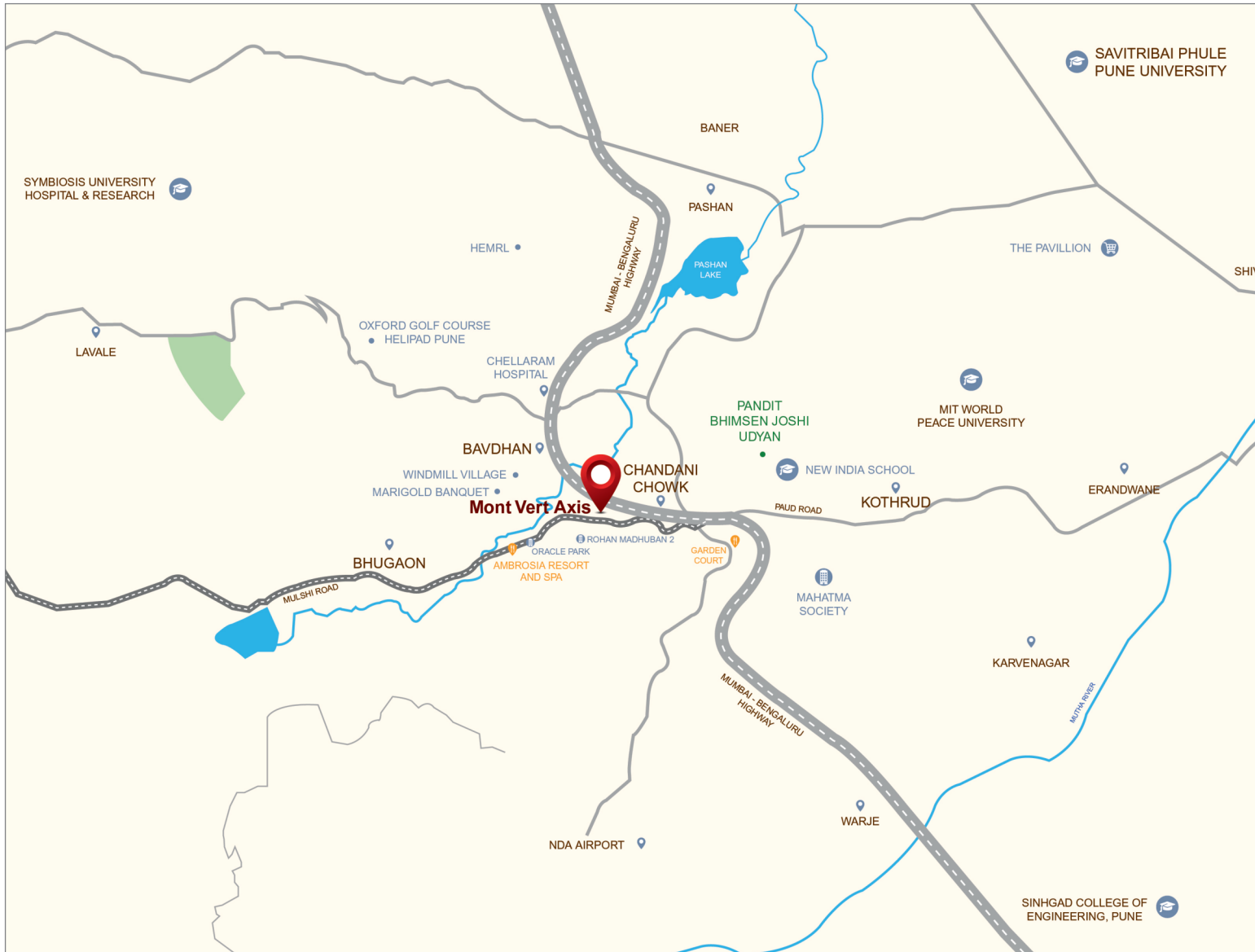
RERA CARPET AREA STATEMENT		
SHOP NO.	SHOP CARPET SQ.M.	SHOP CARPET SQ.FT.
01	79.04	850.79
02	78.19	841.64
03,06,05	114.93	1237.11
04	106.27	1143.89
07	102.45	1102.77
08	46.17	496.97
09	41.74	449.29
OFFICE-10	71.48	769.41
TOTAL CARPET AREA/FL.	870.13	9366.08
BACK SIDE COMMON PASSAGE AREA= 91.66 SQ.M. / 985.98 SQ.FT.		
COMMON WAITING AREA= 43.12 SQ.M. / 464.14 SQ.FT.		

1st FLOOR



RERA CARPET AREA STATEMENT.			
SHOP NO.	SHOP CARPET SQ.M.	SHOP CARPET SQ.FT.	
101	69.19	744.76	
102	68.34	735.61	
103,105,106	104.18	1121.39	
104	96.42	1037.86	
107	92.96	1000.62	
108	35.87	386.10	
109	32.39	348.65	
OFFICE 110	68.19	734.00	
TOTAL CARPET AREA / FL.	775.90	8351.79	
FRONT SIDE COMMON PASSAGE AREA= 139.88 SQ.M. / 1505.67 SQ.FT.			
BACK SIDE COMMON PASSAGE AREA= 91.66 SQ.M. / 985.98 SQ.FT.			
COMMON WAITING AREA= 43.40 SQ.M. / 467.16 SQ.FT.			

LOCATION MAP



Location convenience

Mumbai-Bengaluru Highway - 700 m
Bhugaon - 2.6 km
Kothrud - 3.9 km
Karve Nagar - 6.8 km
Pashan - 7.8 km

Deccan - 8.2 km
S. B. Road - 9.5 km
Baner - 9.2 km
Shivajinagar - 12.2 km
Hinjawadi - 15 km



LUXURY HOMES

Site: S. No.: 53, Hissa 13/B/2, 3, 5, 6, 7 part, Bavdhan, Pune - 411 021

axisbavdhan@gmail.com | MontVertHomes.com

Call: 9371000700 | 9922966399



MahaRERA Registration No.: P52100032943 Available at
Website: <http://maharera.mahaonline.gov.in>

Execution partner



EKATVA
ASSOCIATES
be together. win together.

Disclaimer - The intent of this brochure/leaflet is to provide information about the project. By accepting this brochure / leaflet, you have agreed that your purchase decision will be made only after satisfactorily examining and understanding the entire project. Its relevant documents including but not limited to examining the sanctioned plans, permissions, property title, amenities, specifications, FSI statement, phase wise development plan, project location, agreement, possession date etc. A copy of detailed sanctioned plans and other documents are available for reference in our corporate office. Images shown are artistic conceptual impressions upon full completion of building and may differ from the final product.

