



# HILLCREST

---

3 & 4 BHK Premium Homes

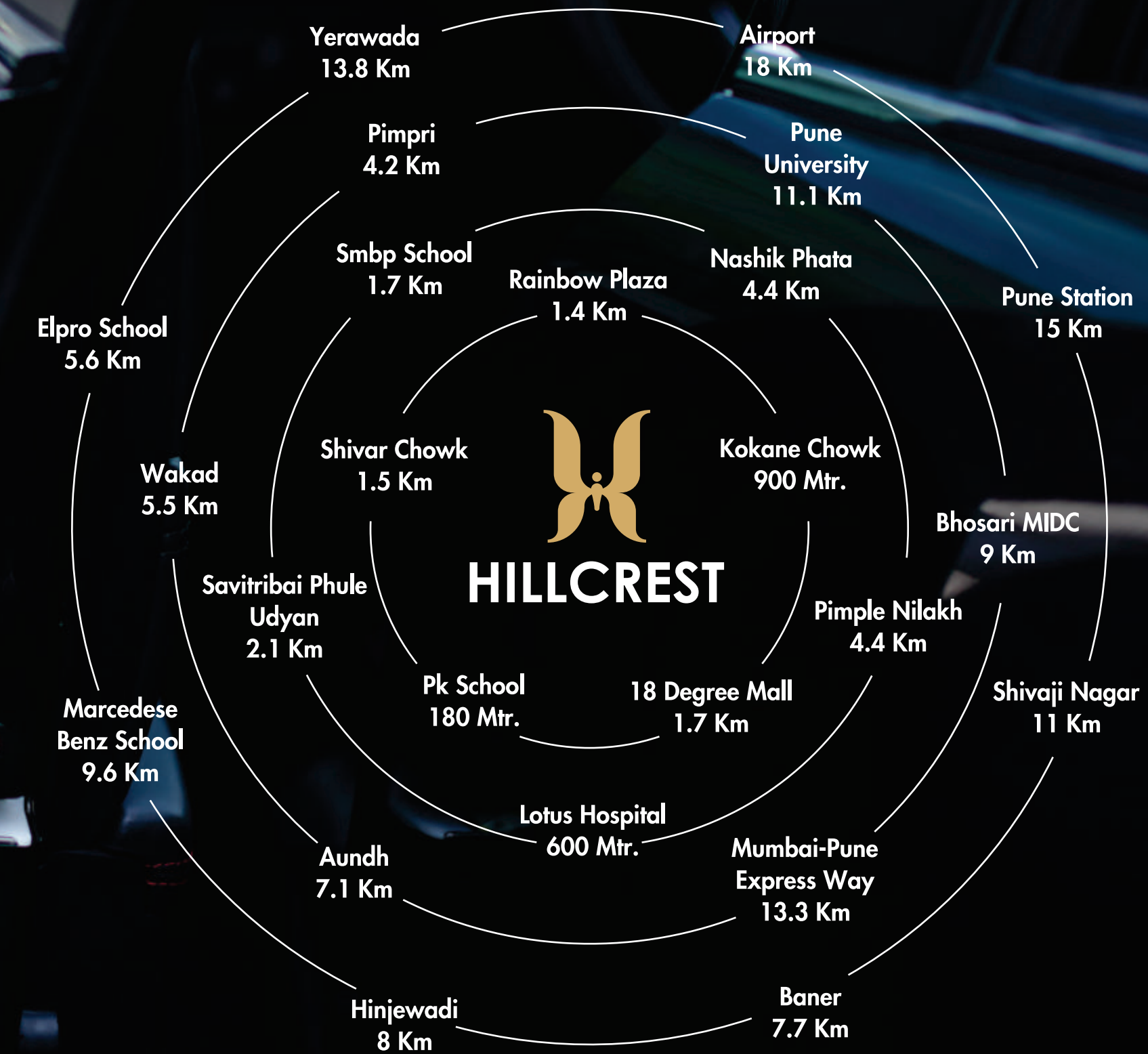
PERMANENT RED  
CARPET ARRIVAL



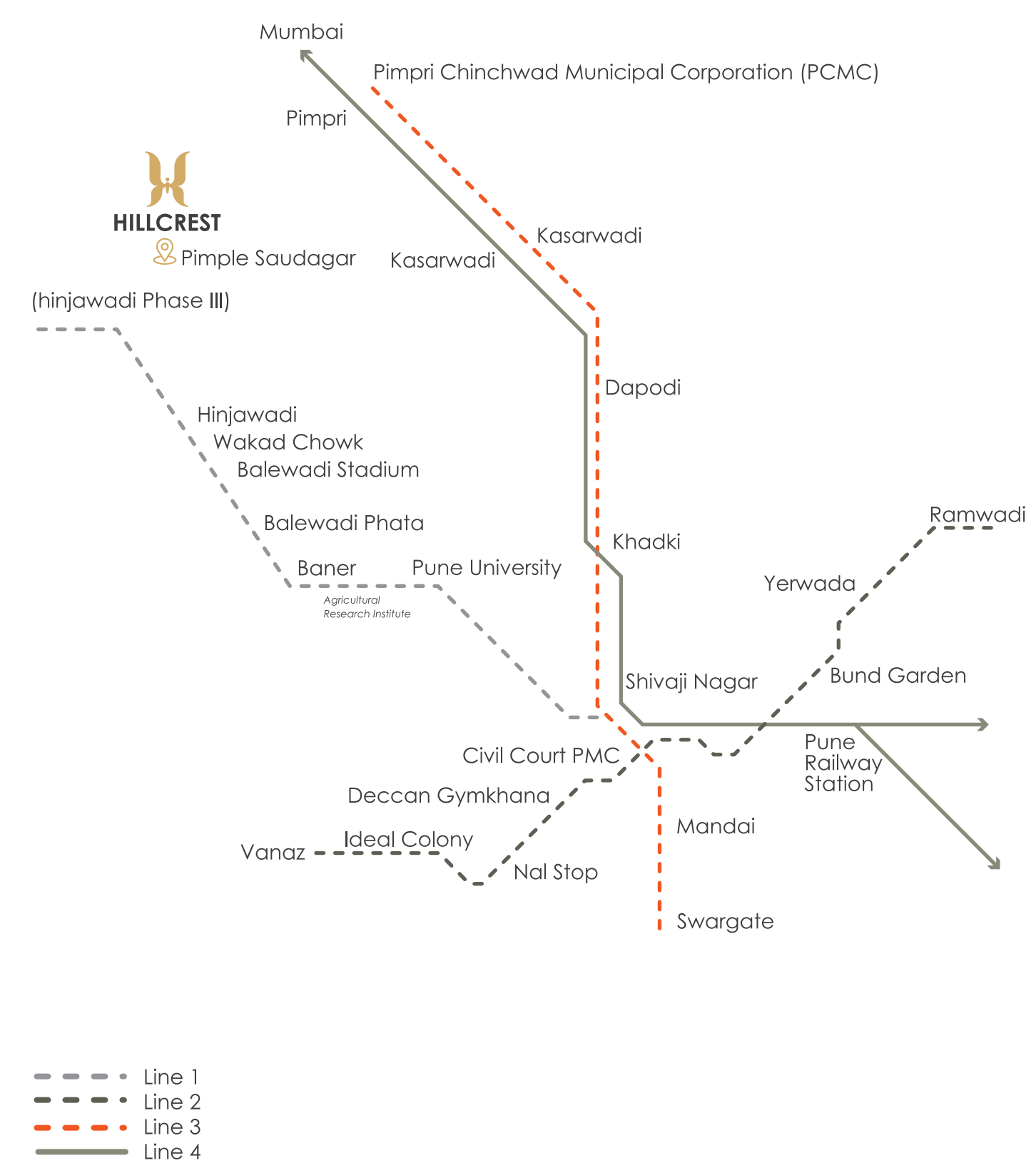


## All roads lead to home

Getting to and from your home in Hillcrest is amazingly easy. Well connected by a network of arterial and internal roads to almost every prime location in the city, Hillcrest is not just a gateway to prime living, it is a gateway to the city itself.



## Pune metro connectivity



Where  
Pune comes to  
**live, shop, and  
play.**



Pune has a new lifestyle destination, and it's in the heart of upmarket Pimple Saudagar, next door to the reputed PK International School. Its central location that offers easy access to the best conveniences, from schooling to shopping, coupled with expansive living spaces and upmarket lifestyle amenities, promises to make Hillcrest the new lifestyle epicenter of the area. A landmark for the area, home for a select few.



Head and shoulders  
above the rest

A masterclass in architectural style and substance, Hillcrest dominates the surrounding landscape, literally and figuratively. Rising 22 stories high, the contemporary design is home to plush 3 & 4 BHK residences that come with some never-before features, like the attached guest rooms, and work-from-home cubicles, complemented by a premium lineup of upmarket amenities.

Uplifting—in every sense





HILLCREST



DECORA

NATURAL

MINI MARKET

Evianto

VONICA

Angria

COFFEE CORNER

clothing

BOOKSTORE

Antiques

EUPHORIA

family shop

MENS FASH ION NEW LOOK

BUNCE

BIG SALE 70%

BOOK FAIR!

BOOK FAIR!

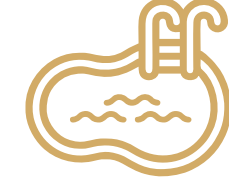


## Lifestyle features

- 22-story tower
- On-premises shopping areas
- Amenities on the ground, podium, and rooftop levels



Club House



Infinity Pool With Shallow Swimming Pool



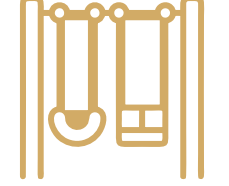
Double Height Gym



Driver / Servant Room



Security Cabin With Locker Room



Ground Level Amenities



Grand Entrance Gate



Pick-up/Drop Point



Podium Level Amenities



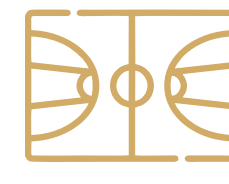
Party Lawn



Co-Working Office Space



Guest House



Multi-Play Court



Covered Seating Area



Grand Entrance Lobby



Indoor Games



Toddler's Play Zone



Deck Flooring

## Experience the world, without leaving home

World travelers who have imbibed the highest degree of style and comfort will find themselves completely at home in the upscale ambiances of Hillcrest.







## Podium level amenities

- Swimming pool
- Gymnasium
- Indoor gaming area
- Guest Room
- Meditation area
- Pool deck with cafeteria
- Landscaped open space
- Video game zone
- WFH Cubicles
- Ensuite guest rooms
- Pool Table
- Chess





## Making your guests truly feel at home

Hillcrest embraces the venerable sentiment of *Atithi Deva Bhavo*, with well-appointed guest rooms in the amenity area, where guests can make themselves at home, and the celebrations need never end.

## Working from home was never so comfortable

Hillcrest takes the concept of work-from-home to a whole new level of ease, with well-equipped cubicles for those times when you can't make the trip to the office—or just don't want to! With a home like this, who can blame you?





Let your next masterpiece  
**be yourself**

## Ground floor amenities

- Clubhouse
- Party lawn
- Multi-purpose court
- Children's Play Area





## Make every moment count

Time is a relative concept; how you spend it determines its length and value. We appreciate this truth, which is why Hillcrest is designed to offer a variety of recreations and venues for your pleasure. Whether you're in the mood for an energetic workout, want to chill with a friend, or just hang by yourself, you're in the right place for it.

## Top terrace amenities

- Outdoor Gymnasium
- Rooftop Meditation Area
- Rooftop Play Area
- Buffet Area



## Good company, good settings, good times

Friends and family make up the secret sauce to a life full of flavour and fun. And nothing spells fun like good times in spaces designed to take every celebration to a new level of festivities. Whether it is in the elegant spaces of your own home, the landscaped party lawn, or the spacious clubhouse hall, Hillcrest offers a choice of venues suitable for gatherings big and small.



## Inner peace awaits...inside

The lush landscaping and quiet environs of Hillcrest invite a sense of tranquillity that continues through the meditation zones, pleasant walkways, outdoor gymnasium and greenery that spans the campus.



A home of  
unparalleled luxury  
and originality.





Spaces bright  
and breezy to make  
every moment happy and cheery

## Rediscover the art of chilling

Take a break from the hectic, connected world we live in and let your senses revel in the quiet tranquility that permeates your home and grounds. Luxuriate in the expansive, convivial living spaces of your home. Perfect for a quiet interlude with your significant other or by yourself.



## Inspire the master chef in you

There's nothing quite like Hillcrest's elegantly fitted kitchen to get one's gastronomic creative juices churning. Designed to provide the best space for every piece of equipment that a chef might need, it is sure to add new flavor to your mealtimes.



## SPECIFICATION



### Living Room

- Vitrified digital flooring ( Size 5 X 2.5 )
- Gypsum- finished internal wall plaster with paint
- TV point in living room
- 3 track UPVC / GLAZED sliding door
- Laminated flush door



### Bedrooms

- Vitrified digital flooring
- Laminated wooden flush door
- 3 track UPVC / GLAZED window with mosquito net
- AC provision for all bedrooms
- TV point in all rooms



### Terrace/Balcony

- SS Safety railing with glass for balcony
- Anti-skid flooring ( Size 2 X 2 )
- Powder-coated aluminum doors



### Fitting Brand

- CP fittings - Grohe
- CP sanitary fitting - American Standard
- Electrical – Schneider - Switches Polycab - wiring
- Doors - Kalpatru
- Video phone - Hikvision



### Electrical

- Schneider switches in the entire apartment
- Concealed electrical wiring



### Kitchen

- Vitrified digital flooring
- Quarts kitchen platform with quarts sink
- Ceramic dado tile upto beam bottom level above kitchen platform (Size 1X2)
- Grohe CP fitting for kitchen
- Provision for water purifier & exhaust fan
- Provision for chimney
- MNGL piped gas system



### Toilets

- Granite door frame for all washrooms
- Laminated wooden flush door
- Aluminum louvers with provision for exhaust fan
- Ceramic dado wall tiles ( Size 4 X 2 )
- Wash-Basin
- Grohe CP fittings
- Water closet (Commode)
- Solar heated water in master bedroom toilet only for 3 BHK & 2 bedrooms of 4 BHK



### Other

- Intercom in every apartment
- Branded passenger & service elevators with stainless steel
- Texture paint for external walls
- Royal Emulsion paint in all internal rooms
- Earthquake-resistant structure confirming to IS code
- Main door digital lock - Quba brand, internal lock - Quba
- AC charging point provision for each parking
- Advanced security system
- CCTV cameras in all common areas



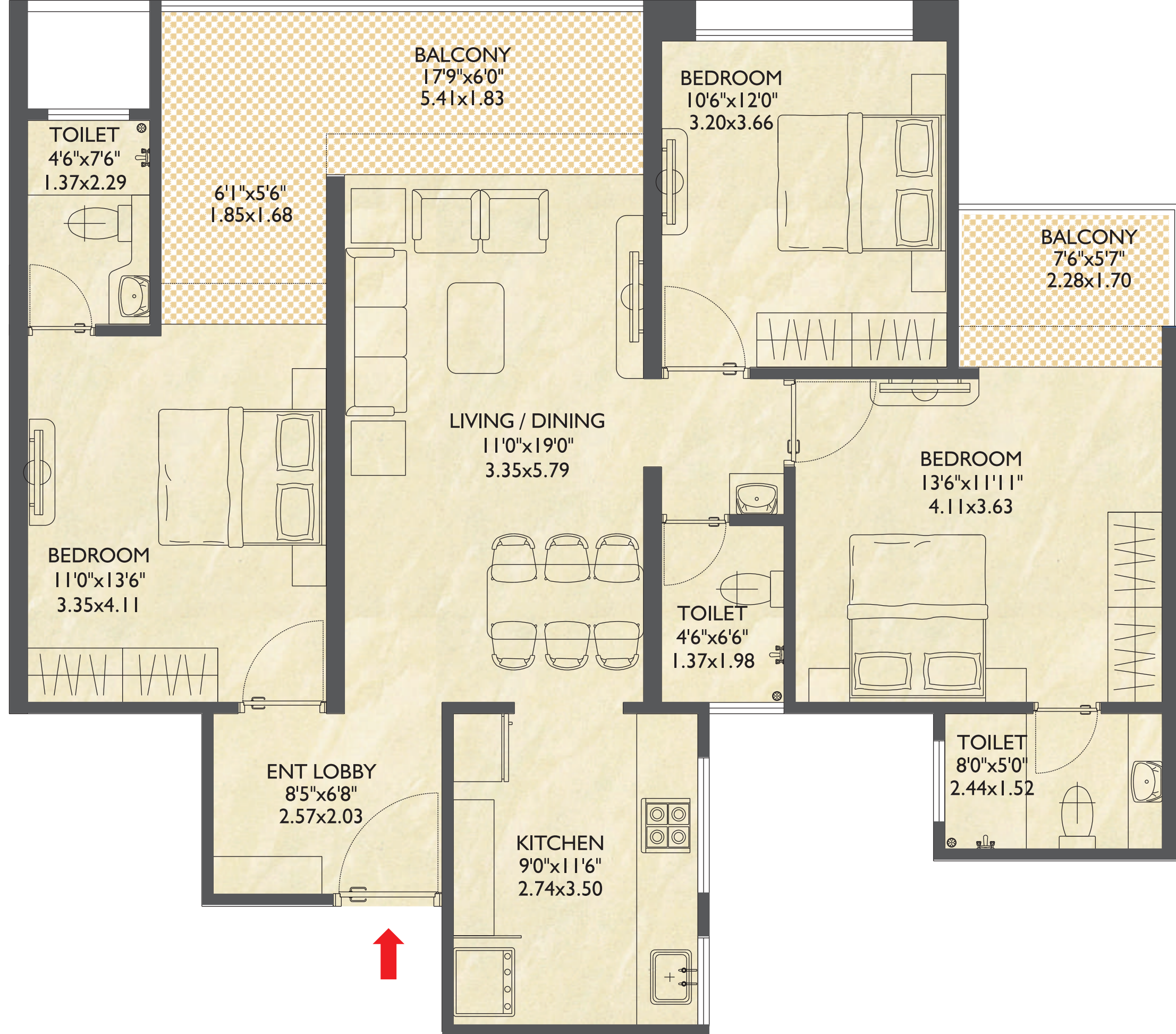


## Spaces in tune with **your moods**

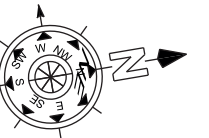
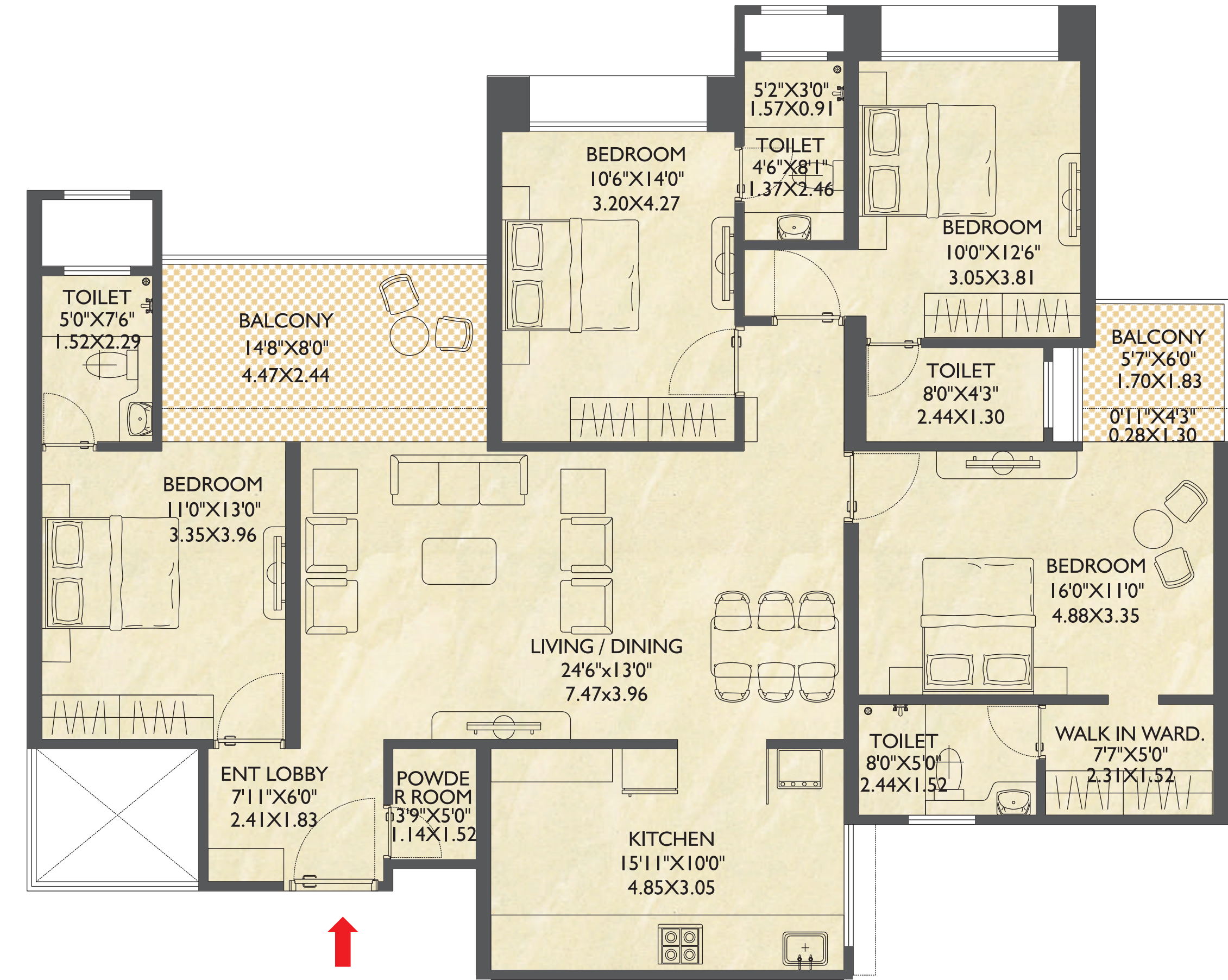
Your home is a fine mix of ambiances. From the suave living and dining areas, made for celebrations with family and friends to the quiet, comfortable, and private environment of your bedroom, every square foot is designed to delight a different aspect of what makes you special.



# 3 BHK Unit Plans



# 4 BHK Unit Plans





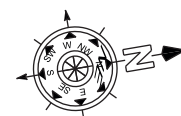
## WING - A

### 3 BHK - TYPICAL FLOOR PLAN

6th, 7th, 9th, 10th, 11th, 12th, 14th, 15th,  
16th, 17th, 19th, 20th & 21th

SALEBLE AREA STATEMENT IN SQ.FT.

SR. NO	FLAT NO	TYPE	CARPET AREA	BALCONY AREA	TOTAL AREA	SALEBLE AREA
1	601, 701, 901, 1001, 1101, 1201, 1401, 1501, 1601, 1701, 1901, 2001, 2101	3 BHK	975	185	1160	1566
2	602, 702, 902, 1002, 1102, 1202, 1402, 1502, 1602, 1702, 1902, 2002, 2102	3 BHK	975	185	1160	1566
3	603, 703, 903, 1003, 1103, 1203, 1403, 1503, 1603, 1703, 1903, 2003, 2103	3 BHK	975	185	1160	1566
4	604, 704, 904, 1004, 1104, 1204, 1404, 1504, 1604, 1704, 1904, 2004, 2104	3 BHK	975	185	1160	1566
5	605, 705, 905, 1005, 1105, 1205, 1405, 1505, 1605, 1705, 1905, 2005, 2105	3 BHK	980	180	1160	1566
6	606, 706, 906, 1006, 1106, 1206, 1406, 1506, 1606, 1706, 1906, 2006, 2106	3 BHK	980	180	1160	1566



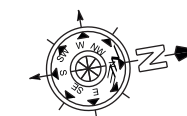
## WING - B

### 4BHK - TYPICAL FLOOR PLAN

6th, 7th, 9th, 10th, 11th, 12th, 14th, 15th, 1  
6th, 17th, 19th, 20th & 21th

SALEBLE AREA STATEMENT IN SQ.FT.

SR. NO	FLAT NO	TYPE	CARPET AREA	BALCONY AREA	TOTAL AREA	SALEBLE AREA
1	601, 701, 901, 1001, 1101, 1201, 1401, 1501, 1601, 1701, 1901, 2001, 2101	4 BHK	1438	154	1592	2149
2	602, 702, 902, 1002, 1102, 1202, 1402, 1502, 1602, 1702, 1902, 2002, 2102	4 BHK	1438	154	1592	2149





### Site Address

Hillcrest, Plot no 136/2, Near P K international School, Jarvari Road, Pimple Saudagar- 411027

[www.pkhillcrest.com](http://www.pkhillcrest.com)



Scan Here For Location

Lorem Ipsum is simply dummy text of the printing and typesetting industry. Lorem Ipsum has been the industry's standard dummy text ever since the 1500s, when an unknown printer took a galley of type and scrambled it to make a type specimen book. It has survived not only five centuries, but also the leap into electronic typesetting, remaining essentially unchanged.

It was popularised in the 1960s with the release of Letraset sheets containing Lorem Ipsum passages, and more recently with desktop publishing software like Aldus PageMaker including versions of Lorem Ipsum.