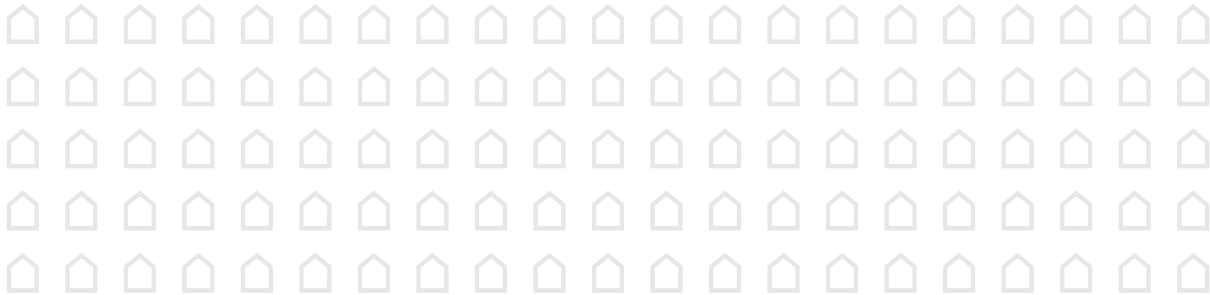
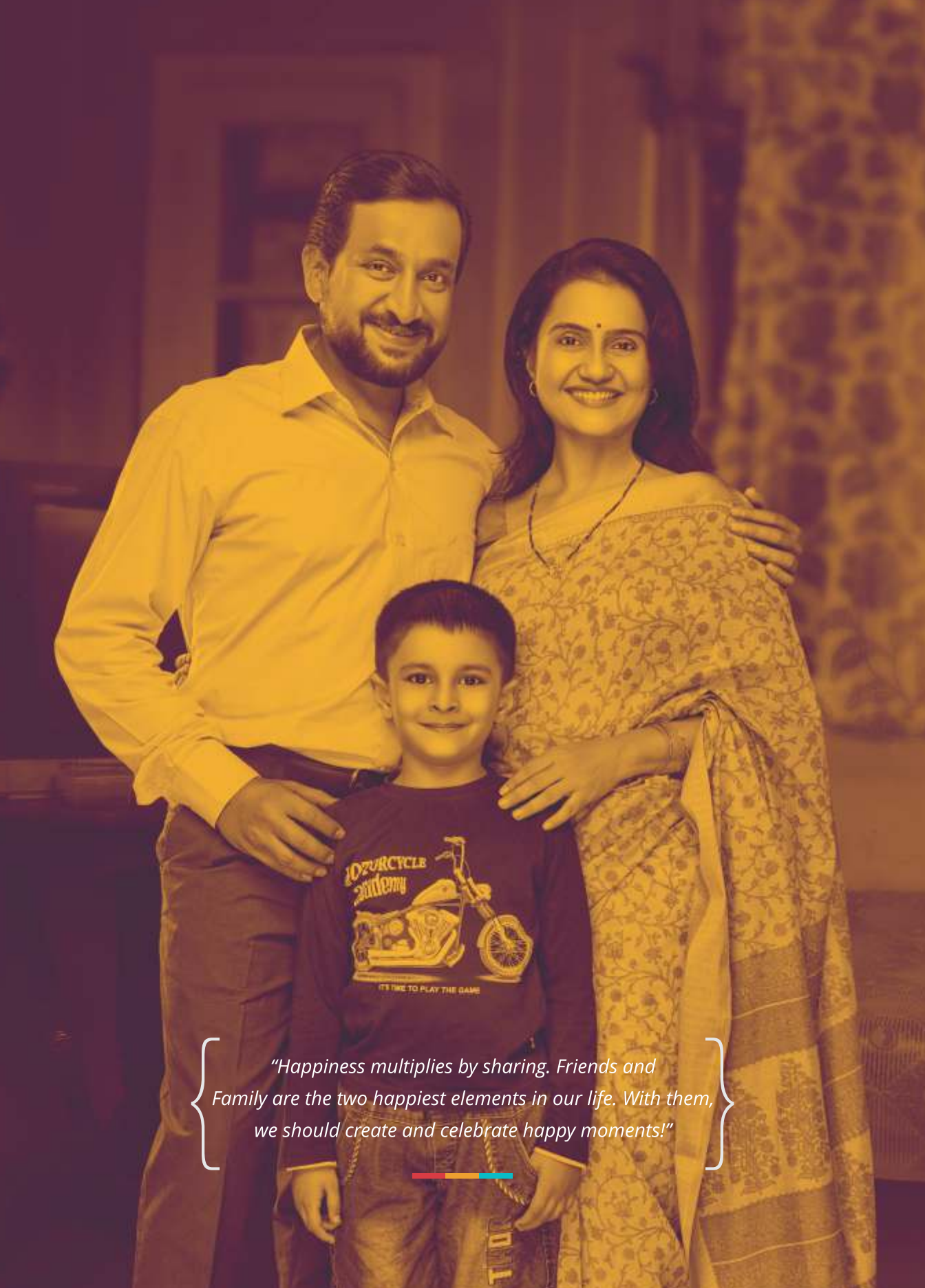


Happycity

TALEGAON - JIJAMATA CHOWK





"Happiness multiplies by sharing. Friends and Family are the two happiest elements in our life. With them, we should create and celebrate happy moments!"





Happiness is not an accident,
nor a miracle.

It is a choice made by you.

Happycity by Namrata Group is a home designed with finer detailing to enhance the happiness quotient of your family. This gated community of 1RK, 1 & 2 BHK homes at Jijamata Chowk, Talegaon – a central location, is a creation sparkling with happy space, happy saving, happy location and happy lifestyle. Ample open space, beautiful views, natural sunlight, crisp air and pleasant ambience add to quality living. We never believed in cutting corners, neither in space nor in cost. Happycity is a complete value for money home, designed to exceed your expectations and to fit your budget. Zero space wastage in the entire project has enabled every sq. ft. to optimum use.





Your search of the right location ends right here!

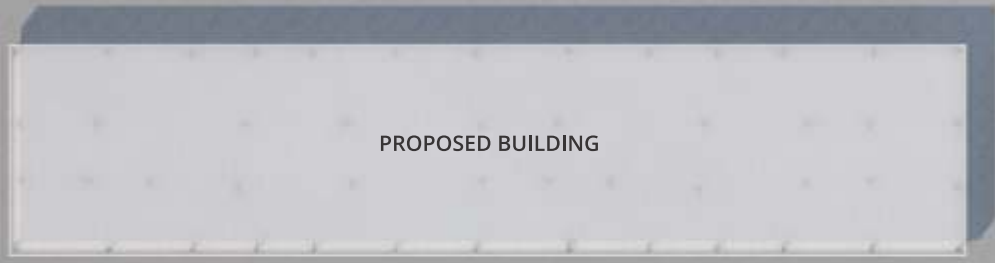
Finding no compromise location is our passion. One such location is Jijamata Chowk, a central locale in Talegaon, where Happycity is nestled on. Just 2 kms away from Talegaon Railway Station, it is easily accessible. Dotted by lush green, on convenient distances from school, colleges, hospitals, clinics, restaurants and entertainment avenues, this happy location will make your life easier and comfortable.

— KEY LANDMARKS DELIGHTFULLY CLOSE —

Talegaon Railway Station- 2 km
Talegaon MIDC- 6 kms
Hinjawadi- 30 mins drive

PCMC- 30 mins drive
Mumbai- 2 hrs drive
Navi Mumbai- 1.5 hrs drive

Phase - 1



PROPOSED BUILDING

PROPOSED BUILDING

- 1 STP
- 2 TRANSFORMER
- 3 CLUB HOUSE
- 4 CHILDREN'S PLAY AREA
- 5 UGWT







One big, happy family is awaiting you!

Studded with attractive lifestyle amenities such as Club House and Children's Play Area etc., Happycity is all set to maximize your happiness. Plus it is a creation of Namrata Group, a niche name in real estate. The group's Happiness Vision is focused on delivering you ultimate happiness in every aspect of buying and living. This one big, strongly bonded, vibrant family is awaiting you.

Come, make a new beginning into a happy future.



Artistic Impression



Artistic Impression



AMENITIES & SPECIFICATIONS

1. Club House

2. Children's Play Area

3. Jogging Track

4. Structure

- Earthquake-resistant RCC Frame Structure

5. Wall

- AAC block for External & Internal walls
- Sand face plaster for External wall
- Internal walls with gypsum finish

6. Door

- Main Door: Good quality laminated flush door
- Bedroom and Toilets :- Good quality flush door with oil paint
- Terrace door : Powder coated aluminium sliding door with mosquito net

7. Windows

- Powder coated aluminium windows
- Decorative MS railing for terrace

8. Flooring

- 2'x2' Vitrified tiles for Living, Kitchen and Bedrooms with skirting
- Mat finish ceramic tiles for Toilet & Bathroom
- Mat finish ceramic tiles for

Terrace/Dry Balcony

9 Kitchen

- Ceramic dado tiles upto 2' above the platform
- Granite platform with SS sink

10 Toilet

- Ceramic dado tiles upto lintel level
- Concealed CPVC plumbing
- Standard quality CP fittings and Sanitary fittings

11 Electrical

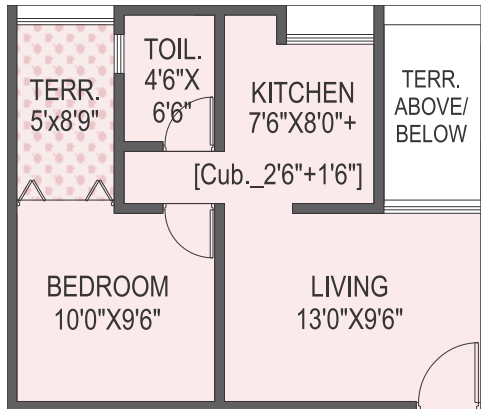
- Concealed fire-resistant copper wiring of Finolex or Polycab /equivalent brand.
- Modular switches of Vinay or equivalent brand
- Provision of AC in Master bedroom for 2 bhk
- DB with MCB
- Provision of exhaust fan in Kitchen & Bathrooms
- Provision for TV & Telephone connection in living room
- Provision for inverter connection

12 Painting

- External standard quality acrylic emulsion paint.
- Internal standard quality OBD paint

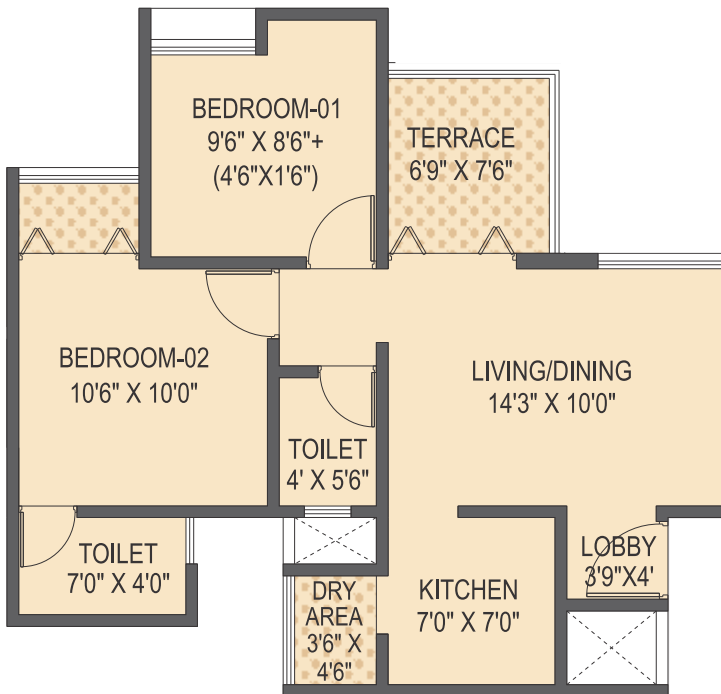
HAPPY- 1BHK

LIVING: 13'0"X9'6" | BEDROOM :10'0"X9'6" | KITCHEN: 7'6"X8'0"+ [Cub._2'6"+1'6"]
TOILET: 4'6"X6'6" | TERRACE 5'x8'9"



HAPPY- 2BHK

LIVING : 14'3" X 10'0" | BEDROOM 1: 9'6" X 8'6"+(4'6"X1'6") | BEDROOM 2: 10'6" X 10'0" | KITCHEN : 7'0" X 7'0"
TOILET : 4'0"X5'6" | TOILET : 7'0"X4'0" | TERRACE 6'9"X7'6" | DRY AREA : 3'6"X4'6"





KATVI

TO TALEGAON MIDC

ECOCITY

VARALE

TALEGAON MIDC RD.

YASHWANT NAGAR

HAPPYCITY

HARNESHWAR SHIV MANDIR

SAMSON NAGAR

NAMRATA ICONIC

VANSHREE NAGAR

Dr. Babasaheb Ambedkar Niwas Sthaan

TALEGAON STATION

MIMER MEDICAL COLLEGE

DHARMNATH

MALWA

ST. MOTHER THERESA CHURCH

POST OFFICE

ANAND NAGAR

ATTHARVA ACCIDENT HOSPITAL

JAIN MANDIR

GARDEN & PARK

FLORA CITY

TALEGAON DABHADE LAKE

TALEGAON STATION RD

HAPPYCITY

TO MUMBAI - PUNE EXPRESS WAY

FUN SQUARE MULTIPLEX

MUMBAI

KALAPINI RANG MANDIR

JJAMATA CHOWK

MUMBAI BENGALURU HIGHWAY

MORE SUPERMARKET LIONS BHANDARI HOSPITAL

PUNE



CREDITS :

Design Architect - ABA Architects
MEP - AES MEP Consultants

Liasoning Architect - A Design Architect
RCC Consultant - G A Bhilare & Associates



📍 **Corporate Office:** Survey No. 135/1+2B, CTS No. 3095, Ashok Sankul II, Office No. 301, 303,
3rd Floor, Range Hills Road, Shivaji Nagar, Pune - 411007. 🎥 🌐 📧

📍 **Site Office:** S.No 542 PART, HISSA No. 2, C.T.S. 4645 (PART) , 🏢 MAHARERA Reg. No.: P52100017513
Jijamata Chowk, Talegaon Dabhade, Tal. Maval, Pune -410506. <https://maharera.mahaonline.gov.in>

☎️ +91 86000 08951 🌐 www.happycitypune.com 📧 sales@happycitypune.com