



E M E R A L D

Supreme Luxury. Absolute Peace.



A PROJECT BY:- APR REALTY

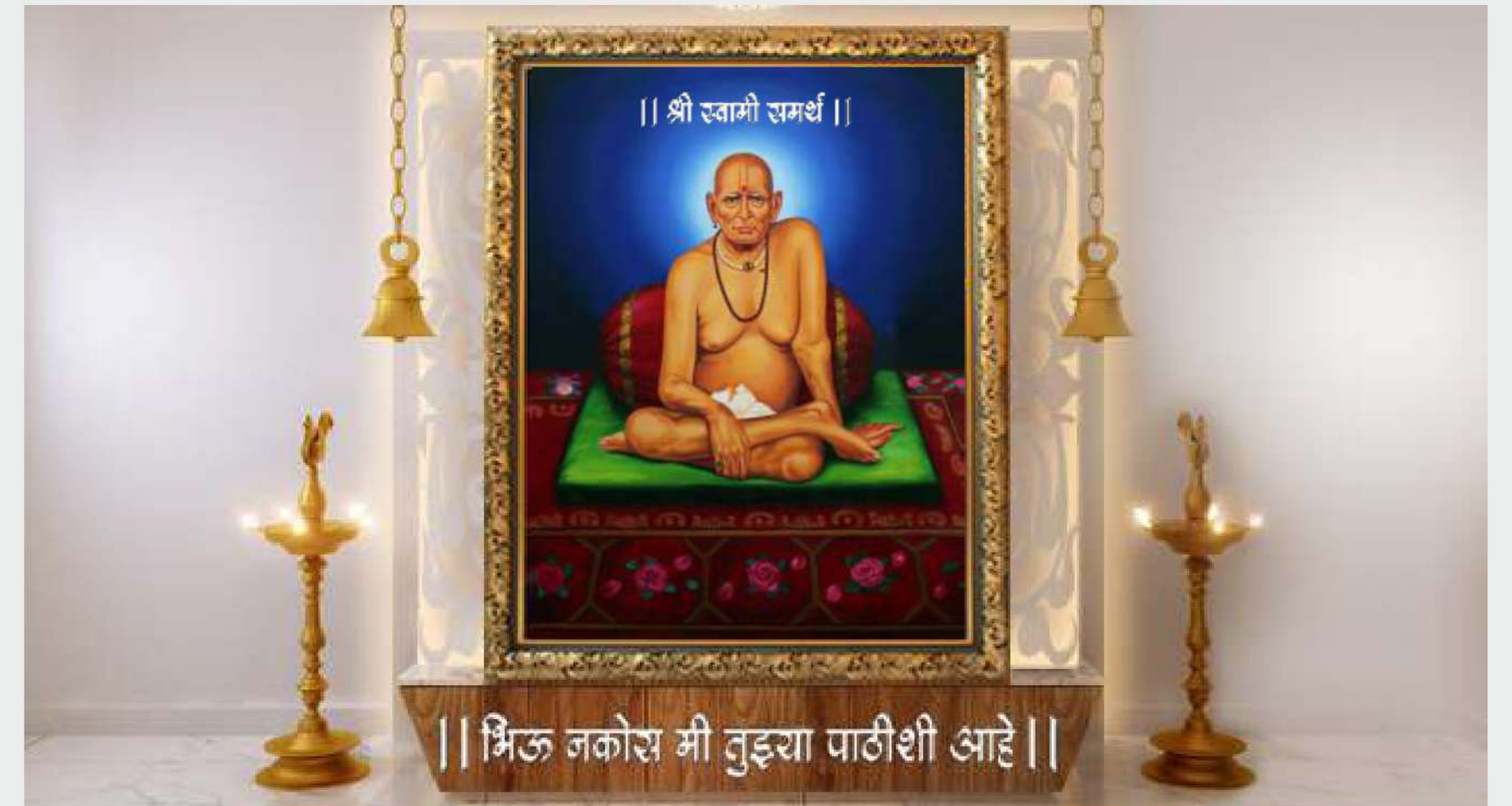


E M E R A L D

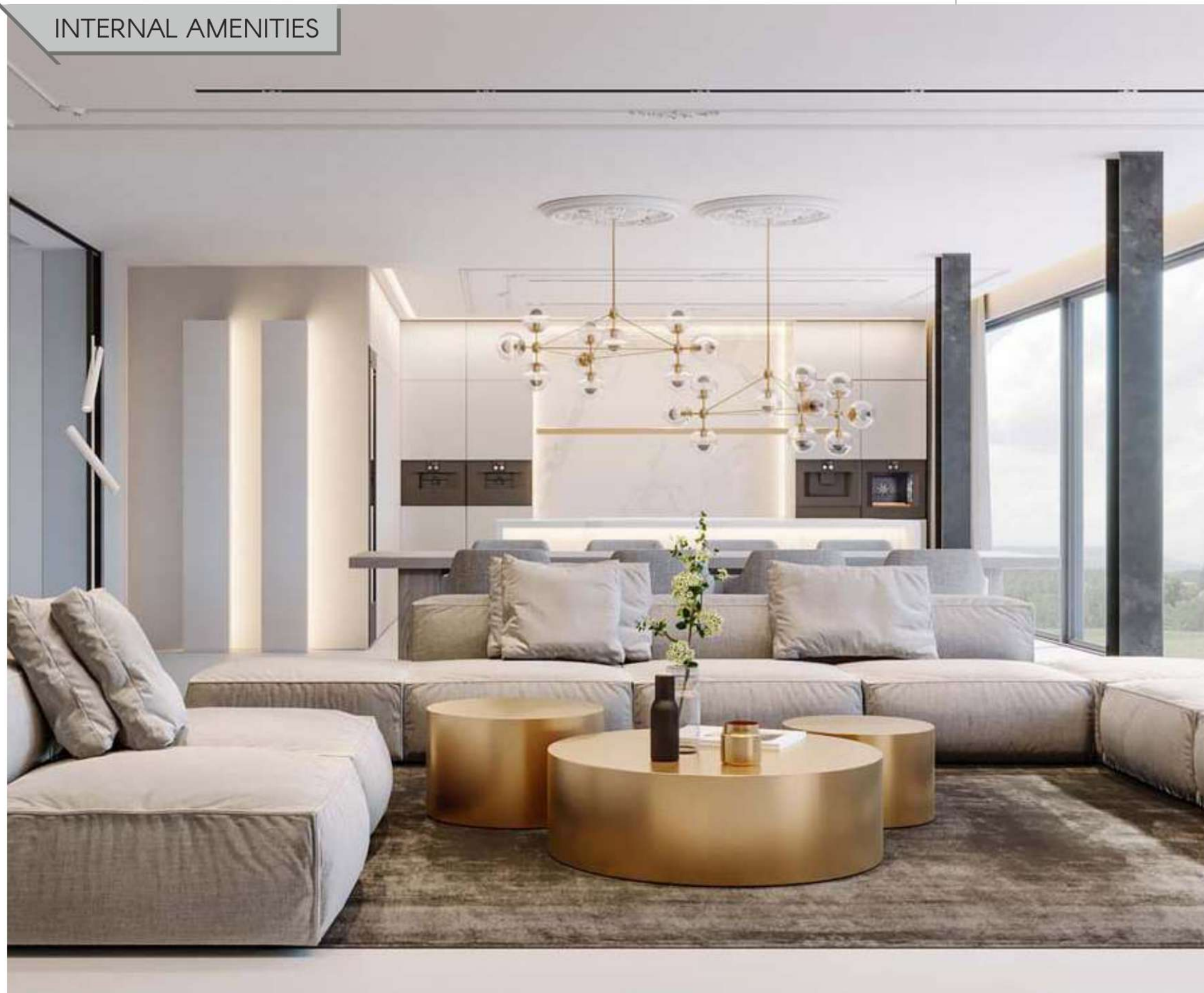
Relish the luxuries of a high-end lifestyle amidst serene environs in
Spacious and Elegant 1,2 & 3 BHK Residences
EMERALD each apartment is designed with keen attention
to VASTU and your beliefs.

A Vastu Compliant Homes Ensures

- Harmonizes Energy
- Bring Happiness
- Build Trust
- Spiritual knowledge
- Harmonious Relationship
- Financial Emolument
- Inner Peace
- Revives Mind, Body and Soul



INTERNAL AMENITIES



WALL FINISHING

- Pop Finished Wall
- Acrylic Paint On Internal Wall

WINDOW

- Marble Window Frame
- Powder Coated Aluminum Sliding Window Clear Glass
- Decorative Railing In Balconies

BATH & W.C.

- Full Height Tiles In Bath & W.c
- Niches For Storage In Bedrooms
- Provision For Geyser In Bath
- Provision For Water Tank On Loft
- Water Proof Door



ELECTRIFICATION

- Concealed Wiring With ISI Approved Wires
- Designer Modular Switches
- Strategically Located T.V., Telephone, Cable & Ac Point

FLOORING

- Elegant 24"x24" Vitrified Ceramic Flooring In Entire Flat.

KITCHEN

- Elegant Granite Platform With Stainless Steel Sink
- Provision For Water Purifier



GENERAL

- Provision For Inverter
- High Quality Lifts With Power Backup
- Video Door Bell & Intercom Facility In Each Flats
- Net Cabling With Intercom Facility

DOOR

- Decorative Entrance Door With Wooden Frame



CCTV Surveillance



Solar System



DG Backup



Stack Parking

EXTERNAL AMENITIES

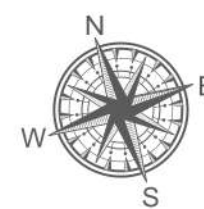
- Earth Quake Resistant R.C.C. Frame Structure
- Decorative Entrance Gate With Security Cabin
- Under Ground & Over Head Water Tank
- Rain Water Harvesting
- Bore Well Connection
- Fire Equipments
- Branded Elevators

1st, 3rd, 7th, 9th, 11th, 13th & 15th Floor Plan

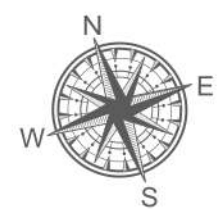
2nd, 4th, 6th, 10th, 14th & 16th Floor Plan



FLAT NO	CARPET AREA	TERRACE AREA	BALCONY AREA	F. B. AREA	TOTAL
101	722.21 sq. ft 67.12 sq. m	66.60 sq. ft 6.19 sq. m	25.39 sq. ft 2.36 sq. m	32.71 sq. ft 3.04 sq. m	846.91 sq. ft 79.71 sq. m
102	817.87 sq. ft 76.01 sq. m	70.48 sq. ft 6.55 sq. m	-	70.69 sq. ft 6.57 sq. m	959.04 sq. ft 89.13 sq. m
103	709.41 sq. ft 65.93 sq. m	79.95 sq. ft 7.43 sq. m	-	50.36 sq. ft 4.68 sq. m	839.72 sq. ft 78.04 sq. m



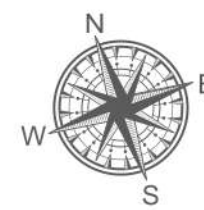
FLAT NO	CARPET AREA	TERRACE AREA	BALCONY AREA	F. B. AREA	TOTAL
201	722.21 sq. ft 67.12 sq. m	NIL	25.39 sq. ft 2.36 sq. m	62.95 sq. ft 5.85 sq. m	810.55 sq. ft 75.33 sq. m
202	817.87 sq. ft 76.01 sq. m	NIL	-	98.45 sq. ft 9.15 sq. m	916.32 sq. ft 85.16 sq. m
203	706.93 sq. ft 65.70 sq. m	80.38 sq. ft 7.47 sq. m	-	50.36 sq. ft 4.68 sq. m	837.67 sq. ft 77.85 sq. m



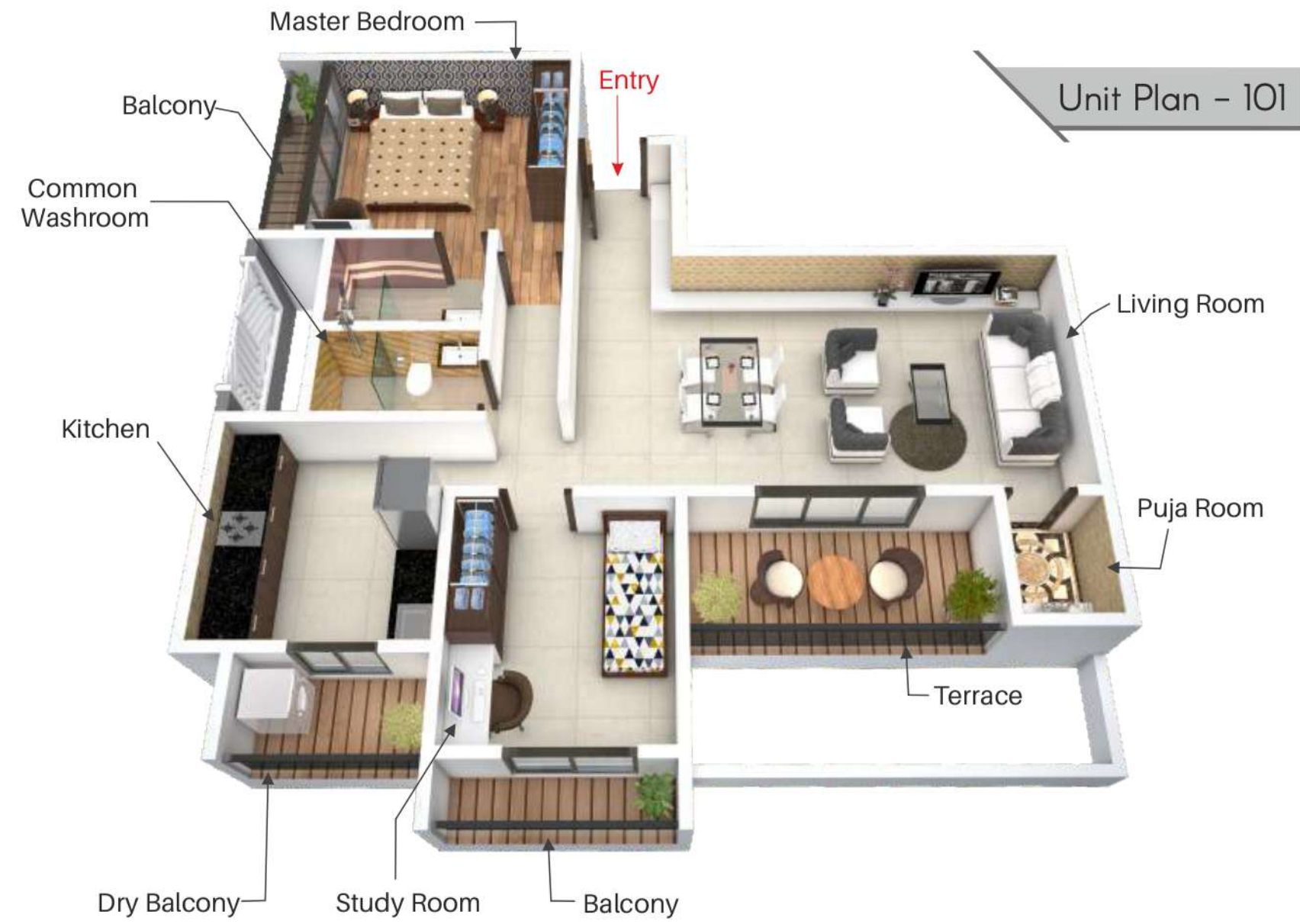
8th & 12th Floor Plan



FLAT NO	CARPET AREA	TERRACE AREA	BALCONY AREA	F. B. AREA	TOTAL
801	722.21 sq. ft 67.12 sq. m	NIL	25.39 sq. ft 2.36 sq. m	62.95 sq. ft 5.85 sq. m	810.55 sq. ft 75.33 sq. m
802	817.87 sq. ft 76.01 sq. m	NIL	-	98.45 sq. ft 9.15 sq. m	916.32 sq. ft 85.16 sq. m
803	590.07 sq. ft 54.84 sq. m	80.38 sq. ft 7.47 sq. m	-	31.00 sq. ft 2.88 sq. m	701.45 sq. ft 65.19 sq. m

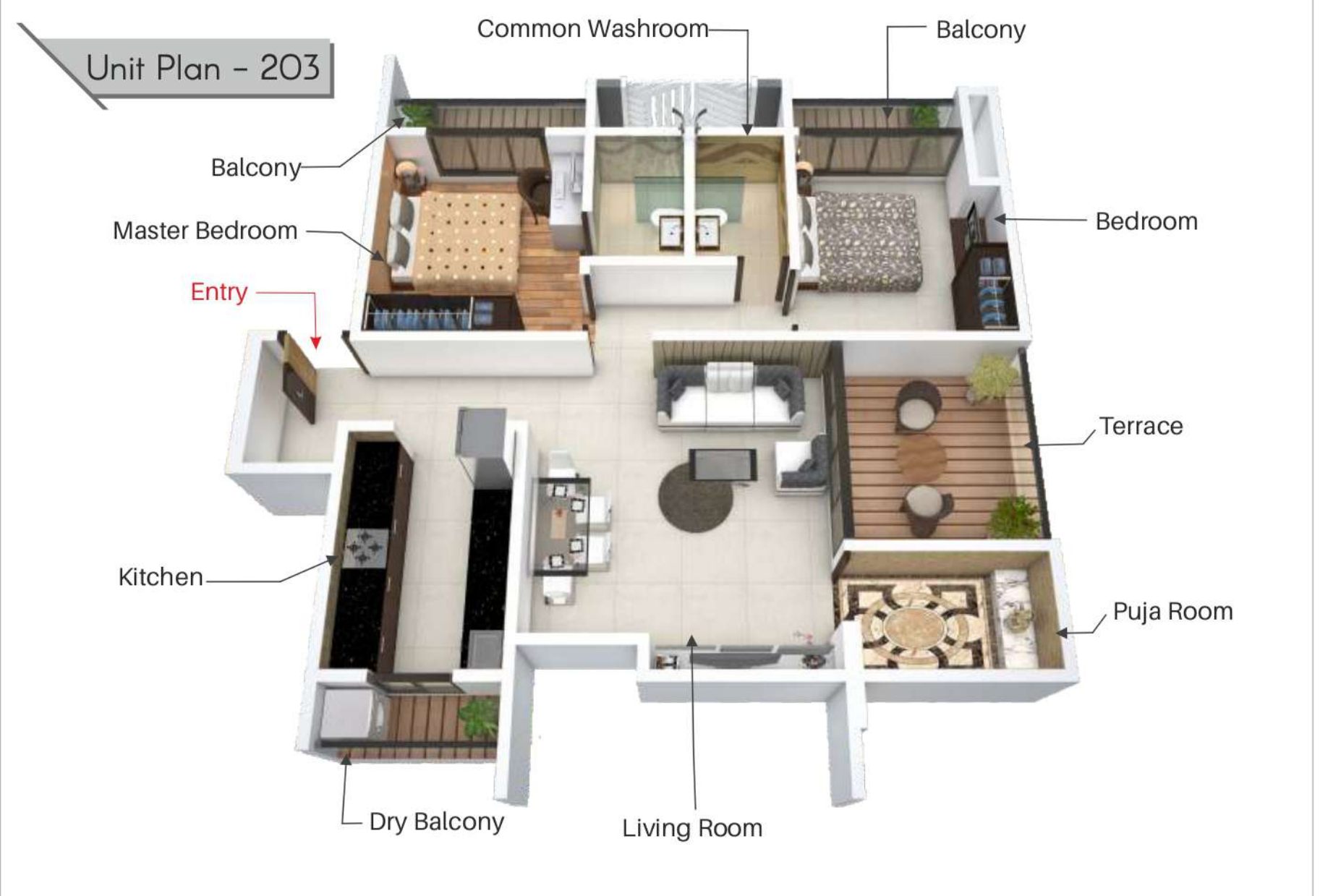
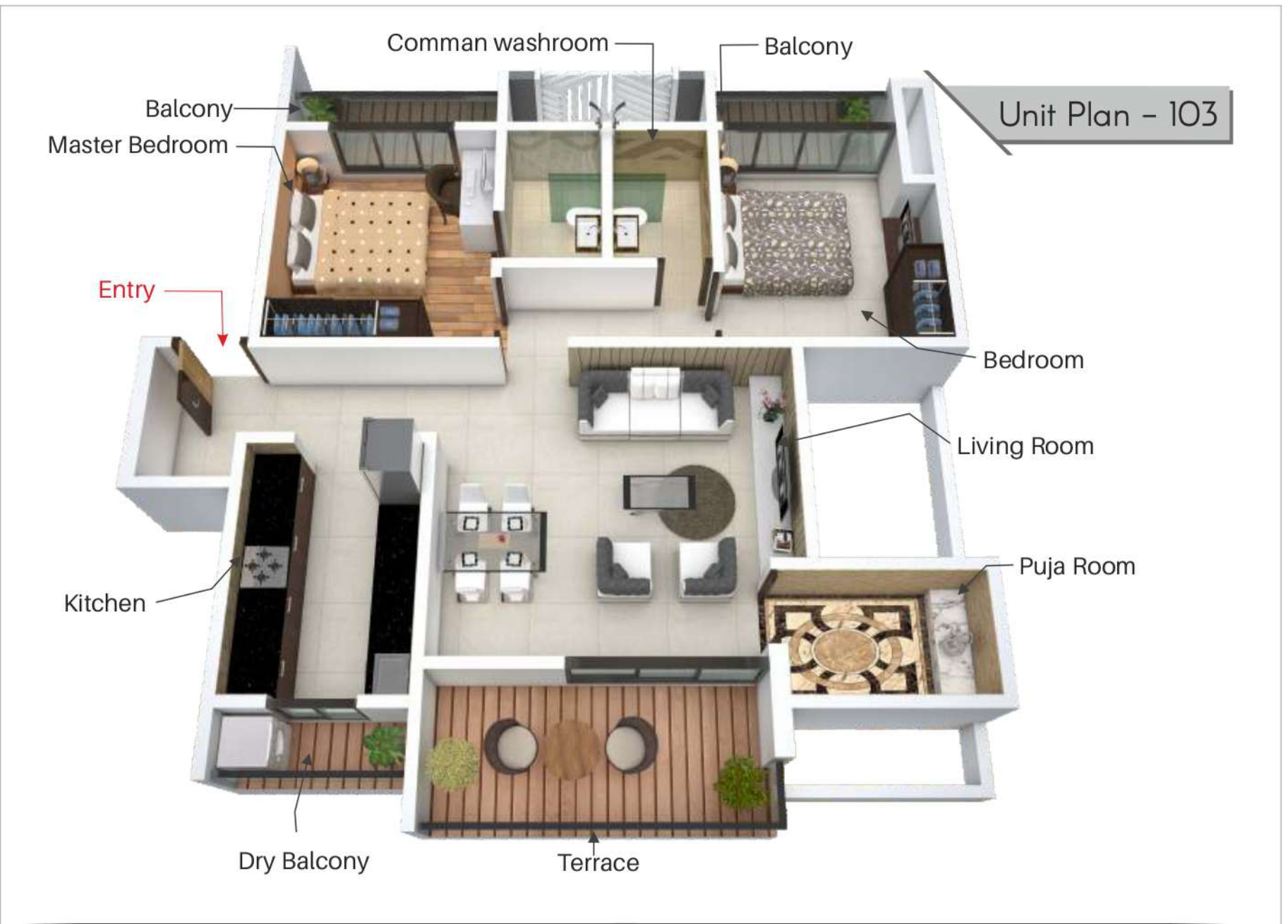


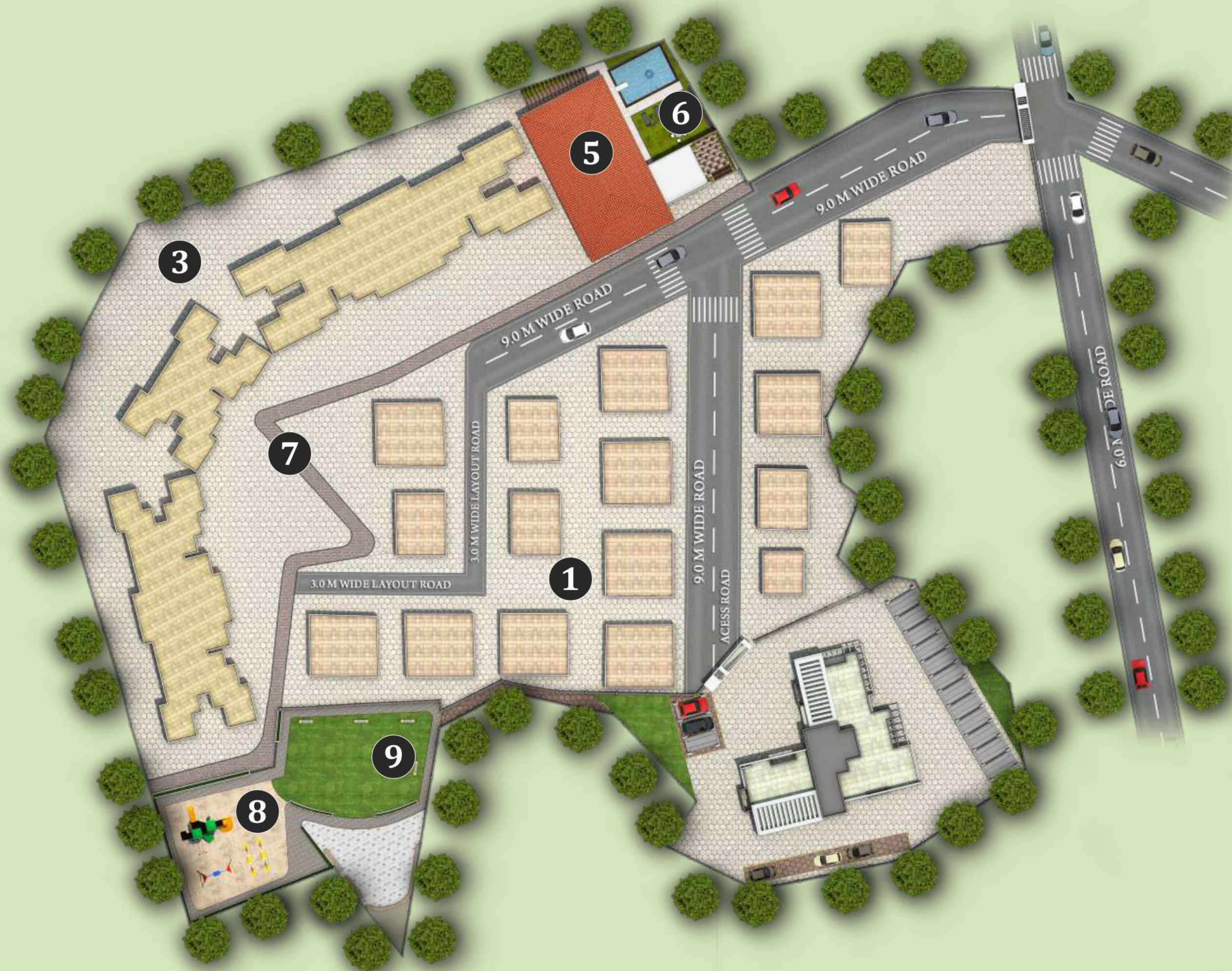
Unit Plan - 101



Unit Plan - 201







LAYOUT PLAN

- 1. Phase - I (Completed)
- 2. Phase - II (Under Development)
- 3. Phase - III (Future Development)
- 4. Entrance Gate
- 5. Club House
- 6. Swimming Pool
- 7. Jogging Track
- 8. Childrens Play Area
- 9. Senior Citizen Sitting Area
- 10. Stack Parking



Dombivali Station: 12 mins
 Thakurli Station: 12 mins
 Upcoming Metro: 8 mins



Omkar International School: 8 mins
 N.E.S. International School: 3 mins



Saraswati Vidya Bhavan College of Pharmacy: 5 mins
 Jondhale Engineering College: 5 mins



Mamata Hospital: 8 mins
 AIMS Hospital: 8 mins



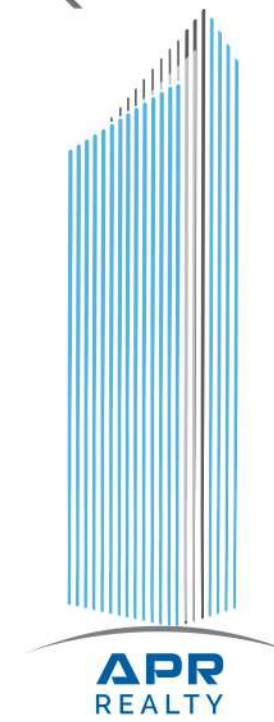
DNS Bank: 5 mins
 ICICI Bank: 8 mins



D Mart (Dombivli): 12 mins
 Xperia Mall: 15 mins



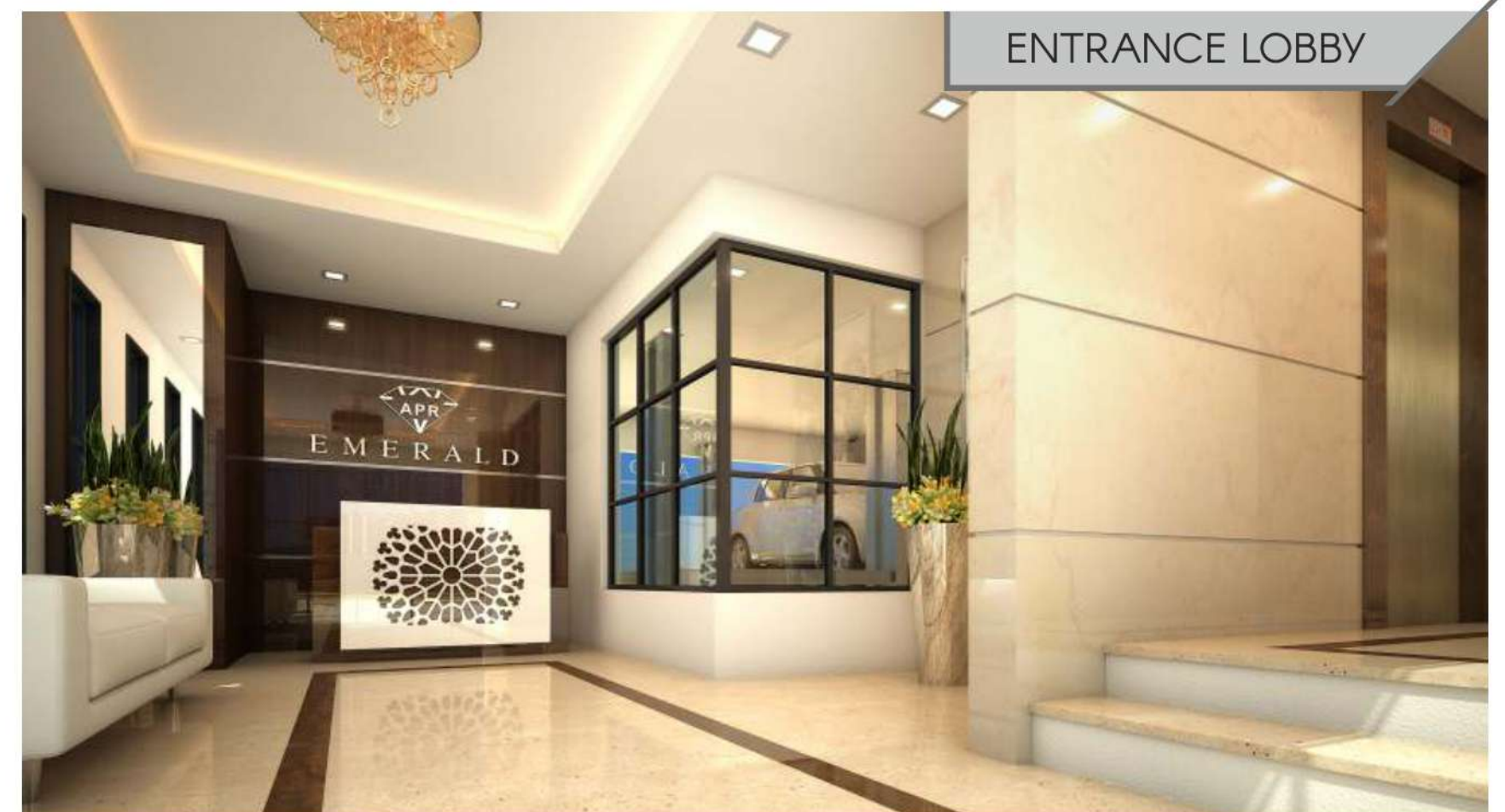
ABOUT US



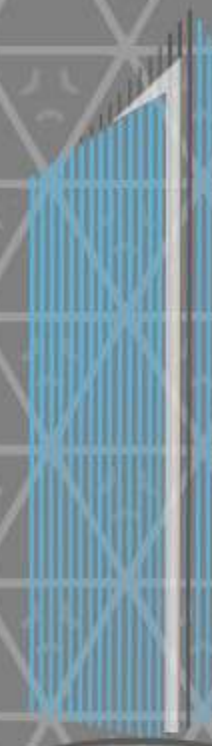
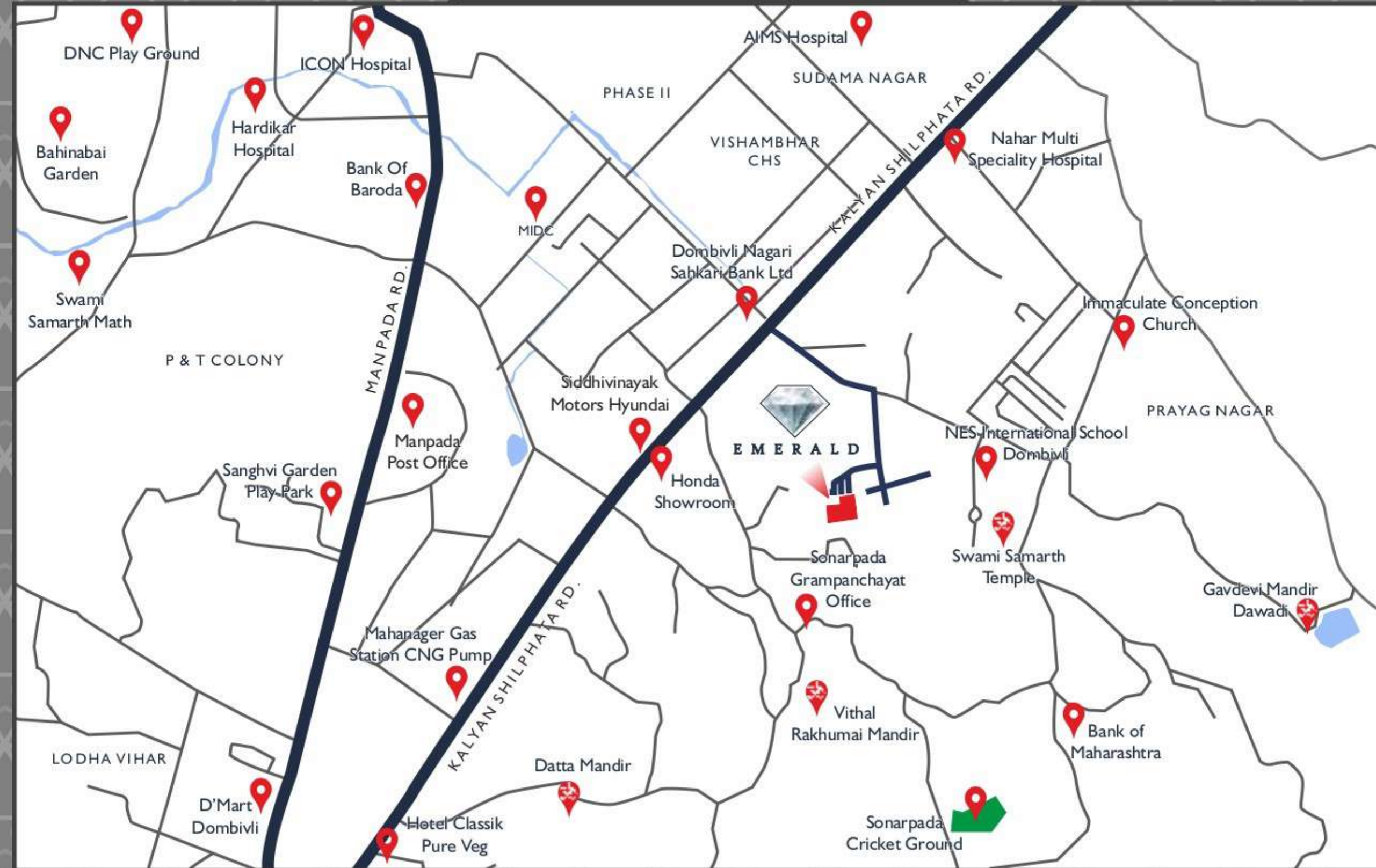
At APR REALTY, creating luxurious lifestyle projects isn't just a passionate Endeavour for us, it's an art that we cherish and celebrate. With a rich Experience of working with the leading architects, designers and developers Of the industry, our thoughtfully designed homes are crafted to delight our Patrons with world-class quality offerings. Our magnificent abodes aren't just A reflection of elegance and refined luxury But also impeccable artistry.

Where Life Breathes Happiness!

APR EMERALD is a plush paradise built on the pillars of unmatched comfort, World-class amenities and alluring architecture.



LOCATION MAP



APR
REALTY

Site Address: Emerald, Sadguru Krupa Co. Op. Hou. Soc.,
Shankara Nagar, Behind Shankara Vidyalay, Sonarpada, Dombivli (East) - 421201.

Architects:
Space Enviro Architects

Structural Consultant:
Entech Engineers

Legal Advisor:
Adv. Moreshwar Mhatre
Adv. Smita Sansare (Parab)

 The Project has been registered via the MahaRERA Registered Number : P51700025504

Disclaimer: The information, plans, images, drawings, amenities and feature contained in this brochure are only indicative of the kind of the development proposed. Subject to approval of the respective authorities & continuing improvement, the developers reserve the right to alter the layout plans & make changes to the specification or features without prior or obligation.