



*Gateway  
to a  
Richer Life*

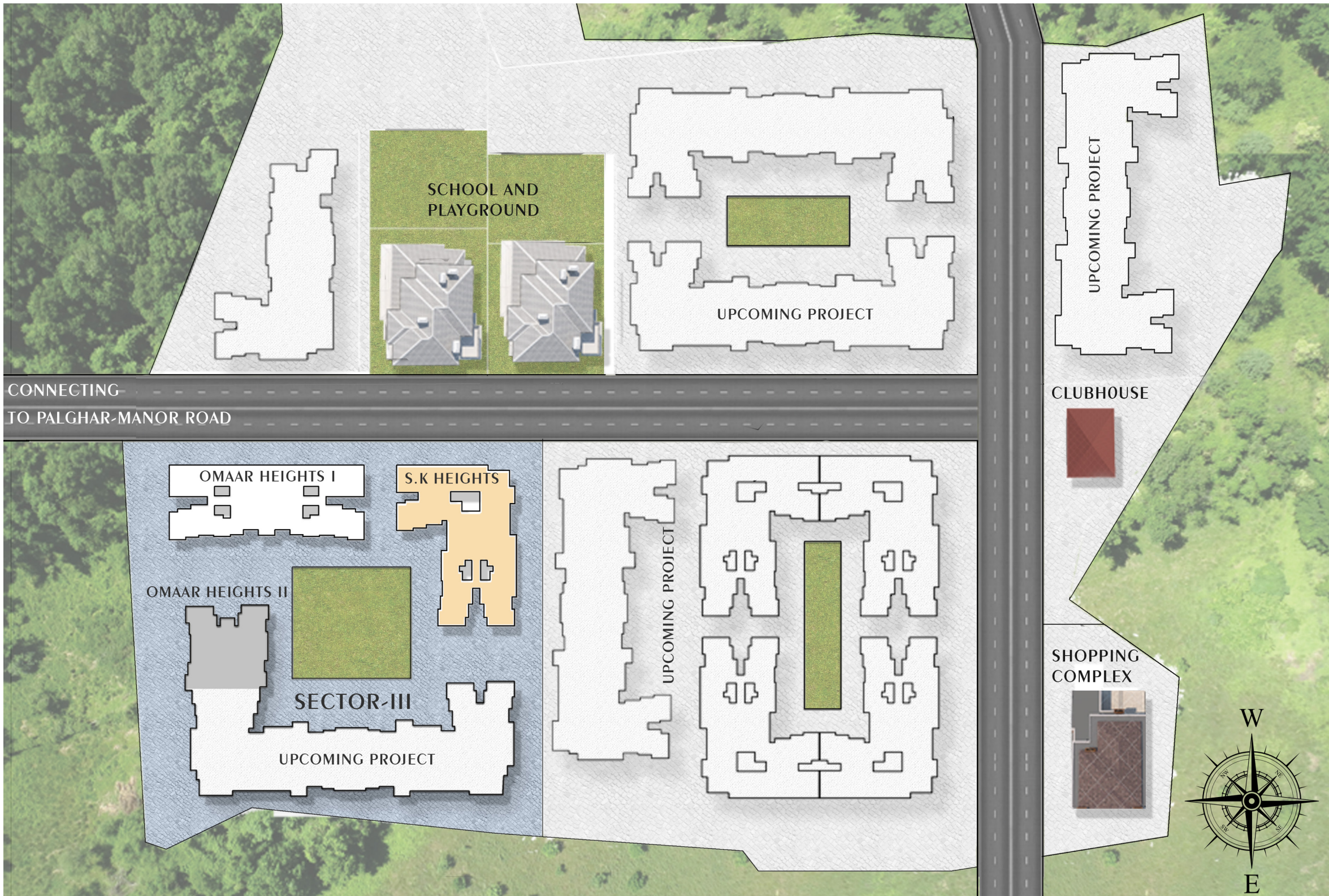
**S.K HEIGHTS**

**AFFORDABLE LUXURY  
APARTMENTS**

**PALGHAR CITY**



**RERA No: P99000032245**



SCHOOL AND  
PLAYGROUND

UPCOMING PROJECT

CONNECTING  
TO PALGHAR-MANOR ROAD

UPCOMING PROJECT

CLUBHOUSE

OMAAR HEIGHTS I

S.K HEIGHTS

OMAAR HEIGHTS II

SECTOR-III

UPCOMING PROJECT

UPCOMING PROJECT

SHOPPING  
COMPLEX



# S.K HEIGHTS

- Developed by SK realtors in collaboration with Omaar Buildcon.
- The connections between the collaborators have a deep history, dating back 15 years with expertise in field of Construction, Real estate Marketing and Legal advisor of the construction industry
- The collaborators have a shared vision of providing the best of luxury and affordable living, and with incorporating the latest technology.
- **Affordable luxury is the central theme of the apartment complex.**
- The contributors have collaborated on countless projects before this, but this is the first on which they proudly call their own.
- Each and every division of construction is managed and controlled by our team of experts who have expertise in their respective domain
- We offer exclusive services after completion of the construction of the project, for the benefit of the people who should feel comfortable and well settled in their homes









CLUBHOUSE



GARDEN



RECREATIONAL



JOGGING TRACK

GS Township has a wide range of on site amenities, where you can be rest assured that a affordable and luxurious lifestyle awaits you.



PLAYGROUND



SITOUT PAVILION



KID'S PLAY AREA



JOGGING TRACK



**PALGHAR MUNICIPAL COMPLEX**



**ST JOHN'S ENGINEERING & PHARMACY COLLEGE**



**MUMBAI - DELHI EXPRESSWAY**

## Township Location

- GS township is located at one of the most promising locations of 2021.
- 2 kms away from Palghar district headquarters that includes collector's office, police headquarter, court, VIP guesthouses and a lot of other district amenities.
- 5 mins away from St John's college of Engineering, Pharmacy and Management.
- Only 2 kms away from Palghar station, and largest upcoming bullet train station.
- GS township has a school onsite which is easily accessible for the residents .
- Delhi-Mumbai Expressway is an under construction 1350km 8 lane access-controlled road with a route alignment passing through Palghar

## Site Amenities & Security

- Intricately designed modern clubhouse, with space for social gatherings.
- Fully equipped branded Elevator along with spacious Black Granite Staircase .
- 24 Hours CCTV surveillance and security provided throughout the complex for optimum safety .
- 24 Hour water supply and in-house water purifier.
- Ample space provided for parking .

## Elevation and Building Design

- The building is an eclectic mix of Contemporary style Elevation with Victorian style details
- Aesthetically Designed Spacious common society space
- The thoughtful addition of adequately placed balconies adorn the elevation with a bit of victorian charm

Apartment view with garden space, jogging track and Luscious landscape

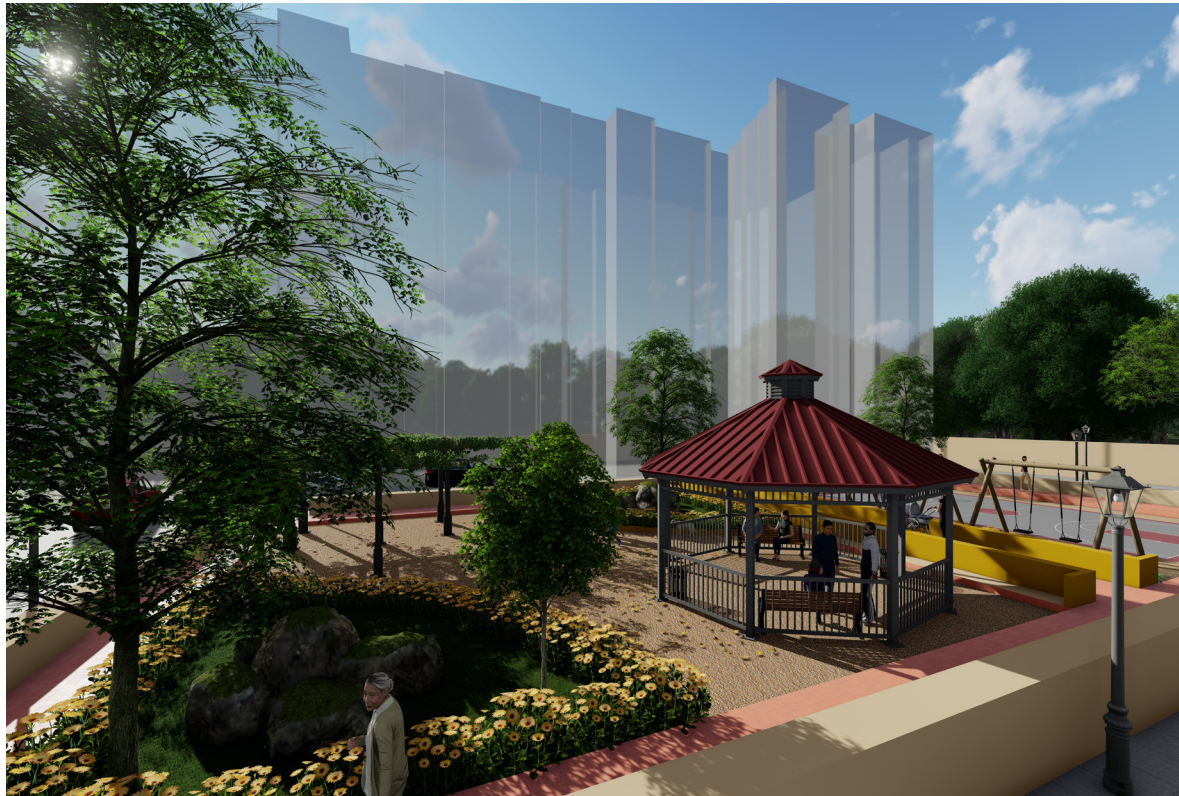


Front Facade with ample Commercial space

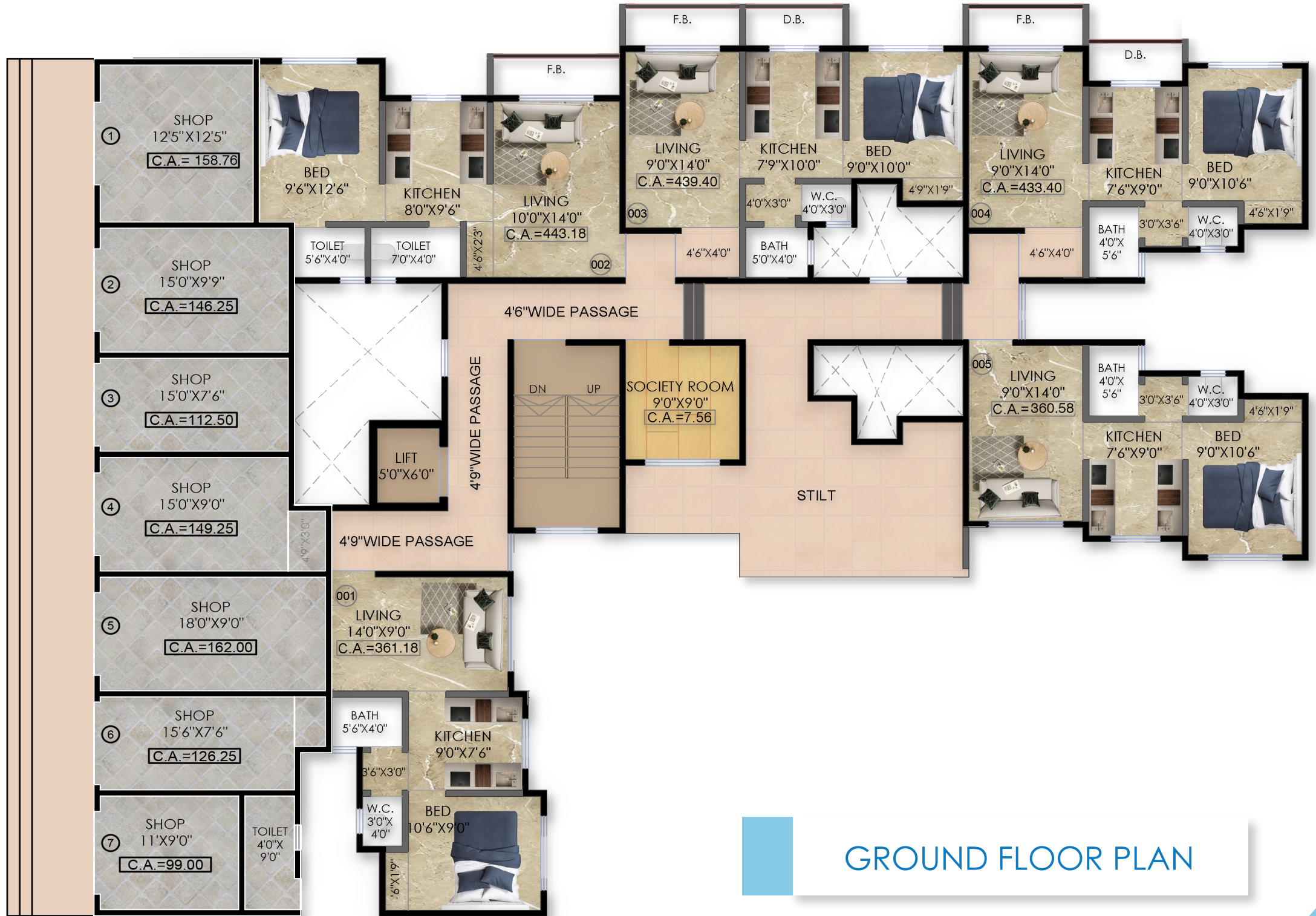


At GS Township you will find multiple amenities including school which is just across the street from SK Heights





Garden & Children's  
Playarea



GROUND FLOOR PLAN



FIRST FLOOR PLAN



2<sup>nd</sup> TO 7<sup>th</sup> FLOOR PLAN



1 BHK



### Fully furnished flats

- Living room includes Sofa, Tv unit and Centre Table
- Modular Kitchen with Water purifier
- Bedrooms includes Bed with mattress, Wardrobes, and Dressing Tables
- Washrooms with WC and Fittings



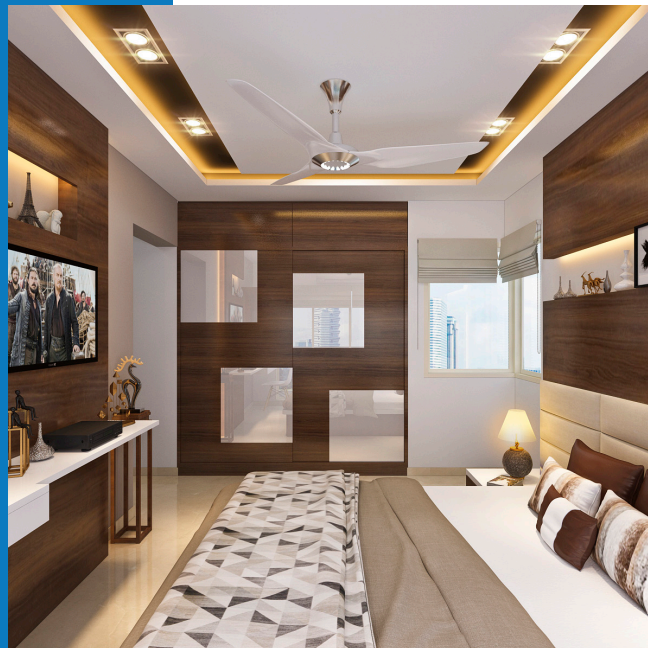




## 2 BHK

### Fully furnished flats

- Living room includes Sofa, and Tv unit
- Inverter and battery included
- Modular Kitchen with Water purifier
- Bedrooms includes Bed with mattress, Wardrobes, and Dressing Tables
- Washrooms with WC and Fittings



## Living and Bedroom

- Vitrified tiles with beautifully design
- False ceiling
- Spacious living room with linear layout and contemporary fittings.



## Kitchen

- Fully equipped modular kitchen with dry balcony and provision for all equipments.
- Exquisite Black granite platform with SS sink and additional service platform.



## Bathroom

- Uniquely designed ceramic bathroom tiles with vitrified flooring
- Superior quality Sanitary fittings with concealed plumbing.



## Door & Window

- French windows with wet and dry balcony.
- Anodised Aluminium window frames.
- Wooden door with modular fittings.
- Marine plywood and Granite frame in WS



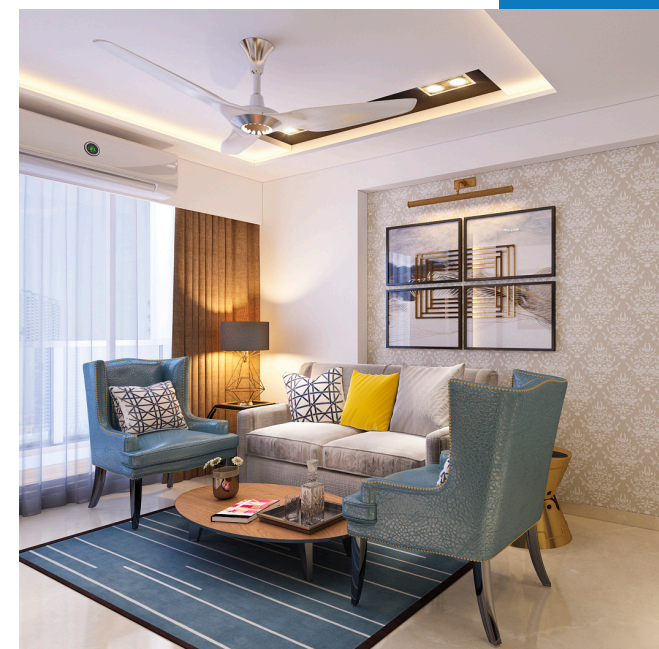
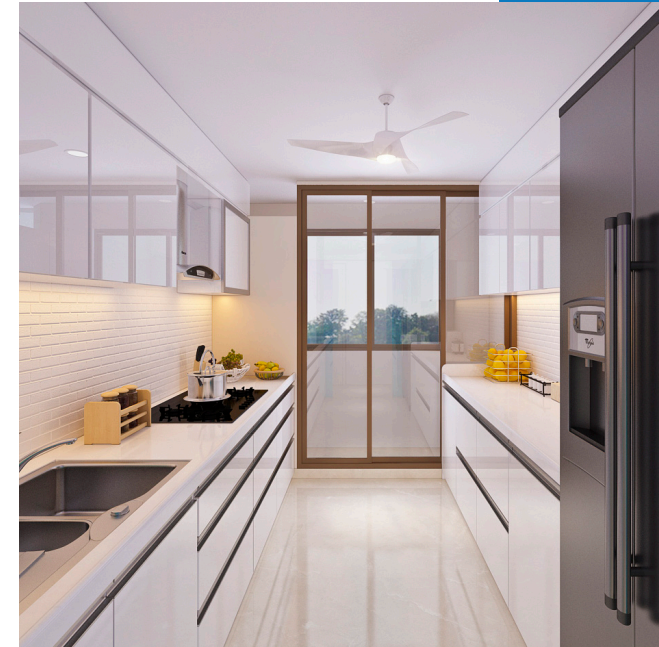
## Fully Furnished

- Superior quality designer furniture catered to the flat's interiors.
- Luxurious interior design apartments
- Options available for both fully furnished flats and non furnished flats.



## Electrical

- Branded Modular Switches with concealed copper wiring
- Provision for all possible outlets like MCB, two way switch, Ac (all rooms) , Tv, internet, etc





**DEVELOPER**

S.K Realtors

**OFFICE ADDRESS**

Rashmi Regency 1, Office no 7&8, Vasai - Nalasopara new link road, Vasai East.

**MARKETED BY:**

S.K Marketing Enterprise

**CONTACT NO:**

+91 9156669466/ 7385536545

**ARCHITECT**

Render Point, Vasai

**ELEVATION & BROCHURE DESIGN**

Renovinto Design Studio

**SITE ADDRESS**

Bearing No, 9, H, No-1,2,3,4,5 &6 at Village Shelwali, Palghar City, Taluka- Palghar, District- Palghar

**WEBSITE**

[www.skrealtor.co.in](http://www.skrealtor.co.in)

**EMAIL**

[skrealtorspalghar@gmail.com](mailto:skrealtorspalghar@gmail.com)



**DISCLAIMER :**

The information in this brochure is indicative of the kind of development that is proposed and not a legal offering. Subjected to the approval of authorities or in the interest of continuing improvements, the developer reserves the right to change the layout, plans, specifications, features, elevations or amenities without prior notice or obligation. The amenities, furniture, & accessories etc show inside the images in the brochure are purely indicative