



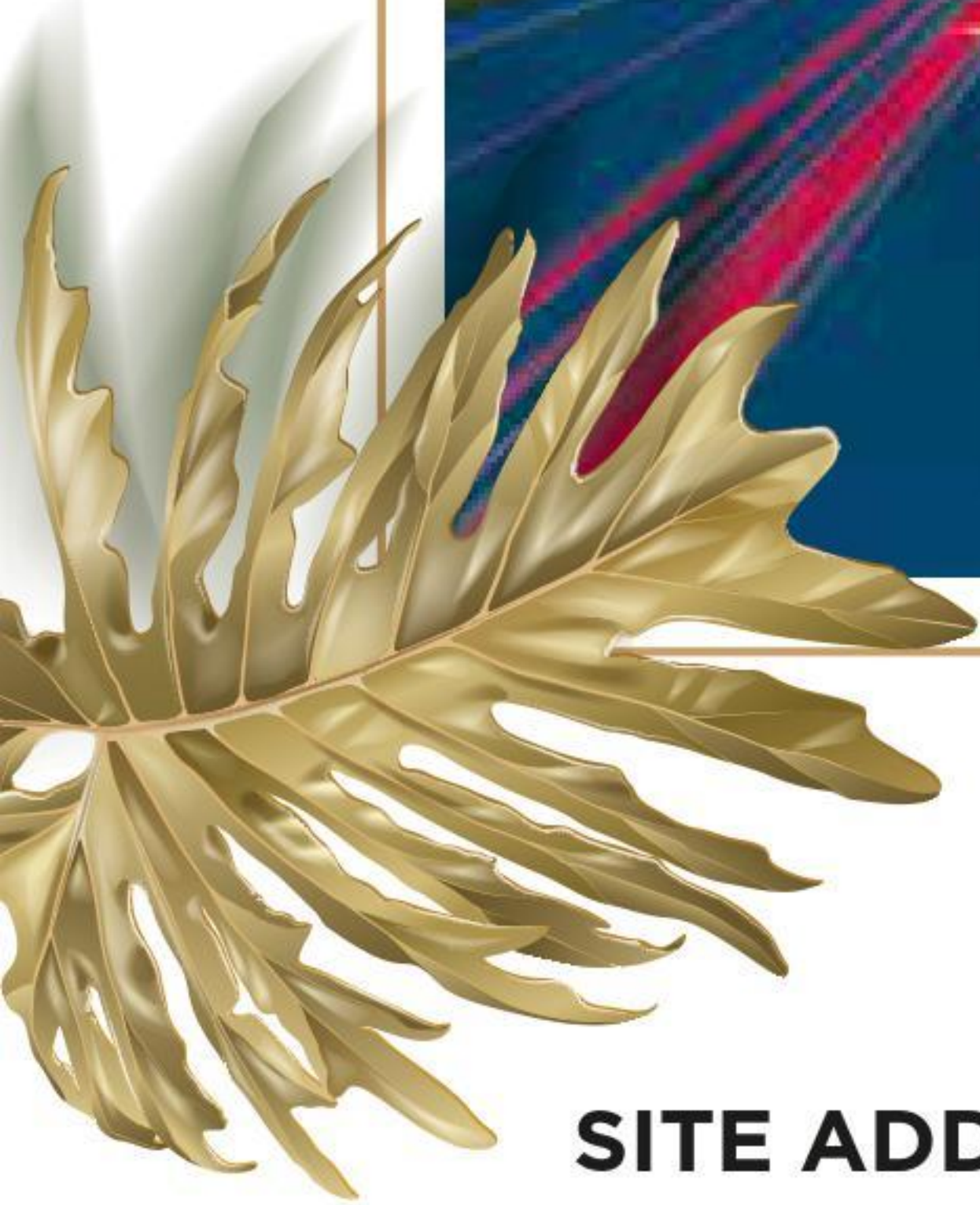
MahaRERA REG. NO. P52100018216  
www.maharera.mahaonline.gov.in



# GOKHALE ANANTAM

3 BHK Apartments

KOTHRUD



**SITE ADDRESS: Gokhale Anantam**, Plot No. 17, Survey No. 125 1A/B, Girija Society,  
Near Bedekar Ganpati, Kothrud, Pune - 38.

For more details, call **7350 498 999** | [www.gokhaleconstructions.com](http://www.gokhaleconstructions.com)



# GOKHALE ANANTAM

3 BHK Apartments

## COME HOME TO PUNE'S MOST CHERISHED.

A home in Kothrud brings with it limitless happiness. This promise of limitless happiness comes from the ever-developing yet culturally-rooted neighbourhood. Over the years, Gokhale Constructions, through redevelopment, has delivered new-age lifestyle in this area, adding a layer of urban luxury. Here's your chance to own a home at Kothrud - one of Pune's landmarks!

Presenting Gokhale Anantam, a set of 3 BHK Luxurious Apartments near Bedekar Ganpati, Kothrud, where a fine confluence of the old and new Pune is enjoyed every day. With new-age indoors and premium specifications, own a home that is blessed with everything you need.

In addition to this, excellent connectivity with Prabhat Road, Karve Nagar, Law College Road, Deccan, and Chandani Chowk, makes living here, an experience of limitless happiness for every family member.

## AMENITIES



Video Door Phone



Individual Solar Water Heaters



Firefighting System



Video Security System

- Eye-catching elevation
- Gracefully designed entrance lobbies
- Underground and overhead water tanks of adequate capacity and an automatic water level controller
- Automatic door elevator of reputed make
- Electronic security system with video door phone
- Solar water heater system
- Name plates and letter boxes at entrance lobby on parking floor
- Firefighting system
- Vermiculture
- Anti-termite treatment to the foundation of the building
- CCTV in car parking area



# GOKHALE ANANTAM

3 BHK Apartments

## SPECIFICATIONS

### RCC

- Earthquake-resistant framed structure conforming to IS codes

### BLOCKWORK

- External Walls - 6" AAC / Siporex
- Internal Walls - 4" AAC / Siporex

### PLASTER

- External Walls - Double-coat plaster with water proofing chemical & Recron Fibers
- Internal Walls - Single-coat plaster with Recron Fibers and POP finish for walls & ceilings

### FLOORING & TILING

- 800 X 800 MM vitrified Kajaria / Johnson flooring
- Decorative 600 X 300 MM dado tiles
- Anti-skid ceramic flooring for toilets & terraces

### DOORS

- Decorative main entrance with laminate finish
- Main door with Godrej Mortise lock & night latch

### WINDOWS

- Aluminum powder-coated windows with mosquito net
- MS safety grill for all windows
- Granite & marble four-side double-framed sill for all windows

### KITCHEN

- High gloss granite top with SS sink
- Glazed/Ceramic dado tiles up to ceiling height
- Jaquar Florentine series CP fittings
- Provision for water heater & exhaust fan
- Provision for piped gas

### WASHROOMS

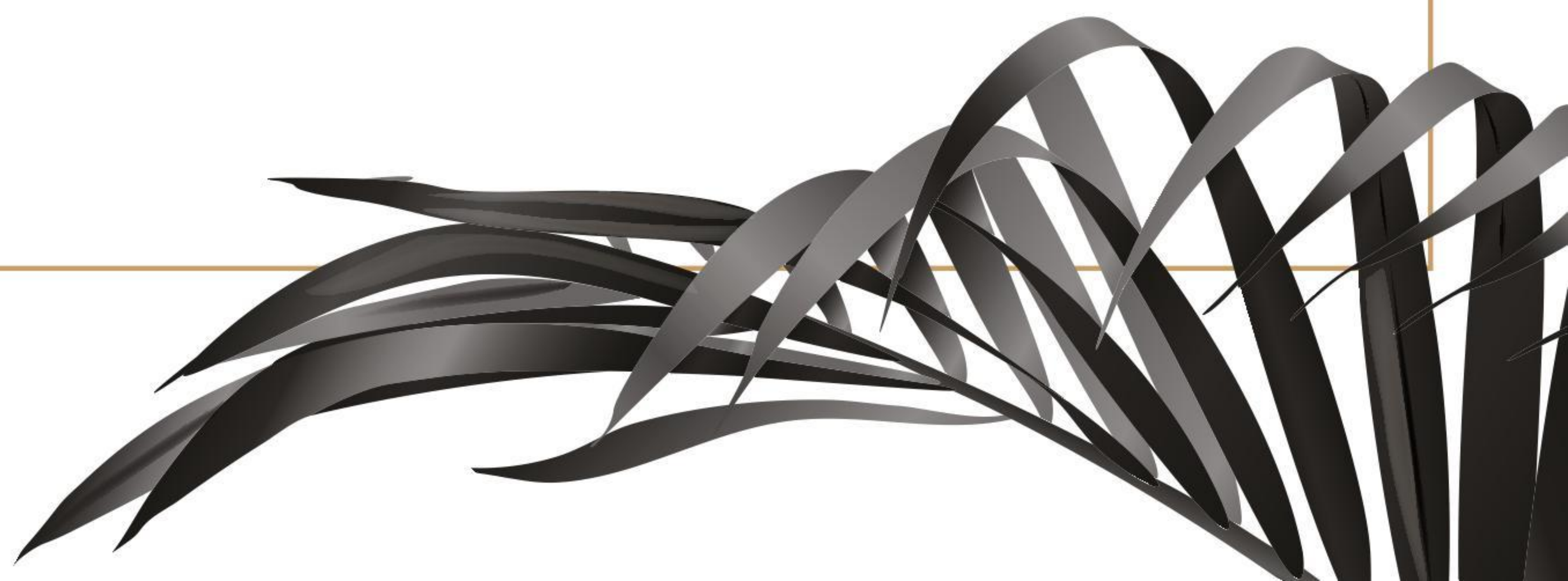
- Jaquar Florentine series CP fittings
- Dado tiles up to ceiling height
- Concealed CPVC / UPVC plumbing with diverter for hot & cold water
- Provision for water heater & exhaust fan

### ELECTRIFICATION

- Branded MCB & ELCB (Earth Leakage Circuit Breaker) for apartment
- Adequate points with branded modular switches (Anchor/Roma/Legrand) & copper wiring (Polycab)
- TV & Telephone points for living room and bedroom
- 15 Amps power points for electrical appliances
- Provision for AC
- Provisions for internet points

### PAINTING

- Plastic emulsion for living room and kitchen
- Apex paint for all external walls
- OBD for all bedrooms

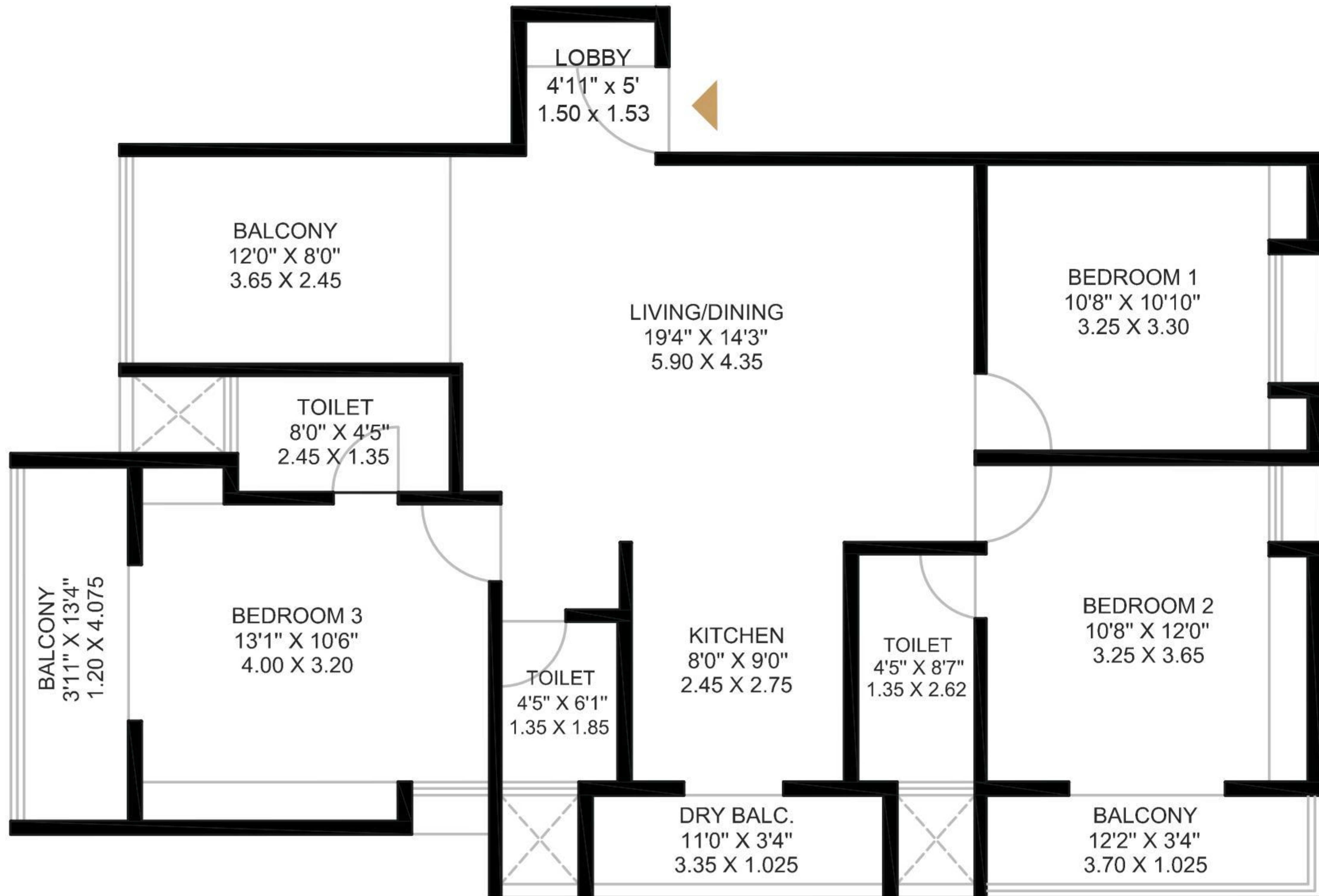




# GOKHALE ANANTAM

3 BHK Apartments

101, 201, 301, 601



ROAD



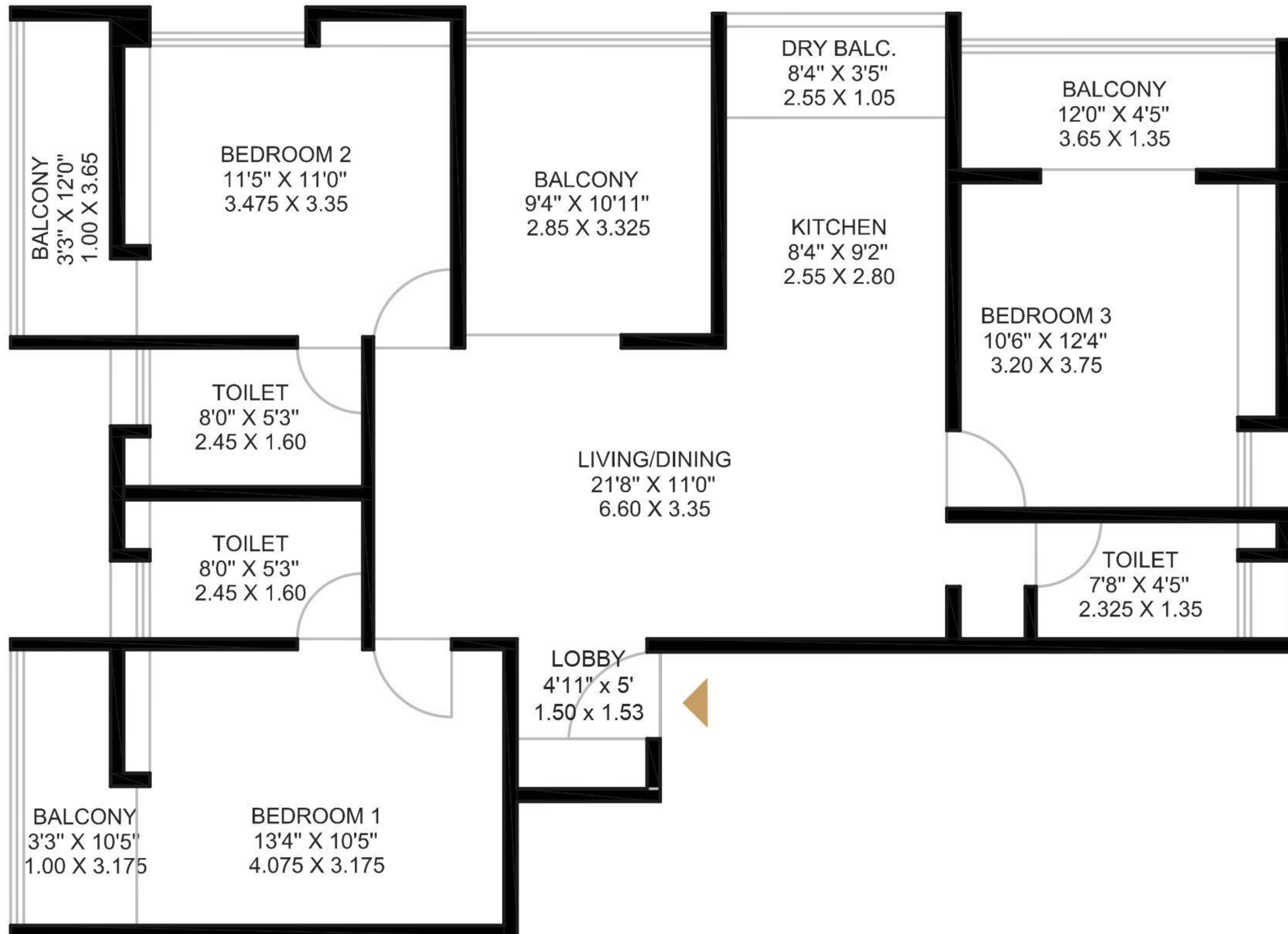
NO.	TYPE	CARPET	OPEN BALC./ SITOUT	
301 601	3 BHK	916	225	SQ. FT.
		85.14	20.87	SQ. M.



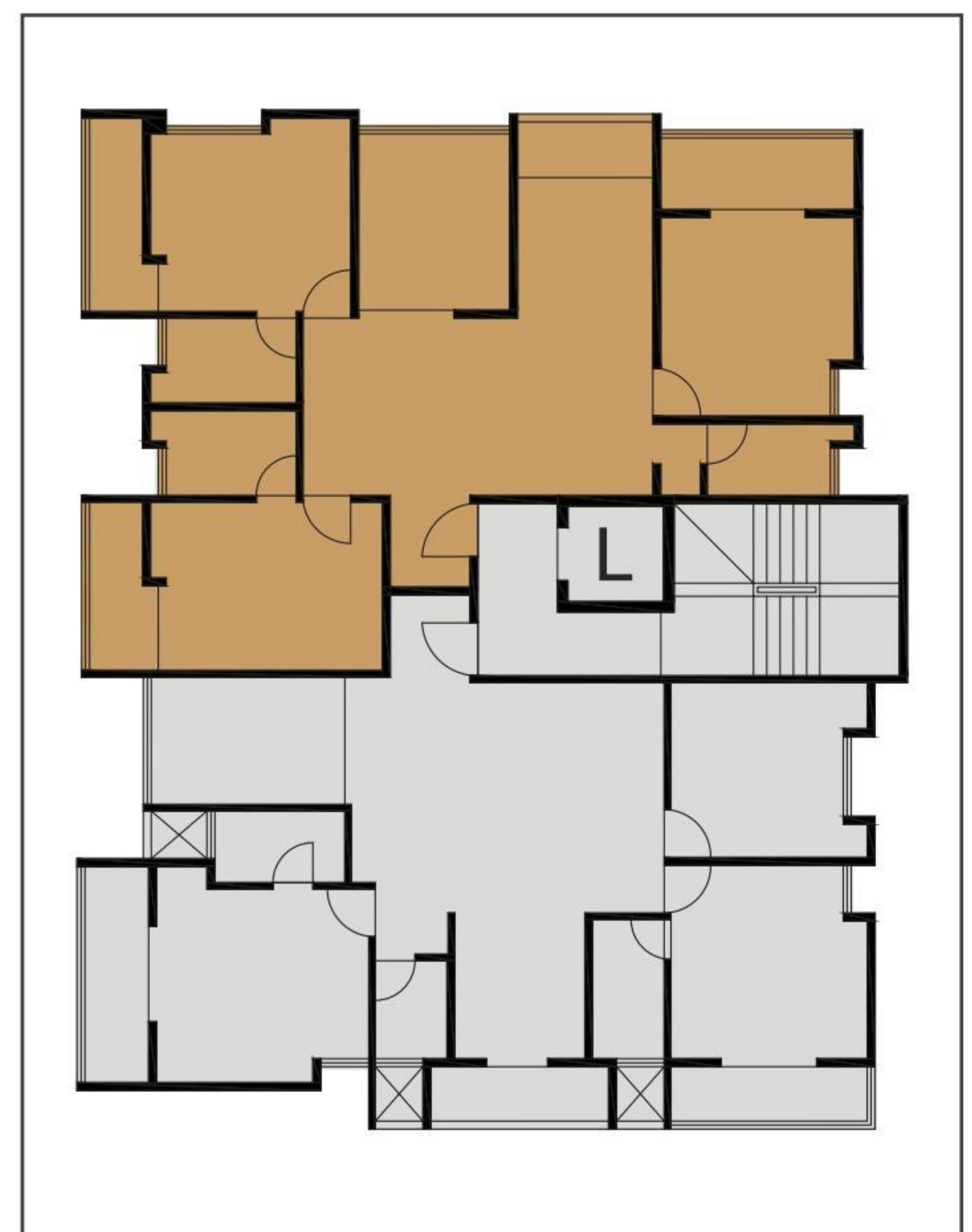
# GOKHALE ANANTAM

3 BHK Apartments

102, 202, 602



ROAD



NO.	TYPE	CARPET	OPEN BALC./ SITOUT	
602	3 BHK	910	265	SQ. FT.
		84.53	24.65	SQ. M.