



f. **Première**
BY H&S

Signature
Residences For
The Distinguished



ABOUT FASHION TV

Fashion TV has been a celebratory name since 1997 with its top-notch fashion and lifestyle broadcasting. It has established an eternal and exclusive edge with original, unbiased and informative programming of fashion, style, beauty and trends.



COSMOPOLITAN
PLATFORM

GLOBAL
CONTENT

MILLIONS
OF VIEWERS

INFLUENTIAL
PARTNERSHIPS

EXQUISITE
QUALITY

STYLING THE SKYLINE WITH FASHION RESIDENCES

AT YAMUNA EXPRESSWAY

Bringing Fashion to everyday life
with BRANDED RESIDENCES

DESIGNING an Ultimate Choice
of PANACHE for Celebrities

Presenting an Exclusive Edition
of STYLISH ABODES



“ My vision is to make our life fashionable, on every corner and minute of our life. fashion should be the guiding light. We look forward to moving into the f Premiere residences ”

MICHEL ADAM - FOUNDER F TV



ARTISTIC IMAGE

Disclaimer: The amenities, specifications, facilities, surrounding infrastructure, stock images and features shown and/or mentioned and the image renders used herein are purely indicative and promotional and may differ from the actuals. Except as expressly stated, the Company/Firm, its promoters, partners/directors, employees/ associates/ nominees and agents make no express or implied warranties about the accuracy of the facilities mentioned herein. It is clarified that all the facilities and amenities in the project are not currently functional/ operational and are subject to completion of the project.

KEY GROWTH DRIVERS OF THE YAMUNA EXPRESSWAY



JEWAR INTERNATIONAL AIRPORT

The upcoming Jewar International Airport themed and designed like the Zurich International Airport, the second of its kind in Delhi NCR, will lead to the eventual increase in population density in the areas.



FILM CITY

Top Domestic & International Companies are keen on developing Film City along Yamuna Expressway in Greater Noida making way for handsome property returns.



HIGHWAY CONNECTIVITY

The extremely beneficial interlinkage of the Yamuna Expressway to two main cities of India, namely Mumbai and Delhi will bring great amount of business and location advantages



THE MOTOR RACING TRACK

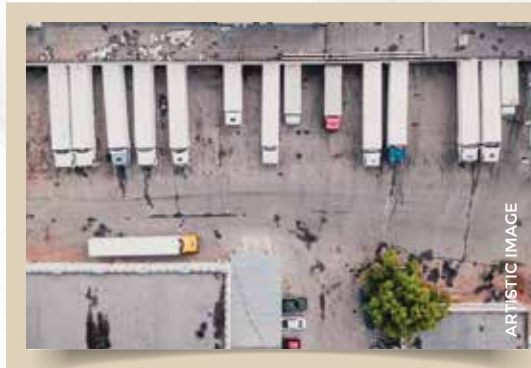
The only Motor Racing Track in India is situated along the Yamuna Expressway bringing national and international investment prospects

KEY GROWTH DRIVERS OF THE YAMUNA EXPRESSWAY



SPORTS FACILITIES

Homing a Cricket Stadium & Different Golf Courses to welcome Prominent Players and a Colossal Audience.



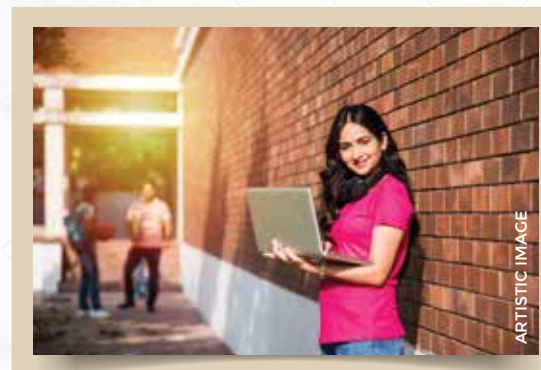
LOGISTIC & MANUFACTURING HUB

India's Biggest Logistics and Manufacturing Hub is coming up in Close Proximity to upcoming Jewar International Airport.



IT PARKS

The Big IT Giants of Industry are going to generate large-scale employment & relocating opportunities.



EDUCATION

Aiming at a World-Class Education Access with Renowned Universities and Upcoming Prominent Institutions.



NIGHT SAFARI

The Prestigious project for setting up India's First Night Safari will create a new Recreational opportunity.

LIFESTYLE FOR THE FAST & FABULOUS



ARTISTIC IMAGE

Disclaimer: All the images, walkthroughs, visuals and render images used in the brochure are only illustrative in nature and are intended to convey the concept and vision for the homes and in no manner depict the actual images. All the images, walkthroughs, visuals and render images used are for advertisement and promotional purposes only and the original and actual images of the finished unit(s) and specification are subject to variation. The dimensions depicted in the brochure do not form part of any contract or warranty.



ROUTING A RACE TO REGAL RESIDENCES

Settle aside the most superiorly developed and the one and only motor Racing track in india to ace the race of abundant possibilites of national and international prominence Accelerate your Lifestyle with a progressive Abode on this Motor Racing Track in Greater Noida, Uttar Pradesh.



Disclaimer: All the images, walkthroughs, visuals and render images used in the brochure are only illustrative in nature and are intended to convey the concept and vision for the homes and in no manner depict the actual images. All the images, walkthroughs, visuals and render images used are for advertisement and promotional purposes only and the original and actual images of the finished unit(s) and specification are subject to variation. The dimensions depicted in the brochure do not form part of any contract or warranty.



ACTUAL IMAGE

Disclaimer: All the images, walkthroughs, visuals and render images used in the brochure are only illustrative in nature and are intended to convey the concept and vision for the homes and in no manner depict the actual images. All the images, walkthroughs, visuals and render images used are for advertisement and promotional purposes only and the original and actual images of the finished unit(s) and specification are subject to variation. The dimensions depicted in the brochure do not form part of any contract or warranty.

MADE WITH MAJESTIC MAGNIFICENCE



ARTISTIC IMAGE

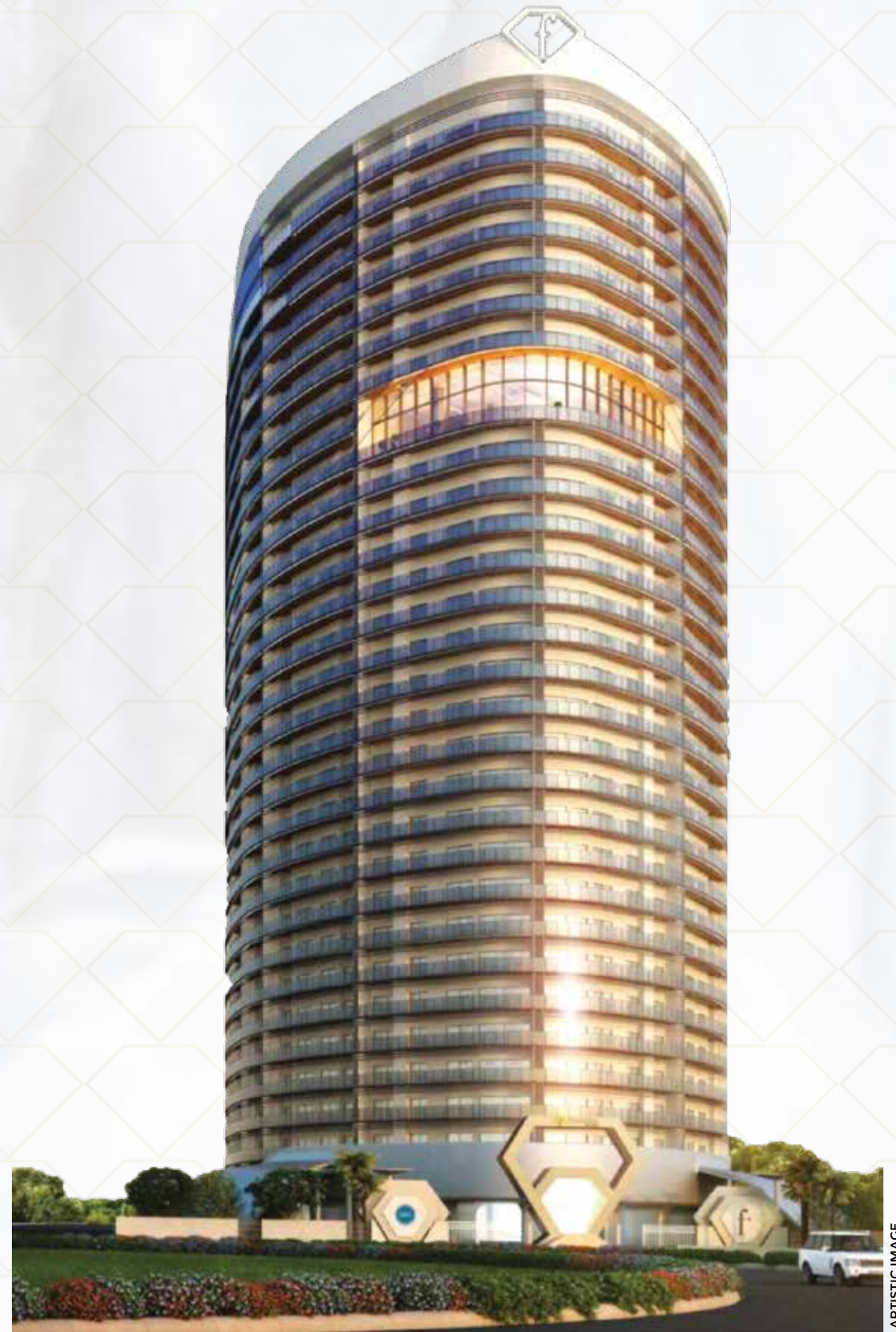
Disclaimer: All the images, walkthroughs, visuals and render images used in the brochure are only illustrative in nature and are intended to convey the concept and vision for the homes and in no manner depict the actual images. All the images, walkthroughs, visuals and render images used are for advertisement and promotional purposes only and the original and actual images of the finished unit(s) and specification are subject to variation. The dimensions depicted in the brochure do not form part of any contract or warranty.



ARTISTIC IMAGE

Disclaimer: All the images, walkthroughs, visuals and render images used in the brochure are only illustrative in nature and are intended to convey the concept and vision for the homes and in no manner depict the actual images. All the images, walkthroughs, visuals and render images used are for advertisement and promotional purposes only and the original and actual images of the finished unit(s) and specification are subject to variation. The dimensions depicted in the brochure do not form part of any contract or warranty.

STYLING THE ART OF EXCLUSIVITY



ARTISTIC IMAGE

Disclaimer: All the images, walkthroughs, visuals and render images used in the brochure are only illustrative in nature and are intended to convey the concept and vision for the homes and in no manner depict the actual images. All the images, walkthroughs, visuals and render images used are for advertisement and promotional purposes only and the original and actual images of the finished unit(s) and specification are subject to variation. The dimensions depicted in the brochure do not form part of any contract or warranty.



SKY LOUNGE

Artistic Image



AMPHITHEATRE

Artistic Image



WELCOME LOBBY

Artistic Image

HAUTE COUTURE HOME

Strategically located just off the state-of-the-art Yamuna Expressway overlooking the Motor Racing track

An exclusive residents 'Sky Lounge' set on level 22-23 with magnificent views

Club Premiere with a grand pool, gymnasium, steam room and a multipurpose hall

Amphitheatre, badminton / basketball court, tennis court for outdoor recreational activities

Choice of 2 & 3 BHK Signature Style Residences

Disclaimer: The amenities, specifications, facilities, surrounding infrastructure, stock images and features shown and/or mentioned and the image renders used herein are purely indicative and promotional and may differ from the actuals. Except as expressly stated, the Company/Firm, its promoters, partners/directors, employees/ associates/ nominees and agents make no express or implied warranties about the accuracy of the facilities mentioned herein. It is clarified that all the facilities and amenities in the project are not currently functional/ operational and are subject to completion of the project.

SITE PLAN



1. Guard Room & Main entry

5. Kids Play area

9. Basketball/Badminton Court

13. Kids Pool

17. Seating Under Canopy

2. Tower Entrance Plaza

6. Sit Out Space

10. Tennis Court

14. Main Pool

3. Towers

7. Pavilion

11. Lawns

15. Pool Deck

4. Jogging path

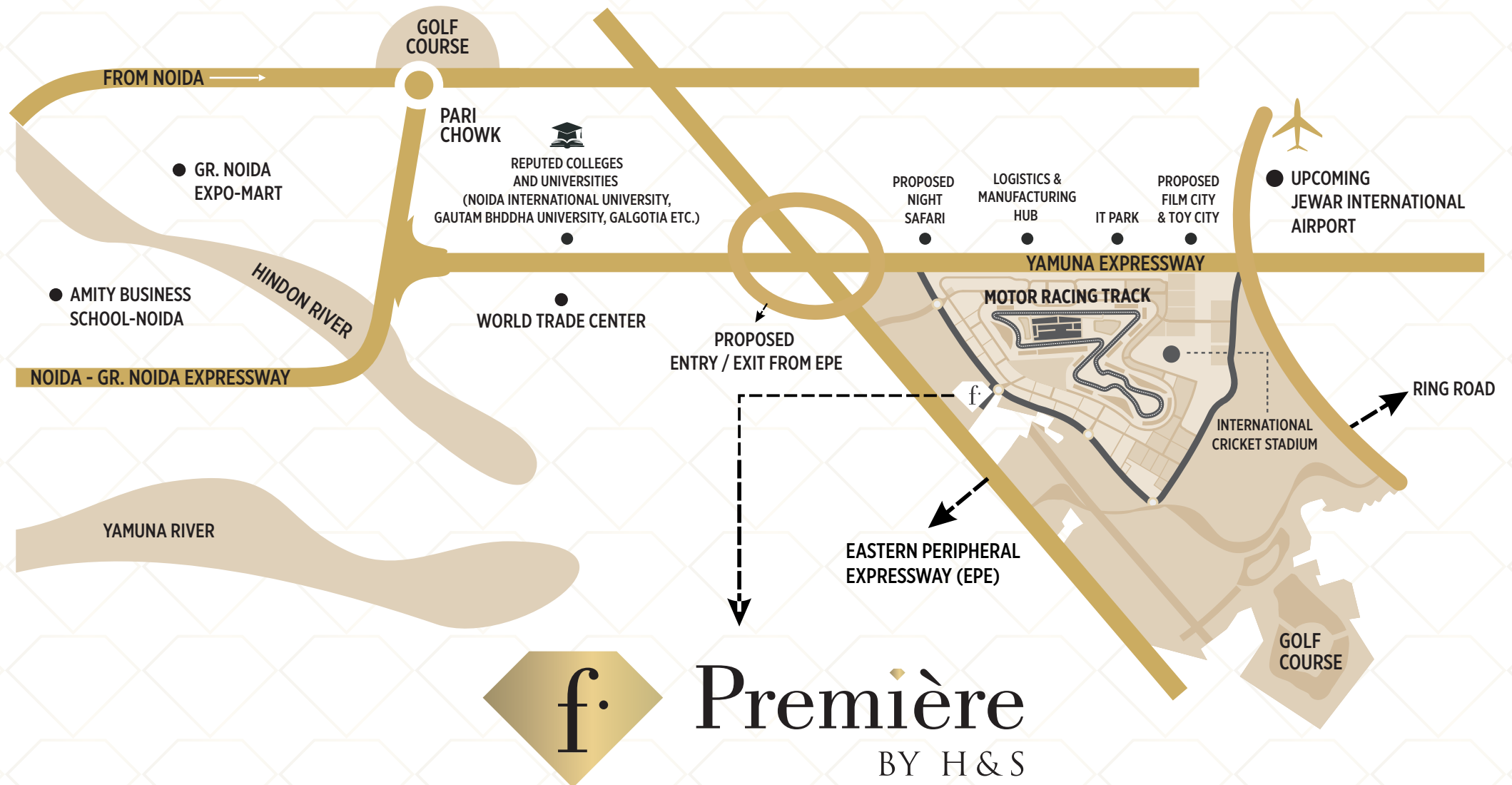
8. Amphitheatre

12. Greens

16. Juice Bar

Disclaimer: The amenities, specifications, facilities, surrounding infrastructure, stock images and features shown and/or mentioned and the image renders used herein are purely indicative and promotional and may differ from the actuals. Except as expressly stated, the Company/Firm, its promoters, partners/directors, employees/ associates/ nominees and agents make no express or implied warranties about the accuracy of the facilities mentioned herein. It is clarified that all the facilities and amenities in the project are not currently functional/ operational and are subject to completion of the project.

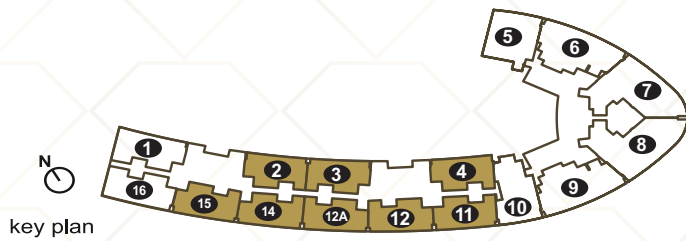
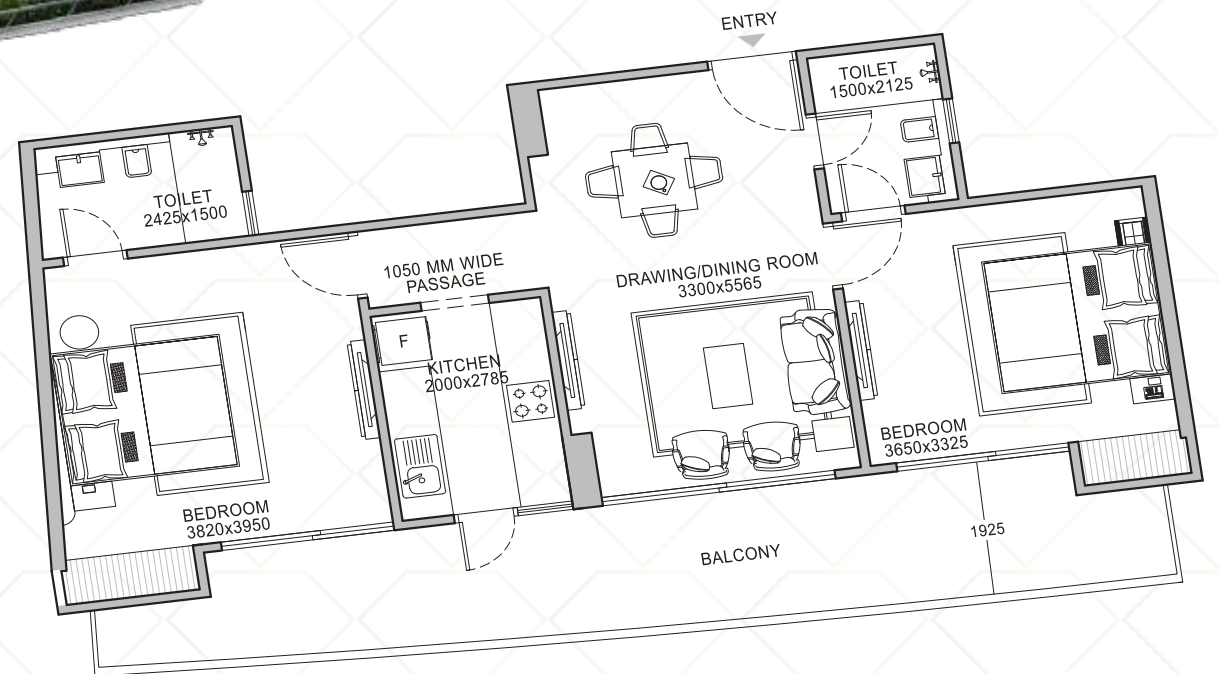
LOCATION MAP



MAP NOT TO SCALE

Disclaimer: The amenities, specifications, facilities, surrounding infrastructure, stock images and features shown and/or mentioned and the image renders used herein are purely indicative and promotional and may differ from the actuals. Except as expressly stated, the Company/Firm, its promoters, partners/directors, employees/ associates/ nominees and agents make no express or implied warranties about the accuracy of the facilities mentioned herein. It is clarified that all the facilities and amenities in the project are not currently functional/ operational and are subject to completion of the project. Whilst every attempt has been made to ensure the accuracy of the floor plan contained here, measurements of doors, windows, rooms and any other item are approximate, the same as contained in the brochure are only tentative and indicative and are subject to variation. The Floor plans are intended to give only a general indication of the proposed layout and subject to change without prior notice. All images, floor plans and dimensions do not form part of and are not intended to form part any contract.

FLOOR PLAN



UNIT TYPE - 2 BHK

1256.68 SQ. FT. - 1291.07 SQ. FT.
(116.74 sq. mt. - 119.94 sq. mt.)

UNIT COVERED AREA:
970.70 sq. ft. - 977.91 sq. ft.
90.18 sq. mt. - 90.85 sq. mt.

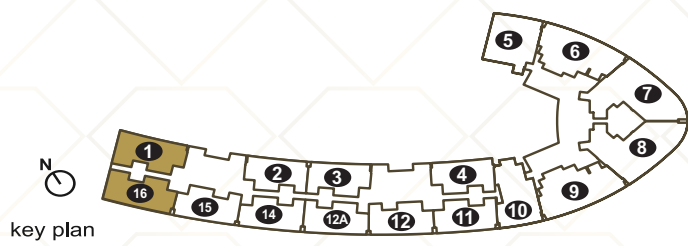
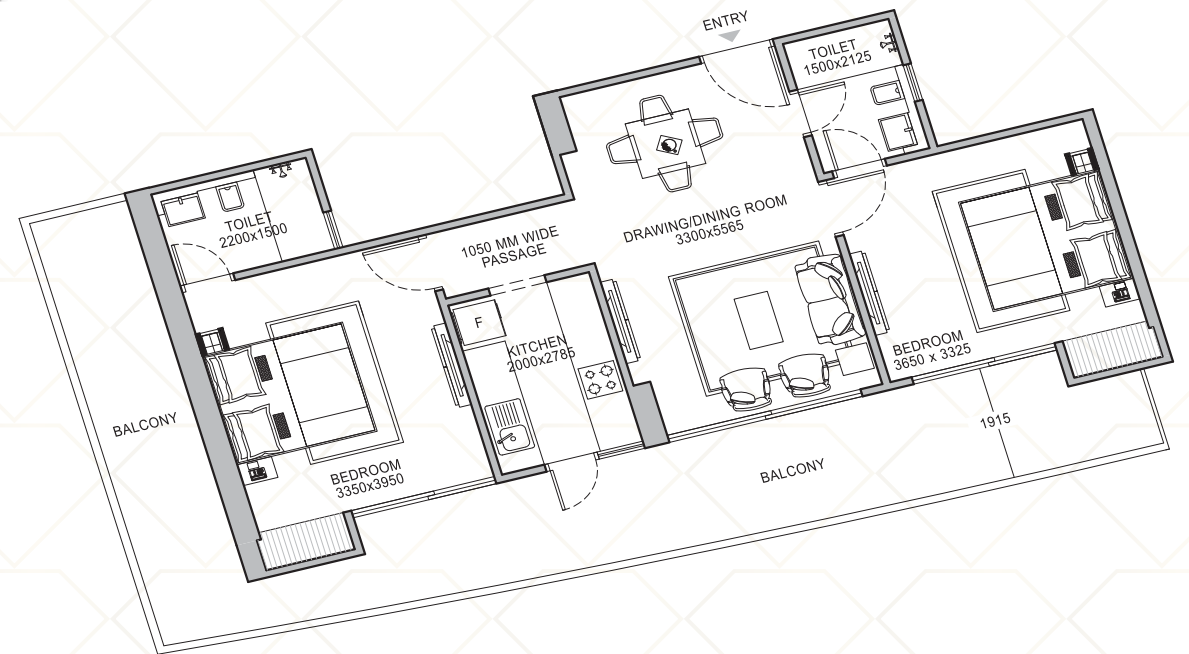
UNIT CARPET AREA:
666.83 sq. ft. - 685.88 sq. ft.
61.95 sq. mt. - 63.17 sq. mt.

BALCONY AREA:
227.77 sq. ft. - 223.89 sq. ft.
21.16 sq. mt. - 20.79 sq. mt.

DESCRIPTION	SIZES IN FEET	SIZES IN MILLIMETERS	DESCRIPTION	SIZES IN FEET	SIZES IN MILLIMETERS
DRAWING/ DINING ROOM	10'-10" X 18'-3"	3300 X 5565	BEDROOM	12'-0" X 10'-11"	3650 X 3325
KITCHEN	6'-7" X 9'-1"	2000 X 2785	TOILET	4'-11" X 7'-0"	1500 X 2125
BEDROOM	12'-6" X 13'-0"	3820 X 3950	BALCONY : MAX. DEPTH	6'-4"	1925
TOILET	7'-11" X 4'-11"	2425 X 1500			

Disclaimer: Whilst every attempt has been made to ensure the accuracy of the floor plan contained here, measurements of doors, windows, rooms and any other item are approximate, the same as contained in the brochure are only tentative and indicative and are subject to variation. The Floor plans are intended to give only a general indication of the proposed layout and subject to change without prior notice. All images, floor plans and dimensions do not form part of and are not intended to form part any contract. The area of the unit mentioned against each category is tentative and indicative and the floor sizes/areas in each category may vary depending upon the location and layout of the particular unit. The total price of the unit shall be quantified based on the actual measurements once the unit has been completed in its entirety, and if any additional area is measured, the demand for the same shall be raised in the final demand at the time of offer of possession. The buyer agrees to a variation of 20% in the area of the flat and the terms and conditions shall be read for the sale of the property with variation to the extent of 20%.

FLOOR PLAN



UNIT TYPE - 2 BHK + TERRACE

1435.03 SQ. FT. - 1468 SQ. FT.
(133.31 sq. mt. - 136.38 sq. mt.)

DESCRIPTION	SIZES IN FEET	SIZES IN MILLIMETERS	DESCRIPTION	SIZES IN FEET	SIZES IN MILLIMETERS
DRAWING/ DINING ROOM	10'-10" X 18'-4"	3300 X 5565	BEDROOM	12'-0" X 10'-11"	3650 X 3325
KITCHEN	6'-7" X 9'-1"	2000 X 2785	TOILET	4'-11" X 7'-0"	1500 X 2125
BEDROOM	11'-0" X 13'-0"	3350 X 3950	BALCONY : MAX. DEPTH	6'-3"	1915
TOILET	7'-3" X 4'-11"	2200 X 1500			

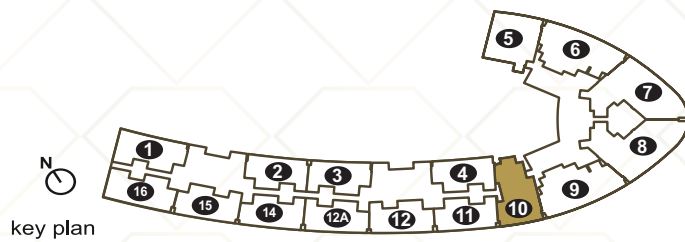
UNIT COVERED AREA:
1086.95 sq. ft. - 1111.92 sq. ft.
100.98 sq. mt. - 103.29 sq. mt.

UNIT CARPET AREA:
666.98 sq. ft. - 667.05 sq. ft.
61.96 sq. mt. - 61.97 sq. mt.

BALCONY AREA:
367.48 sq. ft. - 336.70 sq. ft.
34.53 sq. mt. - 31.28 sq. mt.

Disclaimer: Whilst every attempt has been made to ensure the accuracy of the floor plan contained here, measurements of doors, windows, rooms and any other item are approximate, the same as contained in the brochure are only tentative and indicative and are subject to variation. The Floor plans are intended to give only a general indication of the proposed layout and subject to change without prior notice. All images, floor plans and dimensions do not form part of and are not intended to form part any contract. The area of the unit mentioned against each category is tentative and indicative and the floor sizes/areas in each category may vary depending upon the location and layout of the particular unit. The total price of the unit shall be quantified based on the actual measurements once the unit has been completed in its entirety, and if any additional area is measured, the demand for the same shall be raised in the final demand at the time of offer of possession. The buyer agrees to a variation of 20% in the area of the flat and the terms and conditions shall be read for the sale of the property with variation to the extent of 20%.

FLOOR PLAN



UNIT TYPE - 2 BHK LX

1656.72 SQ. FT.
(153.91 sq. mt.)

UNIT COVERED AREA:
1254.87 sq. ft.
116.58 sq. mt.

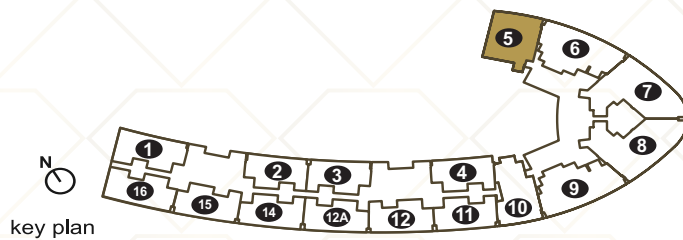
UNIT CARPET AREA:
883.94 sq. ft.
82.12 sq. mt.

BALCONY AREA:
295.9 sq. ft.
27.48 sq. mt.

DESCRIPTION	SIZES IN FEET	SIZES IN MILLIMETERS	DESCRIPTION	SIZES IN FEET	SIZES IN MILLIMETERS
DRAWING/ DINING ROOM	11'-2" X 22'-10"	3400 X 6895	STUDY ROOM	11'-5" X 9'-0"	3485 X 2740
KITCHEN	7'-5" X 9'-0"	2250 X 2750	MASTER BEDROOM	11'-7" X 12'-7"	3535 X 3830
BEDROOM	11'-9" X 12'-0"	3575 X 3650	TOILET	4'-11" X 7'-5"	1500 X 2250
TOILET	7'-0" X 4'-11"	2135 X 1500	BALCONY : MAX. DEPTH	9'-7"	2920

Disclaimer: Whilst every attempt has been made to ensure the accuracy of the floor plan contained here, measurements of doors, windows, rooms and any other item are approximate, the same as contained in the brochure are only tentative and indicative and are subject to variation. The Floor plans are intended to give only a general indication of the proposed layout and subject to change without prior notice. All images, floor plans and dimensions do not form part of and are not intended to form part any contract. The area of the unit mentioned against each category is tentative and indicative and the floor sizes/areas in each category may vary depending upon the location and layout of the particular unit. The total price of the unit shall be quantified based on the actual measurements once the unit has been completed in its entirety, and if any additional area is measured, the demand for the same shall be raised in the final demand at the time of offer of possession. The buyer agrees to a variation of 20% in the area of the flat and the terms and conditions shall be read for the sale of the property with variation to the extent of 20%.

FLOOR PLAN



UNIT TYPE - 2 BHK LX

1685.71 SQ. FT.
(156.6 sq. mt.)

UNIT COVERED AREA:
1276.83 sq. ft.
118.62 sq. mt.

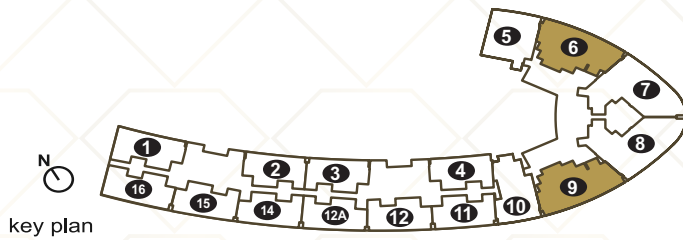
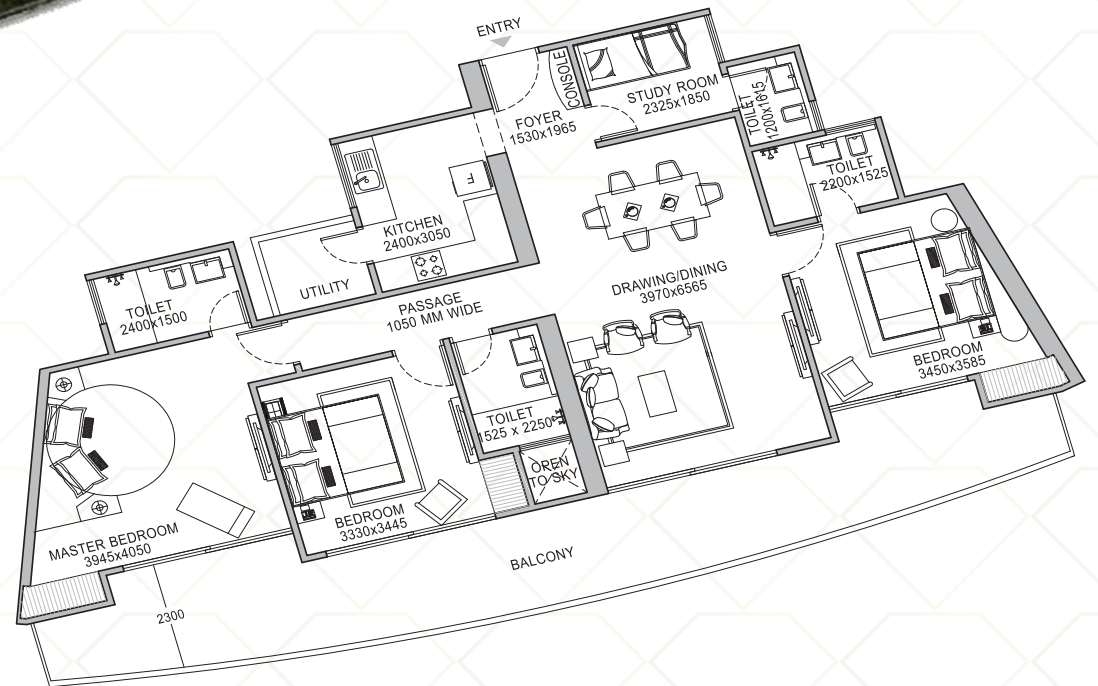
UNIT CARPET AREA:
700.2 sq. ft.
65.05 sq. mt.

BALCONY AREA:
484.49 sq. ft.
45.01 sq. mt.

DESCRIPTION	SIZES IN FEET	SIZES IN MILLIMETERS	DESCRIPTION	SIZES IN FEET	SIZES IN MILLIMETERS
FOYER	4'-0" X 5'-8"	1220 X 1725	MASTER BEDROOM	10'-10" X 12'-0"	3320 X 3655
DRAWING/ DINING ROOM	11'-2" X 17'-10"	3400 X 5415	DRESS	6'-2" X 4'-11"	1885 X 1500
KITCHEN	6'-9" X 9'-0"	2065 X 2750	TOILET	4'-11" X 7'-5"	1500 X 2250
BEDROOM	11'-5" X 12'-4"	3485 X 3765	BALCONY : MAX. DEPTH	10'-3"	3135
TOILET	4'-11" X 7'-5"	1500 X 2250			

Disclaimer: Whilst every attempt has been made to ensure the accuracy of the floor plan contained here, measurements of doors, windows, rooms and any other item are approximate, the same as contained in the brochure are only tentative and indicative and are subject to variation. The Floor plans are intended to give only a general indication of the proposed layout and subject to change without prior notice. All images, floor plans and dimensions do not form part of and are not intended to form part any contract. The area of the unit mentioned against each category is tentative and indicative and the floor sizes/areas in each category may vary depending upon the location and layout of the particular unit. The total price of the unit shall be quantified based on the actual measurements once the unit has been completed in its entirety, and if any additional area is measured, the demand for the same shall be raised in the final demand at the time of offer of possession. The buyer agrees to a variation of 20% in the area of the flat and the terms and conditions shall be read for the sale of the property with variation to the extent of 20%.

FLOOR PLAN



UNIT TYPE - 3 BHK

2219.05 SQ. FT. - 2224.02 SQ. FT.
(206.15 sq. mt. - 206.61 sq. mt.)

UNIT COVERED AREA:
1680.8 sq. ft. - 1684.57 sq. ft.
156.15 sq. mt. - 156.50 sq. mt.

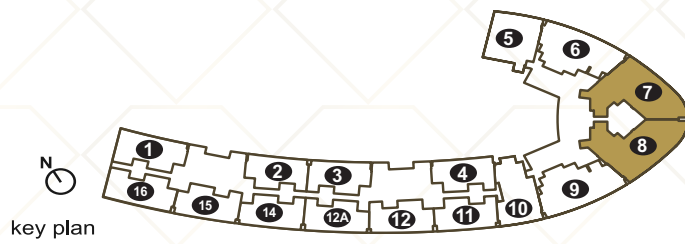
UNIT CARPET AREA:
1164.23 sq. ft. - 1164.99 sq. ft.
108.15 sq. mt. - 108.23 sq. mt.

BALCONY AREA:
409.03 sq. ft. - 410.65 sq. ft.
37.99 sq. mt. - 38.15 sq. mt.

DESCRIPTION	SIZES IN FEET	SIZES IN MILLIMETERS	DESCRIPTION	SIZES IN FEET	SIZES IN MILLIMETERS
FOYER	5'-0" X 6'-6"	1530 X 1965	TOILET	7'-3" X 5'-0"	2200 X 1525
DRAWING/ DINING ROOM	13'-0" X 21'-8"	3970 X 6565	BEDROOM	10'-11" X 11'-4"	3330 X 3445
KITCHEN	7'-11" X 10'-0"	2400 X 3050	TOILET	5'-0" X 7'-5"	1525 X 2250
STUDY ROOM	7'-9" X 6'-1"	2325 X 1850	MASTER BEDROOM	13'-0" X 13'-3"	3945 X 4050
TOILET	3'-11" X 5'-3"	1200 X 1615	TOILET	7'-11" X 4'-11"	2400 X 1500
BEDROOM	11'-4" X 11'-9"	3450 X 3585	BALCONY : MAX. DEPTH	7'-6"	2300

Disclaimer: Whilst every attempt has been made to ensure the accuracy of the floor plan contained here, measurements of doors, windows, rooms and any other item are approximate, the same as contained in the brochure are only tentative and indicative and are subject to variation. The Floor plans are intended to give only a general indication of the proposed layout and subject to change without prior notice. All images, floor plans and dimensions do not form part of and are not intended to form part any contract. The area of the unit mentioned against each category is tentative and indicative and the floor sizes/areas in each category may vary depending upon the location and layout of the particular unit. The total price of the unit shall be quantified based on the actual measurements once the unit has been completed in its entirety, and if any additional area is measured, the demand for the same shall be raised in the final demand at the time of offer of possession. The buyer agrees to a variation of 20% in the area of the flat and the terms and conditions shall be read for the sale of the property with variation to the extent of 20%.

FLOOR PLAN



UNIT TYPE - 3 BHK LX

2594.79 SQ. FT. - 2604.17 SQ. FT.
(241.06 sq. mt. - 241.93 sq. mt.)

UNIT COVERED AREA:
1965.4 sq. ft. - 1972.5 sq. ft.
182.59 sq. mt. - 183.24 sq. mt.

UNIT CARPET AREA:
1390.39 sq. ft. - 1391.81 sq. ft.
129.17 sq. mt. - 129.3 sq. mt.

BALCONY AREA:
448.86 sq. ft. - 449.29 sq. ft.
41.70 sq. mt. - 41.74 sq. mt.

DESCRIPTION	SIZES IN FEET	SIZES IN MILLIMETERS	DESCRIPTION	SIZES IN FEET	SIZES IN MILLIMETERS
FOYER	8'-11" X 4'-11"	2730 X 1500	BEDROOM	10'-11" X 11'-10"	3330 X 3615
DRAWING/ DINING ROOM	12'-2" X 32'-0"	3700 X 9690	TOILET	7'-7" X 5'-0"	2300 X 1525
KITCHEN	7'-10" X 11'-0"	2400 X 3350	MASTER BEDROOM	12'-0" X 11'-10"	3650 X 3615
STUDY ROOM	6'-9" X 8'-2"	2050 X 2505	DRESS	7'-4" X 9'-4"	2225 X 2840
TOILET	4'-6" X 3'-11"	1350 X 1200	TOILET	7'-9" X 5'-0"	2365 X 1525
BEDROOM	10'-10" X 11'-10"	3300 X 3615	BALCONY : MAX. DEPTH	7'-9"	2355
TOILET	5'-0" X 7'-6"	1525 X 2250			

Disclaimer: Whilst every attempt has been made to ensure the accuracy of the floor plan contained here, measurements of doors, windows, rooms and any other item are approximate, the same as contained in the brochure are only tentative and indicative and are subject to variation. The Floor plans are intended to give only a general indication of the proposed layout and subject to change without prior notice. All images, floor plans and dimensions do not form part of and are not intended to form part any contract. The area of the unit mentioned against each category is tentative and indicative and the floor sizes/areas in each category may vary depending upon the location and layout of the particular unit. The total price of the unit shall be quantified based on the actual measurements once the unit has been completed in its entirety, and if any additional area is measured, the demand for the same shall be raised in the final demand at the time of offer of possession. The buyer agrees to a variation of 20% in the area of the flat and the terms and conditions shall be read for the sale of the property with variation to the extent of 20%.

CONCEPT BY
ACCLAIMED ARCHITECT

Aedas
SINGAPORE

Aedas is one of the world's leading global architectural firms based in Singapore. The group offers services in architecture, Interior design, landscaping & building consultancy for mixed-use, commercial, retail, residential, hospitality & social infrastructure, as well as master planning and urban design within Asia, the Middle East, Europe and America.



**BOULEVARD
PLAZA, DUBAI**



**U-BORA TOWER,
DUBAI**



OCEAN HEIGHTS, DUBAI
(DESIGNED BY ANDREW BROMBERG OF AEDAS)



**THR350,
Hong Kong**



**GRAMERCY,
HONG KONG**



**FORTUNE CENTRE,
XIAMEN, CHINA**



**CENTER 66, WUXI,
CHINA**



**NAPIER,
SINGAPORE**